

Figure 19.3.4-1 – Project Area Watershed – Tributary to Rock River

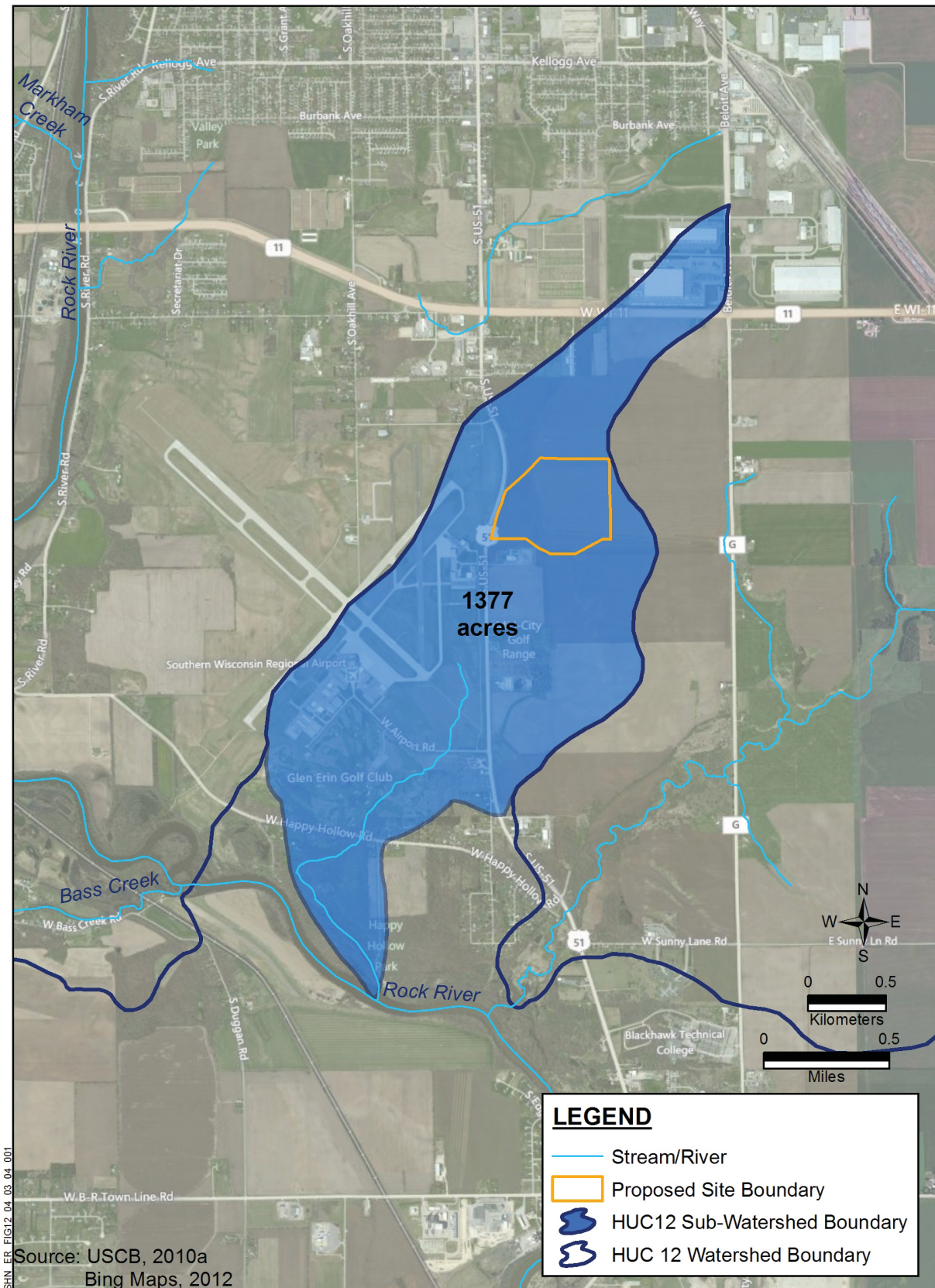
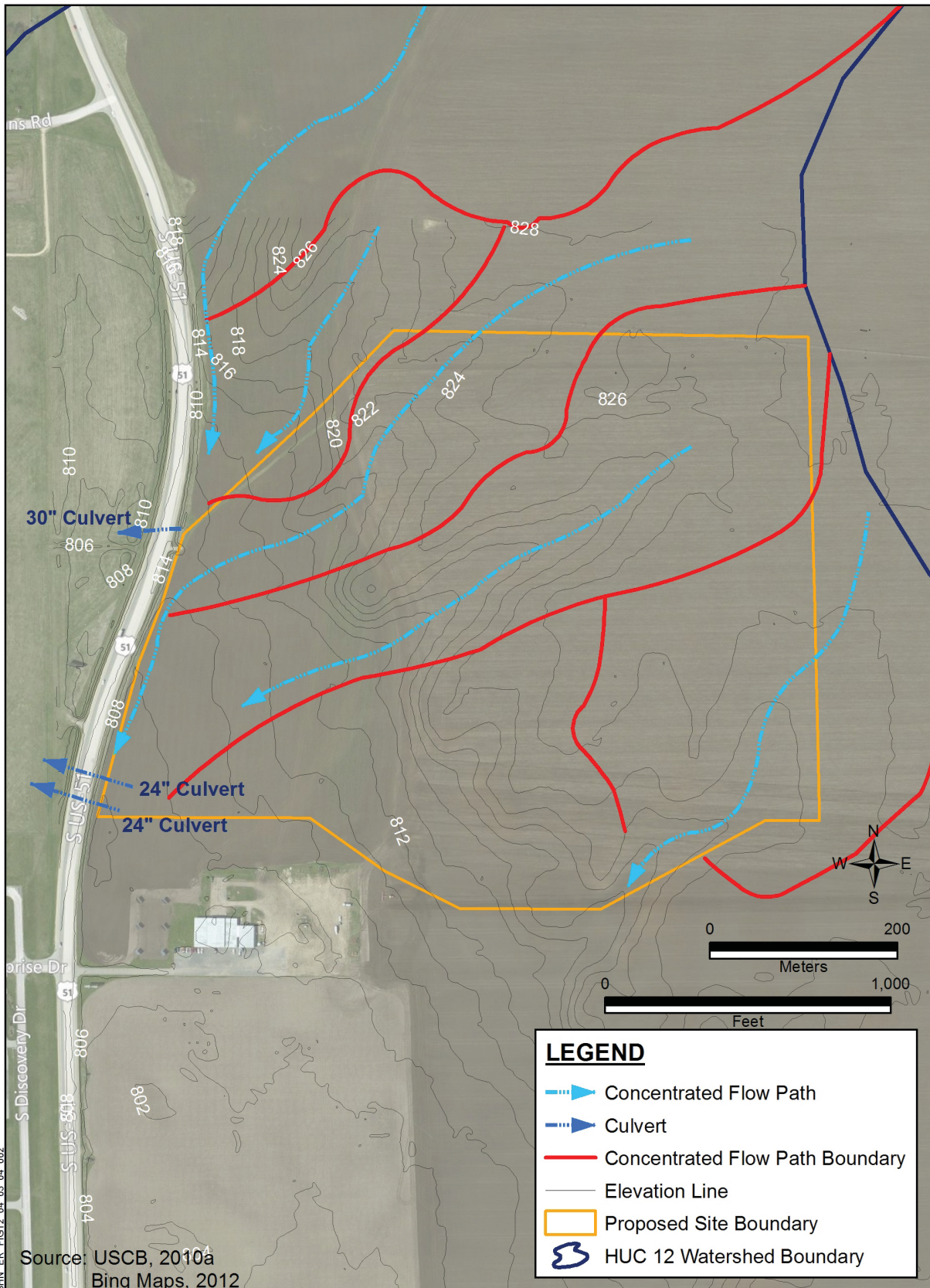
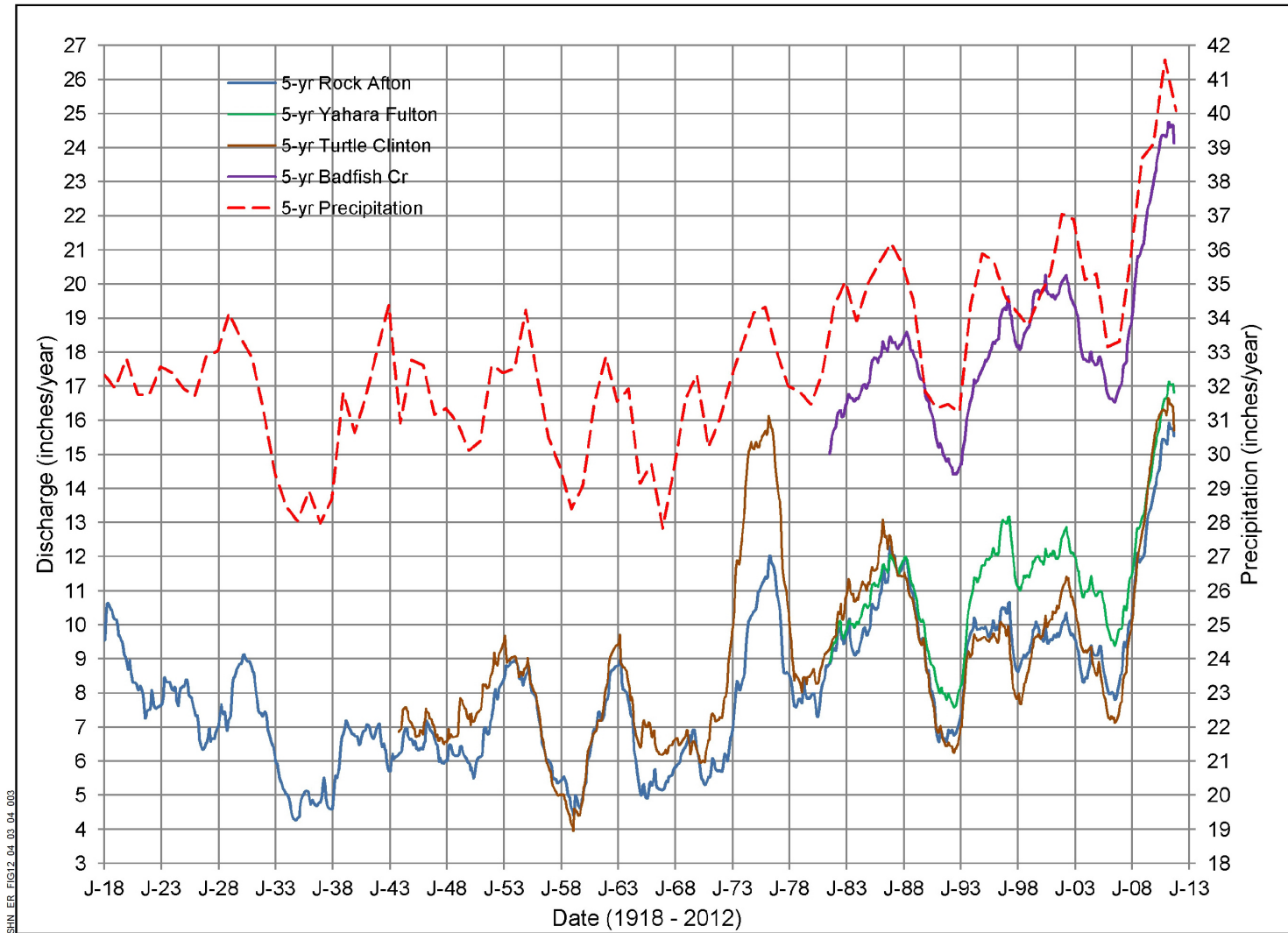


Figure 19.3.4-2 – Project Area Local Drainage



**Figure 19.3.4-3 – Long-Term Annual Streamflows and Precipitation in Rock County**



SHIN\_ER\_FIG12\_04\_03\_04\_003

Notes: "Rock Afton" = Rock River at Afton; "Yahara Fulton" = Yahara River at Fulton; "Turtle Clinton" = Turtle Creek at Clinton  
 Runoff rates presented as 12-month depths based on the running average over the previous 60 months (5 years) for these streams along with precipitation similarly expressed as 12-month depths from the 60-month (5-year) running average  
 Sources: USGS, 2012b (streamflow data); Wisconsin State Climatology Office, 2006 (precipitation data)

Figure 19.3.4-4 – Project Water Monitoring Locations

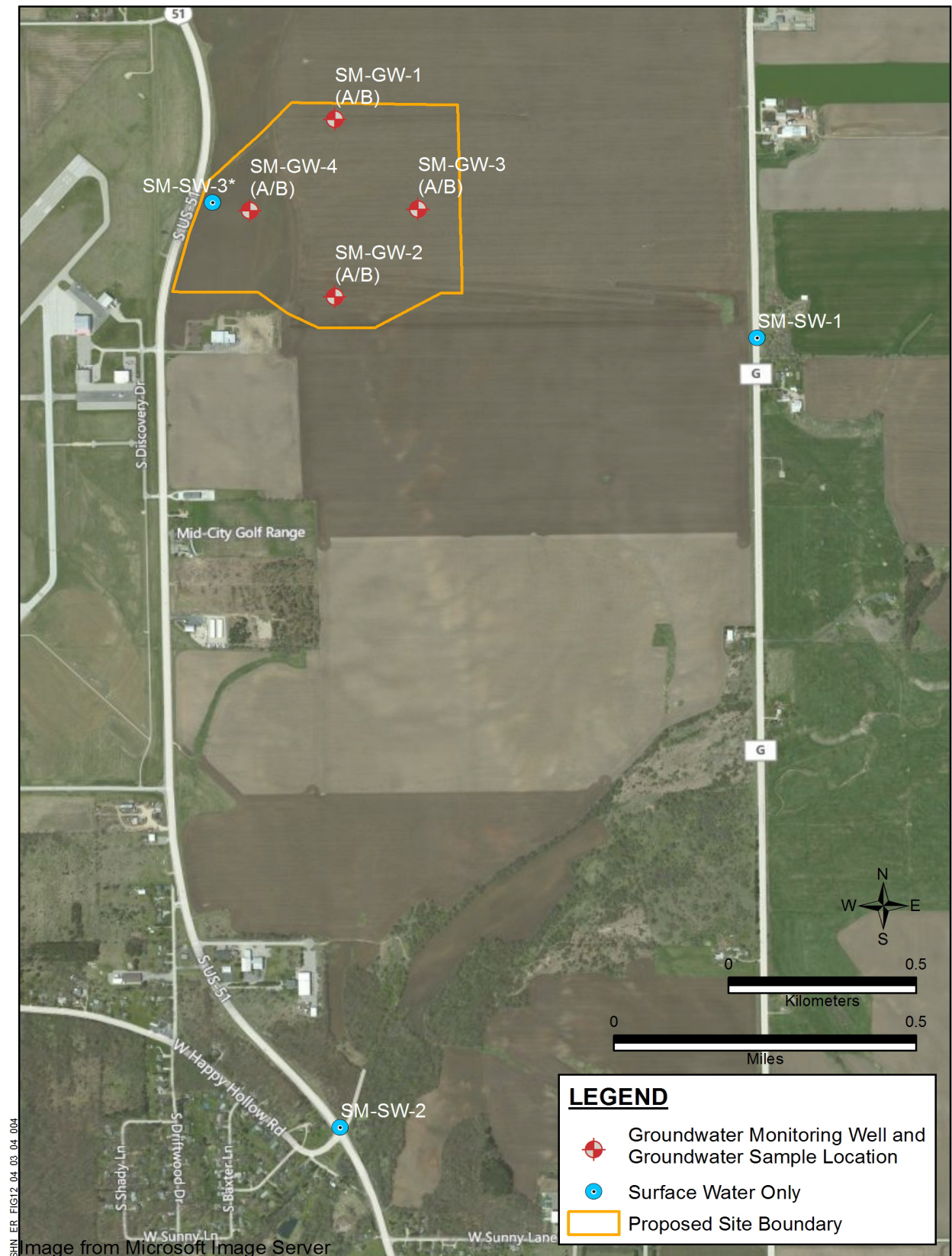


Figure 19.3.4-5 – Groundwater Elevation Isoleth, Fourth Quarter, 2011

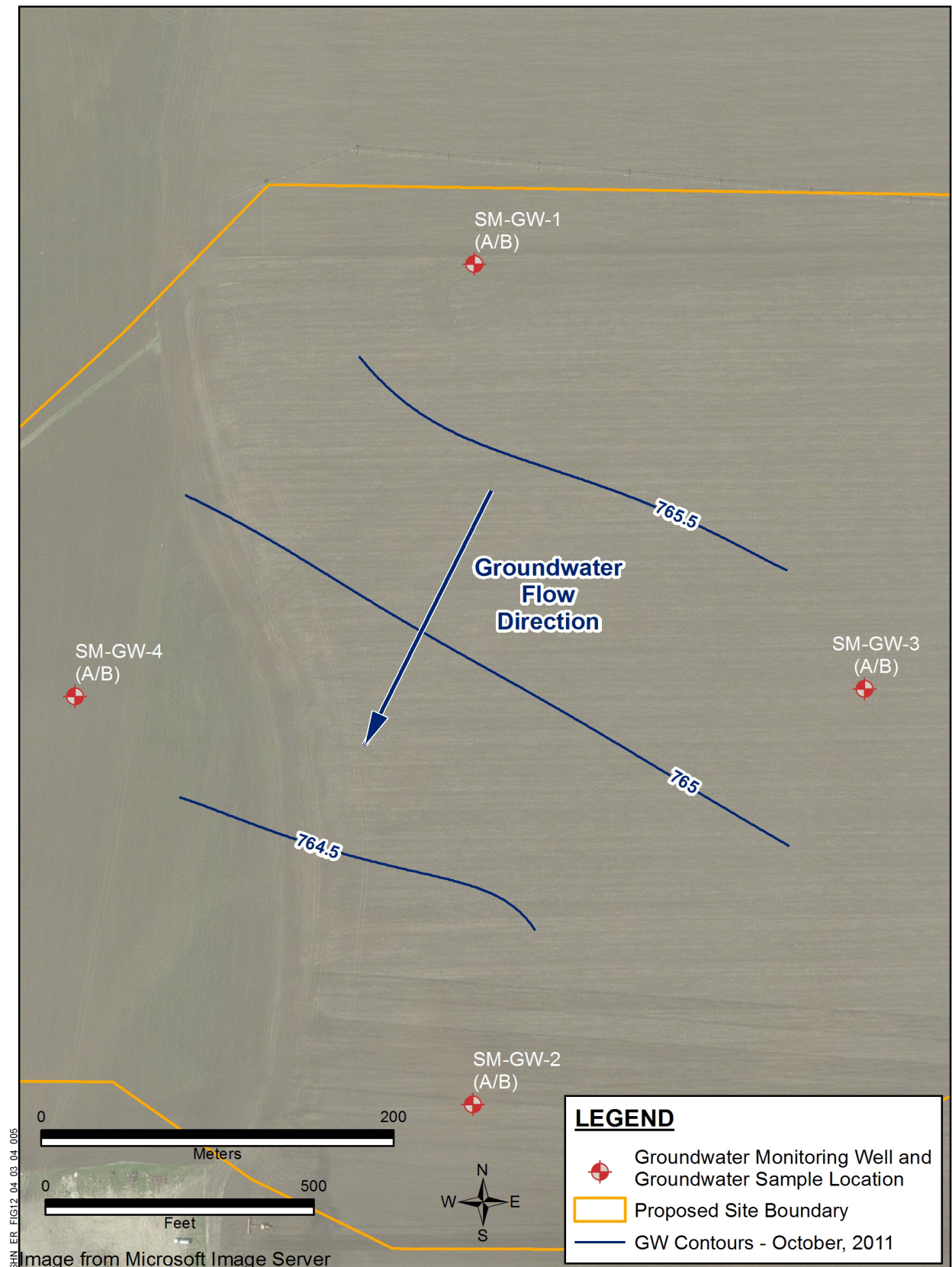


Figure 19.3.4-6 – Groundwater Elevation Isopleth, First Quarter, 2012

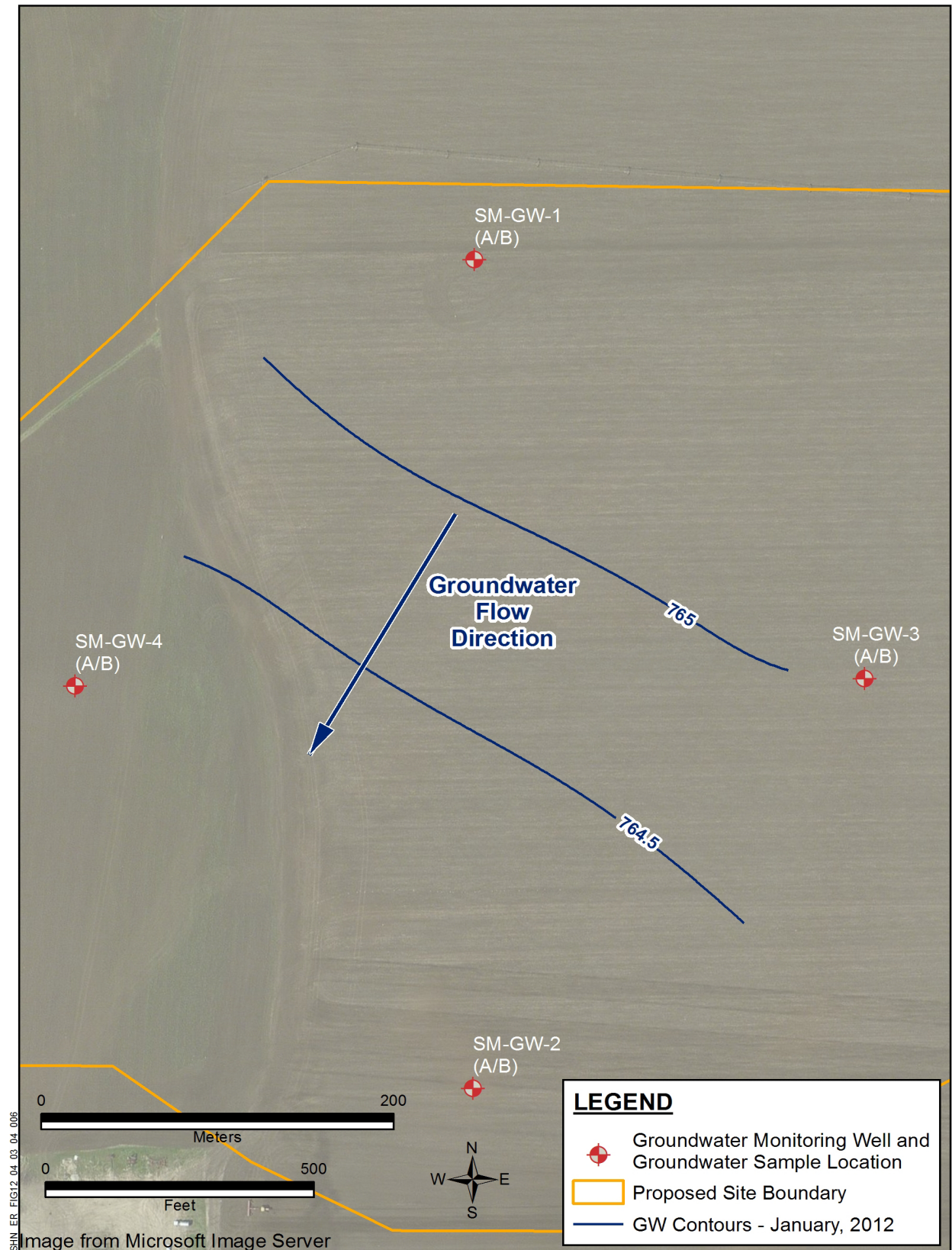


Figure 19.3.4-7 – Groundwater Elevation Isopleth, Second Quarter, 2012

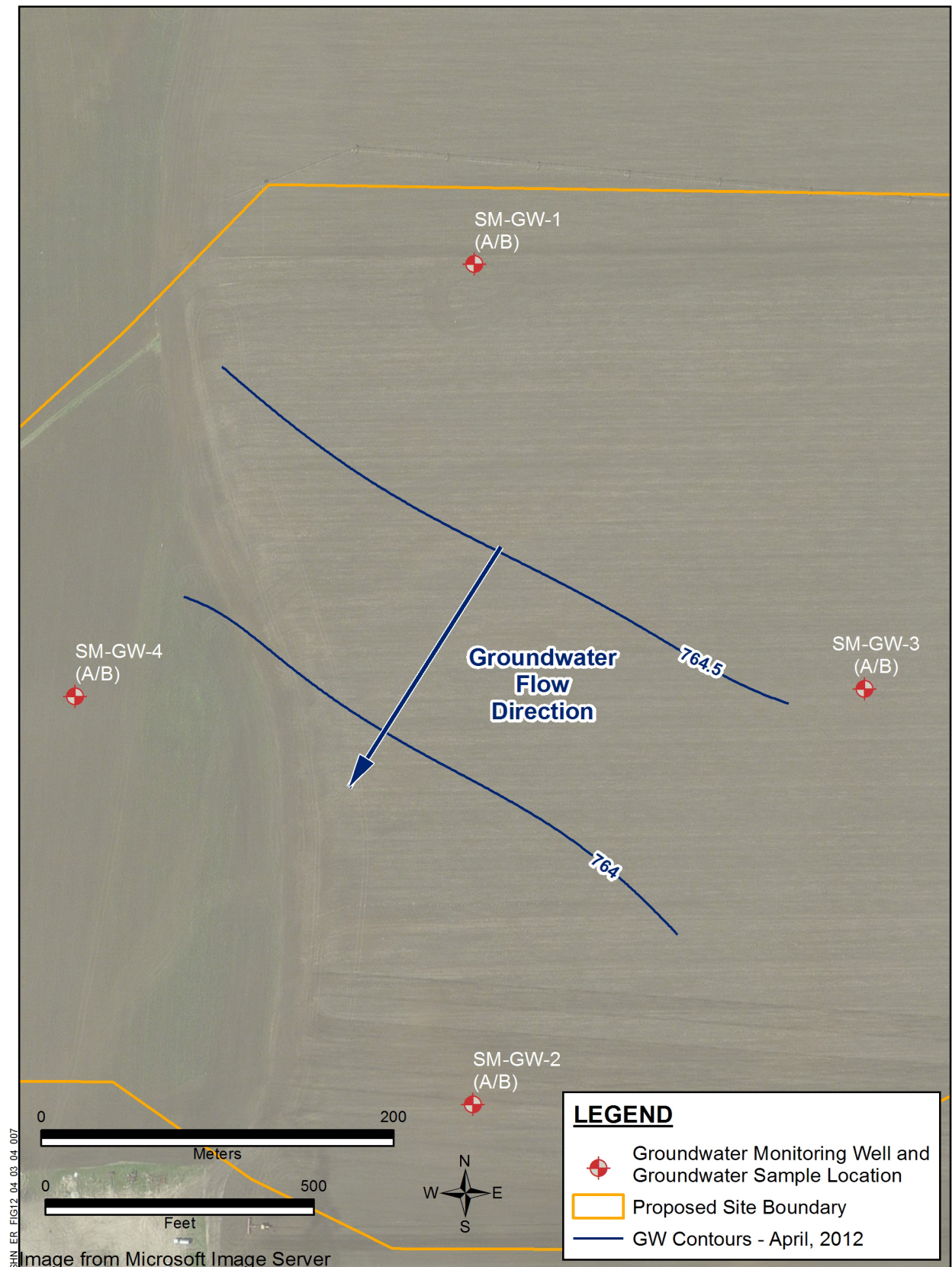


Figure 19.3.4-8 – Groundwater Elevation Isoleth, Third Quarter, 2012

