



Watts Bar Nuclear Plant Unit 2

August 27, 2013

Mike Skaggs

Senior Vice President

Nuclear Construction

Tennessee Valley Authority

Watts Bar 2 Overview

- **Westinghouse pressurized water reactor, four-loop, ice condenser**
- **Reactor power –
3411 megawatts thermal**
- **18-month fuel cycle**
- **Original license requested in
June 1976**

Watts Bar 2 Guiding Principles

- **Ensure public health and safety**
- **Protect safe operation of Unit 1**
- **Construct a safe, high quality nuclear unit**
- **Maintain fidelity of the design basis and licensing basis**

Watts Bar 2 Today

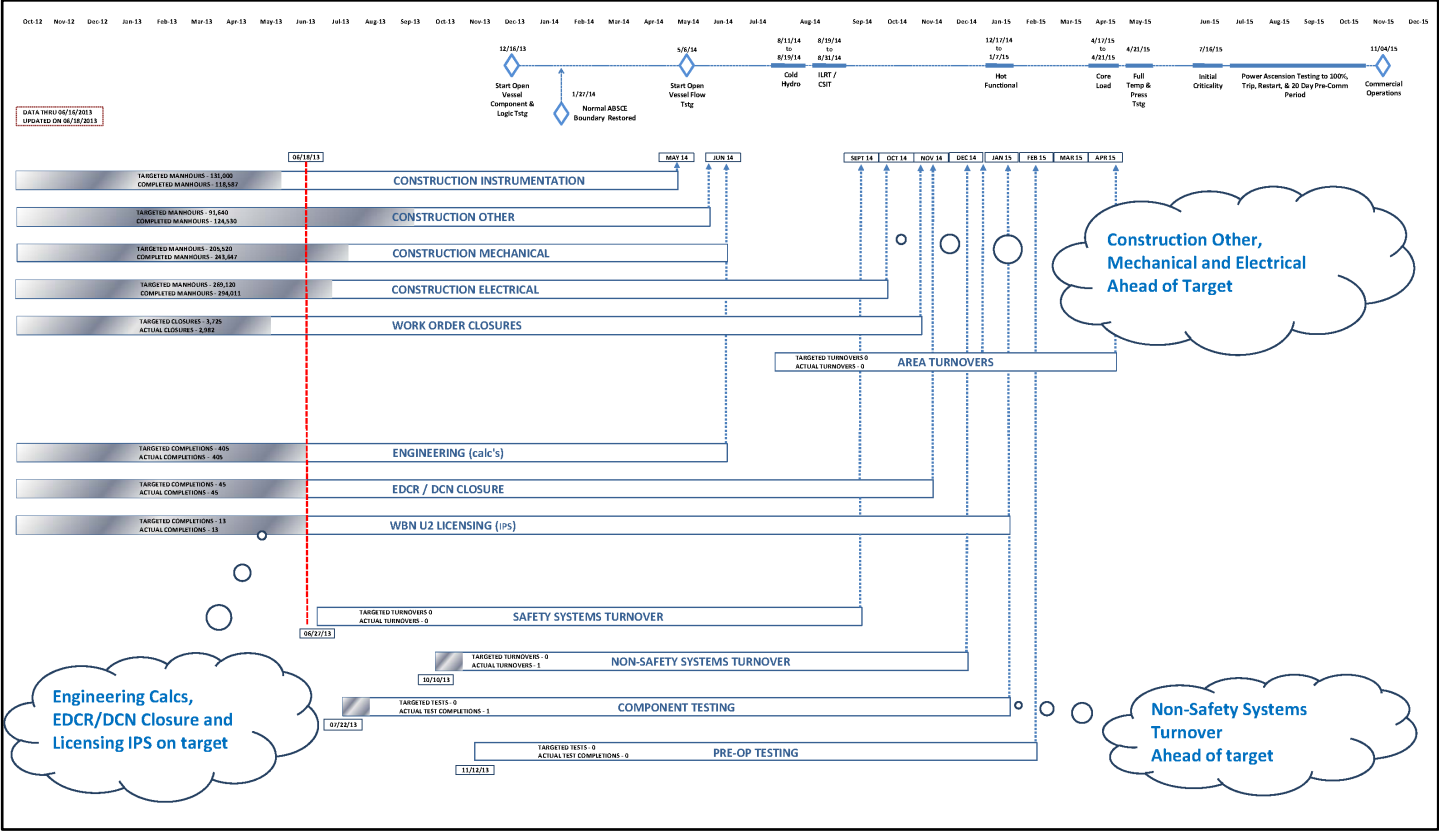
- **Physical plant approximately 80% complete**
- **System turnover logic supports open vessel testing in Spring 2014**
- **Meeting targets for safety, quality, cost, and schedule**

Watts Bar 2 Today

- **Safety – Over 21.5 million work hours without a lost-time incident**
- **Quality Acceptance Rate tracking above 95%**

Watts Bar 2	Aggressive	Most Likely	Upper Range
Completion Cost	\$4.0 Billion	\$4.2 Billion	\$4.5 Billion
Commercial Operation	September 2015	December 2015	June 2016

Watts Bar 2 Completion Status



Lesson Learned - Plan

- **Develop clear execution strategy**
 - **Ensure consistency in direction**
 - **Reflect alignment for roles, responsibilities, and interfaces**
 - **Support construction, system turnover, testing, operational readiness, and startup phases**

Lesson Learned - Organize

- **Put right people in the right jobs**
- **Establish a staffing strategy that employs a highly experienced core leadership team**
- **Use staffing approach suited for large construction projects**

Lesson Learned - Measure

- **Measure what needs to be achieved**
- **Schedule adherence is a key element**
- **Broader measure needed to integrate and adjust overall factors as project progresses**

Lesson Learned – Build Work Environment

- **Make safety paramount**
- **Work as one team safer, better, and more efficiently**
- **Effectively communicate project information**
- **Remove barriers to success**

Watts Bar 2 Summary

- **Make safety paramount**
- **Have a well developed strategy**
- **Organize to achieve goals**
- **Use right metrics**
- **Expect issues and challenges**
- **Engage the workforce**