

Unicoi County Cancer Information

**Incidence and Mortality Data
1990-2006 (where available)**

La'Shan D. Taylor MS, MPH

Environmental Epidemiologist

Northeast Tennessee Regional Health Office

Important Cancer Facts To Remember

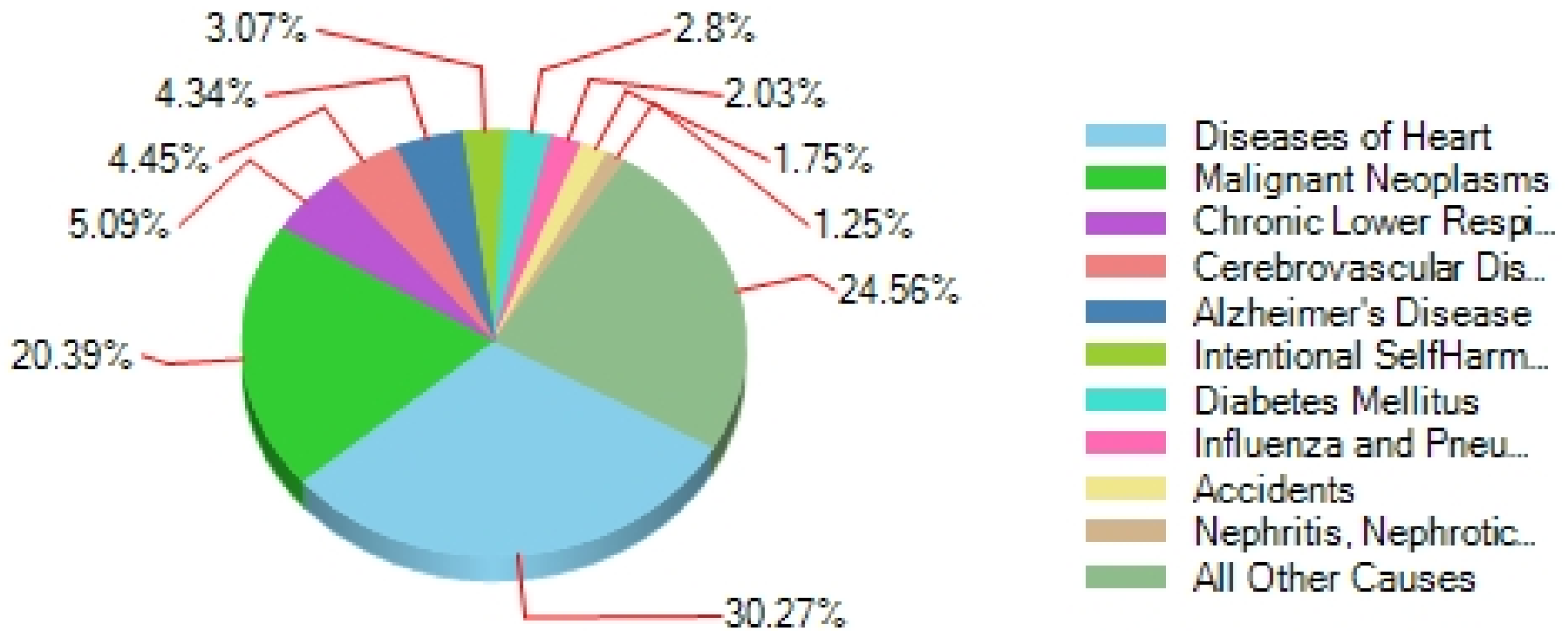
- **Cancer is not just one disease, but is a term used to describe at least 100 different but related diseases.**
- **Cancer is the second leading cause of death in the U.S., following heart disease.**
- **About 30% of Americans now living will eventually develop cancer.**
- **Over the years, cancer will strike about three out of four families.**
- **More than 10 years can go by between the exposure to a carcinogen and a diagnosis of cancer.**
- **Cancers are influenced by a combination of factors.**
- **About 1.2 million Americans are diagnosed with cancer each year.**

Important Cancer Facts To Remember

- Cancer of the breast, prostate, lung, and colon represent about 50% of the U.S. cancer burden.**
- About 500,000 Americans die of cancer each year, totaling over 1,500 people per day.**
- 1 in 4 deaths in the U.S. is from cancer.**
- The overall U.S. cancer incidence and mortality rates are declining.**
- The Tennessee Cancer Registry does not report counts or rates of cancer when fewer than 6 cases are reported.**
- Small numbers of cases reduce the validity of statistical analyses.**

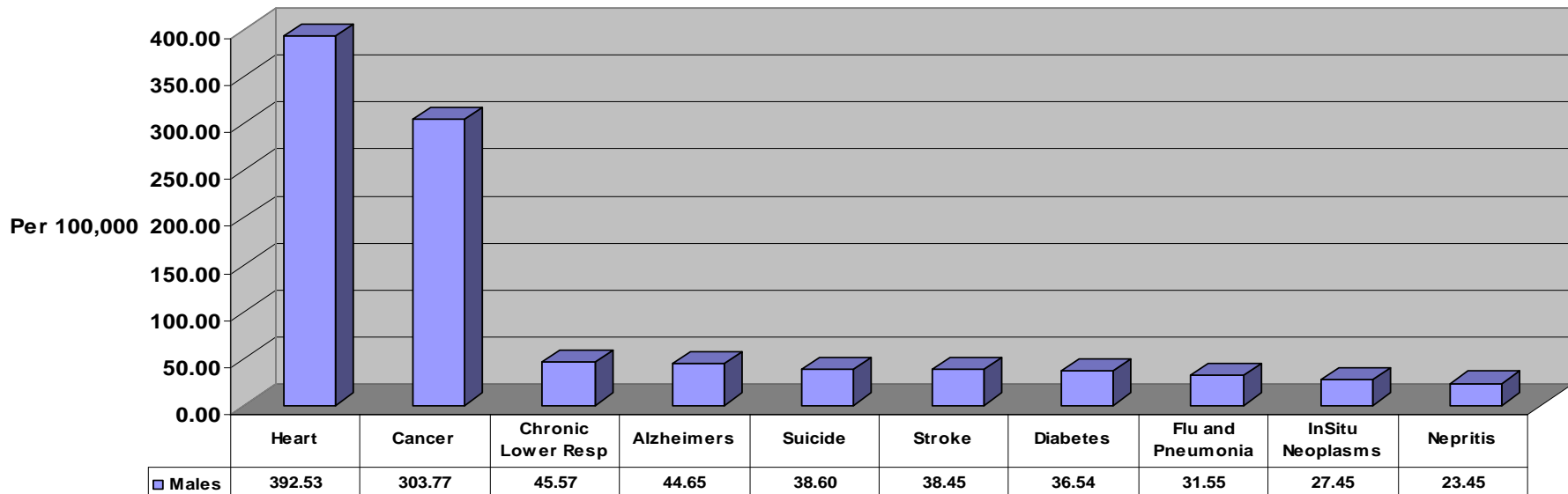
Top 10 Causes of Death in Unicoi County, TN 2006

Age Adjusted for All Races and Both Sexes

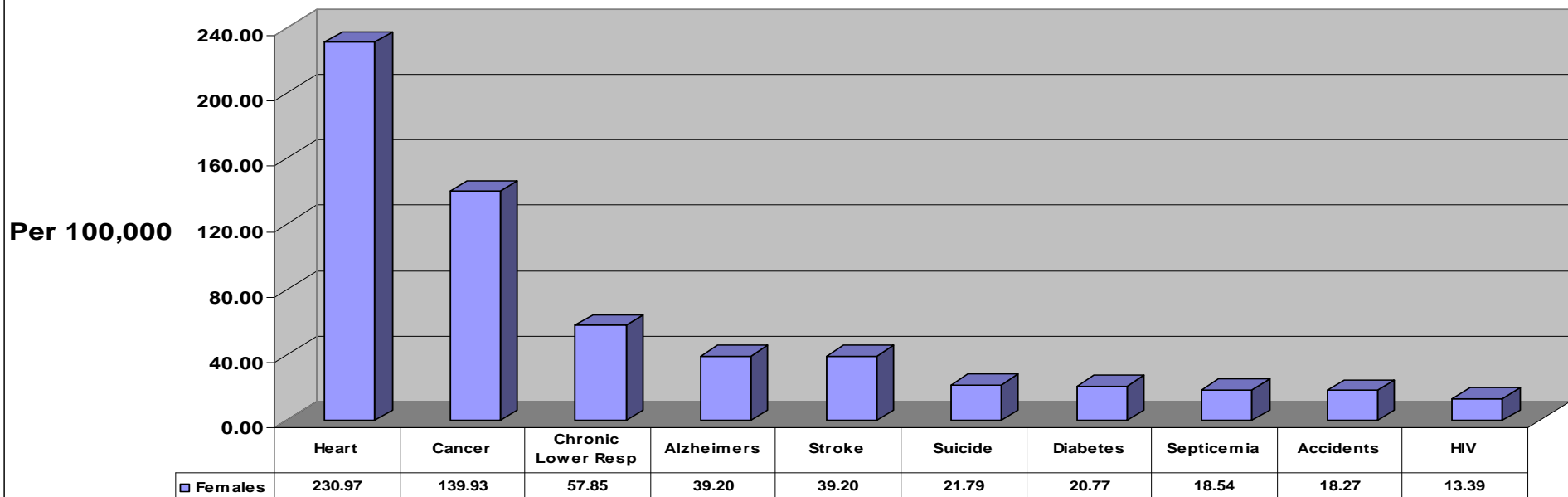


Unicoi

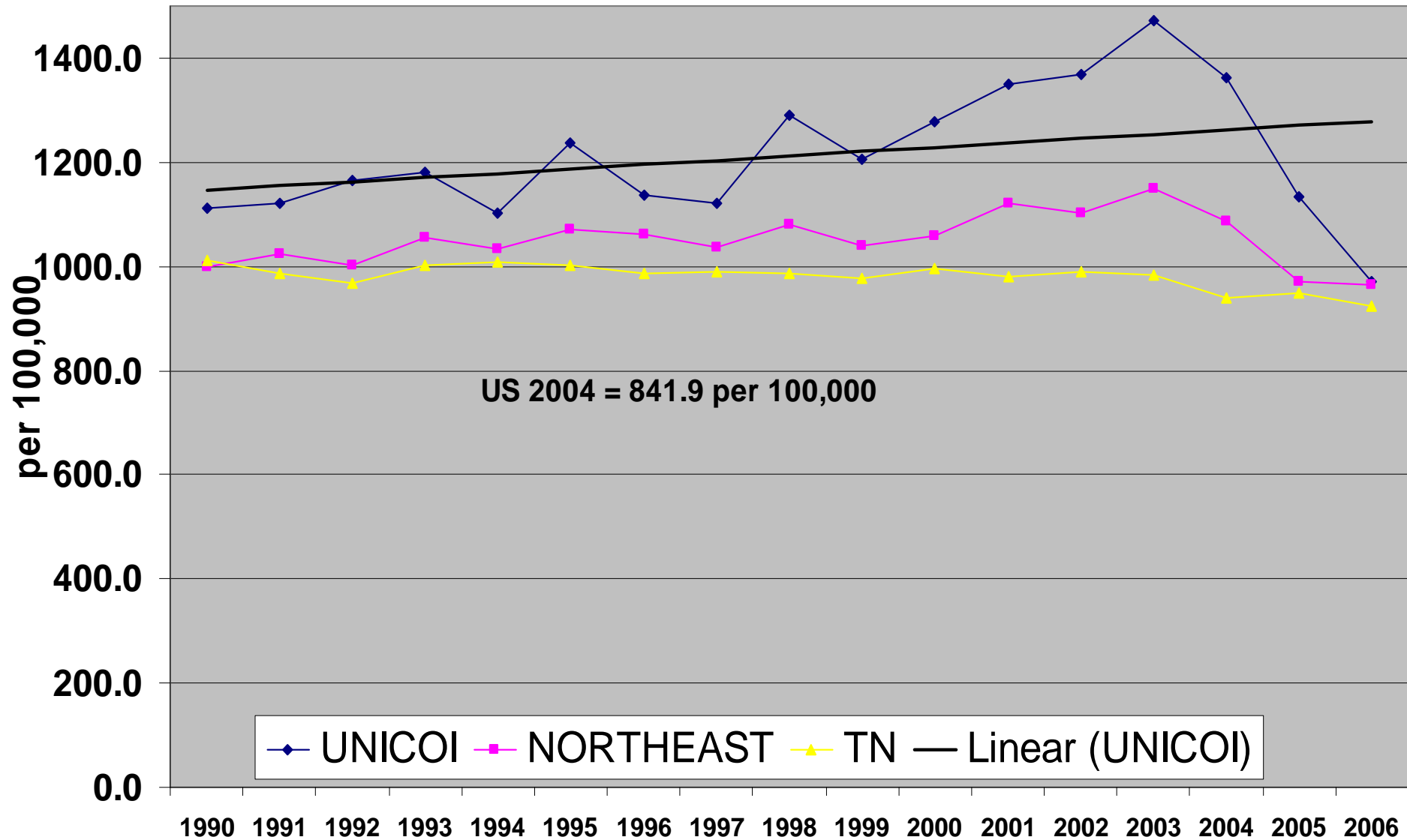
**Top 10 Leading Causes of Death in Unicoi Co., TN
Age Adjusted Death Rate for 2006, All Races, Both Sexes**



**Top 10 Leading Causes of Death in Unicoi Co., TN
Age Adjusted Death Rate for 2006, All Races, For Females**



Age-Standardized All Causes of Death Rates 1990-2006 Unicoi Co., Northeast TN, TN, Unicoi Co. 17-Year Mean, 1212.2 per 100,000



Data Source: Tennessee Dept of Health, Div of Health Statistics.
Death Statistical System, 1990-2006, Nashville, TN

Unicoi County Cancer Incidence Rates 2004 and 2005

- These are the first 2 years that the Cancer Registry reports having complete data
- **2004 For all Cancers = 506 (417~610) per 100,000**
 - TN Cancer Incidence Rate = 481 (476~487) per 100,000
 - US Cancer Incidence Rate = 458 (457~459) per 100,000
- **2005 For all Cancers = 446 (363~544) per 100,000**
 - TN Cancer Incidence Rate = 510 (505~516)

Unicoi County Cancer Incidence

(2001-2005 Average)

Age Adjusted, *All Ages, Both Sex, All Races, By Cancer Site*

- **Lung and Bronchus: 65.3 per 100,000**
- **Colon and Rectum: 42 per 100,000**
- **Pancreas: 7.3 per 100,000**
- **Non-Hodgkin Lymphoma: 16 per 100,000**
- **Lymphocytic Leukemia: 10.9 per 100,000**
- **Chronic Lymphocytic Leukemia: 5.5 per 100,000**

Unicoi County Cancer Incidence

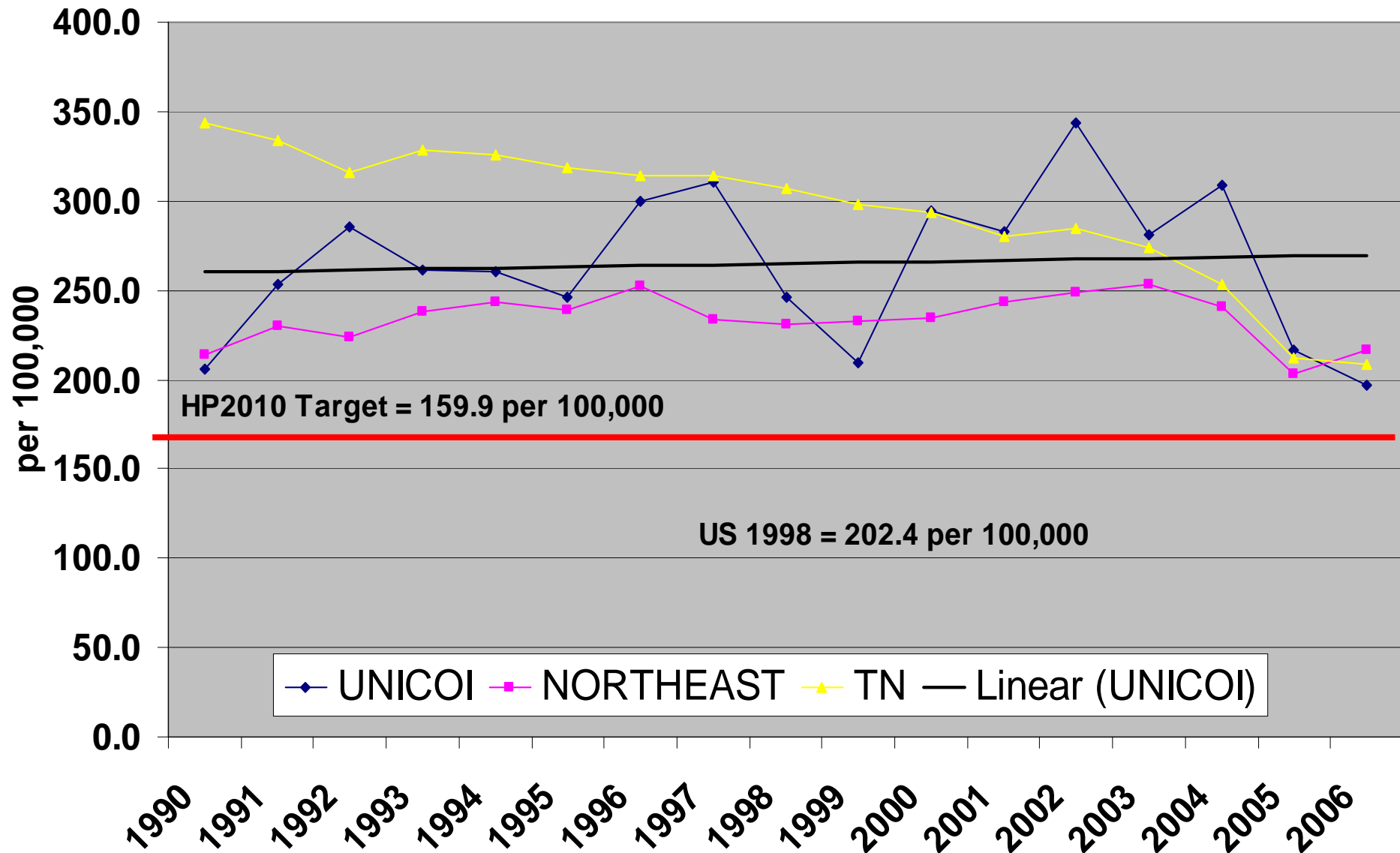
(1999-2003 Average)

Age Adjusted, All Ages, By Sex, All Races

- **Breast Cancer (Females only) = 114.1 per 100,000**
 - TN Rate = 116.5 per 100,000

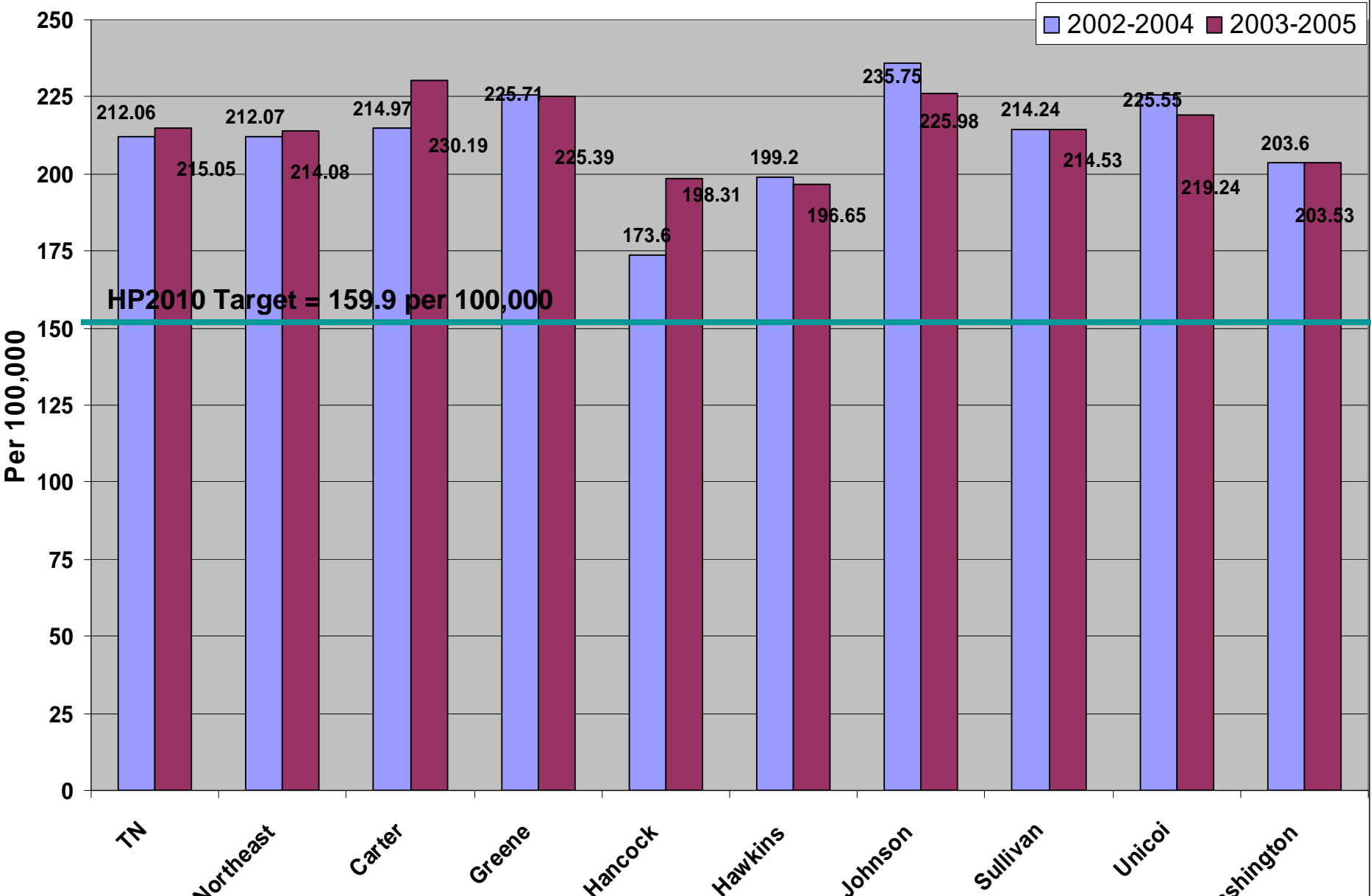
- **Prostate Cancer (Males only) = 98.6 per 100,000**
 - TN Rate = 113.1 per 100,000

**Age-Standardized All Cancers Deaths Rates 1990-2006 Unicoi Co, Northeast TN,
TN Unicoi Co. 17-Year Mean Rate = 264.8 per 100,000**



Data Source: Tennessee Dept of Health, Div of Health Statistics.
Death Statistical System, 1990-2004, Nashville, TN

Age Adjusted All Cancers Mortality Rate per 100,000 Population in TN, Northeast Region, and Northeast Counties, 2002-2004 and 2003-2005 Averages, All Races, Both Sexes



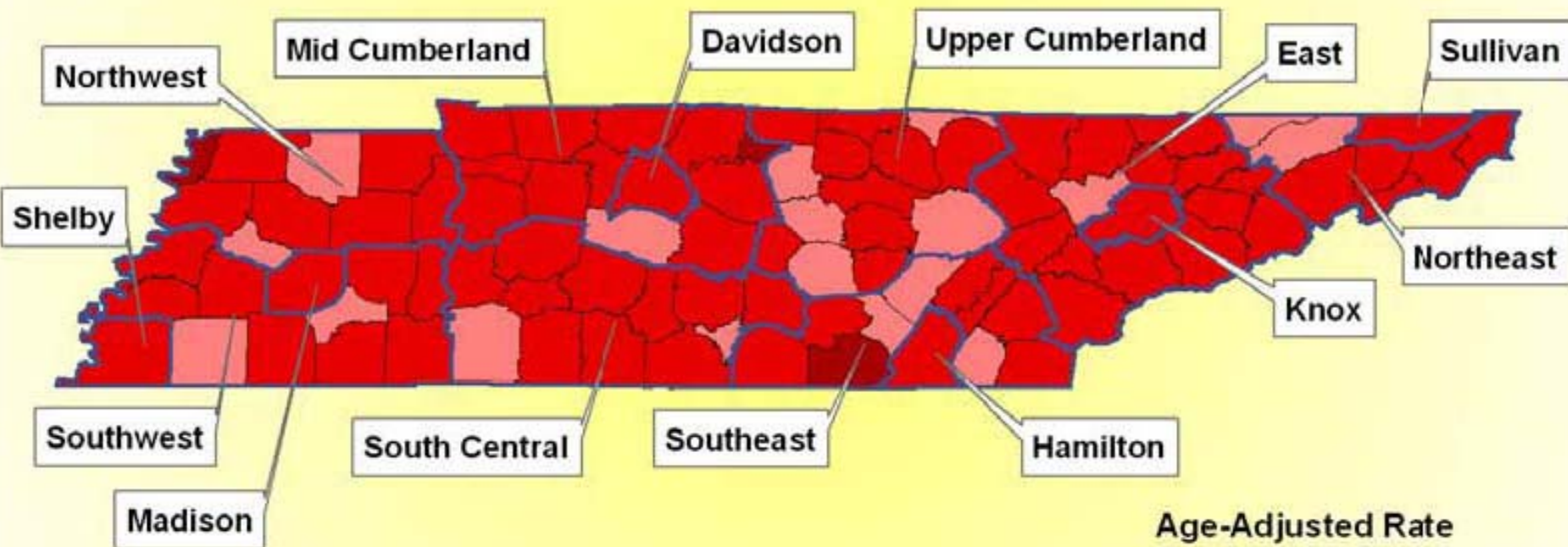
HP2010 Target = 159.9 per 100,000

2002-2004 2003-2005

Data Source: Tennessee Dept of Health, Div of Health Statistics.
 Death Statistical System, 1990-2004, Nashville, TN

Cancer, 1999-2004

Age-Adjusted Mortality Rate

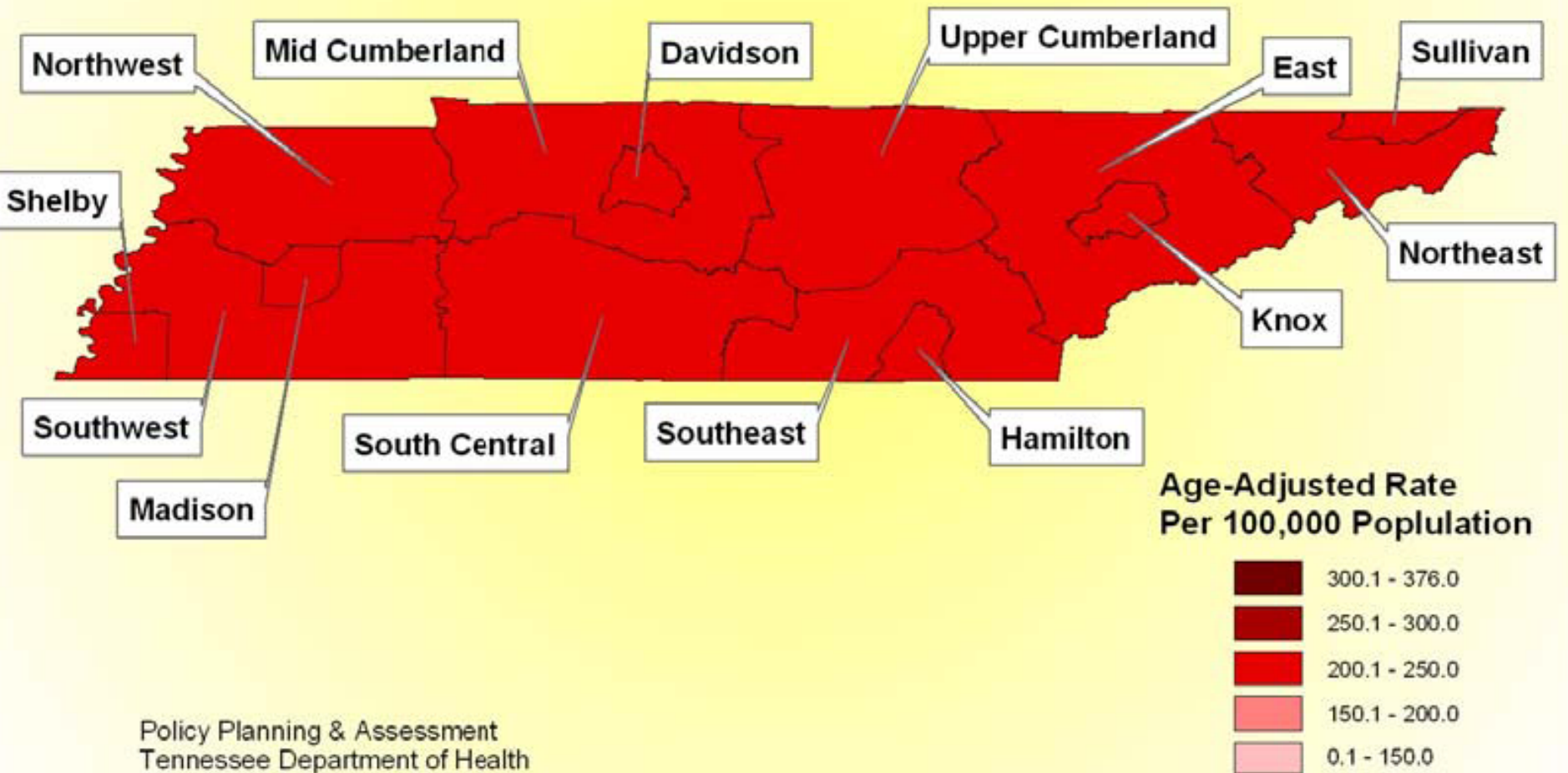


Age-Adjusted Rate
Per 100,000 Population



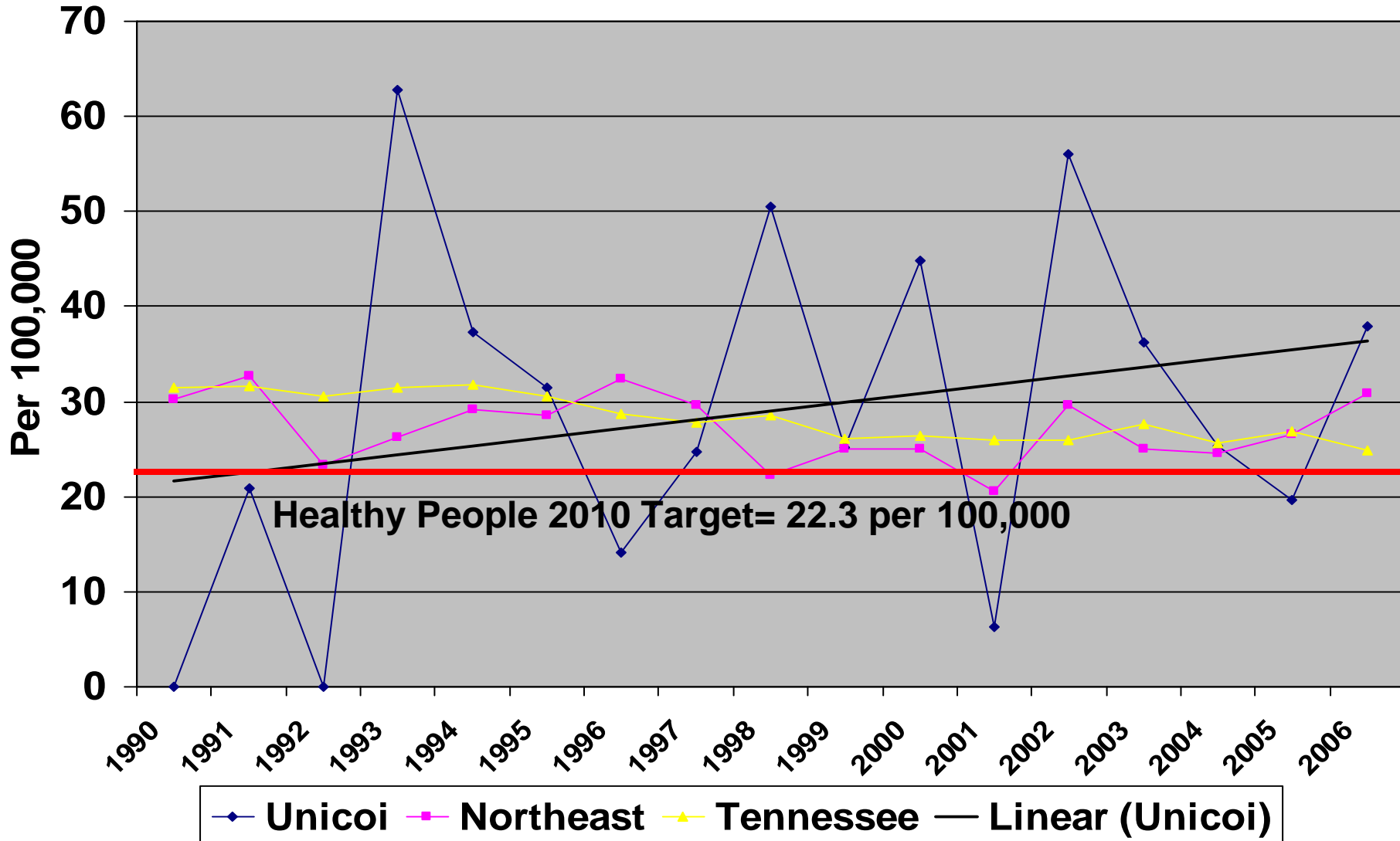
Cancer, 1999-2004

Age-Adjusted Mortality Rate - Regions Only



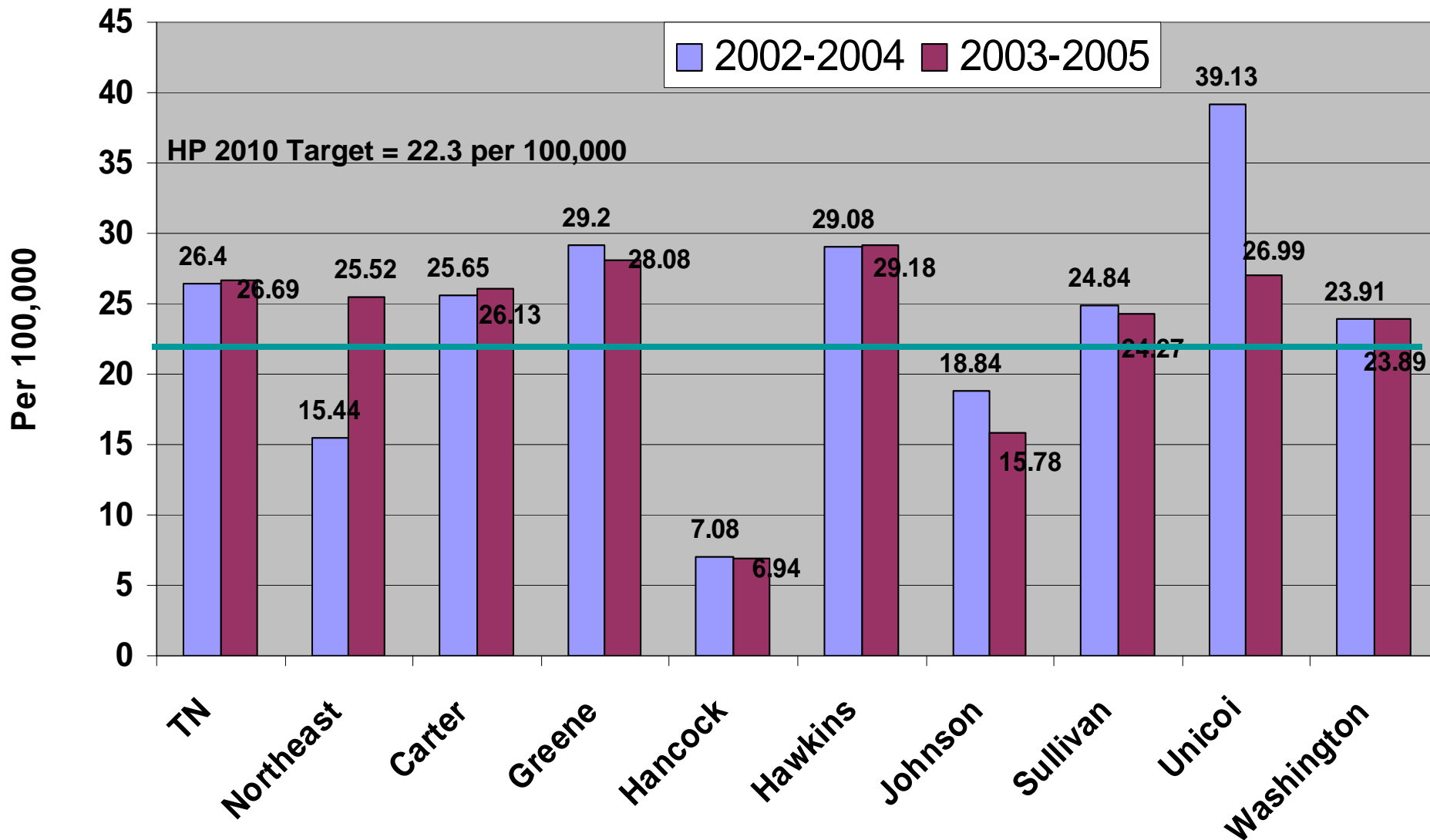
Age-Adjusted Breast Cancer Death Rates for Females per 100,000

Females, All Races, All Ages, Unicoi Co, Northeast, and TN 1990-2006



Age Adjusted using the 2000 Standard Population (2003 Estimation Method)
 Source: Death Certificate Data (Tennessee Resident Data) Tennessee Department of Health

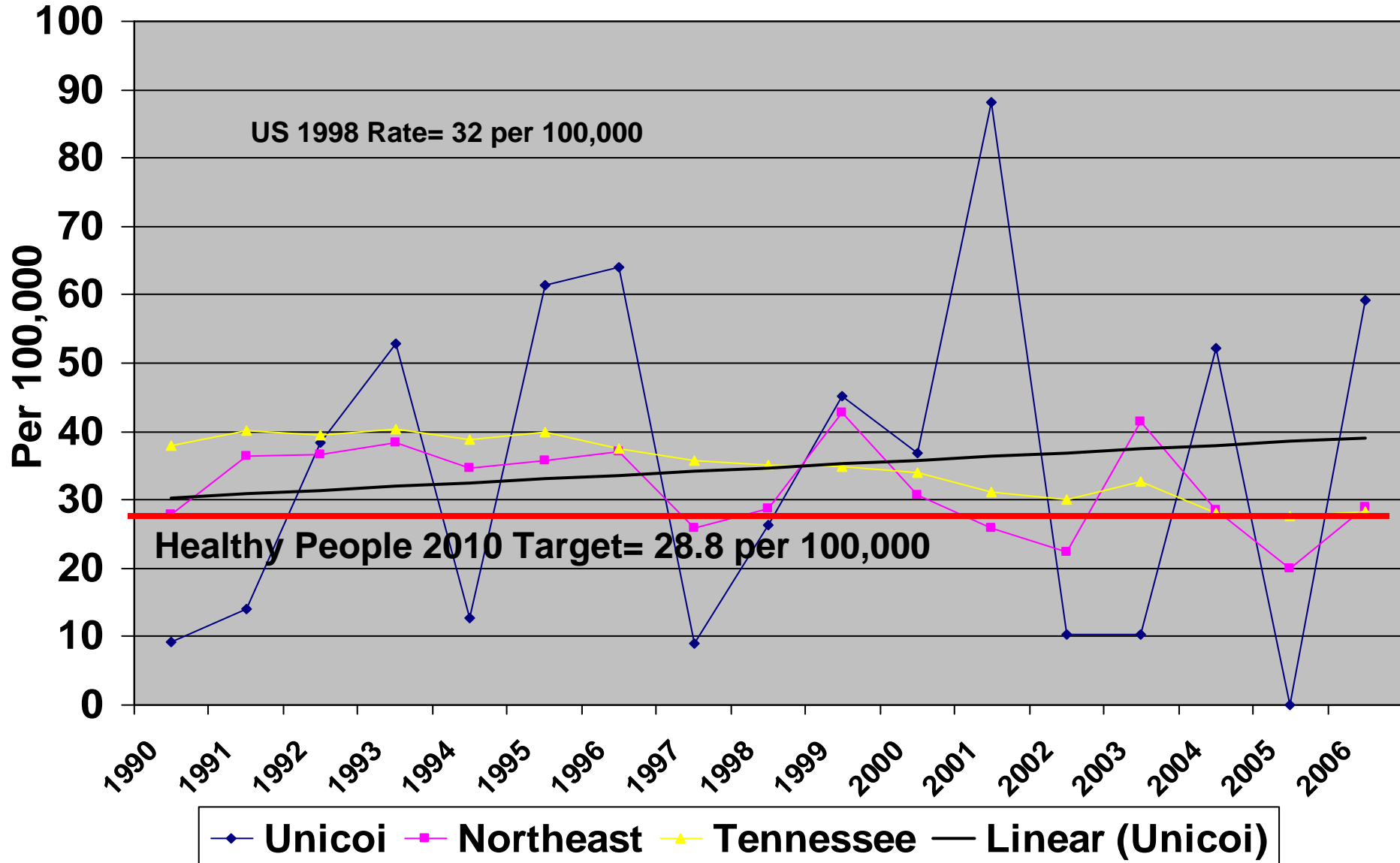
Age Adjusted Breast Cancer Mortality Rate per 100,000 Population in TN, Northeast Region, and Northeast Counties, 2002-2004 and 2003-2005, All Races, Females Only



Data Source: Tennessee Dept of Health, Div of Health Statistics.
 Death Statistical System, 1990-2004, Nashville, TN

Age-Adjusted Prostate Cancer Death Rates for Males per 100,000

Males, All Races, All Ages, Unicoi Co, Northeast, and TN 1990-2006

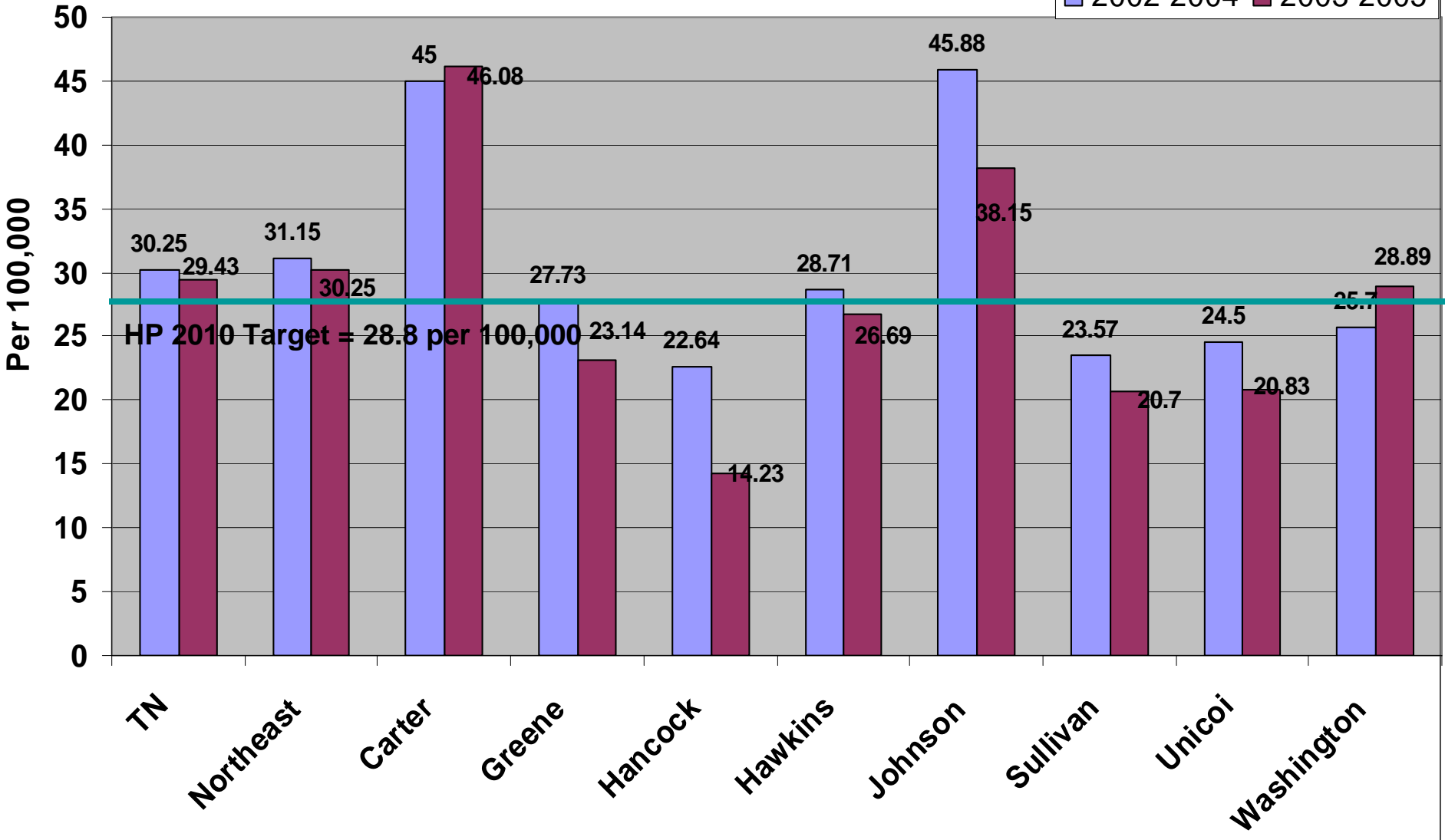


Age Adjusted using the 2000 Standard Population (2003 Estimation Method)

Source: Death Certificate Data (Tennessee Resident Data) Tennessee Department of Health

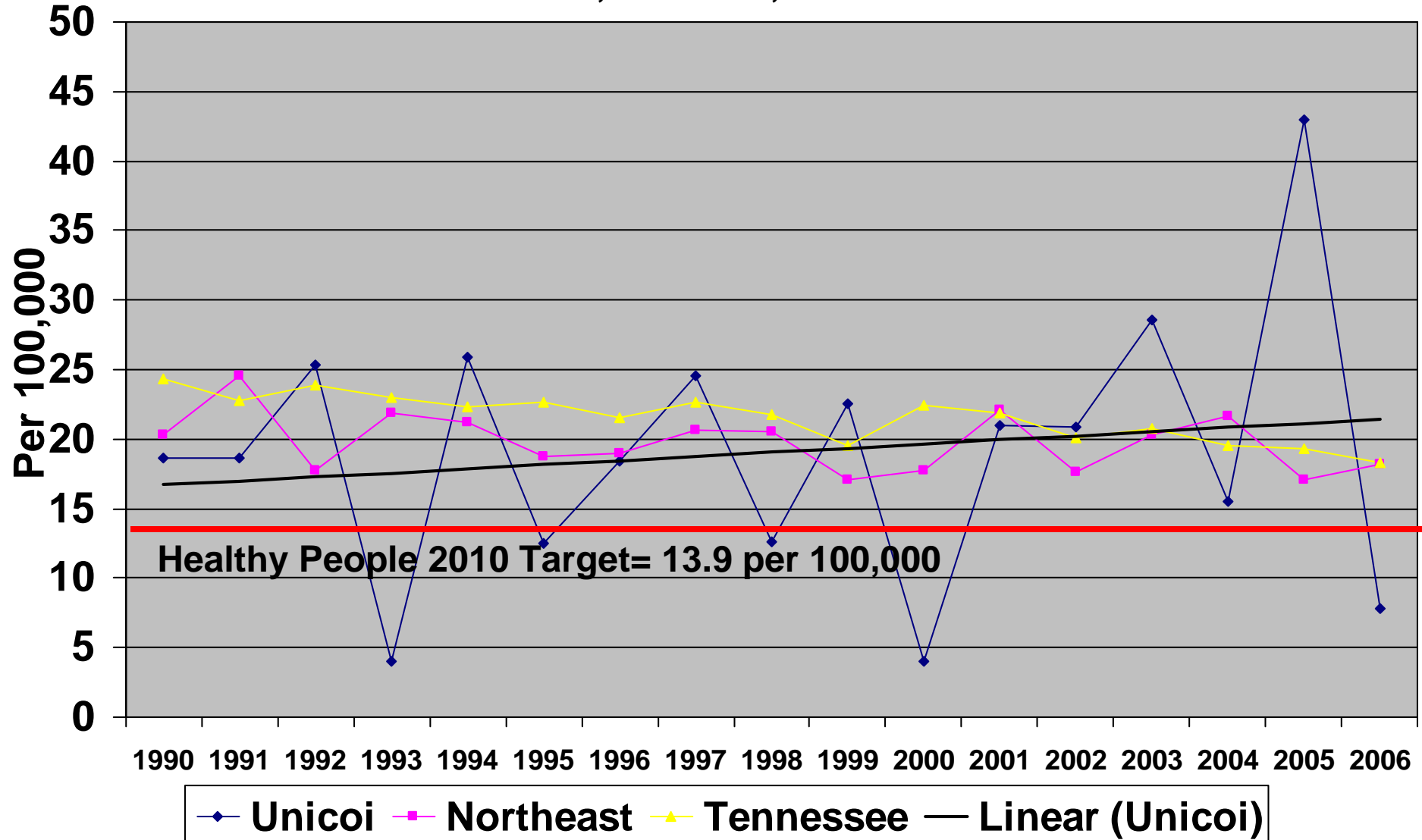
Age Adjusted Prostate Cancer Mortality Rate per 100,000 Population in TN, Northeast Region, and Northeast Counties, 2002-2004, All Races, Males Only

2002-2004 2003-2005



Data Source: Tennessee Dept of Health, Div of Health Statistics.
 Death Statistical System, 1990-2004, Nashville, TN

Age-Adjusted Colon (including rectum and anus) Cancer Death Rates per 100,000, All Races, All Ages, Both Sexes Unicoi Co, Northeast, and TN 1990-2006

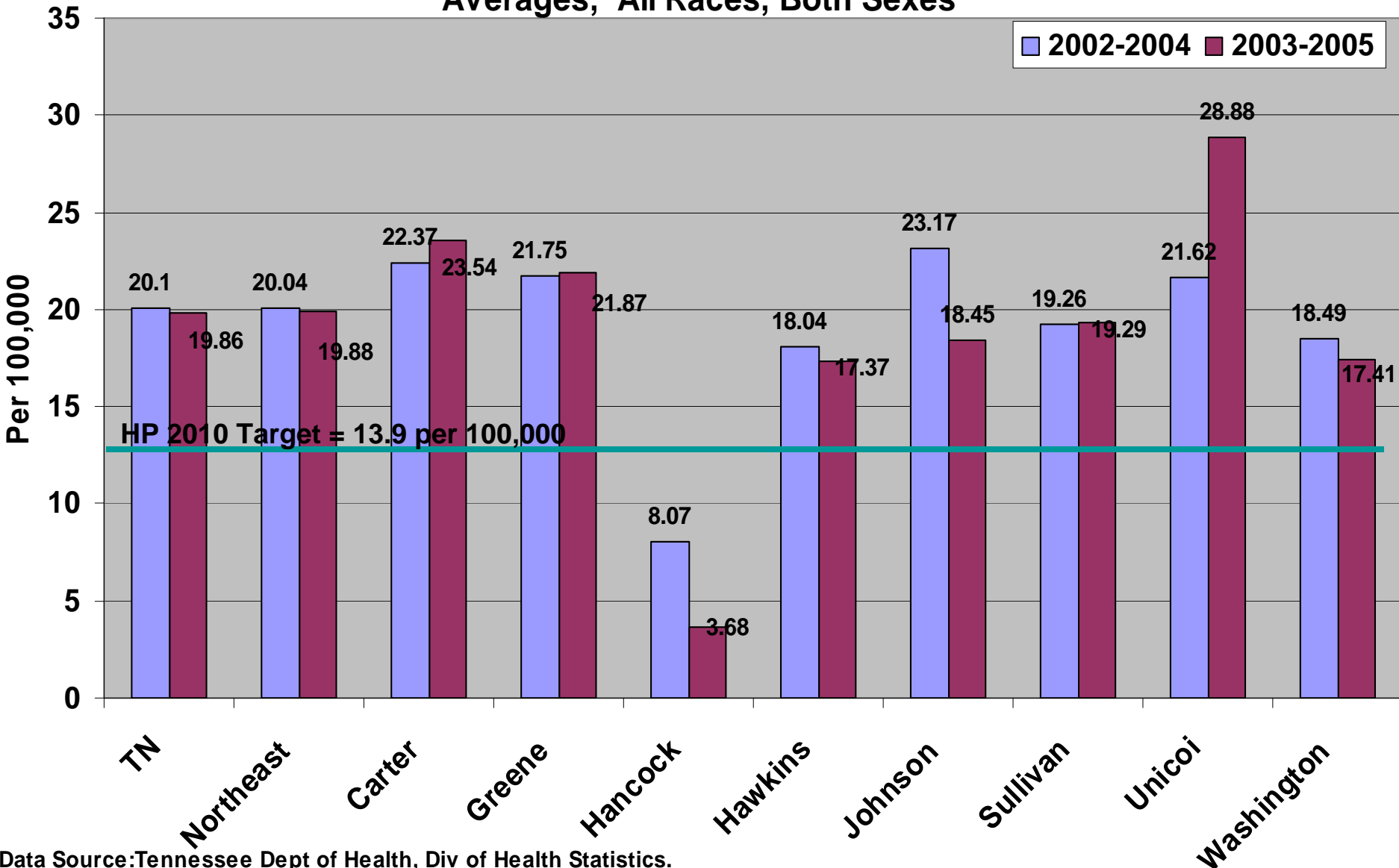


Age Adjusted using the 2000 Standard Population (2003 Estimation Method)

Source: Death Certificate Data (Tennessee Resident Data) Tennessee Department of Health

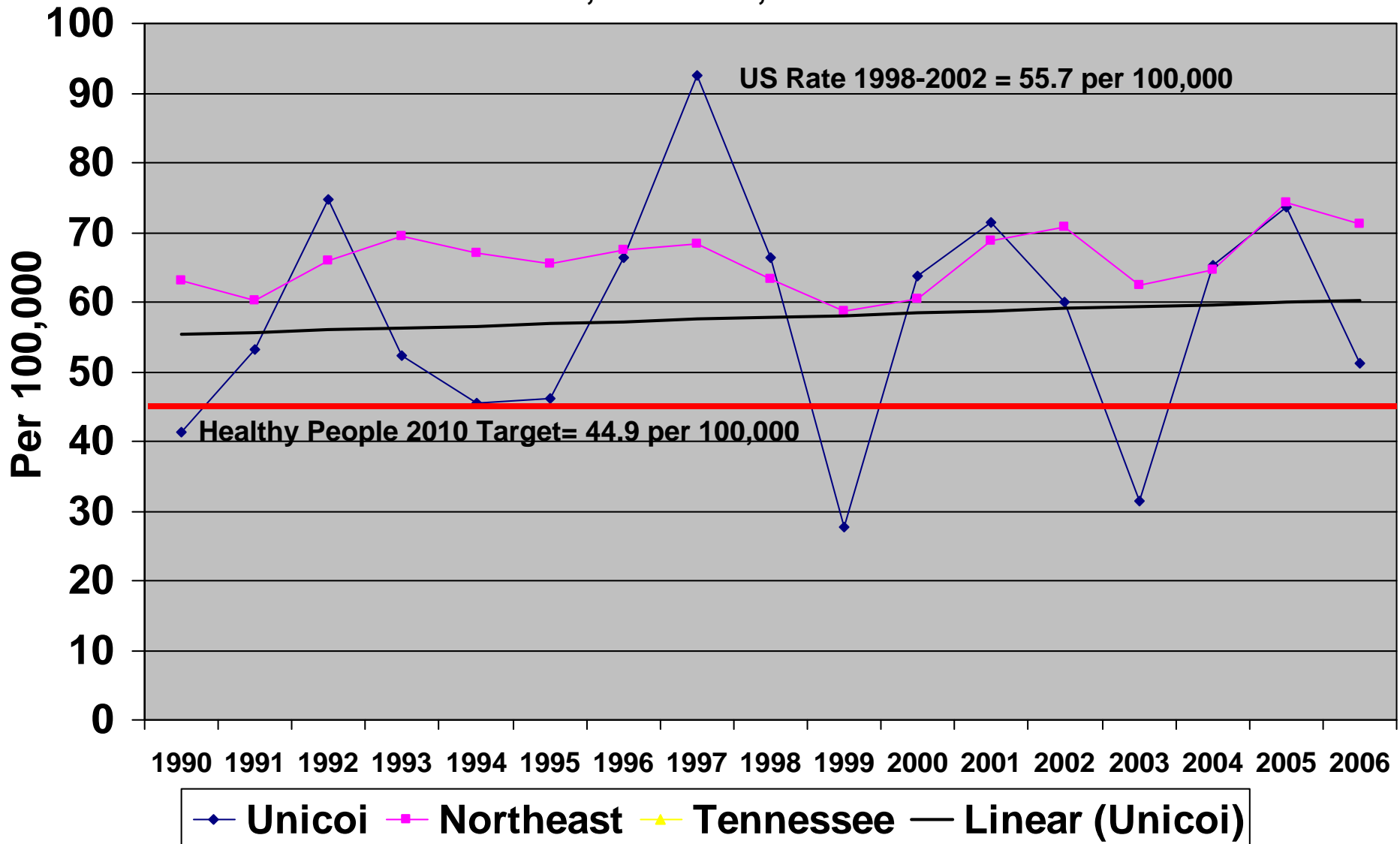
Age Adjusted Colon Cancer Mortality Rate per 100,000 Population in TN, Northeast Region, and Northeast Counties, 2002-2004 and 2003-2005

Averages, All Races, Both Sexes



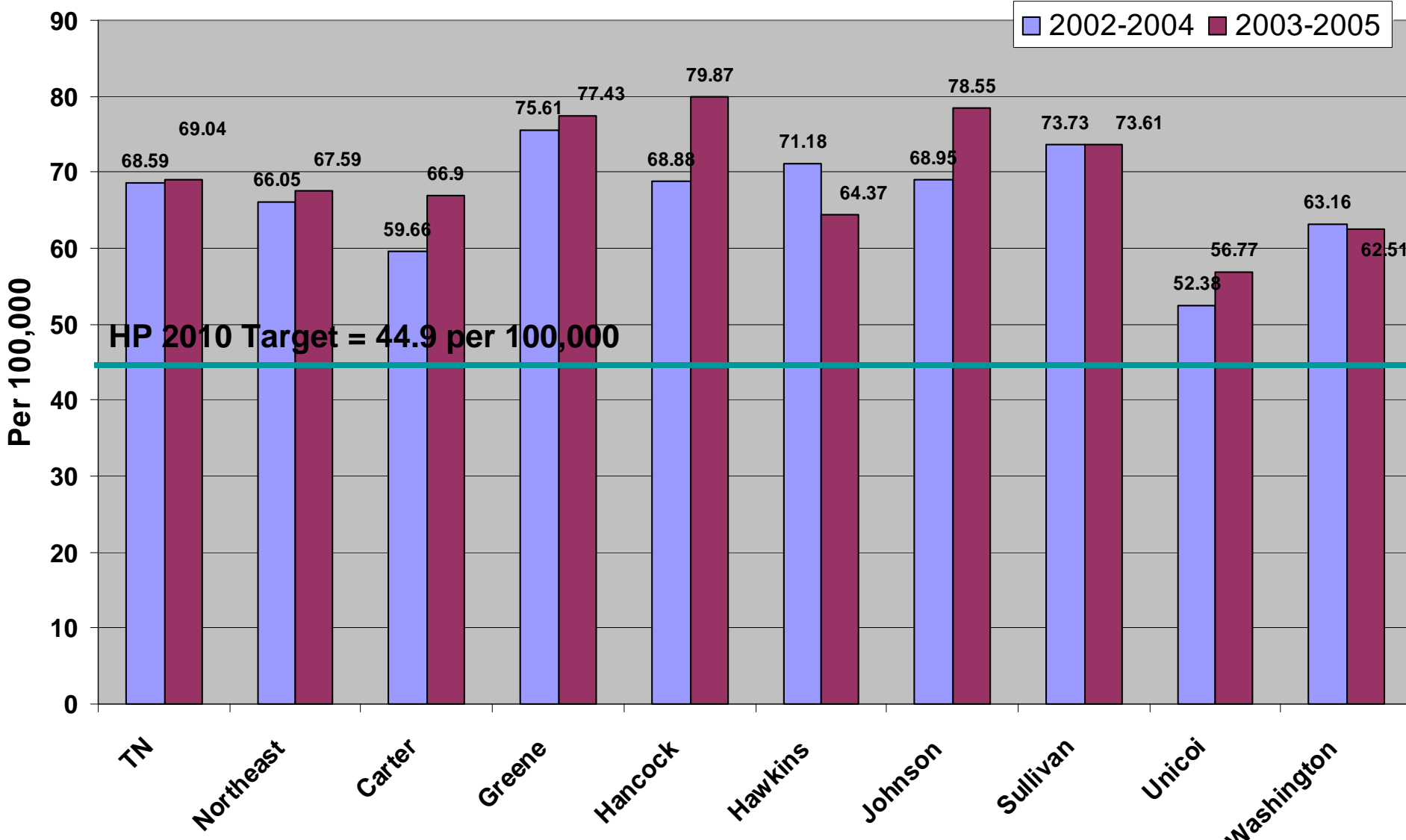
Data Source: Tennessee Dept of Health, Div of Health Statistics.
 Death Statistical System, 1990-2004, Nashville, TN

Age-Adjusted Lung Cancer (including trachea and bronchus) Death Rates per 100,000, All Races, All Ages, Both Sexes Unicoi Co, Northeast, and TN 1990-2006



Age Adjusted using the 2000 Standard Population (2003 Estimation Method)
Source: Death Certificate Data (Tennessee Resident Data) Tennessee Department of Health

Age Adjusted Lung Cancer Mortality Rate per 100,000 Population in TN, Northeast Region, and Northeast Counties, 2002-2004 and 2003-2005 Averages, All Races, Both Sexes



HP 2010 Target = 44.9 per 100,000

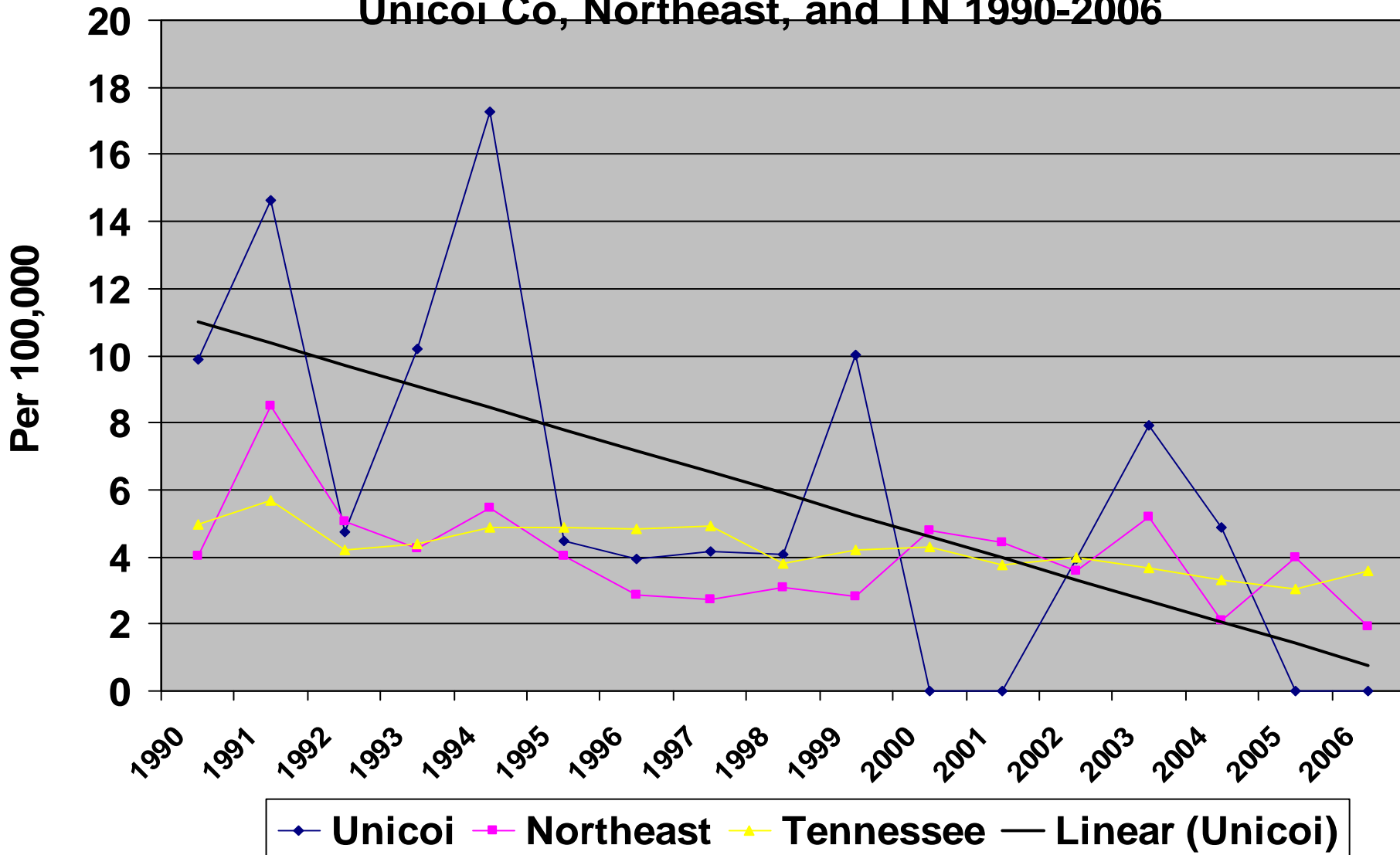
2002-2004 2003-2005

Data Source: Tennessee Dept of Health, Div of Health Statistics.
Death Statistical System, 1990-2004, Nashville, TN

Age-Adjusted Stomach Cancer Death Rates per 100,000

All Races, All Ages, Both Sexes

Unicoi Co, Northeast, and TN 1990-2006

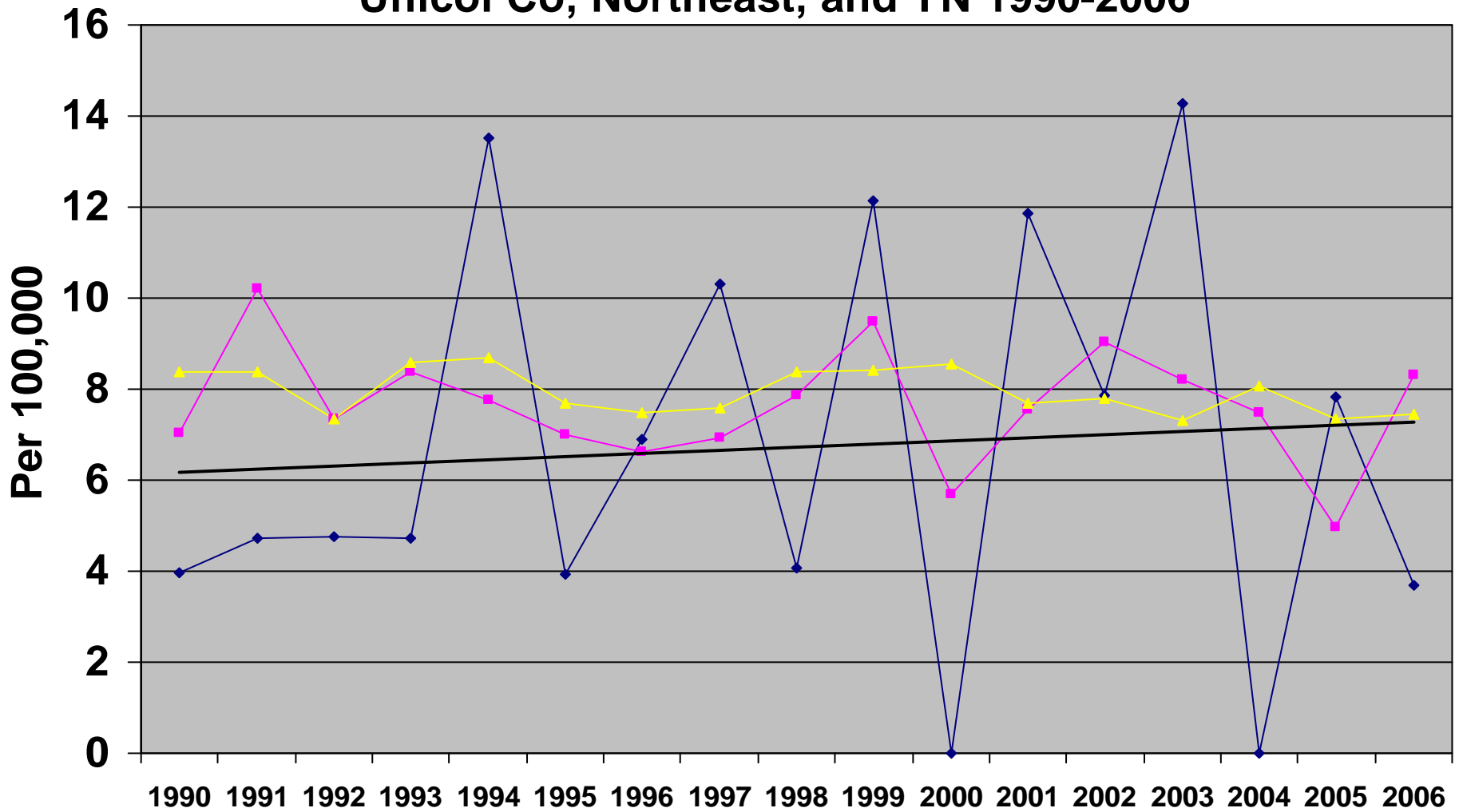


Age Adjusted using the 2000 Standard Population (2003 Estimation Method)
 Source: Death Certificate Data (Tennessee Resident Data) Tennessee Department of Health

Age-Adjusted Leukemia Cancer Death Rates per 100,000

All Races, All Ages, Both Sexes

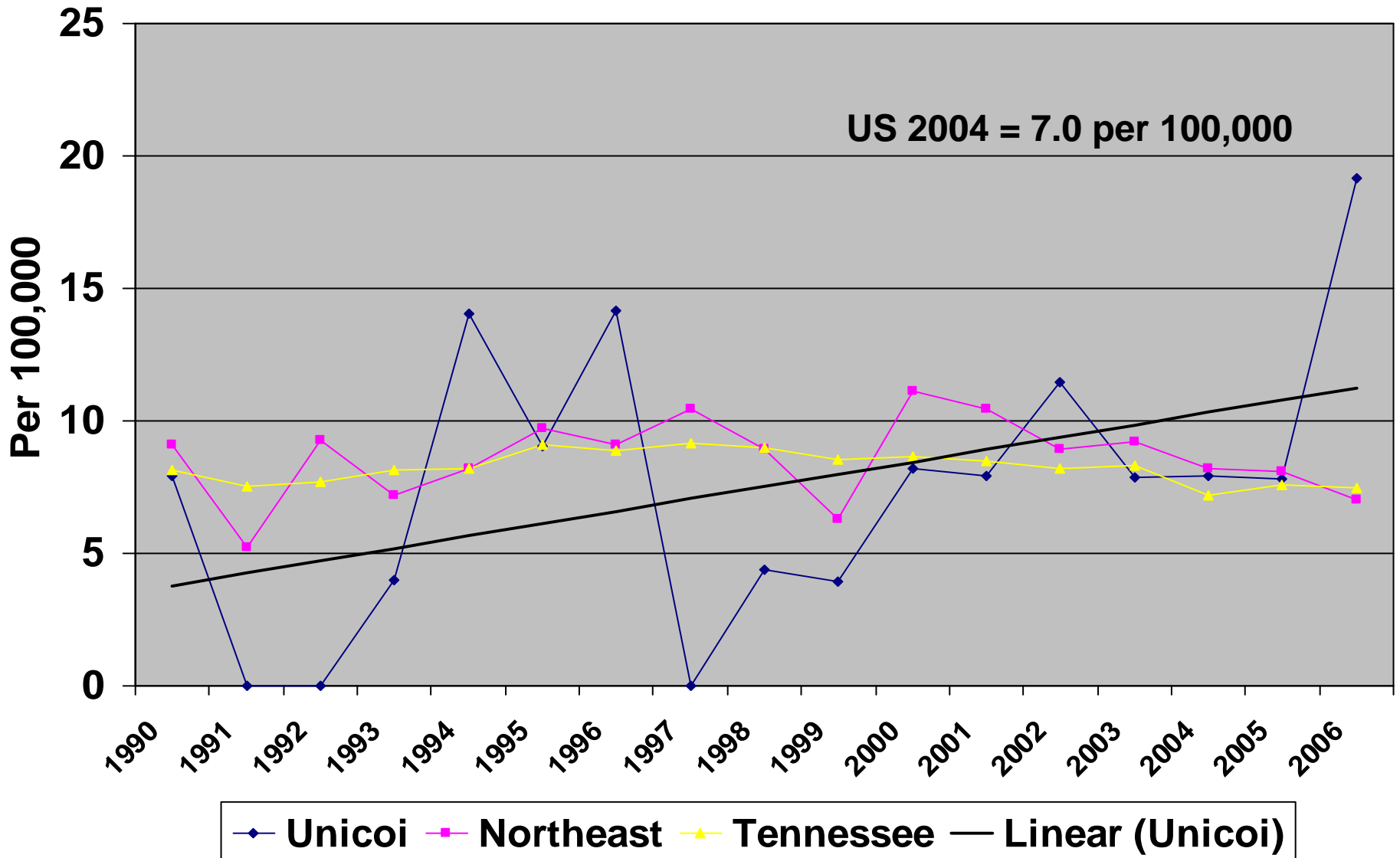
Unicoi Co, Northeast, and TN 1990-2006



◆ **Unicoi**
 ■ **Northeast**
 ▲ **Tennessee**
 — **Linear (Unicoi)**

Age Adjusted using the 2000 Standard Population (2003 Estimation Method)
 Source: Death Certificate Data (Tennessee Resident Data) Tennessee Department of Health

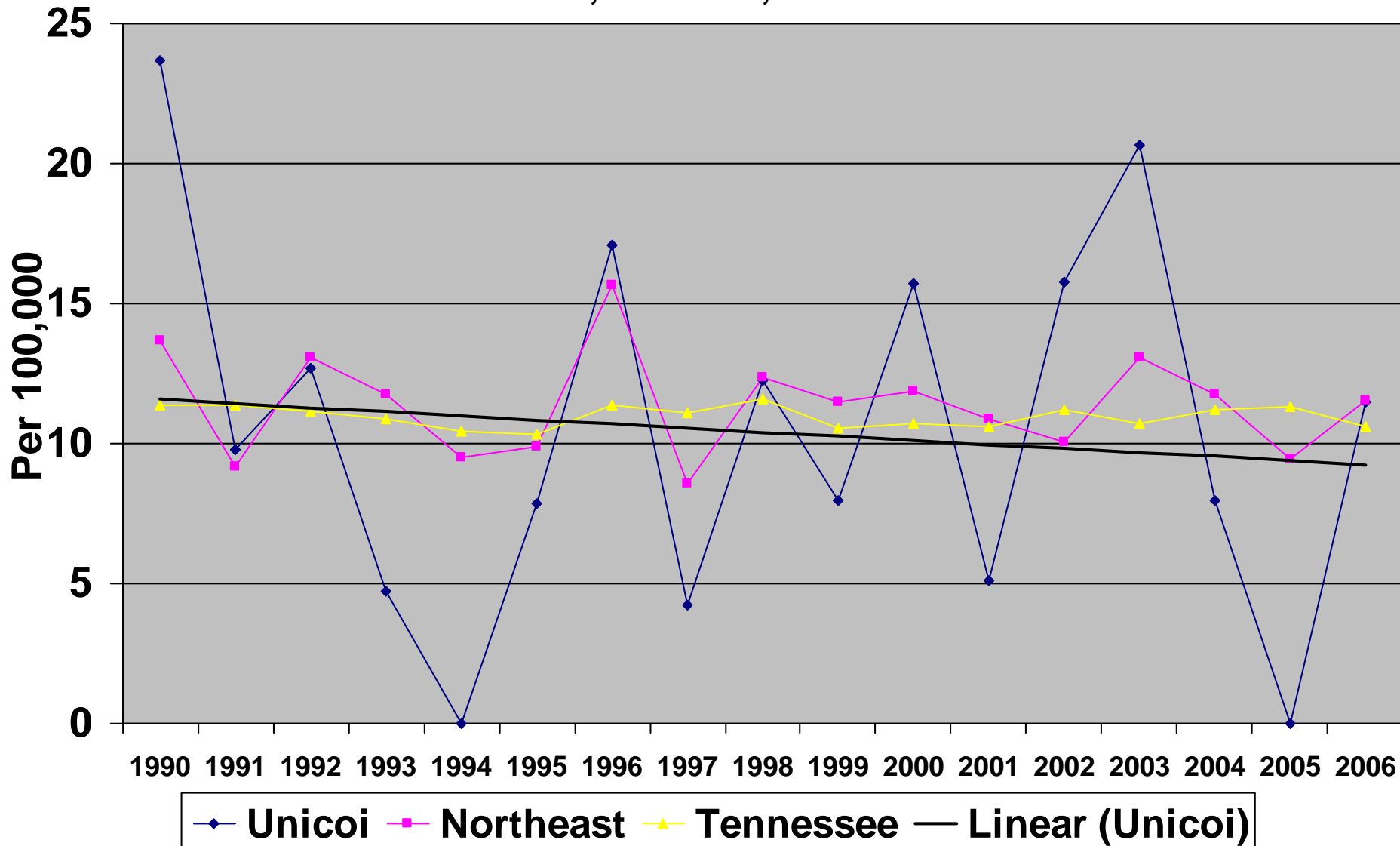
Age-Adjusted Non-Hodgkin's Lymphoma Cancer Death Rates per 100,000, All Races, All Ages, Both Sexes Unicoi Co, Northeast, and TN 1990-2006



Age Adjusted using the 2000 Standard Population (2003 Estimation Method)
 Source: Death Certificate Data (Tennessee Resident Data) Tennessee Department of Health

Age-Adjusted Pancreatic Cancer Death Rates per 100,000, All Races, All Ages, Both Sexes

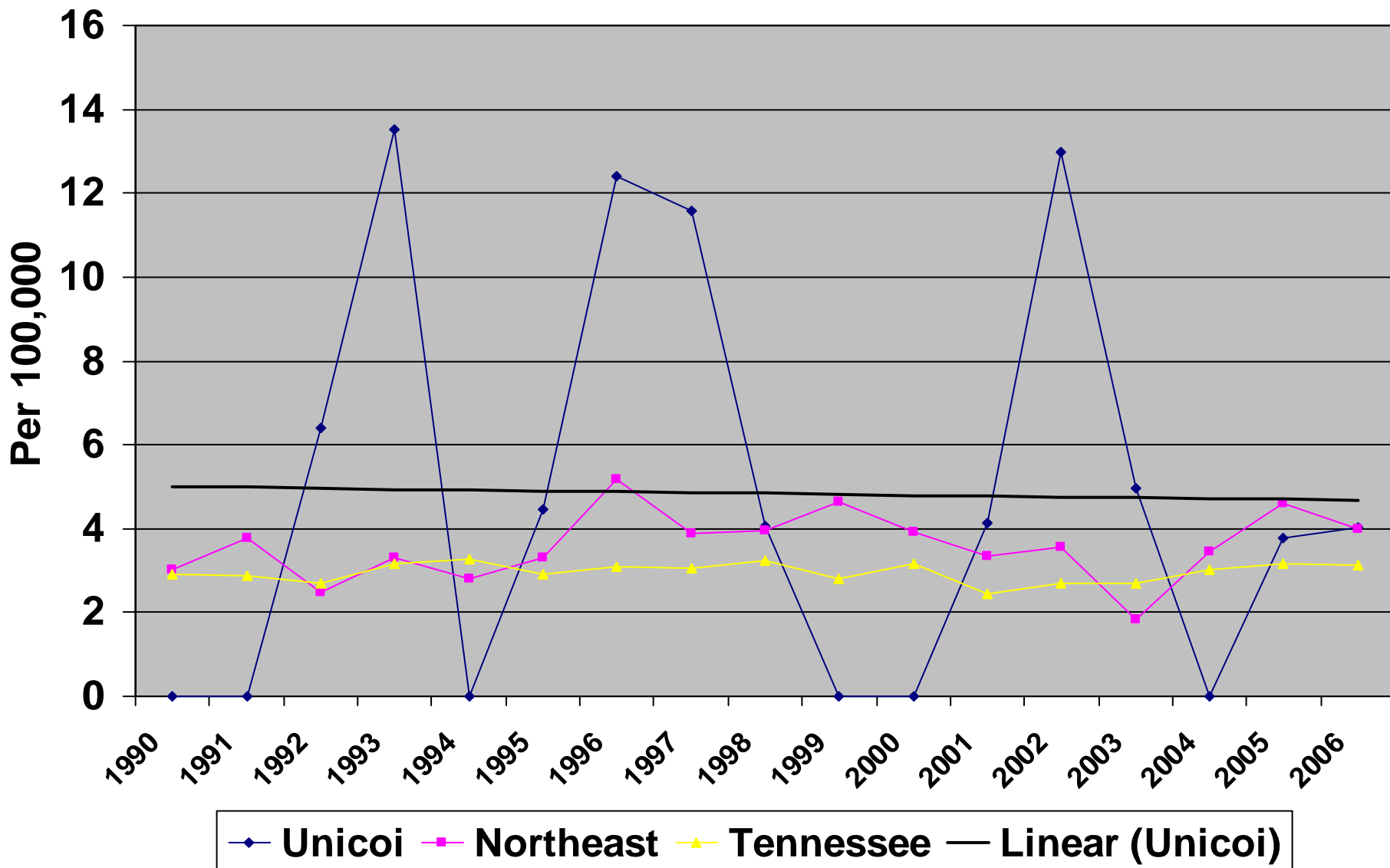
Unicoi Co, Northeast, and TN 1990-2006



Age Adjusted using the 2000 Standard Population (2003 Estimation Method)

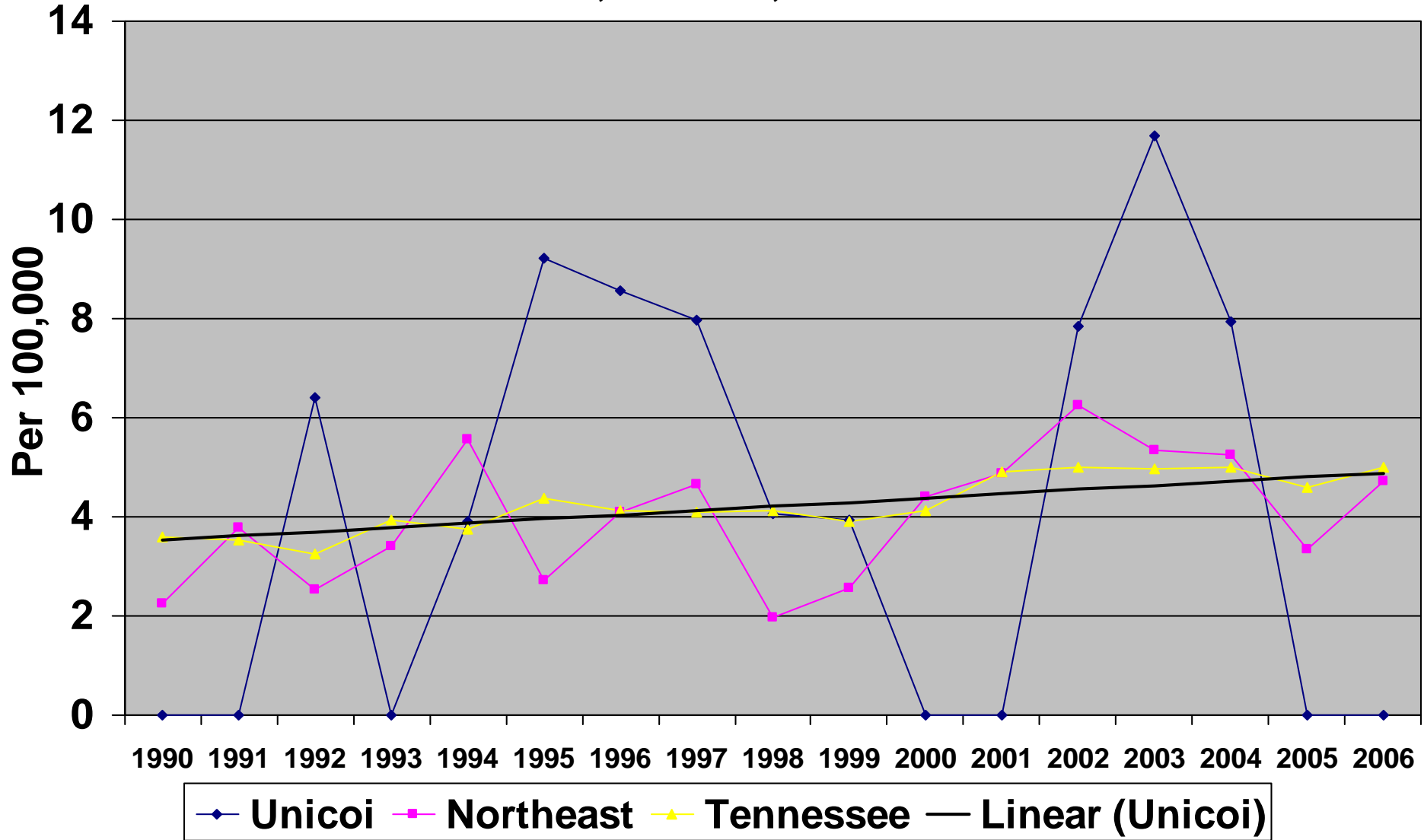
Source: Death Certificate Data (Tennessee Resident Data) Tennessee Department of Health

Age-Adjusted Melanoma of the Skin Cancer Death Rates per 100,000, All Races, All Ages, Both Sexes Unicoi Co, Northeast, and TN 1990-2006



Age Adjusted using the 2000 Standard Population (2003 Estimation Method)
 Source: Death Certificate Data (Tennessee Resident Data) Tennessee Department of Health

Age-Adjusted Liver and Intrahepatic Bile Ducts Cancer Death Rates per 100,000, All Races, All Ages, Both Sexes Unicoi Co, Northeast, and TN 1990-2006



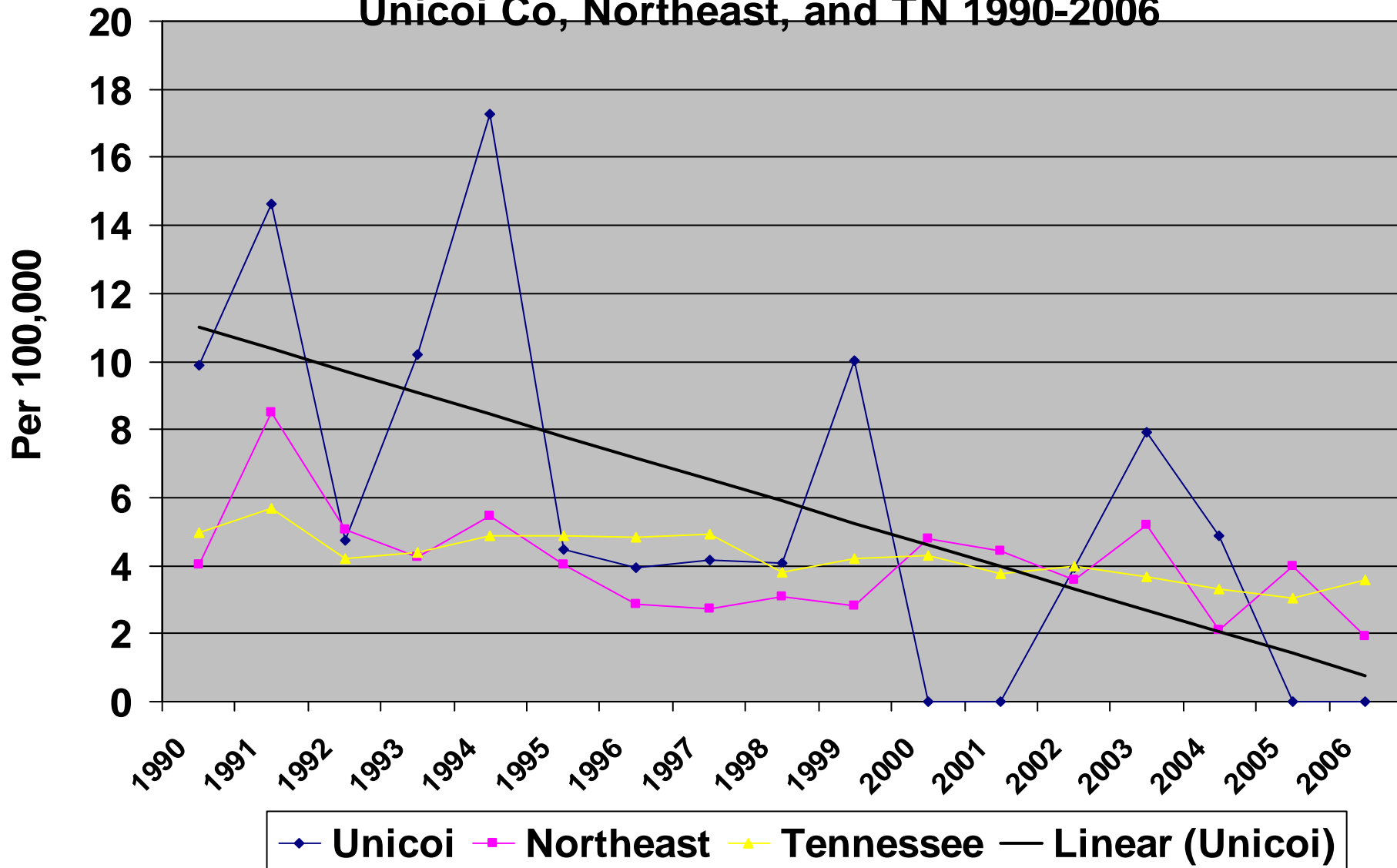
Age Adjusted using the 2000 Standard Population (2003 Estimation Method)

Source: Death Certificate Data (Tennessee Resident Data) Tennessee Department of Health

Age-Adjusted Stomach Cancer Death Rates per 100,000

All Races, All Ages, Both Sexes

Unicoi Co, Northeast, and TN 1990-2006



Age Adjusted using the 2000 Standard Population (2003 Estimation Method)
Source: Death Certificate Data (Tennessee Resident Data) Tennessee Department of Health