

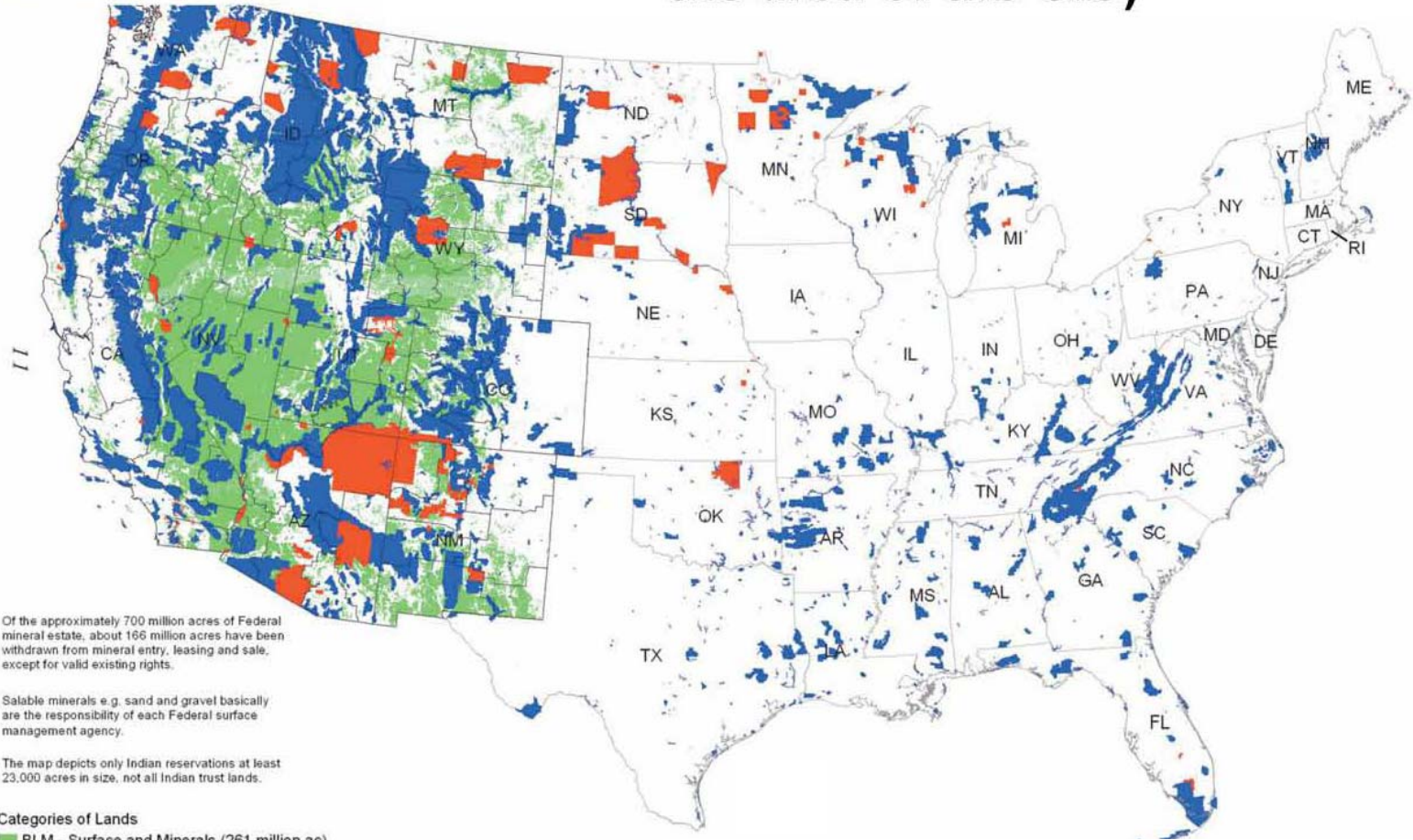
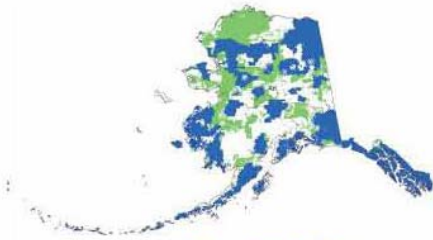
# BLM's Role in Uranium In Situ Recovery Projects on Mining Claims

Benjamin F. (Frank) Martin  
Deputy Chief  
Division of Solid Minerals  
Minerals and Realty Directorate  
Bureau of Land Management  
Washington  
March 2, 2010

# BLM's Role in Mineral Leasing

- BLM manages 750 million acres of Federal Minerals
- BLM managed mineral development
  - citizens may lease uranium on acquired lands or
  - citizens may stake mining claims on unpatented lands
  - only mining claims will be discussed today

# BLM Manages more than 700 million acres of Federal mineral estate (29% of the area of the U.S)



- \* Of the approximately 700 million acres of Federal mineral estate, about 166 million acres have been withdrawn from mineral entry, leasing and sale, except for valid existing rights.
- \* Salable minerals e.g. sand and gravel basically are the responsibility of each Federal surface management agency.
- \* The map depicts only Indian reservations at least 23,000 acres in size, not all Indian trust lands.

#### Categories of Lands

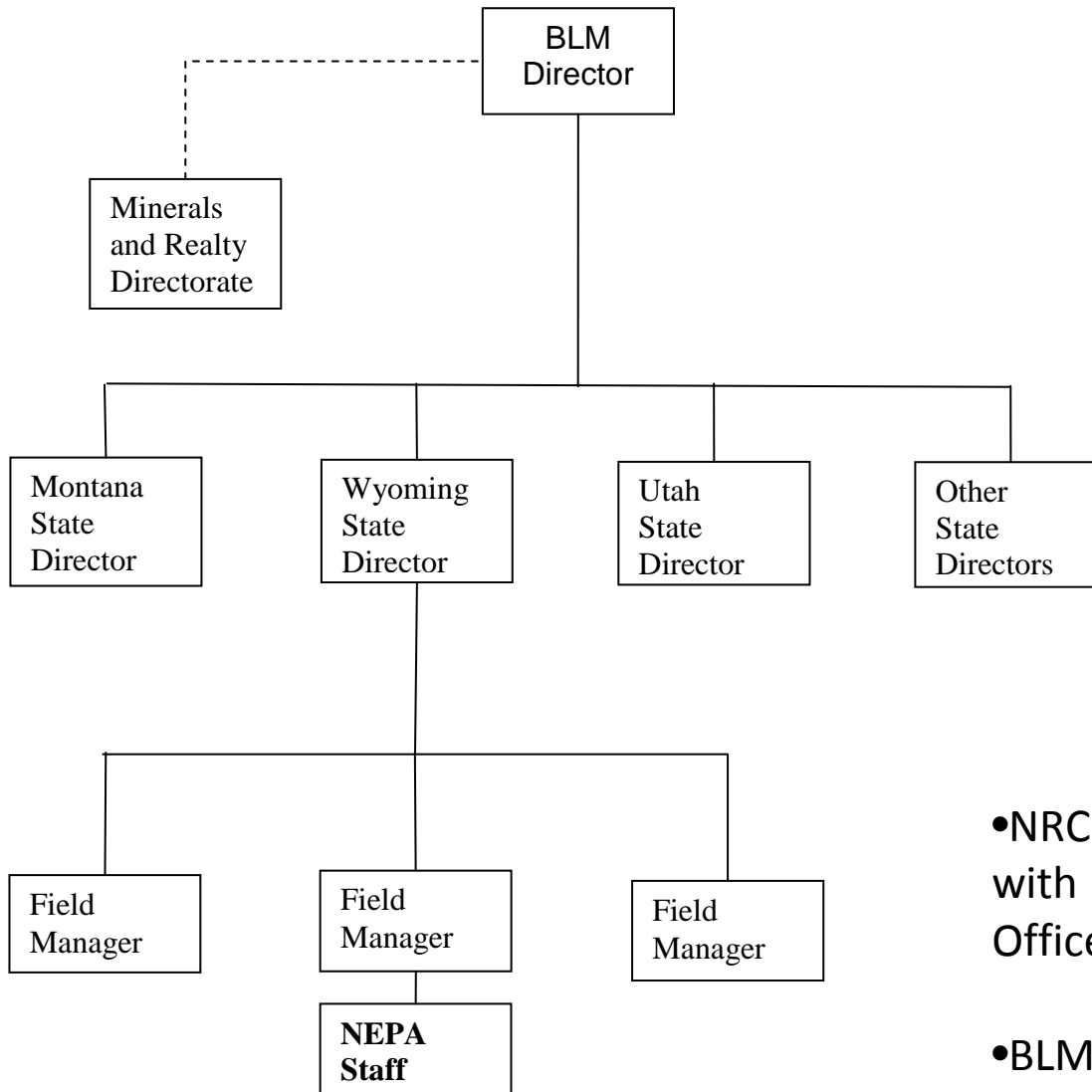
- BLM - Surface and Minerals (261 million ac)
- Other Federal Lands - Minerals (380 million ac)
- Non-Federal Surface (includes 58 million ac of Split - Estate Federal Minerals)
- Indian Trust Lands (56 million ac) except Mineral Operations for Osage Minerals
- - - BLM Administration Boundaries

BLM manages all Federal minerals onshore, regardless of Surface Management Agency

# Mining Claim Regulation – Surface Use

- **Casual use** – negligible disturbance not requiring mechanized equipment nor notification of BLM – No NEPA
- **Notice level operations** – disturb 5 acres or less – requires notification of BLM and reclamation bonding only – No NEPA
- **Plan of Operations** – Larger surface disturbances or other circumstances – BLM approval, EA/EIS and full Reclamation Bonding required

# Simplified Org Chart Showing BLM Chain of Command



- NRC NEPA staff interact directly with BLM Field Office and State Offices on specific EIS issues

- BLM WO available to assist with issues as needed.

# BLM-NRC MOU Internal Communications

- BLM distributed the MOU as a .pdf to its offices as soon as it was signed
- BLM Mining Law Quarterly Conference calls include discussions of MOU implementation
- BLM and NRC are cooperating in industry outreach through a series of meetings and workshops in Wyoming and Colorado.
- BLM is providing information at its booth at the Society of Mining Engineers meeting this week - other venues are contemplated

# The Way Forward

- BLM Field Offices will be cooperators on future NEPA documents where possible
- To take maximum advantage of cost and schedule efficiencies, Applicants must
  - understand the process
  - be responsible for timing their applications and responses to both Agencies' and the Wyoming Department of Environmental Quality's needs and requirements
- Application and information-response timing issues frequently cause unnecessary schedule slippage
- BLM also has an MOU with Wyoming DEQ which works integrally with BLM to approve mine plans

- The Bureau of Land Management is pleased that we have an MOU with the Nuclear Regulatory Commission
- We look forward to increased coordination and cooperation with the NRC in the future as we work together to deliver safe, efficient, and environmentally responsible energy to America

Thank You!