

INSERVICE INSPECTION PROGRAM PLAN MAIN STEAM SYSTEM

SHOREHAM NUCLEAR POWER PLANT

UNIT 1

TS PROC

Prepared For

e

LONG ISLAND LIGHTING COMPANY

Project Application 5536		Copy No	Assigned To		
APPROVALS					
TITLE / DEPT. - SIGNATURE - DATE					
REV NO	PREPARED BY	Project Manager	Dept. Manager	QA Manager	
0					
1					
2	<i>Albert G. Wood</i>	<i>Mark L. Seijne</i> 1-25-88	<i>John [unclear]</i> 1-25-88	<i>SL [unclear] for BGA</i> 1-25-88	
3					
4					
5					
6					
7					
8					
9					
10					
11					

CONTROLLED COPY
VALID ONLY IF THIS STAMP IS RED

8802050189 880129
PDR ADDCK 05000322
G PDR



REVISION LOG

NUCLEAR ENERGY SERVICES, INC.

DOCUMENT NO. 80A8610

PAGE 2 OF 11

REV. NO.	DATE	PAGE NO.	DESCRIPTION	APPROVAL
1	6/27/84		See CRA 4413 Revision includes editorial changes and the addition of new information	<i>Albert G. Hoell</i>
2	1/25/88	4-11	See CRA 6729	<i>Albert G. Hoell</i>

TABLE OF CONTENTS

	<u>PAGE</u>
1. INTRODUCTION	4
2. CLASSIFICATION	4
3. EXEMPTIONS	4
4. EXCEPTIONS	5
5. CALIBRATION STANDARDS	8
6. PROGRAM PLAN AND SCHEDULE	9
7. PRESSURE TESTS	10
8. ISOMETRIC FIGURES AND SKETCHES	10
9. AUGMENTED REQUIREMENTS	11

Tables

3-1 Exemptions	4
4-1 Exceptions	6
5-1 Calibration Standards	8
6-1 Section XI Examination Schedule	10
8-1 Isometric Figures	11

Appendix A

2

1. INTRODUCTION

This document presents the Inservice Inspection Requirements for the Main Steam System of the Shoreham Nuclear Power Plant.

The General Text, NES Document Number 80A8608 presents the basis for the Inservice Inspection Program and a more detailed description of the Inservice Inspection Program Plan than is contained in this document.

2. CLASSIFICATION

The Main Steam System piping and instrumentation diagrams have been reviewed and Quality Group A, B and C boundaries have been established in accordance with Regulator Guide 1.26 Rev 3. These boundaries are shown on Figures FM-29A-ISI, FM-29B-ISI and FM-69A-ISI.



3. EXEMPTIONS

The portions of the Main Steam System that are exempted from the volumetric and surface examinations of Section XI are listed in Table 3-1.

**TABLE 3-1
EXEMPTIONS**

<u>Quality Group</u>	<u>Component Description</u>	<u>Basis for Exemption</u>	<u>Boundary Diagram</u>
A	2"-SHP-5-901A-1 2"-SHP-6-901A-1 2"-SHP-14-901A-1 2"-SHP-15-901A-1 2"-SHP-16-901A-1 2"-SHP-17-901A-1 2"-SHP-22-901A-1	IWB-1220(a)	FM-29A-ISI

TABLE 3-1
EXEMPTIONS CONT.

<u>Quality Group</u>	<u>Component Description</u>	<u>Basis for Exemption</u>	<u>Boundary Diagram</u>	
A	2"-SHP-34-901A-1	IWB-1220(a)	FM-29A-ISI	
	1½"-SHP-1-901A-1			FM-69A-ISI
	2"-SHP-23-901A-1			
	2"-SHP-35-901A-1			
	1½"-SHP-11-901A-1			
	2"-SHP-24-901A-1			
	1½"-SHP-21-901A-1			
	2"-SHP-36-901A-1			
	2"-SHP-25-901A-1			
	2"-SHP-37-901A-1			
1½"-SHP-31-901A-1				
A	All piping 1 inch nominal pipe size and smaller	IWB-1220(b)	FM-29A-ISI	
B	All piping 4 inch nominal pipe size and smaller	Code Case N-408(b)(1)	FM-29A-ISI FM-29B-ISI FM-69A-ISI	
C	All piping 4 inch nominal pipe size and smaller	IWD-1220.1	FM-29A-ISI	

4. EXCEPTIONS

For those examinations in the Main Steam System that cannot be completed in accordance with the Section XI requirements a relief request will be prepared and submitted to the NRC. Those areas for which a relief request has been prepared are listed in Table 4-1.

TABLE 4-1
EXCEPTIONS

<u>Component Identification</u>	<u>Component Description</u>	<u>Fig. No.</u>	<u>Relief Request</u>	<u>Remarks</u>
B21-NS004-BW12	Pipe to Valve AOV-082D	8610-02	8610-R1	△
B21-NS001-BW15	Pipe to Valve AOV-082A	8610-01	8610-R1	

RELIEF REQUEST
8610-R1

System: Main Steam

Category: B-J

Quality Group: A

Component Description: Pipe to Valve B21*AOV-082D weld, B21-NS004-BW12 and Pipe to Valve B21*AOV-082A weld, B21-NS001-BW15

Code Requirement: Volumetric examination of 100% of circumferential and the adjoining 1 ft sections of longitudinal pipe welds.

Basis for Relief: Relief is required from the ASME Section XI examinations and the augmented examinations of NUREG-0800 (Break Exclusion Piping) on the basis of partial inaccessibility of the welds and required volume due to plant design.

The justification for requesting relief from the examination requirements is as follows:


1. Complete examinations meeting the requirements of the ASME Code Section XI will be performed on welds of similar configurations which utilized the same weld techniques, procedures and materials. The inspected welds are subject to the same operating and environmental conditions as the partially inspected welds. It is, therefore, reasonable to extend the results of the inspectable welds to the partially inspectable welds.
2. 97.5 percent coverage of each of the partially inspectable welds was achieved during the PSI. Completion of 98% of the scan is predicted for the ISI. Since the construction, operating conditions and environmental conditions on the non-inspectable portions of the weld are identical to the areas which can be inspected, the results of the inspected areas can be extended to the non-inspected area.

Alternate Testing: None.

5. CALIBRATION STANDARDS

Table 5-1 lists the Calibration Standards for ultrasonic examinations scheduled for the Main Steam System.

TABLE 5-1
Calibration Standards

<u>Title</u>	<u>Size</u>	<u>Material</u>	<u>Drawing</u>
02-160-CS	2" SCH. 160	SA-106, GR. B	80D5018 
03-080-CS	3" SCH. 80	SA-106, GR. B	80C0513
06-160-CS	6" SCH. 160	SA-106, GR. B	80C0513
10-080-CS	10" SCH. 80	SA-106, GR. B	80C0513
16-080-CS	16" SCH. 80	SA-106, GR. B	80C0519
24-080-CS	24" SCH. 80	SA-106, GR. B	80D0514
08-080-CS	8" SCH. 80	SA-106, GR. B	Later

6. PROGRAM PLAN AND SCHEDULE

The specific Main Steam ISI examination requirements are defined by the Program Plan and Schedule Tables. This Program Plan lists all the required examinations for a 10 year interval of 3 periods of 40 months each. Table 6-1 presents a summary of these Section XI required examinations scheduled by different Code categories applicable to this system.

Each weld and component is designated by a unique identification number, and then described. Also identified is the applicable examination procedure number, Code category and number, examination method, and the calibration block, if required. Any comments specific to a component are noted in the remarks column.

Examination items are divided according to the Isometric figure on which they appear and are listed following the direction of flow in the pipe. Multiple examination requirements of the same component are listed together in the schedule tables.

Augmented examinations are listed after the Section XI examinations for each period. Where the augmented requirements overlap the Section XI requirements the component is listed in both places, however, a note is added in the augmented section stating that the augmented requirements are met or exceeded by the Section XI requirements.

Quality Group C integral attachments requiring examination are listed in Table 6-1 of Document 80A8620; Inservice Inspection Program Plan, Quality Group C Systems.



TABLE 6-1
SECTION XI EXAMINATION SCHEDULE
MAIN STEAM SYSTEM

Component Description	Code Category	Examinations by Period				Total In System
		P ₁	P ₂	P ₃	Total	
Bolting < 2"	B-G-2	7	7	7	21	21
Piping welds (circumferential)	B-J	11	11	10	32	123
Intersecting Long-Seams	B-J	8	4	4	16	-
Integral Attachments	B-K-1	1	1	2	4	4
Valve Bodies	B-M-2	2**	0	0	2	21
System Leakage Test	B-P	*	*	*	-	-
System Hydro Test	B-P	0	0	1	1	-
Integral Attachments	C-C	9	8	8	25	25
Piping Welds (circumferential)***	C-F-2	4	5	4	13	167
System Leakage Test	C-H	1	1	1	3	-
System Hydro Test	C-H	0	0	1	1	-
Integral Attachments	D-A	-	-	-	77	77



- * Leakage Test is required at each refueling outage.
- ** Deferral of these examinations to the end of the interval is permissible.
- *** Weld selection in accordance with Code Case N-408.

7. PRESSURE TESTS

In accordance with Section XI all Quality Group A pressure retaining components are to receive a leakage test in accordance with IWB-5221 every refueling outage, all Quality Group B and C pressure retaining components are to receive a leakage test in accordance with IWC-5221 every period (40 months), and Quality Group A, B & C pressure retaining components are to receive a hydrostatic test in accordance with IWB-5222, IWC-5222 and IWD-5223 respectively at or near the end of the interval. The portions of the Main Steam System requiring these pressure tests are those marked Quality Group A, B & C including lines 1 inch and less on boundary diagram FM-29-ISI, FM-29B-ISI and FM-69A-ISI.

8. ISOMETRIC FIGURES AND SKETCHES

The piping isometric figures listed in Table 8-1 show the identification and location of areas for the Main Steam System requiring examination. Sketches may also be

included that illustrate or locate areas of components requiring identification for examination. Boundary Diagrams are provided to show the Quality Group boundaries and also to define those areas requiring pressure testing under Code Category B-P.

TABLE 8-1
Isometric Figures

8610-1	Rev. 1
8610-2	Rev. 1
8610-3	Rev. 0
8610-4	Rev. 1
8610-5	Rev. 1
8610-6	Rev. 1
8610-7	Rev. 1
8610-8	Rev. 0
8610-9	Rev. 0
8610-10	Rev. 0
8610-11	Rev. 0
8610-12	Rev. 0
8610-13	Rev. 0

Boundary Diagrams

FM-29A-ISI	Rev. 1
FM-29B-ISI	Rev. 0
FM-69A-ISI	Rev. 0



9. AUGMENTED REQUIREMENTS

Following are the augmented requirements that apply to the Main Steam System.

9.1 NUREG-0800 (Break Exclusion Piping)

All welds that fall between the "Break Exclusion Boundary" and the penetration have been scheduled evenly among the 3 periods. These welds appear under the headings period 1A, 2A, and 3A. Where a weld has already been scheduled for examination because of Section XI requirements, the weld is listed again with a reference to the Section XI listing.

APPENDIX A

APPENDIX A

Table of Contents

	<u>No. of Pages</u>
1. Program Plan Work Schedule Tables	
Period 1	9
Period 1A (Break Exclusion)	14
Period 2	9
Period 2A (Break Exclusion)	15
Period 3	8
Period 3A (Break Exclusion)	14
2. Isometric Figures	
8610-1	
8610-2	
8610-3	
8610-4	
8610-5	
8610-6	
8610-7	
8610-8	
8610-9	
8610-9	
8610-10	
8610-11	
8610-12	
8610-13	
3. Boundary Diagrams	
FM-29A-ISI	
FM-29B-ISI	
FM-69A-ISI	

The following notes apply to the Program Plan and Schedule Tables.

Note 1 - This examination has been scheduled for the first period, however the examination may be deferred to a time later in the interval when the component will be disassembled.

Note 2 - This weld is scheduled for a Section XI examination which meets or exceeds the augmented requirement and is listed here only for continuity.

PERIOD 1

SYSTEM: MAIN STEAM
 NES ISO NUMBER 8610-01

SHOREHAM NUCLEAR POWER STATION
 ISI PROGRAM PLAN AND SCHEDULE
 80A8610 REV. 2

PERIOD 1
 PAGE 1 OF 9

COMPONENT IDENTIFICATION	SIZE (IN)	COMPONENT DESCRIPTION	PROC. NO.	CAL. BLOCK	CODE CAT.	CODE NO.	CODE EXAM METH	REMARKS
B21-RV-092L-b	<2	VALVE RV-092L BOLTING	80A3133	N/A	B-G-2	B7.70	VT-1	
B21-RV-092E-b	<2	VALVE RV-092E BOLTING	80A3133	N/A	B-G-2	B7.70	VT-1	
B21-RV-092D-b	<2	VALVE RV-092D BOLTING	80A3133	N/A	B-G-2	B7.70	VT-1	
B21-RV-092C-b	<2	VALVE RV-092C BOLTING	80A3133	N/A	B-G-2	B7.70	VT-1	
B21-AOV-081B-b	<2	VALVE AOV-081B BOLTING	80A3133	N/A	B-G-2	B7.70	VT-1	
B21-AOV-082B-b	<2	VALVE AOV-082B BOLTING	80A3133	N/A	B-G-2	B7.70	VT-1	
B21-B1-A	24	PIPE TO ELBOW	80A3131 80A3132	24-080-CS	B-J	B9.11	UT PT	

SYSTEM:MAIN STEAM
NES ISO NUMBER 8610-01

SHOREHAM NUCLEAR POWER STATION
ISI PROGRAM PLAN AND SCHEDULE
80A8610 REV. 2

PERIOD 1
PAGE 2 OF 9

COMPONENT IDENTIFICATION	SIZE (IN)	COMPONENT DESCRIPTION	PROC. NO.	CAL. BLOCK	CODE CAT.	CODE NO.	CODE EXAM METH	REMARKS
B21-B1-A-D1	24	ELBOW LONG SEAM SHORT SIDE	80A3131 80A3132	24-080-CS	B-J	B9.12	UT PT	
B21-B1-A-D2	24	ELBOW LONG SEAM LONG SIDE	80A3131 80A3132	24-080-CS	B-J	B9.12	UT PT	
B21-NS002-BW22	24	PIPE TO ELBOW	80A3131 80A3132	24-080-CS	B-J	B9.11	UT PT	
B21-NS002-BW22-D1	24	ELBOW LONG SEAM SHORT SIDE	80A3131 80A3132	24-080-CS	B-J	B9.12	UT PT	
B21-NS002-BW22-D2	24	ELBOW LONG SEAM LONG SIDE	80A3131 80A3132	24-080-CS	B-J	B9.12	UT PT	
B21-NS002-BW04-U1	24	ELBOW LONG SEAM SHORT SIDE	80A3131 80A3132	24-080-CS	B-J	B9.12	UT PT	
B21-NS002-BW04-U2	24	ELBOW LONG SEAM LONG SIDE	80A3131 80A3132	24-080-CS	B-J	B9.12	UT PT	

SYSTEM: MAIN STEAM
NES ISO NUMBER 8610-01

SHOREHAM NUCLEAR POWER STATION
ISI PROGRAM PLAN AND SCHEDULE
80A8610 REV. 2

PERIOD 1
PAGE 3 OF 9

COMPONENT IDENTIFICATION	SIZE (IN)	COMPONENT DESCRIPTION	PROC. NO.	CAL. BLOCK	CODE CAT.	CODE NO.	CODE EXAM METH	REMARKS
B21-NS002-BW04	24	ELBOW TO PIPE	80A3131 80A3132	24-080-CS	B-J	B9.11	UT PT	
B21-NS002-BW06	24	PIPE TO VALVE AOV-081B	80A3131 80A3132	24-080-CS	B-J	B9.11	UT PT	
B21-A5-C-U1	24	ELBOW LONG SEAM SHORT SIDE	80A3131 80A3132	24-080-CS	B-J	B9.12	UT PT	
B21-A5-C-U2	24	ELBOW LONG SEAM LONG SIDE	80A3131 80A3132	24-080-CS	B-J	B9.12	UT PT	
B21-A5-C	24	ELBOW TO PIPE	80A3131 80A3132	24-080-CS	B-J	B9.11	UT PT	
B21-A5-D	10	S.O.L. BRANCH CONNECTION	80A3131 80A3132	24-080-CS	B-J	B9.31	UT PT	
B21-HB1	24	INTEGRALLY WELDED ATTACHMENT	80A3132	N/A	B-K-1	B10.10	PT	

SYSTEM:MAIN STEAM
NES ISO NUMBER 8610-01

SHOREHAM NUCLEAR POWER STATION
ISI PROGRAM PLAN AND SCHEDULE
80A8610 REV. 2

PERIOD 1
PAGE 4 OF 9

COMPONENT IDENTIFICATION	SIZE (IN)	COMPONENT DESCRIPTION	PROC. NO.	CAL. BLOCK	CODE CAT.	CODE NO.	CODE EXAM METH	REMARKS
B21-RV-092A	24	VALVE RV-092A INTERNAL	80A3133	N/A	B-M-2	B12.50	VT-3	SEE NOTE 1
B21-AOV-082A	24	VALVE AOV-082A INTERNAL	80A3133	N/A	B-M-2	B12.50	VT-3	SEE NOTE 1

SYSTEM:MAIN STEAM
NES ISO NUMBER 8610-03

SHOREHAM NUCLEAR POWER STATION
ISI PROGRAM PLAN AND SCHEDULE
80A8610 REV. 2

PERIOD 1
PAGE 5 OF 9

COMPONENT IDENTIFICATION	SIZE (IN)	COMPONENT DESCRIPTION	PROC. NO.	CAL. BLOCK	CODE CAT.	CODE NO.	CODE EXAM METH	REMARKS
B21-B3-L	6	SWEEP-O-LET BRANCH CONNECTION	80A3131 80A3132	24-080-CS	B-J	B9.31	UT PT	
B21-B3-M	6	SWEEP-O-LET TO PIPE	80A3131 80A3132	06-160-CS	B-J	B9.11	UT PT	
B21-B3-N	6	PIPE TO FLANGE	80A3131 80A3132	06-160-CS	B-J	B9.11	UT PT	

SYSTEM:MAIN STEAM
NES ISO NUMBER 8610-04

SHOREHAM NUCLEAR POWER STATION
ISI PROGRAM PLAN AND SCHEDULE
80A8610 REV. 2

PERIOD 1
PAGE 6 OF 9

COMPONENT IDENTIFICATION	SIZE (IN)	COMPONENT DESCRIPTION	PROC. NO.	CAL. BLOCK	CODE CAT.	CODE NO.	CODE EXAM METH	REMARKS
B21-MOV-031-b	<2	VALVE MOV-031 BOLTING	80A3133	N/A	B-G-2	B7.70	VT-1	
B21-4202-B	3	3X2 REDUCER TO PIPE	80A3132	N/A	B-J	B9.21	PT	
B21-4202-H	3	PIPE TO TEE	80A3132	N/A	B-J	B9.21	PT	

SYSTEM: MAIN STEAM
NES ISO NUMBER 8610-05

SHOREHAM NUCLEAR POWER STATION
ISI PROGRAM PLAN AND SCHEDULE
80A8610 REV. 2

PERIOD 1
PAGE 7 OF 9

COMPONENT IDENTIFICATION	SIZE (IN)	COMPONENT DESCRIPTION	PROC. NO.	CAL. BLOCK	CODE CAT.	CODE NO.	CODE EXAM METH	REMARKS
N11-PSSH-165	24	INTEGRALLY WELDED ATTACHMENT	80A3132	N/A	C-C	C3.20	PT	
N11-PSSP-840	24	INTEGRALLY WELDED ATTACHMENT	80A3132	N/A	C-C	C3.20	PT	
N11-PSR-163	24	INTEGRALLY WELDED ATTACHMENT	80A3132	N/A	C-C	C3.20	PT	
N11-PSA-119	24	INTEGRALLY WELDED ATTACHMENT	80A3132	N/A	C-C	C3.20	PT	
N11-PSSP-803	24	INTEGRALLY WELDED ATTACHMENT	80A3132	N/A	C-C	C3.20	PT	
N11-PSSP-808	24	INTEGRALLY WELDED ATTACHMENT	80A3132	N/A	C-C	C3.20	PT	
N11-PSSP-809	24	INTEGRALLY WELDED ATTACHMENT	80A3132	N/A	C-C	C3.20	PT	

SYSTEM: MAIN STEAM
 NES ISO NUMBER 8610-05

SHOREHAM NUCLEAR POWER STATION
 ISI PROGRAM PLAN AND SCHEDULE
 80A8610 REV. 2


PERIOD 1
 PAGE 8 OF 9

COMPONENT IDENTIFICATION	SIZE (IN)	COMPONENT DESCRIPTION	PROC. NO.	CAL. BLOCK	CODE CAT.	CODE NO.	CODE EXAM METH	REMARKS
N11-PSSH-180	24	INTEGRALLY WELDED ATTACHMENT	80A3132	N/A	C-C	C3.20	PT	
N11-PSSP-838	24	INTRGRALLY WELDED ATTACHMENT	80A3132	N/A	C-C	C3.20	PT	
N11-NS001-BW16	24	VALVE AOV-082A TO PIPE	80A3131 80A3132	24-080-CS	C-F-2	C5.51	UT PT	△ 2
N11-568-A	24	PIPE TO ELBOW	80A3131 80A3132	24-080-CS	C-F-2	C5.51	UT PT	

SYSTEM:MAIN STEAM
NES ISO NUMBER 8610-07

SHOREHAM NUCLEAR POWER STATION
ISI PROGRAM PLAN AND SCHEDULE
80A8610 REV. 2

PERIOD 1
PAGE 9 OF 9

COMPONENT IDENTIFICATION	SIZE (IN)	COMPONENT DESCRIPTION	PROC. NO.	CAL. BLOCK	CODE CAT.	CODE NO.	CODE EXAM METH	REMARKS
N11-1865C	8	ELBOW TO PIPE	80A3131 80A3132	08-080-CS	C-F-2	C5.51	UT PT	
N11-1863A	10	ELBOW TO PIPE	80A3131 80A3132	10-080-CS	C-F-2	C5.51	UT PT	

PERIOD 1A
(BREAK EXCLUSION)

SYSTEM:MAIN STEAM
NES ISO NUMBER 8610-01

SHOREHAM NUCLEAR POWER STATION
ISI PROGRAM PLAN AND SCHEDULE
8028610 REV. 2

PERIOD 1A
PAGE 1 OF 14

COMPONENT IDENTIFICATION	SIZE (IN)	COMPONENT DESCRIPTION	PROC. NO.	CAL. BLOCK	CODE CAT.	CODE NO.	CODE EXAM METH	REMARKS
B21-NS001-BW15	24	PIPE TO VALVE AOV-082A	80A3131	24-080-CS	B-J	B9.11	UT	SEE R.R.8610-R1

SYSTEM:MAIN STEAM
NES ISO NUMBER 8610-04

SHOREHAM NUCLEAR POWER STATION
ISI PROGRAM PLAN AND SCHEDULE
80A8610 REV. 2

PERIOD 1A
PAGE 2 OF 14

COMPONENT IDENTIFICATION	SIZE (IN)	COMPONENT DESCRIPTION	PROC. NO.	CAL. BLOCK	CODE CAT.	CODE NO.	CODE EXAM METH	REMARKS
B21-2237-D	3	PIPE TO ELBOW	80A3131	03-080-CS	B-J	B9.21	UT	
B21-2237-E	3	ELBOW TO PIPE	80A3131	03-080-CS	B-J	B9.21	UT	

SYSTEM:MAIN STEAM
NES ISO NUMBER 8610-05

SHOREHAM NUCLEAR POWER STATION
ISI PROGRAM PLAN AND SCHEDULE
80A8610 REV. 2

PERIOD 1A
PAGE 3 OF 14

COMPONENT IDENTIFICATION	SIZE (IN)	COMPONENT DESCRIPTION	PROC. NO.	CAL. BLOCK	CODE CAT.	CODE NO.	CODE EXAM METH	REMARKS
N11-NS001-BW16	24	VALVE AOV-082A TO PIPE	80A3131	24-080-CS	C-F-2	C5.51	UT	SEE NOTE 2
N11-558-H	2	S.O.L. BRANCH CONNECTION	80A3132	N/A	N/A	N/A	PT	
N11-558-G	1.25	S.O.L BRANCH CONNECTION	80A3132	N/A	N/A	N/A	PT	

SYSTEM:MAIN STEAM
NES ISO NUMBER 8610-08

SHOREHAM NUCLEAR POWER STATION
ISI PROGRAM PLAN AND SCHEDULE
80A8610 REV. 2

PERIOD 1A
PAGE 4 OF 14

COMPONENT IDENTIFICATION	SIZE (IN)	COMPONENT DESCRIPTION	PROC. NO.	CAL. BLOCK	CODE CAT.	CODE NO.	CODE EXAM METH	REMARKS
B21-P2574-FWA	2	PIPE TO COUPLING	80A3132	N/A	N/A	N/A	PT	
B21-P2574-FWK	2	COUPLING TO PIPE	80A3132	N/A	N/A	N/A	PT	
B21-P2574-B	2	PIPE TO TEE	80A3132	N/A	N/A	N/A	PT	
B21-P2574-C	2	TEE TO PIPE	80A3132	N/A	N/A	N/A	PT	
B21-P2574-FWD	2	PIPE TO VALVE MOV-063	80A3132	N/A	N/A	N/A	PT	
B21-P2574-FWE	2	TEE TO PIPE	80A3132	N/A	N/A	N/A	PT	
B21-P2574-FWH	2	PIPE TO ELBOW	80A3132	N/A	N/A	N/A	PT	

SYSTEM:MAIN STEAM
NES ISO NUMBER 8610-08

SHOREHAM NUCLEAR POWER STATION
ISI PROGRAM PLAN AND SCHEDULE
80A8610 REV. 2

PERIOD 1A
PAGE 5 OF 14

COMPONENT IDENTIFICATION	SIZE (IN)	COMPONENT DESCRIPTION	PROC. NO.	CAL. BLOCK	CODE CAT.	CODE NO.	CODE EXAM METH	REMARKS
B21-P2574-FWL	2	ELBOW TO ORIFICE	80A3132	N/A	N/A	N/A	PT	

SYSTEM:MAIN STEAM
NES ISO NUMBER 8610-09

SHOREHAM NUCLEAR POWER STATION
ISI PROGRAM PLAN AND SCHEDULE
80A8610 REV. 2

PERIOD 1A
PAGE 6 OF 14

COMPONENT IDENTIFICATION	SIZE (IN)	COMPONENT DESCRIPTION	PROC. NO.	CAL. BLOCK	CODE CAT.	CODE NO.	CODE EXAM METH	REMARKS
E32-P6001-E	1.5	PIPE TO TEE	80A3132	N/A	N/A	N/A	PT	
E32-P6073-A	1.5	TEE TO 1.5X1 RED	80A3132	N/A	N/A	N/A	PT	
E32-P6001-D	1.5	TEE TO PIPE	80A3132	N/A	N/A	N/A	PT	
E32-P6001-C	1.5	PIPE TO TEE	80A3132	N/A	N/A	N/A	PT	
E32-P6001-FW1	1.5	TEE TO 1.5X1 RED	80A3132	N/A	N/A	N/A	PT	
E32-P6001-B	1.5	TEE TO PIPE	80A3132	N/A	N/A	N/A	PT	
E32-P6001-FWS	1.5	PIPE TO VALVE MOV-021D	80A3132	N/A	N/A	N/A	PT	

SYSTEM:MAIN STEAM
NES ISO NUMBER 8610-10

SHOREHAM NUCLEAR POWER STATION
ISI PROGRAM PLAN AND SCHEDULE
80A8610 REV. 2

PERIOD 1A
PAGE 7 OF 14

COMPONENT IDENTIFICATION	SIZE (IN)	COMPONENT DESCRIPTION	PROC. NO.	CAL. BLOCK	CODE CAT.	CODE NO.	CODE EXAM METH	REMARKS
B21-4210-J	2	BOSS BRANCH CONNECTION	80A3132	N/A	N/A	N/A	PT	
B21-4210-K	3	PIPE TO 3X2 RED	80A3131	03-080-CS	N/A	N/A	UT	
B21-P2598-FWC	2	BOSS TO PIPE	80A3132	N/A	N/A	N/A	PT	
B21-P2598-C	2	PIPE TO ELBOW	80A3132	N/A	N/A	N/A	PT	
B21-P2598-FWI	2	ELBOW TO PIPE	80A3132	N/A	N/A	N/A	PT	
B21-P2598-FWJ	2	PIPE TO ELBOW	80A3132	N/A	N/A	N/A	PT	
B21-P2598-FWG	2	ELBOW TO PIPE	80A3132	N/A	N/A	N/A	PT	

SYSTEM: MAIN STEAM
 NES ISO NUMBER 8610-10

SHOREHAM NUCLEAR POWER STATION
 ISI PROGRAM PLAN AND SCHEDULE
 80A8610 REV. 2

PERIOD 1A
 PAGE 8 OF 14

COMPONENT IDENTIFICATION	SIZE (IN)	COMPONENT DESCRIPTION	PROC. NO.	CAL. BLOCK	CODE CAT.	CODE NO.	CODE EXAM METH	REMARKS
B21-P2598-FWF	2	PIPE TO ELBOW	80A3132	N/A	N/A	N/A	PT	
B21-P2599-FWF	2	3X2 RED TO PIPE	80A3131	02-160-CS	N/A	N/A	UT	△ 2
B21-P2599-FWK	2	PIPE TO ELBOW	80A3132	N/A	N/A	N/A	PT	
B21-P2599-FWJ	2	ELBOW TO PIPE	80A3132	N/A	N/A	N/A	PT	
B21-P2599-FWI	2	PIPE TO ELBOW	80A3132	N/A	N/A	N/A	PT	
B21-P2599-FWH	2	ELBOW TO PIPE	80A3132	N/A	N/A	N/A	PT	
B21-P2599-E	2	PIPE TO ELBOW	80A3132	N/A	N/A	N/A	PT	

SYSTEM: MAIN STEAM
NES ISO NUMBER 8610-10

SHOREHAM NUCLEAR POWER STATION
ISI PROGRAM PLAN AND SCHEDULE
80A8610 REV. 2

PERIOD 1A
PAGE 9 OF 14

COMPONENT IDENTIFICATION	SIZE (IN)	COMPONENT DESCRIPTION	PROC. NO.	CAL. BLOCK	CODE CAT.	CODE NO.	CODE EXAM METH	REMARKS
B21-P2599-FWG	2	ELBOW TO PIPE	80A3132	N/A	N/A	N/A	PT	
B21-P2599-C	2	PIPE TO ELBOW	80A3132	N/A	N/A	N/A	PT	
B21-P2599-FWL	2	ELBOW TO PIPE	80A3132	N/A	N/A	N/A	PT	
B21-P2599-FWA	2	PIPE TO S.O.L.	80A3132	N/A	N/A	N/A	PT	

SYSTEM:MAIN STEAM
NES ISO NUMBER 8610-11

SHOREHAM NUCLEAR POWER STATION
ISI PROGRAM PLAN AND SCHEDULE
80A8610 REV. 2

PERIOD 1A
PAGE 10 OF 14

COMPONENT IDENTIFICATION	SIZE (IN)	COMPONENT DESCRIPTION	PROC. NO.	CAL. BLOCK	CODE CAT.	CODE NO.	CODE EXAM METH	REMARKS
E32-P6030-D	2	PIPE TO TEE	80A3132	N/A	N/A	N/A	PT	
E32-P6030-E	2	TEE TO PIPE	80A3132	N/A	N/A	N/A	PT	
E32-P6030-F	2	PIPE TO ELBOW	80A3132	N/A	N/A	N/A	PT	
E32-P6030-G	2	ELBOW TO PIPE	80A3132	N/A	N/A	N/A	PT	
E32-P6030-FWH	2	PIPE TO VALVE MOV-026	80A3132	N/A	N/A	N/A	PT	

SYSTEM:MAIN STEAM
NES ISO NUMBER 8610-12

SHOREHAM NUCLEAR POWER STATION
ISI PROGRAM PLAN AND SCHEDULE
80A8610 REV. 2

PERIOD 1A
PAGE 11 OF 14

COMPONENT IDENTIFICATION	SIZE (IN)	COMPONENT DESCRIPTION	PROC. NO.	CAL. BLOCK	CODE CAT.	CODE NO.	CODE EXAM METH	REMARKS
B21-P2572-FWA	2	PIPE TO COUPLING	80A3132	N/A	B-J	B9.40	PT	
B21-P2572-FWK	2	COUPLING TO PIPE	80A3132	N/A	B-J	B9.40	PT	
B21-P2572-B	2	PIPE TO TEE	80A3132	N/A	B-J	B9.40	PT	
B21-P2572-C	2	TEE TO PIPE	80A3132	N/A	B-J	B9.40	PT	
B21-P2572-FWD	2	PIPE TO VALVE MOV-061	80A3132	N/A	B-J	B9.40	PT	
B21-P2572-FWE	2	TEE TO PIPE	80A3132	N/A	B-J	B9.40	PT	
B21-P2572-F	2	PIPE TO TEE	80A3132	N/A	B-J	B9.40	PT	

SYSTEM:MAIN STEAM
NES ISO NUMBER 8610-12

SHOREHAM NUCLEAR POWER STATION
ISI PROGRAM PLAN AND SCHEDULE
80A8610 REV. 2

PERIOD 1A
PAGE 12 OF 14

COMPONENT IDENTIFICATION	SIZE (IN)	COMPONENT DESCRIPTION	PROC. NO.	CAL. BLOCK	CODE CAT.	CODE NO.	CODE EXAM METH	REMARKS
B21-P2572-J	2	TEE TO 2X1.5 RED.	80A3132	N/A	B-J	B9.40	PT	
B21-P2572-G	2	TEE TO PIPE	80A3132	N/A	B-J	B9.40	PT	

SYSTEM: MAIN STEAM
NES ISO NUMBER 8610-13

SHOREHAM NUCLEAR POWER STATION
ISI PROGRAM PLAN AND SCHEDULE
80A8610 REV. 2

PERIOD 1A
PAGE 13 OF 14

COMPONENT IDENTIFICATION	SIZE (IN)	COMPONENT DESCRIPTION	PROC. NO.	CAL. BLOCK	CODE CAT.	CODE NO.	CODE EXAM METH	REMARKS
E32-P6003-FWDD	1.5	ELBOW TO PIPE	80A3132	N/A	B-J	B9.40	PT	
E32-P6003-D	1.5	PIPE TO TEE	80A3132	N/A	B-J	B9.40	PT	
E32-P6003-FWM	1.5	TEE TO 1.5X.75 RED	80A3132	N/A	B-J	B9.40	PT	
E32-P6003-FWE	1.5	TEE TO PIPE	80A3132	N/A	B-J	B9.40	PT	
E32-P6003-F	1.5	PIPE TO TEE	80A3132	N/A	B-J	B9.40	PT	
E32-P6075-A	1.5	TEE TO 1.5X1 RED	80A3132	N/A	B-J	B9.40	PT	
E32-P6003-G	1.5	TEE TO PIPE	80A3132	N/A	B-J	B9.40	PT	

SYSTEM: MAIN STEAM
NES ISO NUMBER 8610-13

SHOREHAM NUCLEAR POWER STATION
ISI PROGRAM PLAN AND SCHEDULE
80A8610 REV. 2

PERIOD 1A
PAGE 14 OF 14

COMPONENT IDENTIFICATION	SIZE (IN)	COMPONENT DESCRIPTION	PROC. NO.	CAL. BLOCK	CODE CAT.	CODE NO.	CODE EXAM METH	REMARKS
E32-P6003-H	1.5	PIPE TO ELBOW	80A3132	N/A	B-J	B9.40	PT	
E32-P6003-I	1.5	ELBOW TO PIPE	80A3132	N/A	B-J	B9.40	PT	
E32-P6003-FWEE	1.5	PIPE TO 1.5 COUPLING	80A3132	N/A	B-J	B9.40	PT	
E32-P6003-FWFF	1.5	1.5 COUPLING TO PIPE	80A3132	N/A	B-J	B9.40	PT	
E32-P6003-FWL	1.5	PIPE TO VALVE MOV-021B	80A3132	N/A	B-J	B9.40	PT	

PERIOD 2

SYSTEM: MAIN STEAM
MES ISO NUMBER 6810-1

SHOREHAM NUCLEAR POWER STATION
ISI PROGRAM PLAN AND SCHEDULE
80A8610 REV. 2

PERIOD 2
PAGE 1 OF 9

COMPONENT IDENTIFICATION	SIZE (IN)	COMPONENT DESCRIPTION	PROC. NO.	CAL. BLOCK	CODE CAT.	CODE NO.	CODE EXAM METH	REMARKS
B21-HA1	24	INTEGRALLY WELDED ATTACHMENT	80A3132	N/A	B-K-1	B10.10	PT	

SYSTEM: MAIN STEAM
 NES ISO NUMBER 8610-01

SHOREHAM NUCLEAR POWER STATION
 ISI PROGRAM PLAN AND SCHEDULE
 80A8610 REV. 2

PERIOD 2
 PAGE 2 OF 9

COMPONENT IDENTIFICATION	SIZE (IN)	COMPONENT DESCRIPTION	PROC. NO.	CAL. BLOCK	CODE CAT.	CODE NO.	CODE EXAM METH	REMARKS
B21-RV-092B-b	<2	VALVE RV-092B BOLTING	80A3133	N/A	B-G-2	B7.70	VT-1	
B21-RV-092A-b	<2	VALVE RV-092A BOLTING	80A3133	N/A	B-G-2	B7.70	VT-1	
B21-AOV-081A-b	<2	VALVE AOV-081A BOLTING	80A3133	N/A	B-G-2	B7.70	VT-1	
B21-AOV-082A-b	<2	VALVE AOV-082A BOLTING	80A3133	N/A	B-G-2	B7.70	VT-1	
B21-NS001-BW01	24	NOZZLE N3A TO PIPE	80A3131 80A3132	24-080-CS	B-J	B9.11	UT PT	
B21-A2-AA	24	PIPE TO PIPE	80A3131 80A3132	24-080-CS	B-J	B9.11	UT PT	
B21-A3-H	3	W.O.L. BRANCH CONNECTION	80A3132	N/A	B-J	B9.32	PT	

SYSTEM:MAIN STEAM
 NES ISO NUMBER 8610-02

SHOREHAM NUCLEAR POWER STATION
 ISI PROGRAM PLAN AND SCHEDULE
 80A8610 REV. 2

PERIOD 2
 PAGE 3 OF 9

COMPONENT IDENTIFICATION	SIZE (IN)	COMPONENT DESCRIPTION	PROC. NO.	CAL. BLOCK	CODE CAT.	CODE NO.	CODE EXAM METH	REMARKS
B21-AOV-081D-b	<2	VALVE AOV-081D BOLTING	80A3133	N/A	B-G-2	B7.70	VT-1	
B21-AOV-082D-b	<2	VALVE AOV-082D BOLTING	80A3133	N/A	B-G-2	B7.70	VT-1	
B21-D3-H	24	PIPE TO ELBOW	80A3131 80A3132	24-080-CS	B-J	B9.11	UT PT	
B21-D3-H-D1	24	ELBOW LONG SEAM SHORT SIDE	80A3131 80A3132	24-080-CS	B-J	B9.12	UT PT	
B21-D3-H-D2	24	ELBOW LONG SEAM LONG SIDE	80A3131 80A3132	24-080-CS	B-J	B9.12	UT PT	
B21-NS004-BW05	24	PIPE TO ELBOW	80A3131 80A3132	24-080-CS	B-J	B9.11	UT PT	
B21-NS004-BW05-D1	24	ELBOW LONG SEAM SHORT SIDE	80A3131 80A3132	24-080-CS	B-J	B9.12	UT PT	

SYSTEM:MAIN STEAM
NES ISO NUMBER 8610-02

SHOREHAM NUCLEAR POWER STATION
ISI PROGRAM PLAN AND SCHEDULE
80A8610 REV. 2

PERIOD 2
PAGE 4 OF 9

COMPONENT IDENTIFICATION	SIZE (IN)	COMPONENT DESCRIPTION	PROC. NO.	CAL. BLOCK	CODE CAT.	CODE NO.	CODE EXAM METH	REMARKS
B21-NS004-BW05-D2	24	ELBOW LONG SEAM LONG SIDE	80A3131 80A3132	24-080-CS	B-J	B9.12	UT PT	
B21-NS004-BW12	24	PIPE TO VALVE AOV-082D	80A3131 80A3132	24-080-CS	B-J	B9.11	UT PT	SEE R.R.8610-R1

SYSTEM:MAIN STEAM
NES ISO NUMBER 8610-03

SHOREHAM NUCLEAR POWER STATION
ISI PROGRAM PLAN AND SCHEDULE
80A8610 REV. 2

PERIOD 2
PAGE 5 OF 9

COMPONENT IDENTIFICATION	SIZE (IN)	COMPONENT DESCRIPTION	PROC. NO.	CAL. BLOCK	CODE CAT.	CODE NO.	CODE EXAM METH	REMARKS
B21-C3-B	6	SWEEP-O-LET BRANCH CONNECTION	80A3131 80A3132	24-080-CS	B-J	B9.21	UT PT	
B21-C3-C	6	SWEEP-O-LET TO PIPE	80A3131 80A3132	06-160-CS	B-J	B9.11	UT PT	
B21-C3-D	6	PIPE TO FLANGE	80A3131 80A3132	06-160-CS	B-J	B9.11	UT PT	

SYSTEM:MAIN STEAM
NES ISO NUMBER 8610-04

SHOREHAM NUCLEAR POWER STATION
ISI PROGRAM PLAN AND SCHEDULE
80A8610 REV. 2


PERIOD 2
PAGE 6 OF 9

COMPONENT IDENTIFICATION	SIZE (IN)	COMPONENT DESCRIPTION	PROC. NO.	CAL. BLOCK	CODE CAT.	CODE NO.	CODE EXAM METH	REMARKS
B21-MOV-032-b	<2	VALVE MOV-032 BOLTING	80A3133	N/A	B-G-2	B7.70	VT-1	
B21-4202-X	3	3X3X2 BW TEE TO 3"PIPE	80A3132	N/A	B-J	B9.21	PT	
B21-4202-P	3	ELBOW TO PIPE	80A3132	N/A	B-J	B9.21	PT	

SYSTEM: MAIN STEAM
 NES ISO NUMBER 8610-05

SHOREHAM NUCLEAR POWER STATION
 ISI PROGRAM PLAN AND SCHEDULE
 80A8610 REV. 2

PERIOD 2
 PAGE 7 OF 9

COMPONENT IDENTIFICATION	SIZE (IN)	COMPONENT DESCRIPTION	PROC. NO.	CAL. BLOCK	CODE CAT.	CODE NO.	CODE EXAM METH	REMARKS
N11-PSR-178	24	INTEGRALLY WELDED ATTACHMENT	80A3132	N/A	C-C	C3.20	PT	
N11-PSA-118	24	INTEGRALLY WELDED ATTACHMENT	80A3132	N/A	C-C	C3.20	PT	
N11-PSSP-806	24	INTEGRALLY WELDED ATTACHMENT	80A3132	N/A	C-C	C3.20	PT	
N11-C-7001A-L	24	PIPE TO BALANCE HEADER	80A3131 80A3132	24-080-CS	C-F-2	C5.51	UT PT	
N11-IC-143-FW7	24	ELBOW TO PIPE	80A3131 80A3132	24-080-CS	C-F-2	C5.51	UT PT	

SYSTEM:MAIN STEAM
NES ISO NUMBER 8610-06

SHOREHAM NUCLEAR POWER STATION
ISI PROGRAM PLAN AND SCHEDULE
80A8610 REV. 2

PERIOD 2
PAGE 8 OF 9

COMPONENT IDENTIFICATION	SIZE (IN)	COMPONENT DESCRIPTION	PROC. NO.	CAL. BLOCK	CODE CAT.	CODE NO.	CODE EXAM METH	REMARKS
N11-PSSH-184	24	INTEGRALLY WELDED ATTACHMENT	80A3132	N/A	C-C	C3.20	PT	
N11-PSSP-842	24	INTEGRALLY WELDED ATTACHMENT	80A3132	N/A	C-C	C3.20	PT	
N11-PSA-116	24	INTEGRALLY WELDED ATTACHMENT	80A3132	N/A	C-C	C3.20	PT	
N11-PSSP-804	24	INTEGRALLY WELDED ATTACHMENT	80A3132	N/A	C-C	C3.20	PT	
N11-PSSP-810	24	INTEGRALLY WELDED ATTACHMENT	80A3132	N/A	C-C	C3.20	PT	
N11-C-7001A-J	24	PIPE TO BALANCE HEADER	80A3131 80A3132	24-080-CS	C-F-2	C5.51	UT PT	△

SYSTEM:MAIN STEAM
NES ISO NUMBER 8610-07

SHOREHAM NUCLEAR POWER STATION
ISI PROGRAM PLAN AND SCHEDULE
80A8610 REV. 2

PERIOD 2
PAGE 9 OF 9

COMPONENT IDENTIFICATION	SIZE (IN)	COMPONENT DESCRIPTION	PROC. NO.	CAL. BLOCK	CODE CAT.	CODE NO.	CODE EXAM METH	REMARKS
N11-593A	16	ELBOW TO ELBOW	80A3131 80A3132	16-080-CS	C-F-2	C5.51	UT PT	△
N11-1857T	6	PIPE TO ELBOW	80A3131 80A3132	06-080-CS	C-F-2	C5.51	UT PT	

PERIOD 2A
(BREAK EXCLUSION)

SYSTEM:MAIN STEAM
NES ISO NUMBER 8610-01

SHOREHAM NUCLEAR POWER STATION
ISI PROGRAM PLAN AND SCHEDULE
80A8610 REV. 2

PERIOD 2A
PAGE 1 OF 15

COMPONENT IDENTIFICATION	SIZE (IN)	COMPONENT DESCRIPTION	PROC. NO.	CAL. BLOCK	CODE CAT.	CODE NO.	CODE EXAM METH	REMARKS
B21-NS002-BW12	24	PIPE TO VALVE AOV-082B	80A3131		B-J	B9.11	UT	

SYSTEM: MAIN STEAM
NES ISO NUMBER 8610-02

SHOREHAM NUCLEAR POWER STATION
ISI PROGRAM PLAN AND SCHEDULE
80A8610 REV. 2

PERIOD 2A
PAGE 2 OF 15

COMPONENT IDENTIFICATION	SIZE (IN)	COMPONENT DESCRIPTION	PROC. NO.	CAL. BLOCK	CODE CAT.	CODE NO.	CODE EXAM METH	REMARKS
B21-NS004-BW12	24	PIPE TO VALVE AOV-082D	80A3131	24-080-CS	B-J	B9.11	UT	SEE R.R.8610-R1

SYSTEM:MAIN STEAM
NES ISO NUMBER 8610-04

SHOREHAM NUCLEAR POWER STATION
ISI PROGRAM PLAN AND SCHEDULE
80A8610 REV. 2

PERIOD 2A
PAGE 3 OF 15

COMPONENT IDENTIFICATION	SIZE (IN)	COMPONENT DESCRIPTION	PROC. NO.	CAL. BLOCK	CODE CAT.	CODE NO.	CODE EXAM METH	REMARKS
B21-2237-A	3	ELBOW TO PIPE	80A3131	03-080-CS	B-J	B9.21	UT	
B21-2237-B	3	PIPE TO ELBOW	80A3131	03-080-CS	B-J	B9.21	UT	
B21-2237-C	3	ELBOW TO PIPE	80A3131	03-080-CS	B-J	B9.21	UT	

SYSTEM: MAIN STEAM
NES ISO NUMBER 8610-05

SHOREHAM NUCLEAR POWER STATION
ISI PROGRAM PLAN AND SCHEDULE
80A8610 REV. 2

PERIOD 2A
PAGE 4 OF 15

COMPONENT IDENTIFICATION	SIZE (IN)	COMPONENT DESCRIPTION	PROC. NO.	CAL. BLOCK	CODE CAT.	CODE NO.	CODE EXAM METH	REMARKS
N11-NS002-BW13	24	VALVE AOV-082B TO PIPE	80A3131	24-080-CS	C-F-2	C5.51	UT	
N11-567-F	2	S.O.L. BRANCH CONNECTION	80A3132	N/A	N/A	N/A	PT	

SYSTEM:MAIN STEAM
NES ISO NUMBER 8610-08

SHOREHAM NUCLEAR POWER STATION
ISI PROGRAM PLAN AND SCHEDULE
80A8610 REV. 2

PERIOD 2A
PAGE 5 OF 15

COMPONENT IDENTIFICATION	SIZE (IN)	COMPONENT DESCRIPTION	PROC. NO.	CAL. BLOCK	CODE CAT.	CODE NO.	CODE EXAM METH	REMARKS
B21-P2574-FWF	2	PIPE TO TEE	80A3132	N/A	N/A	N/A	PT	
B21-P2574-FWG	2	TEE TO PIPE	80A3132	N/A	N/A	N/A	PT	
B21-P2574-FWJ	2	TEE TO 2X1.5 REDUCER	80A3132	N/A	N/A	N/A	PT	
E32-P6000-FWA	1.5	REDUCER TO PIPE	80A3132	N/A	N/A	N/A	PT	
E32-P6000-B	1.5	PIPE TO ELBOW	80A3132	N/A	N/A	N/A	PT	
E32-P6000-C	1.5	ELBOW TO PIPE	80A3132	N/A	N/A	N/A	PT	
E32-P6000-D	1.5	PIPE TO ELBOW	80A3132	N/A	N/A	N/A	PT	

SYSTEM: MAIN STEAM
NES ISO NUMBER 8610-08

SHOREHAM NUCLEAR POWER STATION
ISI PROGRAM PLAN AND SCHEDULE
80A8610 REV. 2

PERIOD 2A
PAGE 6 OF 15

COMPONENT IDENTIFICATION	SIZE (IN)	COMPONENT DESCRIPTION	PROC. NO.	CAL. BLOCK	CODE CAT.	CODE NO.	CODE EXAM METH	REMARKS
E32-P6000-E	1.5	ELBOW TO PIPE	80A3132	N/A	N/A	N/A	PT	

SYSTEM:MAIN STEAM
NES ISO NUMBER 8610-09

SHOREHAM NUCLEAR POWER STATION
ISI PROGRAM PLAN AND SCHEDULE
80A8610 REV. 2

PERIOD 2A
PAGE 7 OF 15

COMPONENT IDENTIFICATION	SIZE (IN)	COMPONENT DESCRIPTION	PROC. NO.	CAL. BLOCK	CODE CAT.	CODE NO.	CODE EXAM METH	REMARKS
B21-P2575-G	2	TEE TO PIPE	80A3132	N/A	N/A	N/A	PT	
B21-P2575-H	2	PIPE TO ELBOW	80A3132	N/A	N/A	N/A	PT	
B21-P2575-FWL	2	PIPE TO 2X.75 ORIFICE	80A3132	N/A	N/A	N/A	PT	
B21-P2575-J	2	TEE TO 2X1.5 RED	80A3132	N/A	N/A	N/A	PT	
E32-P6001-FWQ	1.5	2X1.5 RED TO PIPE	80A3132	N/A	N/A	N/A	PT	
E32-P6001-FWR	1.5	PIPE TO ELBOW	80A3132	N/A	N/A	N/A	PT	
E32-P6001-FWT	1.5	ELBOW TO PIPE	80A3132	N/A	N/A	N/A	PT	

SYSTEM: MAIN STEAM
NES ISO NUMBER 8610-10

SHOREHAM NUCLEAR POWER STATION
ISI PROGRAM PLAN AND SCHEDULE
80A8610 REV. 2

PERIOD 2A
PAGE 8 OF 15

COMPONENT IDENTIFICATION	SIZE (IN)	COMPONENT DESCRIPTION	PROC. NO.	CAL. BLOCK	CODE CAT.	CODE NO.	CODE EXAM METH	REMARKS
B21-4206-J	3	PIPE TO ELBOW	80A3131	03-080-CS	N/A	N/A	UT	
B21-4206-K	3	ELBOW TO PIPE	80A3131	03-080-CS	N/A	N/A	UT	
B21-4206-L	3	PIPE TO ELBOW	80A3131	03-080-CS	N/A	N/A	UT	
B21-4206-M	3	ELBOW TO PIPE	80A3131	03-080-CS	N/A	N/A	UT	
B21-IC-899-FW9	3	PIPE TO VALVE MOV-034	80A3131	03-080-CS	N/A	N/A	UT	
B21-IC-899-FW10	3	VALVE MOV-034 TO PIPE	80A3131	03-080-CS	N/A	N/A	UT	
B21-4210-M	2	S.O.L BRANCH CONNECTION	80A3132	N/A	N/A	N/A	PT	

SYSTEM: MAIN STEAM
 NES ISC NUMBER 8610-10

SHOREHAM NUCLEAR POWER STATION
 ISI PROGRAM PLAN AND SCHEDULE
 80A8610 REV. 2

PERIOD 2A
 PAGE 9 OF 15

COMPONENT IDENTIFICATION	SIZE (IN)	COMPONENT DESCRIPTION	PROC. NO.	CAL. BLOCK	CODE CAT.	CODE NO.	CODE EXAM METH	REMARKS
B21-4210-N	2	S.O.L. TO PIPE	80A3132	N/A	N/A	N/A	PT	
B21-4210-FWP	2	S.O.L. BRANCH CONNECTION	80A3132	N/A	N/A	N/A	PT	
B21-4210-C	3	PIPE TO TEE	80A3131	03-080-CS	N/A	N/A	UT	
B21-4210-D	3	TEE TO PIPE	80A3131	03-080-CS	N/A	N/A	UT	
B21-P25A1-FWF	2	PIPE TO ELBOW	80A3132	N/A	N/A	N/A	PT	
B21-P25A1-FWE	2	ELBOW TO PIPE	80A3132	N/A	N/A	N/A	PT	
B21-P25A1-FWA	2	PIPE TO S.O.L.	80A3132	N/A	N/A	N/A	PT	

SYSTEM: MAIN STEAM
NES ISO NUMBER 8610-10

SHOREHAM NUCLEAR POWER STATION
ISI PROGRAM PLAN AND SCHEDULE
80A8610 REV. 2

PERIOD 2A
PAGE 10 OF 15

COMPONENT IDENTIFICATION	SIZE (IN)	COMPONENT DESCRIPTION	PROC. NO.	CAL. BLOCK	CODE CAT.	CODE NO.	CODE EXAM METH	REMARKS
B21-2410-H	3	TEE TO PIPE	80A3131	03-080-CC	N/A	N/A	UT	
B21-P2598-FWE	2	ELBOW TO PIPE	80A3132	N/A	N/A	N/A	PT	
B21-P2598-FWK	2	PIPE TO S.O.L.	80A3132	N/A	N/A	N/A	PT	

SYSTEM:MAIN STEAM
NES ISO NUMBER 8610-11

SHOREHAM NUCLEAR POWER STATION
ISI PROGRAM PLAN AND SCHEDULE
80A8610 REV. 2

PERIOD 2A
PAGE 11 OF 15

COMPONENT IDENTIFICATION	SIZE (IN)	COMPONENT DESCRIPTION	PROC. NO.	CAL. BLOCK	CODE CAT.	CODE NO.	CODE EXAM METH	REMARKS
E32-P6029-G	2	TEE TC PIPE	80A3132	N/A	N/A	N/A	PT	
E32-P6029-FWH	2	PIPE TO VALVE MOV-024	80A3132	N/A	N/A	N/A	PT	
E32-P6030-FWA	2	TEE TO PIPE	80A3132	N/A	N/A	N/A	PT	
E32-P6030-B	2	PIPE TO TEE	80A3132	N/A	N/A	N/A	PT	
E32-P6030-C	2	TEE TO PIPE	80A3132	N/A	N/A	N/A	PT	

SYSTEM: MAIN STEAM
NES ISO NUMBER 8610-12

SHOREHAM NUCLEAR POWER STATION
ISI PROGRAM PLAN AND SCHEDULE
80A8610 REV. 2

PERIOD 2A
PAGE 12 OF 15

COMPONENT IDENTIFICATION	SIZE (IN)	COMPONENT DESCRIPTION	PROC. NO.	CAL. BLOCK	CODE CAT.	CODE NO.	CODE EXAM METH	REMARKS
E32-P6002-FWA	1.5	2X1.5 RED INSERT TO PIPE	80A3132	N/A	B-J	B9.40	PT	
E32-P6002-FWU	1.5	PIPE TO ELBOW	80A3132	N/A	B-J	B9.40	PT	
E32-P6002-C	1.5	ELBOW TO PIPE	80A3132	N/A	B-J	B9.40	PT	
E32-P6002-FWCC	1.5	PIPE TO COUPLING	80A3132	N/A	B-J	B9.40	PT	
E32-P6002-FWBB	1.5	COUPLING TO PIPE	80A3132	N/A	B-J	B9.40	PT	
E32-P6002-FWAA	1.5	PIPE TO TEE	80A3132	N/A	B-J	B9.40	PT	
E32-P6002-FWY	1.5	COUPLING TO PIPE	80A3132	N/A	B-J	B9.40	PT	

SYSTEM:MAIN STEAM
NES ISO NUMBER 8610-12

SHOREHAM NUCLEAR POWER STATION
ISI PROGRAM PLAN AND SCHEDULE
80A8610 REV. 2

PERIOD 2A
PAGE 13 OF 15

COMPONENT IDENTIFICATION	SIZE (IN)	COMPONENT DESCRIPTION	PROC. NO.	CAL. BLOCK	CODE CAT.	CODE NO.	CODE EXAM METH	REMARKS
E32-P6002-FWZ	1.5	PIPE TO TEE	80A3132	N/A	B-J	B9.40	PT	
E32-P6076-A	1.5	TEE TO 1.5X.75 RED INSERT	80A3132	N/A	B-J	B9.40	PT	

SYSTEM: MAIN STEAM
NES ISO NUMBER 8610-13

SHOREHAM NUCLEAR POWER STATION
ISI PROGRAM PLAN AND SCHEDULE
80A8610 REV. 2

PERIOD 2A
PAGE 14 OF 15

COMPONENT IDENTIFICATION	SIZE (IN)	COMPONENT DESCRIPTION	PROC. NO.	CAL. BLOCK	CODE CAT.	CODE NO.	CODE EXAM METH	REMARKS
E32-P6003-FWA	1.5	2X1.5 RED TO PIPE	80A3132	N/A	B-J	B9.40	PT	
E32-P6003-B	1.5	PIPE TO ELBOW	80A3132	N/A	B-J	B9.40	PT	
E32-P6003-C	1.5	ELBOW TO PIPE	80A3132	N/A	B-J	B9.40	PT	
E32-P6003-FWU	1.5	PIPE TO ELBOW	80A3132	N/A	B-J	B9.40	PT	
E32-P6003-V	1.5	ELBOW TO PIPE	80A3132	N/A	B-J	B9.40	PT	
E32-P6003-W	1.5	PIPE TO ELBOW	80A3132	N/A	B-J	B9.40	PT	
E32-P6003-X	1.5	ELBOW TO PIPE	80A3132	N/A	B-J	B9.40	PT	

SYSTEM:MAIN STEAM
NES ISO NUMBER 8610-13

SHOREHAM NUCLEAR POWER STATION
ISI PROGRAM PLAN AND SCHEDULE
80A8610 REV. 2

PERIOD 2A
PAGE 15 OF 15

COMPONENT IDENTIFICATION	SIZE (IN)	COMPONENT DESCRIPTION	PROC. NO.	CAL. BLOCK	CODE CAT.	CODE NO.	CODE EXAM METH	REMARKS
E32-P6003-Y	1.5	PIPE TO ELBOW	80A3132	N/A	B-J	B9.40	PT	
E32-P6003-Z	1.5	ELBOW TO PIPE	80A3132	N/A	B-J	B9.40	PT	
E32-P6003-AA	1.5	PIPE TO ELBOW	80A3132	N/A	B-J	B9.40	PT	
E32-P6003-BP	1.5	ELBOW TO PIPE	80A3132	N/A	B-J	B9.40	PT	
E32-P6003-CC	1.5	PIPE TO ELBOW	80A3132	N/A	B-J	B9.40	PT	

PERIOD 3

SYSTEM: MAIN STEAM
NES ISC NUMBER 8610-02

SHOREHAM NUCLEAR POWER STATION
ISI PROGRAM PLAN AND SCHEDULE
80A8610 REV. 2

PERIOD 3
PAGE 1 OF 8

COMPONENT IDENTIFICATION	SIZE (IN)	COMPONENT DESCRIPTION	PROC. NO.	CAL. BLOCK	CODE CAT.	CODE NO.	CODE EXAM METH	REMARKS
B21-RV-092J-b	<2	VALVE RV-092J BOLTING	80A3133	N/A	B-G-2	B7.70	VT-1	
B21-RV-092H-b	<2	VALVE RV-092H BOLTING	80A3133	N/A	B-G-2	B7.70	VT-1	
B21-RV-092K-b	<2	VALVE RV-082K BOLTING	80A3133	N/A	B-G-2	B7.70	VT-1	
B21-RV-092G-b	<2	VALVE RV-092G BOLTING	80A3133	N/A	B-G-2	E7.70	VT-1	
B21-RV-092F-b	<2	VALVE RV-092F BOLTING	80A3133	N/A	B-G-2	B7.70	VT-1	
B21-AOV-081C-b	<2	VALVE AOV-081C BOLTING	80A3133	N/A	B-G-2	B7.70	VT-1	
B21-AOV-082C-b	<2	VALVE AOV-082C BOLTING	80A3133	N/A	B-G-2	B7.70	VT-1	

SYSTEM:MAIN STEAM
NES ISO NUMBER 8610-02

SHOREHAM NUCLEAR POWER STATION
ISI PROGRAM PLAN AND SCHEDULE
80A8610 REV. 2

PERIOD 3
PAGE 2 OF 8

COMPONENT IDENTIFICATION	SIZE (IN)	COMPONENT DESCRIPTION	PROC. NO.	CAL. BLOCK	CODE CAT.	CODE NO.	CODE EXAM METH	REMARKS
B21-NS004-BW02	24	PIPE TO PIPE	80A3131 80A3132	24-080-CS	B-J	B9.11	UT PT	
B21-C1-B	24	ELBOW TO PIPE	80A3131 80A3132	24-080-CS	B-J	B9.11	UT PT	
B21-C1-B-U1	24	ELBOW LONG SEAM SHORT SIDE	80A3131 80A3132	24-080-CS	B-J	B9.12	UT PT	
B21-C1-B-U2	24	ELBOW LONG SEAM LONG SIDE	80A3131 80A3132	24-080-CS	B-J	B9.12	UT PT	
B21-C3-A	24	ELBOW TO PIPE	80A3131 80A3132	24-080-CS	B-J	B9.11	UT PT	
B21-C3-A-U1	24	ELBOW LONG SEAM SHORT SIDE	80A3131 80A3132	24-080-CS	B-J	B9.12	UT PT	
B21-C3-A-U2	24	ELBOW LONG SEAM LONG SIDE	80A3131 80A3132	24-080-CS	B-J	B9.12	UT PT	

SYSTEM: MAIN STEAM
NES ISO NUMBER 8610-02

SHOREHAM NUCLEAR POWER STATION
ISI PROGRAM PLAN AND SCHEDULE
80A8610 REV. 2

PERIOD 3
PAGE 3 OF 8

COMPONENT IDENTIFICATION	SIZE (IN)	COMPONENT DESCRIPTION	PROC. NO.	CAL. BLOCK	CODE CAT.	CODE NO.	CODE EXAM METH	REMARKS
B21-C3-AF	24	PIPE TO PIPE	80A3131 80A3132	24-080-CS	B-J	B9.11	UT PT	
B21-C4-E	24	PIPE TO PIPE	80A3131 80A3132	24-080-CS	B-J	B9.11	UT PT	
B21-NS003-BW11	24	VALVE AOV-081C TO PIPE	80A3131 80A3132	24-080-CS	B-J	B9.11	UT PT	
B21-HD1	24	INTEGRALLY WELDED ATTACHMENT	80A3132	N/A	B-K-1	B10.10	PT	
B21-HC1	24	INTEGRALLY WELDED ATTACHMENT	80A3132	N/A	B-K-1	B10.10	PT	

SYSTEM:MAIN STEAM
NES ISO NUMBER 8610-03

SHOREHAM NUCLEAR POWER STATION
ISI PROGRAM PLAN AND SCHEDULE
80A8610 REV. 2

PERIOD 3
PAGE 4 OF 8

COMPONENT IDENTIFICATION	SIZE (IN)	COMPONENT DESCRIPTION	PROC. NO.	CAL. BLOCK	CODE CAT.	CODE NO.	CGDE EXAM METH	REMARKS
B21-D3-B	6	SWEEP-O-LET BRANCH CONNECTION	80A3131 80A3132	24-080-CS	B-J	B9.31	UT PT	
B21-D3-C	6	SWEEP-O-LET TO PIPE	80A3131 80A3132	06-160-CS	B-J	B9.11	UT PT	
B21-D3-D	6	PIPE TO FLANGE	80A3131 80A3132	06-160-CS	B-J	B9.11	UT PT	

SYSTEM:MAIN STEAM
NES ISO NUMBER 8610-04

SHOREHAM NUCLEAR POWER STATION
ISI PROGRAM PLAN AND SCHEDULE
80A8610 REV. 2


PERIOD 3
PAGE 5 OF 8

COMPONENT IDENTIFICATION	SIZE (IN)	COMPONENT DESCRIPTION	PROC. NO.	CAL. BLOCK	CODE CAT.	CODE NO.	CODE EXAM METH	REMARKS
B21-IC-898-FW4	3	PIPE TO VALVE MOV-032	80A3132	N/A	B-J	B9.21	PT	

SYSTEM:MAIN STEAM
NES ISO NUMBER 8610-06

SHOREHAM NUCLEAR POWER STATION
ISI PROGRAM PLAN AND SCHEDULE
80A8610 REV. 2

PERIOD 3
PAGE 6 OF 8

COMPONENT IDENTIFICATION	SIZE (IN)	COMPONENT DESCRIPTION	PROC. NO.	CAL. BLOCK	CODE CAT.	CODE NO.	CODE EXAM METH	REMARKS
N11-PSSP-844	24	INTEGRALLY WELDED ATTACHMENT	80A3132	N/A	C-C	C3.20	PT	
N11-PSR-174	24	INTEGRALLY WELDED ATTACHMENT	80A3132	N/A	C-C	C3.20	PT	
N11-PSA-117	24	INTEGRALLY WELDED ATTACHMENT	80A3132	N/A	C-C	C3.20	PT	
N11-PSSP-805	24	INTEGRALLY WELDED ATTACHMENT	80A3132	N/A	C-C	C3.20	PT	
N11-PSSP-812	24	INTEGRALLY WELDED ATTACHMENT	80A3132	N/A	C-C	C3.20	PT	
N11-1849-B	24	PIPE TO ELBOW	80A3131 80A3132	24-080-CS	C-F-2	C5.51	UT PT	
N11-C-7001A-D	24	BALANCE HEADER TO PIPE	80A3131 80A3132	24-080-CS	C-F-2	C5.51	UT PT	

SYSTEM: MAIN STEAM
NES ISO NUMBER 8610-06

SHOREHAM NUCLEAR POWER STATION
ISI PROGRAM PLAN AND SCHEDULE
80A8610 REV. 2

PERIOD 3
PAGE 7 OF 8

COMPONENT IDENTIFICATION	SIZE (IN)	COMPONENT DESCRIPTION	PROC. NO.	CAL. BLOCK	CODE CAT.	CODE NO.	CODE EXAM METH	REMARKS
N11-IC-554-FW11	24	PIPE TO VALVE MSV4	80A3131 80A3132	24-080-CS	C-F-2	C5.51	UT PT	△ 2

SYSTEM:MAIN STEAM
NES ISO NUMBER 8610-07

SHOREHAM NUCLEAR POWER STATION
ISI PROGRAM PLAN AND SCHEDULE
80A8610 REV. 2

PERIOD 3
PAGE 8 OF 8

COMPONENT IDENTIFICATION	SIZE (IN)	COMPONENT DESCRIPTION	PROC. NO.	CAL. BLOCK	CODE CAT.	CODE NO.	CODE EXAM METH	REMARKS
N11-PSA-193	16	INTEGRALLY WELDED ATTACHMENT	80A3132	N/A	C-C	C3.20	PT	
N11-PSSP-852	10	INTEGRALLY WELDED ATTACHMENT	80A3132	N/A	C-C	C3.20	PT	
N11-PSSP-848	8	INTEGRALLY WELDED ATTACHMENT	80A3132	N/A	C-C	C3.20	PT	
N11-IC-594-FW1	16	PIPE TO ELBOW	80A3131 80A3132	16-080-CS	C-F-2	C5.51	UT PT	△

PERIOD 3A
(BREAK EXCLUSION)

SYSTEM: MAIN STEAM
NES ISO NUMBER 8610-02

SHOREHAM NUCLEAR POWER STATION
ISI PROGRAM PLAN AND SCHEDULE
80A8610 REV. 2

PERIOD 3A
PAGE 1 OF 14

COMPONENT IDENTIFICATION	SIZE (IN)	COMPONENT DESCRIPTION	PROC. NO.	CAL. BLOCK	CODE CAT.	CODE NO.	CODE EXAM METH	REMARKS
B21-NS003-BW11	24	PIPE TO VALVE AOV-082C	80A3131	24-080-CS	B-J	B9.11	UT	SEE NOTE 2

SYSTEM:MAIN STEAM
NES ISO NUMBER 8610-04

SHOREHAM NUCLEAR POWER STATION
ISI PROGRAM PLAN AND SCHEDULE
80A8610 REV. 2

PERIOD 3A
PAGE 2 OF 14

COMPONENT IDENTIFICATION	SIZE (IN)	COMPONENT DESCRIPTION	PROC. NO.	CAL. BLOCK	CODE CAT.	CODE NO.	CODE EXAM METH	REMARKS
B21-IC-898-FW3	3	PIPE TO PIPE	80A3131	03-080-CS	B-J	B9.21	UT	
B21-IC-898-FW4	3	PIPE TO VALVE MOV-032	80A3131	03-080-CS	B-J	B9.21	UT	
B21-IC-898-FW9	3	VALVE MOV-032 TO ELBOW	80A3131	03-080-CS	B-J	B9.21	UT	

SYSTEM:MAIN STEAM
NES ISO NUMBER 8610-06

SHCREHAM NUCLEAR POWER STATION
ISI PROGRAM PLAN AND SCHEDULE
80A8610 REV. 2

PERIOD 3A
PAGE 3 OF 14

COMPONENT IDENTIFICATION	SIZE (IN)	COMPONENT DESCRIPTION	PROC. NO.	CAL. BLOCK	CODE CAT.	CODE NO.	CODE EXAM METH	REMARKS
N11-NS003-BW3	24	VALVE AOV-082C TO PIPE	80A3131	24-080-CS	C-F-2	C5.51	UT	
N11-NS004-BW13	24	VALVE AOV-082D TO PIPE	80A3131	24-080-CS	C-F-2	C5.51	UT	
N11-575-E	2	S.O.L. BRANCH CONNECTION	80A3132	N/A	N/A	N/A	PT	
N11-583-F	2	S.O.L. BRANCH CONNECTION	80A3132	N/A	N/A	N/A	PT	

SYSTEM:MAIN STEAM
NES ISO NUMBER 8610-08

SHOREHAM NUCLEAR POWER STATION
ISI PROGRAM PLAN AND SCHEDULE
80A8610 REV. 2

PERIOD 3A
PAGE 4 OF 14

COMPONENT IDENTIFICATION	SIZE (IN)	COMPONENT DESCRIPTION	PROC. NO.	CAL. BLOCK	CODE CAT.	CODE NO.	CODE EXAM METH	REMARKS
E32-P6000-F	1.5	PIPE TO TEE	80A3132	N/A	N/A	N/A	PT	
E32-P6000-M	1.5	TEE TO REDUCER	80A3132	N/A	N/A	N/A	PT	
E32-P6000-G	1.5	TEE TO PIPE	80A3132	N/A	N/A	N/A	PT	
E32-P6000-H	1.5	PIPE TO TEE	80A3132	N/A	N/A	N/A	PT	
E32-P6072-A	1.5	TEE TO 1.5 X 1 REDUCER	80A3132	N/A	N/A	N/A	PT	
E32-P6000-I	1.5	TEE TO PIPE	80A3132	N/A	N/A	N/A	PT	
E32-P6000-J	1.5	PIPE TO ELBOW	80A3132	N/A	N/A	N/A	PT	

SYSTEM:MAIN STEAM
NES ISO NUMBER 8610-08

SHOREHAM NUCLEAR POWER STATION
ISI PROGRAM PLAN AND SCHEDULE
80A8610 REV. 2

PERIOD 3A
PAGE 5 OF 14

COMPONENT IDENTIFICATION	SIZE (IN)	COMPONENT DESCRIPTION	PROC. NO.	CAL. BLOCK	CODE CAT.	CODE NO.	CODE EXAM METH	REMARKS
E32-P6000-K	1.5	ELBOW TO PIPE	80A3132	N/A	N/A	N/A	PT	
E32-P6000-L	1.5	PIPE TO VALVE MOV-021C	80A3132	N/A	N/A	N/A	PT	

SYSTEM:MAIN STEAM
NES ISO NUMBER 8610-09

SHOREHAM NUCLEAR POWER STATION
ISI PROGRAM PLAN AND SCHEDULE
80A8610 REV. 2

PERIOD 3A
PAGE 6 OF 14

COMPONENT IDENTIFICATION	SIZE (IN)	COMPONENT DESCRIPTION	PROC. NO.	CAL. BLOCK	CODE CAT.	CODE NO.	CODE EXAM METH	REMARKS
B21-P2575-FWA	2	PIPE TO COUPLING	80A3132	N/A	N/A	N/A	PT	
B21-P2575-FWK	2	COUPLING TO PIPE	80A3132	N/A	N/A	N/A	PT	
B21-P2575-B	2	PIPE TO TEE	80A3132	N/A	N/A	N/A	PT	
B21-P2575-C	2	TEE TO PIPE	80A3132	N/A	N/A	N/A	PT	
B21-P2575-FWD	2	PIPE TO VALVE MOV-064	80A3132	N/A	N/A	N/A	PT	
B21-P2575-FWE	2	TEE TO PIPE	80A3132	N/A	N/A	N/A	PT	
B21-P2575-F	2	PIPE TO TEE	80A3132	N/A	N/A	N/A	PT	

SYSTEM:MAIN STEAM
NES ISO NUMBER 8610-10

SHOREHAM NUCLEAR POWER STATION
ISI PROGRAM PLAN AND SCHEDULE
80A8610 REV. 2

PERIOD 3A
PAGE 7 OF 14

COMPONENT IDENTIFICATION	SIZE (IN)	COMPONENT DESCRIPTION	PROC. NO.	CAL. BLOCK	CODE CAT.	CODE NO.	CODE EXAM METH	REMARKS
B21-4210-E	2	BOSS BRANCH CONNECTION	80A3132	N/A	N/A	N/A	PT	
B21-4210-F	3	PIPE TO 3X2 RED	80A3131	03-080-CS	N/A	N/A	UT	
B21-P25A1-FWD	2	BOSS TO PIPE	80A3132	N/A	N/A	N/A	PT	
B21-P25A1-C	2	PIPE TO ELBOW	80A3132	N/A	N/A	N/A	PT	
B21-P25A1-FWI	2	ELBOW TO PIPE	80A3132	N/A	N/A	N/A	PT	
B21-P25A1-FWH	2	PIPE TO ELBOW	80A3132	N/A	N/A	N/A	PT	
B21-P25A1-FWG	2	ELBOW TO PIPE	80A3132	N/A	N/A	N/A	PT	

SYSTEM:MAIN STEAM
NES ISO NUMBER 8610-10

SHOREHAM NUCLEAR POWER STATION
ISI PROGRAM PLAN AND SCHEDULE
80A8610 REV. 2

PERIOD 3A
PAGE 8 OF 14

COMPONENT IDENTIFICATION	SIZE (IN)	COMPONENT DESCRIPTION	PROC. NO.	CAL. BLOCK	CODE CAT.	CODE NO.	CODE EXAM METH	REMARKS
B21-P25A0-FWF	2	3X2 RED TO PIPE	80A3131	02-160-CS	N/A	N/A	UT	△
B21-P25A0-FWK	2	PIPE TO ELBOW	80A3132	N/A	N/A	N/A	PT	
B21-P25A0-FWJ	2	ELBOW TO PIPE	80A3132	N/A	N/A	N/A	PT	
B21-P25A0-FWI	2	PIPE TO ELBOW	80A3132	N/A	N/A	N/A	PT	
B21-P25A0-FWH	2	ELBOW TO PIPE	80A3132	N/A	N/A	N/A	PT	
B21-P25A0-E	2	PIPE TO ELBOW	80A3132	N/A	N/A	N/A	PT	
B21-P25A0-FWG	2	ELBOW TO PIPE	80A3132	N/A	N/A	N/A	PT	

SYSTEM:MAIN STEAM
NES ISO NUMBER 8610-10

SHOREHAM NUCLEAR POWER STATION
ISI PROGRAM PLAN AND SCHEDULE
80A8610 REV. 2

PERIOD 3A
PAGE 9 OF 14

COMPONENT IDENTIFICATION	SIZE (IN)	COMPONENT DESCRIPTION	PROC. NO.	CAL. BLOCK	CODE CAT.	CODE NO.	CODE EXAM METH	REMARKS
B21-P25A0-C	2	PIPE TO ELBOW	80A3132	N/A	N/A	N/A	PT	
B21-P25A0-FWL	2	ELBOW TO PIPE	80A3132	N/A	N/A	N/A	PT	
B21-P25A0-FWA	2	PIPE TO S.O.L.	80A3132	N/A	N/A	N/A	PT	

SYSTEM: MAIN STEAM
NES ISO NUMBER 8610-11

SHOREHAM NUCLEAR POWER STATION
ISI PROGRAM PLAN AND SCHEDULE
80A8610 REV. 2

PERIOD 3A
PAGE 10 OF 14

COMPONENT IDENTIFICATION	SIZE (IN)	COMPONENT DESCRIPTION	PROC. NO.	CAL. BLOCK	CODE CAT.	CODE NO.	CODE EXAM METH	REMARKS
E32-P6029-FWA	2	S.O.L. TO PIPE	80A3132	N/A	N/A	N/A	PT	
E32-P6029-B	2	PIPE TO ELBOW	80A3132	N/A	N/A	N/A	PT	
E32-P6029-FWC	2	ELBOW TO PIPE	80A3132	N/A	N/A	N/A	PT	
E32-P6029-D	2	PIPE TO TEE	80A3132	N/A	N/A	N/A	PT	
E32-P6029-E	2	TEE TO PIPE	80A3132	N/A	N/A	N/A	PT	
E32-P6029-F	2	PIPE TO TEE	80A3132	N/A	N/A	N/A	PT	

SYSTEM:MAIN STEAM
NES ISO NUMBER 8610-12

SHOREHAM NUCLEAR POWER STATION
ISI PROGRAM PLAN AND SCHEDULE
80A8610 REV. 2

PERIOD 3A
PAGE 11 OF 14

COMPONENT IDENTIFICATION	SIZE (IN)	COMPONENT DESCRIPTION	PROC. NO.	CAL. BLOCK	CODE CAT.	CODE NO.	CODE EXAM METH	REMARKS
B21-P2572-H	2	PIPE TO ELBOW	80A3132	N/A	3-J	B9.40	PT	
B21-P2572-FWL	2	PIPE TO 2X.75 ORIFICE	80A3132	N/A	B-J	B9.40	PT	
E32-P6002-FWL	1.5	VALVE MOV-021A TO PIPE	80A3132	N/A	B-J	B9.40	PT	
E32-P6002-K	1.5	PIPE TO ELBOW	80A3132	N/A	B-J	B9.40	PT	
E32-P6002-FWW	1.5	ELBOW TO PIPE	80A3132	N/A	B-J	B9.40	PT	
E32-P6002-F	1.5	PIPE TO TEE	80A3132	N/A	B-J	B9.40	PT	
F32-P6002-FWP	1.5	TEE TO 1.5X3.25 RED INSERT	80A3132	N/A	B-J	B9.40	PT	

SYSTEM:MAIN STEAM
NES ISO NUMBER 8610-12

SHOREHAM NUCLEAR POWER STATION
ISI PROGRAM PLAN AND SCHEDULE
80A8610 REV. 2

PERIOD 3A
PAGE 12 OF 14

COMPONENT IDENTIFICATION	SIZE (IN)	COMPONENT DESCRIPTION	PROC	CAL. BLOCK	CODE CAT.	CODE NO.	CODE EXAM METH	REMARKS
E32-P6002-G	1.5	TEE TO PIPE	80A3132	N/A	B-J	B9.40	PT	
E32-P6002-FWX	1.5	PIPE TO COUPLING	80A3132	N/A	B-J	B9.40	PT	

SYSTEM: MAIN STEAM
NES ISO NUMBER 8610-13

SHOREHAM NUCLEAR POWER STATION
ISI PROGRAM PLAN AND SCHEDULE
80A8610 REV. 2

PERIOD 3A
PAGE 13 OF 14

COMPONENT IDENTIFICATION	SIZE (IN)	COMPONENT DESCRIPTION	PROC. NO.	CAL. BLOCK	CODE CAT.	CODE NO.	CODE EXAM METH	REMARKS
B21-P2573-FWA	2	PIPE TO COUPLING	80A3132	N/A	B-J	B9.40	PT	
B21-P2573-FWK	2	COUPLING TO PIPE	80A3132	N/A	B-J	B9.40	PT	
B21-P2573-B	2	PIPE TO TEE	80A3132	N/A	B-J	B9.40	PT	
B21-P2573-FWL	2	TEE TO PIPE	80A3132	N/A	B-J	B9.40	PT	
B21-P2573-FWD	2	PIPE TO VALVE MOV-062	80A3132	N/A	B-J	B9.40	PT	
B21-P2573-FWM	2	TEE TO PIPE	80A3132	N/A	B-J	B9.40	PT	
B21-P2573-FWN	2	PIPE TO TEE	80A3132	N/A	B-J	B9.40	PT	

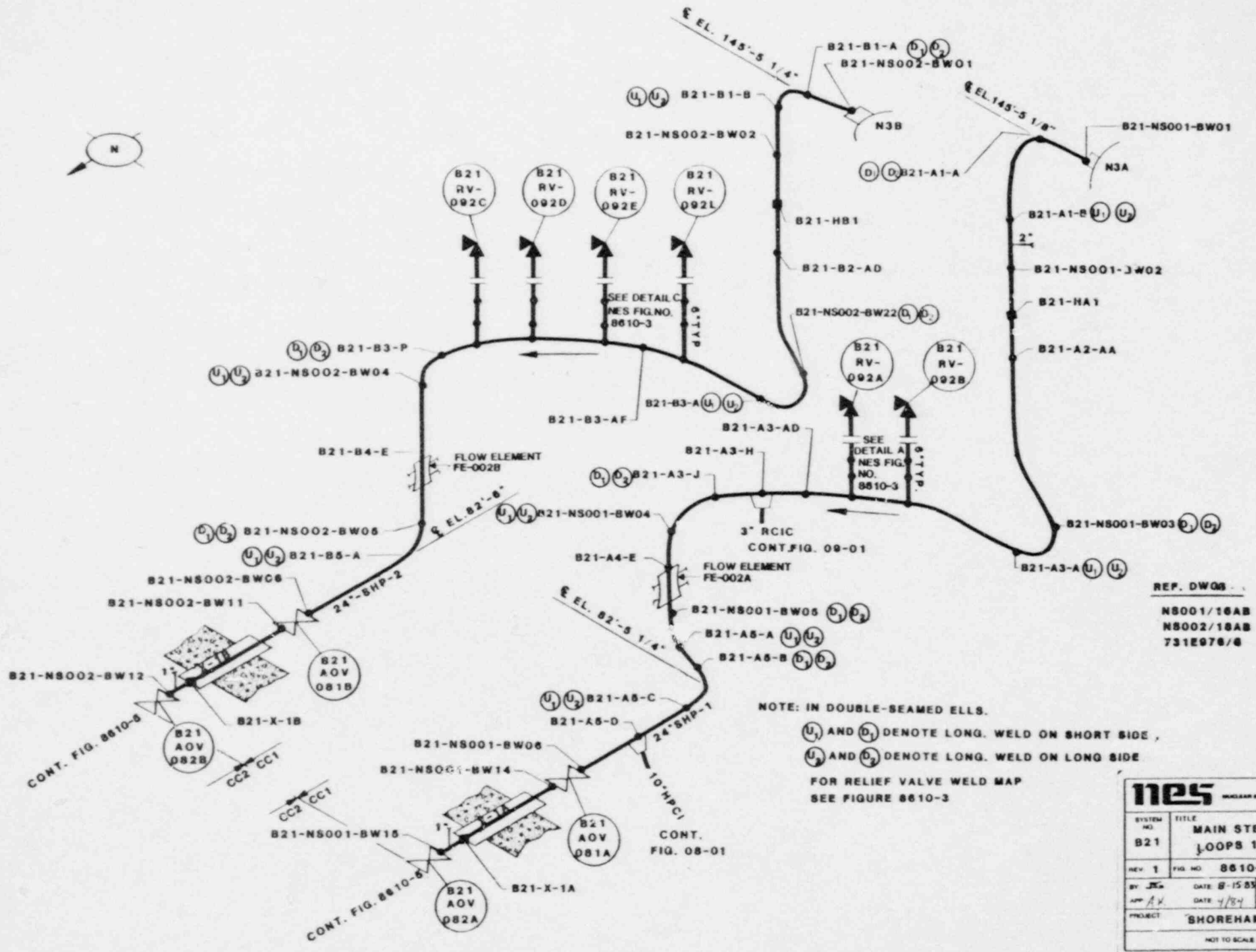
SYSTEM: MAIN STEAM
NES ISO NUMBER 8610-13

SHOREHAM NUCLEAR POWER STATION
ISI PROGRAM PLAN AND SCHEDULE
80A8610 REV. 2

PERIOD 3A
PAGE 14 OF 14

COMPONENT IDENTIFICATION	SIZE (IN)	COMPONENT DESCRIPTION	PROC. NO.	CAL. BLOCK	CODE CAT.	CODE NO.	CODE EXAM METH	REMARKS
B21-P2573-FWO	2	TEE TO PIPE	80A3132	N/A	B-J	B9.40	PT	
B21-P2573-FWP	2	PIPE TO ELBOW	80A3132	N/A	B-J	B9.40	PT	
B21-P2573-FWQ	2	ELBOW TO 2X.75 ORIFICE	80A3132	N/A	B-J	B9.40	PT	
B21-P2573-J	2	TEE TO 2X1.5 RED	80A3132	N/A	B-J	B9.40	PT	

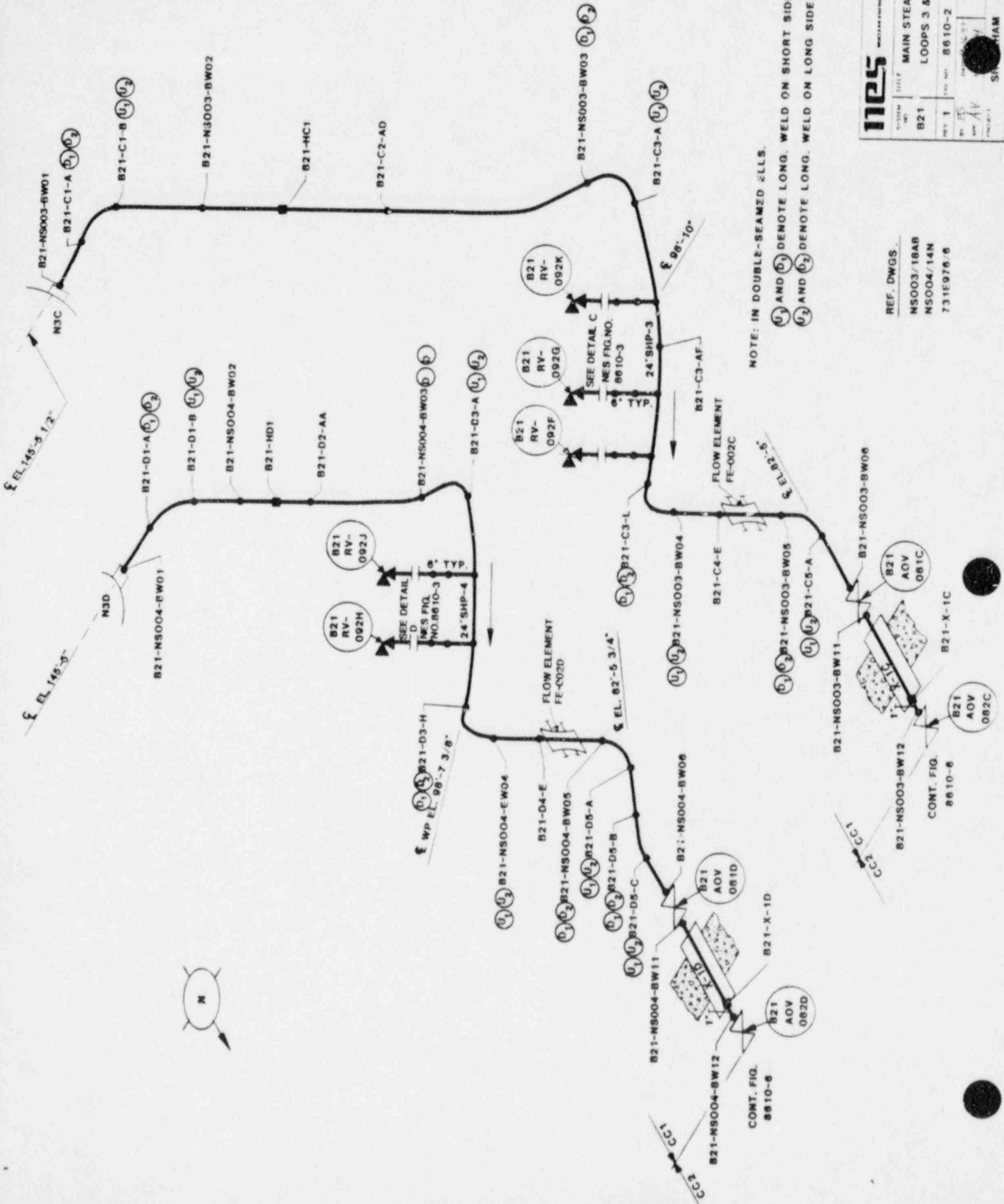
SYSTEM
ISOMETRIC FIGURES



REF. DWGS
 NS001/18AB
 NS002/18AB
 731E976/6

NOTE: IN DOUBLE-BEAMED ELLS.
 U₁ AND D₁ DENOTE LONG. WELD ON SHORT SIDE,
 U₂ AND D₂ DENOTE LONG. WELD ON LONG SIDE
 FOR RELIEF VALVE WELD MAP
 SEE FIGURE 8610-3

nes NUCLEAR ENERGY SERVICES	
SYSTEM NO. B21	TITLE MAIN STEAM LOOPS 1&2
REV 1	FIG. NO. 8610-1
BY JJK APP AY	DATE 8-15-83 DATE 4/84
PROJECT SHOREHAM	
NOT TO SCALE	



NOTE: IN DOUBLE-SEAMED ELLS,
 U₁ AND U₂ DENOTE LONG. WELD ON SHORT SIDE
 U₃ AND U₄ DENOTE LONG. WELD ON LONG SIDE

REF. DWGS.
 NS003/18AB
 NS004/14N
 731E976.6

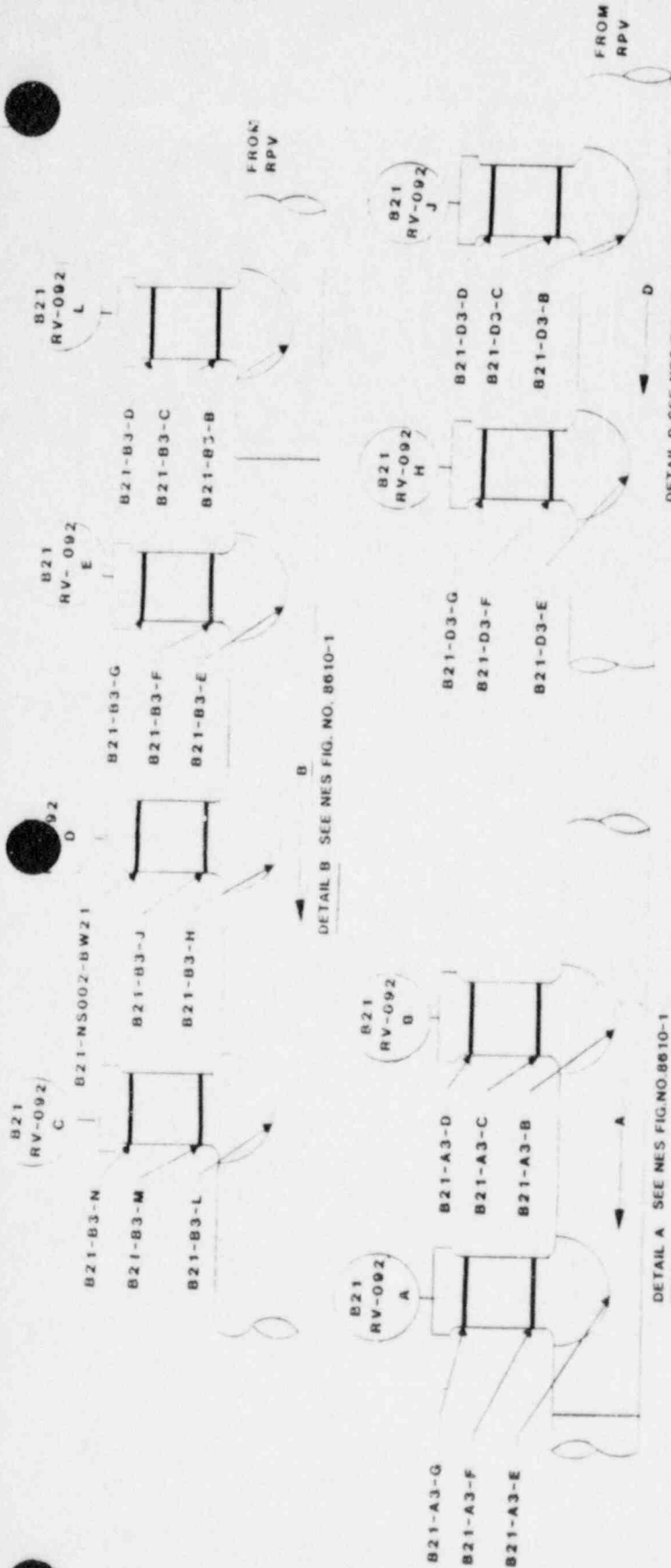
INES	
SYSTEM	MAIN STEAM
TITLE	LOOPS 3 & 4
NO.	8610-2
REV.	1
DATE	8610-2
BY	AA
CHECKED	AA
APPROVED	AA
DESIGNED	AA
DRAWN	AA
SCALE	
PROJECT	SHAM



CONT. FIG. 8610-6

CONT. FIG. 8610-6

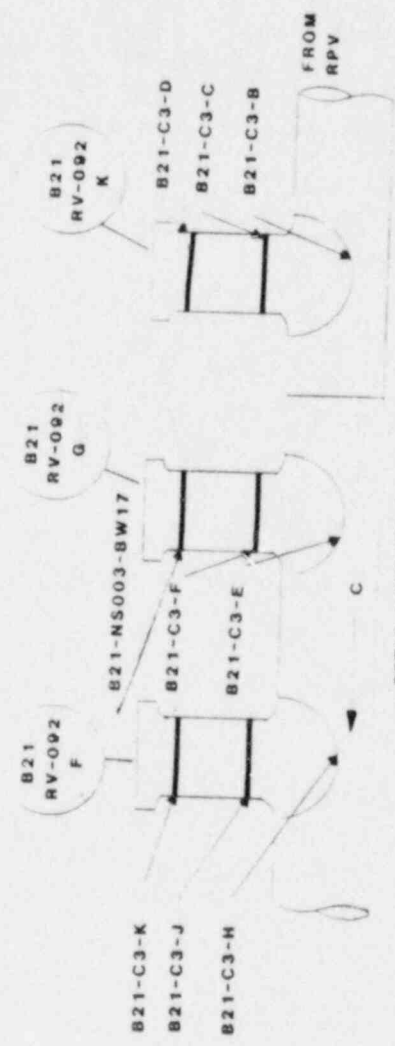
CONT. FIG. 8610-6



DETAIL B SEE NES FIG. NO. 8610-1

DETAIL A SEE NES FIG. NO. 8610-1

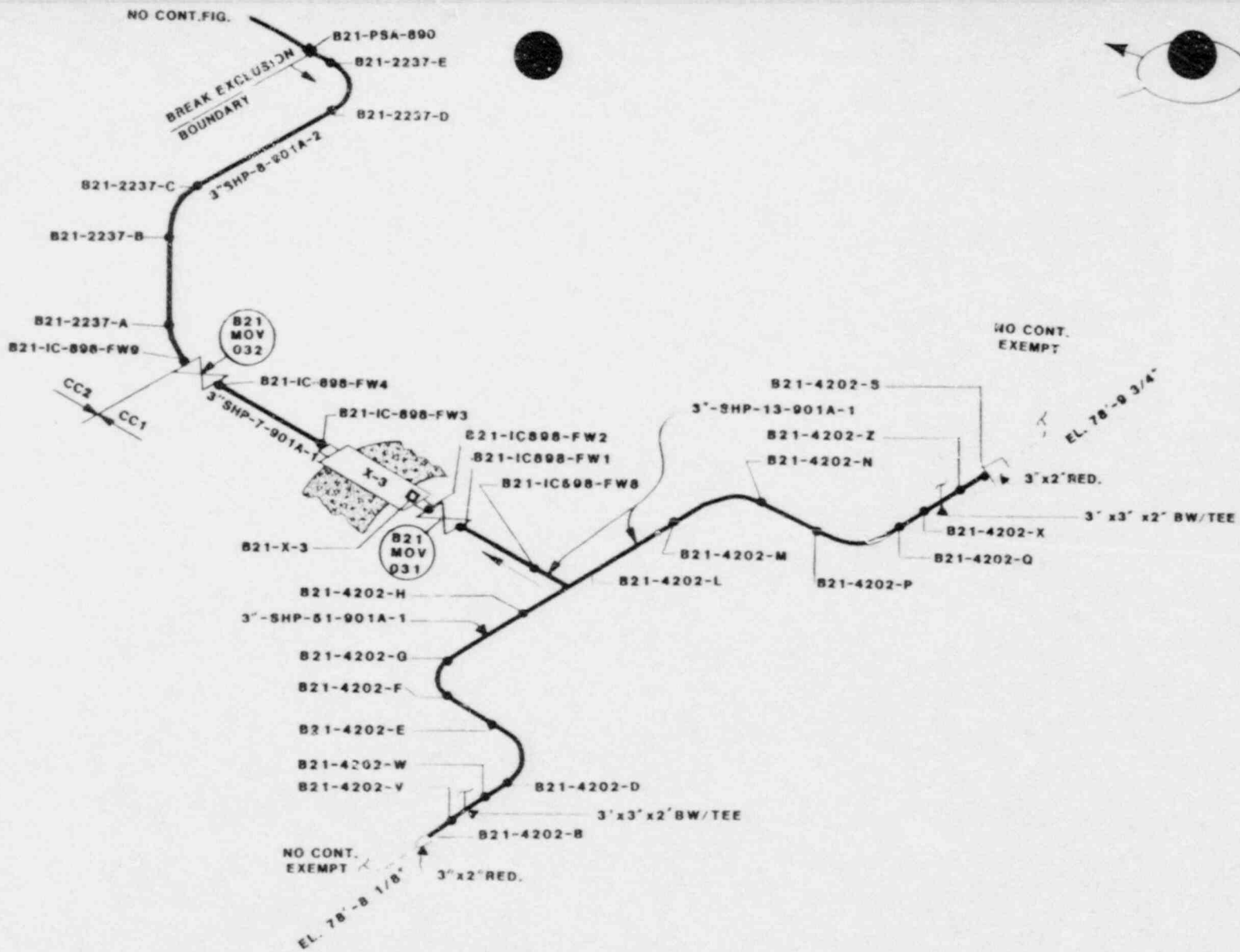
DETAIL D SEE NES FIG. NO. 8610-2



DETAIL C SEE NES FIG. NO. 8610-2

REF. DWG
 NS001/18AB 731E976/8
 NS002/18AB
 NS003/18AB
 NS004/14N

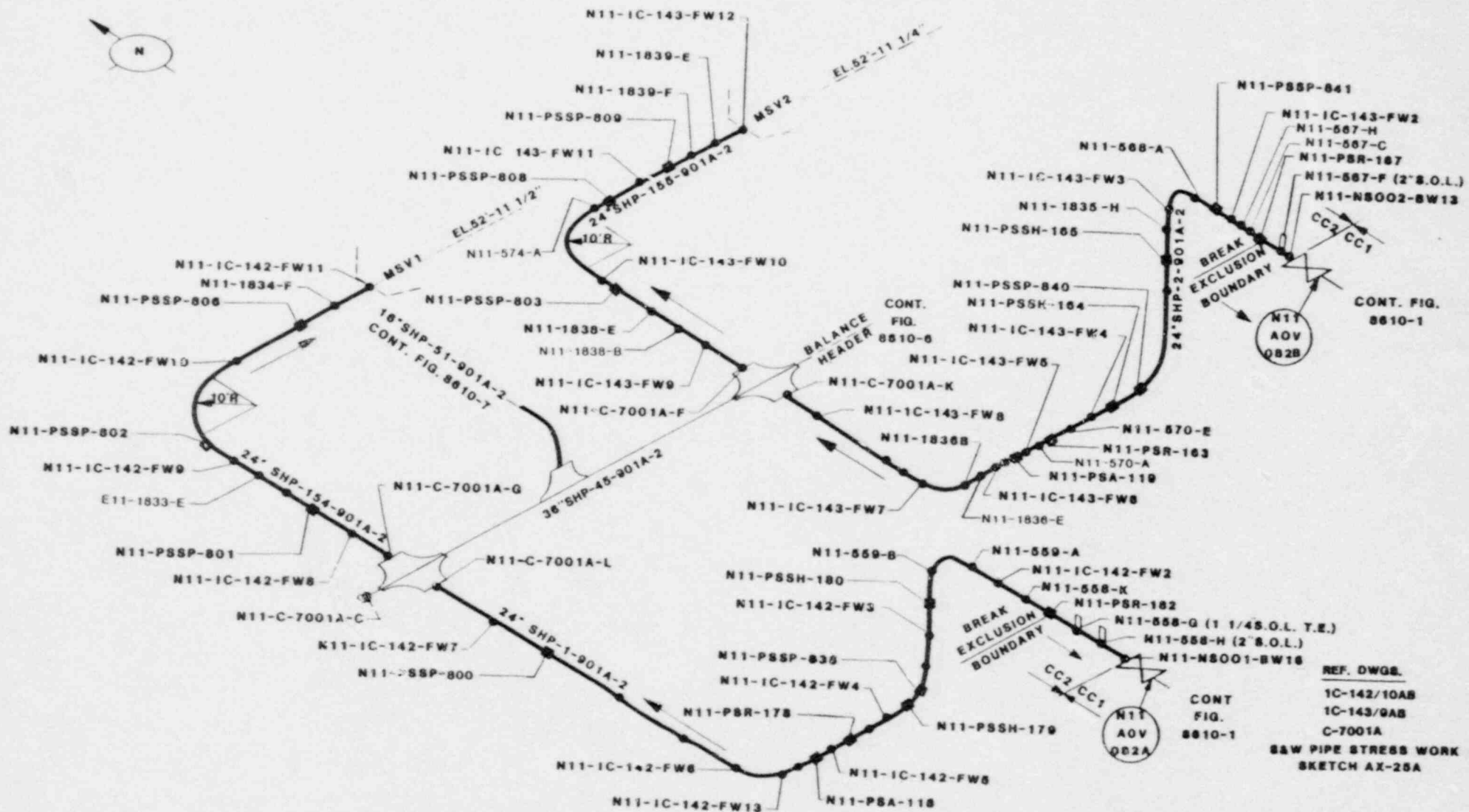
IPS		NUCLEAR ENERGY DIVISION	
SYSTEM NO.	TITLE	REV.	FIG. NO.
B21	MAIN STEAM RELIEF VALVES	0	8610-3
DATE	DATE	DATE	DATE
APR 1971	MAY 1971	MAY 1971	MAY 1971
PROJECT			SHORENAM
NOT TO SCALE			



REF.DWGS.
 IC-898/3AB
 S&W PIPE STRESS
 WORK SKETCH AX-25F

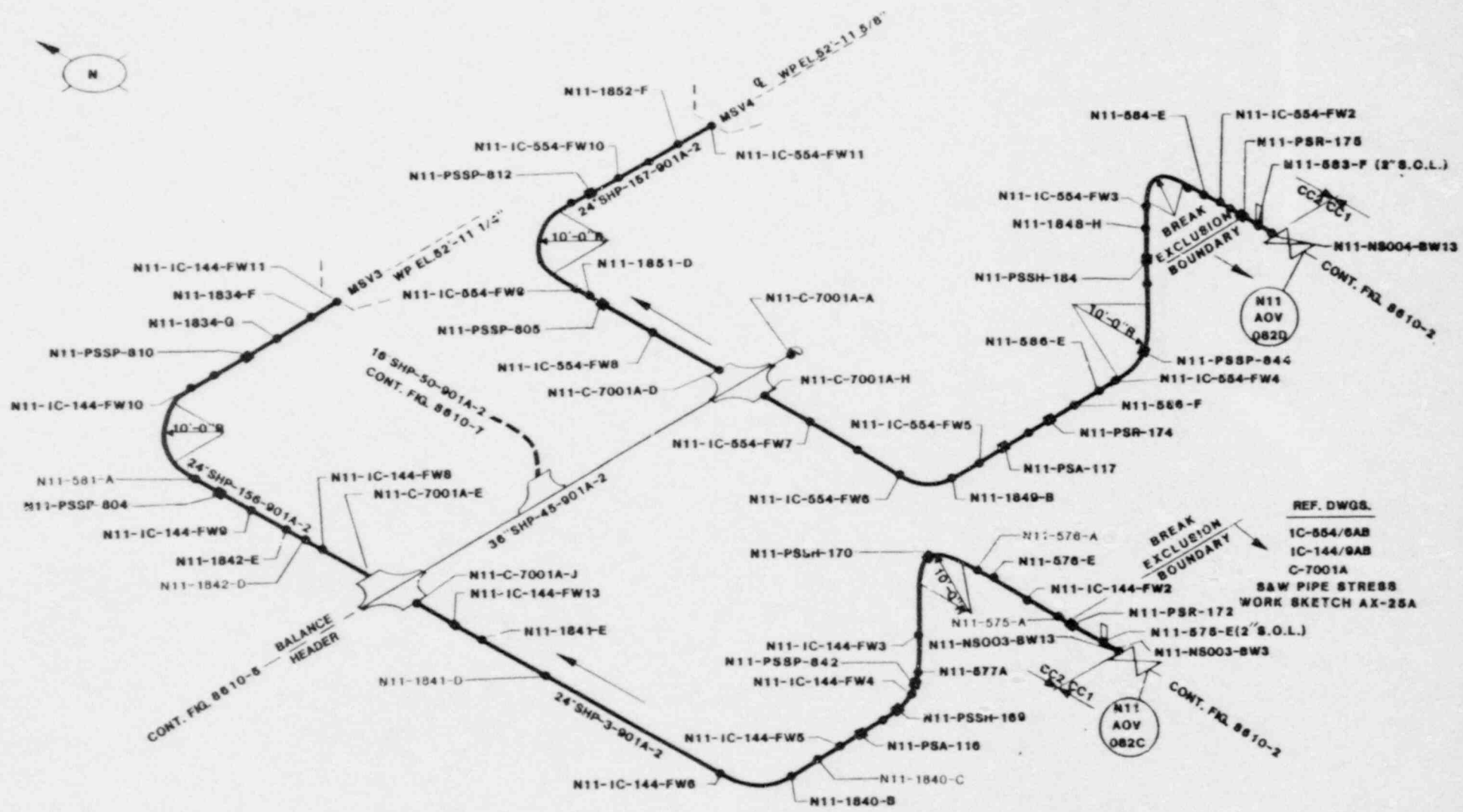


nes NUCLEAR ENERGY SERVICES	
SYSTEM NO. B21	TITLE MAIN STEAM LEAKAGE CONTROL SYSTEM
REV 1	FIG NO 8610-4
BY: <i>AK</i>	DATE: <i>1/29</i>
APP: <i>AK</i>	DATE: <i>1/29</i>
PROJECT SHOREHAM	



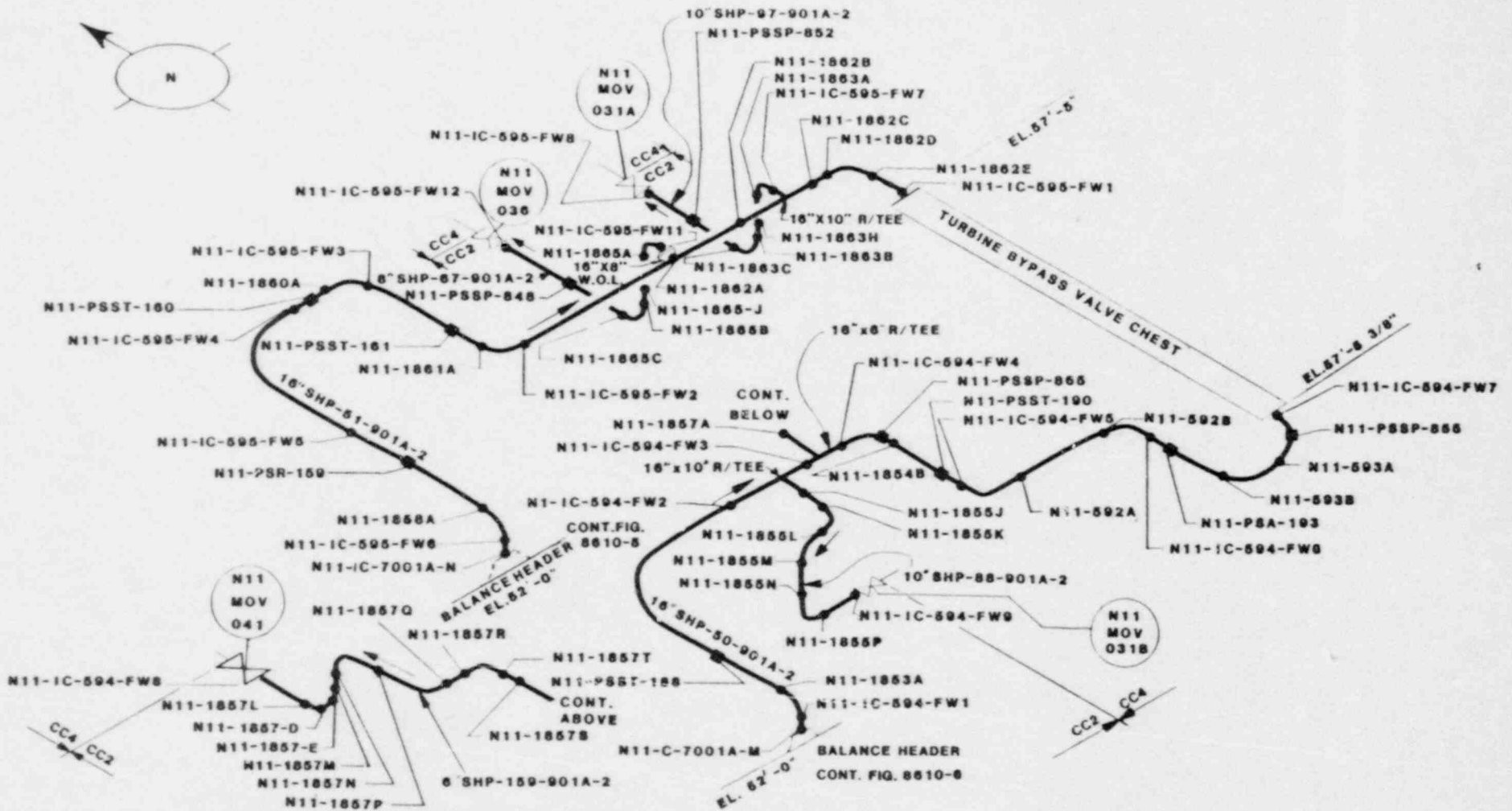
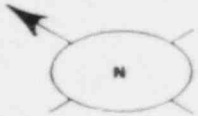
REF. DWGS.
 1C-142/10AB
 1C-143/9AB
 C-7001A
 S&W PIPE STRESS WORK
 SKETCH AX-25A

nes NUCLEAR ENERGY SERVICES	
SYSTEM NO N11	TITLE MAINSTEAM CLASS 2 LOOPS 1&2
REV 1	FIG. NO. 8610-5
BY: CAJ	DATE: 1-13-84
APP: AK	DATE: 4/84
PROJECT: SHOREHAM	
NOT TO SCALE	



REF. DWGS.
 IC-554/8AB
 IC-144/9AB
 C-7001A
 S&W PIPE STRESS
 WORK SKETCH AX-25A

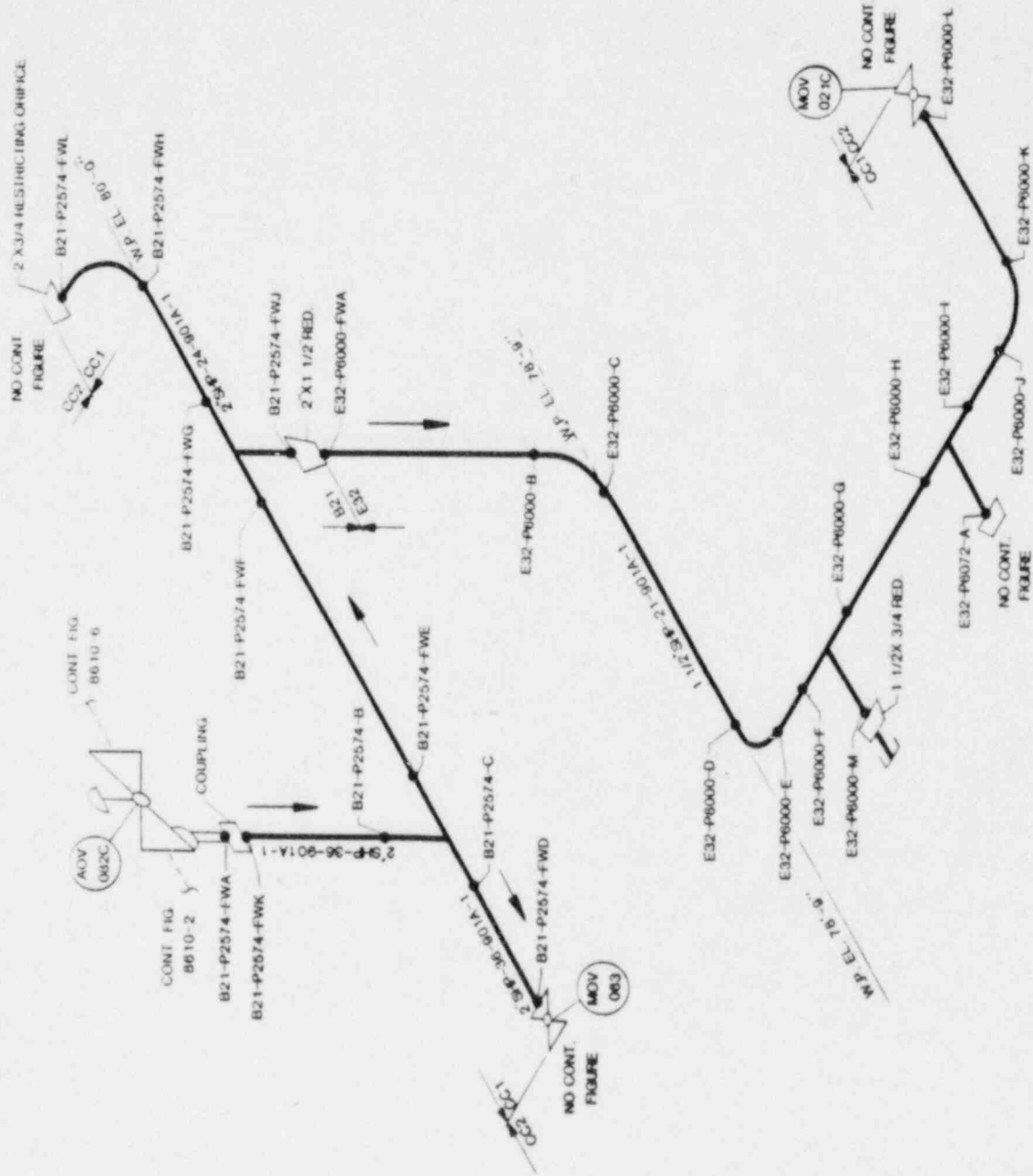
nes NUCLEAR ENERGY SERVICES	
SYSTEM NO. N11	TITLE MAIN STEAM CLASS 2, LOOPS 3&4
REV 1	FIG NO 8810-6
BY JEC DATE 8-12-83	APP AL DATE 9/80
PROJECT SHOREHAM	
NOT TO SCALE	



REF. DWGS.

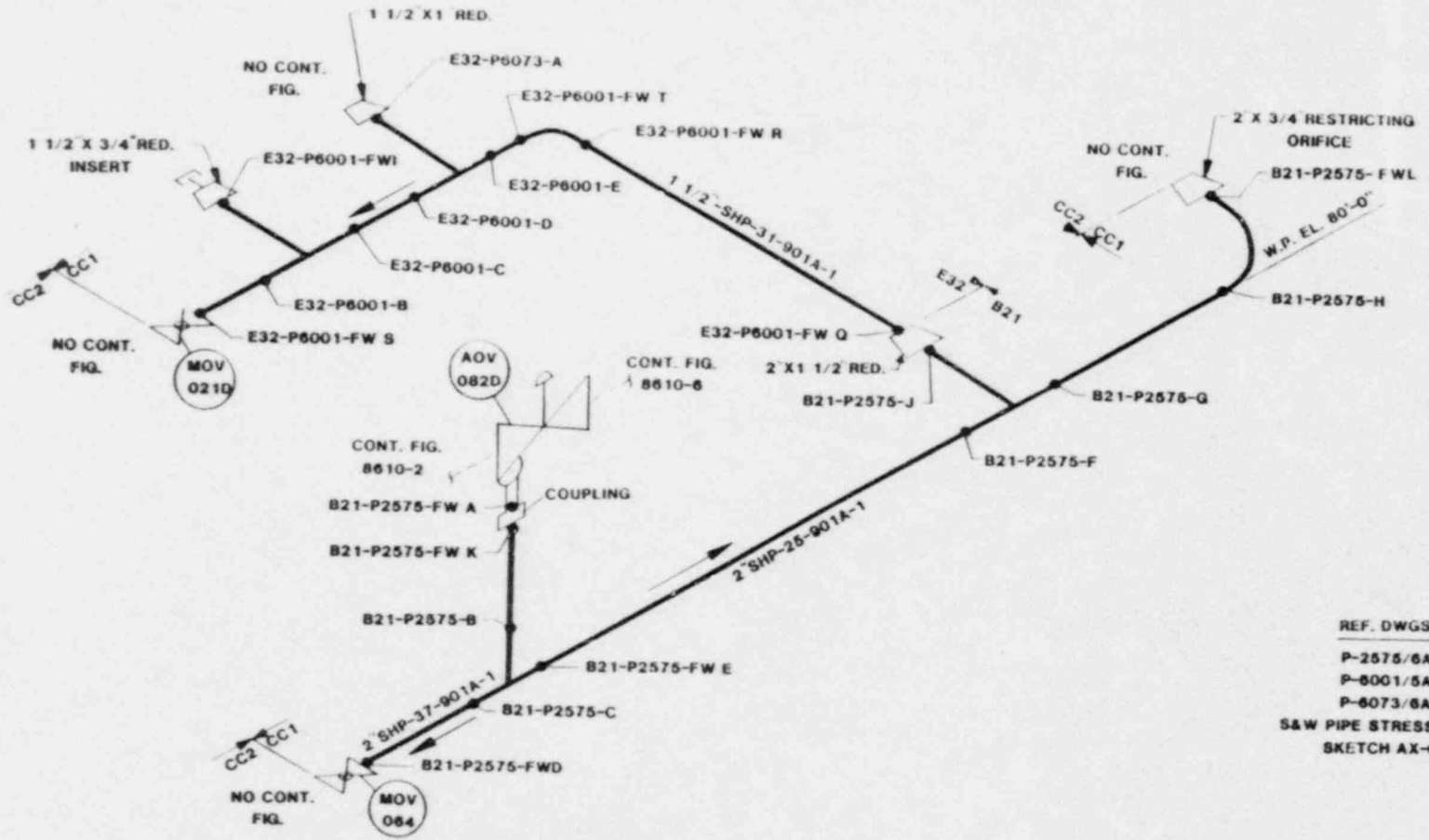
IC-594/7AB
 IC-595/8AB
 C-7001A

nes NUCLEAR ENERGY SERVICES	
SYSTEM NO. N11	TITLE MAIN STEAM CLASS 2
REV. 1	FIG. NO. 8610-7
BY <i>EMC</i>	DATE 11/1/77
CHK <i>WJF</i>	DATE 12/1/83
PROJECT SHOREHAM	
NOT TO SCALE	



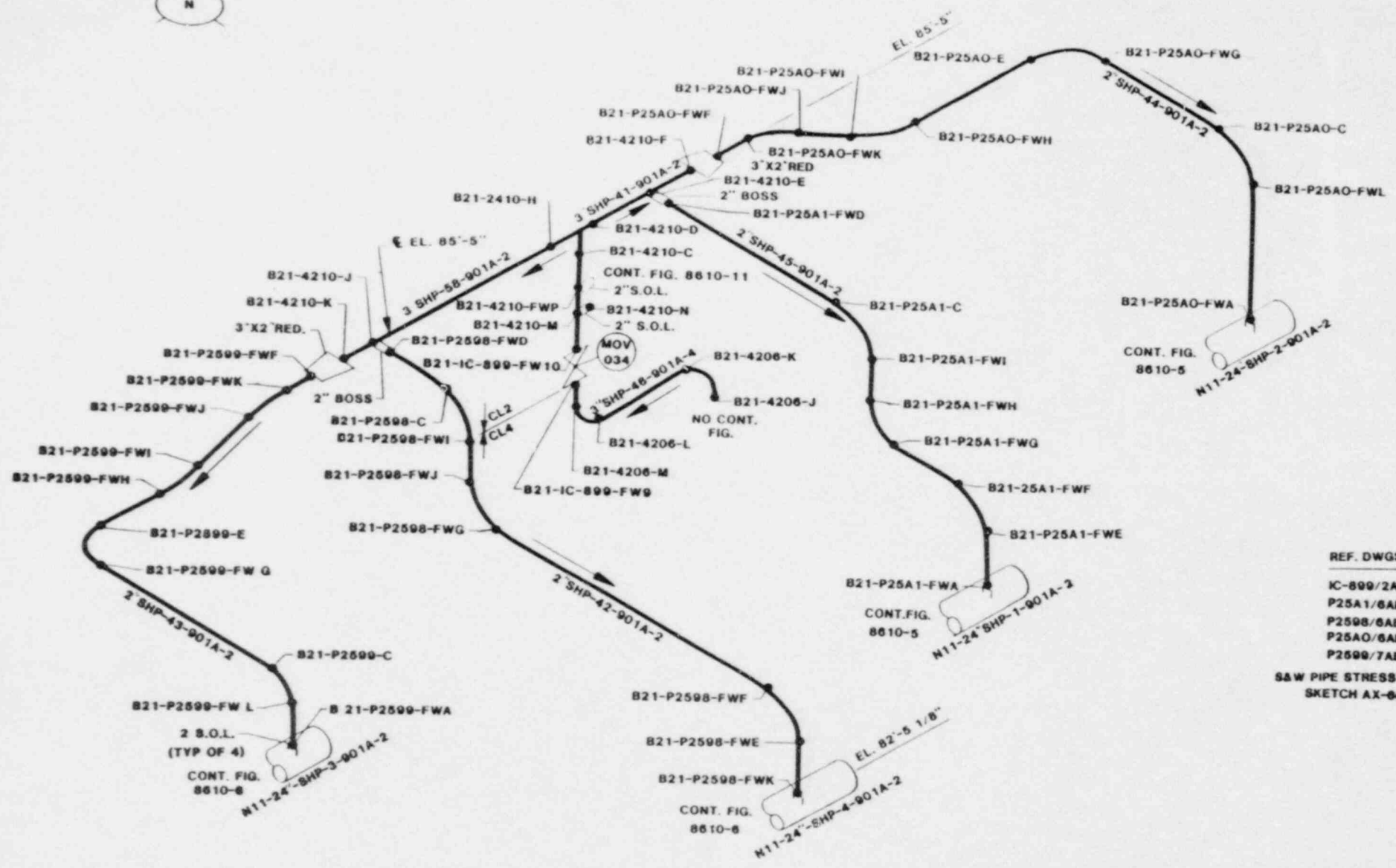
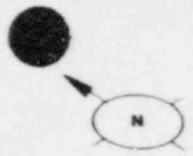
REF DWGS
 P2574/5AB
 P6000/4
 P6072/5
 S&W PIPE STRESS WORK
 SKETCH AX-60A

nps		NUCLEAR ENERGY SERVICES	
SYSTEM NO	B21	TITLE	MAIN STEAM BREAK EXCLUSION
REV	0	FIG NO	8610-8
BY	EC	DATE	8-30-83
APP	[Signature]	DATE	1-19-87
PROJECT	SHORHAM		
		NOT TO SCALE	



REF. DWGS.
 P-2575/6AB
 P-6001/5AB
 P-6073/6AB
 S&W PIPE STRESS WORK
 SKETCH AX-60B

nes NUCLEAR ENERGY SERVICES	
SYSTEM NO. B21 E32	TITLE MAIN STEAM BREAK EXCLUSION
REV. 0	FIG. NO. 8610-9
BY JES	DATE 8-26-83
APP. [Signature]	DATE 12/1/83
PROJECT	SHOREHAM
NOT TO SCALE	

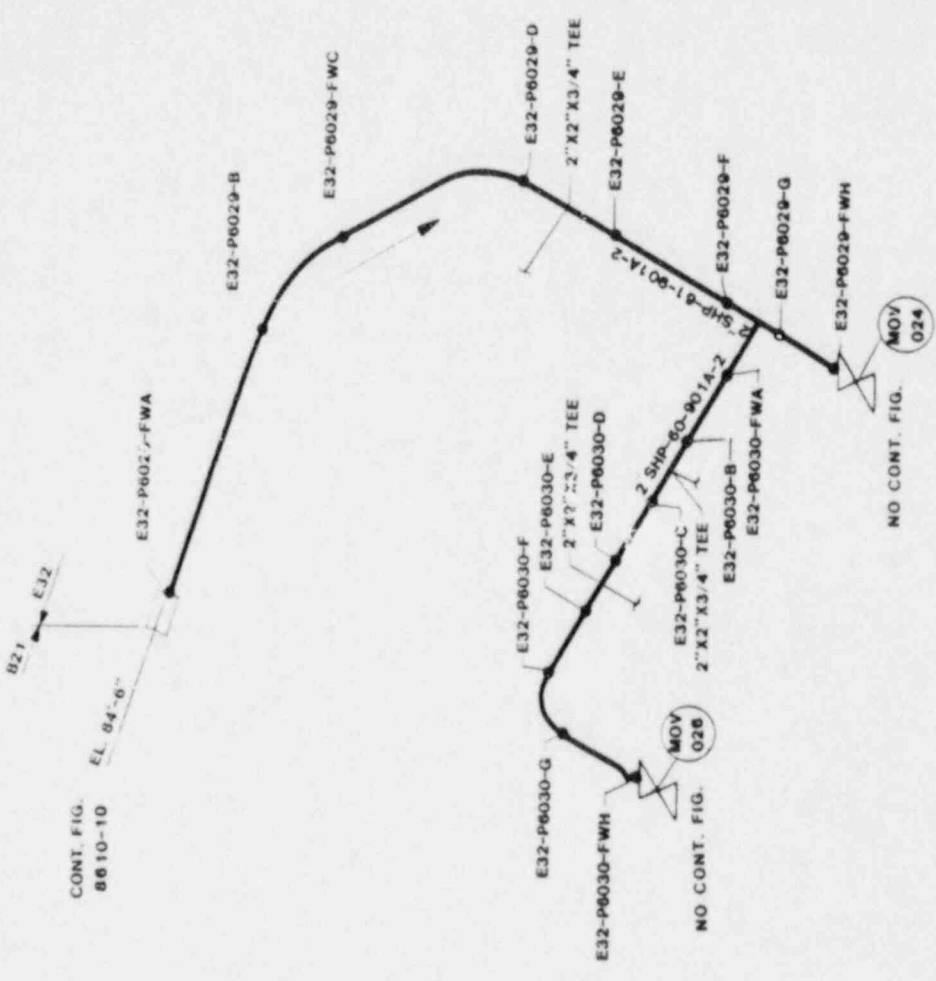


REF. DWGS.

- IC-899/2AB
- P25A1/6AB
- P2598/6AB
- P25AO/6AB
- P2599/7AB

S&W PIPE STRESS WORK
SKETCH AX-80D

nes NUCLEAR ENERGY SERVICES	
SYSTEM NO. B21	TITLE MAIN STEAM BREAK EXCLUSION
REV. 0	FIG. NO. 8610-10
BY <i>EE</i>	DATE <i>8-27-85</i>
APP <i>2/2</i>	DATE <i>1-3-86</i>
PROJECT SHOREHAM	
NOT TO SCALE	



CONT. FIG.
8610-10

EL. 84'-6"

B21 E32

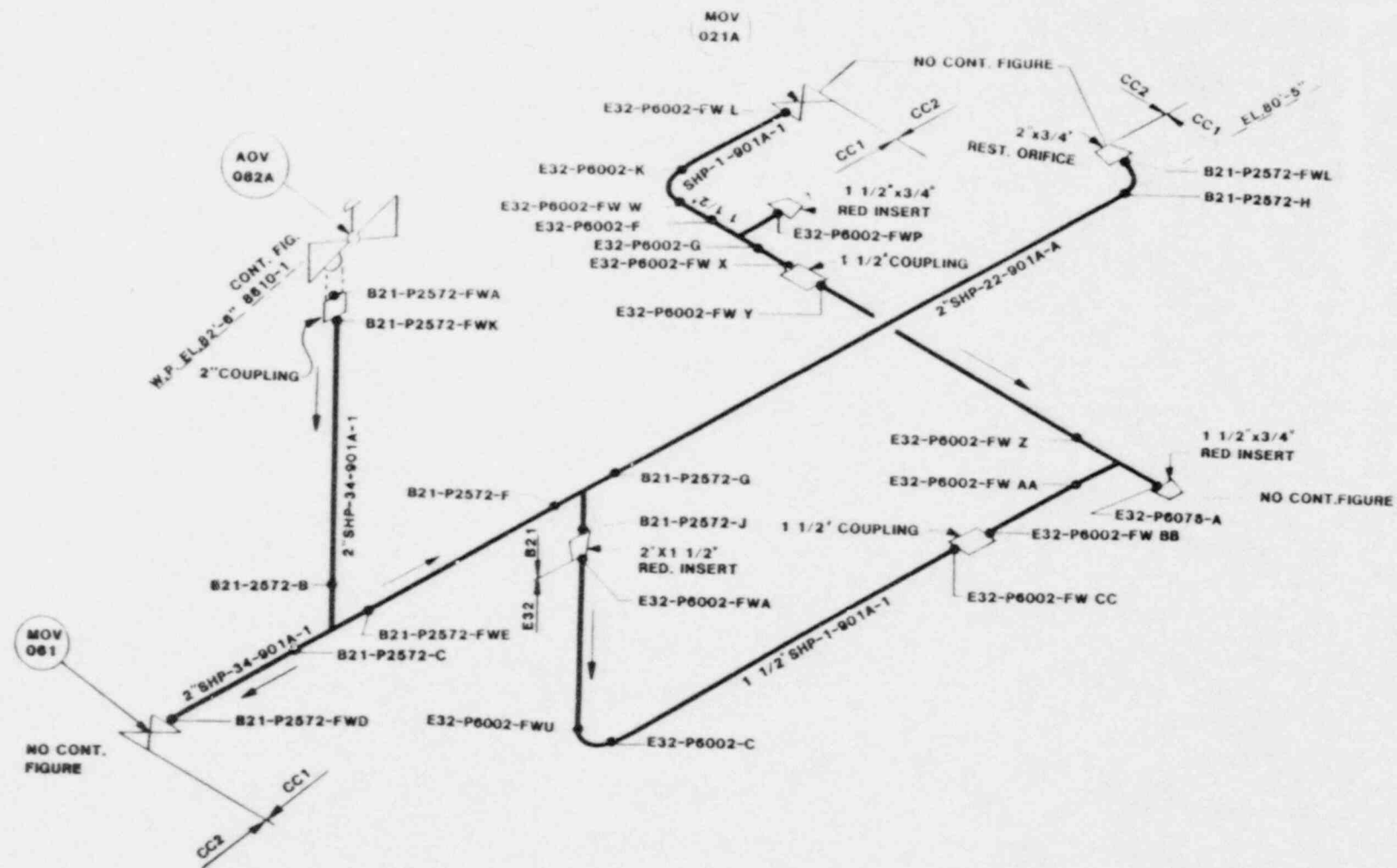
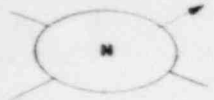


NO CONT. FIG.

NO CONT. FIG.

REF. DWGS.
P6029/6
P6030/8AB

1125		NUCLEAR ENERGY SERVICES	
SYSTEM NO.	E32	TITLE	MAIN STEAM BREAK EXCLUSION
REV.	0	FIG. NO.	8610-11
BY	JEC	DATE	05 27 80
APP.	JEP	DATE	11 13 84
PROJECT	SHOREHAM		
		NOT TO SCALE	

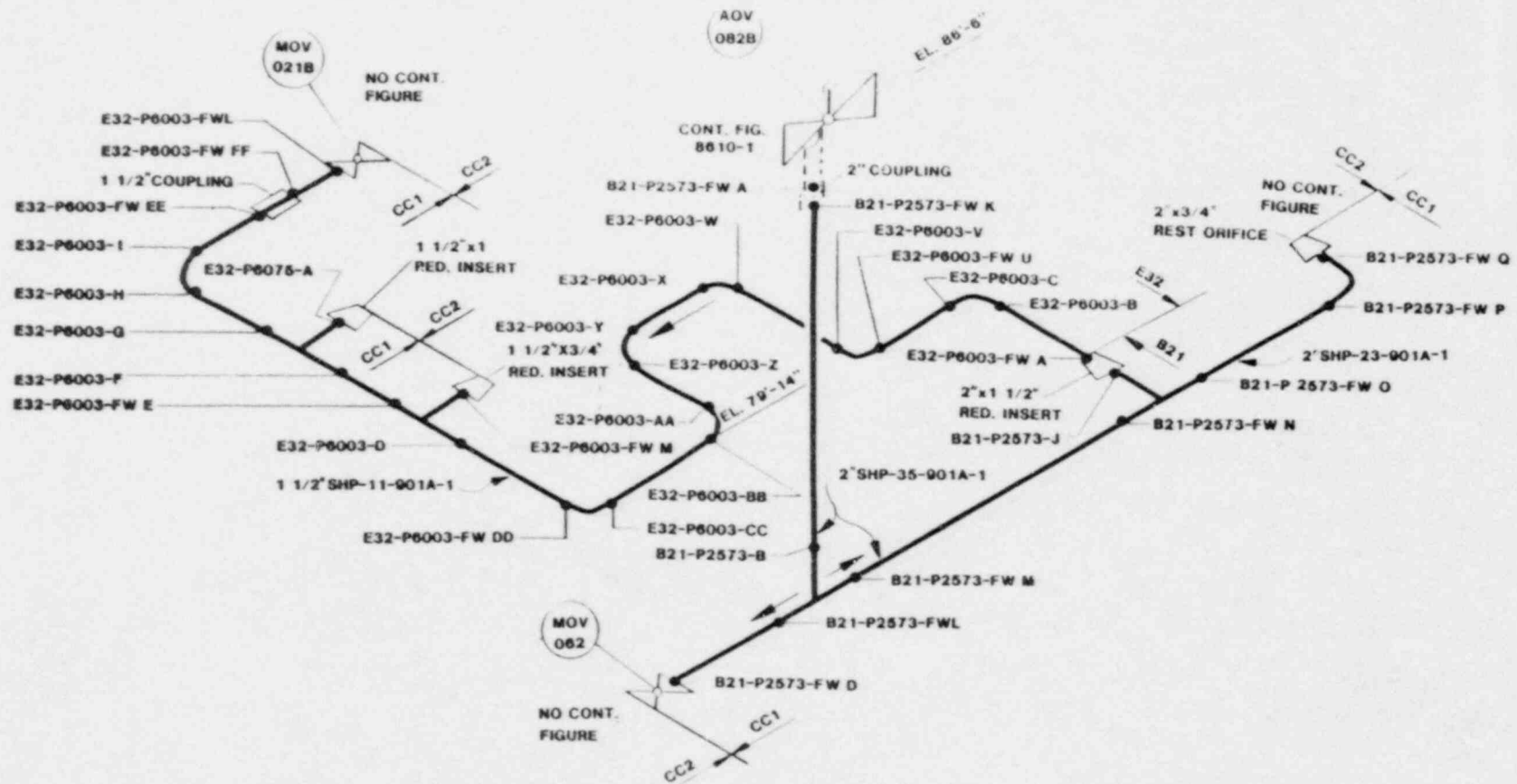
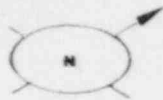


REF DWGS.

- P2572-5AB
- P6002-6AB
- P6078-6AB

S&W PIPE STRESS
WORK SKETCH AX-60E

nes NUCLEAR ENERGY SERVICES	
SYSTEM NO B21	TITLE MAIN STEAM
E32	BREAK EXCLUSION
REV 0	FIG NO 8610-12
BY [Signature] APP [Signature]	DATE [Date] DATE [Date]
PROJECT SHOREHAM	
NOT TO SCALE	



REF DR'WGS.

P-6003-8AB
 P-6075-8AB
 P-2573-5AB

S&W PIPE STRESS
 WORK SKETCH AX-60F

nes NUCLEAR ENERGY SERVICES	
SYSTEM NO. E32 B21	TITLE MAIN STEAM BREAK EXCLUSION
REV 0	FIG NO 8610-13
BY: LFC APP: <i>[Signature]</i>	DATE: 11/25/81
PROJECT SHOREHAM	
NOT TO SCALE	

***SYSTEM
BOUNDARY DIAGRAMS***

**OVERSIZE
DOCUMENT
PAGE PULLED**

SEE APERTURE CARDS

NUMBER OF OVERSIZE PAGES FILMED ON APERTURE CARDS

1

**APERTURE CARD/HARD COPY AVAILABLE FROM RECORD SERVICES BRANCH
FTS 492-8989**