



ITT Fluid Technology Corporation

Barton

900 South Turnbull Canyon Road
P.O. Box 1882
City of Industry, CA 91749-1882
Telephone: (818) 961-2547
Telex 67-7475

Roger F. Murphy
General Manager

November 21, 1991

U.S. Nuclear Regulatory Commission
Washington, D.C. 20555

Attn: Director, Office of Nuclear Material and Safeguards

Subject: Report of Potential Defect

ITT Barton is a supplier of basic components to the nuclear power industry. The specific components being reported are our Model 763 and 763A Static Pressure Transmitters.

This report is being submitted as a result of a Management Evaluation Report received from Wolf Creek, which describes their analysis of a failure during plant operation. A review has been conducted by Barton Engineering which substantiates the findings reported.

The reported failure was the result of a short circuit of a connector pin to an adjacent mounting screw (see attached sketch). The pin would normally be clipped off during manufacturing to avoid a short. However, documentation was not updated to reflect this requirement.

Engineering drawings and manufacturing work instructions are being changed to provide clear direction to clip the connector pin and to inspect the pin upon completion. Existing stock will be purged to assure implementation of these changes. Instructions will be provided to all users for correction of the deficiency in delivered instruments. All of these actions will be completed by December 20, 1991.

A list of customers and the serial numbers of products which could be affected will be provided by December 5, 1991. Information will be provided to all customers with instructions for inspection to determine if corrective action is required.

Sincerely,

Roger F. Murphy
General Manager

RFM:sc

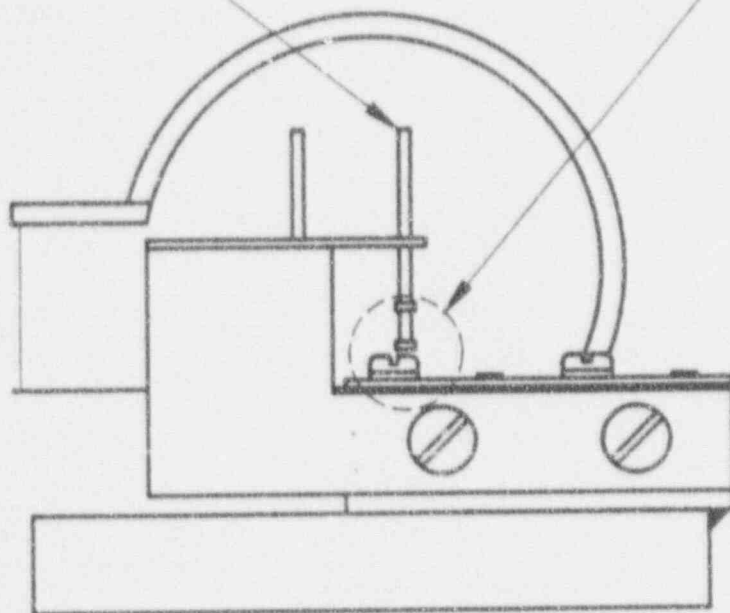
9112050015 911121
PDR ADOCK 05000482
S PLR

Cent No
P126A377B1
TE19
11

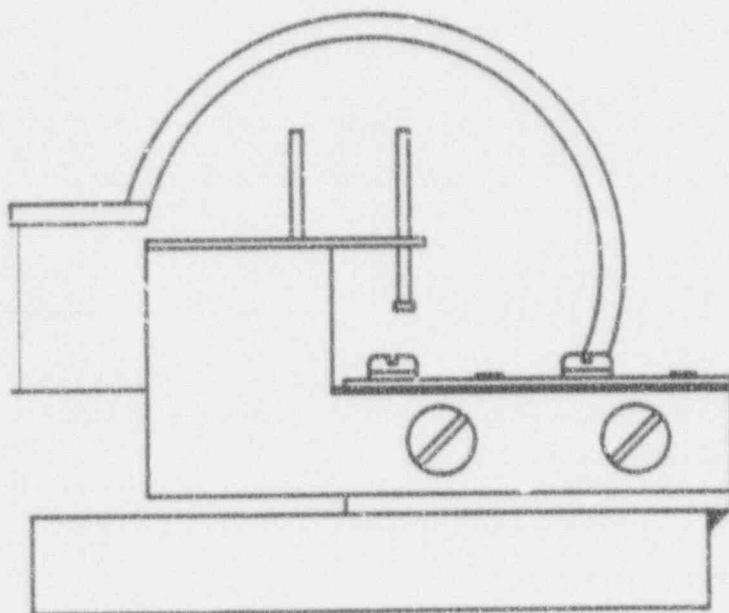
MODEL 763/763A GAGE PRESSURE TRANSMITTER

CONNECTOR
PIN

AREA OF
POTENTIAL
SHORT



IS: POTENTIAL INTERFERENCE OF UNCLIPPED CONNECTOR
PIN WITH SCREW HEAD



SHOULD BE: CLIPPED CONNECTOR PIN