

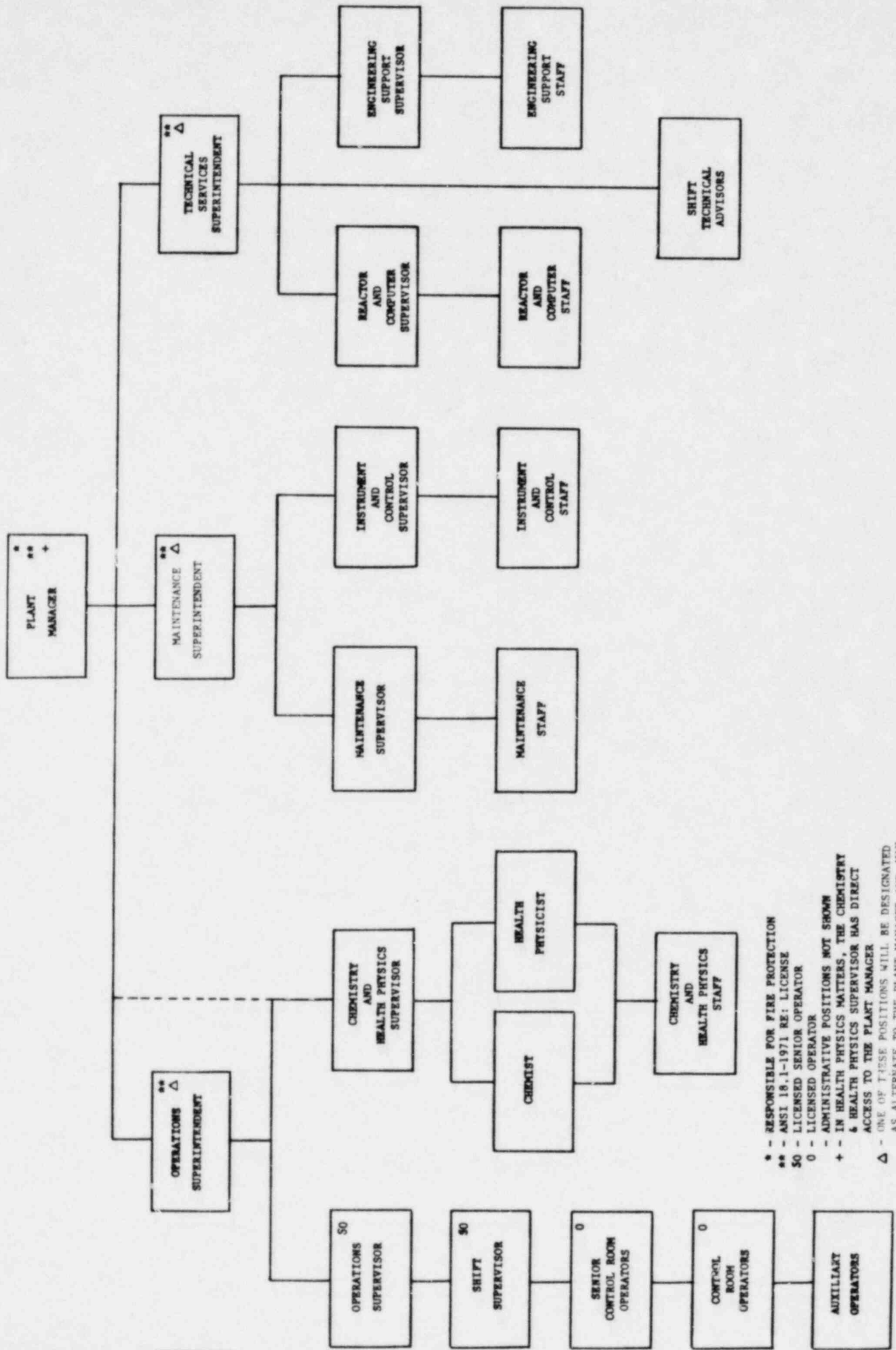
6.0 ADMINISTRATIVE CONTROLS

Administrative controls are the written rules, orders, instructions, procedures, policies, practices, and the designation of authorities and responsibilities by the management to obtain assurance of safety and quality of operation and maintenance of a nuclear power reactor. These controls shall be adhered to.

6.1 ORGANIZATION

- A. The Plant Manager has on-site responsibility for the safety and efficient operation of the facility. Succession to this responsibility during his absence shall be delegated in writing.
- B. The portion of the corporate management which relates to the operation of this plant is shown in Figure 6.1.1.
- C. In all matters relating to the operation of the plant and to those Technical Specifications, the Plant Manager shall report to and be directly responsible to the Manager of Operations.
- D. Conduct of operations of the plant is shown in Figure 6.1.2 and will be in accordance with the following minimum conditions (see Table 6.1.1).
1. A licensed Senior Operator and an individual qualified in radiation protection procedures shall be present on-site at all times when there is fuel in the reactor.
 2. Licensed Operators on-site shall be in accordance with Table 6.1.1, one of which must be in the Control Room at all times when fuel is in the reactor.
 3. A licensed Senior Operator shall be in charge of any refueling operation.
 4. Qualifications with regard to educational background experience, and technical specialities of the key supervisory personnel listed below shall apply and be maintained in accordance with the levels described in the American National Standards Institute N18.1-1971, "Selection and Training of Personnel for Nuclear Power Plants".

<ol style="list-style-type: none"> a. Plant Manager b. Operations Superintendent c. Technical Services Superintendent d. Maintenance Superintendent e. Chemistry and Health Physics Supervisor 	<ol style="list-style-type: none"> f. Operations Supervisor g. Reactor and Computer Supervisor h. Maintenance Supervisor i. Instrument and Control Supervisor j. Shift Supervisors
---	---



- * - RESPONSIBLE FOR FIRE PROTECTION
- ** - ANSI 18.1-1971 RE: LICENSE
- SO - LICENSED SENIOR OPERATOR
- O - LICENSED OPERATOR
- ADMINISTRATIVE POSITIONS NOT SHOWN
- + - IN HEALTH PHYSICS MATTERS, THE CHEMISTRY & HEALTH PHYSICS SUPERVISOR HAS DIRECT ACCESS TO THE PLANT MANAGER
- Δ - ONE OF THESE POSITIONS WILL BE DESIGNATED AS ALTERNATE TO THE PLANT MANAGER AND MAY BE RETITLED ASSISTANT PLANT MANAGER

ORGANIZATIONAL CHART

FIGURE 6.1.2

6.2 REVIEW AND AUDIT

Organizational units for the review and audit of plant operations shall be constituted and have the responsibilities and authorities outlined below:

A. Plant Operations Review Committee

1. Membership

- a. Chairman: Plant Manager
- b. Vice-Chairman: Operations Superintendent
- c. Vice-Chairman: Technical Services Superintendent
- d. Vice-Chairman: Maintenance Superintendent
- e. Engineering Support Supervisor
- f. Operations Supervisor
- g. Maintenance Supervisor
- h. Reactor and Computer Supervisor
- i. Chemistry and Health Physics Supervisor
- j. Instrument and Control Supervisor
- k. Health Physicist

2. Qualifications

The qualifications of the regular members of the Plant Operations Review Committee with regard to the combined experience and technical specialties of the individual members shall be maintained at a level at least equal to or higher than as described in Specification 6.1.

3. Meeting Frequency: Monthly, and as required, on call of the Chairman.

4. Quorum: Chairman or Vice-Chairman plus four members or their designated alternates.

NOTE: For purposes of satisfying a quorum, a Vice-Chairman may be considered a member providing that Vice-Chairman is not presiding over the meeting.