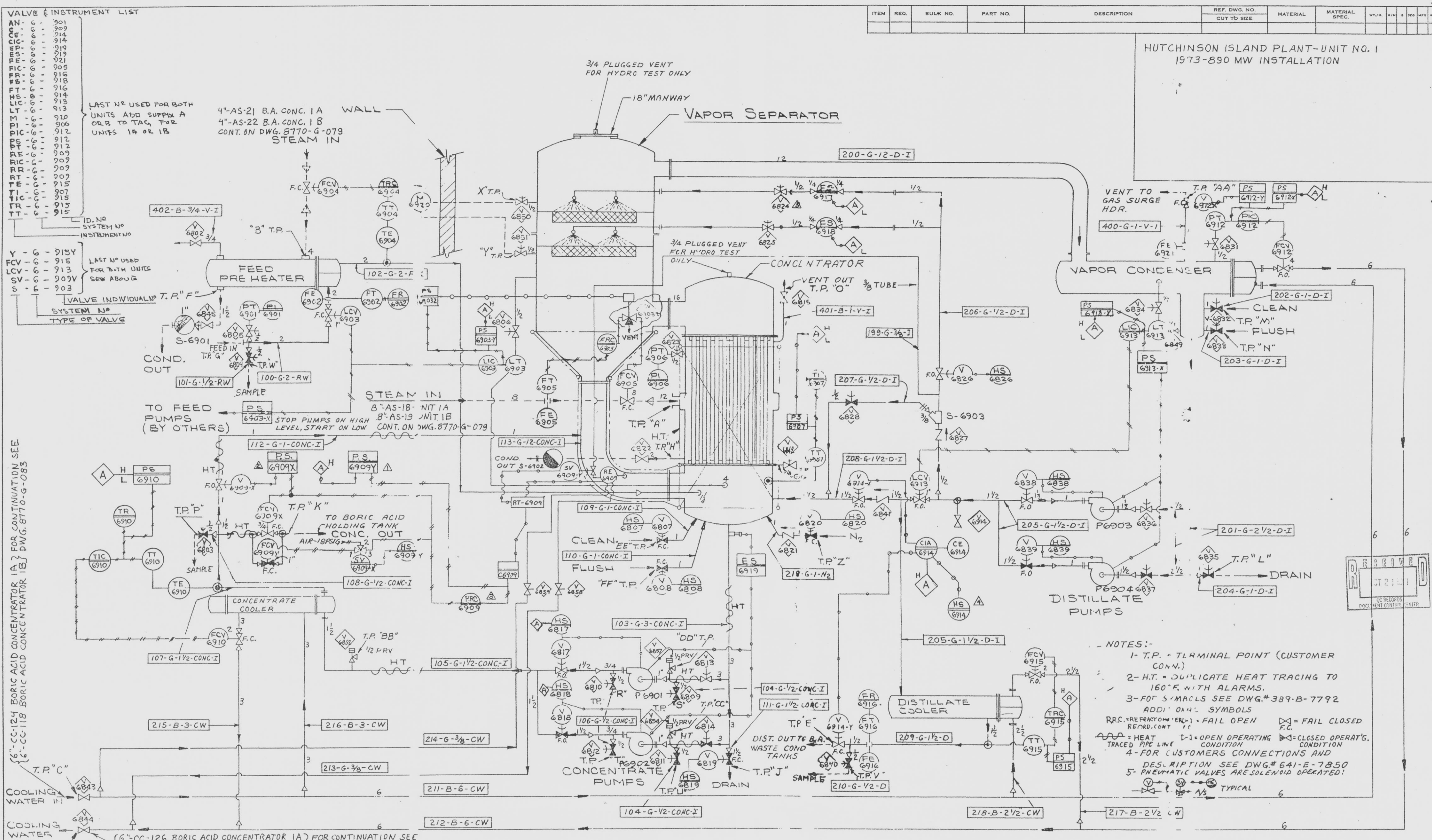


HUTCHINSON ISLAND PLANT - UNIT NO. 1  
1973-890 MW INSTALLATION



ITEM	REQ.	BULK NO.	PART NO.	DESCRIPTION	REF. DWG. NO.	MATERIAL	MATERIAL SPEC.	WT. LB.	QTY.	REV.	DATE
------	------	----------	----------	-------------	---------------	----------	----------------	---------	------	------	------

VALVE & INSTRUMENT LIST

SYMBOL	DESCRIPTION	NO.
AN	AND	901
AN	AND	902
AN	AND	903
AN	AND	904
AN	AND	905
AN	AND	906
AN	AND	907
AN	AND	908
AN	AND	909
AN	AND	910
AN	AND	911
AN	AND	912
AN	AND	913
AN	AND	914
AN	AND	915
AN	AND	916
AN	AND	917
AN	AND	918
AN	AND	919
AN	AND	920
AN	AND	921
AN	AND	922
AN	AND	923
AN	AND	924
AN	AND	925
AN	AND	926
AN	AND	927
AN	AND	928
AN	AND	929
AN	AND	930
AN	AND	931
AN	AND	932
AN	AND	933
AN	AND	934
AN	AND	935
AN	AND	936
AN	AND	937
AN	AND	938
AN	AND	939
AN	AND	940

LAST NO USED FOR BOTH UNITS AND SUPPLY A OR B TO VAL. FOR UNITS 1A OR 1B

4" AS-21 B.A. CONC. 1A  
4" AS-22 B.A. CONC. 1B  
CONT. ON DWG. 8770-G-079

WALL

STEAM IN

TO FEED PUMPS (BY OTHERS)

STOP PUMPS ON HIGH LEVEL, START ON LOW

CONC. OUT

SAMPLE

TO BORIC ACID HOLDING TANK CONC. OUT

6" CC-124 BORIC ACID CONCENTRATOR 1A FOR CONTINUATION SEE DWG 8770-G-083

6" CC-118 BORIC ACID CONCENTRATOR 1B FOR CONTINUATION SEE DWG 8770-G-083

6" CC-126 BORIC ACID CONCENTRATOR 1A FOR CONTINUATION SEE DWG 8770-G-083

6" CC-119 BORIC ACID CONCENTRATOR 1B FOR CONTINUATION SEE DWG 8770-G-083

- NOTES:-
1. T.P. - TERMINAL POINT (CUSTOMER CONN.)
  2. H.T. - DUPLICATE HEAT TRACING TO 160°F. WITH ALARMS.
  3. F.O.T. SYMBOLS SEE DWG.# 389-B-7792
- ADD: O.A.U. SYMBOLS
- R.R.C. - RE-REACTOR TRAC. - FAIL OPEN ( )  
R.C.C. - RE-REACTOR TRAC. - FAIL CLOSED ( )
- TRACED PIPING LINE CONDITION: ( ) - OPEN OPERATING, ( ) - CLOSED OPERATING
4. FOR CUSTOMERS CONNECTIONS AND DESCRIPTION SEE DWG.# 641-E-7850
5. PNEUMATIC VALVES ARE SOLENOID OPERATED!
- AS TYPICAL

NO.	DESCRIPTION	DATE	BY	CHKD.
1	REVISED PIPING	11-15-77	...	...
2	...	...	...	...
3	...	...	...	...
4	...	...	...	...
5	...	...	...	...
6	...	...	...	...
7	...	...	...	...
8	...	...	...	...
9	...	...	...	...
10	...	...	...	...

THIS DRAWING IS THE PROPERTY OF AQUA-CHEM, INC. IT IS SUBJECT TO CHANGE WITHOUT NOTICE AND IS NOT TO BE COPIED OR USED IN ANY WAY DETRIMENTAL TO THE COMPANY.

**Aqua-Chem, Inc.**  
WALKERSHA, WISCONSIN

PIPEING & INSTRUMENT DIAGRAM, 1  
MODEL RV-1200-6P

DWG. NO. 627-D-8156

DATE: 11-15-77

BY: AUE  
CHKD: WBT

8770-14-1

FLORIDA POWER & LIGHT COMPANY

HUTCHINSON ISLAND PLANT

CONCENTRATOR 1A & 1B

DWG. NO. 627-D-8156

REVISED PIPING

940127007# 70