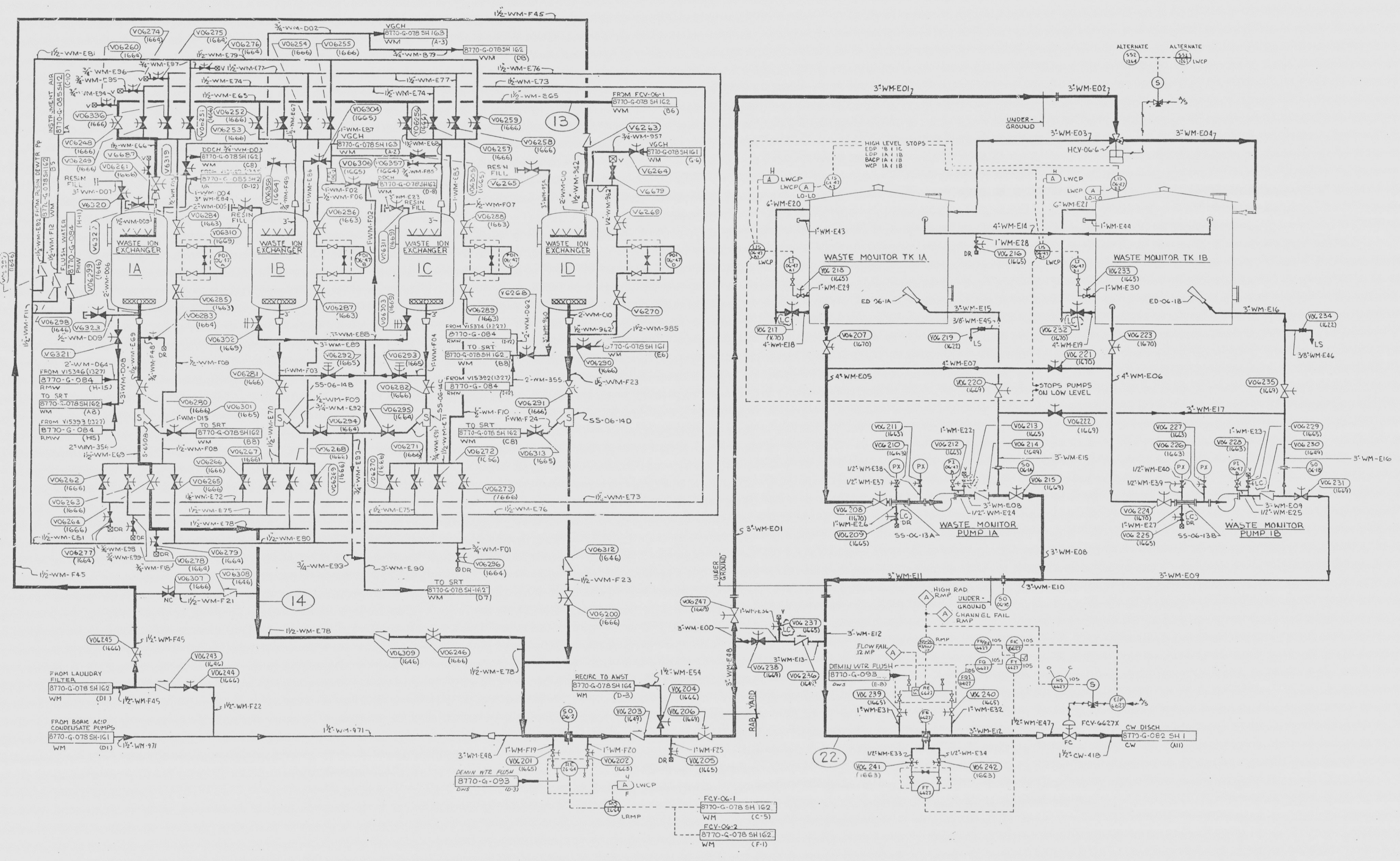


REVISIONS					
NO.	DATE	DESCRIPTION	BY	CHK	APPROVED
1	3/15/90	INITIAL ISSUE FROM 104-80 X 105-90	NA	NA	NA
2	4/11/91	REVISED @ ADDED (K1)	NA	NA	NA
3	4/11/91	REVISED @ ADDED (K1)	NA	NA	NA
4	6/15/91	REVISED @ ADDED (K1)	NA	NA	NA
5	9/14/93	REVISED @ ADDED (K1)	NA	NA	NA
6	8-31-94	REVISED @ ADDED (K1)	NA	NA	NA
7	10/1/94	REVISED @ ADDED (K1)	NA	NA	NA
8	4/14/95	REVISED @ ADDED (K1)	NA	NA	NA



- NOTES:
- 1 FOR SYMBOLS, ABBREVIATIONS AND REFERENCES DWGS SEE DWS 8770-G-078 SH 103
  - 2 FOR ADDITIONAL WASTE MANAGEMENT SHEETS SEE DWGS 8770-G-078 SH 160, 161, 162, 163 & 164
  - 3 LOCAL ALARMS ARE GROUPED ON A LOCAL PANEL. THE LOCAL PANEL HAS AN ANNUNCIATOR ON THE CONTROL ROOM PANEL.
  - 4 ALL PIPING IS OF QUALITY GROUP "D"
  - 5 FOR PUMP VENTS & DRAINS, SEE 8770-G-078 SH 105

REVISION OF THIS DRAWING MAY REQUIRE UPDATE OF THE FOLLOWING DOCUMENTS:  
A. FSAR FOR 104-80 X 105-90

DESIGN INFORMATION FOR THE CHANGED SPON IN THIS DIVISION HAS BEEN ENGINEERED BY FLORIDA POWER & LIGHT COMPANY.

THIS DOCUMENT IS THE PROPERTY OF EBASCO SERVICES INCORPORATED. ITS USE IS EXPRESSLY RESTRICTED BY THE TERMS OF THE CONTRACT, DATED AS OF AUGUST 10, 1988 BETWEEN EBASCO SERVICES, INCORPORATED AND FLORIDA POWER & LIGHT COMPANY.

FLORIDA POWER & LIGHT COMPANY  
ST. LUCIE PLANT UNIT NO. 1  
FLOW DIAGRAM  
WASTE MANAGEMENT SYSTEM  
(SHEET-6)

SIZE	N/A	APPROVED	DATE
BY MECH		<i>[Signature]</i>	8/770-G-078
BY CAMPBELL		<i>[Signature]</i>	SHEET 165
BY PAGAN		<i>[Signature]</i>	165

9701270078-10

E