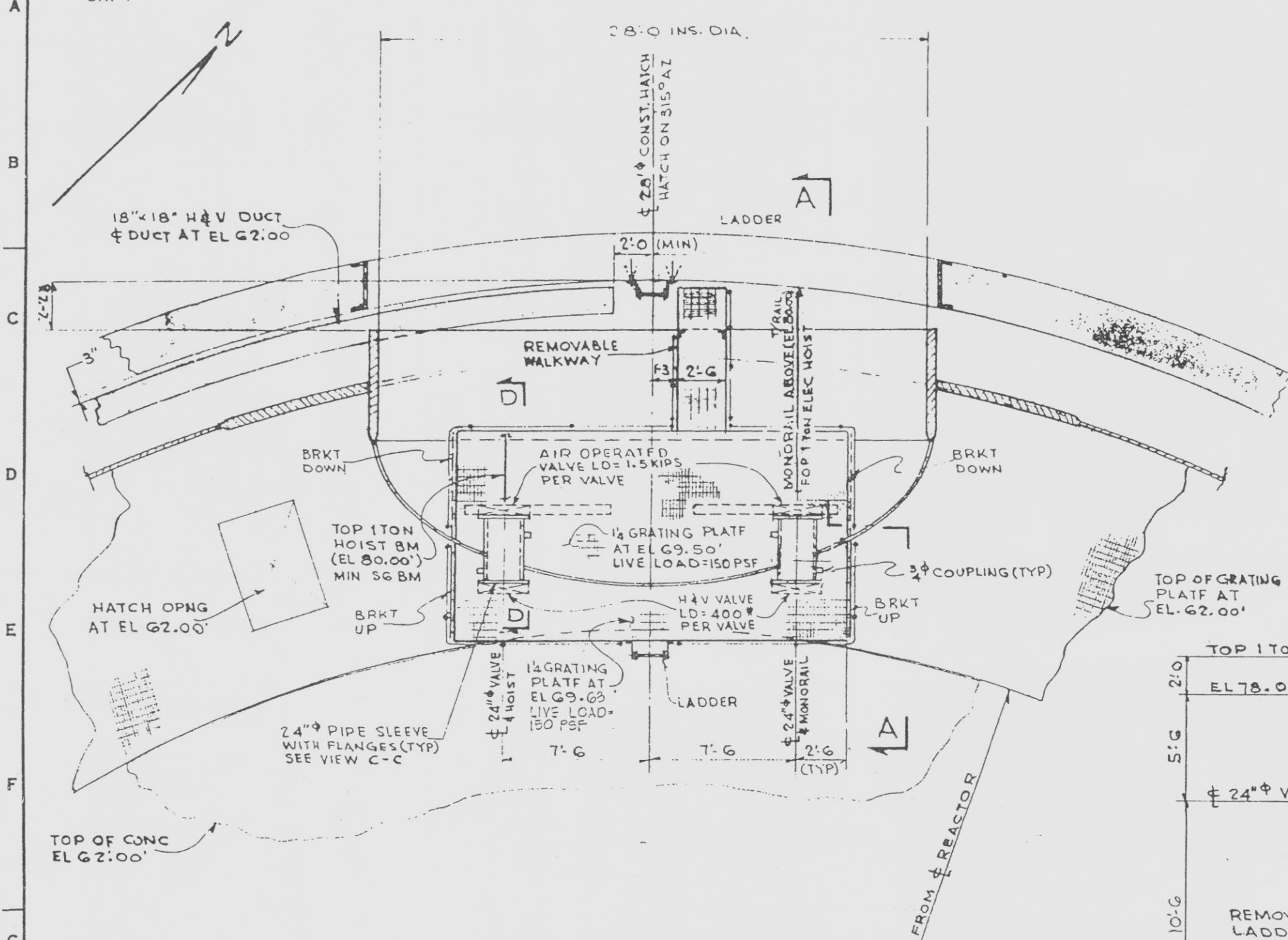
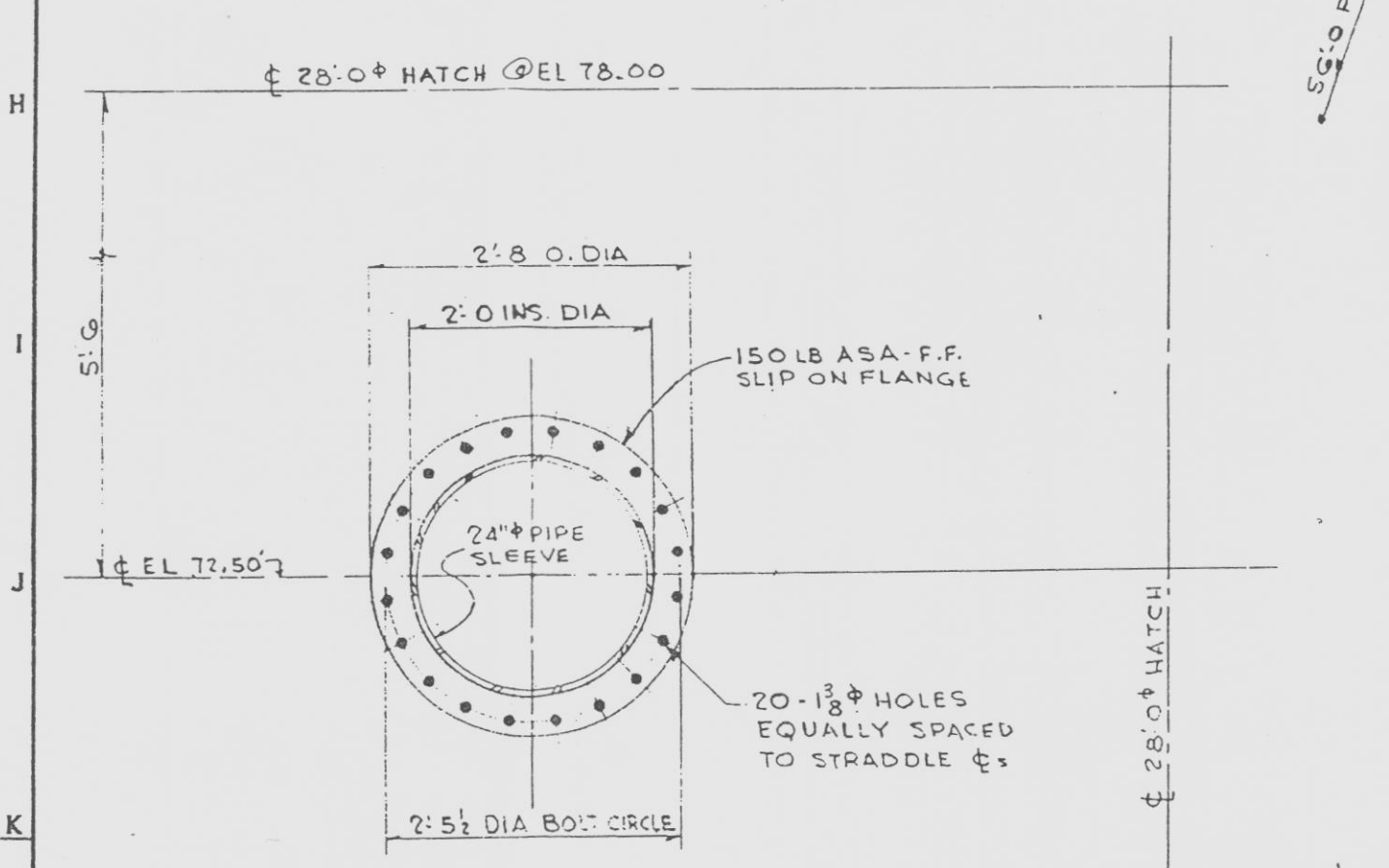


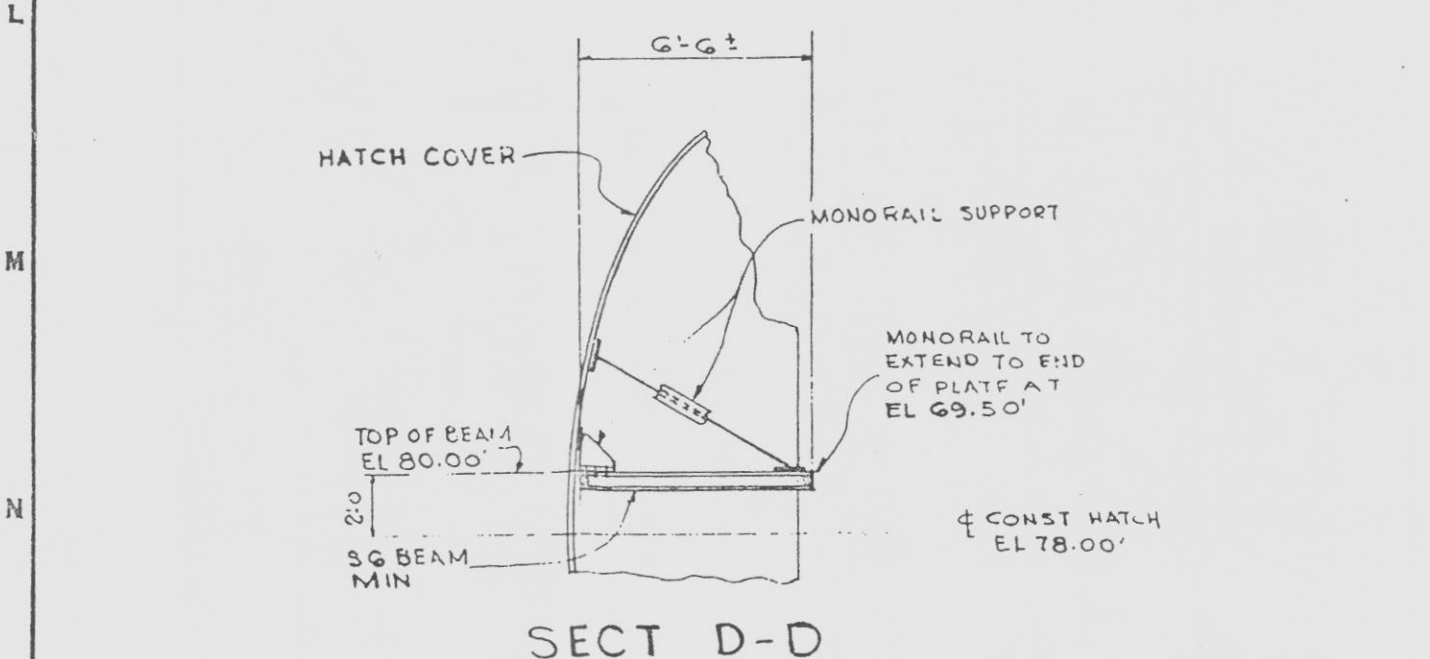
8770-G-793  
SH. 4



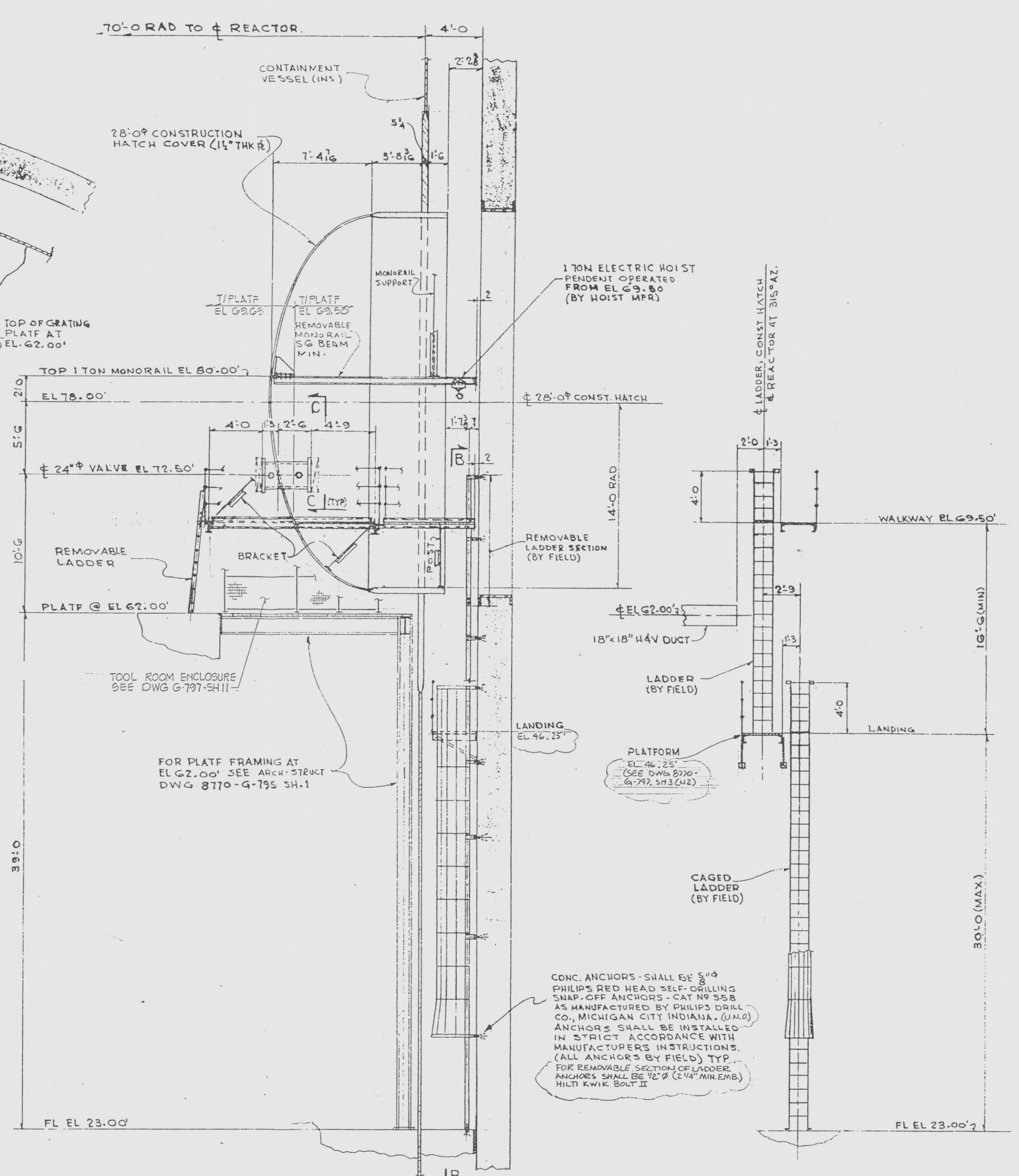
PLAN AT EL 9.50'  
VE LOAD = 100PSF (TYP UNLESS NOTED)



VIEW C-C (TYPICAL)  
(4 REQ'D)  
1'-1'-0"



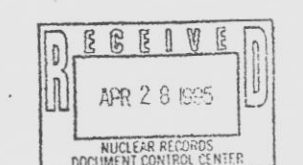
SECT D-D



SECT A-A

SECT B-B

NOTES:  
FOR NOTES AND REFERENCE DRAWINGS  
SEE DWG 8770-G-793 SH 2.  
ALL PLATFORMS, HOIST BEAMS, BRACKETS  
ETC. SHALL BE MADE REMOVABLE.



FLORIDA POWER & LIGHT CO.  
JPE  
POWER PLANT ENGINEERING

DRAWING TRANSFERRED  
TO FPL 1-24-86

WORK THIS DWG WITH 8770-G-793 SH 1, SH 2, & SH 3

THIS DOCUMENT IS THE PROPERTY OF EBASCO SERVICES INCORPORATED. ITS USE IS EXPRESSLY RESTRICTED BY THE TERMS OF THE CONTRACT, DATED AS OF AUGUST 10, 1968, BETWEEN EBASCO SERVICES INCORPORATED AND FLORIDA POWER & LIGHT COMPANY.

FLORIDA POWER & LIGHT COMPANY  
ST. LUCIE PLANT  
1973 - 890,000 KW INSTALLATION - UNIT NO. 1  
CONTAINMENT VESSEL SH. 4

NO.	DATE	REVISION	BY	CH	APPROVED
3	4/3/75	REV (L13) NOTE (13) NOTE PER DCR 56C-94-035	HTJ	SKL	
2	10-6-84	ADDED: (H9) TOOL ROOM REF PER PCM 48-80	RG	TKL	
1	11-9-77	"AS BUILT"	PG	SK	

EBASCO SERVICES INCORPORATED NEW YORK  
SCALE: 1/4" = 1'-0"  
DATE: 8-7-75  
DR. FARINA  
CH. WARRICK

8770-G-793 SH. 4

970/270078-11

E

8770-G-793  
SH. 4