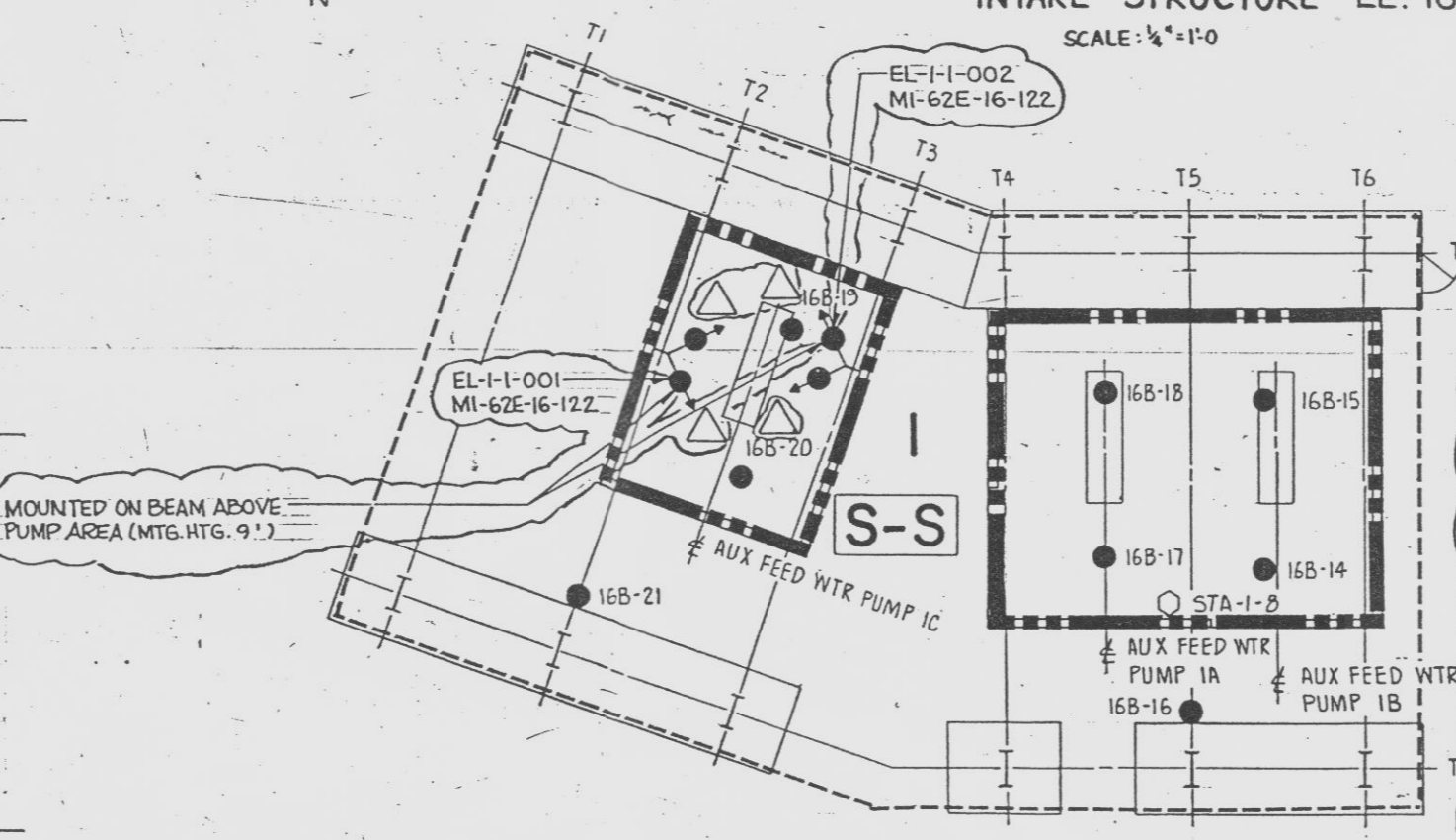
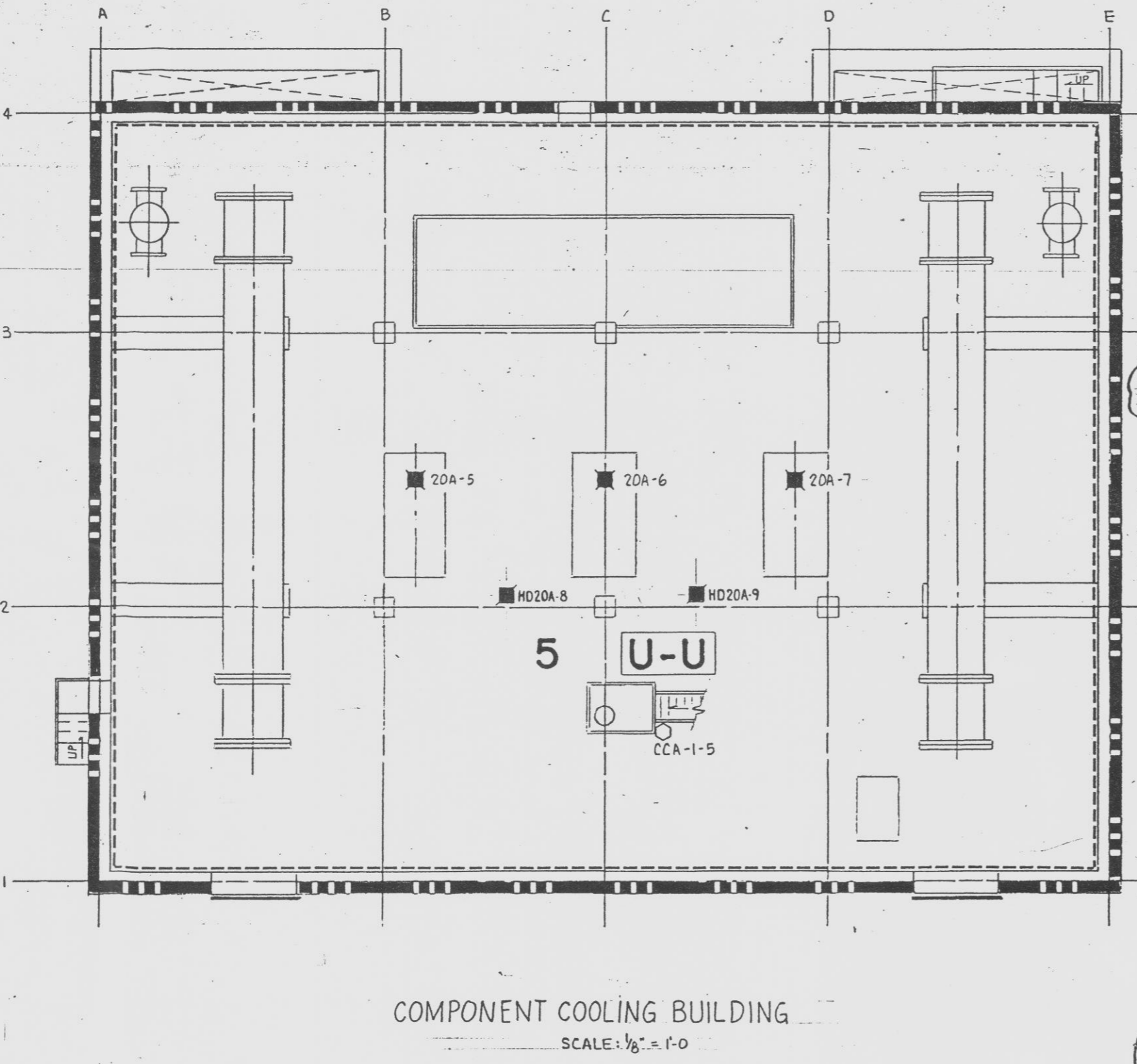
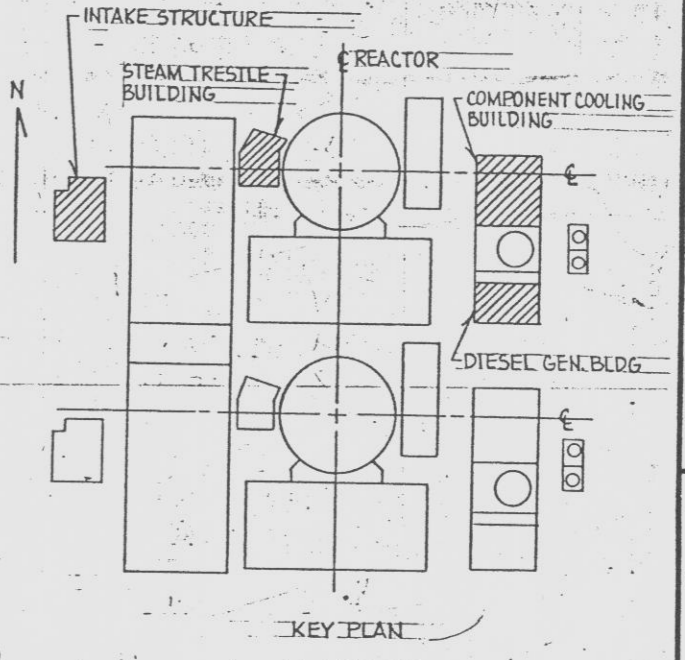
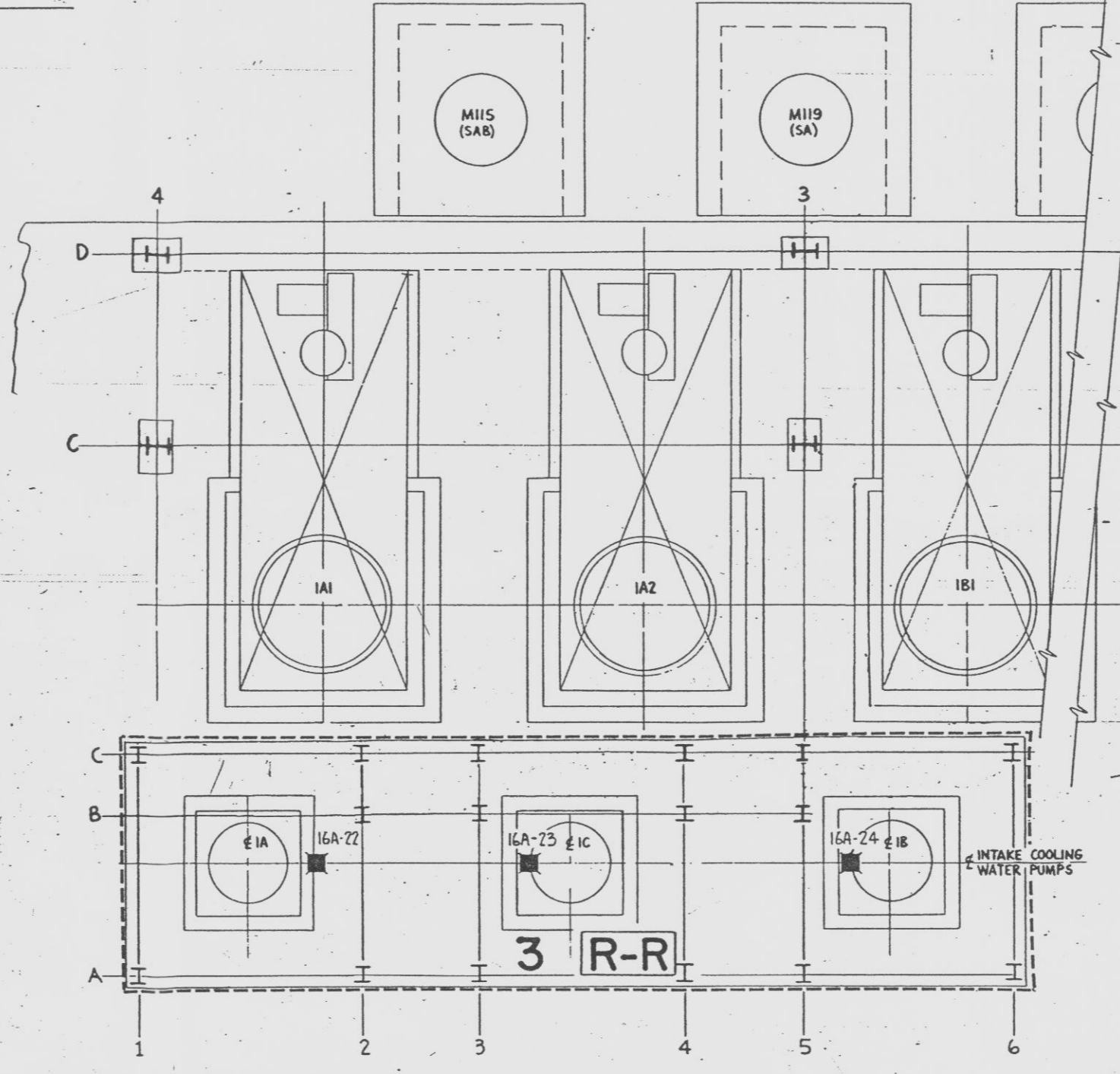
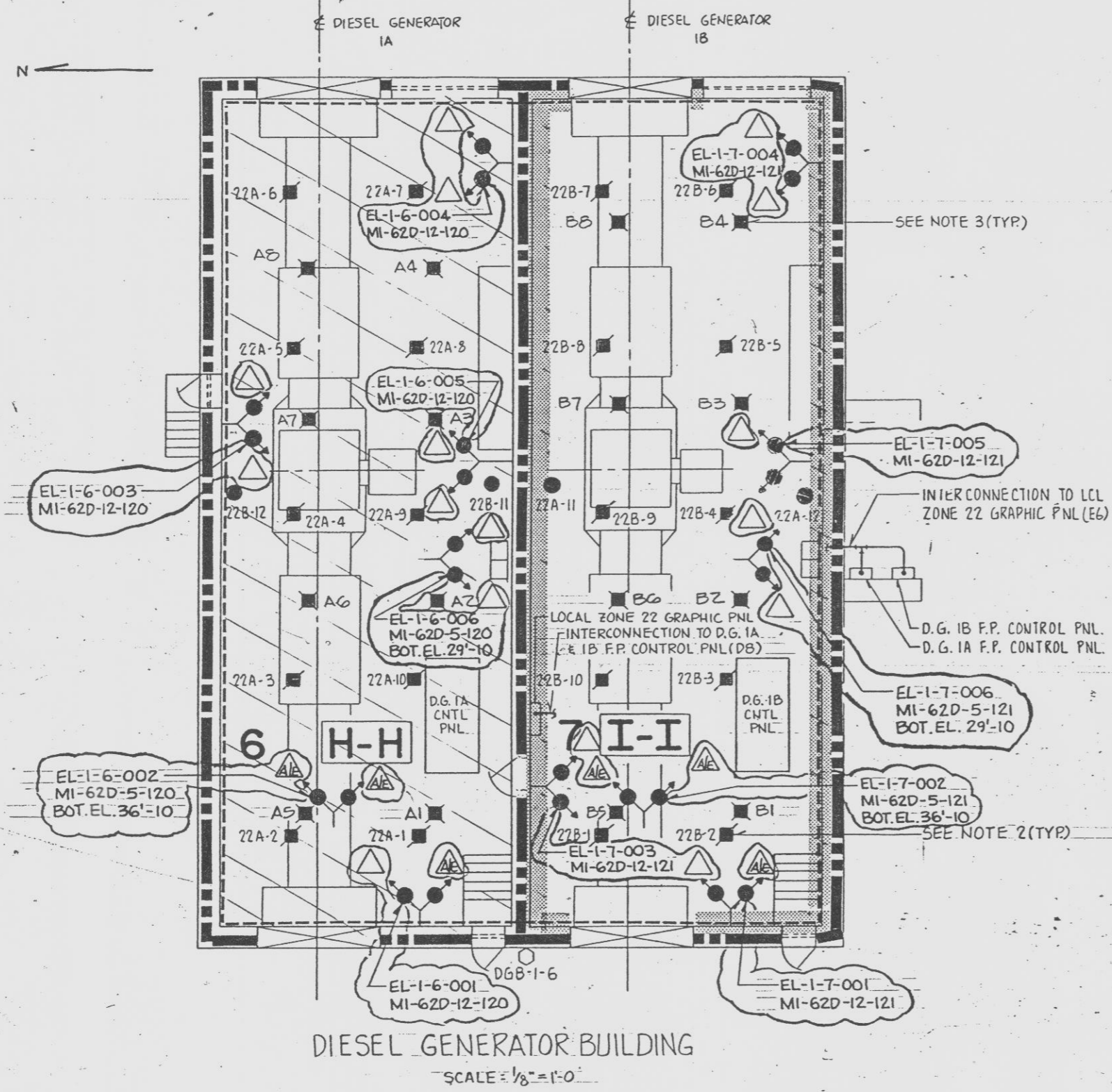


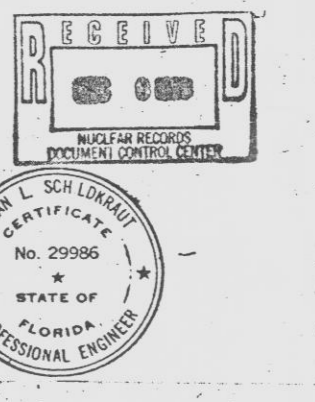
8770-G-424 S09



- NOTES**
- FOR GENERAL NOTES AND SYMBOLS SEE DWG 8770-G-424 S01.
 - THE THERMAL DETECTORS IN THE DIESEL GENERATOR BUILDING PROVIDE EARLY WARNING FIRE DETECTION AND NOTIFICATION.
 - THESE DETECTORS ACTIVATE THE AUTOMATIC SUPPRESSION SPRINKLER SYSTEM.
 - A.C. POWER SOURCE RECEPTACLE FOR APPENDIX 'R' EMERGENCY BATTERY PACK LIGHTING UNITS SEE 8770-G-360, 388, & 408 SH. 25.

EMERGENCY LIGHTING TABULATION

APPENDIX 'R' TAG NO.	LOCATION	AREA ILLUMINATED
EL-1-1-001	TRSL/19-5/23/M-2A	AUX FEED WATER PUMP 1C - NORTH SIDE
EL-1-1-002	TRSL/19-5/23/M-2A	AUX FEED WATER PUMP 1C - SOUTH SIDE
EL-1-2-001	CRZ/19/M-1013/R-1167	ACCESS/BOSS AT CONDENSATE STORAGE TANK
EL-1-4-001	DOB/1A/23	ACCESS/BOSS AT S-W KEIT OF DO BLDG 1A
EL-1-4-002	DOB/1A/23	N-W AREA ABOVE GENERATOR AT DO BLDG 1A
EL-1-4-003	DOB/1A/23	NORTH SIDE OF DO BLDG 1A (CENTER AREA)
EL-1-4-004	DOB/1A/23	SOUTH-EAST AREA OF DO BLDG 1A
EL-1-4-005	DOB/1A/23	SOUTH SIDE OF DO BLDG 1A (CENTER AREA)
EL-1-4-006	DOB/1A/23	480V MCC 1A7 AND DO COMB PNL 1A
EL-1-7-001	DOB/1B/23	ACCESS/BOSS AT S-W KEIT OF DO BLDG 1B
EL-1-7-002	DOB/1B/23	N-W AREA ABOVE GENERATOR AT DO BLDG 1B
EL-1-7-003	DOB/1B/23	NORTH SIDE OF DO BLDG 1B (WEST AREA)
EL-1-7-004	DOB/1B/23	SOUTH-EAST AREA OF DO BLDG 1B
EL-1-7-005	DOB/1B/23	SOUTH SIDE OF DO BLDG 1B (CENTER AREA)
EL-1-7-006	DOB/1B/23	480V MCC 1B7 AND DO COMB PNL 1B



NO.	DATE	REVISION	BY	CHK	APPROVED
4	11-5-93	20A 150-102, ADD 18-0-0-0, (M-1-0-1) LIGHTING PART, (M-1-0-1) PART PLAN, (10-1-0) NOTE: (J-M/S-10) TABULATION	RB	RB	
3	3-10-92	ADDED: (24-0-1) 24-0-1, (64-0-1) 64-0-1, (F4-F7) DETECTOR, (1-25) FIRE PNL 514-121A(1)	DV	IEP	
2	7-25-88	ADDED: EQUIPMENT ASSOC SYMBOLS (LS) PER PCM 267-183	RP	RP	
1	9-3-85	ADDED: SYMBOL TO INDICATE APP'R TRAIN 'X' SECURE AREA (S4 TO F4) NOT CIRCLED FOR CLARITY	J	RP	

THIS DOCUMENT IS THE PROPERTY OF ERASCO SERVICES INCORPORATED. ITS USE IS EXPRESSLY RESTRICTED BY THE TERMS OF THE CONTRACT, DATED AS OF AUGUST 10, 1988 BETWEEN ERASCO SERVICES INCORPORATED AND FLORIDA POWER & LIGHT COMPANY.

FLORIDA POWER & LIGHT COMPANY
ST. LUCIE PLANT
1976 - 800 MW INSTALLATION - UNIT 1
FIRE PROTECTION
MISC. OUTLYING AREA BUILDINGS
FIRE DETECTORS AND EMERGENCY LIGHTS
ERASCO SERVICES INCORPORATED

APPROVED: [Signature]
DATE: 11-14-93

SCALE: AS NOTED
DWG. ELEC
CHK. D. HANK
DES. R. BIRD

8770-G-424 S09

9701270073-36
E