

CONDITION	DAMPER POSITION
NORMAL	#1, 2 AND 3 CLOSED
POST ACCIDENT W/Min. O.A.	#1 AND 2 OPEN, #3 CLOSED "A" CLOSED, "B" AND "C" 75% OPEN
POST ACCIDENT W/0% O.A.	#2 AND 3 OPEN, #1 CLOSED "A" AND "C" CLOSED "B" OPEN

NOTES:
 1. IN CONTAINMENT VESSELS, THERMO-COUPLES WILL BE EXTENDED TO REACTOR ROOM BOARD FROM ALL FAN & MOTOR BEARINGS, & VARIOUS SPACE LOCATIONS. 1-T'S WILL BE EXTENDED FROM CHARCOAL FILTER PLENUMS.

- LEGENDS**
- CHARCOAL FILTER
 - HEPA FILTER
 - DYM - MOISTURE REMOVAL FILTER
 - C/C - HOUSE SERVICE COOLING WATER
 - R/F - ROUGHING FILTER
 - C/W - CHILLED WATER COOLING COIL
 - H/C - STEAM HEATING COIL
 - M - MANUAL DAMPER
 - B.V. - BUTTERFLY VALVE (B.V.)
 - BT - BUTTERFLY VALVE (BUTTERFLY TIGHT SHUTOFF)
 - SD - SOLID CONTR. AIR DRIVEN DAMPER
 - CV - CONTROL VALVE
 - PCD - PRESSURE CONTROL DAMPER
 - DU - DUCTWORK
 - INF - INFILTRATION
 - UH - UNIT HEATERS
 - RC - REHEAT COIL
 - FA - ALARM ON - NO FLOW
 - VA - VALVE POSITION INDICATOR
 - PA - PRESSURE ALARM
 - FR - AIR FLOW REGULATOR
 - FAE - SYMBOL INDICATES TWO ELECTRIC FLOW DEVICES
 - DS - DAMPER POSITION SENSOR
 - VS - VIBRATION SENSOR

CONSTRUCTION	
LIMITED CONSTRUCTION:	AS NOTED
PRELIMINARY NOT FOR CONSTRUCTION	
BIDDING PURPOSES	
JUN 18 1980	INFO ONLY
DATE	RELEASED FOR

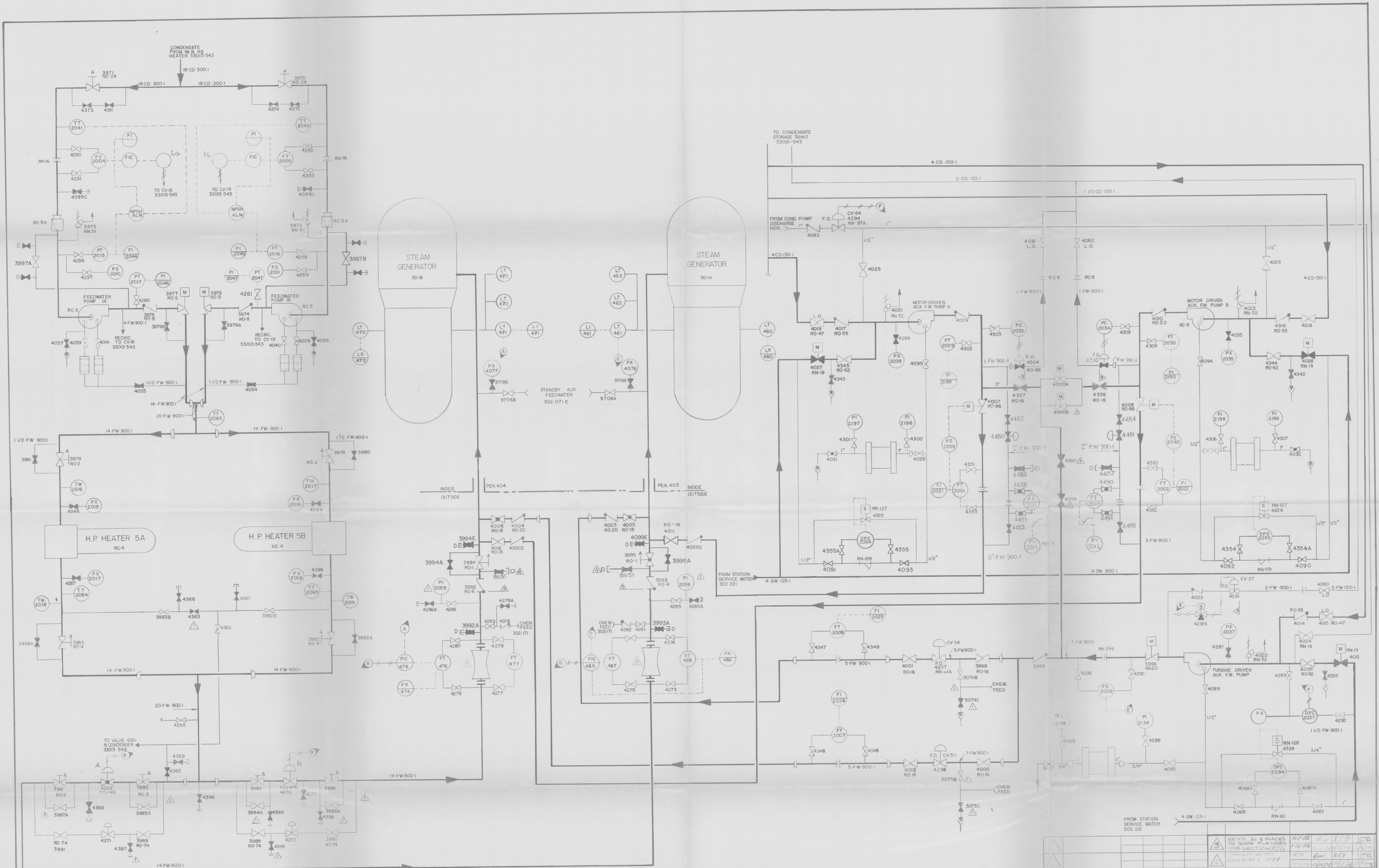
REV.	BY	CHKD.	RESP. ENGR.	DATE
ORIGINAL				

THIS DRAWING SUPERCEDES GILBERT ASSOC. DRAWING D-118-101, SAME TITLE, (REV. XI)

NOTICE REVISIONS - RETURN TO DRAFTING DEPARTMENT ALL PRINTS PRIOR TO LAST REVISION

REFERENCE DRAWINGS
 GILBERT ASSOC. DWG. D-118-101

ROCHESTER GAS & ELECTRIC CORP.
 ROCHESTER, N.Y.
 ENGINEERING DEPT.
 FOLDER No. HEATING, VENTILATING & AIR CONDITIONING
 SCALE ~
 JOB No. No. 33013-533



NO.	REVISION	DATE	BY	CHKD.	APP.
3	REV'D IN 4 PLACES TO SHOW PLACES (MIDSECTION) CHANGED AS NOTED	1/22/79	AW	JCB	JCH
4	REVISED PER DME 2444	1/11/77	AW	JCB	JCH
5	ORIGINAL	1-8-76	AW	JCB	JCH

CONSTRUCTION	
LIMITED CONSTRUCTION: AS NOTED	
PRELIMINARY NOT FOR CONSTRUCTION	
BIDDING PURPOSES	
AS BUILT	
RELEASED FOR	ENGR

DATE	12/1/79
------	---------

FACILITY	GINNA STA	ROCHESTER GAS & ELECTRIC CORP.
SCALE	NONE	ROCHESTER, NEW YORK
FEED WATER SYSTEM FLOW DIAGRAM		
JOB NO.	DRAWING NO.	REV.
	33013-544	

THIS DWG. SUPERSEDES GAI DWG. NO. 302-101-19 & RGE DWG. NO. 33013-519D

3006250265-02