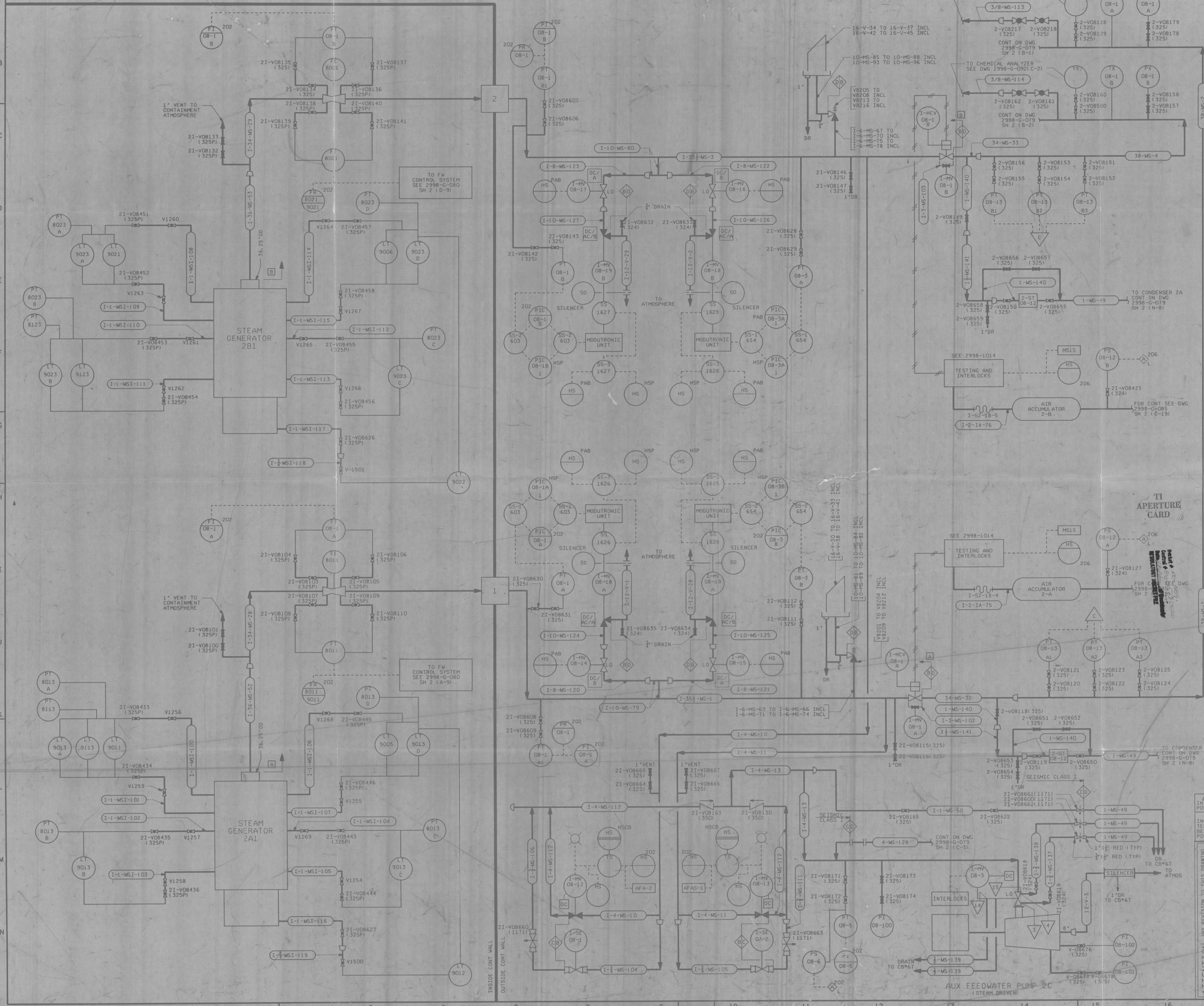


NO	DATE	REVISION	BY	CH	APPROVED
15	8/9/85	FOR PREVIOUS REV BLOCKS SEE RECORD MYLAR 2998-G-079 SH. 1-12, REV. 14 THIS DWG WAS REVISED AND REDRAWN FROM DWG 079 SH. 1&2, REV. 14	FB	MS	WJ RJR



- NOTES:**
- FOR FIELD TEST (LP TURBINE) CONNECTIONS SEE 2998-551, 194 THRU 197
 - A, B, C OR ABC ENCLOSED IN A SQUARE (□) IDENTIFIES LOOP DESIGNATION OF CLASS I PIPING SYSTEM.
 - VALVES DESIGNATED WITH 'P' REQUIRE SPECIAL PAINTING.
 - FOR INFORMATION SUPPLIED BY MFR AS AN APPURTENANCE TO ASSOCIATED MAJOR EQUIPMENT NOT SHOWN ON THIS DRAWING SEE ENDRAC DWG 2998-2184.
- △ TURBINE CONN NO ON DWG 2998-21 (WSTG DWG NO 725-J-542)
 - CONDENSER CONN NO ON DWG 2998-445 TO 448 (WSTG DWG NO 736-J-709, 4 SHEETS)
 - ◇ TURB-GEN PURCHASER'S PIPE CONN. SEE PIPING STEAM DRAIN & GLAND DIAG. DWG 2998-2184 & TURB OUTLINE SUPPLEMENT (PPC)-DWG.
 - ◊ INSULATING FLANGE
 - ◻ IDENTIFIES INTERFACE OF QUALITY GROUPS A, B, C & D COMPONENTS
 - AS SEISMIC CLASS I QUALITY GROUP D COMPONENTS ARE NOT DESIGNATED AS SEISMIC CLASS I UNLESS OTHERWISE NOTED.
 - △ DATA PROCESSOR
 - ▽ AUXILIARY FEED PUMP TURBINE CONNS. SEE DWG 2998-3432
 - * INDICATES APPURTENANCE SUPPLIED WITH ASSOCIATED MAJOR COMPONENT.
 - - - INDICATES TEMPORARY PIPING

- REFERENCE DWGS:**
- LIST OF DRAWINGS 2998-A-146
 - INSTR LIST & PIPE, VALVES & INSTRUMENT SYMBOLS 2998-B-270
 - INSTRUMENT INSTALLATION DETAILS 2998-B-231
 - VALVE LIST 2998-A-051
 - LINE LIST 2998-B-052
 - VALVE OPERATIONAL NO. INDEX 2998-B-057A
 - STEAM GENERATOR PROTECTIVE CHANNEL BLOCK DIAGRAM 2998-8341, 2998-8342

8805190126
RECEIVED
AUG 26 1985
NUCLEAR SAFETY
RELATED IN PART ONLY

INFORMATION ONLY
VERIFY WITH A CONTROLLED COPY BEFORE USE
THE DESIGN INFORMATION FOR THE CHANGES SHOWN IN THIS REVISION HAS BEEN ENGINEERED BY FLORIDA POWER & LIGHT COMPANY.
THIS DOCUMENT IS THE PROPERTY OF EBASCO SERVICES INCORPORATED. ITS USE IS EXPRESSLY RESTRICTED BY THE TERMS OF THE CONTRACT, DATED AS OF SEPTEMBER 1, 1985, BETWEEN EBASCO SERVICES INCORPORATED AND FLORIDA POWER & LIGHT COMPANY.

FLORIDA POWER & LIGHT COMPANY
ST. LUCIE PLANT
1983-890 MW (e) EXTENSION UNIT-NO. 2

FLOW DIAGRAM
MAIN STEAM SYSTEM SH. NO. 1

EBASCO SERVICES INCORPORATED

SCALE NONE	APPROVED	DATE 8/9/85
DIV. MECHANICAL	CC	2998-G-079
DR. P. BERGERON	WJ	SH. 1 OF 6
CH. J.A. SMITH	MS	