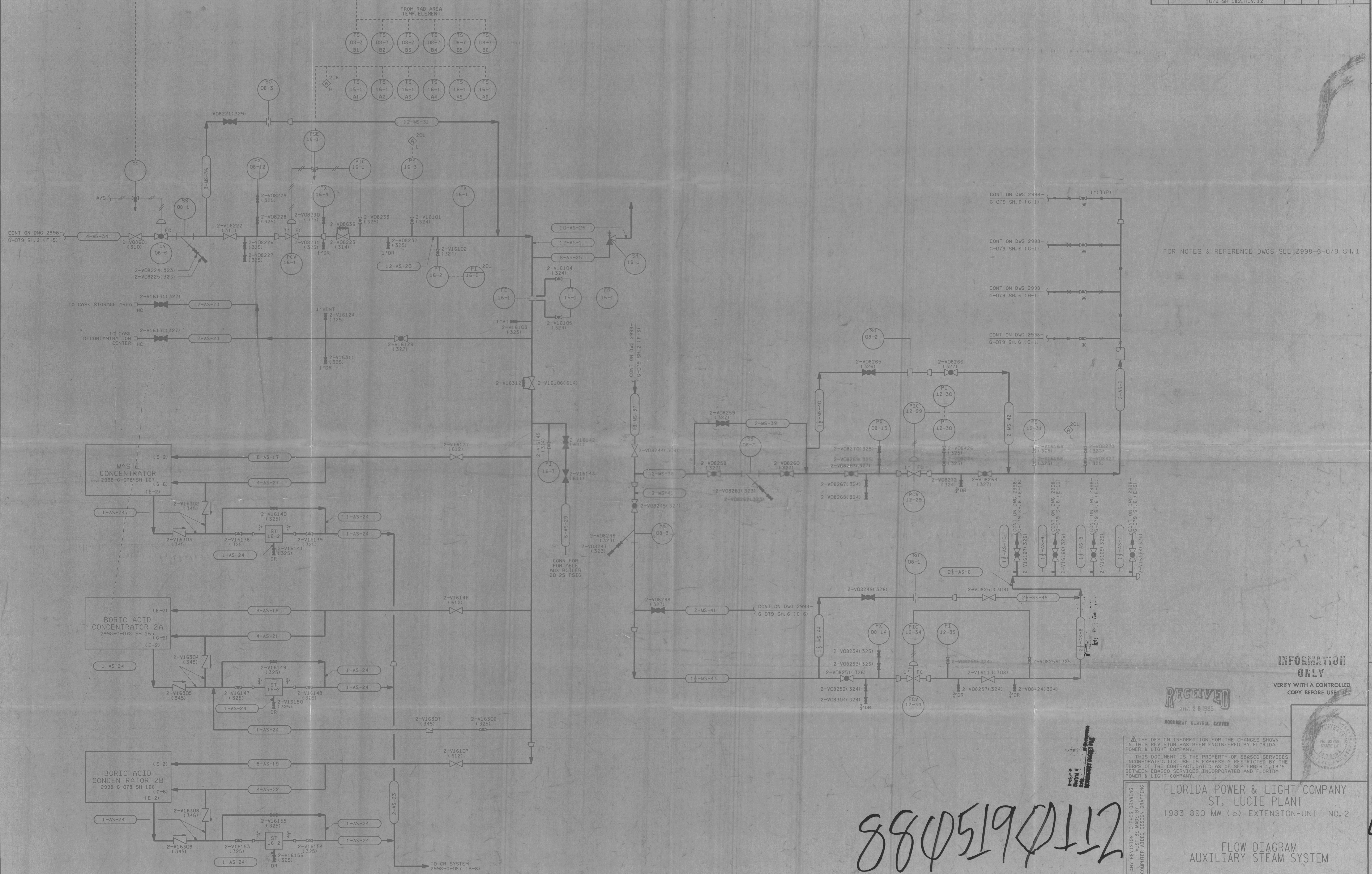


2998-G-079
SHEET 5 OF 6

NO	DATE	REVISION	BY	CH	APPROVED
13	8/3/85	FOR PREVIOUS REV BLOCKS SEE RECORD MYLAR. 2998-G-079 SH. 1&2. REV. 12. THIS DWG WAS REVISED AND REDRAWN FROM DWG 079 SH. 1&2. REV. 12.	PB	MS	CCG



FOR NOTES & REFERENCE DWGS SEE 2998-G-079 SH. 1

INFORMATION ONLY
VERIFY WITH A CONTROLLED COPY BEFORE USE

RECEIVED
AUG 28 1985
DOCUMENT CONTROL CENTER

THE DESIGN INFORMATION FOR THE CHANGES SHOWN IN THIS REVISION HAS BEEN ENGINEERED BY FLORIDA POWER & LIGHT COMPANY.
THIS DOCUMENT IS THE PROPERTY OF EBASCO SERVICES INCORPORATED. ITS USE IS EXPRESSLY RESTRICTED BY THE TERMS OF THE CONTRACT DATED AS OF SEPTEMBER 11, 1976 BETWEEN EBASCO SERVICES INCORPORATED AND FLORIDA POWER & LIGHT COMPANY.

FLORIDA POWER & LIGHT COMPANY
ST. LUCIE PLANT
1983-890 MW (e) EXTENSION-UNIT NO. 2
FLOW DIAGRAM
AUXILIARY STEAM SYSTEM

EBASCO SERVICES INCORPORATED
SCALE NONE
DIV. MECHANICAL
CH. J.A. SMITH
APPROVED: [Signature]
DATE 8/3/85
2998-G-079
SH 5 OF 6

8805190112

ATTENTION: ANY REVISION TO THIS DRAWING MUST BE MADE BY COMPUTER AIDED DESIGN DRAFTING

ITI APERTURE CARD

E

113