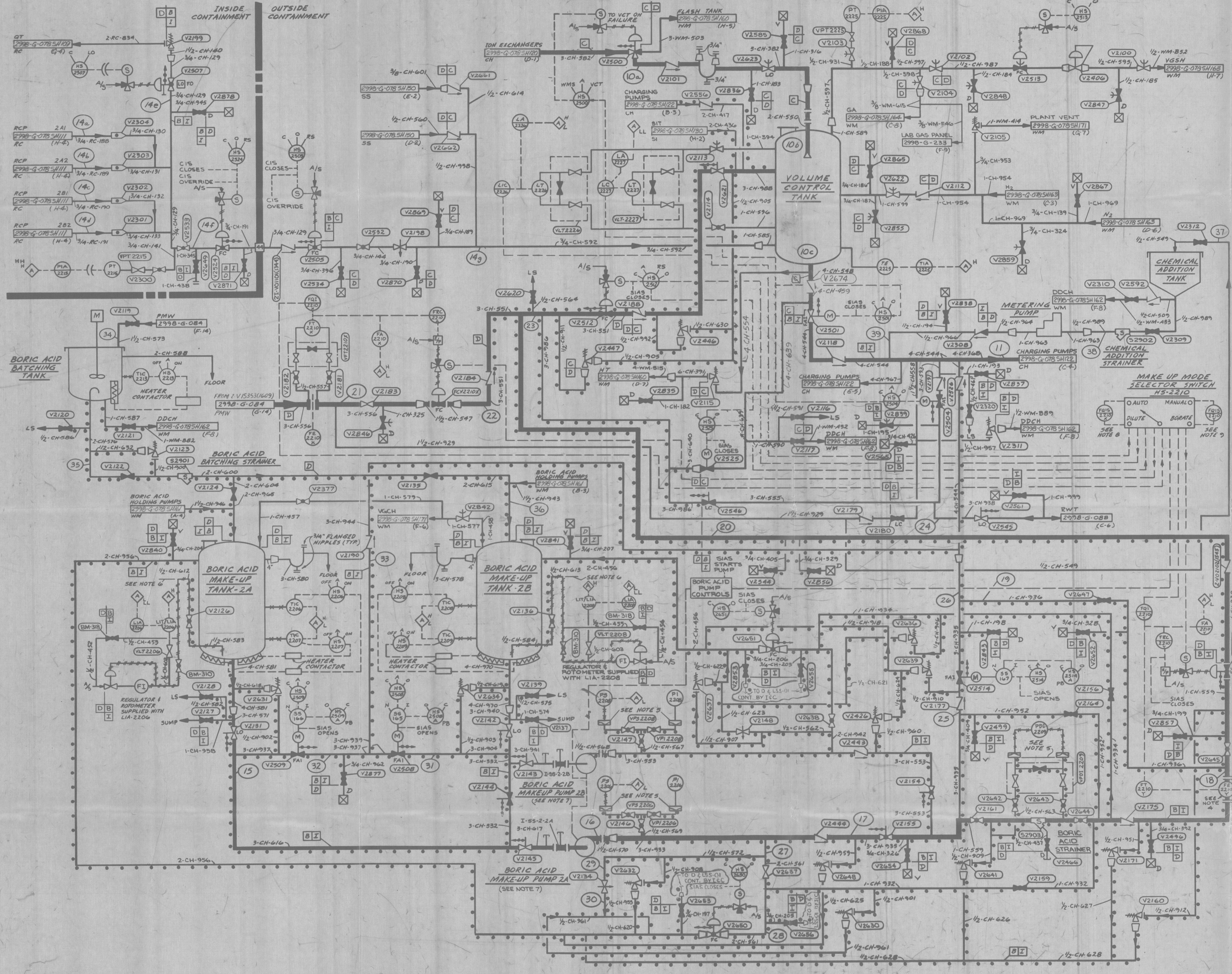


REVISIONS				
NO	DATE	DESCRIPTION	BY	APPROVED
0	5/16/84	THE FOLLOWING CHANGES MADE PRIOR TO DRAWING ISSUE: GEN: C.E. DWG. NOS. TO EBASCO DWG. NOS. WHERE APPLICABLE (NOT CIRCLED).	AZ	AS
1	1/7/85	PCIM-183-285 REVISED (E4) PIPING (F4) LINE NO. ADDED: (F4) PIPING; (F4) CV VALVE GENERAL REVISION: ADDED: (E7) VALVE TAG NUMBER	AS	AS
2	4-12-85	PCIM-183-285 REVISED (E4 B5 C4) PIPING.	AH	AS



- BATCHING SWITCH FOIS-2210Y CLOSES FCV-2210Y AT END OF BORATE BATCH.
- BATCHING SWITCH FOIS-2210X CLOSES FCV-2210X AT END OF DILUTE BATCH.
- FOR PUMP VENTS & DRAINS SEE DWG. 2998-G-078-54105.
- TUBING AND HEAT TRACING MUST BE CARRIED ABOVE THE MAXIMUM UPPER TANGENT LINE OPERATING LEVEL OF THE B.A. MAKE-UP TANKS.
- HEAT TRACE TO LOWER FLANGE FACE OF DIAPHRAGM SEAL ONLY.
- FE-2210Y MUST BE INSTALLED IN A HORIZONTAL PIPE RUN. THE U.T. SENSING ELEMENT MUST NOT BE HEAT TRACED.
- FOR CONTINUATION OF THE CHEMICAL AND VOLUME CONTROL SYSTEM SEE DWGS. 2998-G-078-54102, 54103.
- FOR SYMBOLS AND ABBREVIATIONS AND REFERENCE DWGS SEE 2998-G-078-54100.

RECEIVED
APR 23 1985
DOCUMENT CONTROL CENTER

THE INFORMATION SHOWN ON REV 0 OF THIS DRAWING HAS BEEN REPRODUCED FROM COMBUSTION ENGINEERING DRAWING NO E-13172-310-121, REV 18 (EMDRAC NUMBER 2998-80, REV 19), AND EBASCO SERVICES INCORPORATED BEARS NO RESPONSIBILITY FOR THE ACCURACY OF THE INFORMATION SHOWN.

THIS DOCUMENT IS THE PROPERTY OF EBASCO SERVICES INCORPORATED. ITS USE IS EXPRESSLY RESTRICTED BY THE TERMS OF THE CONTRACT, DATED AS OF SEPTEMBER 1, 1975 BETWEEN EBASCO SERVICES INCORPORATED AND FLORIDA POWER & LIGHT COMPANY.

FLORIDA POWER & LIGHT COMPANY
ST. LUCIE PLANT
1983 890 MW(S) EXTENSION UNIT NO. 2
FLOW DIAGRAM
CHEMICAL & VOLUME CONTROL SYSTEM
(SHEET 2)

EBASCO SERVICES INCORPORATED	
SCALE: N/A	APPROVED: [Signature]
DIV: MECH	DATE: 5/16/84
DR: AEZ	2998-G-078
CH: SWENSON	SHEET 121

8805190086

NUCLEAR SAFETY
RELATED IN PART ONLY