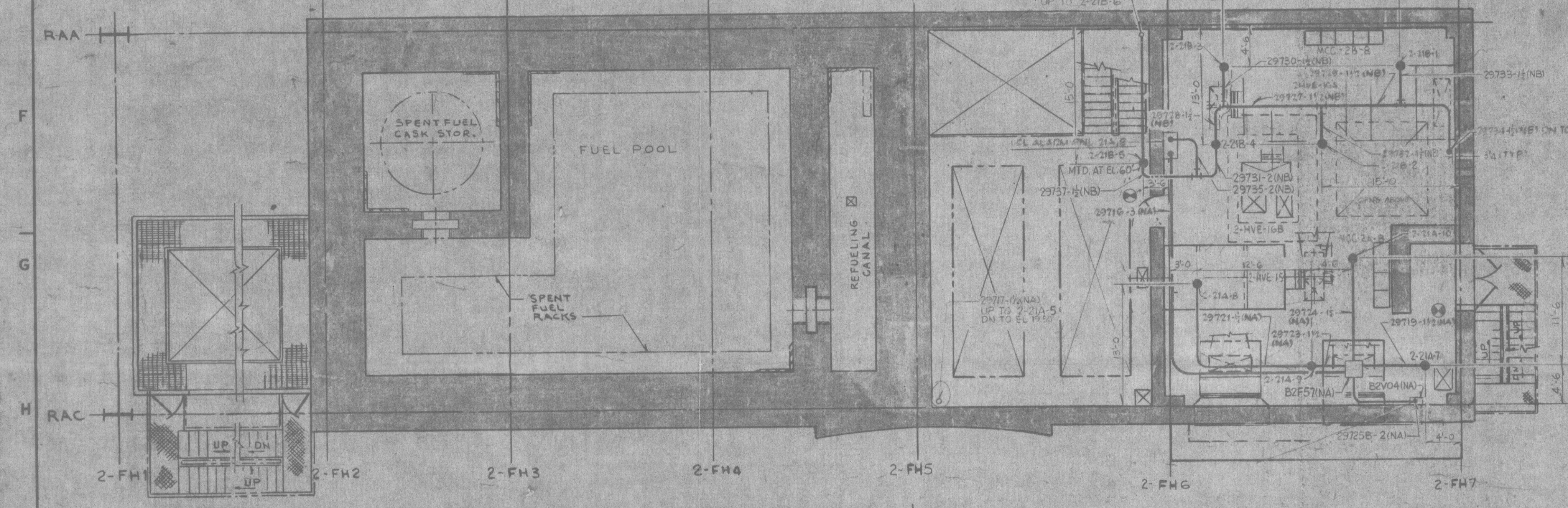
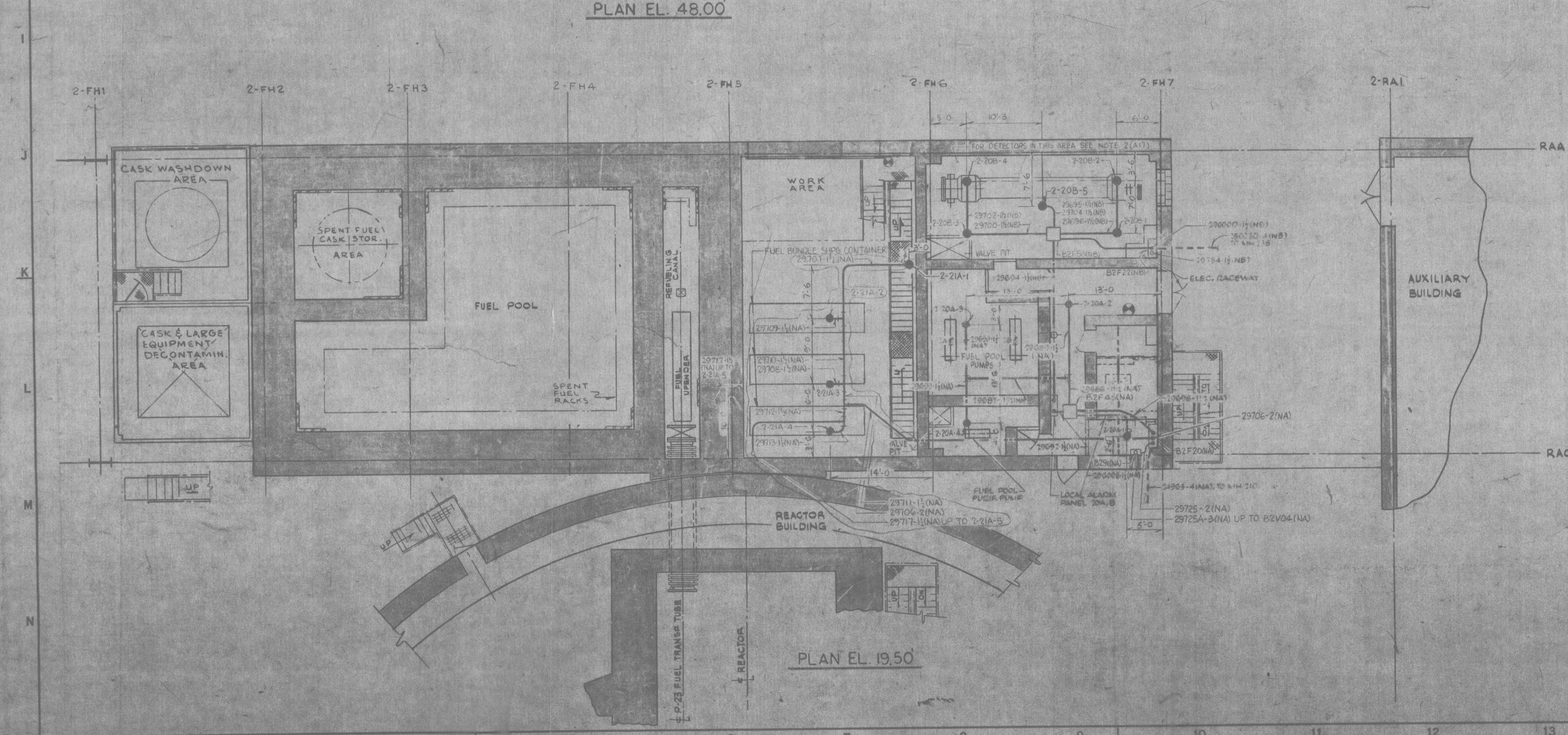


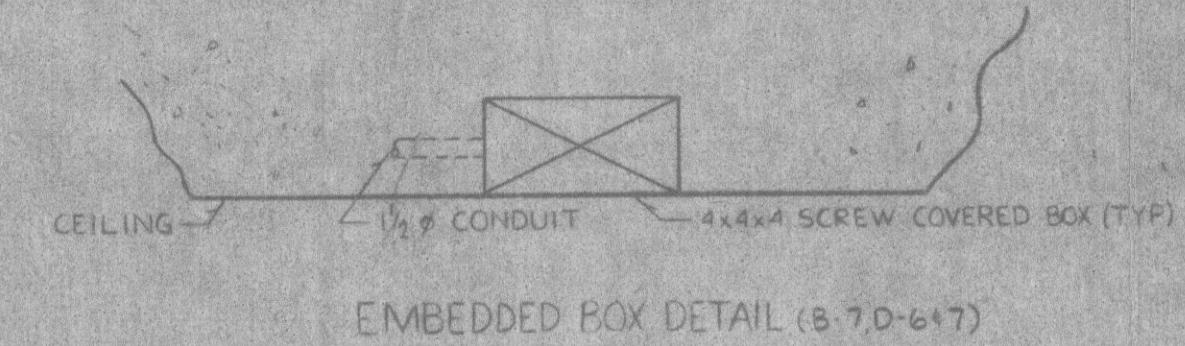
PLAN EL. 62.00



PLAN EL. 48.00



PLAN EL. 19.50



- NOTES:**
1. FOR ADDITIONAL NOTES, SYMBOLS & REFERENCE DWGS. SEE DWG. 2998-G-413 SH.1
 2. DETECTORS IN FUEL POOL HEAT EXCHANGER ROOM TO BE MOUNTED BENEATH FL. EL. 32.00
 3. THE DOCUMENTS SUCH AS PERS. LOGS, ETC. WRITTEN AGAINST THIS DRAWING ARE LISTED ON DWG. 2998-G-413 SH. 413-5.0.

- SYMBOLS:**
- SMOKE DETECTOR
 - SMOKE DETECTOR - EMBEDDED CONDUIT SEE DETAIL (S. 7.0-6+7)

INFORMATION ONLY
 VERIFY WITH A CONTROLLED COPY BEFORE USE

8678 RECEIVED
 OCT 29 1982
 Mag

PRC APERTURE CARD



NO.	DATE	REVISION	BY	CHK.	APPROVED
4	10-2-82	ADDED: NOTE (B17), CND. 4 CND FITTINGS (C7) REVISED: CND. LAYOUT (C6, H6, L7)	J.E.	B. DEHES	[Signature]
3	1-4-82	ADDED: EMBEDDED BOX DETAIL (S. 7.0-6+7) SMOKE DETECTOR - EMBEDDED CONDUIT SYMBOL (S. 7.0-6+7) REVISED: CND. LAYOUT (S. 7.0-6+7)	J.E.	J.F.	[Signature]
2	11-7-80	ADDED: NOTE (F7) CND (F7, M10), BULKHEAD DETECTOR LOC. (P2F8, 610, M10) REVISED: CND (A7) FROM S. K3, K10, L6, L10, M9 DETECTOR TO S. K3, K10, L6, L10, M9 DETECTOR LOC. (S. C7, E8, E10, F8, F9, G8, H10, J4, K7, K8, M7); SYMBOL (B17), BOX (H6) DELETED: CND (E7) FROM J1, J10, L10, L10, BOX (F7); SYMBOL (B17); DIMENSION (F8, K10, M10)	P. JOHNSON	R. [Signature]	[Signature]
1	7-3-80	ADDED: SEPARATION CODE (A7) FROM P. 31, H11, J1, K3, K10, L10, L13, M10, M11, N11 (A7) REVISED: CND TITLES (M9); DETECTOR LOC. (1, A55) CND (S. 7.0-6+7) CND. NO. (F8) FROM S. E10, F10, F11, F12, G8, H10, J4, K7, K8, M7, N11, N12, N13, N14, N15, N16, N17, N18, N19, N20, N21, N22, N23, N24, N25, N26, N27, N28, N29, N30, N31, N32, N33, N34, N35, N36, N37, N38, N39, N40, N41, N42, N43, N44, N45, N46, N47, N48, N49, N50, N51, N52, N53, N54, N55, N56, N57, N58, N59, N60, N61, N62, N63, N64, N65, N66, N67, N68, N69, N70, N71, N72, N73, N74, N75, N76, N77, N78, N79, N80, N81, N82, N83, N84, N85, N86, N87, N88, N89, N90, N91, N92, N93, N94, N95, N96, N97, N98, N99, N100	P. JOHNSON	R. [Signature]	[Signature]

8401040564

THIS DOCUMENT IS THE PROPERTY OF EBASCO SERVICES INCORPORATED. ITS USE IS EXPRESSLY RESTRICTED BY THE TERMS OF THE CONTRACT, DATED AS OF SEPT. 1, 1979 BETWEEN EBASCO SERVICES INCORPORATED AND FLORIDA POWER & LIGHT COMPANY.

FLORIDA POWER & LIGHT COMPANY
 ST. LUCIE PLANT
 1983-890 MW (e) EXTENSION - UNIT NO. 2
 FUEL HANDLING BUILDING
 FIRE DETECTION SYSTEM
 CONDUIT LAYOUT

EBASCO SERVICES INCORPORATED NEW YORK	
APPROVED	DATE 4/20/10
DR. ELEC.	2998-G-413
DR. MECH.	SH. 5