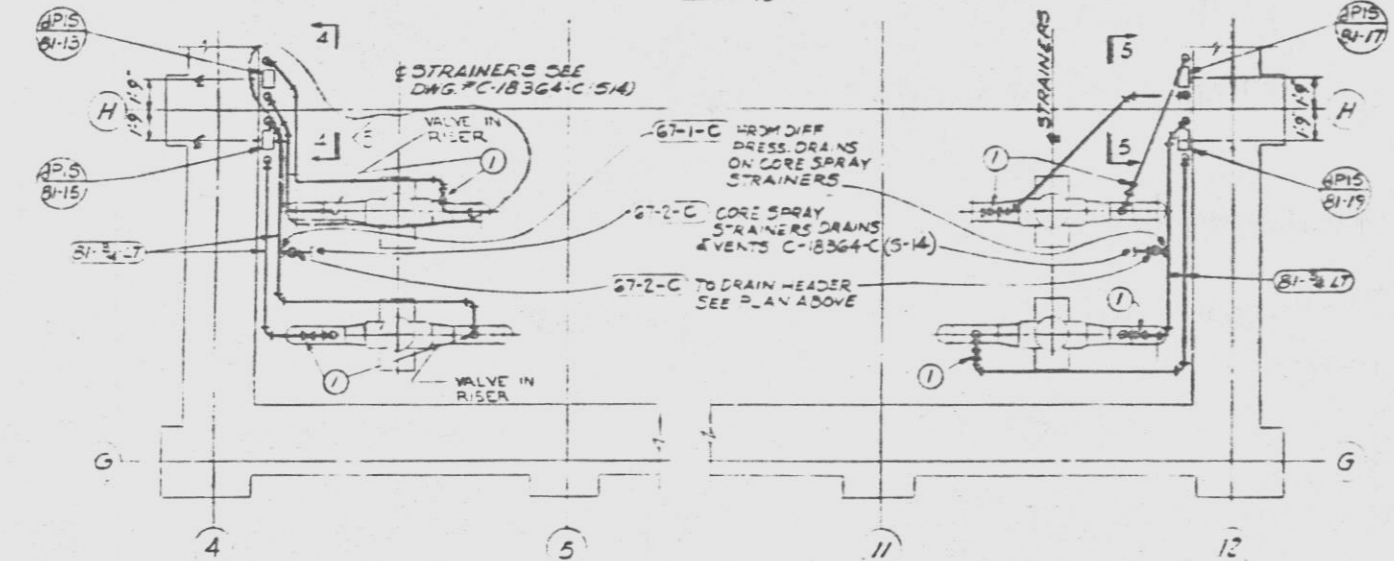


PLAN ABOVE EL 198.0'

SUPPRESSION VESSEL - LEVEL INDICATING, H/L & L ALARM
 SUPPRESSION VESSEL - PRESS INDICATING, H/P & L ALARM
 SPRAY PUMP SUCTION - L PRESS ALARM

PT/2012-07 GEMAC # 553
 LT/58-04 FISHER GOVERNOR CO. MODEL # 2321 LEVEL TROL
 PS/51-14, 51-16, 51-18, 51-20 STATIC 'O' RING PRESS. SM CO. MODEL # 6-N-R31-KMS

SCALE 3/8"=1'-0"

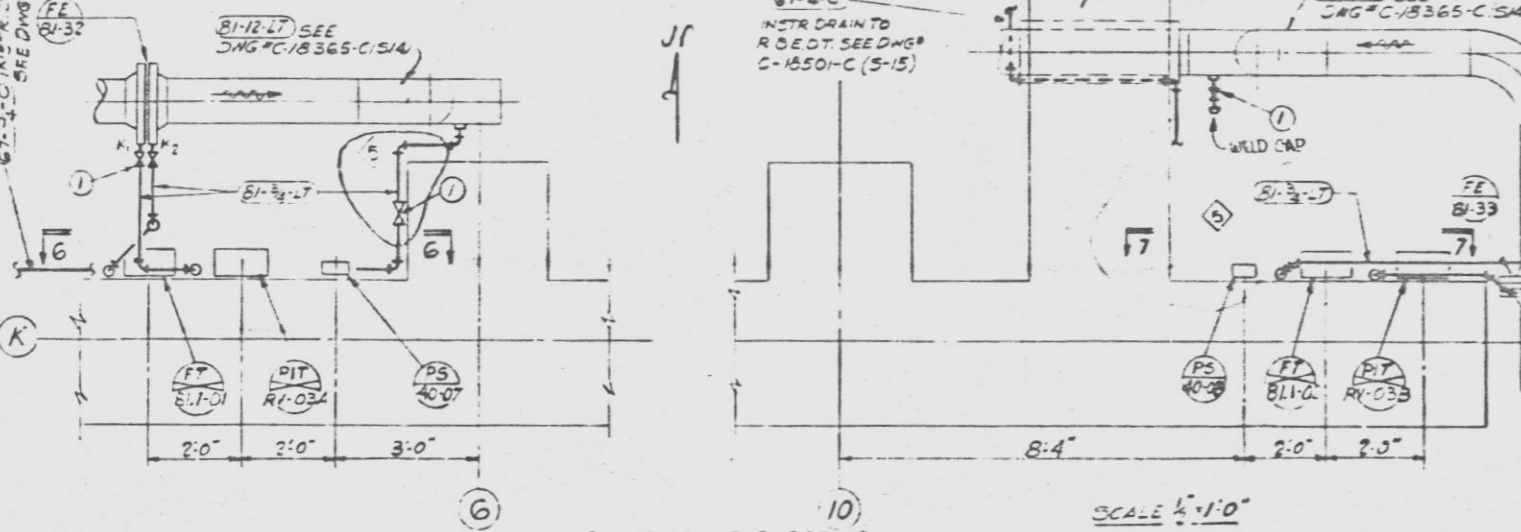


PLAN ABOVE EL 218.0'

SPRAY PUMP STRAINER DIFFERENTIAL PRESSURE

DP/5, 21-13, 21-15, 21-17, 21-19 - BARTON INSTR. CORP. DWS # D3-289000-1 MODEL # 289

SCALE 3/8"=1'-0"

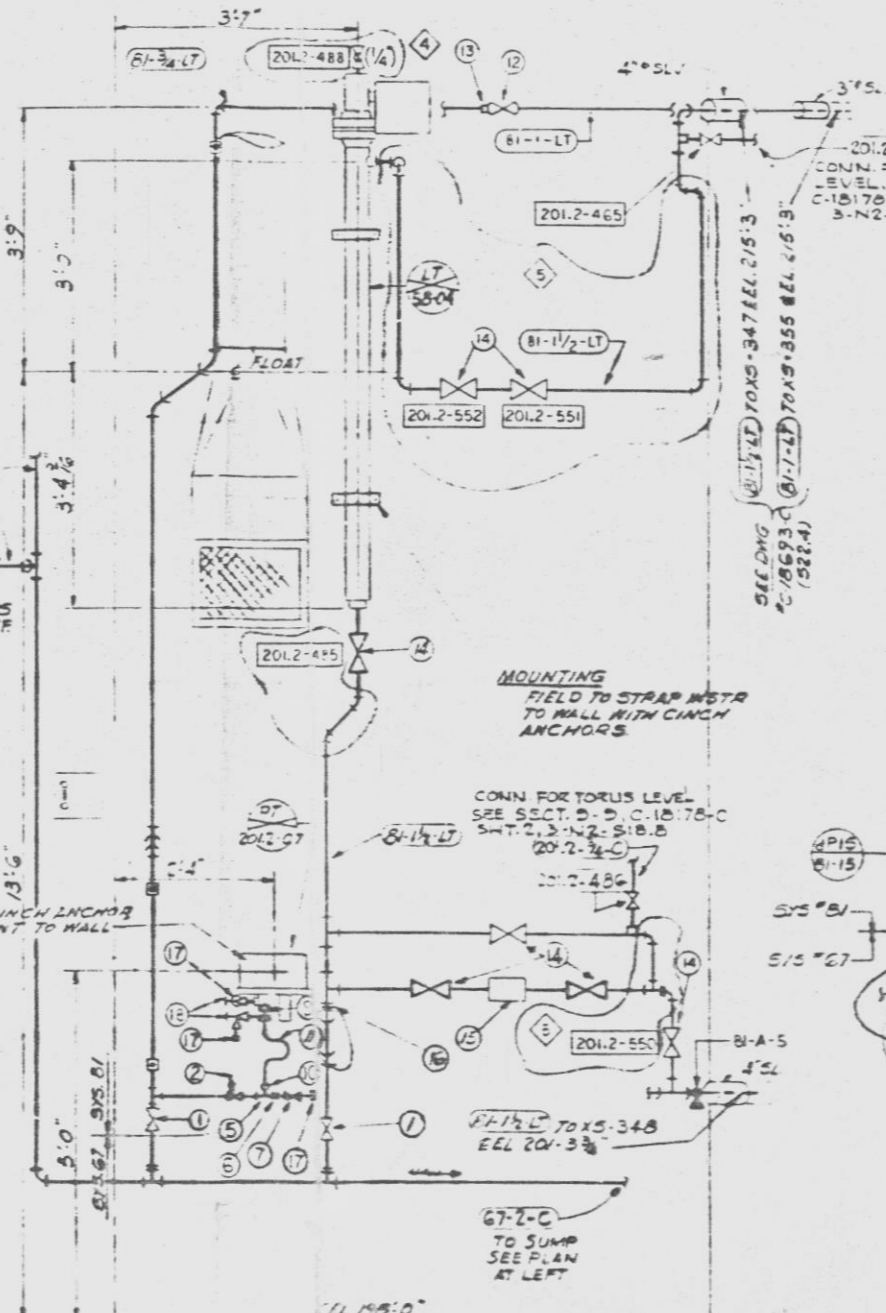


PLAN ABOVE EL 237.0'

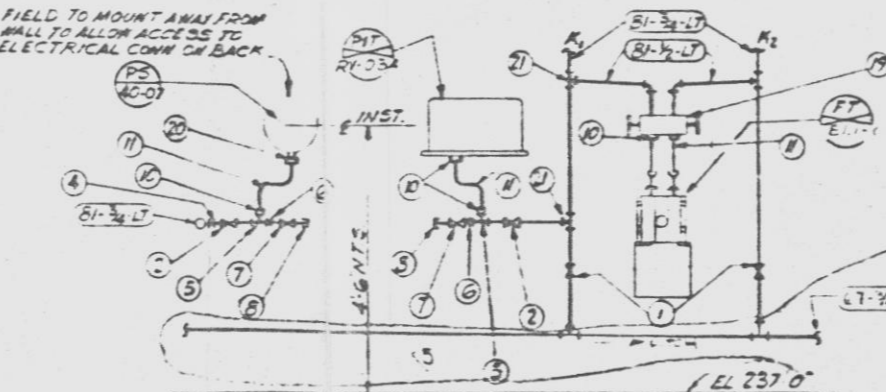
SPRAY TOPPING PUMP DISCH - FLOW INDICATING
 SPRAY TOPPING PUMP DISCH - PRESS INDICATING, H/P PRESS ALARM
 SPRAY TOPPING PUMP DISCH - L PRESS ALARM

FT/51-01 ROSENBLUM MODEL NO. 1151 DP
 FT/51-02 ROSENBLUM MODEL NO. 1153 DP S/PB
 PT/51-03, 51-05 3/2 MAC # 551
 PS/40-07, 40-08 MERCOD CORP. DWS # 2500B MODEL # DA543-2

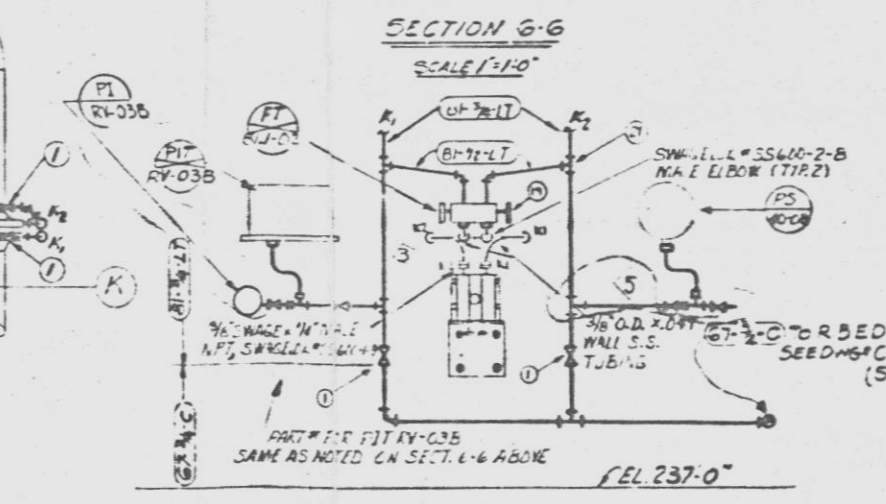
SCALE 3/8"=1'-0"



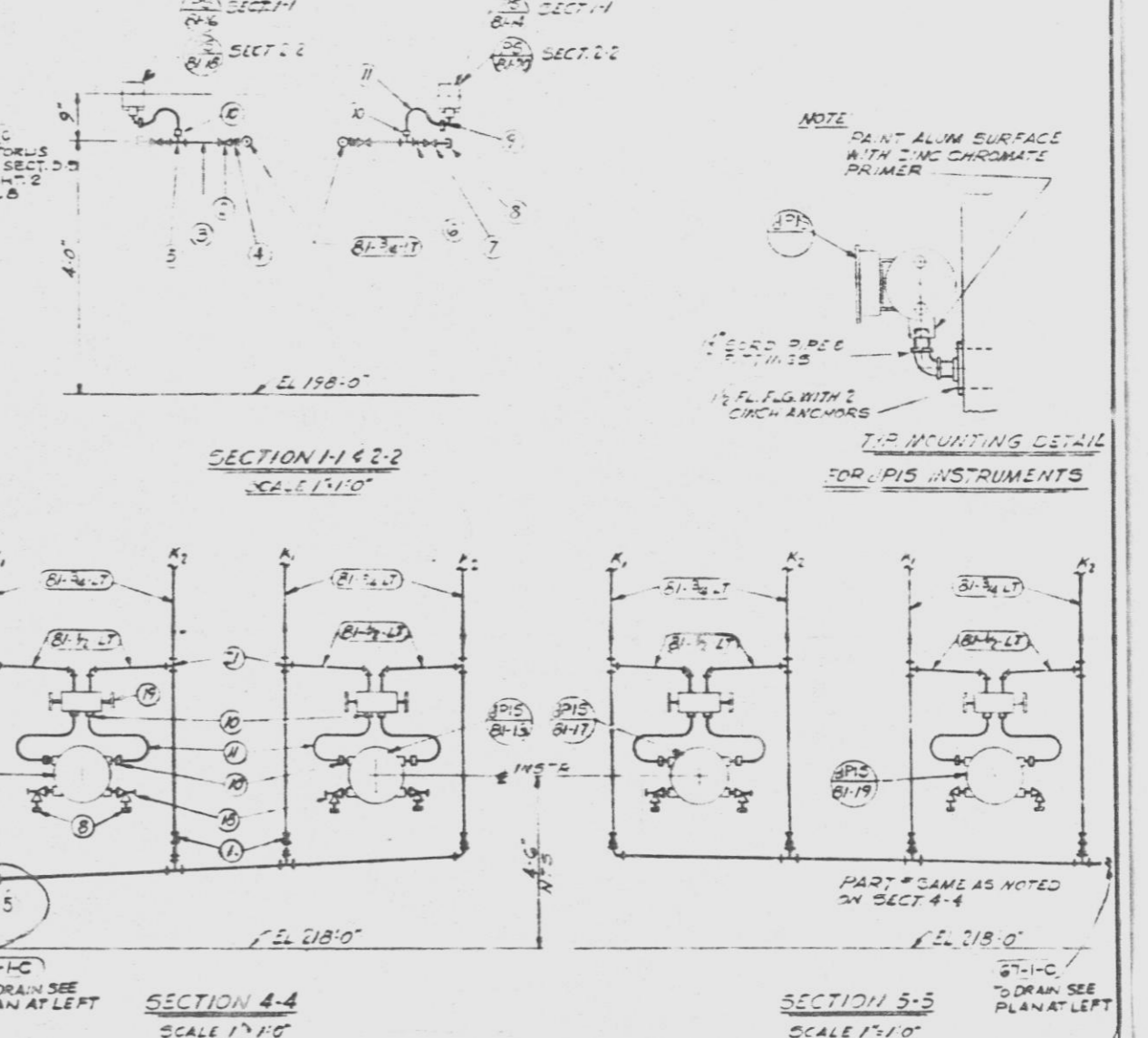
SECTION 3-3
 SCALE 3/8"=1'-0"



SECTION 6-6
 SCALE 3/8"=1'-0"



SECTION 7-7
 SCALE 3/8"=1'-0"

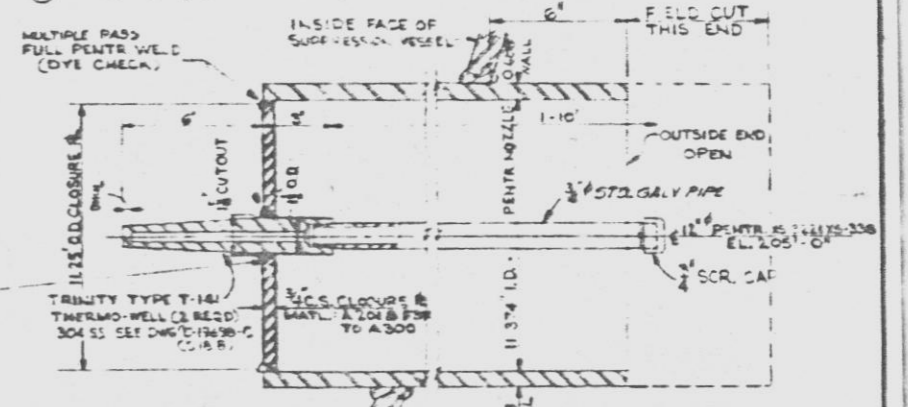


SECTION 1-1 & 2-2
 SCALE 1/2"=1'-0"

SECTION 4-4
 SCALE 1/2"=1'-0"

SECTION 5-5
 SCALE 1/2"=1'-0"

- BILL OF MATERIAL
- 1 - CS-G-3 3/4" SW 600° CS GLOBE VALVE
 - 2 - CS-N-2 1/2" SCR D. 6000° S.S. GLOBE WST. VALVE
 - 3 - 1/2" C.S. SCH #40 PIPE ASTM A333
 - 4 - 3/4" x 1/2" SW C.S. RED. INSERT
 - 5 - 1/2" x 1/2" SCR D. CS TEE
 - 6 - 1/2" x 1/2" SCR D. CS BUSHINGS
 - 7 - 1/4" x 3/16" SCR D. S.S. WHITE VALVE
 - 8 - 1/2" SCR D. CS CAP
 - 9 - SWAGelok MALE ELBOW B10-7-1 3/8"
 - 10 - SWAGelok MALE CONNECTOR B10-1-8-3/8"
 - 11 - 1/2" O.D. WALL S.S. TUBING
 - 12 - CS-G-4 1/2" SW 600° CS GLOBE VALVE
 - 13 - 1/2" SW C.S. RED. INSERT
 - 14 - CS-G-6 1/2" SW C.S. 600° GLOBE VALVE
 - 15 - 1/2" FUSE VALVE (MAROTTA VALVE CORP. MODEL # FV12) CS-FC-G
 - 16 - 1/2" x 1/2" SW C.S. RED. INSERT
 - 17 - 1/2" SCR D. CS CAP
 - 18 - 1/4" x 3/8" (1/2" SCR D. S.S. WHITE VALVE)
 - 19 - 55 3M 2 1/2" SCR D. S.S. MANIFOLD ANDERSON GREENWOOD #MHS 4
 - 20 - SWAGelok FEMALE CONNECTOR B10-7-4-3/8"
 - 21 - 1/2" x 1/2" SW C.S. RED. TEE



SUPPRESSION VESSEL WATER TEMPERATURE TEST AND CLOSURE AT PENETR'S XS-312 & XS-338

FOR GENERAL NOTES & REFERENCE DWGS. SEE DWS. # C-18179-C, 518.6.

TI APERTURE CARD

NIAGARA MOHAWK POWER CORPORATION	
NINE MILE POINT NUCLEAR STATION	
REACTOR BUILDING	
INSTRUMENT & METERING PIPING	
CORE SPRAY SYSTEM	
DATE	2/5/68
BY	AS SHOWN
NO.	3-N2-S18.8
REV.	C-18178-C
SHEET 1 OF 2	

D
 8808040285