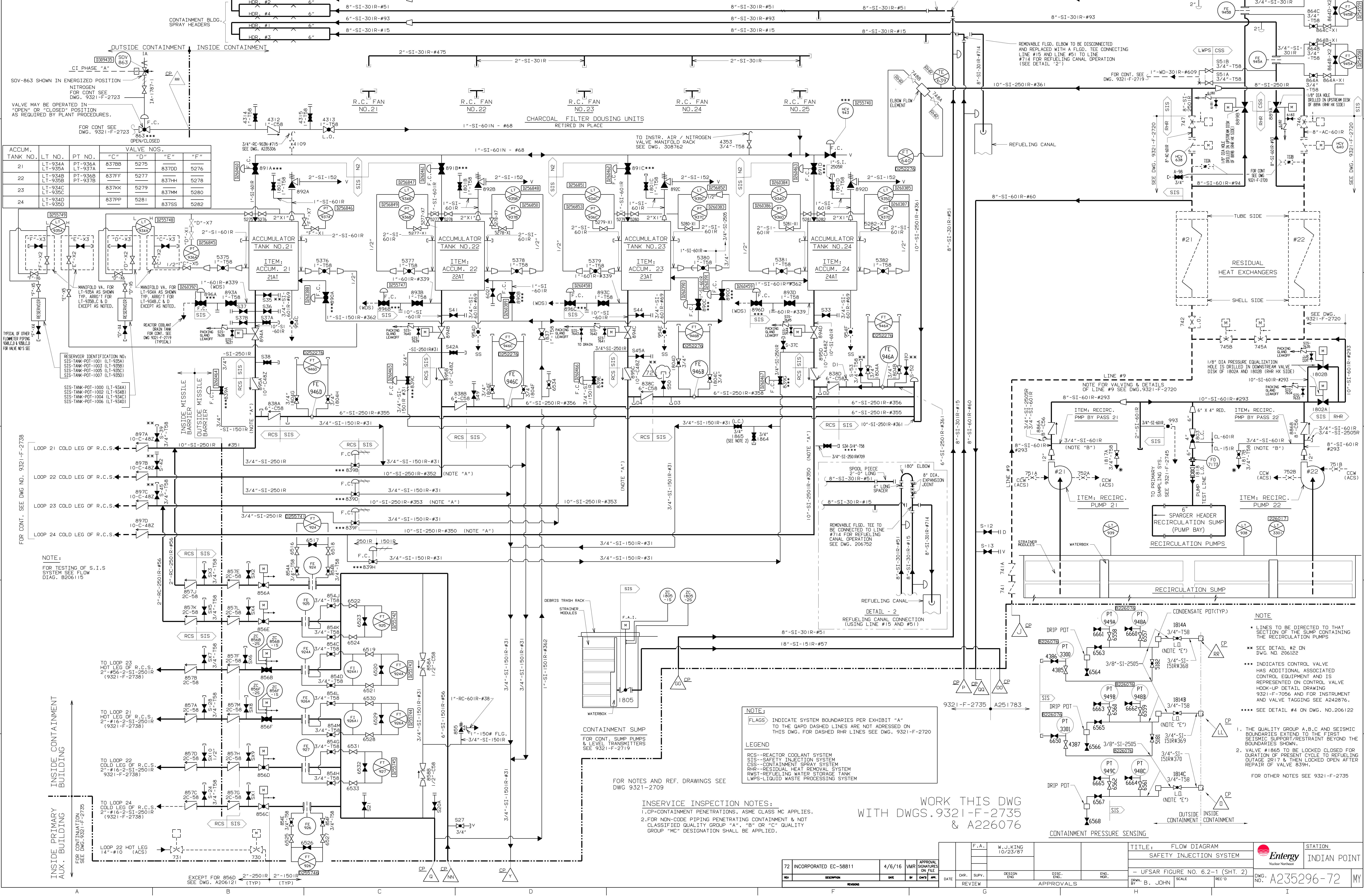


A235296



TANK NO.	LT NO.	PT NO.	"C"	"D"	"E"	"F"
21	LT-934A	PT-936A	8378B	5275	8370D	5276
	LT-935A	PT-937A	837FF	5277	837HH	5278
22	LT-934B	PT-936B	837FF	5277	837HH	5278
	LT-935B	PT-937B	837KK	5279	837MM	5280
23	LT-934C	PT-936C	837KK	5279	837MM	5280
	LT-935C	PT-937C	837PP	5281	837SS	5282
24	LT-934D	PT-936D	837PP	5281	837SS	5282
	LT-935D	PT-937D				

RESERVOIR IDENTIFICATION NO:
 SIS-TANK-POT-100 (LT-934A)
 SIS-TANK-POT-100 (LT-934B)
 SIS-TANK-POT-100 (LT-934C)
 SIS-TANK-POT-100 (LT-934D)
 SIS-TANK-POT-100 (LT-935A)
 SIS-TANK-POT-100 (LT-935B)
 SIS-TANK-POT-100 (LT-935C)
 SIS-TANK-POT-100 (LT-935D)

FOR CONT. SEE DWG NO. 9321-F-2738
 LOOP 21 COLD LEG OF R.C.S.
 LOOP 22 COLD LEG OF R.C.S.
 LOOP 23 COLD LEG OF R.C.S.
 LOOP 24 COLD LEG OF R.C.S.

NOTE:
 FOR TESTING OF S.I.S. SYSTEM SEE FLOW DIAG. 8206119

INSIDE CONTAINMENT BUILDING
 INSIDE PRIMARY AUX. BUILDING
 FOR CONTINUATION SEE DWG. 9321-F-2735

EXCEPT FOR 856D 2"-250IR (TYP) 2"-150IR (TYP)

CONTAINMENT SUMP
 FOR CONT. SUMP PUMPS & LEVEL TRANSMITTERS SEE 9321-F-2719

NOTE:
 FLAGS INDICATE SYSTEM BOUNDARIES PER EXHIBIT "A" TO THE GAPD DASHED LINES ARE NOT ADDRESSED ON THIS DWG. FOR DASHED RHR LINES SEE DWG. 9321-F-2720

LEGEND
 RCS-REACTOR COOLANT SYSTEM
 SIS-SAFETY INJECTION SYSTEM
 CSS-CONTAINMENT SPRAY SYSTEM
 RHR-RESIDUAL HEAT REMOVAL SYSTEM
 RWST-REFUELING WATER STORAGE TANK
 LWPS-LIQUID WASTE PROCESSING SYSTEM

INSERVICE INSPECTION NOTES:
 1. CP=CONTAINMENT PENETRATIONS, ASME CLASS MC APPLIES.
 2. FOR NON-CODE PIPING PENETRATING CONTAINMENT & NOT CLASSIFIED QUALITY GROUP "A", "B" OR "C" QUALITY GROUP "MC" DESIGNATION SHALL BE APPLIED.

WORK THIS DWG WITH DWGS. 9321-F-2735 & A226076

NOTE:
 * LINES TO BE DIRECTED TO THAT SECTION OF THE SUMP CONTAINING THE RECIRCULATION PUMPS
 ** SEE DETAIL #2 ON DWG. NO. 206122
 *** INDICATES CONTROL VALVE HAS ADDITIONAL ASSOCIATED CONTROL EQUIPMENT AND IS REPRESENTED ON CONTROL VALVE HOOK-UP DETAIL DRAWING 9321-F-7056 AND FOR INSTRUMENT AND VALVE TAGGING SEE A242876.
 **** SEE DETAIL #4 ON DWG. NO. 206122

1. THE QUALITY GROUP A,B,C AND SEISMIC BOUNDARIES EXTEND TO THE FIRST SEISMIC SUPPORT/RESTRAINT BEYOND THE BOUNDARIES SHOWN.
 2. VALVE #1865 TO BE LOCKED CLOSED FOR DURATION OF PRESENT CYCLE TO REFUELING OUTAGE 2017 & THEN LOCKED OPEN AFTER REPAIR OF VALVE 839H.

FOR OTHER NOTES SEE 9321-F-2735

72 INCORPORATED EC-58811	4/6/16	VNR	APPROVAL SIGNATURES ON FILE	DATE	CR.	SUPV.	DESIGN ENGR.	SIS. ENGR.	ENG. MGR.																
<table border="1"> <tr> <td>F.A.</td> <td>W.J.KING</td> <td>10/23/87</td> <td></td> <td></td> <td></td> <td></td> <td></td> <td></td> <td></td> </tr> </table>										F.A.	W.J.KING	10/23/87													
F.A.	W.J.KING	10/23/87																							
<table border="1"> <tr> <td colspan="2">TITLE: FLOW DIAGRAM</td> <td colspan="2">STATION: INDIAN POINT</td> </tr> <tr> <td colspan="2">SAFETY INJECTION SYSTEM</td> <td colspan="2">Entergy</td> </tr> <tr> <td colspan="2">- UFAR FIGURE NO. 6.2-1 (SHT. 2)</td> <td colspan="2">DWG. NO. A235296-72</td> </tr> <tr> <td>BY: B. JOHN</td> <td>SCALE:</td> <td>REC'D:</td> <td>MY:</td> </tr> </table>										TITLE: FLOW DIAGRAM		STATION: INDIAN POINT		SAFETY INJECTION SYSTEM		Entergy		- UFAR FIGURE NO. 6.2-1 (SHT. 2)		DWG. NO. A235296-72		BY: B. JOHN	SCALE:	REC'D:	MY:
TITLE: FLOW DIAGRAM		STATION: INDIAN POINT																							
SAFETY INJECTION SYSTEM		Entergy																							
- UFAR FIGURE NO. 6.2-1 (SHT. 2)		DWG. NO. A235296-72																							
BY: B. JOHN	SCALE:	REC'D:	MY:																						