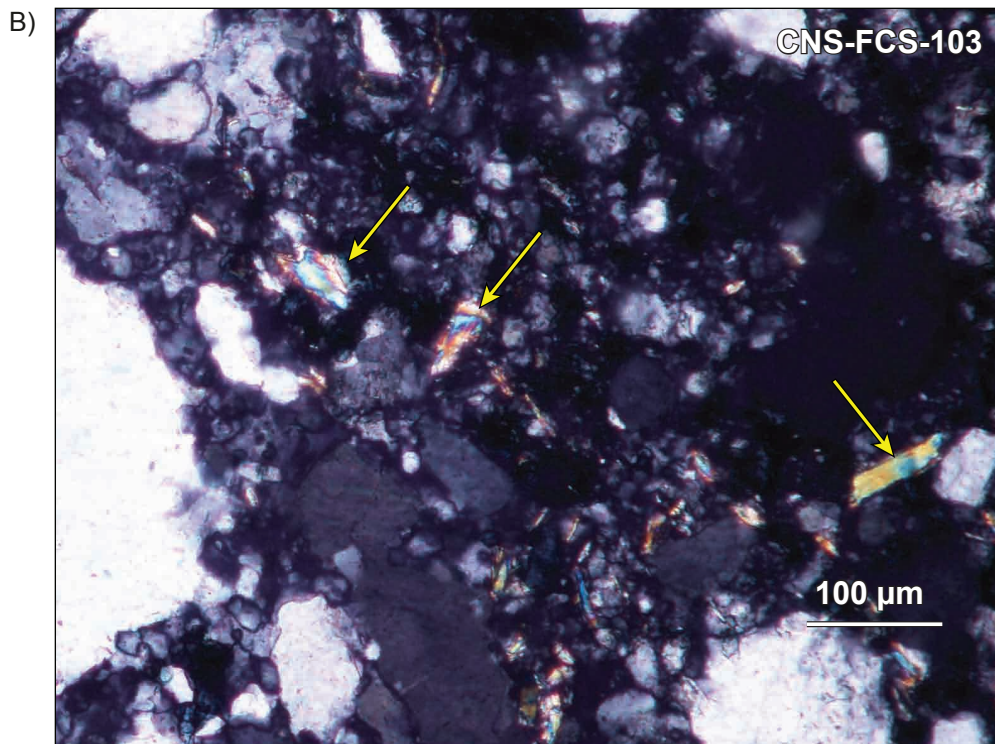


Photomicrograph thin section CNS-FC8-1A (cross-polarized light). Late- to post-kinematic white mica (yellow arrows) overgrowing ductile fabric.



Photomicrograph thin section CNS-FC-103 (cross-polarized light). Late- to post-kinematic white mica (yellow arrows) overgrowing brittle fabric.

WLS COL 2.5-1

WILLIAM STATES LEE III
NUCLEAR STATION UNITS 1 & 2

Late- to Post-Kinematic Mineralization
Overgrown Ductile Fabric and Brittle Fabric

FIGURE 2.5.1-236

Rev 8