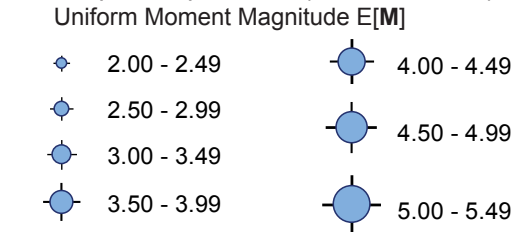


Explanation

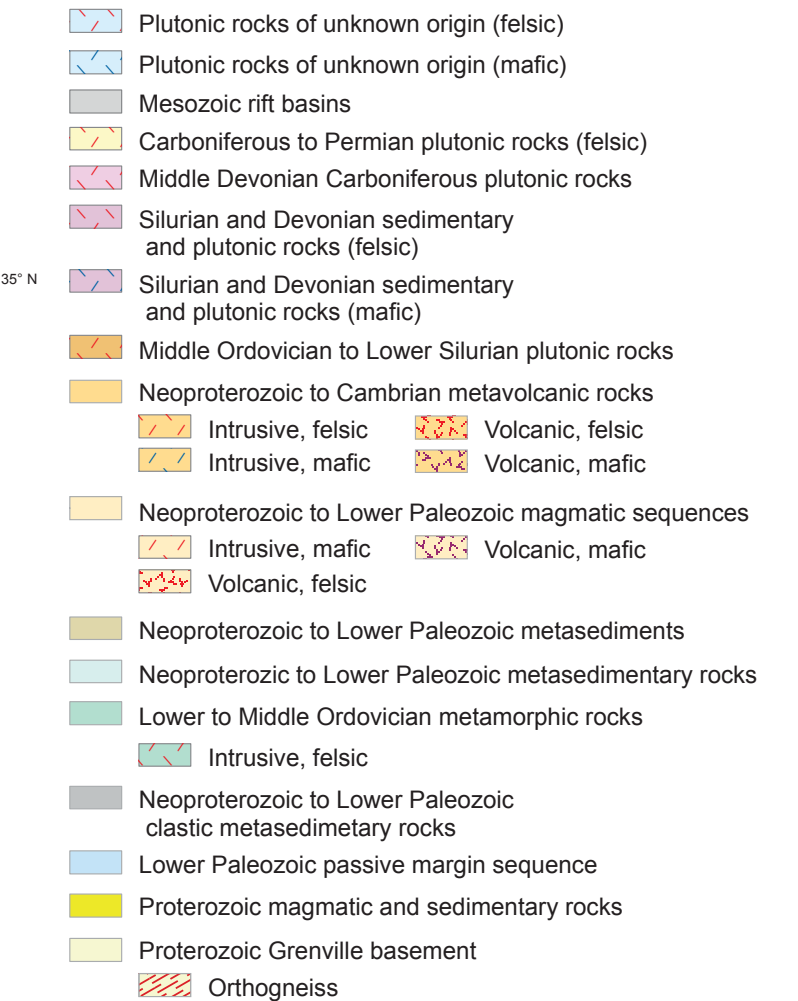
Earthquake Epicenters (NUREG - 2115)



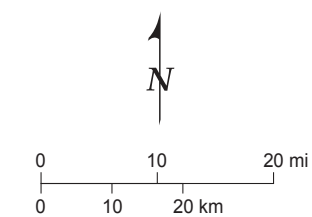
Faults



Lithotectonic Units (Hibbard et al. 2006)



WLS COL 2.5-1



WILLIAM STATES LEE III
NUCLEAR STATION UNITS 1 & 2

Tectonic Features and Seismicity
Within 50 Miles of the Site

FIGURE 2.5.1-210 Rev 8