

**AGRICULTURE**

- CROPLAND AND PASTURELAND
- OTHER AGRICULTURE

**BARREN LAND**

- ALTERED LANDS

**FOREST**

- PHRAGMITES DOMINATED OLD FIELD
- DECIDUOUS BRUSH/SHRUBLAND
- OLD FIELD (< 25% BRUSH COVERED)
- DECIDUOUS FOREST (10-50% CROWN CLOSURE)

**URBAN**

- INDUSTRIAL
- OTHER URBAN OR BUILT-UP LAND
- PHRAGMITES DOMINATED URBAN AREA
- RECREATIONAL LAND
- TRANSPORTATION/COMMUNICATION/UTILITIES
- UPLAND RIGHTS-OF-WAY DEVELOPED
- UPLAND RIGHTS-OF-WAY UNDEVELOPED
- RESIDENTIAL, RURAL, SINGLE UNIT

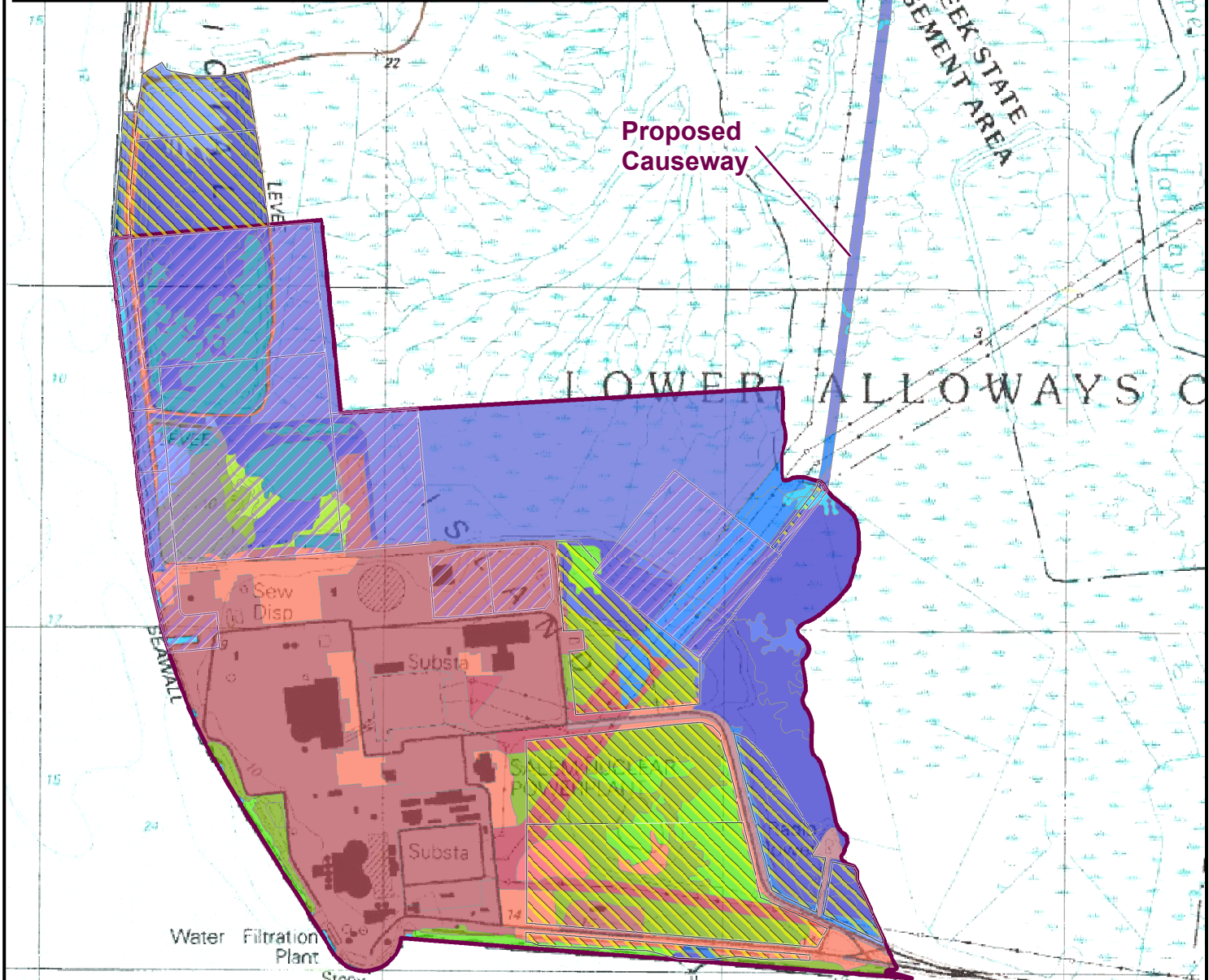
**LULC Type**

**WATER**

- ARTIFICIAL LAKES
- TIDAL RIVERS, INLAND BAYS, AND OTHER TIDAL WATERS

**WETLANDS**

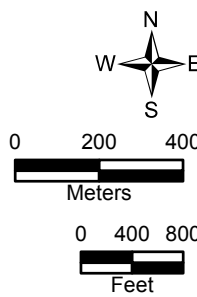
- FRESHWATER TIDAL MARSHES
- HERBACEOUS WETLANDS
- PHRAGMITES DOMINATED INTERIOR WETLANDS
- MANAGED WETLAND IN MAINTAINED LAWN GREENSPACE
- SALINE MARSH (LOW MARSH)
- PHRAGMITES DOMINATED COASTAL WETLANDS
- DECIDUOUS SCRUB/SHRUB WETLANDS
- DISTURBED WETLANDS (MODIFIED)
- WETLAND RIGHTS-OF-WAY
- FORMER AGRICULTURAL WETLAND (BECOMING SHRUBBY, NOT BUILT-UP)
- AGRICULTURAL WETLANDS (MODIFIED)
- MIXED SCRUB/SHRUB WETLANDS (CONIFEROUS DOM.)



**Proposed Causeway**

**Legend**

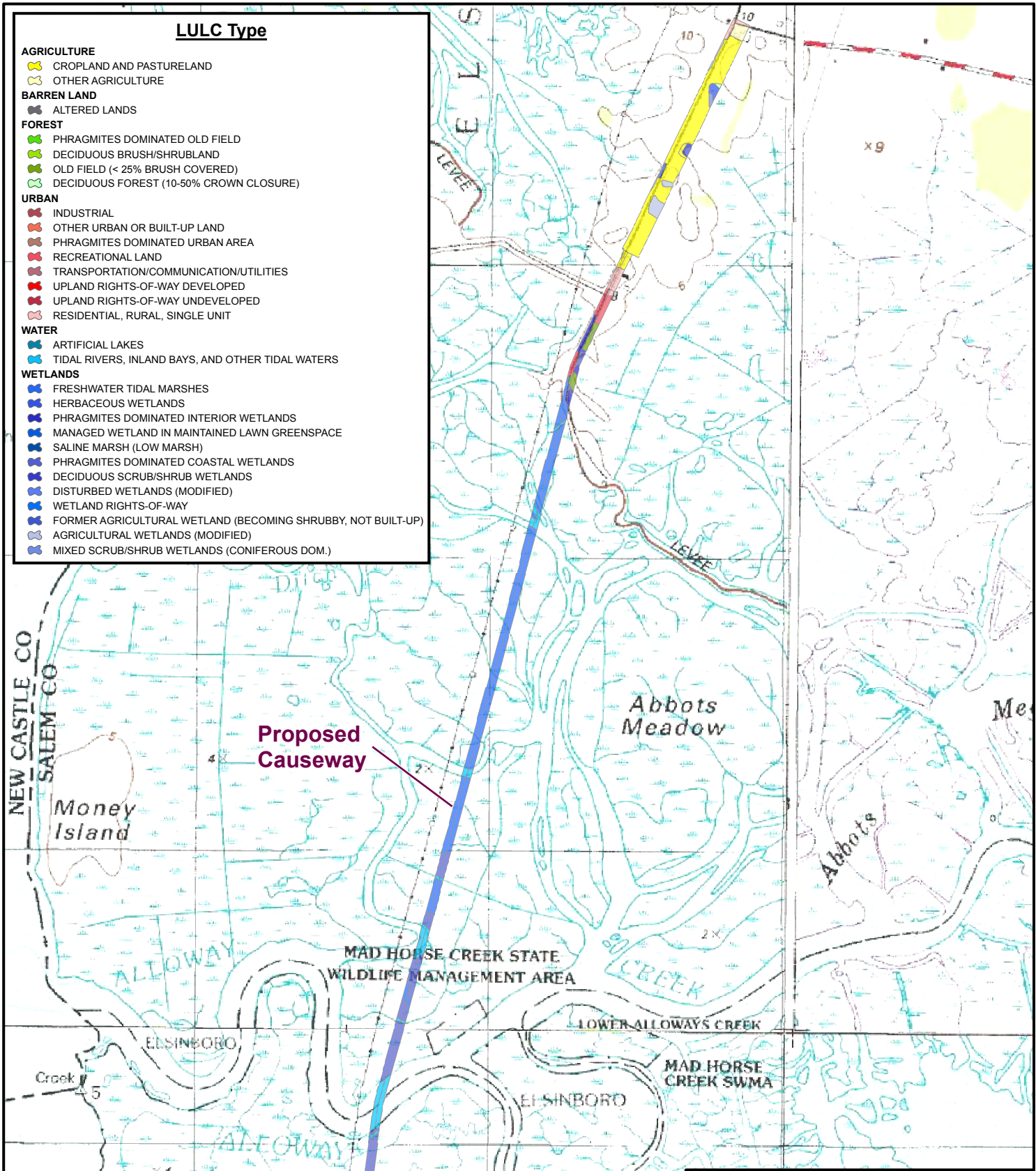
- Site Boundary **Type**
- Permanent Disturbance
- Temporary Disturbance



PSEG Power, LLC  
 PSEG Site ESPA  
 Part 3, Environmental Report  
 LULC  
 Impacted by Construction  
 (Sheet 1 of 2)  
 FIGURE 4.3-1 Rev 0

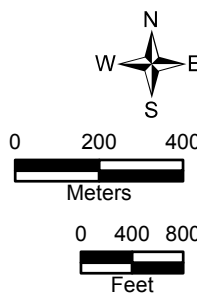
**LULC Type**

- AGRICULTURE**
  - CROPLAND AND PASTURELAND
  - OTHER AGRICULTURE
- BARREN LAND**
  - ALTERED LANDS
- FOREST**
  - PHRAGMITES DOMINATED OLD FIELD
  - DECIDUOUS BRUSH/SHRUBLAND
  - OLD FIELD (< 25% BRUSH COVERED)
  - DECIDUOUS FOREST (10-50% CROWN CLOSURE)
- URBAN**
  - INDUSTRIAL
  - OTHER URBAN OR BUILT-UP LAND
  - PHRAGMITES DOMINATED URBAN AREA
  - RECREATIONAL LAND
  - TRANSPORTATION/COMMUNICATION/UTILITIES
  - UPLAND RIGHTS-OF-WAY DEVELOPED
  - UPLAND RIGHTS-OF-WAY UNDEVELOPED
  - RESIDENTIAL, RURAL, SINGLE UNIT
- WATER**
  - ARTIFICIAL LAKES
  - TIDAL RIVERS, INLAND BAYS, AND OTHER TIDAL WATERS
- WETLANDS**
  - FRESHWATER TIDAL MARSHES
  - HERBACEOUS WETLANDS
  - PHRAGMITES DOMINATED INTERIOR WETLANDS
  - MANAGED WETLAND IN MAINTAINED LAWN GREENSPACE
  - SALINE MARSH (LOW MARSH)
  - PHRAGMITES DOMINATED COASTAL WETLANDS
  - DECIDUOUS SCRUB/SHRUB WETLANDS
  - DISTURBED WETLANDS (MODIFIED)
  - WETLAND RIGHTS-OF-WAY
  - FORMER AGRICULTURAL WETLAND (BECOMING SHRUBBY, NOT BUILT-UP)
  - AGRICULTURAL WETLANDS (MODIFIED)
  - MIXED SCRUB/SHRUB WETLANDS (CONIFEROUS DOM.)



**Legend**

- Site Boundary **Type**
  - Permanent Disturbance
  - Temporary Disturbance



<p>PSEG Power, LLC</p> <p>PSEG Site ESPA</p> <p>Part 3, Environmental Report</p>
<p>LULC</p> <p>Impacted by Construction</p> <p>(Sheet 2 of 2)</p>
<p>FIGURE 4.3-1</p>