

Figure 2.5S.1-10 Geologic Features of the Gulf Coast Region

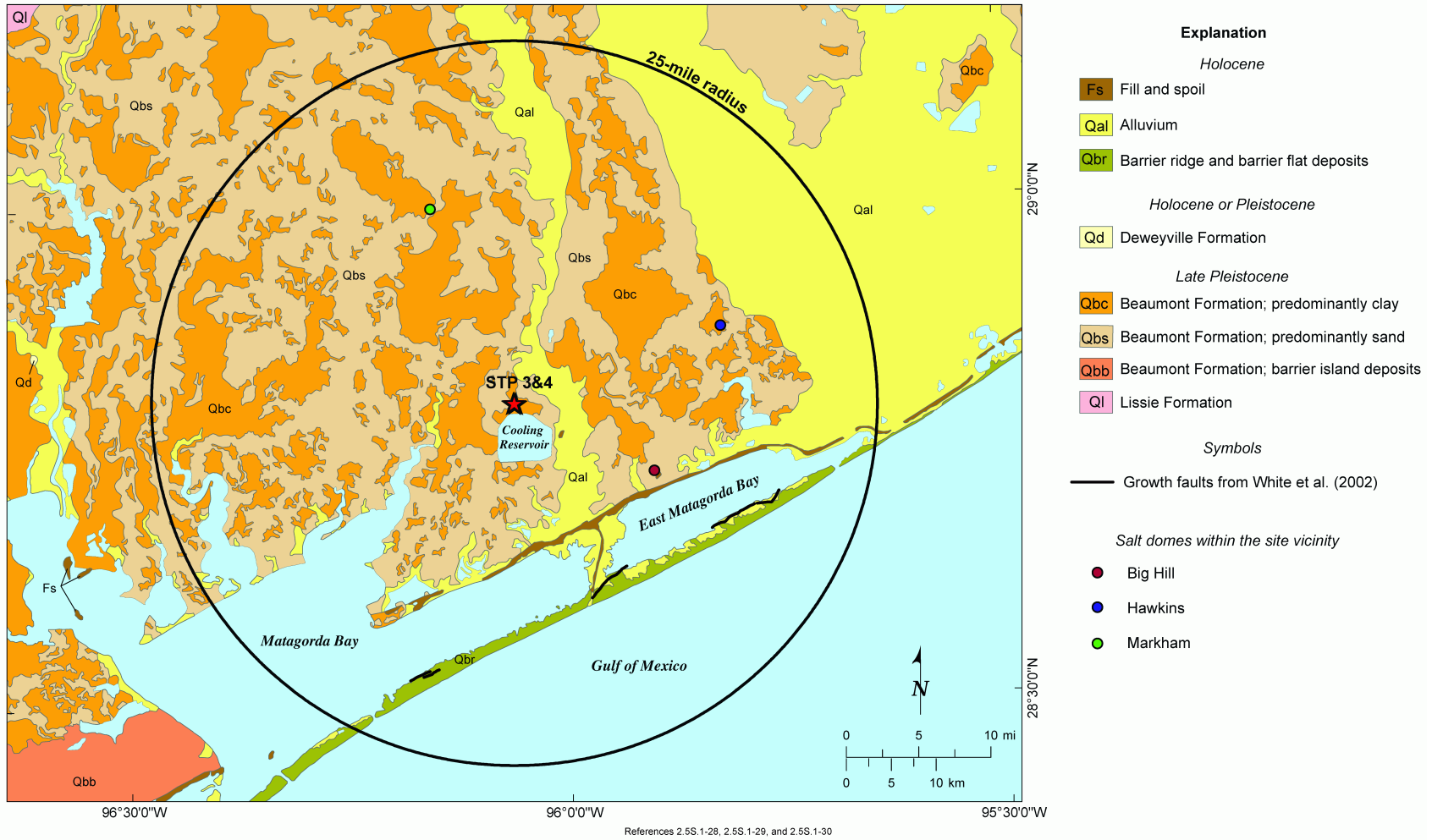
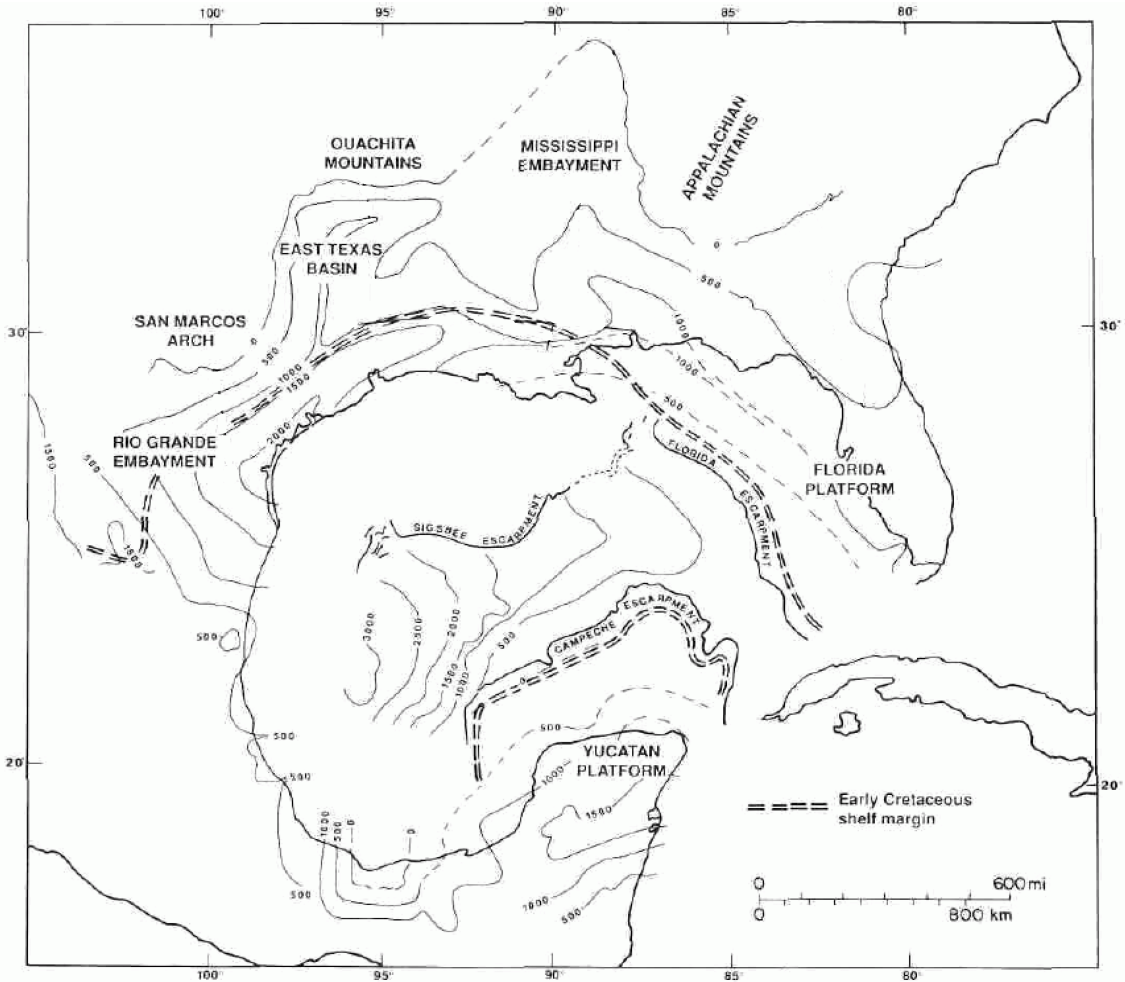


Figure 2.5S.1-11 Site Vicinity Geologic Map (25-mile radius)



Note: Thicknesses are in meters

(Reference 2.5S.1-32)

Figure 2.5S.1-12 Upper Cretaceous Isopach Map

ERATHEM	SYSTEM	SERIES	AGE m.y.	STP	Approximate Thickness Undifferentiated (feet)	Approximate elevation of formation top (feet)	Hydrostratigraphy	
CENOZOIC	QUATERNARY	Holocene	0.10	Undifferentiated Deweyville Terrace Deposits	0-50		Coastal Lowlands Aquifer System	
		Pleistocene		2	Beaumont Fm Lissie Fm Willis Formation	400 600-700		0+ -400
		Pliocene	5	Goliad sand	800 to 1,000	-1,000 to -1,100		Evangeline aquifer
	TERTIARY	Miocene	24	Fleming Formation Oakville Sandstone	3,400 to 4,500	-1,800 to -2,100	Burkeville Confining System	
				Oligocene	38	Catahoula Sand Anahuac Formation Frio Formation	3,000	-5,200 to -6,600
		Frio Clay (Vicksburg Group)	200			-8,200 to -9,600	Vicksburg - Jackson Confining System	
		Eocene	58	Whitsett Manning clay Welborn	500 to 1,100	-8,400 to -9,800		
				Claiborne Group	Caddell Yegua	1,400 to 4,500		-8,900 to -10,900
					Cook Mountain Sparta Sand Weches Fm Queen City Snd Reklaw Fm Carrizo			
		Paleocene	66	Wilcox Group	Undifferentiated	2,000	-10,300 to -15,400	Upper Claiborne Aquifer Middle Claiborne Confining System Middle Claiborne Aquifer Confining System Lower Claiborne-Upper Wilcox Aquifer Middle Wilcox Aquifer
				Midway Grp	Wills Point Kincaid Fm	2,500	-12,300 to -17,400	Not Present Midway Confining System

(Reference 2.5S.1-25)

Figure 2.5S.1-13 General Cenozoic Stratigraphic Column

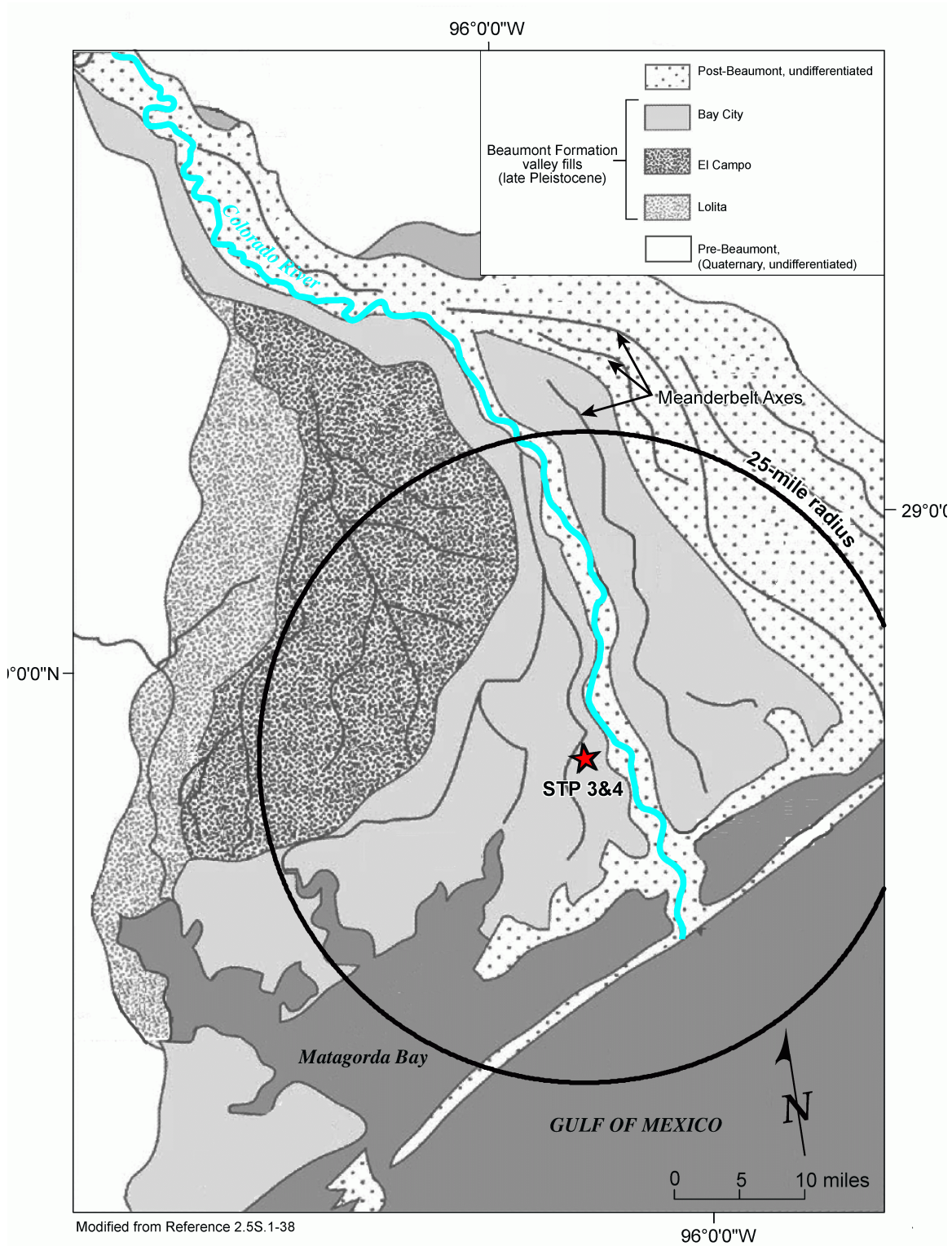
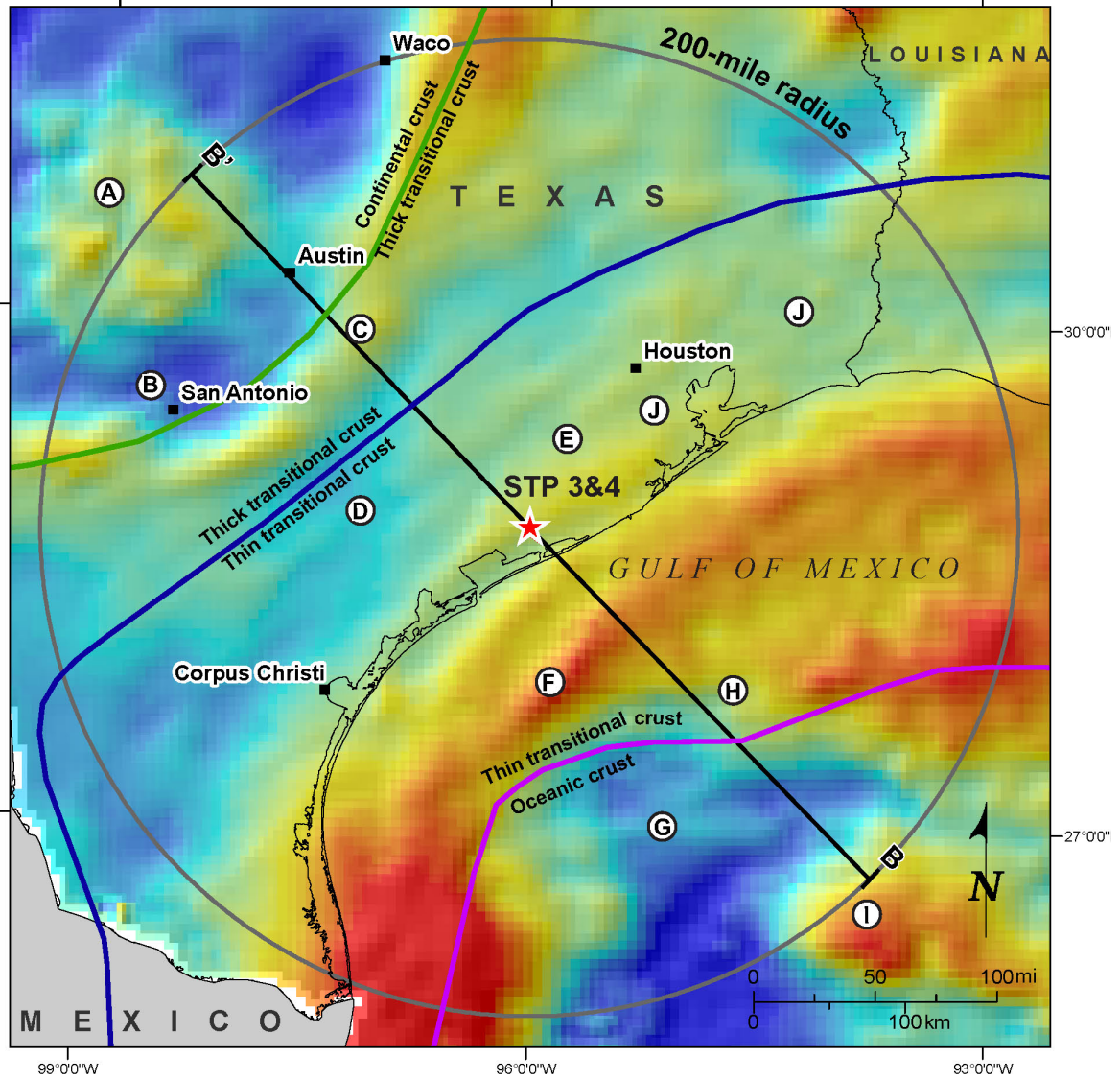


Figure 2.5S.1-14 Fluvial Deposits of the Colorado River



References 2.5S.1-43, 2.5S.1-44, and 2.5S.1-45

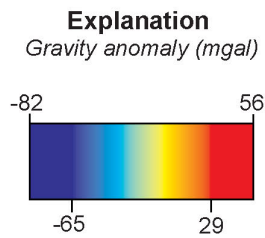
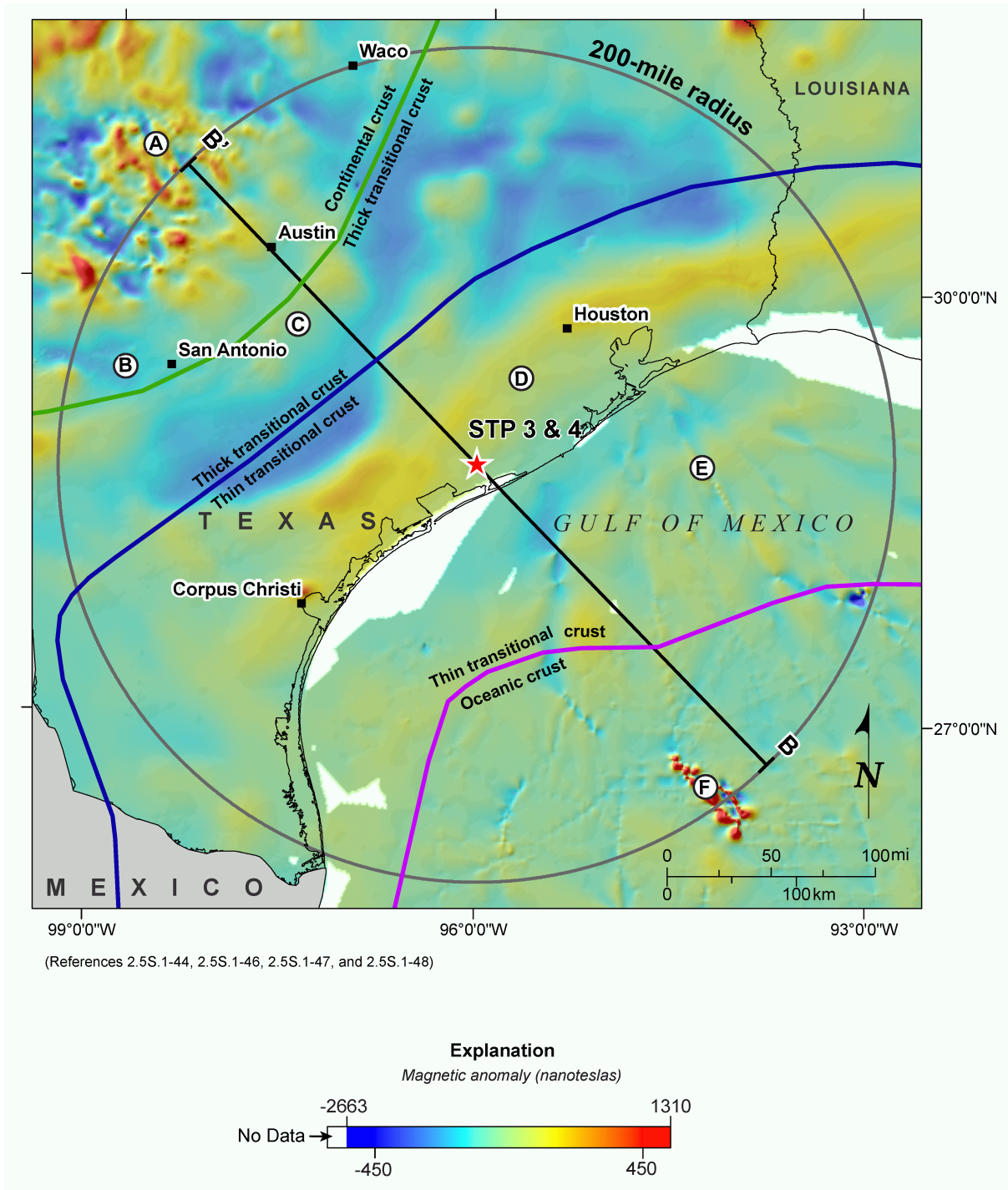
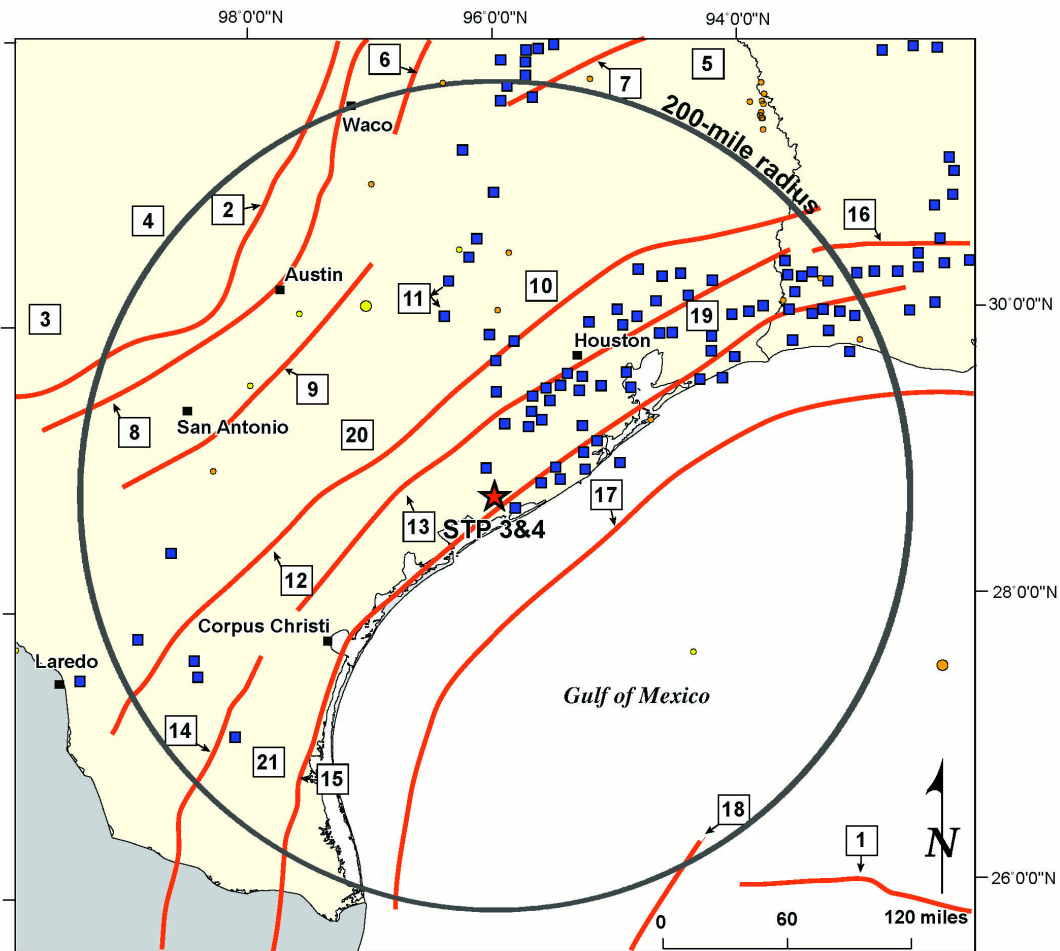


Figure 2.5S.1-15 Gravity Anomaly Features in Site Region (200-mile radius)





Tectonic Features (Reference 2.5S.1-27)			Earthquake Epicenters (by estimated body wave magnitude Emb)	
1 Sigsbee Escarpment	10 Houston Embayment	19 Sabine Arch	EPR1 1986 Seismicity Catalog (1627-1985)	Updated Seismicity Catalog (1847-2006)
2 Ouachita Orogenic Front	11 Salt Diapirs (■)	20 San Marcos Arch	● 3.00 - 3.99	● 3.00 - 3.99
3 Kerr Basin	12 Wilcox Fault Zone	21 Rio Arch	● 4.00 - 4.99	● 4.00 - 4.99
4 Llano Uplift	13 Yegua Fault Zone			
5 Sabine Uplift	14 Vicksburg Fault Zone			
6 Mexia Fault System	15 Frio Fault Zone			
7 Mt. Enterprise-Elkhart Graben Fault Zone	16 Tepetate Fault Zone			
8 Balcones Fault Zone	17 Corsair Fault Zone			
9 Luling Fault Zone	18 Perdido Fold Belt			

Figure 2.5S.1-17 Tectonic Features in Site Region (200-mile radius)

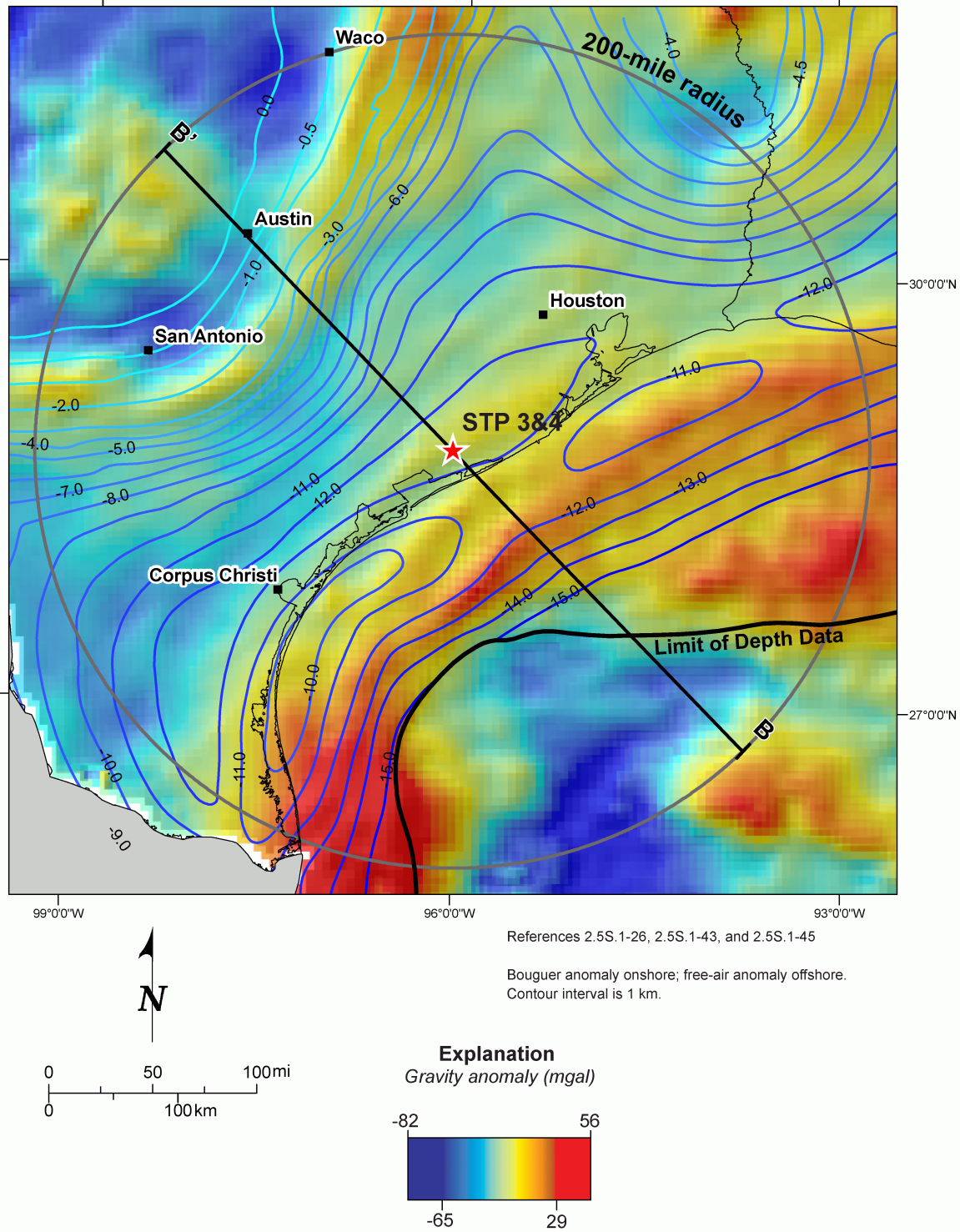


Figure 2.5S.1-18 Gravity Anomaly and Depth to Base of Mesozoic Sediments