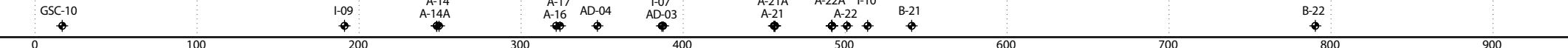


NOTE: Borehole stick logs were shifted from their actual horizontal location for clarity. Actual horizontal locations of boreholes are shown below.



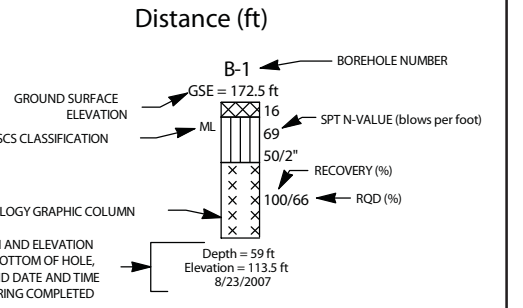
LEGEND

- S-1 Soil Layer 1
- SAV-1 South Reactor Avon Park Rock Layer 1
- ⊗ Top of Rock
- ⊗* Top of Rock is determined from adjacent offset borehole designated as the same borehole number with a letter A postscript

LITHOLOGY GRAPHICS

- | | | | |
|--|--|--|--|
| | | | |
| | | | |
| | | | |
| | | | |

BOREHOLE LEGEND



LINE IS ONE INCH WHEN PRINTED TO SCALE
 0 1"
 VERTICAL SCALE: 1" = 80.0'
 HORIZONTAL SCALE: 1' = 70.0'

Duke Energy Florida
 Levy Nuclear Plant
 Units 1 and 2
 Part 2, Final Safety Analysis Report
 Subsurface Cross Section at
 LNP 1: Plant North to South
 FIGURE 2.5.4.2-202A