

## Atlantic Subtropical Anticyclone Seasonality

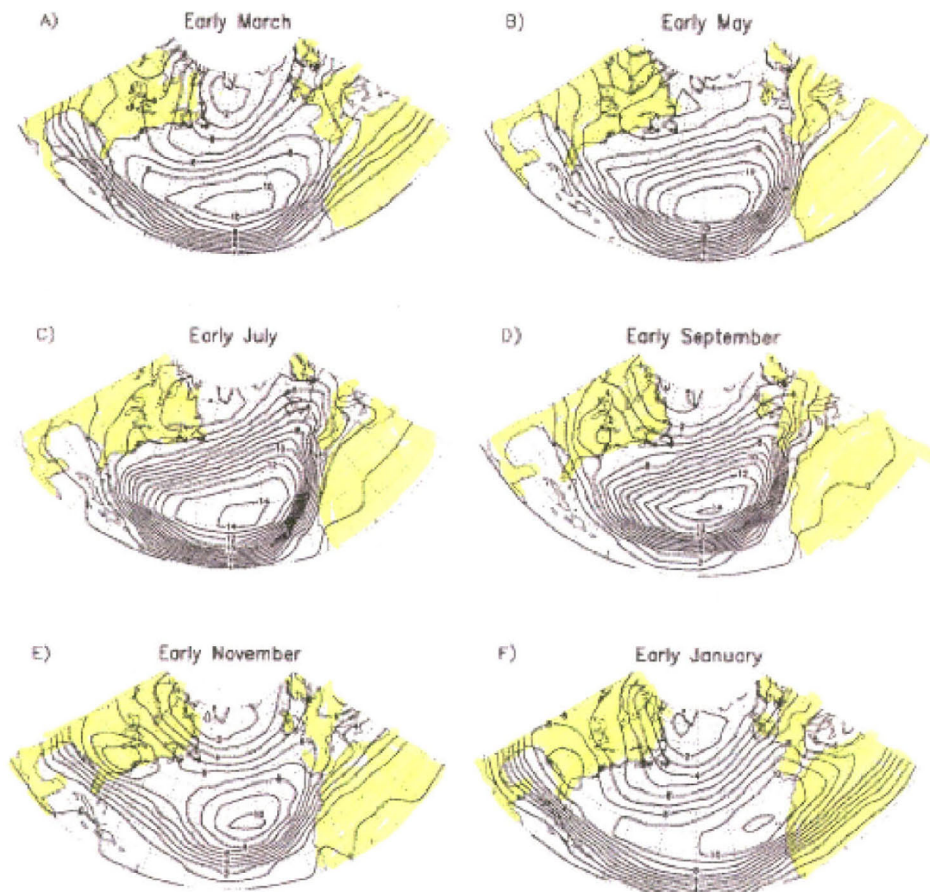


FIG. 2. Average number of days with sea level pressure  $\geq 1020$  mb in the first half of (a) March, (b) May, (c) July, (d) September, (e) November, and (f) January.

Reference: The North Atlantic Subtropical Anticyclone, Robert E. Davis, Bruce P. Hayden, David A. Gay, William L. Phillips, and Gregory V. Jones, *Department of Environmental Sciences, University of Virginia, Charlottesville, Virginia, Journal of Climate*: Vol. 10, No. 4, pp. 728–744, August 22, 1996.

WLS COL 2.3-1

WILLIAM STATES LEE III  
NUCLEAR STATION UNITS 1 & 2

Normal Sea Level Pressure Distribution  
Over North America and the North Atlantic Ocean

FIGURE 2.3-204

Rev 0