

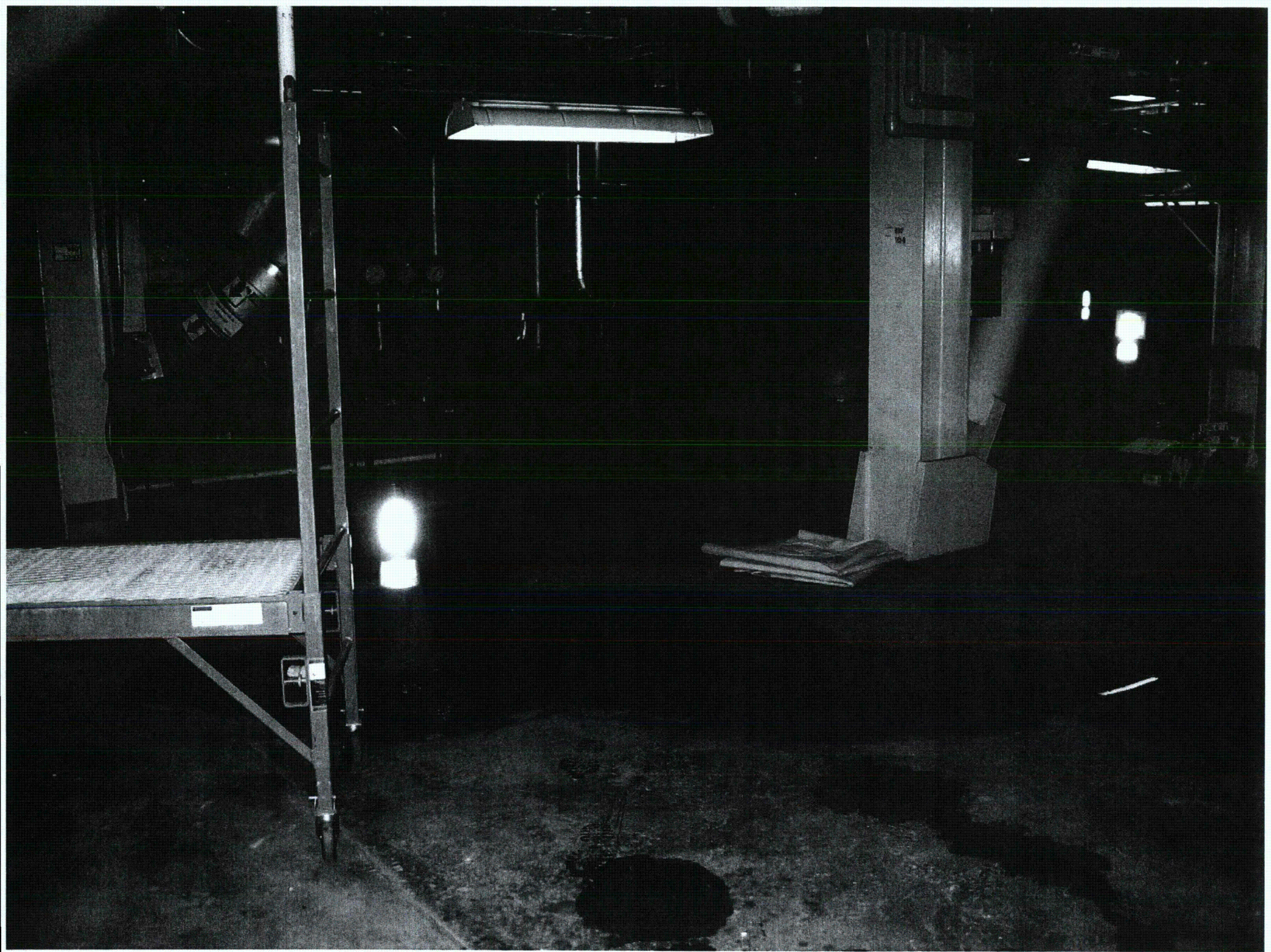
CAUTION  
WET FLOOR

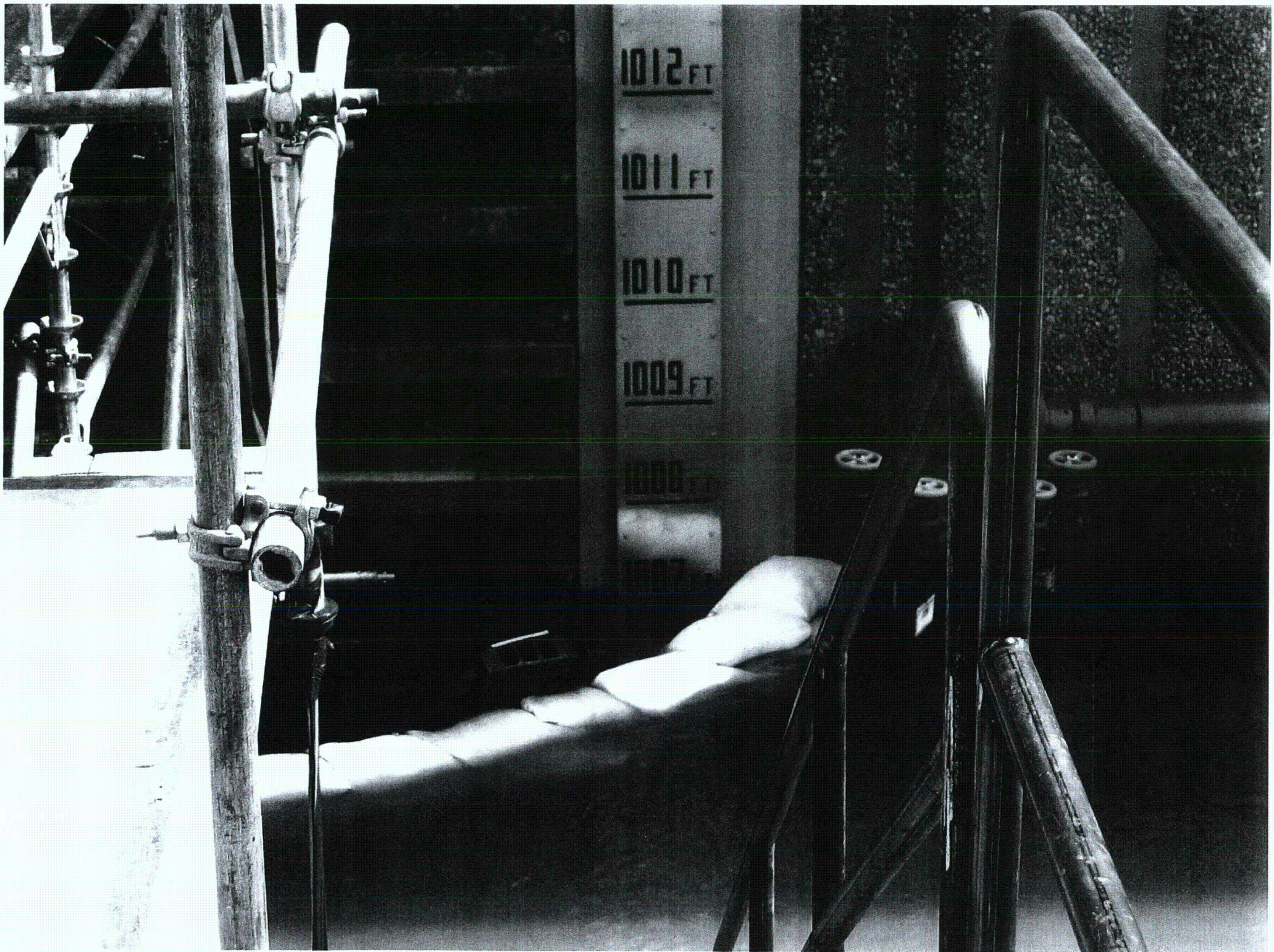
ALLIS

FOR  
SALES

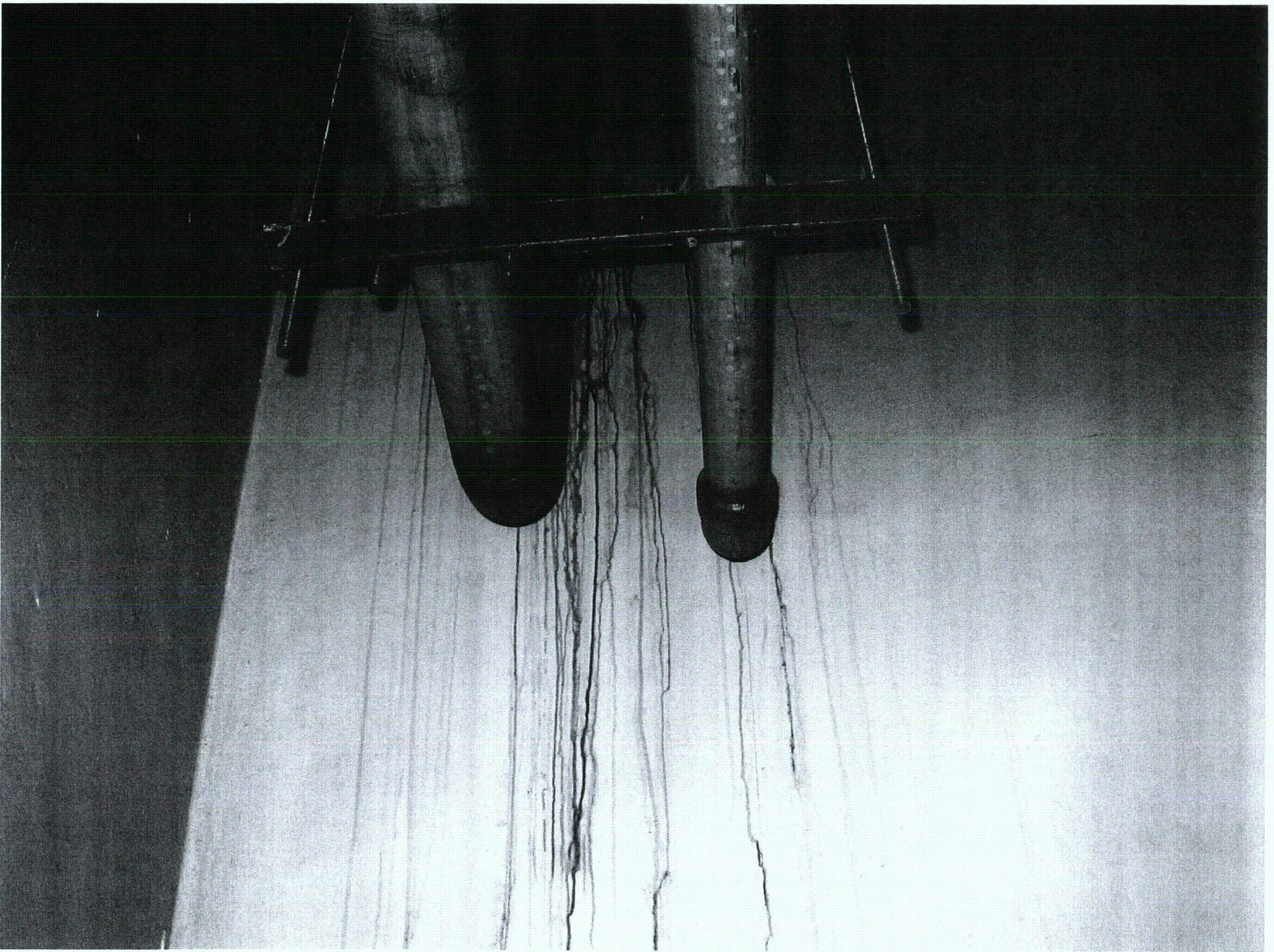
WET FLOOR





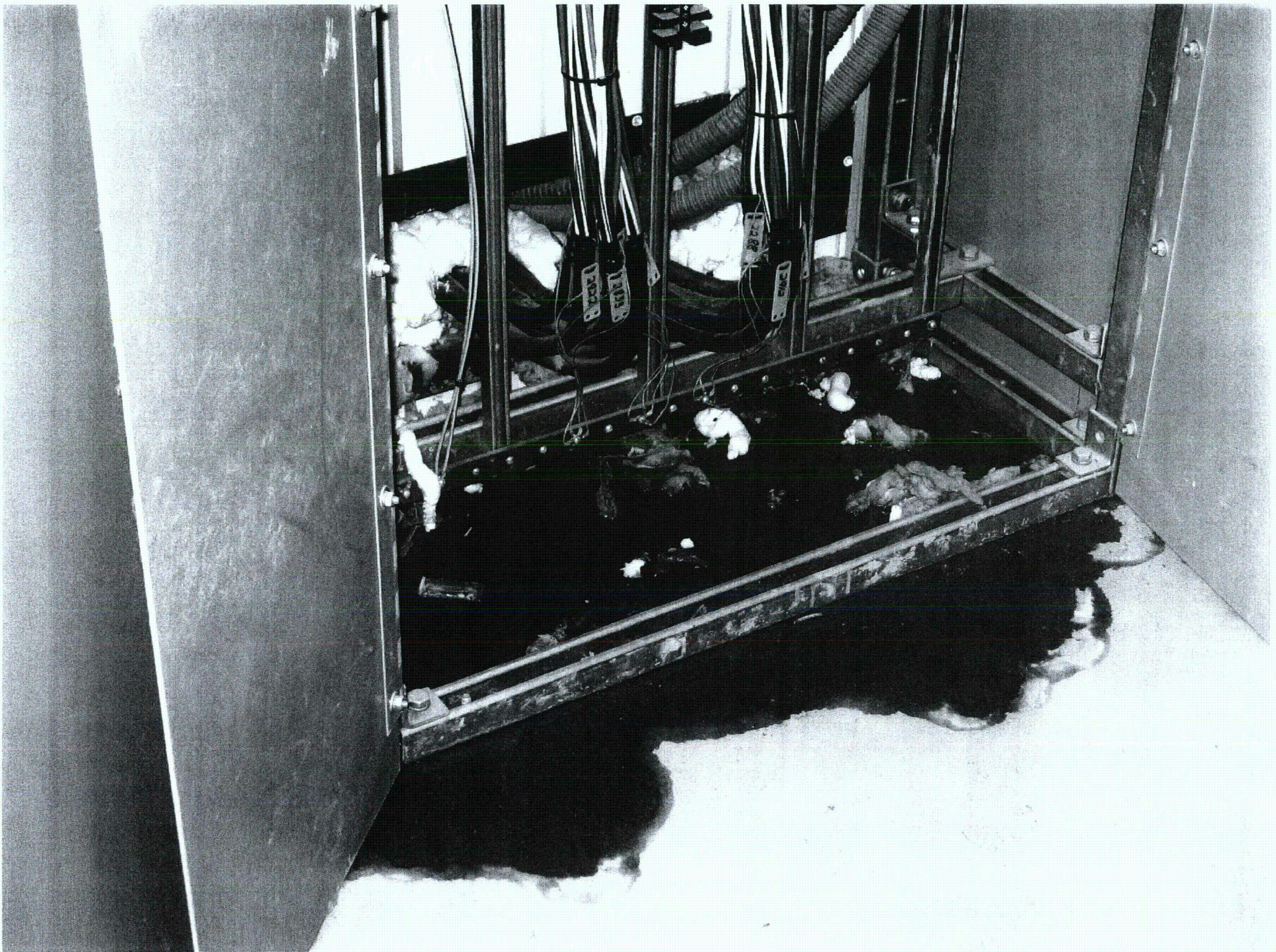


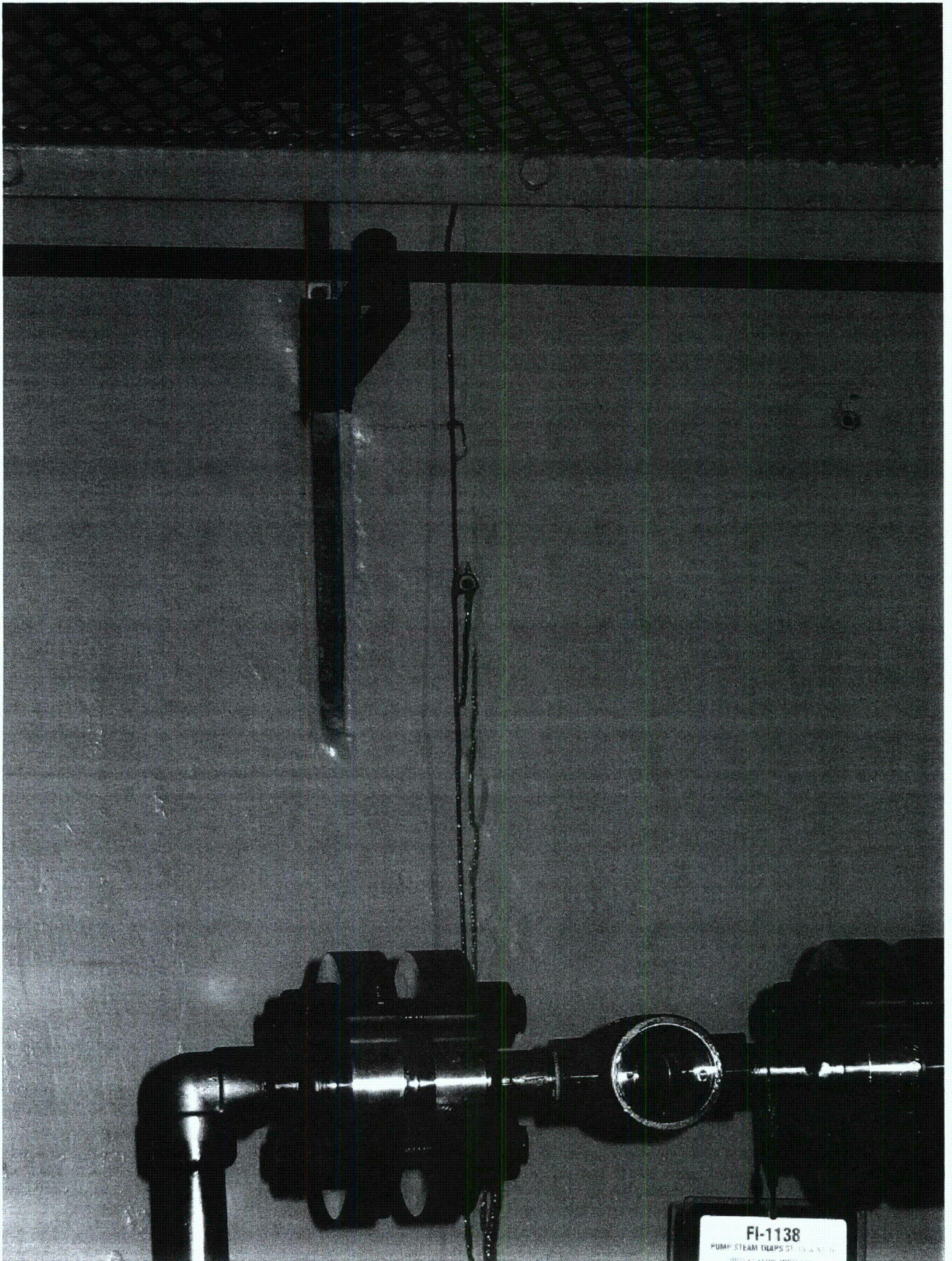
IS-N-2    IS-N-4  
IS-N-3    IS-N-5



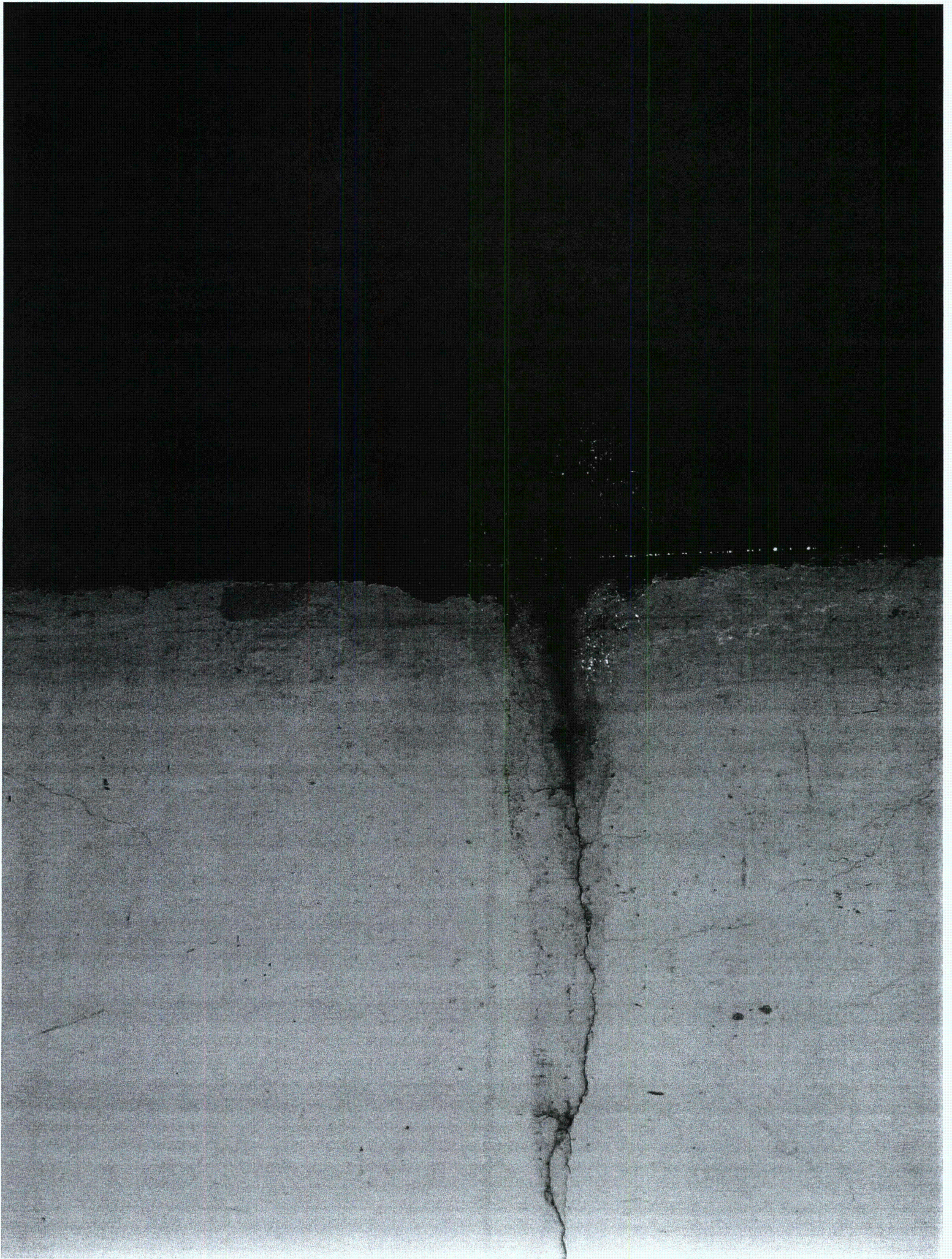


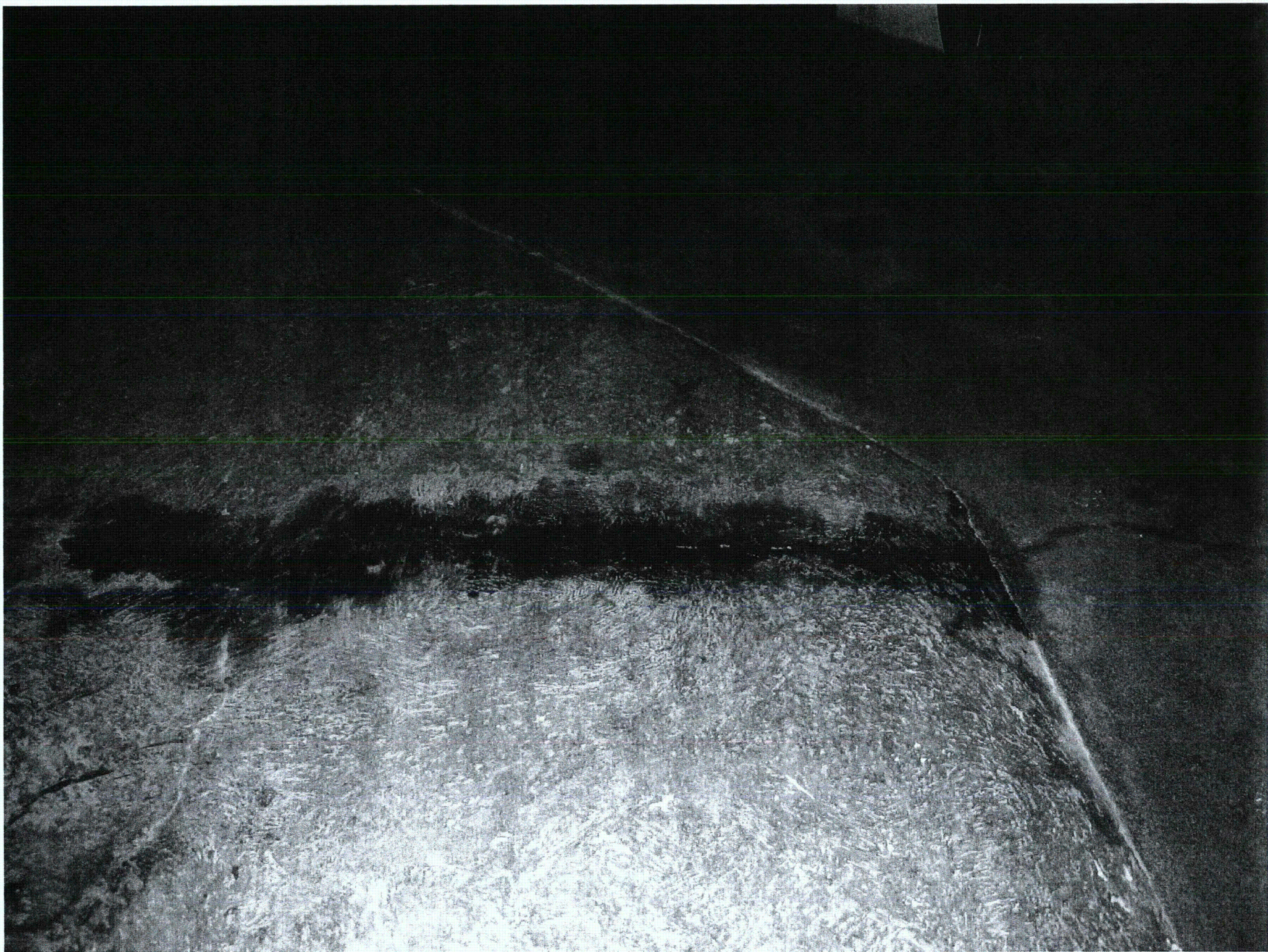


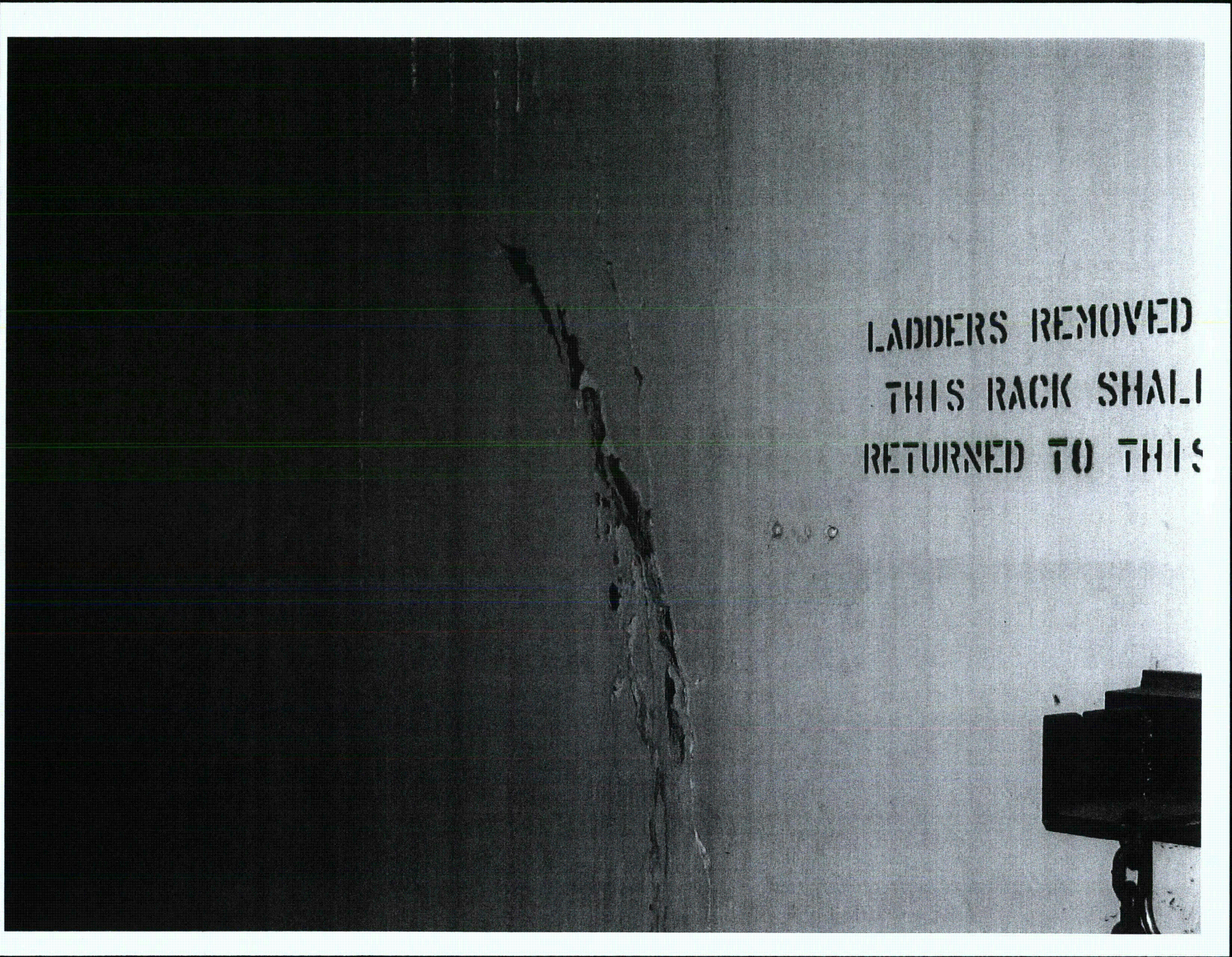




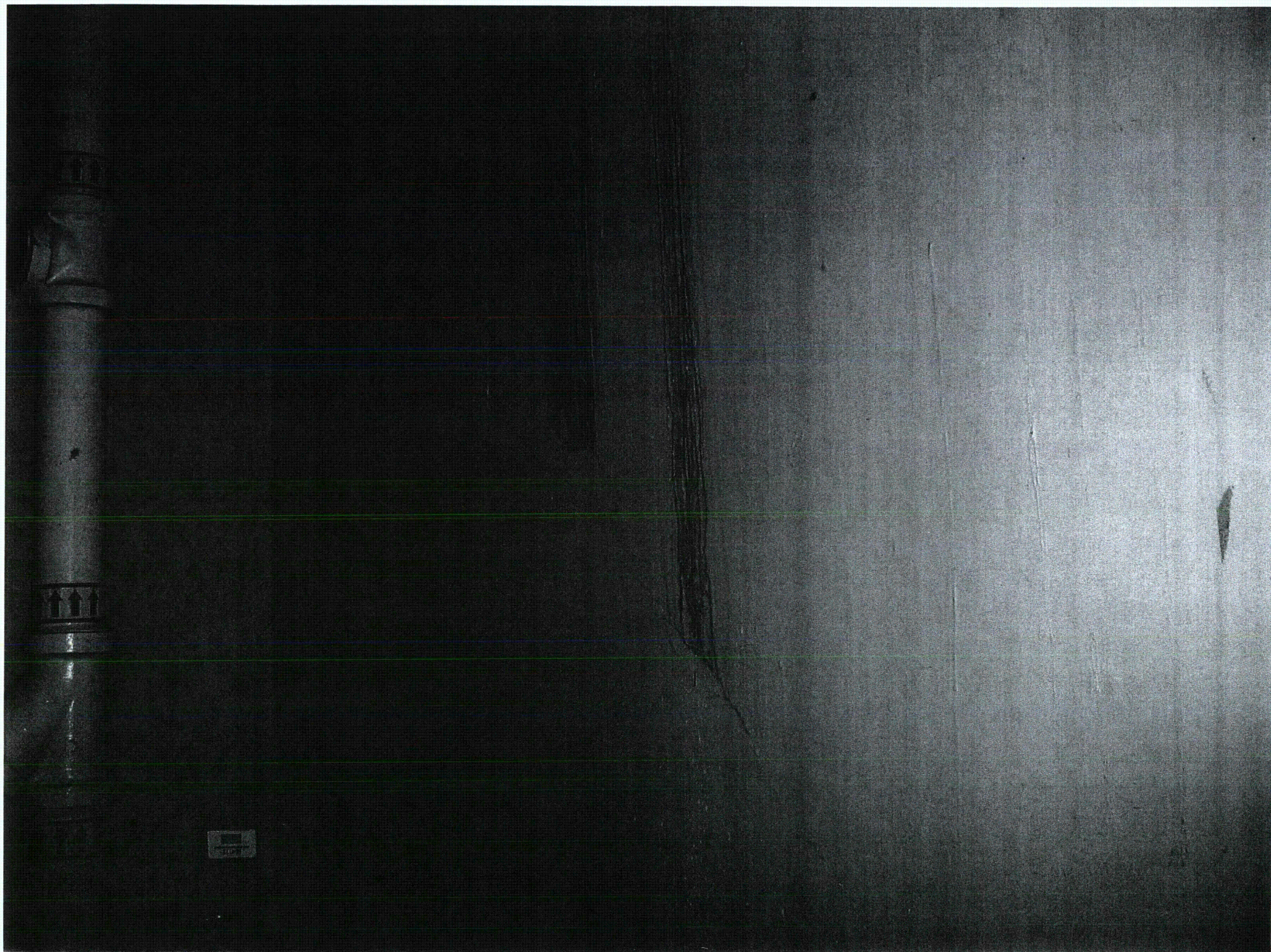
FI-1138  
PUMP STEAM TRAPS ST-15 & ST-16  
001111 001111 001111 001111

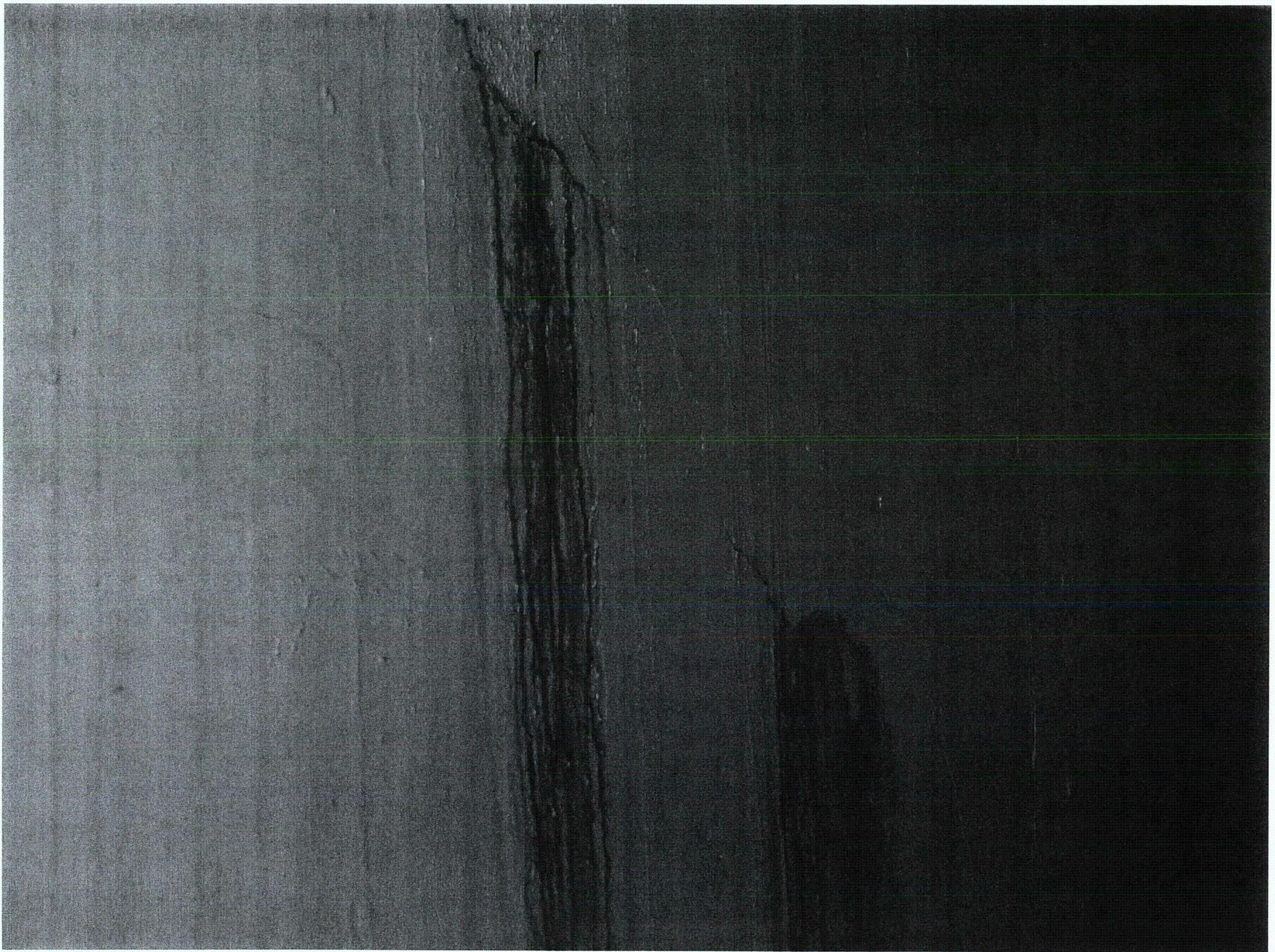


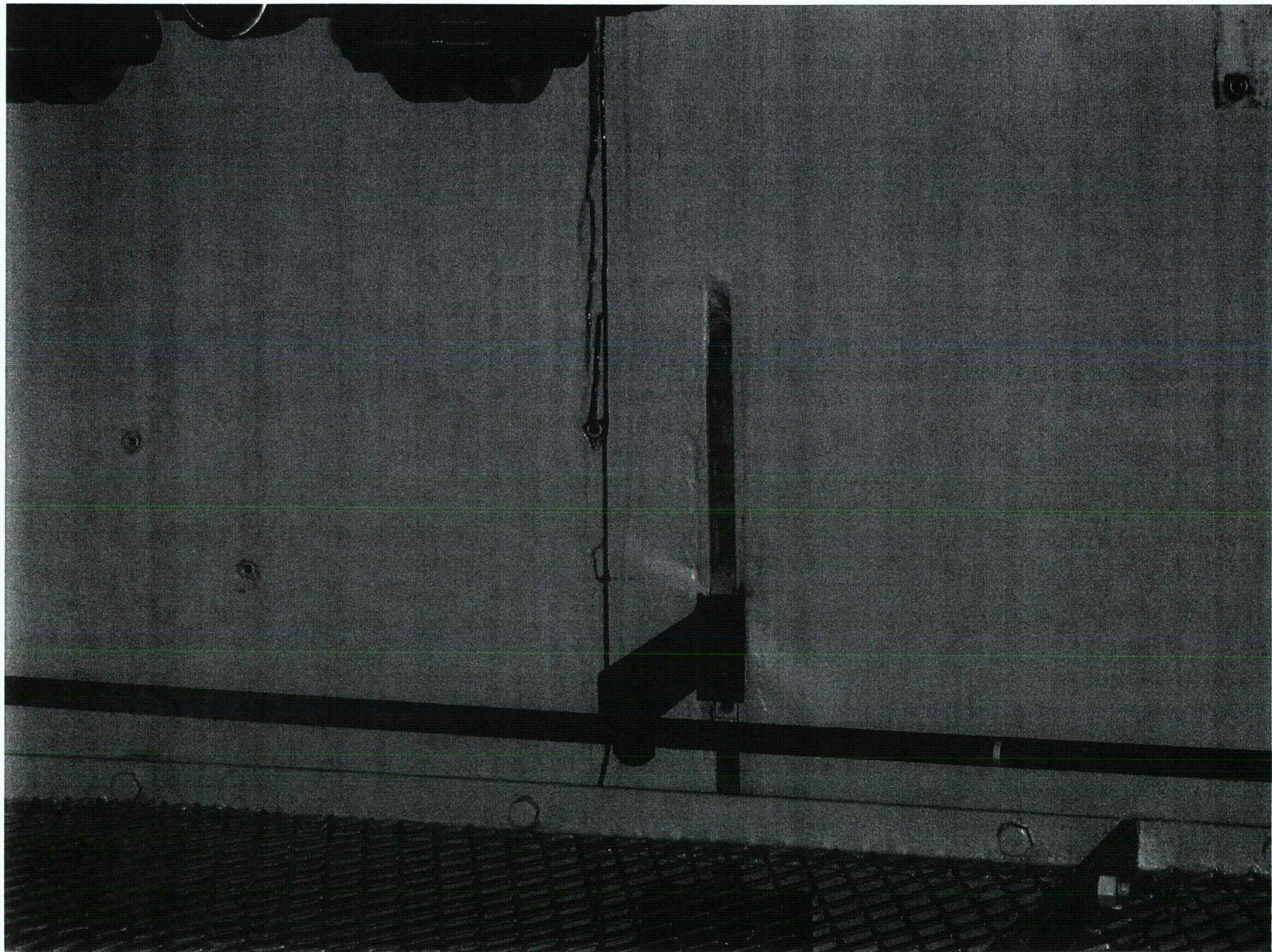


A black and white photograph showing a wall with a prominent vertical crack on the left side. To the right of the crack, there is a sign with three lines of text. The sign is partially obscured by a dark object in the bottom right corner. The wall appears to be made of concrete or a similar material.

LADDERS REMOVED  
THIS RACK SHALL  
RETURNED TO THIS









FI-1138  
PUMP STREAM TRAPS ST-15 & ST-16  
OUTLET FLOW INDICATOR

DANGER DANGER DANGER  
2011-REFUELING OUTFAGE-00707  
POSITIVE CLOSURE  
PUMP STREAM TRAPS ST-15 & ST-16 OUTLET  
FLOW INDICATORS BYPASS VALVE  
AUG 19 09W3 48 3A V C

DANGER  
DO NOT OPERATE  
THIS EQUIPMENT

DANGER DANGER DANGER DANGER  
2011-REFUELING OUTFAGE-00707  
POSITIVE CLOSURE  
PUMP STREAM TRAPS ST-15 & ST-16 OUTLET  
FLOW INDICATORS BYPASS VALVE  
AUG 19 09W3 48 3A V C

DANGER  
DO NOT OPERATE  
THIS EQUIPMENT

