

## Appendix A

### Geographical Boundaries of ERPAs

Sector/ERPA	Geographical Boundaries
A-2 – Limestone County	Beginning at Poplar Creek and the Tennessee River, proceed east on dirt road past Shaw Road 3/4 mile, south on Mack Road to Lawngate Road, east on Lawngate Road, then south on Brownsferry Road. Continue due south to north bank of the Tennessee River.
B-2 – Limestone County	Follow power line north from Tennessee River to Cowford Road, then to the intersection of Nuclear Plant Road, continue northwest to intersection of Lawngate and Brownsferry Roads, south on Brownsferry Road, then south to the Tennessee River.
F-2 – Lawrence County	Beginning on County Road 387 (east of Flower Hill), go southeast along the Wheeler Reservation boundary to the shoreline of the south side of the Tennessee River, then go northwest along the shoreline until it meanders back to the point of beginning at County Road 387.
G-2 – Lawrence County	Beginning at a point on County Road 400 at Flower Hill at intersection of County Road 387, go east on County Road 387 to the south shoreline of the Tennessee River, then go west along the shoreline to the Mallard Creek Bridge (County Road 400). Proceed north on County Road 400 to power line, continue due north from power line to the south shoreline of the Tennessee River, then go east along the shoreline of the Tennessee River as it meanders around the Mallard Creek Public Use Area, and back to the Mallard Creek Bridge on County Road 400.
A-5 – Limestone County	Follow Petty Branch north to intersection of Friend Road and Fielding Road, north on Fielding to Snake Road, then east on Snake Road. Proceed east-southeast to Grubbs Road, then east on Grubbs, south on Blackburn Road to Ripley Road. Proceed east-southeast on Ripley Road to Brownsferry Road, southwest on Brownsferry Road, west on Lawngate Road, then north on Mack Road 1/2 mile, due west to Poplar Creek and the Tennessee River.
B-5 – Limestone County	Follow power lines from Tennessee River to Cowford Road, north to the intersection of Nuclear Plant Road, northwest across county to intersection of Lawngate and Brownsferry Road. Proceed northeast on Brownsferry Road to Huntsville-Brownsferry Road, south on Huntsville-Brownsferry Road 1 1/4 miles to Neely Road, south on Neely Road. Continue south on Neely Road and then on Settle Road to the mouth of Mud Creek and the Tennessee River.
E-5 – Morgan County	Beginning at the intersection of Lawrence County line and State Highway 20, go north along the county line to the Limestone County line on the Tennessee River, east along the county line (on water) to Finley Island Road, south on Finley Island Road to State Highway 20, west on Highway 20 to point of beginning.
F-5 – Lawrence County	Beginning at Flower Hill on County Road 400 go east on County Road 387 to the Wheeler Reservation boundary, then follow the Wheeler Reservation boundary to the Lawrence-Morgan County line. Follow the Lawrence-Morgan County line south to State Highway 20, then go west on State Highway 20 to County Road 432 to the intersection of County Road 433, then west and north on County Road 433 until it intersects again with State Highway 20. Go west on State Highway 20 to the intersection of County Road 400, then north on County Road 400 to Flower Hill.
G-5 – Lawrence County	Beginning at Flower Hill proceed south on Mallard Creek Road (County Road 400) to State Highway 20. Go west on State Highway 20 approximately 1 mile to County Road 383, north approximately 3/4 mile to the intersection of County Road 384, then west, north and east along County Road 384. Go back to County Road 383, then north on County Road 383 to the intersection of County Road 387, then west approximately 1 mile on County Road 387 to intersection of County Road 423. Go north and east to the end of County Road 423, then due north to the Lawrence County line on the Tennessee River, then east-southeast along the Lawrence County line to the power line on County Road 400, then south on Mallard Creek Road (County Road 400) back to Flower Hill.
A-10 – Limestone County	Starting at Elk River Mills Dock, follow 10-mile EPZ to Elk River Mills Road east to Big Creek. Follow secondary road north of Big Creek to Buck Island Road, then south on Buck Island Road to Athens, south on Jefferson Street, southwest on Brownsferry Road to Reid, west 1 mile on Reid Road, then north for 1 1/2 miles on Blackburn Road. Proceed west on Grubbs Road, then northwest to Snake Road, north on Gordon Road to New Cut Road; follow New Cut Road to Baker Hill Road, then north on Baker Hill Road; follow Elk River Mills Road to the Elk River Mills Dock.
B-10 – Limestone County	Starting at a point due south of Mud Creek, go north on Neely Road from Bridgeforth

Sector/ERPA	Geographical Boundaries
	Road to Brownsferry Road, northeast on Brownsferry Road to intersection of Jefferson and Washington Streets in Athens, east on Washington Street to Clinton Street. Follow Clinton Street to Highway 72, proceed east on Highway 72 to Highway 31, south on Highway 31 to Highway 20, southeast on Highway 20 to the Tennessee River.
C-10 – Morgan County	Beginning at Limestone County line and Finley Island Road, go south on Finley Island Road to Woodall Road, south on Woodall Road to State Highway 24, east on Highway 24 to Moulton Street (Highway 24). Go east on Moulton Street to the railroad, north on the railroad to the Tennessee River, northwest on river to Finley Island Road and Limestone County.
D-10 – Morgan County	Beginning at Woodall Road and Highway 24, go south on Woodall Road (Shady Grove Lane) to Modaus Road, east on Modaus Road to Danville Road, north on Danville Road (Memorial Drive) to Moulton Street, west on Moulton Street (Highway 24) to Woodall Road and Highway 24.
E-10 – Morgan County	Beginning at intersection of State Highway 20 and Lawrence County line, go south along county line to State Highway 24, then northeast on Highway 24 to Whitlow Road. Follow Whitlow Road to Hudson Road, go east along Hudson Road to Old Moulton Road, then go northeast on Old Moulton Road to Woodall Road, north on Woodall Road to State Highway 20, west on Highway 20 to Lawrence County line.
F-10 – Lawrence County	Beginning on State Highway 20 at the Lawrence- Morgan County line, go west on State Highway 20 to County Road 432, then south on 432 to the intersection of County Road 433, then west and north on County Road 433 until it intersects again with State Highway 20. Go west on State Highway 20 to the intersection of County Road 217, then south on County Road 217 to the intersection of County Road 301 at Sulphur Spring. Follow County Road 301 until the road runs into County Road 299, then follow County Road 299 until road runs into County Road 214; remain on County Road 214 east to Lawrence- Morgan County line, then north along the Lawrence-Morgan County line to the point of beginning on State Highway 20.
G-10 – Lawrence County	Beginning at the intersection of State Highway 20 and County Road 383, go north on County Road 383 to intersection of County Road 384, then north and east along County Road 384 back to County Road 383. Go north on County Road 383 to the intersection of County Road 387, then west on Brides Hill Road (County Road 387) to State Highway 20, then west on State Highway 20 to the intersection of State Highway 33. Proceed south on State Highway 33 to the intersection of County Road 222, then east on County Road 222 to the intersection of County Road 294, then follow a line southeast by Blowing Springs Branch to the intersection of County Road 217 at Sulphur Springs. Go north on County Road 217 to State Highway 20, then east on State 20 to point of beginning.
H-10 – Lawrence County	Beginning at the intersection of Brides Hill Road (County Road 387) in the vicinity of Terry Heights subdivision, go east along County Road 387 5.4 miles to County Road 423, then north to the end of County Road 423. Proceed due north to the Lawrence County line at the Tennessee River, then westerly along the county line to a point due north of the TVA Public Use Area, then south to the Spring Creek Road bridge. Follow Spring Creek Road (County Road 400) south to County Road 389, south on County Road 389 to Jefferson Street, then east on Jefferson Street to State Highway 33, to Terry Heights subdivision.
I-10 – Lauderdale County	Beginning at Elk River Bridge at U.S. Highway 72, go west to County Road 77, south on County Road 77 to Barnett Road, south on Barnett Road to curve in the road, then a southwest angle to the intersection of County Road 632 and County Road 91. Go north on County Road 91 to intersection of Longshore Drive, then south on Longshore Drive into Tennessee River to Lauderdale County line. Follow Lauderdale County line east, then north to beginning point at U.S. 72 at Elk River Bridge.
J-10 – Lauderdale County	Beginning at Elk River Bridge at U.S. Highway 72, go west on U.S. Highway 72 to County Road 70, north on County Road 70 to the intersection of County Road 70 and County Road 566, then east on County Road 566 to Richter Road at Lauderdale County line. Go south on Richter Road following Lauderdale County line into Elk River and then following Lauderdale County line to beginning point at Elk River Bridge at U.S. Highway 72.
K-10 – Limestone County	From a point on the Tennessee River and TVA Public Use Area to Elk River State Park go north along the Lauderdale County line to the 10-mile EPZ and Lauderdale County line intersection, along 10-mile EPZ line to the Elk River Mills Dock, south on Elk River Mills Road to Baker Hill Road. Proceed southwest on New Cut Road, south on Gordon

Sector/ERPA	Geographical Boundaries
	Road to Snake Road to Friend Road, south on Friend Road to Friend Branch and the Tennessee River.



## Appendix B

Transient and Special Facility  
Population Data

Table B-1. Major Employers in Browns Ferry EPZ

Facility	ERPA zone	Population						Vehicles					
		Summer			Winter			Summer			Winter		
		Weekday	Weeknight	Weekend	Weekday	Weeknight	Weekend	Weekday	Weeknight	Weekend	Weekday	Weeknight	Weekend
BROWNS FERRY TVA	A-2	978	231	63	978	231	63	978	231	63	978	231	63
3M CO	C-10	775	0	0	775	0	0	775	0	0	775	0	0
ASCEND PERFORMANCE MATERIALS	C-10	300	30	30	300	30	30	300	30	30	300	30	30
BMSI	E-10	50	0	0	50	0	0	50	0	0	50	0	0
BP CHEMICAL CO	C-10	500	0	0	500	0	0	500	0	0	500	0	0
CELL PAK INC	C-10	50	0	0	50	0	0	50	0	0	50	0	0
CHIPTEC INC	C-10	85	15	0	85	15	0	85	15	0	85	15	0
GOBBLE-FITE LUMBER CO	C-10	50	15	10	50	15	10	50	15	10	50	15	10
HEXCEL CORP	E-5	70	0	0	70	0	0	70	0	0	70	0	0
INTERNATIONAL PAPER CO	C-10	78	15	15	78	15	15	78	15	15	78	15	15
LIMESTONE COUNTY HEALTH DEPT	B-10	50	0	0	50	0	0	50	0	0	50	0	0
LIMESTONE COUNTY WATER AUTH	A-10	35	10	5	35	10	5	35	10	5	35	10	5
MDA MANUFACTURING INC	C-10	300	75	75	300	75	75	300	75	75	300	75	75
MONARCH STEEL CO INC	C-10	55	15	0	55	15	0	55	15	0	55	15	0
NICHOLS ALUMINUM INC	C-10	43	27	27	43	27	27	43	27	27	43	27	27
NORTH AMERICAN FIRE EQUIP CO	D-10	65	15	0	65	15	0	65	15	0	65	15	0
NUCOR STEEL	C-10	500	100	50	500	100	50	500	100	50	500	100	50
PEPSI BOTTLING GROUP	C-10	78	5	5	78	5	5	78	5	5	78	5	5
SIEMENS INDUSTRY INC	C-10	60	0	0	60	0	0	60	0	0	60	0	0
STEELCASE INC	B-10	350	350	100	350	350	100	350	350	100	350	350	100
TORAY CARBON FIBERS AMERICA	D-10	151	30	30	151	30	30	151	30	30	151	30	30
TURNER INDUSTRIES GROUP	C-10	125	0	0	125	0	0	125	0	0	125	0	0
TURNER MEDICAL	B-10	80	40	0	80	40	0	80	40	0	80	40	0
UNITED LAUNCH ALLIANCE	E-5	1000	100	100	1000	100	100	1000	100	100	1000	100	100
VULCAN PLASTICS CORP	B-10	25	25	0	25	25	0	25	25	0	25	25	0
WAYNE FARMS LLC	D-10	835	25	25	835	25	25	835	25	25	835	25	25
WAYNE FARMS FRESH	C-10	300	50	25	300	50	25	300	50	25	300	50	25
WESTWOOD MANUFACTURING	B-10	55	0	0	55	0	0	55	0	0	55	0	0
WORTHINGTON STEEL CO	C-10	56	15	15	56	15	15	56	15	15	56	15	15
BASF CORP	C-10	65	0	0	65	0	0	65	0	0	65	0	0
GAVILON	C-10	15	0	0	15	0	0	15	0	0	15	0	0
CALPINE-DECATUR ENERGY	C-10	17	3	3	17	3	3	17	3	3	17	3	3
LINEAGE RCS DECATUR	C-10	45	35	35	45	35	35	45	35	35	45	35	35
DECATUR TRANSIT, INC	C-10	34	8	8	34	8	8	34	8	8	34	8	8
COILPLUS ALABAMA	B-10	52	3	18	52	3	18	52	3	18	52	3	18
TRIAD PACKAGING	B-10	33	2	0	33	2	0	33	2	0	33	2	0

Table B-2. Recreation Areas and Facilities in Browns Ferry EPZ

Facility	ERPA	Population						Vehicles					
		Summer			Winter			Summer			Winter		
		week-day	week-night	week-end	week-day	week-night	week-end	week-day	week-night	week-end	week-day	week-night	week-end
ELK RIVER STATE PARK LODGE	K-10	30	30	30	30	30	30	15	15	15	15	15	15
ELK RIVER BOAT RAMPS	J-10	130	0	130	130	0	130	65	0	65	65	0	65
ELK RIVER BOAT RAMPS	I-10	80	0	80	80	0	80	40	0	40	40	0	40
ELK RIVER BOAT RAMPS	K-10	30	0	30	30	0	30	15	0	15	15	0	15
BAY HILL MARINA	K-10	240	156	240	240	156	240	120	72	120	120	72	120
COW FORD RV PARK	B-5	144	144	144	144	144	144	72	72	72	72	72	72
SPORTSMANS PARK BOAT RAMP	A-10	40	0	40	40	0	40	20	0	20	20	0	20
SWAN CREEK WMA	B-10												
INGALLS HARBOR MARINA	C-10	500	0	500	500	0	500	250	0	250	250	0	250
PIRATES CHEST MARINA	C-10	155	30	155	155	30	155	60	10	60	60	10	60
MALLARD-FOX CREEK WMA	E-5												
MALLARD-FOX CREEK WMA	F-2												
MALLARD-FOX CREEK WMA	F-5												
MALLARD-FOX CREEK WMA	G-2												
MALLARD CREEK REC AREA	G-2	441	200	441	220	100	220	176	80	176	88	40	88
MALLARD CREEK REC AREA	G-5												
DECATUR MALL	D-10	2100	2800	2800	2100	2800	2800	1125	1500	1500	1125	1500	1500

Table B-3. Hotels and Motels in Browns Ferry EPZ

Facility	ERPA	Population						Vehicles					
		Summer			Winter			Summer			Winter		
		week-day	week-night	week-end	week-day	week-night	week-end	week-day	week-night	week-end	week-day	week-night	week-end
HAMPTON INN	D-10	182	182	182	182	182	182	91	91	91	91	91	91
MICROTEL INN & SUITES	D-10	154	154	154	154	154	154	77	77	77	77	77	77
COURTYARD BY MARRIOTT	D-10	218	218	218	218	218	218	109	109	109	109	109	109
HOME-TOWNE SUITES	D-10	136	136	136	136	136	136	68	68	68	68	68	68
COMFORT INN & SUITES	out	202	202	202	202	202	202	101	101	101	101	101	101
BW RIVER CITY	D-10	118	118	118	118	118	118	59	59	59	59	59	59
JAMESON INN	D-10	116	116	116	116	116	116	58	58	58	58	58	58

**Table B-4. School Facilities in Browns Ferry EPZ**

School	ERPA	Students	Staff	Students+ Staff (combined)	Bus	Auto
ATHENS INTERMEDIATE	A-10			300	0	40
AUSTIN HIGH	D-10			1543	0	700
BENJAMIN DAVIS ELEMENTARY	C-10			303	6	20
BIRDIE THORNTON CENTER	B-10			74	10	13
BROOKHILL ELEMENTARY	B-10			270	5	25
CLEMENTS HIGH	K-10			620	14	225
EAST LAWRENCE ELEMENTARY	F-10	454	76	530	8	52
EAST LAWRENCE MIDDLE	F-10					
EAST LAWRENCE HIGH	F-10	1063	150	1213	21	87
JAMES L. COWART ELEMENTARY	A-10			270	3	25
JULIAN HARRIS ELEMENTARY	D-10			488	12	25
LEON SHEFFIELD ELEMENTARY	C-10			382	8	20
LIMESTONE COUNTY CAREER/TECH CENTER	B-10			350	8	40
TANNER HIGH	B-10			1010	16	170
WEST MORGAN ELEMENTARY	E-10					
WEST MORGAN MIDDLE/HIGH	E-10			1476	11	285
WETLANDS ENVIRONMENTAL LEARNING CENTER	E-5					
WOODMEADE ELEMENTARY	D-10			303	7	20
BLUE SPRINGS ELEMENTARY	K-10	575		575	14	50
WEST DECATUR ELEMENTARY	D-10			292	7	18

**Table B-5. Large Daycare Facilities in Browns Ferry EPZ**

Facility	ERPA	Children + Staff (combined)	Bus	Van	Auto	Vehicles
BOYS AND GIRLS CLUB OF ATHENS	A-10	128		2	8	10
TANNER HEAD START	B-10	67		0	6	6
CENTRAL PARK BAPTIST CHILD CARE	D-10	118		1	23	24
DECATUR BAPTIST CHILD CARE	D-10	180		3	24	27
FRIENDSHIP LEARNING CENTER	A-10	137		1	25	26
KIDS R US	D-10	60		1	5	6
LA PETITE ACADEMY	D-10	125	2		20	22
LIL' PEOPLE DAY SCHOOL	E-10	90		1	6	7
NOAH'S ARK CHILD CARE	D-10	95		1	15	16
WESLEY STAY AND PLAY	D-10	80		1	12	13
BOYS AND GIRLS CLUB OF TANNER	B-10	82		1	4	5
STERRS DAYCARE CENTER	C-10	36			6	6

**Table B-6. Hospitals, Nursing Homes, and Other Special Facilities in Browns Ferry EPZ**

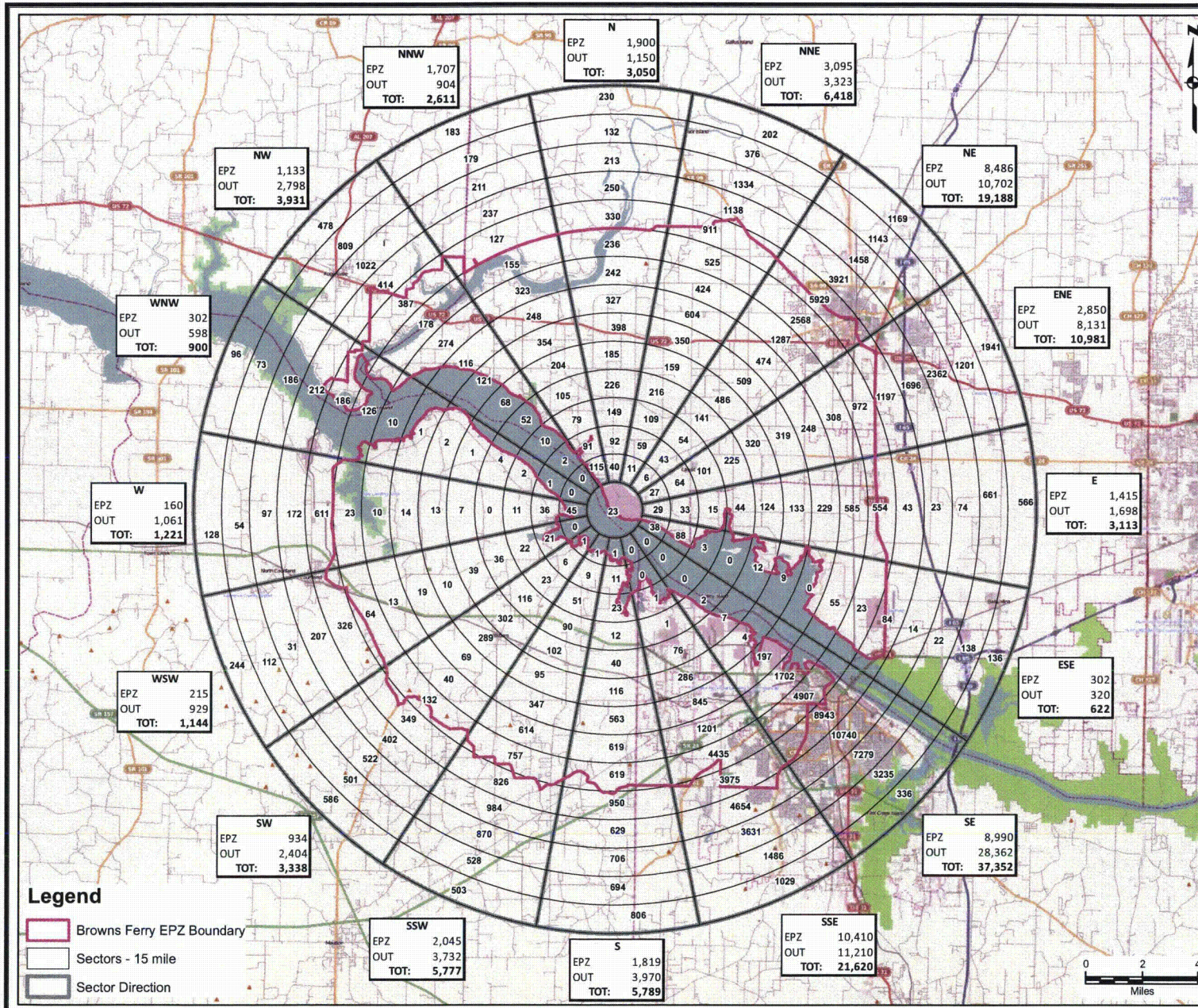
Facility	ERPA	Residents	Bus	Van	Ambulance	Auto
COUNTRY COTTAGE	D-10	85		1		15
PRESBYTERIAN TOWERS	D-10	150				50
DECATUR WORK RELEASE CENTER	C-10	150	3	3		20
MORGAN COUNTY SYSTEM OF SERVICES	C-10	35				15
PARKWAY MEDICAL CENTER	D-10	200				100
LIMESTONE HEALTH FACILITY	A-10	260		12		90
DECATUR GEN WEST BEHAVIORAL	D-10	139		6		63





## Appendix C

### Population Data Maps

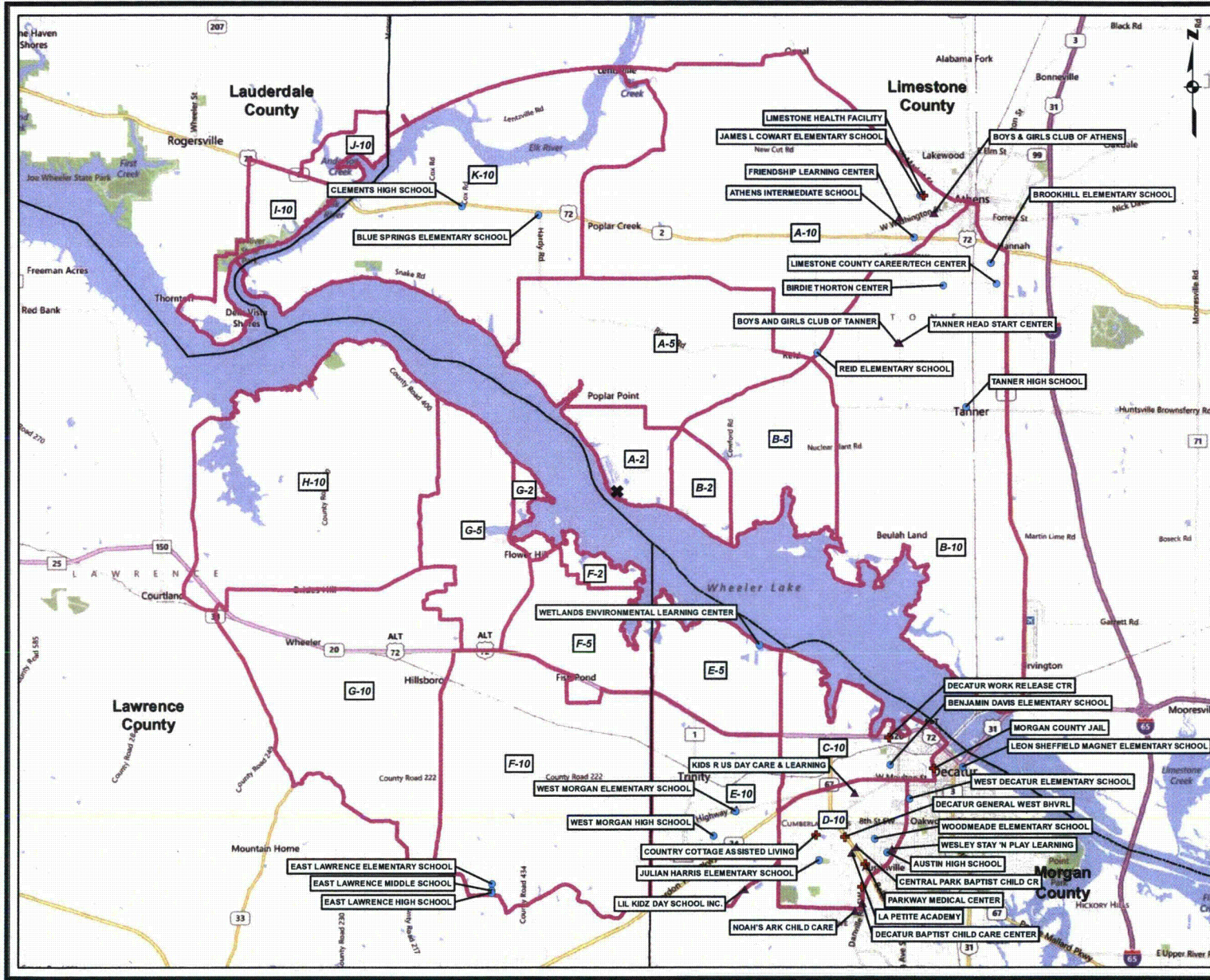


DISTANCE	POPULATION	DISTANCE	POPULATION
EPZ 1	23	OUT 1	0
EPZ 2	314	OUT 2	0
EPZ 3	556	OUT 3	0
EPZ 4	653	OUT 4	0
EPZ 5	1,270	OUT 5	0
EPZ 6	2,132	OUT 6	0
EPZ 7	3,008	OUT 7	0
EPZ 8	4,301	OUT 8	0
EPZ 9	7,697	OUT 9	10
EPZ 10	14,907	OUT 10	1,367
EPZ 11	10,563	OUT 11	14,611
EPZ 12	352	OUT 12	25,341
		OUT 13	20,018
		OUT 14	11,322
		OUT 15	8,633
<b>EPZ TOTAL:</b>	<b>45,776</b>	<b>EPZ-15 TOTAL:</b>	<b>81,302</b>
<b>TOTAL POPULATION: 127,078</b>			

NOTE:  
• Plant to 1 mile population not summarized in any sector direction.

Open Street Map Base Image Source: ArcGIS Online Services, Access date: 09/19/2012, via ArcGIS v10. This image is not for re-sale or distribution outside of the use of this PDF.

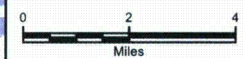
**ARCADIS**  
TVA  
**PERMANENT RESIDENT POPULATION DISTRIBUTION EPZ & SECTORS 15-MILE**  
BROWNS FERRY NUCLEAR POWER PLANT



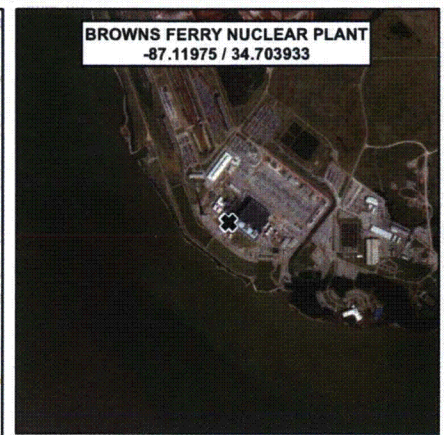
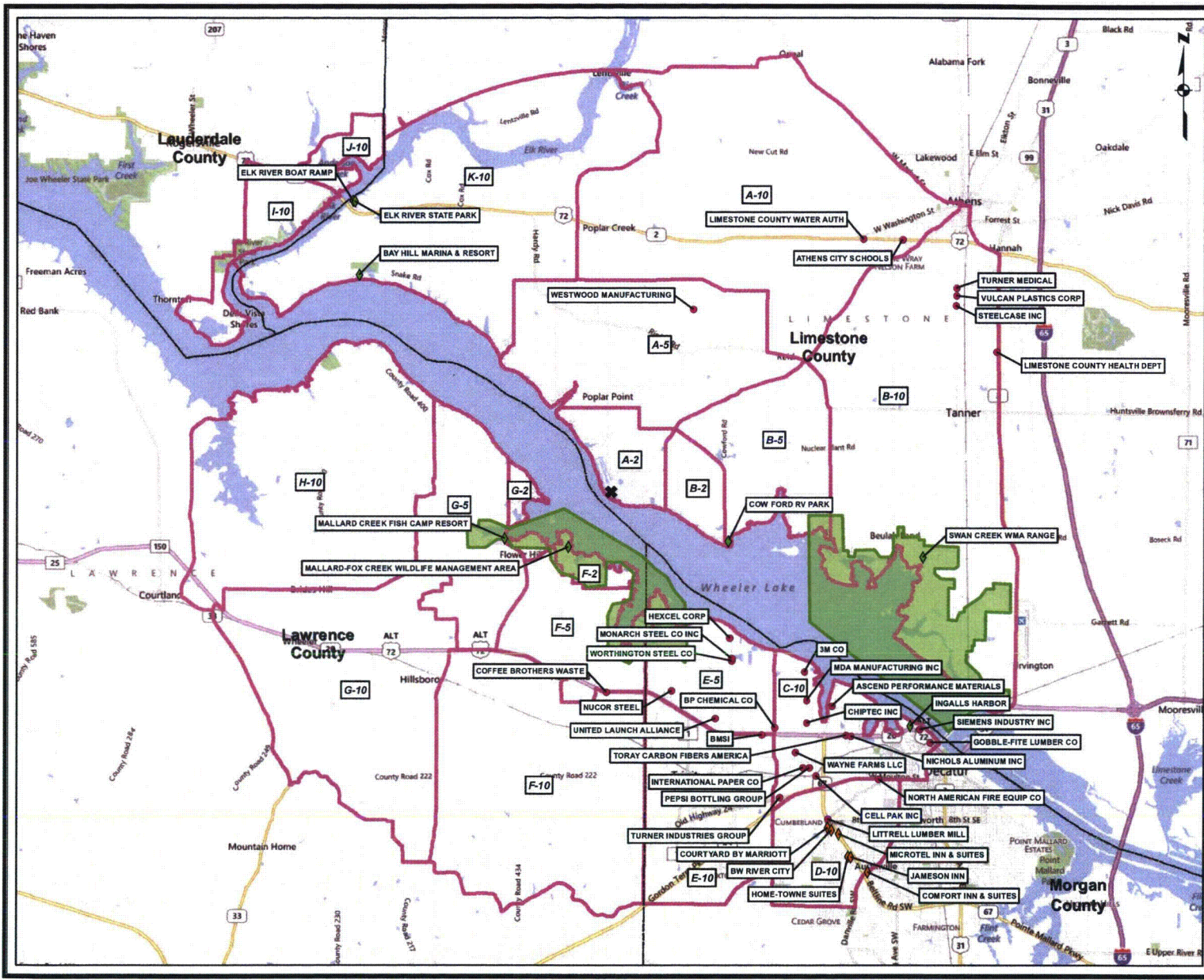
**BROWNS FERRY NUCLEAR PLANT**  
-87.11975 / 34.703933

**Legend**

- ✱ Browns Ferry
- ▭ EPZ Sector
- ▭ County Boundary
- Facility Type**
- SCHOOL
- ✱ SPECIAL
- ▲ DAYCARE



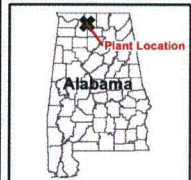
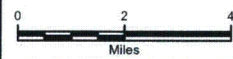
**ARCADIS**  
TVA  
SCHOOLS AND INSTITUTIONS BY EPZ SECTOR  
BROWNS FERRY NUCLEAR POWER PLANT



**BROWNS FERRY NUCLEAR PLANT**  
-87.11975 / 34.703933

**Legend**

- ✱ Browns Ferry
- EPZ Sector
- County Boundary
- Facility Type**
- EMPLOY
- ◆ MOTEL
- ◆ RECREATION
- RECREATION AREA FOOTPRINT

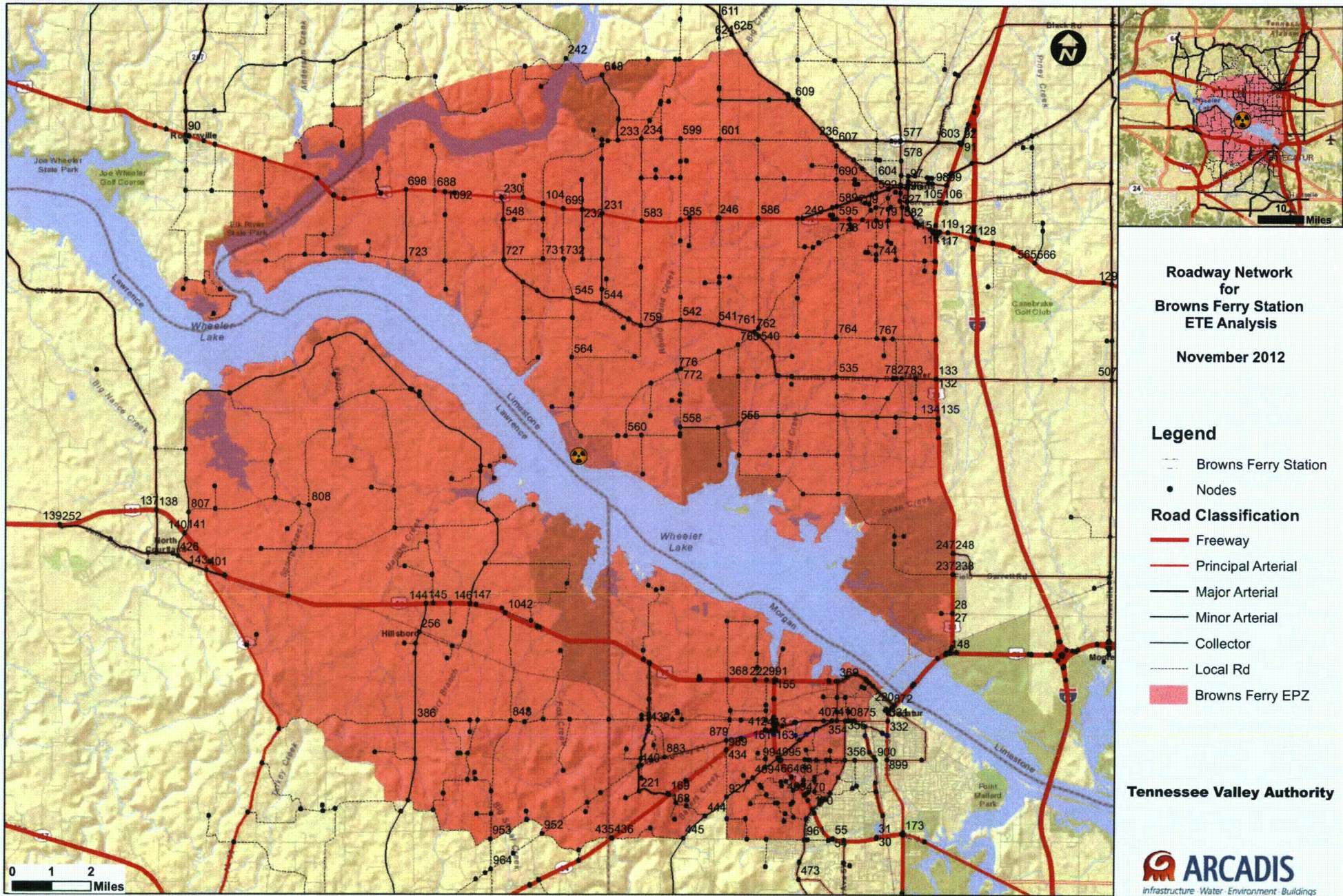


**ARCADIS**  
TVA  
MAJOR EMPLOYERS, MOTELS,  
AND RECREATION LOCATIONS  
BY EPZ SECTOR  
BROWNS FERRY NUCLEAR POWER PLANT



## Appendix D

Roadway Network Map and Data  
Table



**Roadway Network  
for  
Browns Ferry Station  
ETE Analysis**

**November 2012**

**Legend**

- Browns Ferry Station
- Nodes
- Road Classification**
- Freeway
- Principal Arterial
- Major Arterial
- Minor Arterial
- Collector
- Local Rd
- Browns Ferry EPZ

**Tennessee Valley Authority**



Link #	U-Node	D-Node	Length (mi)	Lane Width (ft)	Number of Lanes	Roadway Type	Saturation Flow Rate (veh/hr)	FFS (mph)
1	15	16	0.011	11	2	Minor Arterial	2800	35
2	17	18	0.011	11	2	Minor Arterial	2800	35
3	16	18	0.069	12	2	Principal Arterial	3600	65
4	19	20	0.012	11	1	Minor Arterial	1300	35
5	23	24	0.011	10	2	Collector / Local Road	2600	25
6	25	26	0.012	11	2	Minor Arterial	2800	35
7	27	28	0.008	10	1	Collector / Local Road	1300	25
8	30	31	0.016	10	1	Collector / Local Road	1300	25
9	51	52	0.011	10	1	Collector / Local Road	1300	25
10	53	170	0.824	12	2	Principal Arterial	3400	45
11	54	55	0.052	10	1	Collector / Local Road	1300	25
12	57	58	0.021	12	1	Major Arterial	1400	45
13	46	59	0.362	12	1	Ramp	1800	35
14	61	62	0.112	12	1	Major Arterial	1400	45
15	63	64	0.007	12	1	Minor Arterial	1400	40
16	43	65	0.456	12	2	Freeway	4000	70
17	66	67	0.14	12	1	Minor Arterial	1400	40
18	64	65	0.214	12	1	Ramp	1800	35
19	44	66	0.277	12	1	Ramp	1800	35
20	69	70	0.071	10	1	Collector / Local Road	1300	25
21	72	73	0.148	12	1	Major Arterial	1400	55
22	72	74	1.104	12	1	Major Arterial	1400	45
23	60	75	0.012	11	1	Minor Arterial	1300	35
24	76	77	0.028	12	1	Collector / Local Road	1300	40
25	76	78	0.022	12	1	Major Arterial	1400	45
26	78	80	0.017	12	1	Principal Arterial	1700	45
27	80	82	0.03	12	2	Principal Arterial	3400	55
28	80	83	0.034	12	1	Principal Arterial	1700	45
29	81	83	0.052	12	1	Collector / Local Road	1300	45
30	84	85	0.117	12	1	Major Arterial	1400	55
31	29	86	0.015	11	1	Minor Arterial	1300	35
32	71	89	0.483	12	1	Ramp	1800	35
33	91	92	0.01	12	1	Major Arterial	1400	45
34	94	95	0.011	12	1	Major Arterial	1400	50
35	96	97	0.082	11	1	Minor Arterial	1400	30
36	98	99	0.011	12	1	Minor Arterial	1400	40
37	100	101	0.063	11	2	Minor Arterial	2800	30
38	96	102	0.065	11	1	Minor Arterial	1400	30
39	103	105	0.032	12	2	Minor Arterial	2800	40
40	105	106	0.011	12	2	Minor Arterial	2800	40
41	108	109	0.042	11	1	Major Arterial	1400	30
42	109	110	0.037	12	1	Collector / Local Road	1300	40
43	108	111	0.045	12	1	Major Arterial	1400	45
44	110	111	0.075	12	2	Principal Arterial	3400	45
45	111	112	0.05	12	2	Principal Arterial	3400	45
46	113	114	0.092	12	2	Principal Arterial	3400	45
47	114	115	0.133	12	2	Principal Arterial	3400	45
48	115	116	0.057	12	2	Principal Arterial	3400	45
49	116	117	0.108	12	2	Principal Arterial	3400	45
50	117	119	0.043	12	2	Principal Arterial	3400	45
51	114	120	0.048	12	1	Ramp	1900	35
52	113	120	0.112	12	1	Ramp	1900	35
53	117	121	0.073	12	1	Ramp	1800	35
54	116	121	0.036	12	1	Ramp	1800	35
55	121	124	0.089	12	1	Ramp	1800	35
56	122	126	0.115	12	2	Major Arterial	2800	50

Link #	U-Node	D-Node	Length (mi)	Lane Width (ft)	Number of Lanes	Roadway Type	Saturation Flow Rate (veh/hr)	FFS (mph)
57	120	126	0.129	12	1	Ramp	1900	35
58	87	127	0.252	12	1	Ramp	1900	35
59	127	128	0.129	12	2	Freeway	3800	50
60	40	128	0.833	12	1	Ramp	1900	35
61	132	133	0.01	11	1	Minor Arterial	1400	35
62	134	135	0.01	11	1	Minor Arterial	1300	35
63	137	138	0.017	12	1	Major Arterial	1400	45
64	140	141	0.015	12	1	Minor Arterial	1300	45
65	142	143	0.016	12	1	Principal Arterial	1700	55
66	144	145	0.012	11	1	Minor Arterial	1300	35
67	146	147	0.011	11	1	Minor Arterial	1300	35
68	148	149	0.157	12	1	Principal Arterial	1700	55
69	50	148	0.196	12	1	Collector / Local Road	1300	45
70	148	151	0.036	12	1	Collector / Local Road	1300	45
71	153	154	0.012	12	1	Major Arterial	1400	45
72	155	1053	0.165	12	2	Major Arterial	3200	45
73	156	157	0.068	12	3	Principal Arterial	5100	45
74	160	161	0.095	12	3	Principal Arterial	5100	45
75	160	164	0.122	12	1	Ramp	1800	35
76	166	167	0.014	12	1	Major Arterial	1400	40
77	168	169	0.016	11	1	Major Arterial	1400	35
78	171	173	0.104	12	2	Principal Arterial	3400	45
79	173	174	0.104	12	2	Principal Arterial	3400	40
80	33	175	0.171	12	1	Ramp	1900	35
81	175	176	0.057	12	1	Ramp	1900	35
82	175	177	0.047	12	1	Ramp	1900	35
83	177	178	0.017	12	1	Collector / Local Road	1300	45
84	178	180	0.022	12	1	Ramp	1900	35
85	179	180	0.089	12	1	Ramp	1900	35
86	181	182	0.039	12	1	Ramp	1900	35
87	183	185	0.047	12	2	Principal Arterial	3400	50
88	21	22	0.049	12	1	Minor Arterial	1300	45
89	188	189	0.012	12	1	Principal Arterial	1700	55
90	190	191	0.076	12	1	Collector / Local Road	1300	45
91	194	195	0.04	12	2	Principal Arterial	3400	45
92	191	192	0.055	12	1	Collector / Local Road	1300	45
93	194	196	0.046	12	1	Collector / Local Road	1300	45
94	198	199	0.06	12	1	Collector / Local Road	1300	45
95	198	200	0.16	12	2	Principal Arterial	3400	55
96	199	200	0.093	12	1	Principal Arterial	1700	55
97	200	201	0.094	12	2	Principal Arterial	3400	55
98	199	201	0.045	12	1	Collector / Local Road	1300	45
99	202	203	0.021	12	2	Principal Arterial	3400	55
100	200	202	0.052	12	1	Principal Arterial	1700	55
101	201	205	0.046	12	2	Principal Arterial	3400	55
102	202	206	0.109	12	1	Principal Arterial	1700	55
103	204	206	0.175	12	1	Collector / Local Road	1300	45
104	208	209	0.196	12	1	Ramp	1800	35
105	37	208	0.225	12	1	Ramp	1800	35
106	212	213	0.013	11	1	Major Arterial	1400	25
107	218	219	0.009	11	1	Minor Arterial	1300	35
108	224	225	0.076	12	2	Principal Arterial	3400	40
109	226	227	0.011	12	1	Minor Arterial	1400	40
110	231	232	0.52	12	2	Principal Arterial	3400	60
111	233	234	0.589	12	1	Collector / Local Road	1300	50
112	23	25	0.064	12	2	Principal Arterial	3600	60
113	237	238	0.007	10	1	Collector / Local Road	1300	25



Link #	U-Node	D-Node	Length (mi)	Lane Width (ft)	Number of Lanes	Roadway Type	Saturation Flow Rate (veh/hr)	FFS (mph)
114	240	241	0.068	12	1	Collector / Local Road	1300	45
115	245	246	0.045	12	2	Principal Arterial	3400	60
116	247	248	0.01	12	1	Minor Arterial	1400	40
117	250	251	0.02	12	1	Minor Arterial	1400	55
118	191	193	0.046	12	2	Principal Arterial	3400	45
119	190	193	0.041	12	2	Principal Arterial	3400	55
120	193	195	0.016	12	2	Principal Arterial	3400	45
121	195	196	0.032	12	2	Principal Arterial	3400	55
122	139	252	0.016	12	1	Minor Arterial	1400	40
123	254	255	0.011	12	1	Collector / Local Road	1300	45
124	260	261	0.016	10	1	Collector / Local Road	1300	35
125	262	263	0.016	10	2	Collector / Local Road	2600	25
126	268	269	0.015	10	2	Collector / Local Road	2600	25
127	161	164	0.042	12	1	Ramp	1800	35
128	164	274	0.197	12	1	Ramp	1800	35
129	49	275	0.241	12	1	Ramp	1800	35
130	275	276	0.027	12	1	Ramp	1800	35
131	57	276	0.009	12	1	Minor Arterial	1400	40
132	64	67	0.022	12	1	Minor Arterial	1400	40
133	43	277	0.253	12	1	Ramp	1800	35
134	63	278	0.012	12	1	Minor Arterial	1400	40
135	158	280	0.141	12	1	Ramp	1800	35
136	280	281	0.094	12	1	Ramp	1800	35
137	281	282	0.016	12	1	Collector / Local Road	1300	40
138	157	281	0.007	12	3	Principal Arterial	5100	45
139	156	159	0.088	12	1	Ramp	1900	35
140	157	159	0.043	12	1	Ramp	1900	35
141	151	283	0.168	12	2	Major Arterial	3400	60
142	270	285	0.016	11	2	Minor Arterial	2800	35
143	267	286	0.011	11	2	Minor Arterial	2800	35
144	289	290	0.016	11	2	Minor Arterial	2800	35
145	291	292	0.016	11	2	Minor Arterial	2800	35
146	293	294	0.015	10	2	Collector / Local Road	2600	25
147	292	294	0.265	12	2	Principal Arterial	3400	65
148	1	2	0.143	12	1	Ramp	1900	35
149	1	3	0.15	12	2	Freeway	4000	65
150	2	4	0.071	12	1	Principal Arterial	1700	45
151	4	5	0.017	12	1	Principal Arterial	1700	45
152	5	6	0.198	12	1	Principal Arterial	1700	45
153	7	8	0.197	12	2	Freeway	4000	65
154	6	8	0.19	12	1	Ramp	1900	35
155	6	9	0.05	12	1	Principal Arterial	1700	45
156	6	7	0.14	12	1	Ramp	1900	35
157	5	10	0.231	12	1	Ramp	1900	35
158	302	303	0.344	12	2	Ramp	3800	70
159	304	305	0.278	12	1	Ramp	1900	55
160	303	309	0.521	12	1	Ramp	1900	55
161	303	310	0.265	12	2	Ramp	3800	70
162	310	312	0.062	12	2	Ramp	3800	70
163	298	313	0.383	12	2	Ramp	3800	70
164	299	301	0.231	12	1	Ramp	1900	55
165	319	320	0.042	12	1	Major Arterial	1400	45
166	320	321	0.045	12	1	Ramp	1800	35
167	319	321	0.028	12	1	Ramp	1800	35
168	297	324	0.023	11	1	Minor Arterial	1300	35
169	324	325	0.039	11	1	Minor Arterial	1300	35
170	323	324	0.031	12	1	Ramp	1800	25

Link #	U-Node	D-Node	Length (mi)	Lane Width (ft)	Number of Lanes	Roadway Type	Saturation Flow Rate (veh/hr)	FFS (mph)
171	325	326	0.07	12	1	Ramp	1800	25
172	297	326	0.033	12	1	Ramp	1800	35
173	315	327	0.303	12	1	Ramp	1800	35
174	326	328	0.235	12	1	Ramp	1800	35
175	322	328	0.559	12	2	Freeway	3800	60
176	260	290	0.487	12	2	Principal Arterial	3400	65
177	438	439	0.127	11	1	Major Arterial	1400	25
178	465	466	0.272	12	2	Principal Arterial	3400	45
179	53	469	0.153	12	2	Principal Arterial	3400	45
180	336	337	0.153	12	2	Principal Arterial	3400	50
181	353	354	0.078	12	2	Minor Arterial	2800	40
182	354	355	0.073	12	2	Minor Arterial	2800	40
183	170	360	0.758	12	2	Minor Arterial	2800	40
184	170	361	0.401	12	2	Principal Arterial	3400	45
185	364	365	0.066	12	1	Principal Arterial	1700	45
186	369	370	0.032	12	2	Major Arterial	3400	55
187	372	373	0.067	12	2	Major Arterial	3200	45
188	373	374	0.065	12	2	Major Arterial	3200	45
189	222	375	0.318	10	1	Collector / Local Road	1300	25
190	21	381	0.917	12	2	Principal Arterial	3400	65
191	395	396	0.354	12	1	Minor Arterial	1300	45
192	394	397	0.127	12	1	Minor Arterial	1300	45
193	398	399	0.031	12	1	Minor Arterial	1300	45
194	413	414	0.025	12	2	Principal Arterial	3400	55
195	446	447	0.035	12	1	Minor Arterial	1300	40
196	459	460	0.179	12	1	Major Arterial	1400	45
197	507	509	1.011	12	1	Major Arterial	1400	45
198	90	488	0.081	12	2	Principal Arterial	3400	45
199	229	598	0.193	12	1	Collector / Local Road	1300	50
200	599	600	0.496	12	1	Collector / Local Road	1300	50
201	599	601	1	12	1	Collector / Local Road	1300	50
202	496	497	0.657	10	1	Collector / Local Road	1300	25
203	501	502	0.409	10	1	Collector / Local Road	1300	30
204	503	504	0.5	12	1	Minor Arterial	1400	40
205	571	572	0.096	12	1	Minor Arterial	1400	40
206	512	513	0.05	12	1	Major Arterial	1400	45
207	522	523	0.066	12	1	Minor Arterial	1400	40
208	62	528	0.663	12	1	Minor Arterial	1400	40
209	51	531	0.273	12	2	Principal Arterial	3400	50
210	124	533	0.191	12	2	Major Arterial	2800	50
211	537	538	0.046	12	1	Minor Arterial	1400	45
212	539	540	0.661	12	1	Minor Arterial	1400	45
213	541	542	0.999	12	1	Minor Arterial	1400	55
214	543	544	0.8	12	1	Minor Arterial	1400	55
215	550	551	0.482	11	1	Minor Arterial	1300	35
216	552	553	0.004	11	1	Minor Arterial	1300	35
217	555	556	0.542	12	1	Minor Arterial	1300	45
218	557	558	0.981	12	1	Minor Arterial	1300	45
219	556	557	0.004	11	1	Minor Arterial	1300	35
220	560	561	0.196	12	1	Collector / Local Road	1300	55
221	561	562	0.007	10	1	Collector / Local Road	1300	25
222	128	569	0.072	12	2	Freeway	3800	50
223	527	581	0.164	11	2	Minor Arterial	2800	30
224	246	584	0.725	12	2	Principal Arterial	3400	60
225	584	585	0.243	12	2	Principal Arterial	3400	60
226	249	587	0.129	12	2	Principal Arterial	3400	55
227	588	589	0.113	12	1	Major Arterial	1400	40

Link #	U-Node	D-Node	Length (mi)	Lane Width (ft)	Number of Lanes	Roadway Type	Saturation Flow Rate (veh/hr)	FFS (mph)
228	590	591	0.069	12	1	Major Arterial	1400	40
229	594	595	0.093	12	2	Principal Arterial	3400	55
230	608	609	0.175	12	1	Major Arterial	1400	55
231	609	610	0.186	12	1	Major Arterial	1400	55
232	239	616	0.433	10	1	Collector / Local Road	1300	25
233	618	620	0.375	12	1	Collector / Local Road	1300	40
234	621	622	0.696	12	1	Collector / Local Road	1300	50
235	621	623	0.117	12	1	Collector / Local Road	1300	50
236	515	628	0.059	10	1	Collector / Local Road	1300	25
237	523	629	0.122	12	1	Collector / Local Road	1300	40
238	630	631	0.126	10	1	Collector / Local Road	1300	25
239	634	635	0.521	10	1	Collector / Local Road	1300	25
240	504	642	0.558	10	1	Collector / Local Road	1300	25
241	611	637	0.414	11	1	Minor Arterial	1300	35
242	611	624	0.57	12	1	Minor Arterial	1300	50
243	640	641	1.388	10	1	Collector / Local Road	1300	25
244	519	649	0.08	10	1	Collector / Local Road	1300	25
245	229	666	0.135	10	1	Collector / Local Road	1300	25
246	614	643	0.953	10	1	Collector / Local Road	1300	25
247	647	648	0.027	10	1	Collector / Local Road	1300	25
248	645	651	0.487	10	1	Collector / Local Road	1300	25
249	648	653	0.28	12	1	Collector / Local Road	1300	50
250	90	654	0.157	10	1	Collector / Local Road	1300	25
251	610	656	0.129	11	1	Minor Arterial	1300	35
252	609	656	0.132	11	1	Minor Arterial	1300	35
253	609	657	0.118	11	1	Minor Arterial	1300	35
254	661	662	0.063	10	1	Collector / Local Road	1300	25
255	598	666	0.155	10	1	Collector / Local Road	1300	25
256	234	660	0.533	10	1	Collector / Local Road	1300	25
257	669	670	0.514	10	1	Collector / Local Road	1300	25
258	571	695	0.137	10	1	Collector / Local Road	1300	25
259	229	668	0.361	10	1	Collector / Local Road	1300	25
260	599	672	0.571	12	1	Collector / Local Road	1300	45
261	672	673	0.15	10	1	Collector / Local Road	1300	25
262	679	680	0.103	10	1	Collector / Local Road	1300	25
263	694	695	0.077	10	1	Collector / Local Road	1300	30
264	691	696	0.114	10	1	Collector / Local Road	1300	25
265	589	595	0.334	12	1	Collector / Local Road	1300	40
266	682	683	0.21	10	1	Collector / Local Road	1300	25
267	607	684	0.523	12	1	Collector / Local Road	1300	40
268	672	686	0.418	12	1	Collector / Local Road	1300	45
269	684	690	0.349	12	1	Collector / Local Road	1300	40
270	604	692	0.014	10	1	Collector / Local Road	1300	25
271	693	694	0.043	10	1	Collector / Local Road	1300	30
272	696	697	0.086	10	1	Collector / Local Road	1300	25
273	232	700	0.754	11	1	Minor Arterial	1300	35
274	725	735	0.261	10	1	Collector / Local Road	1300	25
275	585	686	1.079	12	1	Collector / Local Road	1300	45
276	232	711	0.507	11	1	Minor Arterial	1300	35
277	588	714	0.192	10	1	Collector / Local Road	1300	25
278	703	715	0.413	12	1	Collector / Local Road	1300	45
279	714	716	0.063	10	1	Collector / Local Road	1300	25
280	704	718	0.495	10	1	Collector / Local Road	1300	25
281	717	718	0.47	10	1	Collector / Local Road	1300	25
282	594	714	0.104	10	1	Collector / Local Road	1300	25
283	585	722	0.533	12	1	Collector / Local Road	1300	45
284	715	731	0.594	12	1	Collector / Local Road	1300	45

Link #	U-Node	D-Node	Length (mi)	Lane Width (ft)	Number of Lanes	Roadway Type	Saturation Flow Rate (veh/hr)	FFS (mph)
285	744	746	0.507	10	1	Collector / Local Road	1300	25
286	749	750	0.257	10	1	Collector / Local Road	1300	25
287	740	741	0.01	10	1	Collector / Local Road	1300	25
288	743	744	0.122	10	1	Collector / Local Road	1300	30
289	845	846	0.192	12	1	Collector / Local Road	1300	45
290	771	777	0.631	10	1	Collector / Local Road	1300	25
291	765	778	0.802	12	1	Collector / Local Road	1300	45
292	777	778	0.503	10	1	Collector / Local Road	1300	25
293	542	754	0.582	12	1	Collector / Local Road	1300	45
294	761	762	0.14	12	1	Collector / Local Road	1300	45
295	766	767	0.19	12	1	Collector / Local Road	1300	40
296	769	771	0.006	10	1	Collector / Local Road	1300	25
297	771	772	1.063	12	1	Collector / Local Road	1300	45
298	766	773	0.432	10	1	Collector / Local Road	1300	25
299	423	774	0.966	10	1	Collector / Local Road	1300	25
300	509	775	0.123	10	1	Collector / Local Road	1300	25
301	399	423	0.282	12	1	Collector / Local Road	1300	45
302	779	790	0.839	10	1	Collector / Local Road	1300	25
303	791	792	0.505	10	1	Collector / Local Road	1300	25
304	553	794	0.01	10	1	Collector / Local Road	1300	25
305	538	780	0.509	10	1	Collector / Local Road	1300	25
306	536	781	0.204	10	1	Collector / Local Road	1300	25
307	776	784	0.628	12	1	Collector / Local Road	1300	45
308	786	787	0.667	10	1	Collector / Local Road	1300	25
309	795	796	0.161	10	1	Collector / Local Road	1300	35
310	783	789	0.621	12	1	Collector / Local Road	1300	45
311	798	810	0.534	10	1	Collector / Local Road	1300	25
312	842	843	0.08	10	1	Collector / Local Road	1300	25
313	798	799	0.224	10	1	Collector / Local Road	1300	25
314	394	797	0.24	10	1	Collector / Local Road	1300	25
315	794	800	1.033	12	1	Collector / Local Road	1300	45
316	800	801	0.009	10	1	Collector / Local Road	1300	25
317	803	804	0.585	10	1	Collector / Local Road	1300	25
318	806	807	0.72	12	1	Collector / Local Road	1300	45
319	811	812	0.902	12	1	Collector / Local Road	1300	45
320	814	819	0.398	10	1	Collector / Local Road	1300	25
321	819	822	0.865	10	1	Collector / Local Road	1300	25
322	822	823	0.014	10	1	Collector / Local Road	1300	25
323	826	827	0.183	10	1	Collector / Local Road	1300	25
324	827	828	0.237	10	1	Collector / Local Road	1300	25
325	400	832	0.531	10	1	Collector / Local Road	1300	25
326	498	833	0.419	10	1	Collector / Local Road	1300	25
327	146	834	0.748	10	1	Collector / Local Road	1300	35
328	837	838	0.766	10	1	Collector / Local Road	1300	25
329	368	858	2.615	10	1	Collector / Local Road	1300	35
330	848	852	0.367	12	1	Collector / Local Road	1300	45
331	853	856	0.053	10	1	Collector / Local Road	1300	25
332	433	857	0.177	10	1	Collector / Local Road	1300	25
333	857	860	0.109	10	1	Collector / Local Road	1300	25
334	860	862	0.18	10	1	Collector / Local Road	1300	25
335	856	864	0.23	10	1	Collector / Local Road	1300	25
336	892	893	0.098	12	1	Collector / Local Road	1300	40
337	896	908	0.311	10	1	Collector / Local Road	1300	25
338	933	948	0.554	10	1	Collector / Local Road	1300	25
339	927	950	0.552	12	1	Collector / Local Road	1300	40
340	868	871	0.057	10	1	Collector / Local Road	1300	25
341	870	873	0.641	10	1	Collector / Local Road	1300	25

Link #	U-Node	D-Node	Length (mi)	Lane Width (ft)	Number of Lanes	Roadway Type	Saturation Flow Rate (veh/hr)	FFS (mph)
342	224	871	0.096	10	1	Collector / Local Road	1300	25
343	876	877	0.077	10	1	Collector / Local Road	1300	25
344	405	880	0.268	10	1	Collector / Local Road	1300	25
345	854	888	1.464	10	1	Collector / Local Road	1300	25
346	440	889	0.074	12	1	Collector / Local Road	1300	45
347	890	891	0.704	10	1	Collector / Local Road	1300	25
348	408	898	0.208	10	1	Collector / Local Road	1300	25
349	889	901	0.34	10	1	Collector / Local Road	1300	25
350	909	914	0.076	10	1	Collector / Local Road	1300	25
351	913	914	0.29	10	1	Collector / Local Road	1300	25
352	913	916	0.09	10	1	Collector / Local Road	1300	25
353	911	917	0.111	10	1	Collector / Local Road	1300	25
354	221	920	0.373	10	1	Collector / Local Road	1300	25
355	465	916	0.157	10	1	Collector / Local Road	1300	25
356	359	945	0.103	10	1	Collector / Local Road	1300	25
357	925	926	0.36	10	1	Collector / Local Road	1300	25
358	923	928	0.106	10	1	Collector / Local Road	1300	25
359	916	931	0.253	10	1	Collector / Local Road	1300	25
360	931	932	0.07	10	1	Collector / Local Road	1300	25
361	469	932	0.057	10	1	Collector / Local Road	1300	25
362	921	934	0.26	10	1	Collector / Local Road	1300	25
363	937	938	0.152	10	1	Collector / Local Road	1300	25
364	939	940	0.219	10	1	Collector / Local Road	1300	25
365	949	954	0.229	10	1	Collector / Local Road	1300	25
366	950	951	0.483	10	1	Collector / Local Road	1300	25
367	961	962	0.08	12	2	Collector / Local Road	2600	40
368	951	959	0.536	10	1	Collector / Local Road	1300	25
369	959	960	0.495	12	1	Collector / Local Road	1300	40
370	54	963	0.102	12	1	Minor Arterial	1400	40
371	964	965	0.186	12	1	Collector / Local Road	1300	45
372	978	979	0.008	10	1	Collector / Local Road	1300	25
373	341	342	0.012	12	1	Collector / Local Road	1300	40
374	986	987	0.212	10	1	Collector / Local Road	1300	25
375	492	493	0.012	10	1	Collector / Local Road	1300	25
376	417	418	0.015	10	1	Collector / Local Road	1300	25
377	415	416	0.018	10	1	Collector / Local Road	1300	25
378	380	381	0.019	10	1	Collector / Local Road	1300	25
379	378	379	0.018	12	1	Collector / Local Road	1300	45
380	389	390	0.016	10	1	Collector / Local Road	1300	25
381	390	958	0.257	10	1	Collector / Local Road	1300	25
382	168	933	0.279	10	1	Collector / Local Road	1300	35
383	434	989	0.017	12	1	Collector / Local Road	1300	40
384	413	898	0.729	10	1	Collector / Local Road	1300	25
385	412	413	0.016	10	1	Collector / Local Road	1300	25
386	410	866	0.226	12	1	Collector / Local Road	1300	40
387	855	991	2.108	10	1	Collector / Local Road	1300	25
388	992	993	0.011	10	1	Collector / Local Road	1300	25
389	841	993	0.221	10	1	Collector / Local Road	1300	25
390	994	995	0.015	12	1	Collector / Local Road	1300	40
391	468	912	0.168	10	1	Collector / Local Road	1300	25
392	466	468	0.014	10	1	Collector / Local Road	1300	25
393	467	924	0.162	10	1	Collector / Local Road	1300	25
394	465	467	0.014	10	1	Collector / Local Road	1300	25
395	469	470	0.014	10	1	Collector / Local Road	1300	25
396	337	339	0.009	10	1	Collector / Local Road	1300	35
397	284	996	0.017	12	1	Collector / Local Road	1300	40
398	997	998	0.011	10	1	Collector / Local Road	1300	25

Link #	U-Node	D-Node	Length (mi)	Lane Width (ft)	Number of Lanes	Roadway Type	Saturation Flow Rate (veh/hr)	FFS (mph)
399	530	999	0.01	10	1	Collector / Local Road	1300	25
400	1001	1002	0.012	10	1	Collector / Local Road	1300	25
401	565	566	0.011	11	1	Minor Arterial	1300	35
402	505	506	0.011	11	1	Minor Arterial	1300	35
403	399	1003	0.226	11	1	Minor Arterial	1300	35
404	423	1003	0.055	11	1	Minor Arterial	1300	35
405	785	1004	0.193	10	1	Collector / Local Road	1300	25
406	435	436	0.02	12	1	Collector / Local Road	1300	45
407	37	1008	0.221	12	2	Freeway	4000	65
408	540	763	0.978	12	1	Collector / Local Road	1300	45
409	189	1045	0.487	12	2	Principal Arterial	3400	55
410	877	891	0.184	10	1	Collector / Local Road	1300	25
411	893	903	0.191	10	1	Collector / Local Road	1300	25
412	892	894	0.193	12	1	Collector / Local Road	1300	40
413	867	879	0.546	12	1	Collector / Local Road	1300	40
414	864	865	0.234	10	1	Collector / Local Road	1300	25
415	863	864	0.209	10	1	Collector / Local Road	1300	25
416	386	844	0.843	12	1	Collector / Local Road	1300	45
417	395	1016	1.056	10	1	Collector / Local Road	1300	25
418	815	1017	0.79	10	1	Collector / Local Road	1300	25
419	808	1017	0.283	12	1	Collector / Local Road	1300	45
420	1017	1018	0.613	12	1	Collector / Local Road	1300	45
421	16	831	0.295	10	1	Collector / Local Road	1300	25
422	797	802	0.339	10	1	Collector / Local Road	1300	25
423	799	809	0.792	10	1	Collector / Local Road	1300	25
424	786	1021	1.214	10	1	Collector / Local Road	1300	25
425	550	1023	0.383	10	1	Collector / Local Road	1300	25
426	774	787	1.009	10	1	Collector / Local Road	1300	25
427	535	793	0.505	12	1	Collector / Local Road	1300	45
428	1024	1025	0.844	10	1	Collector / Local Road	1300	25
429	539	1026	0.478	10	1	Collector / Local Road	1300	25
430	766	770	0.231	12	1	Collector / Local Road	1300	40
431	733	736	0.496	10	1	Collector / Local Road	1300	25
432	674	687	0.37	10	1	Collector / Local Road	1300	25
433	669	671	0.678	10	1	Collector / Local Road	1300	25
434	689	1030	0.657	10	1	Collector / Local Road	1300	25
435	602	689	1	10	1	Collector / Local Road	1300	25
436	651	662	0.636	10	1	Collector / Local Road	1300	25
437	640	650	0.709	10	1	Collector / Local Road	1300	25
438	222	991	0.3	12	2	Principal Arterial	3600	55
439	332	1068	0.127	11	2	Minor Arterial	2800	35
440	352	1068	0.022	12	1	Minor Arterial	1400	40
441	162	166	0.641	12	3	Principal Arterial	5100	45
442	208	210	0.089	12	1	Major Arterial	1400	45
443	408	409	0.42	12	1	Minor Arterial	1300	40
444	586	587	0.996	12	2	Principal Arterial	3400	60
445	544	545	0.757	12	1	Minor Arterial	1400	55
446	233	598	0.255	12	1	Collector / Local Road	1300	50
447	233	659	0.539	12	1	Minor Arterial	1300	45
448	104	499	0.533	12	2	Principal Arterial	3400	60
449	496	641	0.081	10	1	Collector / Local Road	1300	25
450	214	1037	0.034	12	1	Major Arterial	1400	45
451	214	1038	0.033	12	2	Principal Arterial	3400	45
452	1037	1038	0.02	12	1	Collector / Local Road	1300	40
453	377	1011	0.982	12	1	Principal Arterial	1700	55
454	416	418	0.318	12	2	Principal Arterial	3400	65
455	19	1042	0.792	12	2	Principal Arterial	3600	65

Link #	U-Node	D-Node	Length (mi)	Lane Width (ft)	Number of Lanes	Roadway Type	Saturation Flow Rate (veh/hr)	FFS (mph)
456	20	147	0.15	12	2	Principal Arterial	3600	65
457	1014	1043	0.011	10	1	Collector / Local Road	1300	25
458	107	1047	0.244	12	1	Principal Arterial	1700	45
459	426	1049	0.132	12	1	Major Arterial	1400	45
460	211	1007	0.202	12	2	Freeway	4000	70
461	153	431	0.024	12	2	Principal Arterial	3600	65
462	1050	1051	0.011	10	1	Collector / Local Road	1300	25
463	1051	1052	0.073	10	1	Collector / Local Road	1300	25
464	370	1054	0.188	12	2	Principal Arterial	3600	55
465	369	1032	0.261	12	2	Major Arterial	3400	55
466	220	330	0.035	12	2	Principal Arterial	3600	45
467	220	1057	0.039	12	2	Principal Arterial	3400	45
468	872	1057	0.03	12	2	Principal Arterial	3400	40
469	403	1059	0.47	12	3	Principal Arterial	5100	45
470	1058	1059	0.014	10	1	Collector / Local Road	1300	25
471	281	1060	0.106	12	3	Principal Arterial	5100	45
472	280	1060	0.157	12	1	Ramp	1800	35
473	166	994	0.073	12	2	Principal Arterial	3400	45
474	995	1061	0.037	12	1	Collector / Local Road	1300	40
475	172	173	0.088	12	4	Principal Arterial	6800	40
476	412	1062	0.647	12	2	Principal Arterial	3400	55
477	1064	1065	0.015	10	1	Collector / Local Road	1300	25
478	411	1066	0.041	12	1	Minor Arterial	1400	50
479	433	862	0.106	11	1	Major Arterial	1400	25
480	439	862	0.161	11	1	Major Arterial	1400	25
481	440	884	0.219	11	1	Major Arterial	1400	25
482	1062	1063	0.017	12	1	Collector / Local Road	1300	40
483	406	1069	0.066	12	1	Major Arterial	1400	40
484	935	936	0.009	10	1	Collector / Local Road	1300	25
485	900	1072	0.093	12	2	Collector / Local Road	2600	40
486	936	1071	0.227	12	2	Collector / Local Road	2600	40
487	881	1073	0.442	12	2	Collector / Local Road	2600	40
488	698	1093	0.652	12	2	Principal Arterial	3400	55
489	676	1029	0.014	10	1	Collector / Local Road	1300	25
490	48	1111	1.103	12	2	Freeway	4000	70
491	42	89	0.645	12	1	Ramp	1800	35
492	279	1036	0.892	12	1	Ramp	1800	35
493	59	1079	0.016	12	1	Ramp	1800	35
494	58	1079	0.129	12	1	Major Arterial	1400	45
495	56	1079	0.018	12	1	Major Arterial	1400	45
496	92	1080	0.058	12	2	Major Arterial	2800	45
497	92	1081	0.047	12	2	Major Arterial	2800	45
498	1080	1081	0.07	12	1	Collector / Local Road	1300	40
499	95	1082	0.039	12	1	Major Arterial	1400	50
500	95	1083	0.035	12	2	Major Arterial	2800	45
501	1082	1083	0.038	12	1	Collector / Local Road	1300	40
502	541	762	0.94	12	1	Minor Arterial	1400	55
503	540	762	0.156	12	1	Minor Arterial	1400	45
504	782	1096	0.085	11	1	Minor Arterial	1400	35
505	134	1084	0.144	12	2	Principal Arterial	3400	60
506	998	1085	0.324	12	2	Principal Arterial	3400	65
507	238	248	0.542	12	2	Principal Arterial	3400	65
508	27	238	1.004	12	2	Principal Arterial	3400	55
509	150	1088	0.285	12	1	Major Arterial	1700	60
510	627	1089	0.056	12	2	Principal Arterial	3600	55
511	1087	1090	0.889	12	2	Principal Arterial	3600	55
512	232	699	0.484	12	2	Principal Arterial	3400	60

Link #	U-Node	D-Node	Length (mi)	Lane Width (ft)	Number of Lanes	Roadway Type	Saturation Flow Rate (veh/hr)	FFS (mph)
513	104	699	0.525	12	2	Principal Arterial	3400	60
514	685	1092	0.249	12	2	Principal Arterial	3400	55
515	1029	1094	0.29	12	2	Principal Arterial	3400	60
516	230	548	0.59	11	1	Minor Arterial	1400	35
517	547	727	0.808	12	1	Minor Arterial	1400	40
518	74	85	1.226	12	1	Major Arterial	1400	45
519	513	1099	0.067	12	1	Major Arterial	1400	45
520	512	1099	0.032	12	1	Major Arterial	1400	45
521	1101	1102	0.02	12	1	Collector / Local Road	1300	40
522	1102	1103	0.025	11	1	Minor Arterial	1400	25
523	1101	1103	0.037	12	1	Collector / Local Road	1300	40
524	62	501	0.112	12	1	Major Arterial	1400	45
525	1035	1106	0.385	12	1	Major Arterial	1400	45
526	592	1107	0.114	11	1	Major Arterial	1400	30
527	106	525	0.139	12	2	Minor Arterial	2800	40
528	455	458	0.823	12	1	Major Arterial	1400	45
529	558	796	0.179	11	1	Minor Arterial	1300	35
530	234	600	0.512	12	1	Collector / Local Road	1300	50
531	562	563	0.94	12	1	Collector / Local Road	1300	55
532	553	554	1.519	12	1	Minor Arterial	1300	45
533	425	807	1.639	12	1	Minor Arterial	1300	45
534	386	387	1.752	12	1	Minor Arterial	1300	45
535	22	382	2.005	12	1	Minor Arterial	1300	45
536	989	1063	0.495	12	2	Principal Arterial	3400	55
537	829	831	0.814	10	1	Collector / Local Road	1300	25
538	816	817	0.83	12	1	Collector / Local Road	1300	45
539	808	818	1.134	12	1	Collector / Local Road	1300	45
540	943	944	0.068	10	1	Collector / Local Road	1300	25
541	432	863	0.455	10	1	Collector / Local Road	1300	25
542	397	1108	0.984	10	1	Collector / Local Road	1300	25
543	800	1020	0.834	10	1	Collector / Local Road	1300	25
544	556	1109	0.977	10	1	Collector / Local Road	1300	25
545	558	785	0.669	10	1	Collector / Local Road	1300	35
546	555	778	1.228	12	1	Collector / Local Road	1300	45
547	772	776	0.13	12	1	Collector / Local Road	1300	45
548	731	732	0.52	12	1	Collector / Local Road	1300	45
549	701	1092	0.58	10	1	Collector / Local Road	1300	25
550	658	1120	0.049	10	1	Collector / Local Road	1300	25
551	742	1112	0.06	10	1	Collector / Local Road	1300	25
552	544	1115	0.369	11	1	Minor Arterial	1300	35
553	738	1117	0.179	12	1	Collector / Local Road	1300	45
554	734	1117	0.012	10	1	Collector / Local Road	1300	25
555	686	1119	0.232	10	1	Collector / Local Road	1300	25
556	825	1125	0.199	12	1	Collector / Local Road	1300	45
557	1125	1126	0.245	10	1	Collector / Local Road	1300	25
558	1129	1130	0.254	10	1	Collector / Local Road	1300	25
559	890	1129	0.209	10	1	Collector / Local Road	1300	25
560	1127	1128	0.144	10	1	Collector / Local Road	1300	25
561	910	918	0.078	10	1	Collector / Local Road	1300	25
562	255	1135	1.705	12	2	Principal Arterial	3600	65
563	1018	1138	0.98	10	1	Collector / Local Road	1300	25
564	787	1139	0.82	10	1	Collector / Local Road	1300	25
565	424	1139	0.987	10	1	Collector / Local Road	1300	25
566	548	1141	0.287	10	1	Collector / Local Road	1300	25
567	423	1143	1.64	12	1	Minor Arterial	1300	45
568	398	1144	0.105	10	1	Collector / Local Road	1300	25
569	824	1146	0.503	10	1	Collector / Local Road	1300	25



Link #	U-Node	D-Node	Length (mi)	Lane Width (ft)	Number of Lanes	Roadway Type	Saturation Flow Rate (veh/hr)	FFS (mph)
570	730	1147	0.208	11	1	Minor Arterial	1300	35
571	570	1148	0.029	10	1	Collector / Local Road	1300	25
572	738	1149	0.212	10	1	Collector / Local Road	1300	25
573	845	1150	0.305	10	1	Collector / Local Road	1300	25
574	155	1152	0.843	12	2	Collector / Local Road	2600	40
575	129	1153	0.647	12	2	Freeway	3800	60
576	155	1056	0.171	12	2	Principal Arterial	3600	55
577	368	1154	2.302	12	2	Principal Arterial	3600	55
578	1050	1154	0.142	12	2	Principal Arterial	3600	55
579	1134	1135	0.042	12	1	Major Arterial	1400	45
580	1054	1055	0.034	12	1	Principal Arterial	1800	25
581	608	657	0.427	10	1	Collector / Local Road	1300	25
582	709	719	1.036	10	1	Collector / Local Road	1300	30
583	592	709	1.219	10	1	Collector / Local Road	1300	30
584	3	10	0.254	12	2	Freeway	4000	65
585	8	12	1.265	12	2	Freeway	4000	65
586	10	1110	1.387	12	2	Freeway	4000	65
587	9	14	2.302	12	1	Principal Arterial	1700	45
588	33	35	0.52	12	2	Freeway	4000	70
589	38	412	0.266	12	2	Principal Arterial	3400	55
590	44	45	0.474	12	2	Freeway	4000	70
591	45	46	3.35	12	2	Freeway	4000	70
592	46	48	0.574	12	2	Freeway	4000	70
593	98	571	0.366	12	1	Minor Arterial	1400	40
594	676	1095	0.597	12	2	Principal Arterial	3400	60
595	104	229	2.595	12	1	Collector / Local Road	1300	45
596	142	401	0.245	12	1	Principal Arterial	1700	55
597	187	188	0.487	12	2	Principal Arterial	3400	55
598	236	607	0.197	12	1	Minor Arterial	1400	40
599	620	622	0.92	10	1	Collector / Local Road	1300	30
600	243	244	0.325	12	1	Collector / Local Road	1300	55
601	271	487	0.301	12	2	Principal Arterial	3400	55
602	93	107	1.741	12	1	Principal Arterial	1700	45
603	297	319	0.143	12	1	Major Arterial	1400	45
604	306	307	0.32	12	2	Freeway	3800	60
605	295	315	4.167	12	2	Freeway	3800	60
606	322	323	0.295	12	1	Ramp	1800	35
607	325	329	0.106	11	1	Minor Arterial	1300	35
608	305	311	0.066	12	2	Freeway	3800	60
609	309	322	0.585	12	2	Freeway	3800	60
610	315	318	0.62	12	2	Freeway	3800	60
611	302	313	1.381	12	2	Freeway	4000	70
612	225	872	0.107	12	2	Principal Arterial	3400	40
613	224	331	0.21	12	2	Principal Arterial	3400	40
614	331	332	0.36	12	2	Principal Arterial	3400	40
615	332	899	0.631	12	2	Principal Arterial	3400	40
616	174	333	2.465	12	2	Principal Arterial	3400	50
617	219	336	0.785	12	2	Principal Arterial	3400	45
618	212	219	0.271	12	2	Principal Arterial	3400	45
619	257	345	0.555	12	1	Principal Arterial	1700	45
620	206	257	0.909	12	1	Principal Arterial	1700	30
621	176	1076	0.135	12	2	Principal Arterial	3400	55
622	173	346	1.574	12	2	Principal Arterial	3400	45
623	188	347	0.193	12	2	Principal Arterial	3400	45
624	205	348	0.957	12	2	Principal Arterial	3400	65
625	264	345	1.37	11	1	Minor Arterial	1300	35
626	264	350	1.118	12	2	Minor Arterial	2600	45

Link #	U-Node	D-Node	Length (mi)	Lane Width (ft)	Number of Lanes	Roadway Type	Saturation Flow Rate (veh/hr)	FFS (mph)
627	353	875	0.086	11	2	Minor Arterial	2800	35
628	356	357	0.476	12	2	Minor Arterial	2800	40
629	358	359	0.222	12	2	Minor Arterial	2800	40
630	359	360	0.173	12	2	Minor Arterial	2800	40
631	32	302	5.808	12	2	Freeway	4000	70
632	185	363	0.232	12	2	Principal Arterial	3400	50
633	350	366	2.518	12	1	Minor Arterial	1300	45
634	258	366	2.765	12	1	Minor Arterial	1300	45
635	371	374	0.141	12	2	Major Arterial	3200	45
636	372	990	0.292	12	2	Major Arterial	3200	45
637	375	376	0.351	10	1	Collector / Local Road	1300	25
638	194	1044	0.611	12	2	Principal Arterial	3400	45
639	192	198	0.653	12	2	Principal Arterial	3400	55
640	377	1040	1.308	12	1	Principal Arterial	1700	55
641	196	378	1.126	12	2	Principal Arterial	3400	55
642	22	263	4.165	12	2	Principal Arterial	3400	65
643	21	366	3.031	12	1	Minor Arterial	1300	45
644	383	384	0.334	12	1	Minor Arterial	1300	45
645	383	385	1.078	12	1	Minor Arterial	1300	45
646	385	386	0.94	12	1	Minor Arterial	1300	45
647	387	388	0.258	11	1	Minor Arterial	1300	35
648	256	388	0.299	11	1	Minor Arterial	1300	35
649	144	256	0.753	12	1	Minor Arterial	1300	45
650	258	259	2.912	12	1	Minor Arterial	1300	45
651	259	367	1.437	12	1	Minor Arterial	1300	45
652	389	436	1.032	12	2	Principal Arterial	3400	65
653	291	389	1.118	12	2	Principal Arterial	3400	65
654	222	368	1.886	12	2	Principal Arterial	3600	55
655	147	393	1.122	12	1	Minor Arterial	1300	45
656	393	395	1.209	12	1	Minor Arterial	1300	45
657	396	397	1.149	12	1	Minor Arterial	1300	45
658	394	398	2.603	12	1	Minor Arterial	1300	45
659	400	401	2.222	12	1	Principal Arterial	1700	55
660	402	1053	0.955	12	2	Principal Arterial	3400	45
661	167	404	0.715	12	1	Major Arterial	1400	40
662	404	405	0.216	12	1	Major Arterial	1400	40
663	405	406	0.225	12	1	Major Arterial	1400	40
664	407	1069	0.469	11	1	Major Arterial	1400	30
665	407	410	0.126	12	2	Minor Arterial	2800	40
666	166	408	0.391	12	1	Minor Arterial	1300	40
667	409	1132	0.165	12	1	Minor Arterial	1300	40
668	355	410	0.216	12	2	Minor Arterial	2800	40
669	381	416	0.503	12	2	Principal Arterial	3400	65
670	261	417	1.356	12	2	Principal Arterial	3400	65
671	290	293	0.608	12	2	Principal Arterial	3400	65
672	392	419	0.233	12	1	Principal Arterial	1700	25
673	419	420	0.259	12	1	Principal Arterial	1700	35
674	83	421	0.469	12	1	Principal Arterial	1700	45
675	137	1022	1.57	12	1	Major Arterial	1400	45
676	422	424	3.048	12	1	Minor Arterial	1300	45
677	424	1143	1.048	12	1	Minor Arterial	1300	45
678	141	807	0.555	12	1	Minor Arterial	1300	45
679	140	426	0.621	12	1	Minor Arterial	1300	45
680	392	427	1.007	12	2	Major Arterial	3200	45
681	137	139	2.546	12	2	Principal Arterial	3600	65
682	253	429	0.219	11	1	Major Arterial	1400	35
683	432	433	0.041	11	1	Major Arterial	1400	25

Link #	U-Node	D-Node	Length (mi)	Lane Width (ft)	Number of Lanes	Roadway Type	Saturation Flow Rate (veh/hr)	FFS (mph)
684	153	437	0.926	12	1	Major Arterial	1400	40
685	438	884	0.776	11	1	Major Arterial	1400	25
686	221	440	0.624	12	1	Major Arterial	1400	45
687	169	441	0.034	11	1	Major Arterial	1400	35
688	367	443	1.431	12	1	Minor Arterial	1300	40
689	444	927	0.749	12	1	Minor Arterial	1300	40
690	443	445	2.588	12	1	Minor Arterial	1300	40
691	444	445	0.804	12	1	Minor Arterial	1300	40
692	450	1078	0.208	11	1	Major Arterial	1400	35
693	213	450	0.167	11	1	Major Arterial	1400	25
694	212	451	0.436	11	1	Major Arterial	1400	25
695	451	452	0.389	11	1	Major Arterial	1400	25
696	452	1077	0.364	11	1	Major Arterial	1400	35
697	453	454	2.515	11	2	Minor Arterial	2800	35
698	454	455	0.539	12	1	Major Arterial	1400	45
699	458	460	0.213	12	1	Major Arterial	1400	55
700	464	471	5.424	11	1	Minor Arterial	1300	35
701	266	471	3.288	11	1	Minor Arterial	1300	35
702	68	471	3.669	11	1	Minor Arterial	1300	35
703	68	459	0.574	12	1	Major Arterial	1400	45
704	170	472	0.588	12	2	Minor Arterial	2800	40
705	68	476	0.546	12	1	Major Arterial	1400	45
706	476	477	2.106	12	1	Major Arterial	1400	55
707	477	478	1.568	12	1	Major Arterial	1400	55
708	478	479	1.642	12	1	Major Arterial	1400	55
709	479	480	0.484	11	1	Major Arterial	1400	35
710	90	480	0.609	11	1	Major Arterial	1400	35
711	480	481	0.751	11	1	Minor Arterial	1300	35
712	481	482	2.687	11	1	Minor Arterial	1300	35
713	86	471	5.379	11	1	Minor Arterial	1300	35
714	82	486	0.481	12	2	Principal Arterial	3400	55
715	86	485	2.644	12	2	Principal Arterial	3400	65
716	488	489	0.404	12	2	Principal Arterial	3400	45
717	489	490	0.311	12	2	Principal Arterial	3400	55
718	265	490	1.321	12	2	Principal Arterial	3400	55
719	226	228	0.246	12	1	Minor Arterial	1400	40
720	60	288	0.637	12	2	Principal Arterial	3400	45
721	269	270	0.341	12	2	Principal Arterial	3400	65
722	484	641	0.914	10	1	Collector / Local Road	1300	25
723	69	497	1.042	10	1	Collector / Local Road	1300	25
724	41	308	10.466	12	2	Freeway	4000	70
725	549	550	0.507	11	1	Minor Arterial	1300	35
726	230	499	0.551	12	2	Principal Arterial	3400	60
727	273	500	2.783	11	1	Minor Arterial	1300	35
728	272	500	1.284	11	1	Minor Arterial	1300	35
729	69	272	2.15	11	1	Minor Arterial	1300	35
730	73	504	0.828	12	1	Minor Arterial	1400	40
731	131	505	2.223	12	2	Freeway	3800	60
732	505	508	1.832	12	2	Freeway	3800	60
733	507	824	4.03	12	1	Major Arterial	1400	45
734	515	516	0.217	12	1	Major Arterial	1400	45
735	72	85	1.707	12	1	Major Arterial	1400	55
736	520	521	0.168	11	1	Minor Arterial	1400	30
737	97	521	0.146	11	1	Minor Arterial	1400	30
738	276	523	1.808	12	1	Minor Arterial	1400	40
739	56	1099	1.185	12	1	Major Arterial	1400	45
740	526	527	0.191	12	1	Minor Arterial	1400	40

Link #	U-Node	D-Node	Length (mi)	Lane Width (ft)	Number of Lanes	Roadway Type	Saturation Flow Rate (veh/hr)	FFS (mph)
741	248	529	4.463	12	1	Minor Arterial	1400	40
742	132	134	1.009	12	2	Principal Arterial	3400	60
743	105	534	0.611	12	2	Major Arterial	2800	45
744	535	1096	1.433	12	1	Minor Arterial	1400	45
745	535	536	1.156	12	1	Minor Arterial	1400	45
746	545	546	0.497	12	1	Collector / Local Road	1300	55
747	547	1140	0.424	12	1	Minor Arterial	1400	40
748	134	549	0.567	11	1	Minor Arterial	1300	35
749	551	552	1.009	12	1	Minor Arterial	1300	45
750	554	555	1.118	12	1	Minor Arterial	1300	45
751	559	795	1.085	12	1	Collector / Local Road	1300	55
752	559	560	0.404	12	1	Collector / Local Road	1300	45
753	243	563	0.817	12	1	Collector / Local Road	1300	55
754	244	564	0.951	12	1	Collector / Local Road	1300	55
755	546	564	1.009	12	1	Collector / Local Road	1300	55
756	566	1153	3.814	12	2	Freeway	3800	60
757	112	113	0.276	12	2	Principal Arterial	3400	45
758	109	570	0.405	11	1	Major Arterial	1400	30
759	526	570	0.179	11	1	Major Arterial	1400	30
760	102	526	0.356	11	1	Major Arterial	1400	30
761	97	572	0.515	12	1	Minor Arterial	1400	40
762	573	1102	0.232	11	1	Minor Arterial	1400	25
763	251	573	0.661	12	1	Minor Arterial	1400	40
764	574	575	3.724	12	1	Major Arterial	1400	55
765	575	576	0.907	12	1	Major Arterial	1400	55
766	577	578	0.514	11	1	Minor Arterial	1400	30
767	101	579	0.237	11	2	Minor Arterial	2800	30
768	100	580	0.157	11	2	Minor Arterial	2800	30
769	527	580	0.2	11	2	Minor Arterial	2800	30
770	581	582	0.357	11	2	Minor Arterial	2800	30
771	245	586	1.006	12	2	Principal Arterial	3400	60
772	249	588	1.846	12	1	Major Arterial	1400	40
773	100	593	0.326	11	1	Major Arterial	1400	30
774	100	102	0.191	12	1	Major Arterial	1400	45
775	596	1091	0.325	12	2	Principal Arterial	3400	45
776	582	597	0.362	12	2	Principal Arterial	3400	45
777	110	582	0.347	12	2	Principal Arterial	3400	45
778	236	602	1.863	12	1	Collector / Local Road	1300	50
779	577	1106	0.244	12	2	Major Arterial	2800	45
780	96	101	0.191	12	1	Minor Arterial	1400	40
781	604	605	0.45	11	1	Minor Arterial	1400	30
782	605	606	0.301	12	1	Minor Arterial	1400	40
783	611	612	1.19	12	1	Major Arterial	1400	45
784	612	636	0.09	12	1	Major Arterial	1400	45
785	614	1035	2.337	10	1	Collector / Local Road	1300	25
786	614	615	1.637	10	1	Collector / Local Road	1300	25
787	239	615	0.26	10	1	Collector / Local Road	1300	25
788	70	617	1.012	10	1	Collector / Local Road	1300	25
789	617	619	0.902	10	1	Collector / Local Road	1300	25
790	241	619	0.192	12	1	Collector / Local Road	1300	45
791	240	242	2.112	12	1	Collector / Local Road	1300	55
792	242	618	1.214	12	1	Collector / Local Road	1300	40
793	61	619	4.639	12	1	Collector / Local Road	1300	45
794	623	624	1.185	12	1	Collector / Local Road	1300	50
795	624	625	0.351	12	1	Collector / Local Road	1300	50
796	513	516	1.061	12	1	Major Arterial	1400	45
797	502	528	0.444	10	1	Collector / Local Road	1300	25

Link #	U-Node	D-Node	Length (mi)	Lane Width (ft)	Number of Lanes	Roadway Type	Saturation Flow Rate (veh/hr)	FFS (mph)
798	250	1034	3.547	12	1	Minor Arterial	1400	40
799	278	522	2.201	12	1	Collector / Local Road	1300	40
800	500	632	2.352	10	1	Collector / Local Road	1300	25
801	510	517	3.128	11	1	Minor Arterial	1300	35
802	617	633	1.371	10	1	Collector / Local Road	1300	25
803	477	634	2.186	10	1	Collector / Local Road	1300	25
804	272	497	1.722	11	1	Minor Arterial	1300	35
805	616	1031	0.485	10	1	Collector / Local Road	1300	25
806	613	636	1.421	12	1	Major Arterial	1400	55
807	616	637	2.314	10	1	Collector / Local Road	1300	25
808	482	635	1.637	10	1	Collector / Local Road	1300	25
809	612	638	0.73	10	1	Collector / Local Road	1300	25
810	478	634	2.012	10	1	Collector / Local Road	1300	25
811	483	484	0.927	11	1	Minor Arterial	1300	35
812	623	638	1.011	10	1	Collector / Local Road	1300	25
813	242	639	1.358	10	1	Collector / Local Road	1300	35
814	615	643	1.265	10	1	Collector / Local Road	1300	25
815	624	647	1.241	12	1	Collector / Local Road	1300	50
816	639	644	1.188	10	1	Collector / Local Road	1300	25
817	575	614	1.563	10	1	Collector / Local Road	1300	25
818	575	646	1.74	10	1	Collector / Local Road	1300	25
819	93	421	1.908	12	1	Principal Arterial	1700	55
820	643	657	1.003	10	1	Collector / Local Road	1300	25
821	639	1142	1.911	10	1	Collector / Local Road	1300	35
822	610	1104	1.507	12	1	Major Arterial	1400	55
823	90	487	0.523	12	2	Principal Arterial	3400	45
824	650	1142	1.922	10	1	Collector / Local Road	1300	35
825	503	652	0.999	10	1	Collector / Local Road	1300	25
826	488	654	0.196	10	1	Collector / Local Road	1300	25
827	653	655	1.293	11	1	Minor Arterial	1300	35
828	655	656	0.474	11	1	Minor Arterial	1300	35
829	659	660	0.815	10	1	Collector / Local Road	1300	25
830	658	660	0.507	10	1	Collector / Local Road	1300	25
831	490	671	1.219	10	1	Collector / Local Road	1300	25
832	601	653	0.996	12	1	Collector / Local Road	1300	50
833	654	670	0.748	10	1	Collector / Local Road	1300	25
834	651	664	1.658	10	1	Collector / Local Road	1300	25
835	665	666	0.39	10	1	Collector / Local Road	1300	25
836	667	1093	0.725	11	1	Minor Arterial	1300	35
837	663	688	1.163	10	1	Collector / Local Road	1300	25
838	671	674	1.28	10	1	Collector / Local Road	1300	25
839	236	1035	1.158	12	1	Major Arterial	1400	45
840	518	678	0.302	10	1	Collector / Local Road	1300	25
841	499	675	0.561	10	1	Collector / Local Road	1300	25
842	677	678	0.228	10	1	Collector / Local Road	1300	25
843	606	679	0.564	10	1	Collector / Local Road	1300	25
844	681	682	0.371	10	1	Collector / Local Road	1300	25
845	578	680	0.546	10	1	Collector / Local Road	1300	25
846	682	1119	0.4	10	1	Collector / Local Road	1300	25
847	583	681	1.103	12	1	Collector / Local Road	1300	45
848	604	679	0.492	10	1	Collector / Local Road	1300	25
849	690	1030	1.345	10	1	Collector / Local Road	1300	25
850	690	691	0.463	10	1	Collector / Local Road	1300	25
851	521	579	0.191	10	1	Collector / Local Road	1300	25
852	1082	1100	0.576	12	1	Major Arterial	1400	50
853	586	689	1.005	10	1	Collector / Local Road	1300	25
854	691	692	0.548	10	1	Collector / Local Road	1300	25

Link #	U-Node	D-Node	Length (mi)	Lane Width (ft)	Number of Lanes	Roadway Type	Saturation Flow Rate (veh/hr)	FFS (mph)
855	520	693	0.316	10	1	Collector / Local Road	1300	30
856	592	692	0.344	10	1	Collector / Local Road	1300	25
857	572	694	0.122	10	1	Collector / Local Road	1300	25
858	589	690	0.677	12	1	Collector / Local Road	1300	40
859	104	703	0.404	12	1	Collector / Local Road	1300	45
860	590	696	0.4	10	1	Collector / Local Road	1300	25
861	231	668	1.377	11	1	Minor Arterial	1300	35
862	678	708	1.18	10	1	Collector / Local Road	1300	25
863	580	702	0.123	10	1	Collector / Local Road	1300	25
864	703	1141	0.731	10	1	Collector / Local Road	1300	25
865	704	1029	1.26	10	1	Collector / Local Road	1300	25
866	593	705	0.235	10	1	Collector / Local Road	1300	25
867	702	705	0.259	10	1	Collector / Local Road	1300	30
868	246	601	2.016	12	1	Collector / Local Road	1300	45
869	591	706	0.261	10	1	Collector / Local Road	1300	25
870	705	709	0.407	10	1	Collector / Local Road	1300	30
871	705	710	0.298	10	1	Collector / Local Road	1300	25
872	707	713	0.178	10	1	Collector / Local Road	1300	25
873	581	710	0.296	10	1	Collector / Local Road	1300	25
874	709	713	0.152	10	1	Collector / Local Road	1300	30
875	704	717	0.979	10	1	Collector / Local Road	1300	25
876	717	1028	1.055	10	1	Collector / Local Road	1300	25
877	713	1091	0.328	10	1	Collector / Local Road	1300	30
878	597	712	0.294	10	1	Collector / Local Road	1300	25
879	701	724	1.175	10	1	Collector / Local Road	1300	25
880	595	596	0.336	12	2	Principal Arterial	3400	45
881	596	720	0.134	10	1	Collector / Local Road	1300	25
882	719	1091	0.349	12	2	Principal Arterial	3400	45
883	584	726	0.715	10	1	Collector / Local Road	1300	25
884	720	721	0.118	10	1	Collector / Local Road	1300	25
885	721	1091	0.365	12	1	Collector / Local Road	1300	45
886	723	1122	1.006	10	1	Collector / Local Road	1300	25
887	699	732	1.273	12	1	Collector / Local Road	1300	55
888	698	723	1.811	12	1	Minor Arterial	1300	45
889	711	733	0.755	11	1	Minor Arterial	1300	35
890	723	724	0.996	12	1	Collector / Local Road	1300	45
891	595	728	0.432	12	1	Collector / Local Road	1300	45
892	721	728	0.43	12	1	Collector / Local Road	1300	45
893	725	729	0.473	10	1	Collector / Local Road	1300	25
894	724	745	0.725	10	1	Collector / Local Road	1300	25
895	729	737	1.011	10	1	Collector / Local Road	1300	25
896	708	730	0.994	10	1	Collector / Local Road	1300	25
897	727	731	1.009	12	1	Collector / Local Road	1300	45
898	728	734	0.501	12	1	Collector / Local Road	1300	45
899	231	736	1.163	11	1	Minor Arterial	1300	35
900	583	740	1.166	12	1	Collector / Local Road	1300	45
901	587	1149	0.903	10	1	Collector / Local Road	1300	25
902	719	739	0.654	10	1	Collector / Local Road	1300	30
903	739	742	0.389	10	1	Collector / Local Road	1300	25
904	729	1027	2.301	10	1	Collector / Local Road	1300	25
905	736	1115	0.764	11	1	Minor Arterial	1300	35
906	722	754	1.444	12	1	Collector / Local Road	1300	45
907	245	749	1.511	12	1	Collector / Local Road	1300	45
908	545	732	1.062	12	1	Collector / Local Road	1300	55
909	738	751	0.852	12	1	Collector / Local Road	1300	45
910	752	755	0.366	10	1	Collector / Local Road	1300	25
911	747	753	0.251	10	1	Collector / Local Road	1300	25

Link #	U-Node	D-Node	Length (mi)	Lane Width (ft)	Number of Lanes	Roadway Type	Saturation Flow Rate (veh/hr)	FFS (mph)
912	547	757	0.921	10	1	Collector / Local Road	1300	25
913	751	756	0.573	10	1	Collector / Local Road	1300	25
914	586	761	2.819	12	1	Collector / Local Road	1300	45
915	741	759	1.494	12	1	Collector / Local Road	1300	45
916	756	763	0.981	10	1	Collector / Local Road	1300	25
917	543	760	0.256	10	1	Collector / Local Road	1300	25
918	541	755	1.082	12	1	Collector / Local Road	1300	45
919	759	1136	0.919	12	1	Collector / Local Road	1300	45
920	543	759	0.354	12	1	Minor Arterial	1400	55
921	763	764	1.008	12	1	Collector / Local Road	1300	45
922	728	764	2.597	12	1	Collector / Local Road	1300	45
923	762	765	0.536	12	1	Collector / Local Road	1300	45
924	764	767	1.027	12	1	Collector / Local Road	1300	40
925	564	1136	1.608	12	1	Collector / Local Road	1300	45
926	765	769	0.539	12	1	Collector / Local Road	1300	45
927	757	768	1.547	10	1	Collector / Local Road	1300	25
928	770	999	1.083	10	1	Collector / Local Road	1300	25
929	535	764	1.011	12	1	Collector / Local Road	1300	45
930	542	772	1.249	12	1	Collector / Local Road	1300	45
931	776	779	0.73	12	1	Collector / Local Road	1300	45
932	778	780	0.485	10	1	Collector / Local Road	1300	25
933	770	782	1.049	12	1	Collector / Local Road	1300	40
934	560	779	1.635	12	1	Collector / Local Road	1300	45
935	243	1124	0.507	10	1	Collector / Local Road	1300	25
936	784	785	0.169	10	1	Collector / Local Road	1300	35
937	507	1097	1.449	12	1	Minor Arterial	1400	55
938	788	793	0.673	10	1	Collector / Local Road	1300	25
939	788	789	0.618	10	1	Collector / Local Road	1300	25
940	425	1022	0.772	10	1	Collector / Local Road	1300	25
941	552	793	0.47	12	1	Collector / Local Road	1300	45
942	537	554	1.036	10	1	Collector / Local Road	1300	25
943	551	789	0.564	12	1	Collector / Local Road	1300	45
944	549	791	0.495	10	1	Collector / Local Road	1300	25
945	797	1005	0.509	10	1	Collector / Local Road	1300	25
946	554	798	1.006	10	1	Collector / Local Road	1300	25
947	798	1020	0.682	10	1	Collector / Local Road	1300	25
948	559	805	1.038	10	1	Collector / Local Road	1300	25
949	806	1019	0.575	10	1	Collector / Local Road	1300	25
950	801	811	1.002	12	1	Collector / Local Road	1300	45
951	786	808	2.475	10	1	Collector / Local Road	1300	25
952	809	810	1.517	12	1	Collector / Local Road	1300	45
953	810	812	0.838	12	1	Collector / Local Road	1300	45
954	803	813	0.977	10	1	Collector / Local Road	1300	25
955	813	814	0.817	12	1	Collector / Local Road	1300	45
956	395	814	1.825	12	1	Collector / Local Road	1300	45
957	817	818	0.439	12	1	Collector / Local Road	1300	45
958	429	1015	0.244	10	1	Collector / Local Road	1300	25
959	819	821	1.373	10	1	Collector / Local Road	1300	25
960	821	823	0.937	10	1	Collector / Local Road	1300	25
961	820	824	1.364	10	1	Collector / Local Road	1300	25
962	255	817	1.051	12	1	Collector / Local Road	1300	45
963	823	1014	0.737	10	1	Collector / Local Road	1300	25
964	393	1137	2.731	10	1	Collector / Local Road	1300	25
965	831	1137	1.848	10	1	Collector / Local Road	1300	25
966	830	988	0.477	10	1	Collector / Local Road	1300	25
967	498	529	0.155	12	1	Major Arterial	1400	45
968	834	835	0.081	10	1	Collector / Local Road	1300	30

Link #	U-Node	D-Node	Length (mi)	Lane Width (ft)	Number of Lanes	Roadway Type	Saturation Flow Rate (veh/hr)	FFS (mph)
969	388	836	0.284	10	1	Collector / Local Road	1300	25
970	839	1013	0.45	10	1	Collector / Local Road	1300	25
971	835	839	0.531	10	1	Collector / Local Road	1300	30
972	827	841	1.876	10	1	Collector / Local Road	1300	25
973	368	837	3.796	12	2	Collector / Local Road	2600	45
974	840	851	1.896	10	1	Collector / Local Road	1300	25
975	372	842	0.281	10	1	Collector / Local Road	1300	25
976	374	843	0.184	10	1	Collector / Local Road	1300	25
977	844	845	0.582	12	1	Collector / Local Road	1300	45
978	846	848	0.847	12	1	Collector / Local Road	1300	45
979	842	850	0.561	10	1	Collector / Local Road	1300	25
980	849	1012	0.355	10	1	Collector / Local Road	1300	25
981	849	850	0.216	10	1	Collector / Local Road	1300	25
982	851	854	0.659	12	1	Collector / Local Road	1300	45
983	851	852	0.485	12	1	Collector / Local Road	1300	45
984	855	861	0.142	10	1	Collector / Local Road	1300	25
985	854	859	1.013	12	1	Collector / Local Road	1300	45
986	856	865	0.276	10	1	Collector / Local Road	1300	25
987	853	863	0.466	10	1	Collector / Local Road	1300	25
988	858	861	0.929	10	1	Collector / Local Road	1300	25
989	849	866	0.377	12	1	Collector / Local Road	1300	40
990	850	869	0.446	10	1	Collector / Local Road	1300	25
991	865	867	1.234	10	1	Collector / Local Road	1300	25
992	844	877	1.141	10	1	Collector / Local Road	1300	25
993	843	868	0.781	10	1	Collector / Local Road	1300	25
994	861	873	0.235	10	1	Collector / Local Road	1300	25
995	858	867	0.24	12	1	Collector / Local Road	1300	40
996	867	870	0.29	10	1	Collector / Local Road	1300	25
997	866	869	0.291	10	1	Collector / Local Road	1300	25
998	846	891	0.902	10	1	Collector / Local Road	1300	25
999	354	869	0.226	10	1	Collector / Local Road	1300	25
1000	412	873	0.26	10	1	Collector / Local Road	1300	25
1001	875	1033	0.299	11	2	Minor Arterial	2800	35
1002	438	878	0.801	10	1	Collector / Local Road	1300	25
1003	385	874	1.144	10	1	Collector / Local Road	1300	25
1004	411	880	0.344	10	1	Collector / Local Road	1300	25
1005	881	1033	0.234	12	2	Collector / Local Road	2600	40
1006	439	883	1.05	10	1	Collector / Local Road	1300	25
1007	404	880	0.218	10	1	Collector / Local Road	1300	25
1008	878	885	0.506	10	1	Collector / Local Road	1300	25
1009	434	879	0.24	12	1	Collector / Local Road	1300	40
1010	882	884	0.694	10	1	Collector / Local Road	1300	25
1011	406	886	0.765	10	1	Collector / Local Road	1300	25
1012	848	904	1.943	12	1	Collector / Local Road	1300	45
1013	886	892	0.302	10	1	Collector / Local Road	1300	25
1014	893	1061	0.606	12	1	Collector / Local Road	1300	40
1015	887	895	0.243	10	1	Collector / Local Road	1300	25
1016	894	896	0.265	12	1	Collector / Local Road	1300	40
1017	895	896	0.097	12	1	Collector / Local Road	1300	40
1018	356	895	0.374	12	1	Collector / Local Road	1300	40
1019	377	919	1.942	10	1	Collector / Local Road	1300	25
1020	356	897	0.256	12	1	Collector / Local Road	1300	40
1021	897	900	0.523	12	1	Collector / Local Road	1300	40
1022	885	889	0.291	12	1	Collector / Local Road	1300	45
1023	890	902	0.93	10	1	Collector / Local Road	1300	25
1024	902	915	0.664	10	1	Collector / Local Road	1300	25
1025	900	1071	0.571	12	2	Collector / Local Road	2600	40



Link #	U-Node	D-Node	Length (mi)	Lane Width (ft)	Number of Lanes	Roadway Type	Saturation Flow Rate (veh/hr)	FFS (mph)
1026	894	909	0.503	10	1	Collector / Local Road	1300	25
1027	908	909	0.368	10	1	Collector / Local Road	1300	25
1028	1010	1127	0.318	10	1	Collector / Local Road	1300	25
1029	906	1132	0.226	10	1	Collector / Local Road	1300	25
1030	903	913	0.337	10	1	Collector / Local Road	1300	25
1031	910	911	0.725	10	1	Collector / Local Road	1300	25
1032	911	912	0.126	10	1	Collector / Local Road	1300	25
1033	921	922	0.413	12	1	Collector / Local Road	1300	55
1034	383	915	0.85	12	1	Collector / Local Road	1300	45
1035	904	926	0.583	12	1	Collector / Local Road	1300	45
1036	912	924	0.294	10	1	Collector / Local Road	1300	25
1037	357	928	0.555	10	1	Collector / Local Road	1300	25
1038	897	923	0.656	10	1	Collector / Local Road	1300	25
1039	919	1040	1.814	10	1	Collector / Local Road	1300	25
1040	918	929	0.219	10	1	Collector / Local Road	1300	25
1041	914	930	0.284	10	1	Collector / Local Road	1300	25
1042	927	989	1.187	12	1	Collector / Local Road	1300	40
1043	930	931	0.161	10	1	Collector / Local Road	1300	25
1044	924	946	0.297	10	1	Collector / Local Road	1300	25
1045	358	930	0.423	10	1	Collector / Local Road	1300	25
1046	933	937	0.289	10	1	Collector / Local Road	1300	35
1047	358	928	0.634	10	1	Collector / Local Road	1300	25
1048	930	945	0.379	10	1	Collector / Local Road	1300	25
1049	929	941	0.607	10	1	Collector / Local Road	1300	25
1050	923	935	0.658	10	1	Collector / Local Road	1300	25
1051	929	943	0.417	10	1	Collector / Local Road	1300	25
1052	907	942	1.346	10	1	Collector / Local Road	1300	25
1053	941	943	0.635	10	1	Collector / Local Road	1300	25
1054	444	937	0.598	10	1	Collector / Local Road	1300	35
1055	944	946	0.4	10	1	Collector / Local Road	1300	25
1056	939	952	0.675	12	1	Collector / Local Road	1300	45
1057	926	953	0.637	12	1	Collector / Local Road	1300	45
1058	946	947	0.123	10	1	Collector / Local Road	1300	25
1059	944	949	0.397	10	1	Collector / Local Road	1300	25
1060	921	952	1.414	12	1	Collector / Local Road	1300	55
1061	947	954	0.387	10	1	Collector / Local Road	1300	25
1062	939	953	1.074	12	1	Collector / Local Road	1300	45
1063	472	954	0.338	10	1	Collector / Local Road	1300	25
1064	949	956	0.25	10	1	Collector / Local Road	1300	25
1065	952	957	0.886	12	1	Collector / Local Road	1300	55
1066	436	955	1.101	10	1	Collector / Local Road	1300	30
1067	445	955	0.996	10	1	Collector / Local Road	1300	35
1068	952	958	1.102	12	1	Collector / Local Road	1300	45
1069	950	959	1.051	12	1	Collector / Local Road	1300	40
1070	960	961	0.98	12	2	Collector / Local Road	2600	40
1071	962	963	0.54	12	1	Collector / Local Road	1300	40
1072	957	964	0.7	12	1	Collector / Local Road	1300	45
1073	942	969	3.149	10	1	Collector / Local Road	1300	25
1074	965	966	0.274	12	1	Collector / Local Road	1300	45
1075	969	1010	2.92	10	1	Collector / Local Road	1300	25
1076	967	968	0.219	10	1	Collector / Local Road	1300	25
1077	261	964	0.894	10	1	Collector / Local Road	1300	25
1078	966	970	1.273	12	1	Collector / Local Road	1300	55
1079	967	971	0.939	12	1	Collector / Local Road	1300	40
1080	417	970	0.635	10	1	Collector / Local Road	1300	25
1081	382	970	1.487	12	1	Collector / Local Road	1300	55
1082	473	971	1.376	12	1	Collector / Local Road	1300	40

Link #	U-Node	D-Node	Length (mi)	Lane Width (ft)	Number of Lanes	Roadway Type	Saturation Flow Rate (veh/hr)	FFS (mph)
1083	969	972	1.366	10	1	Collector / Local Road	1300	25
1084	972	973	0.931	10	1	Collector / Local Road	1300	25
1085	416	974	1.137	10	1	Collector / Local Road	1300	25
1086	382	973	0.985	12	1	Collector / Local Road	1300	55
1087	381	974	1.265	10	1	Collector / Local Road	1300	25
1088	443	976	0.699	10	1	Collector / Local Road	1300	25
1089	972	977	0.736	10	1	Collector / Local Road	1300	25
1090	977	979	0.917	12	1	Collector / Local Road	1300	55
1091	259	975	1.349	10	1	Collector / Local Road	1300	25
1092	379	978	0.821	12	1	Collector / Local Road	1300	55
1093	348	980	3.644	12	1	Principal Arterial	1700	45
1094	257	981	0.619	12	1	Collector / Local Road	1300	40
1095	257	982	0.41	10	1	Collector / Local Road	1300	30
1096	982	1044	0.667	10	1	Collector / Local Road	1300	35
1097	223	448	1.654	12	1	Minor Arterial	1300	40
1098	448	449	2.531	12	1	Minor Arterial	1300	45
1099	214	264	7.359	12	2	Principal Arterial	3400	45
1100	451	985	0.727	10	1	Collector / Local Road	1300	25
1101	985	986	0.127	10	1	Collector / Local Road	1300	35
1102	342	986	0.11	12	1	Collector / Local Road	1300	40
1103	214	351	7.938	12	1	Major Arterial	1400	45
1104	362	1038	2.799	12	2	Principal Arterial	3400	45
1105	291	975	2.315	10	1	Collector / Local Road	1300	25
1106	411	1067	0.724	12	1	Minor Arterial	1400	50
1107	990	1032	0.249	12	2	Major Arterial	3200	55
1108	31	284	0.847	12	2	Principal Arterial	3400	45
1109	28	50	0.979	12	2	Principal Arterial	3400	55
1110	28	1145	0.277	10	1	Collector / Local Road	1300	25
1111	267	285	0.859	12	2	Principal Arterial	3400	65
1112	268	495	2.106	12	2	Principal Arterial	3400	65
1113	376	838	0.842	10	1	Collector / Local Road	1300	25
1114	329	1006	0.41	10	1	Collector / Local Road	1300	25
1115	52	125	0.612	12	2	Principal Arterial	3400	50
1116	35	211	5.447	12	2	Freeway	4000	70
1117	29	271	1.789	12	2	Principal Arterial	3400	65
1118	218	475	6.23	11	1	Minor Arterial	1300	35
1119	223	446	1.559	12	1	Minor Arterial	1300	40
1120	435	958	0.948	12	1	Collector / Local Road	1300	45
1121	31	1070	0.668	12	1	Collector / Local Road	1300	40
1122	919	1127	0.566	10	1	Collector / Local Road	1300	25
1123	904	1129	0.619	10	1	Collector / Local Road	1300	25
1124	847	852	0.385	10	1	Collector / Local Road	1300	25
1125	386	1011	3.807	10	1	Collector / Local Road	1300	35
1126	848	1042	2.767	10	1	Collector / Local Road	1300	35
1127	811	1125	2.113	12	1	Collector / Local Road	1300	45
1128	806	1018	1.565	12	1	Collector / Local Road	1300	45
1129	774	803	2.719	10	1	Collector / Local Road	1300	25
1130	555	809	0.811	12	1	Collector / Local Road	1300	45
1131	744	767	2.028	12	1	Collector / Local Road	1300	40
1132	546	757	1.245	10	1	Collector / Local Road	1300	25
1133	565	1147	0.855	11	1	Minor Arterial	1300	35
1134	265	674	0.876	10	1	Collector / Local Road	1300	25
1135	483	645	1.128	10	1	Collector / Local Road	1300	25
1136	239	625	1.933	10	1	Collector / Local Road	1300	25
1137	574	1031	2.238	10	1	Collector / Local Road	1300	25
1138	266	464	4.274	12	1	Major Arterial	1400	45
1139	463	464	1.458	12	1	Major Arterial	1400	45

Link #	U-Node	D-Node	Length (mi)	Lane Width (ft)	Number of Lanes	Roadway Type	Saturation Flow Rate (veh/hr)	FFS (mph)
1140	813	818	2.273	12	1	Collector / Local Road	1300	45
1141	482	483	1.312	11	1	Minor Arterial	1300	35
1142	1009	1078	0.576	12	1	Major Arterial	1400	45
1143	65	71	6.283	12	2	Freeway	4000	70
1144	345	351	2.705	12	1	Principal Arterial	1700	45
1145	400	1011	2.369	12	1	Principal Arterial	1700	45
1146	263	379	1.508	12	2	Principal Arterial	3400	65
1147	18	20	1.681	12	2	Principal Arterial	3600	65
1148	147	1014	0.957	12	2	Principal Arterial	3600	65
1149	145	255	3.551	12	2	Principal Arterial	3600	65
1150	140	142	0.98	12	2	Principal Arterial	3600	65
1151	252	442	1.404	12	1	Major Arterial	1400	45
1152	427	428	0.124	12	2	Major Arterial	3400	65
1153	264	1044	0.773	12	2	Principal Arterial	3400	45
1154	191	347	1.489	12	2	Principal Arterial	3400	45
1155	136	420	0.365	12	1	Principal Arterial	1700	45
1156	426	1048	0.4	12	1	Major Arterial	1400	45
1157	253	1049	0.429	11	1	Major Arterial	1400	35
1158	429	442	1.071	11	1	Major Arterial	1400	35
1159	401	1048	0.439	12	1	Major Arterial	1400	45
1160	1022	1024	2.18	12	1	Major Arterial	1400	45
1161	107	1024	5.887	12	1	Major Arterial	1400	45
1162	138	253	1.102	12	1	Major Arterial	1400	45
1163	138	140	0.951	12	2	Principal Arterial	3600	65
1164	36	216	2.019	12	2	Freeway	4000	65
1165	34	186	0.313	12	1	Ramp	1900	35
1166	154	993	0.167	12	2	Principal Arterial	3600	65
1167	155	991	0.194	12	2	Principal Arterial	3600	55
1168	1054	1056	2.393	12	2	Principal Arterial	3600	55
1169	466	995	0.518	12	2	Principal Arterial	3400	45
1170	55	361	1.368	12	2	Principal Arterial	3400	45
1171	54	996	0.297	12	2	Principal Arterial	3400	45
1172	879	1062	0.412	12	1	Collector / Local Road	1300	45
1173	168	1064	0.564	12	2	Principal Arterial	3400	65
1174	169	435	1.826	12	2	Principal Arterial	3400	65
1175	434	1065	1.297	12	2	Principal Arterial	3400	55
1176	274	1066	0.327	12	2	Minor Arterial	2800	55
1177	432	437	0.369	11	1	Major Arterial	1400	25
1178	221	441	0.799	12	1	Major Arterial	1400	45
1179	883	885	0.342	12	1	Collector / Local Road	1300	45
1180	879	883	1.651	12	1	Collector / Local Road	1300	45
1181	407	1067	0.21	12	2	Minor Arterial	2800	40
1182	352	1033	0.486	11	2	Minor Arterial	2800	35
1183	331	875	0.841	12	1	Collector / Local Road	1300	40
1184	872	905	1.92	12	1	Collector / Local Road	1300	40
1185	899	905	0.883	12	1	Collector / Local Road	1300	40
1186	935	1070	0.648	12	2	Collector / Local Road	2600	40
1187	355	356	1.01	12	1	Minor Arterial	1400	40
1188	357	358	0.441	12	2	Minor Arterial	2800	40
1189	330	627	0.767	12	2	Principal Arterial	3600	45
1190	227	334	1.234	12	2	Principal Arterial	3400	55
1191	213	341	0.885	12	1	Principal Arterial	1700	45
1192	967	996	0.549	12	1	Collector / Local Road	1300	40
1193	337	983	1.022	10	1	Collector / Local Road	1300	35
1194	451	983	0.305	10	1	Collector / Local Road	1300	25
1195	472	961	0.53	12	2	Minor Arterial	2800	40
1196	474	475	3.392	12	1	Major Arterial	1400	45

Link #	U-Node	D-Node	Length (mi)	Lane Width (ft)	Number of Lanes	Roadway Type	Saturation Flow Rate (veh/hr)	FFS (mph)
1197	223	475	1.258	12	1	Major Arterial	1400	45
1198	223	457	4.489	12	1	Major Arterial	1400	45
1199	457	1151	1.501	12	1	Major Arterial	1400	45
1200	346	1076	3.469	12	2	Principal Arterial	3400	55
1201	178	183	0.206	12	2	Principal Arterial	3400	50
1202	363	365	0.382	12	2	Principal Arterial	3400	50
1203	210	1077	1.178	12	1	Major Arterial	1400	45
1204	449	1009	2.103	12	1	Major Arterial	1400	55
1205	449	456	0.104	12	1	Major Arterial	1400	55
1206	456	457	6.056	12	1	Major Arterial	1400	45
1207	457	1037	3.916	12	1	Major Arterial	1400	45
1208	139	428	1.898	12	2	Principal Arterial	3600	65
1209	71	88	0.615	12	2	Freeway	4000	70
1210	42	1036	0.393	12	2	Freeway	4000	70
1211	39	42	3.039	12	2	Freeway	4000	70
1212	89	92	0.499	12	2	Major Arterial	2800	45
1213	91	279	0.379	12	2	Major Arterial	2800	45
1214	94	98	0.307	12	2	Major Arterial	2800	45
1215	98	105	0.458	12	2	Major Arterial	2800	45
1216	531	999	1.738	12	2	Principal Arterial	3400	60
1217	530	532	1.74	12	2	Principal Arterial	3400	60
1218	24	150	1.873	12	2	Principal Arterial	3600	60
1219	565	567	0.677	12	2	Freeway	3800	60
1220	129	508	0.8	12	2	Freeway	3800	60
1221	127	1000	0.612	12	2	Principal Arterial	3400	50
1222	119	1000	0.196	12	2	Principal Arterial	3400	45
1223	249	594	0.783	12	2	Principal Arterial	3400	55
1224	597	719	0.308	12	2	Principal Arterial	3400	45
1225	583	585	1.006	12	2	Principal Arterial	3400	60
1226	231	583	1.028	12	2	Principal Arterial	3400	60
1227	230	685	1.221	12	2	Principal Arterial	3400	60
1228	688	1092	0.259	12	2	Principal Arterial	3400	55
1229	688	698	0.748	12	2	Principal Arterial	3400	55
1230	1093	1094	0.941	12	2	Principal Arterial	3400	55
1231	265	1095	1.435	12	2	Principal Arterial	3400	55
1232	569	1002	0.572	12	2	Freeway	3800	50
1233	567	1001	0.537	12	2	Freeway	3800	50
1234	548	727	1.016	11	1	Minor Arterial	1400	35
1235	545	1140	0.952	12	1	Minor Arterial	1400	40
1236	542	759	1.064	12	1	Minor Arterial	1400	55
1237	538	539	0.498	12	1	Minor Arterial	1400	45
1238	536	537	0.338	12	1	Minor Arterial	1400	45
1239	782	783	0.145	11	1	Minor Arterial	1400	35
1240	783	792	0.363	11	1	Minor Arterial	1400	35
1241	132	792	0.502	11	1	Minor Arterial	1400	35
1242	133	1097	3.06	12	1	Minor Arterial	1400	45
1243	507	1098	4.599	12	1	Minor Arterial	1400	55
1244	84	524	2.812	12	1	Major Arterial	1400	45
1245	129	524	2.588	12	1	Major Arterial	1400	45
1246	74	510	3.014	12	1	Major Arterial	1400	45
1247	235	510	1.011	12	1	Major Arterial	1400	45
1248	235	511	1.999	12	1	Major Arterial	1400	45
1249	511	512	2.232	12	1	Major Arterial	1400	45
1250	529	824	1.029	12	1	Major Arterial	1400	45
1251	514	516	0.522	12	1	Major Arterial	1400	45
1252	514	517	5.633	12	1	Major Arterial	1400	55
1253	73	642	0.937	12	1	Major Arterial	1400	55

Link #	U-Node	D-Node	Length (mi)	Lane Width (ft)	Number of Lanes	Roadway Type	Saturation Flow Rate (veh/hr)	FFS (mph)
1254	84	518	2.504	12	1	Major Arterial	1400	55
1255	518	1100	1.762	12	1	Major Arterial	1400	55
1256	511	629	1.25	12	1	Minor Arterial	1400	40
1257	278	1101	4.018	12	1	Collector / Local Road	1300	40
1258	66	235	1.739	12	1	Minor Arterial	1400	40
1259	631	1103	0.083	11	1	Minor Arterial	1400	25
1260	528	1034	5.171	12	1	Minor Arterial	1400	40
1261	250	574	2.015	12	1	Major Arterial	1400	55
1262	576	577	1.095	12	1	Major Arterial	1400	45
1263	236	608	1.223	12	1	Major Arterial	1400	55
1264	625	1104	0.622	12	1	Major Arterial	1400	50
1265	611	625	0.566	12	1	Major Arterial	1400	45
1266	613	1105	3.47	12	1	Major Arterial	1400	55
1267	61	1105	0.376	12	1	Major Arterial	1400	45
1268	273	501	4.74	12	1	Major Arterial	1400	45
1269	273	454	2.777	12	1	Major Arterial	1400	45
1270	74	519	4.567	12	1	Minor Arterial	1400	40
1271	578	579	0.371	11	1	Minor Arterial	1400	30
1272	101	604	0.664	11	1	Minor Arterial	1400	25
1273	592	593	0.33	11	1	Major Arterial	1400	30
1274	606	607	0.581	12	1	Minor Arterial	1400	40
1275	591	1107	0.332	12	1	Major Arterial	1400	40
1276	589	590	0.546	12	1	Major Arterial	1400	40
1277	103	526	0.803	12	1	Minor Arterial	1400	40
1278	525	708	2.246	12	1	Minor Arterial	1400	40
1279	524	708	2.032	12	1	Minor Arterial	1400	40
1280	270	286	0.856	12	2	Principal Arterial	3400	65
1281	459	462	0.423	12	1	Major Arterial	1400	45
1282	286	493	2.181	12	2	Principal Arterial	3400	65
1283	75	492	1.419	12	2	Principal Arterial	3400	45
1284	14	515	0.296	12	1	Major Arterial	1400	45
1285	422	425	2.485	12	1	Minor Arterial	1300	45
1286	382	384	3.417	12	1	Minor Arterial	1300	45
1287	461	462	3.858	12	2	Major Arterial	2800	45
1288	77	494	0.482	12	2	Principal Arterial	3400	55
1289	76	266	4.085	12	1	Major Arterial	1400	45
1290	669	725	2.843	10	1	Collector / Local Road	1300	25
1291	629	631	4.756	12	1	Minor Arterial	1400	40
1292	517	642	2.744	12	1	Major Arterial	1400	55
1293	652	748	4.423	11	1	Minor Arterial	1300	35
1294	505	748	1.714	12	1	Minor Arterial	1300	45
1295	519	603	1.81	12	1	Minor Arterial	1400	40
1296	577	603	0.949	12	2	Major Arterial	2800	45
1297	679	1035	0.506	10	1	Collector / Local Road	1300	25
1298	742	743	0.274	10	1	Collector / Local Road	1300	25
1299	739	743	0.233	10	1	Collector / Local Road	1300	30
1300	746	1113	0.538	10	1	Collector / Local Road	1300	25
1301	597	1114	0.529	10	1	Collector / Local Road	1300	25
1302	746	747	0.742	10	1	Collector / Local Road	1300	25
1303	129	509	3.198	12	1	Major Arterial	1400	45
1304	758	1002	1.251	10	1	Collector / Local Road	1300	25
1305	520	603	1.067	12	1	Minor Arterial	1400	40
1306	603	1080	0.539	12	2	Major Arterial	2800	45
1307	94	695	0.482	10	1	Collector / Local Road	1300	30
1308	1115	1116	0.372	10	1	Collector / Local Road	1300	25
1309	749	755	0.134	12	1	Collector / Local Road	1300	45
1310	751	761	1.696	12	1	Collector / Local Road	1300	45

Link #	U-Node	D-Node	Length (mi)	Lane Width (ft)	Number of Lanes	Roadway Type	Saturation Flow Rate (veh/hr)	FFS (mph)
1311	684	1118	0.613	10	1	Collector / Local Road	1300	25
1312	601	602	1.002	12	1	Collector / Local Road	1300	50
1313	234	681	1	12	1	Collector / Local Road	1300	45
1314	618	659	1.233	12	1	Minor Arterial	1300	45
1315	600	658	0.894	10	1	Collector / Local Road	1300	25
1316	1120	1121	0.263	10	1	Collector / Local Road	1300	25
1317	621	1120	1.297	10	1	Collector / Local Road	1300	25
1318	70	241	1.592	10	1	Collector / Local Road	1300	25
1319	640	645	2.512	10	1	Collector / Local Road	1300	25
1320	724	727	1.505	12	1	Collector / Local Road	1300	45
1321	1122	1123	0.386	10	1	Collector / Local Road	1300	25
1322	718	1122	1.124	10	1	Collector / Local Road	1300	25
1323	237	825	2.25	12	1	Collector / Local Road	1300	45
1324	248	998	3.056	12	2	Principal Arterial	3400	65
1325	25	314	0.382	12	2	Freeway	3800	60
1326	320	498	1.498	12	1	Major Arterial	1400	45
1327	133	530	1.005	12	2	Principal Arterial	3400	60
1328	51	747	0.249	10	1	Collector / Local Road	1300	25
1329	136	1047	7.107	12	1	Principal Arterial	1700	55
1330	391	392	0.876	12	1	Major Arterial	1600	50
1331	188	199	1.622	12	1	Principal Arterial	1700	55
1332	189	942	3.442	12	1	Principal Arterial	1700	55
1333	384	1010	1.917	10	1	Collector / Local Road	1300	25
1334	953	964	0.761	12	1	Collector / Local Road	1300	40
1335	915	953	2.124	12	1	Collector / Local Road	1300	45
1336	144	1043	0.188	12	2	Principal Arterial	3600	65
1337	256	839	0.929	10	1	Collector / Local Road	1300	30
1338	440	922	1.169	12	1	Collector / Local Road	1300	45
1339	942	1040	0.84	12	1	Principal Arterial	1700	55
1340	351	1039	3.769	12	1	Principal Arterial	1700	45
1341	228	971	2.436	12	1	Collector / Local Road	1300	40
1342	473	474	2.323	12	1	Minor Arterial	1400	40
1343	473	1075	0.464	12	1	Minor Arterial	1400	40
1344	172	899	2.641	12	2	Principal Arterial	3400	40
1345	30	171	1.049	12	2	Principal Arterial	3400	45
1346	960	1131	0.699	10	1	Collector / Local Road	1300	25
1347	961	1075	0.589	12	2	Minor Arterial	2800	40
1348	409	910	0.267	10	1	Collector / Local Road	1300	25
1349	927	1132	0.666	12	1	Minor Arterial	1300	40
1350	898	1133	0.469	10	1	Collector / Local Road	1300	25
1351	369	849	0.407	12	1	Collector / Local Road	1300	40
1352	859	860	0.831	10	1	Collector / Local Road	1300	25
1353	431	1050	1.363	12	2	Principal Arterial	3600	55
1354	15	992	2.844	12	2	Principal Arterial	3600	65
1355	873	1059	0.223	10	1	Collector / Local Road	1300	25
1356	467	470	0.296	12	2	Principal Arterial	3400	45
1357	226	491	4.459	12	2	Principal Arterial	3400	55
1358	258	447	4.152	12	1	Minor Arterial	1300	45
1359	208	984	2.231	12	1	Major Arterial	1400	45
1360	142	1134	0.532	12	2	Principal Arterial	3600	65
1361	401	1134	1.638	12	1	Major Arterial	1400	45
1362	220	371	0.713	12	2	Major Arterial	3200	40
1363	446	976	3.756	10	1	Collector / Local Road	1300	25
1364	50	1087	0.356	12	1	Principal Arterial	1700	55
1365	422	1138	2.533	10	1	Collector / Local Road	1300	25
1366	872	905	1.92	12	1	Collector / Local Road	1300	40
1367	899	905	0.883	12	1	Collector / Local Road	1300	40

Link #	U-Node	D-Node	Length (mi)	Lane Width (ft)	Number of Lanes	Roadway Type	Saturation Flow Rate (veh/hr)	FFS (mph)
1368	936	1070	0.645	12	2	Freeway	0	0
1369	935	1070	0.648	12	2	Collector / Local Road	2600	40
1370	355	356	1.01	12	1	Minor Arterial	1400	40
1371	357	358	0.441	12	2	Minor Arterial	2800	40
1372	330	626	0.657	12	2	Freeway	0	0
1373	330	627	0.767	12	2	Principal Arterial	3600	45
1374	226	333	1.236	12	2	Freeway	0	0
1375	227	334	1.234	12	2	Principal Arterial	3400	55
1376	212	342	0.882	12	1	Freeway	0	0
1377	213	341	0.885	12	1	Principal Arterial	1700	45
1378	967	996	0.549	12	1	Collector / Local Road	1300	40
1379	337	983	1.022	10	1	Collector / Local Road	1300	35
1380	451	983	0.305	10	1	Collector / Local Road	1300	25
1381	472	961	0.53	12	2	Minor Arterial	2800	40
1382	474	475	3.392	12	1	Major Arterial	1400	45
1383	223	475	1.258	12	1	Major Arterial	1400	45
1384	223	457	4.489	12	1	Major Arterial	1400	45
1385	457	1151	1.501	12	1	Major Arterial	1400	45
1386	346	1076	3.469	12	2	Principal Arterial	3400	55
1387	178	183	0.206	12	2	Principal Arterial	3400	50
1388	177	181	0.205	12	2	Freeway	0	0
1389	363	365	0.382	12	2	Principal Arterial	3400	50
1390	210	1077	1.178	12	1	Major Arterial	1400	45
1391	449	1009	2.103	12	1	Major Arterial	1400	55
1392	449	456	0.104	12	1	Major Arterial	1400	55
1393	456	457	6.056	12	1	Major Arterial	1400	45
1394	457	1037	3.916	12	1	Major Arterial	1400	45
1395	139	428	1.898	12	2	Principal Arterial	3600	65
1396	71	88	0.615	12	2	Freeway	4000	70
1397	42	1036	0.393	12	2	Freeway	4000	70
1398	39	42	3.039	12	2	Freeway	4000	70
1399	41	87	0.499	12	2	Freeway	0	0
1400	306	317	0.418	12	2	Freeway	0	0
1401	298	312	0.331	12	2	Freeway	0	0
1402	89	92	0.499	12	2	Major Arterial	2800	45
1403	91	279	0.379	12	2	Major Arterial	2800	45
1404	94	1081	0.811	12	2	Freeway	0	0
1405	91	1083	0.82	12	2	Freeway	0	0
1406	94	98	0.307	12	2	Major Arterial	2800	45
1407	98	105	0.458	12	2	Major Arterial	2800	45
1408	99	106	0.455	12	2	Freeway	0	0
1409	531	999	1.738	12	2	Principal Arterial	3400	60
1410	530	532	1.74	12	2	Principal Arterial	3400	60
1411	237	247	0.541	12	2	Freeway	0	0
1412	23	283	1.878	12	2	Freeway	0	0
1413	152	1086	0.223	12	2	Freeway	0	0
1414	1087	1088	0.242	12	1	Freeway	0	0
1415	24	150	1.873	12	2	Principal Arterial	3600	60
1416	568	1002	0.533	12	2	Freeway	0	0
1417	565	567	0.677	12	2	Freeway	3800	60
1418	566	568	0.672	12	2	Freeway	0	0
1419	129	508	0.8	12	2	Freeway	3800	60
1420	127	1000	0.612	12	2	Principal Arterial	3400	50
1421	119	1000	0.196	12	2	Principal Arterial	3400	45
1422	249	594	0.783	12	2	Principal Arterial	3400	55
1423	597	719	0.308	12	2	Principal Arterial	3400	45
1424	583	585	1.006	12	2	Principal Arterial	3400	60

Link #	U-Node	D-Node	Length (mi)	Lane Width (ft)	Number of Lanes	Roadway Type	Saturation Flow Rate (veh/hr)	FFS (mph)
1425	231	583	1.028	12	2	Principal Arterial	3400	60
1426	230	685	1.221	12	2	Principal Arterial	3400	60
1427	688	1092	0.259	12	2	Principal Arterial	3400	55
1428	688	698	0.748	12	2	Principal Arterial	3400	55
1429	1093	1094	0.941	12	2	Principal Arterial	3400	55
1430	265	1095	1.435	12	2	Principal Arterial	3400	55
1431	1029	1095	0.598	12	2	Freeway	0	0
1432	569	1001	0.398	12	2	Freeway	0	0
1433	569	1002	0.572	12	2	Freeway	3800	50
1434	567	1001	0.537	12	2	Freeway	3800	50
1435	548	727	1.016	11	1	Minor Arterial	1400	35
1436	545	1140	0.952	12	1	Minor Arterial	1400	40
1437	542	759	1.064	12	1	Minor Arterial	1400	55
1438	538	539	0.498	12	1	Minor Arterial	1400	45
1439	536	537	0.338	12	1	Minor Arterial	1400	45
1440	782	783	0.145	11	1	Minor Arterial	1400	35
1441	783	792	0.363	11	1	Minor Arterial	1400	35
1442	132	792	0.502	11	1	Minor Arterial	1400	35
1443	133	1097	3.06	12	1	Minor Arterial	1400	45
1444	507	1098	4.599	12	1	Minor Arterial	1400	55
1445	84	524	2.812	12	1	Major Arterial	1400	45
1446	129	524	2.588	12	1	Major Arterial	1400	45
1447	74	510	3.014	12	1	Major Arterial	1400	45
1448	235	510	1.011	12	1	Major Arterial	1400	45
1449	235	511	1.999	12	1	Major Arterial	1400	45
1450	511	512	2.232	12	1	Major Arterial	1400	45
1451	529	824	1.029	12	1	Major Arterial	1400	45
1452	514	516	0.522	12	1	Major Arterial	1400	45
1453	514	517	5.633	12	1	Major Arterial	1400	55
1454	73	642	0.937	12	1	Major Arterial	1400	55
1455	84	518	2.504	12	1	Major Arterial	1400	55
1456	518	1100	1.762	12	1	Major Arterial	1400	55
1457	511	629	1.25	12	1	Minor Arterial	1400	40
1458	278	1101	4.018	12	1	Collector / Local Road	1300	40
1459	66	235	1.739	12	1	Minor Arterial	1400	40
1460	631	1103	0.083	11	1	Minor Arterial	1400	25
1461	528	1034	5.171	12	1	Minor Arterial	1400	40
1462	250	574	2.015	12	1	Major Arterial	1400	55
1463	576	577	1.095	12	1	Major Arterial	1400	45
1464	236	608	1.223	12	1	Major Arterial	1400	55
1465	625	1104	0.622	12	1	Major Arterial	1400	50
1466	611	625	0.566	12	1	Major Arterial	1400	45
1467	613	1105	3.47	12	1	Major Arterial	1400	55
1468	61	1105	0.376	12	1	Major Arterial	1400	45
1469	273	501	4.74	12	1	Major Arterial	1400	45
1470	273	454	2.777	12	1	Major Arterial	1400	45
1471	74	519	4.567	12	1	Minor Arterial	1400	40
1472	578	579	0.371	11	1	Minor Arterial	1400	30
1473	101	604	0.664	11	1	Minor Arterial	1400	25
1474	592	593	0.33	11	1	Major Arterial	1400	30
1475	606	607	0.581	12	1	Minor Arterial	1400	40
1476	591	1107	0.332	12	1	Major Arterial	1400	40
1477	589	590	0.546	12	1	Major Arterial	1400	40
1478	103	526	0.803	12	1	Minor Arterial	1400	40
1479	525	708	2.246	12	1	Minor Arterial	1400	40
1480	524	708	2.032	12	1	Minor Arterial	1400	40
1481	270	286	0.856	12	2	Principal Arterial	3400	65



Link #	U-Node	D-Node	Length (mi)	Lane Width (ft)	Number of Lanes	Roadway Type	Saturation Flow Rate (veh/hr)	FFS (mph)
1482	459	462	0.423	12	1	Major Arterial	1400	45
1483	286	493	2.181	12	2	Principal Arterial	3400	65
1484	267	492	2.183	12	2	Freeway	0	0
1485	75	492	1.419	12	2	Principal Arterial	3400	45
1486	60	493	1.414	12	2	Freeway	0	0
1487	14	515	0.296	12	1	Major Arterial	1400	45
1488	422	425	2.485	12	1	Minor Arterial	1300	45
1489	382	384	3.417	12	1	Minor Arterial	1300	45
1490	461	462	3.858	12	2	Major Arterial	2800	45
1491	81	495	0.486	12	2	Freeway	0	0
1492	77	494	0.482	12	2	Principal Arterial	3400	55
1493	76	266	4.085	12	1	Major Arterial	1400	45
1494	669	725	2.843	10	1	Collector / Local Road	1300	25
1495	629	631	4.756	12	1	Minor Arterial	1400	40
1496	517	642	2.744	12	1	Major Arterial	1400	55
1497	652	748	4.423	11	1	Minor Arterial	1300	35
1498	505	748	1.714	12	1	Minor Arterial	1300	45
1499	519	603	1.81	12	1	Minor Arterial	1400	40
1500	577	603	0.949	12	2	Major Arterial	2800	45
1501	679	1035	0.506	10	1	Collector / Local Road	1300	25
1502	742	743	0.274	10	1	Collector / Local Road	1300	25
1503	739	743	0.233	10	1	Collector / Local Road	1300	30
1504	746	1113	0.538	10	1	Collector / Local Road	1300	25
1505	597	1114	0.529	10	1	Collector / Local Road	1300	25
1506	746	747	0.742	10	1	Collector / Local Road	1300	25
1507	129	509	3.198	12	1	Major Arterial	1400	45
1508	758	1002	1.251	10	1	Collector / Local Road	1300	25
1509	520	603	1.067	12	1	Minor Arterial	1400	40
1510	603	1080	0.539	12	2	Major Arterial	2800	45
1511	94	695	0.482	10	1	Collector / Local Road	1300	30
1512	1115	1116	0.372	10	1	Collector / Local Road	1300	25
1513	749	755	0.134	12	1	Collector / Local Road	1300	45
1514	751	761	1.696	12	1	Collector / Local Road	1300	45
1515	684	1118	0.613	10	1	Collector / Local Road	1300	25
1516	601	602	1.002	12	1	Collector / Local Road	1300	50
1517	234	681	1	12	1	Collector / Local Road	1300	45
1518	618	659	1.233	12	1	Minor Arterial	1300	45
1519	600	658	0.894	10	1	Collector / Local Road	1300	25
1520	1120	1121	0.263	10	1	Collector / Local Road	1300	25
1521	621	1120	1.297	10	1	Collector / Local Road	1300	25
1522	70	241	1.592	10	1	Collector / Local Road	1300	25
1523	640	645	2.512	10	1	Collector / Local Road	1300	25
1524	724	727	1.505	12	1	Collector / Local Road	1300	45
1525	1122	1123	0.386	10	1	Collector / Local Road	1300	25
1526	718	1122	1.124	10	1	Collector / Local Road	1300	25
1527	237	825	2.25	12	1	Collector / Local Road	1300	45
1528	248	998	3.056	12	2	Principal Arterial	3400	65
1529	247	997	3.06	12	2	Freeway	0	0
1530	25	314	0.382	12	2	Freeway	3800	60
1531	26	307	0.478	12	2	Freeway	0	0
1532	320	498	1.498	12	1	Major Arterial	1400	45
1533	132	999	1.005	12	2	Freeway	0	0
1534	133	530	1.005	12	2	Principal Arterial	3400	60
1535	51	747	0.249	10	1	Collector / Local Road	1300	25
1536	136	1047	7.107	12	1	Principal Arterial	1700	55
1537	391	392	0.876	12	1	Major Arterial	1600	50
1538	188	199	1.622	12	1	Principal Arterial	1700	55

Link #	U-Node	D-Node	Length (mi)	Lane Width (ft)	Number of Lanes	Roadway Type	Saturation Flow Rate (veh/hr)	FFS (mph)
1539	189	942	3.442	12	1	Principal Arterial	1700	55
1540	384	1010	1.917	10	1	Collector / Local Road	1300	25
1541	953	964	0.761	12	1	Collector / Local Road	1300	40
1542	915	953	2.124	12	1	Collector / Local Road	1300	45
1543	144	1043	0.188	12	2	Principal Arterial	3600	65
1544	145	1014	0.187	12	2	Freeway	0	0
1545	256	839	0.929	10	1	Collector / Local Road	1300	30
1546	440	922	1.169	12	1	Collector / Local Road	1300	45
1547	942	1040	0.84	12	1	Principal Arterial	1700	55
1548	351	1039	3.769	12	1	Principal Arterial	1700	45
1549	228	971	2.436	12	1	Collector / Local Road	1300	40
1550	473	474	2.323	12	1	Minor Arterial	1400	40
1551	473	1075	0.464	12	1	Minor Arterial	1400	40
1552	172	899	2.641	12	2	Principal Arterial	3400	40
1553	30	171	1.049	12	2	Principal Arterial	3400	45
1554	31	171	1.033	12	2	Freeway	0	0
1555	960	1131	0.699	10	1	Collector / Local Road	1300	25
1556	961	1075	0.589	12	2	Minor Arterial	2800	40
1557	409	910	0.267	10	1	Collector / Local Road	1300	25
1558	927	1132	0.666	12	1	Minor Arterial	1300	40
1559	898	1133	0.469	10	1	Collector / Local Road	1300	25
1560	369	849	0.407	12	1	Collector / Local Road	1300	40
1561	859	860	0.831	10	1	Collector / Local Road	1300	25
1562	431	1050	1.363	12	2	Principal Arterial	3600	55
1563	430	1051	1.361	12	2	Freeway	0	0
1564	16	993	2.843	12	2	Freeway	0	0
1565	15	992	2.844	12	2	Principal Arterial	3600	65
1566	873	1059	0.223	10	1	Collector / Local Road	1300	25
1567	467	470	0.296	12	2	Principal Arterial	3400	45
1568	465	469	0.297	12	2	Freeway	0	0
1569	226	491	4.459	12	2	Principal Arterial	3400	55
1570	227	335	4.452	12	2	Freeway	0	0
1571	258	447	4.152	12	1	Minor Arterial	1300	45
1572	208	984	2.231	12	1	Major Arterial	1400	45
1573	142	1134	0.532	12	2	Principal Arterial	3600	65
1574	401	1134	1.638	12	1	Major Arterial	1400	45
1575	220	371	0.713	12	2	Major Arterial	3200	40
1576	446	976	3.756	10	1	Collector / Local Road	1300	25
1577	50	1087	0.356	12	1	Principal Arterial	1700	55
1578	422	1138	2.533	10	1	Collector / Local Road	1300	25



## Appendix E

Telephone Survey of EPZ Residents  
(Results Summary and Survey  
Instrument)

**Browns Ferry EPZ**

**Summary of Telephone Survey Results**

**Completed Surveys**                      380

**Results**

<b>HH occupants</b>	2.86	per HH
	11%	fraction single occupant
<b>Vehicles</b>	20%	one vehicle
	37%	2 vehicles
	43%	3 or more

<b>Age Mix of Respondents (%)</b>	
18 to 24	9
25 to 34	11.1
35 to 44	19.8
45 to 54	17.7
55 to 64	24.9
65 to 74	9.5
75 plus	7.9
<b>Total</b>	<b>100</b>

<b>School Age Children</b>	72%	none		
<b>(% of HHs)</b>	28%	at least one	14%	One
			14%	2 or more

**Commuter Data**

(% of HHs)

<b>Number of Commuters / HH</b>	One	32.4%
	Two or more	32.9%
<b>Of those HHs commuting:</b>		
Work outside of EPZ		40%
Take vehicle to work		96%
Would evacuate direct from work		43%
Would return home to evacuate		57%

**Number of Vehicles to Evacuate**

<b>Night/Weekend</b>	1.39	veh per HH
<b>Weekday</b>	1.31	veh per HH

**Time Distribution**

	<b>0 to 15</b> minutes	<b>15 to 30</b> minutes	<b>30 to 45</b> mintues	<b>45 to 60</b> minutes	<b>&gt; 60</b> minutes
leave work after notice	86.2%	9.7%	1.0%	1.3%	1.8%
travel home	53.7%	30.7%	11.9%	2.0%	1.6%
depart after return home	46.9%	34.5%	6.2%	7.2%	5.2%
depart (all at home)	33.3%	35.3%	9.6%	11.0%	10.7%

ARCADIS  
TVA Survey  
Draft v4 – May 15, 2012

---

INTRODUCTION

---

*Hello, my name is \_\_\_\_\_ and I am calling from MDC Research, a company hired on behalf of the Tennessee Valley Authority (TVA) and its local, state and federal emergency planning partners. We are conducting a brief survey to gather information from households in your area about nuclear power emergency response planning and we'd like to include your opinions. This survey is being conducted on behalf of the (insert facility name) Nuclear Facility, and will take approximately 5 minutes to complete. We are not trying to sell you anything. The information gathered from this survey will help local agencies more effectively provide community assistance should an emergency situation arise.*

*Can I please speak with an adult member of the household?*

---

SCREENER

---

S1. What is the zip code of your primary residence? Your primary residence is the home where you live the majority of the time. **DO NOT READ ZIP CODE LIST**

List of appropriate zip codes will be displayed here  
99999 Location outside the EPZ – **THANK & TERMINATE**

S2. Are you over 17 years of age?

11 **NO – ASK FOR REFERRAL or THANK & TERMINATE**  
12 **YES**  
98 **(DO NOT READ) Refused THANK & TERMINATE**

S3. Is your residence located within a 10 mile radius of (insert the name of the nuclear power plant)?

1 Yes  
2 No  
7 Don't know  
If answer is No, **THANK & TERMINATE**

---

QUESTIONNAIRE

---

Q1 How many people usually reside in your household?

Record: \_\_\_\_\_ # of residents  
998 **(DO NOT READ) Refused – THANK & TERMINATE**

Q2 How many working motor vehicles are normally based at your home?

Record: \_\_\_\_\_ # of vehicles

997 None – **THANK AND TERMINATE**

998 **(DO NOT READ)** Refused

Q3 How many children in your household attend local schools in grade K – 12?

Record \_\_\_\_\_

997 None

998 **(DO NOT READ)** Refused

Q4 Do you commute to a job or to a college at least 4 times week?

1 Yes

2 No

998 **(DO NOT READ)** Refused

**If refused, explain;** The nature of this project is to estimate traffic volumes and flow in the event of a nuclear plant emergency evacuation, so this data is necessary in order for us to continue with the survey.

If still refused - **THANK & TERMINATE**

If No, skip to Q7.

Q5. Is your job or college located within a 10 mile radius of (insert the name of the nuclear power plant)?

1 Yes

2 No

7 Don't know

Q6A Do you work a regular Monday thru Friday, 8:00 to 5:00 type of schedule, or some other type of schedule?

1 Monday – Friday, 8:00am to 5:00pm

2 Other schedule

7 **(DO NOT READ)** Don't know

Q6B Do you generally use a personal vehicle to commute back and forth to work?

1 Yes

2 No

7 **(DO NOT READ)** Don't know

Q6C If an evacuation notice were given while you were at work, do you think you would most likely...

- 1 Evacuate directly from work
- 2 Come home first and then evacuate, or
- 7 **(DO NOT READ)** Don't know

Q6D How long do you think it would take you to get prepared and actually leave work?  
**(Read only if necessary, categorize response as follows)**

- 11 5 minutes or less
- 12 6 – 10 minutes
- 13 11 – 15 minutes
- 14 16 – 20 minutes
- 15 21 – 25 minutes
- 16 26 – 30 minutes
- 17 31 – 35 minutes
- 18 36 – 40 minutes
- 19 41 – 45 minutes
- 20 46 – 50 minutes
- 21 51 – 55 minutes
- 22 56 minutes to an hour
- 23 Between an hour and an hour 15 minutes
- 24 Between 1 hour 16 minutes and 1 hour 30 minutes
- 25 Between 1 hour 31 minutes and 1 hour 45 minutes
- 26 Between 1 hour 46 minutes and 2 hours
- 27 More than 2 hours
- 97 **(DO NOT READ)** Don't know

Q6E **(ONLY ASK IF Q6C=2 or 7)** About how long does it take you to get from work to home? **(Read only if necessary, categorize response as follows)**

- 11 5 minutes or less
- 12 6 – 10 minutes
- 13 11 – 15 minutes
- 14 16 – 20 minutes
- 15 21 – 25 minutes
- 16 26 – 30 minutes
- 17 31 – 35 minutes
- 18 36 – 40 minutes
- 19 41 – 45 minutes
- 20 46 – 50 minutes
- 21 51 – 55 minutes
- 22 56 minutes to an hour
- 23 Between an hour and an hour 15 minutes

- 24 Between 1 hour 16 minutes and 1 hour 30 minutes
- 25 Between 1 hour 31 minutes and 1 hour 45 minutes
- 26 Between 1 hour 46 minutes and 2 hours
- 27 More than 2 hours
- 97 **(DO NOT READ)** Don't know

Q7 How many other adults in your household commute to a job or a college at least 4 times week?

Record \_\_\_\_\_

- 997 None
- 998 **(DO NOT READ)** Refused

**If refused, explain;** The nature of this project is to estimate traffic volumes and flow in the event of a nuclear plant emergency evacuation, so this data is necessary in order for us to continue with the survey.

If still refused - **THANK & TERMINATE**

If none, skip to Q10.

**Repeat the following Q7A-F sequence for each working adult cited in Q7**

For each of the commuting adults you just referenced, I'd like to ask a few questions related to what their likely actions would be in the case of a nuclear plant emergency evacuation. I understand that I will be asking you to speculate on what other members of the household may do in this situation, but your best guesses are just fine for our purposes. Please answer the questions for each commuting adult in whatever order you like.

Q7A. Is this person's job or college located within a 10 mile radius of (insert the name of the nuclear power plant)?

- 1 Yes
- 2 No
- 7 Don't know

Q7B Does this person work a regular Monday thru Friday, 8:00 to 5:00 type of schedule, or some other type of schedule?

- 1 Monday – Friday, 8:00am to 5:00pm
- 2 Other schedule
- 7 **(DO NOT READ)** Don't know

Q7C Does this person generally use a personal vehicle to commute back and forth to work?

- 1 Yes
- 2 No
- 7 **(DO NOT READ)** Don't know



Q7D If an evacuation notice were given while this person was at work, do you think they would most likely...

- 1 Evacuate directly from work
- 2 Come home first and then evacuate, or
- 7 **(DO NOT READ)** Don't know

Q7E How long do you think it would take this person to get prepared and actually leave work?  
**(Read only if necessary, categorize response as follows)**

- 11 5 minutes or less
- 12 6 – 10 minutes
- 13 11 – 15 minutes
- 14 16 – 20 minutes
- 15 21 – 25 minutes
- 16 26 – 30 minutes
- 17 31 – 35 minutes
- 18 36 – 40 minutes
- 19 41 – 45 minutes
- 20 46 – 50 minutes
- 21 51 – 55 minutes
- 22 56 minutes to an hour
- 23 Between an hour and an hour 15 minutes
- 24 Between 1 hour 16 minutes and 1 hour 30 minutes
- 25 Between 1 hour 31 minutes and 1 hour 45 minutes
- 26 Between 1 hour 46 minutes and 2 hours
- 27 More than 2 hours
- 97 **(DO NOT READ)** Don't know

Q7F **(ONLY ASK IF Q7D=2 or 7)** About how long does it take this person to get from work to home? **(Read only if necessary, categorize response as follows)**

- 11 5 minutes or less
- 12 6 – 10 minutes
- 13 11 – 15 minutes
- 14 16 – 20 minutes
- 15 21 – 25 minutes
- 16 26 – 30 minutes
- 17 31 – 35 minutes
- 18 36 – 40 minutes
- 19 41 – 45 minutes
- 20 46 – 50 minutes
- 21 51 – 55 minutes
- 22 56 minutes to an hour
- 23 Between an hour and an hour 15 minutes

- 24 Between 1 hour 16 minutes and 1 hour 30 minutes
- 25 Between 1 hour 31 minutes and 1 hour 45 minutes
- 26 Between 1 hour 46 minutes and 2 hours
- 27 More than 2 hours
- 97 **(DO NOT READ)** Don't know

Q8A-F Repeat Q7 sequence for next commuter;

Q9A-F Repeat Q8 sequence for next commuter.

Q10 In the event of an emergency at the nuclear power plant, when the commuters are away from home is there a working vehicle for the family members at home that could be used for evacuation?

- 1 Yes
- 2 No → Skip to Q12
- 7 **(DO NOT READ)** Don't know

Q11 In the event of an emergency would the family members at home await the return of the other family members before evacuating the area?

- 1 Yes
- 2 No
- 7 **(DO NOT READ)** Don't know

**SKIP TO Q 13**

Q12 In the event of an emergency would the family members at home wait for a ride from one of the commuters or leave with someone else?

- 1 They would wait for a ride
- 2 They would leave with someone else
- 7 **(DO NOT READ)** Don't know

Q13 And once everyone who is coming home from work or school has arrived, how long would it take to prepare and depart from home, taking into consideration whether or not someone else is usually home who may be starting these preparation while they are traveling? Please consider tasks such as packing clothing, securing the house, loading the car(s), etc. **(Read only if necessary, categorize response as follows)**

- 11 5 minutes or less
- 12 6 – 10 minutes
- 13 11 – 15 minutes
- 14 16 – 20 minutes

- 15 21 – 25 minutes
- 16 26 – 30 minutes
- 17 31 – 35 minutes
- 18 36 – 40 minutes
- 19 41 – 45 minutes
- 20 46 – 50 minutes
- 21 51 – 55 minutes
- 22 56 minutes to an hour
- 23 Between an hour and an hour 15 minutes
- 24 Between 1 hour 16 minutes and 1 hour 30 minutes
- 25 Between 1 hour 31 minutes and 1 hour 45 minutes
- 26 Between 1 hour 46 minutes and 2 hours
- 27 More than 2 hours
- 97 **(DO NOT READ)** Don't know

Q14 If an evacuation were ordered when all household members were at home (for example, at night or on a weekend), approximately how long would it take your household to prepare to depart? Please assume that you are advised to plan to be away from your home for 3 days, again considering tasks such as packing clothing, securing the house, loading the car(s), etc. **(Read only if necessary, categorize response as follows)**

- 11 5 minutes or less
- 12 6 – 10 minutes
- 13 11 – 15 minutes
- 14 16 – 20 minutes
- 15 21 – 25 minutes
- 16 26 – 30 minutes
- 17 31 – 35 minutes
- 18 36 – 40 minutes
- 19 41 – 45 minutes
- 20 46 – 50 minutes
- 21 51 – 55 minutes
- 22 56 minutes to an hour
- 23 Between an hour and an hour 15 minutes
- 24 Between 1 hour 16 minutes and 1 hour 30 minutes
- 25 Between 1 hour 31 minutes and 1 hour 45 minutes
- 26 Between 1 hour 46 minutes and 2 hours
- 27 More than 2 hours
- 97 **(DO NOT READ)** Don't know

Q15 How many vehicles would your household take if an evacuation were ordered when all household members were at home?

Record: \_\_\_\_\_ # of vehicles  
98 **(DO NOT READ)** Refused

Q16. Which of the following categories best describes your age?

- 11 18 to 24
- 12 25 to 34
- 13 35 to 44
- 14 45 to 54
- 15 55 to 64
- 16 65 to 74
- 17 75 or older
- 98 **(DO NOT READ)** Refused

Q17 Do you or any member of your household hunt, fish, or visit parks that are within a 10 mile radius of the nuclear power plant?

- 1 Yes, Fishing GO TO QUESTION 18a
- 2 Yes, Hunting GO TO QUESTION 18b
- 3 Yes, Visiting Parks GO TO QUESTION 18c
- 4 No GO TO END OF SURVEY
- 7 **(DO NOT READ)** Don't know/Refused

Q17A How many people typically travel in the same vehicle for this purpose? **(If respondent has multiple responses in Q16, ask for number that best represents their most frequent scenario.)**

- 1 One
- 2 Two
- 3 Three
- 4 Four
- 5 Five or more

**If Q17 ≠ 1, SKIP TO QUESTION 18b**

Q18A In the event of an emergency at the nuclear plant if you hear a warning siren while fishing, how long would it take you to complete preparations to evacuate the area? (This would include preparations from the recreational area, returning home, and securing your house, etc.) **(Read only if necessary, categorize response as follows)**

**FISHING**

- 11 5 minutes or less
- 12 6 – 10 minutes
- 13 11 – 15 minutes
- 14 16 – 20 minutes
- 15 21 – 25 minutes
- 16 26 – 30 minutes
- 17 31 – 35 minutes
- 18 36 – 40 minutes
- 19 41 – 45 minutes
- 20 46 – 50 minutes
- 21 51 – 55 minutes
- 22 56 minutes to an hour
- 23 Between an hour and an hour 15 minutes
- 24 Between 1 hour 16 minutes and 1 hour 30 minutes
- 25 Between 1 hour 31 minutes and 1 hour 45 minutes
- 26 Between 1 hour 46 minutes and 2 hours
- 27 More than 2 hours
- 97 **(DO NOT READ)** Don't know

**If Q17 ≠ 2, SKIP TO QUESTION 18c**

**Q18B** In the event of an emergency at the nuclear plant if you hear a warning siren while hunting, how long would it take you to complete preparations to evacuate the area? (This would include preparations from the recreational area, returning home, and securing your house, etc.) **(Read only if necessary, categorize response as follows)**

**HUNTING**

- 11 5 minutes or less
- 12 6 – 10 minutes
- 13 11 – 15 minutes
- 14 16 – 20 minutes
- 15 21 – 25 minutes
- 16 26 – 30 minutes
- 17 31 – 35 minutes
- 18 36 – 40 minutes
- 19 41 – 45 minutes
- 20 46 – 50 minutes
- 21 51 – 55 minutes
- 22 56 minutes to an hour
- 23 Between an hour and an hour 15 minutes
- 24 Between 1 hour 16 minutes and 1 hour 30 minutes
- 25 Between 1 hour 31 minutes and 1 hour 45 minutes
- 26 Between 1 hour 46 minutes and 2 hours
- 27 More than 2 hours
- 97 **(DO NOT READ)** Don't know

**If Q17 ≠ 3, SKIP TO END OF SURVEY**

**Q18C** In the event of an emergency at the nuclear plant if you hear a warning siren while visiting parks, how long would it take you to complete preparations to evacuate the area? (This would include preparations from the recreational area, returning home, and securing your house, etc.) **(Read only if necessary, categorize response as follows)**

**PARK VISITS**

- 11 5 minutes or less
- 12 6 – 10 minutes
- 13 11 – 15 minutes
- 14 16 – 20 minutes
- 15 21 – 25 minutes
- 16 26 – 30 minutes
- 17 31 – 35 minutes
- 18 36 – 40 minutes
- 19 41 – 45 minutes
- 20 46 – 50 minutes

- 21 51 – 55 minutes
- 22 56 minutes to an hour
- 23 Between an hour and an hour 15 minutes
- 24 Between 1 hour 16 minutes and 1 hour 30 minutes
- 25 Between 1 hour 31 minutes and 1 hour 45 minutes
- 26 Between 1 hour 46 minutes and 2 hours
- 27 More than 2 hours
- 97 **(DO NOT READ)** Don't know

This is all the questions we have for you today/tonight. Thank you for participating in this survey. Your responses will help us to make an accurate prediction of traffic conditions during an emergency situation. If you have any questions about this survey, please feel free to contact <insert contact name, job title, and phone number/email>.

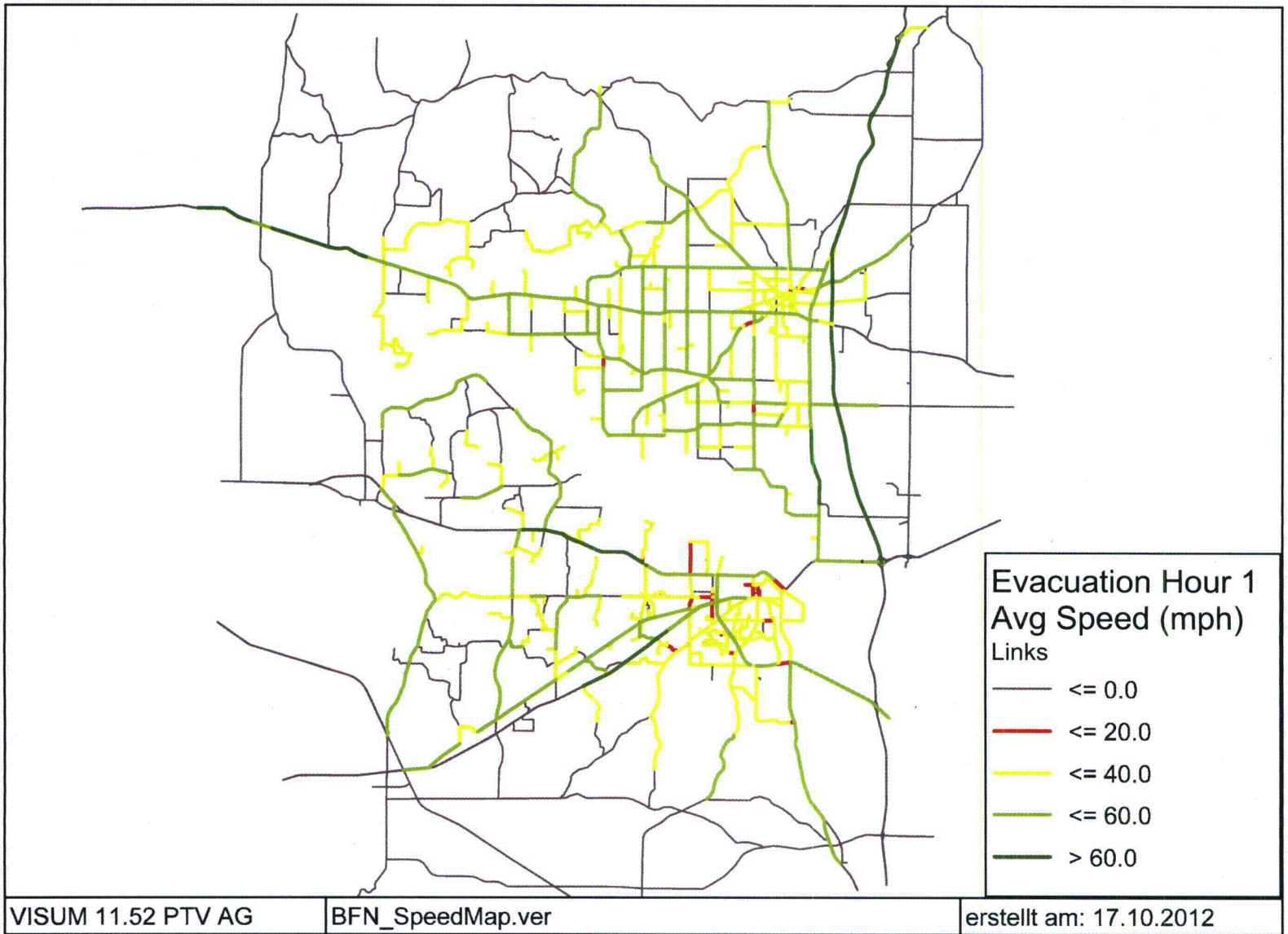


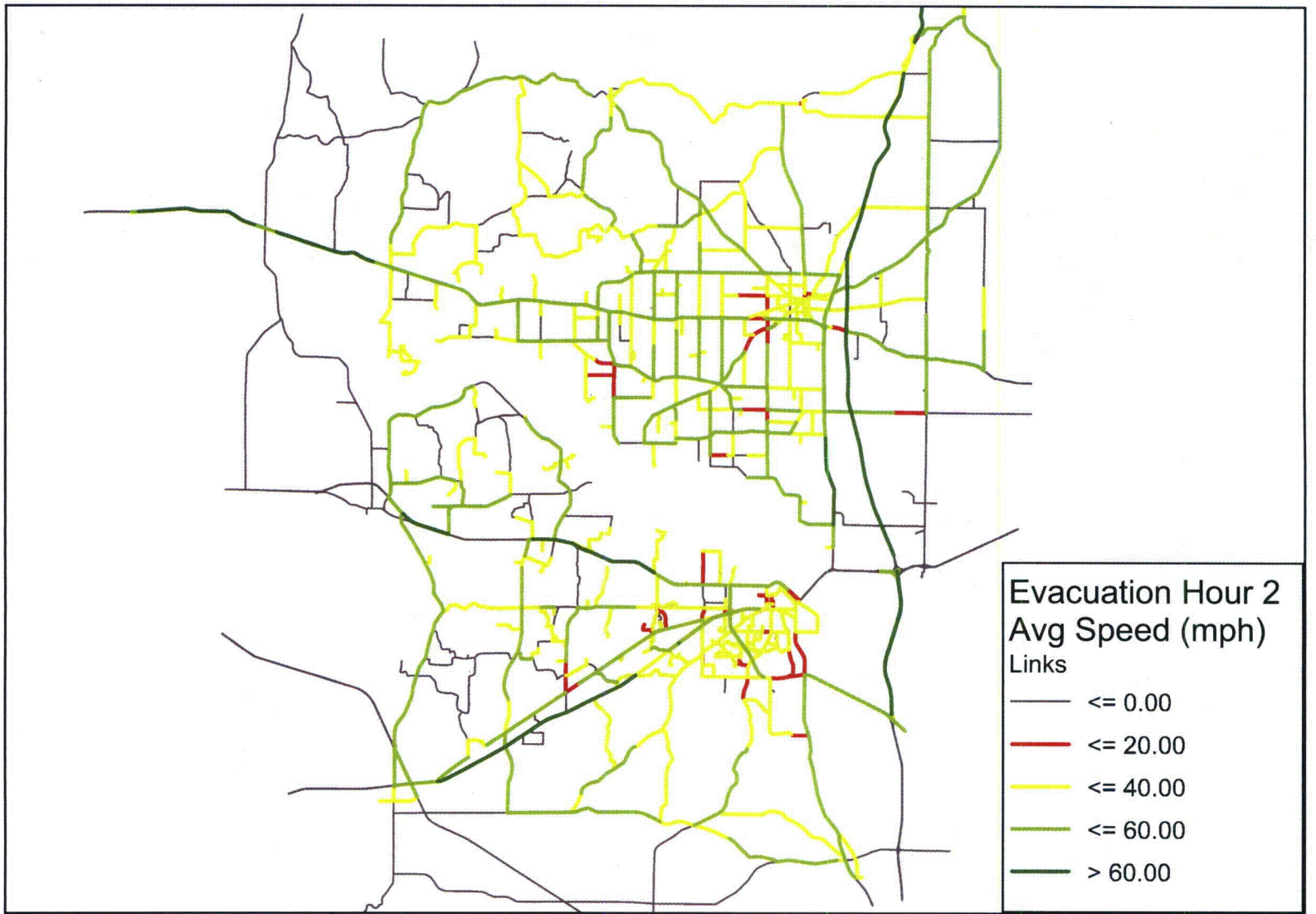
## Appendix F

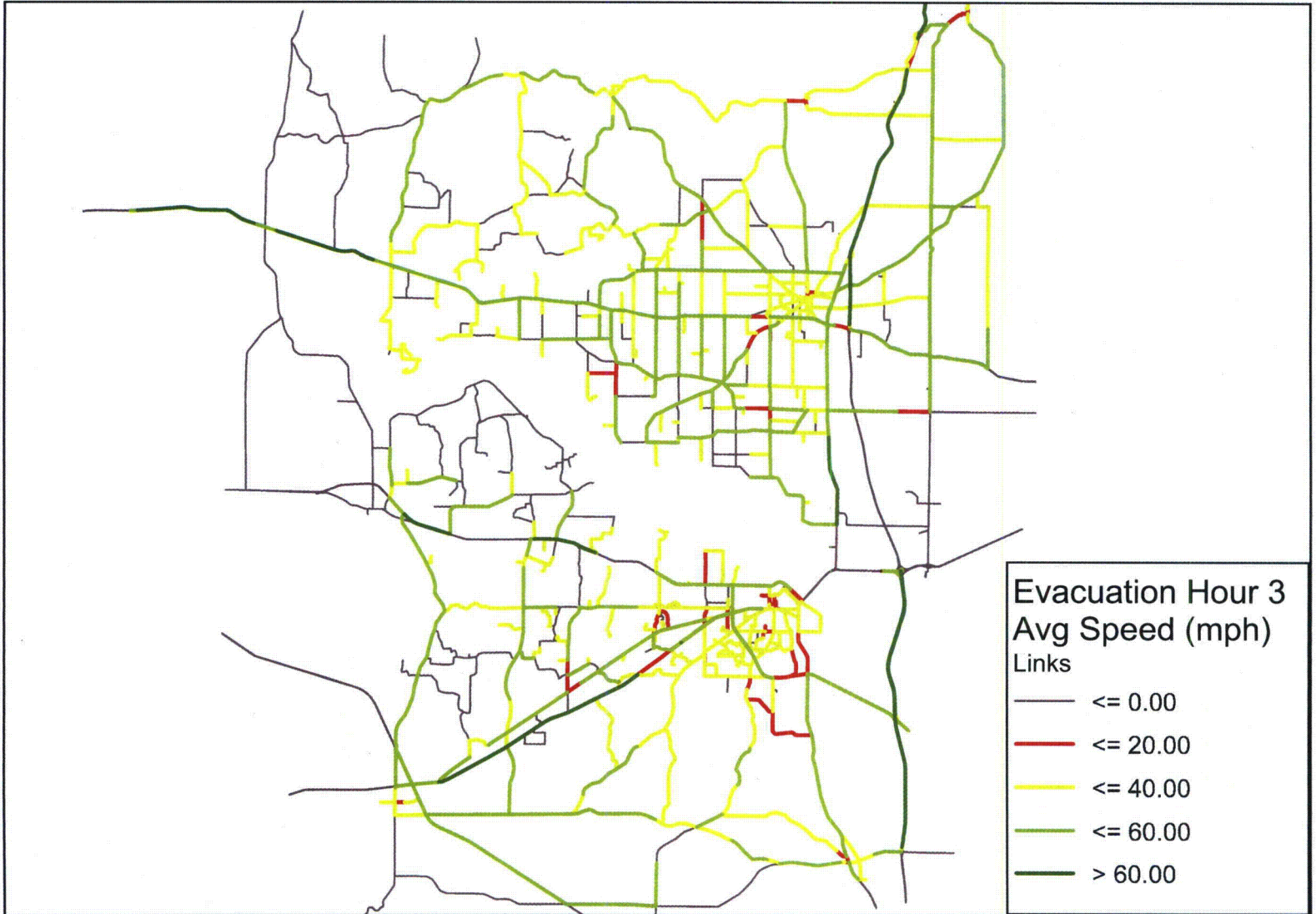
Maps of Average Speed by Hour on  
Browns Ferry Road Network (Winter  
Day, Normal Weather, Full EPZ)

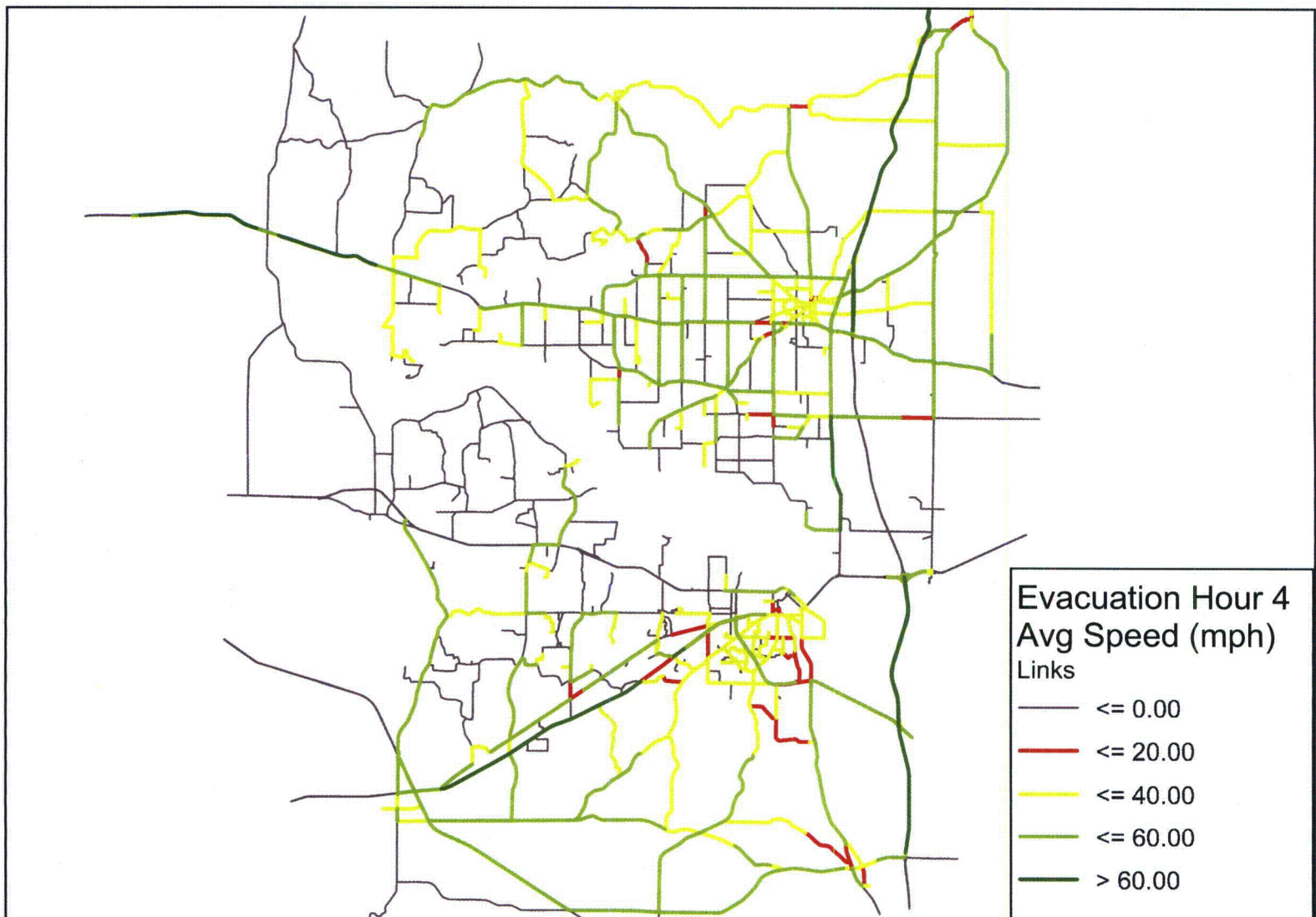


Speed Maps - Browns Ferry  
Winter Day, Normal Weather, Full EPZ Scenario









**Evacuation Hour 4**  
**Avg Speed (mph)**  
Links

—	<= 0.00
—	<= 20.00
—	<= 40.00
—	<= 60.00
—	> 60.00

