

Status:  Y  N  U

**Seismic Walkdown Checklist (SWC)**

Equipment ID No.: 1/2-6661A

Equipment Class: (21) Tanks and Heat Exchangers

Equipment Description: HX, DG COOLING

Project: Quad Cities 2 SWEL

Location (Bldg, Elev, Room/Area): DG, 595.00 ft, ALL

Manufacturer/Model:

**Instructions for Completing Checklist**

This checklist may be used to document the results of the Seismic Walkdown of an item of equipment on the SWEL. The space below each of the following questions may be used to record the results of judgments and findings. Additional space is provided at the end of this checklist for documenting other comments.

**Anchorage**

1. Is anchorage configuration verification required (i.e., is the item one of the 50% of SWEL items requiring such verification)? No
  
2. Is the anchorage free of bent, broken, missing or loose hardware? Yes
  
3. Is the anchorage free of corrosion that is more than mild surface oxidation? Yes
  
4. Is the anchorage free of visible cracks in the concrete near the anchors? Not Applicable  
*Heat exchanger mounted to a saddle at each end via a U-bolt. Saddles are welded to DG skid.*
  
5. Is the anchorage configuration consistent with plant documentation? (Note: This question only applies if the item is one of the 50% for which an anchorage configuration verification is required.) Not Applicable
  
6. Based on the above anchorage evaluations, is the anchorage free of potentially adverse seismic conditions? Yes

Status:  Y  N  U

**Seismic Walkdown Checklist (SWC)**

Equipment ID No.: 1/2-6661A

Equipment Class: (21) Tanks and Heat Exchangers

Equipment Description: HX, DG COOLING

**Interaction Effects**

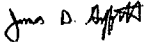

7. Are soft targets free from impact by nearby equipment or structures? Yes
8. Are overhead equipment, distribution systems, ceiling tiles and lighting, and masonry block walls not likely to collapse onto the equipment? Yes  
*Overhead light fixtures judged to be acceptable.*
9. Do attached lines have adequate flexibility to avoid damage? Yes
10. Based on the above seismic interaction evaluations, is equipment free of potentially adverse seismic interaction effects? Yes

**Other Adverse Conditions**

11. Have you looked for and found no adverse seismic conditions that could adversely affect the safety functions of the equipment? Yes

**Comments**

Seismic Walkdown Team: J. Griffith & M. Wodarcyk - 8/8/2012

Evaluated by:  James Griffith Date: 10/4/2012  
 Michael Wodarcyk 10/4/2012

Status:  Y  N  U

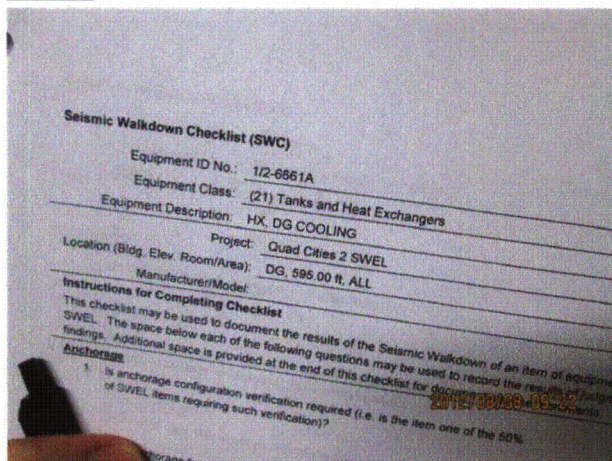
**Seismic Walkdown Checklist (SWC)**

Equipment ID No.: 1/2-6661A

Equipment Class: (21) Tanks and Heat Exchangers

Equipment Description: HX, DG COOLING

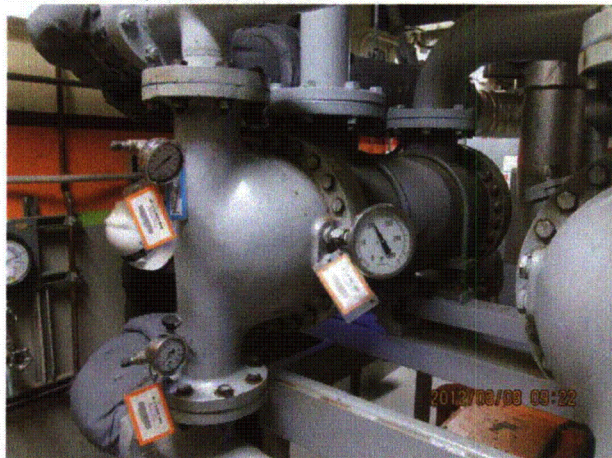
**Photos**



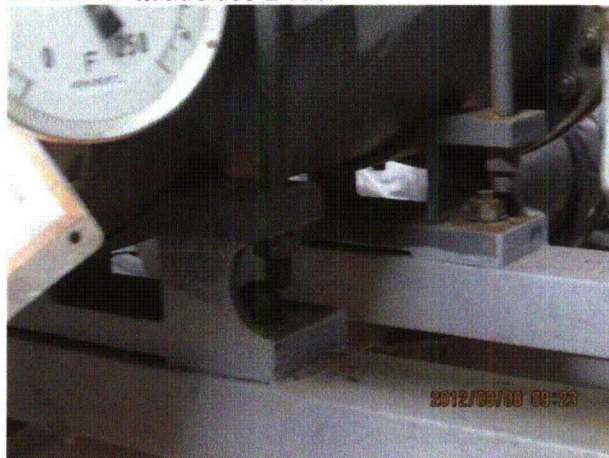
20120808-QuadCities-2 069



20120808-QuadCities-2 070



20120808-QuadCities-2 071



20120808-QuadCities-2 072

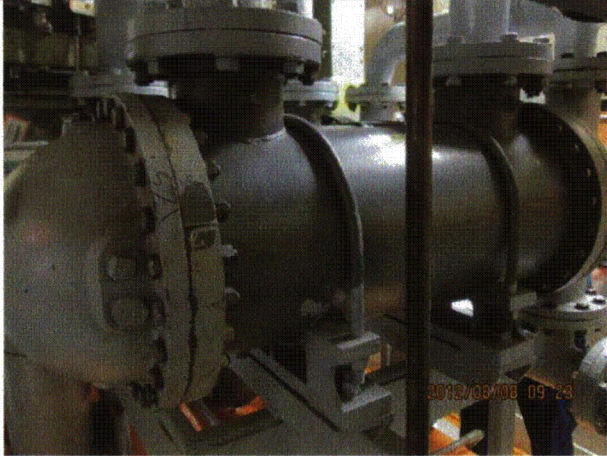
Status:  Y  N  U

**Seismic Walkdown Checklist (SWC)**

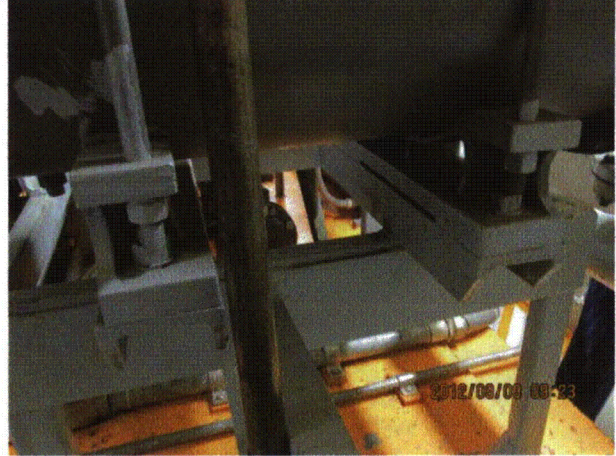
Equipment ID No.: 1/2-6661A

Equipment Class: (21) Tanks and Heat Exchangers

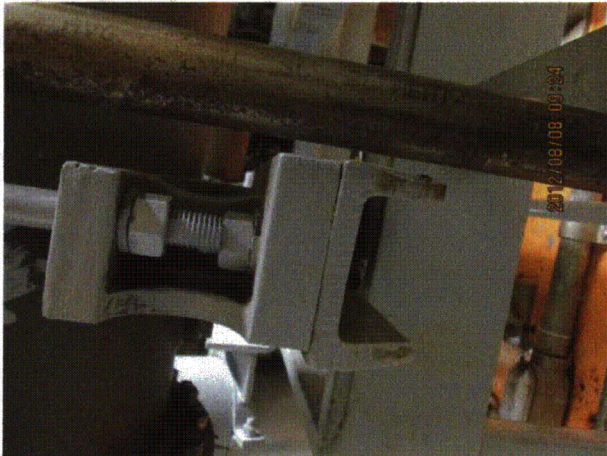
Equipment Description: HX, DG COOLING



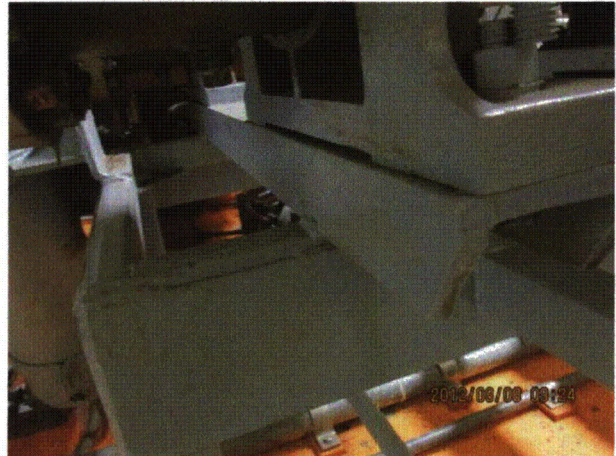
20120808-QuadCities-2 073



20120808-QuadCities-2 074



20120808-QuadCities-2 075



20120808-QuadCities-2 076

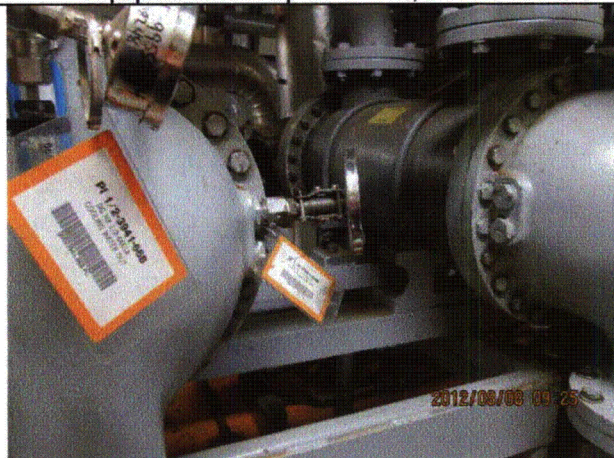
Status:  Y  N  U

**Seismic Walkdown Checklist (SWC)**

Equipment ID No.: 1/2-6661A

Equipment Class: (21) Tanks and Heat Exchangers

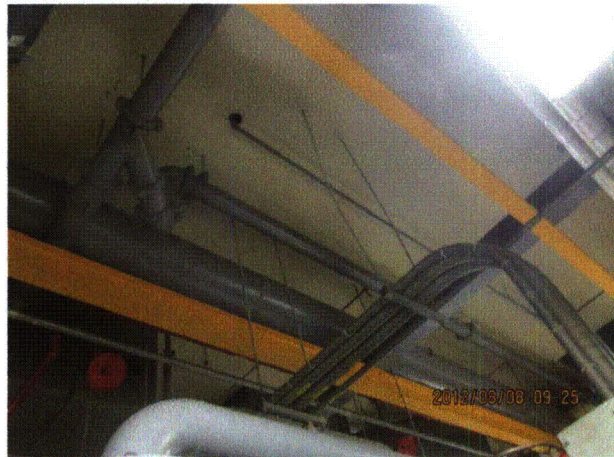
Equipment Description: HX, DG COOLING



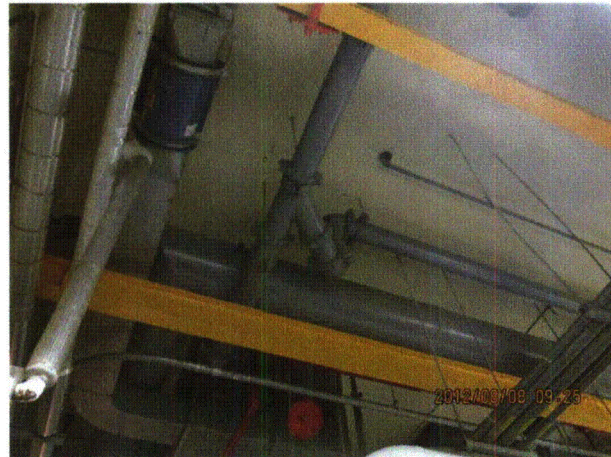
20120808-QuadCities-2 077



20120808-QuadCities-2 078



20120808-QuadCities-2 079



20120808-QuadCities-2 080

Status:  Y  N  U

**Seismic Walkdown Checklist (SWC)**

Equipment ID No.: 1/2-6661A

Equipment Class: (21) Tanks and Heat Exchangers

Equipment Description: HX, DG COOLING



20120808-QuadCities-2 081



20120808-QuadCities-2 082



20120808-QuadCities-2 083



20120808-QuadCities-2 084

Status:  Y  N  U

**Seismic Walkdown Checklist (SWC)**

Equipment ID No.: 125 VDC BATT 2

Equipment Class: (15) Batteries on Racks

Equipment Description: BATTERY, 125V

Project: Quad Cities 2 SWEL

Location (Bldg, Elev, Room/Area): TB, 628.00 ft, ALL

Manufacturer/Model:

**Instructions for Completing Checklist**

This checklist may be used to document the results of the Seismic Walkdown of an item of equipment on the SWEL. The space below each of the following questions may be used to record the results of judgments and findings. Additional space is provided at the end of this checklist for documenting other comments.

**Anchorage**

1. Is anchorage configuration verification required (i.e., is the item one of the 50% of SWEL items requiring such verification)? Yes
  
2. Is the anchorage free of bent, broken, missing or loose hardware? Yes
  
3. Is the anchorage free of corrosion that is more than mild surface oxidation? Yes  
*Minor surface corrosion judged to be acceptable.*
  
4. Is the anchorage free of visible cracks in the concrete near the anchors? Yes  
*Minor shrinkage cracks in floor judged to be acceptable.*
  
5. Is the anchorage configuration consistent with plant documentation? (Note: This question only applies if the item is one of the 50% for which an anchorage configuration verification is required.) Yes
  
6. Based on the above anchorage evaluations, is the anchorage free of potentially adverse seismic conditions? Yes

Status:  Y  N  U

**Seismic Walkdown Checklist (SWC)**

Equipment ID No.: 125 VDC BATT 2

Equipment Class: (15) Batteries on Racks

Equipment Description: BATTERY, 125V

**Interaction Effects**

7. Are soft targets free from impact by nearby equipment or structures? Yes
8. Are overhead equipment, distribution systems, ceiling tiles and lighting, and masonry block walls not likely to collapse onto the equipment? Yes
9. Do attached lines have adequate flexibility to avoid damage? Yes
10. Based on the above seismic interaction evaluations, is equipment free of potentially adverse seismic interaction effects? Yes

**Other Adverse Conditions**

11. Have you looked for and found no adverse seismic conditions that could adversely affect the safety functions of the equipment? Yes

**Comments**

SEWS Anchorage Notes:

Racks are supported on 4x4 tube legs welded to a 8x8x1/2" baseplate. Each baseplate is anchored in only one corner by a 3/8" expansion anchor.

\*\*\*\*\*

Seismic Walkdown Team: J. Griffith & M. Wodarczyk - 8/7/2012

Evaluated by: James D. Griffith James Griffith Date: 10/4/2012

Michael J. Wodarczyk Michael Wodarczyk 10/4/2012



Status:  Y  N  U

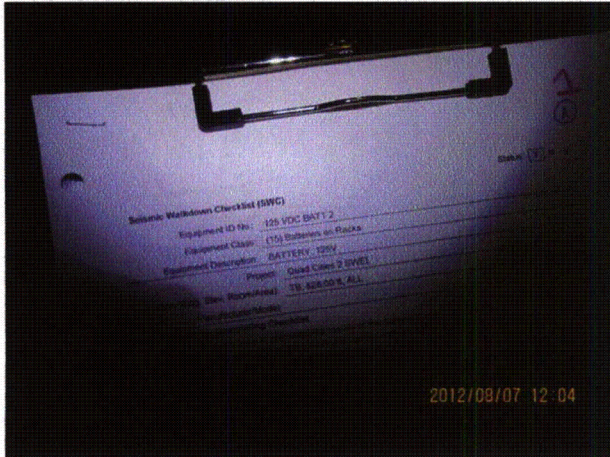
**Seismic Walkdown Checklist (SWC)**

Equipment ID No.: 125 VDC BATT 2

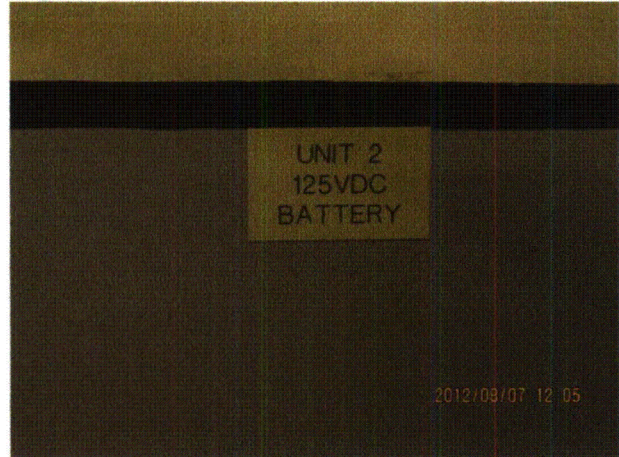
Equipment Class: (15) Batteries on Racks

Equipment Description: BATTERY, 125V

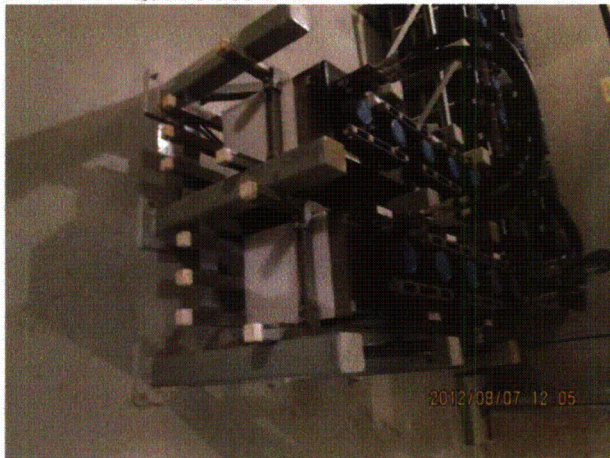
**Photos**



20120807-QuadCities-2 221



20120807-QuadCities-2 222



20120807-QuadCities-2 223



20120807-QuadCities-2 224

Status:  Y  N  U

**Seismic Walkdown Checklist (SWC)**

Equipment ID No.: 125 VDC BATT 2

Equipment Class: (15) Batteries on Racks

Equipment Description: BATTERY, 125V



20120807-QuadCities-2 225



20120807-QuadCities-2 226



20120807-QuadCities-2 227



20120807-QuadCities-2 228



Status:  Y  N  U

**Seismic Walkdown Checklist (SWC)**

Equipment ID No.: 125 VDC BATT 2

Equipment Class: (15) Batteries on Racks

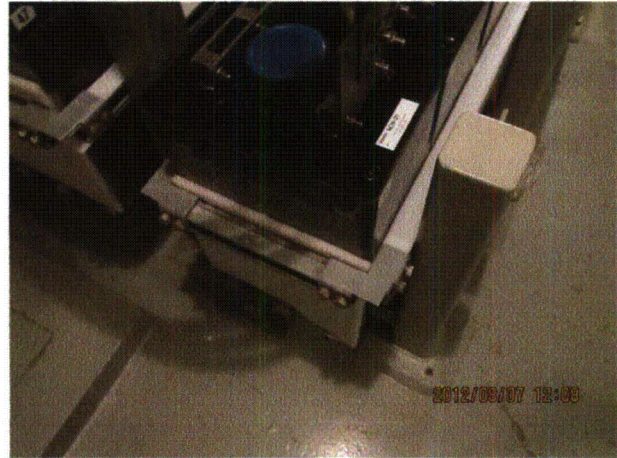
Equipment Description: BATTERY, 125V

20120807-QuadCities-2 229

20120807-QuadCities-2 230



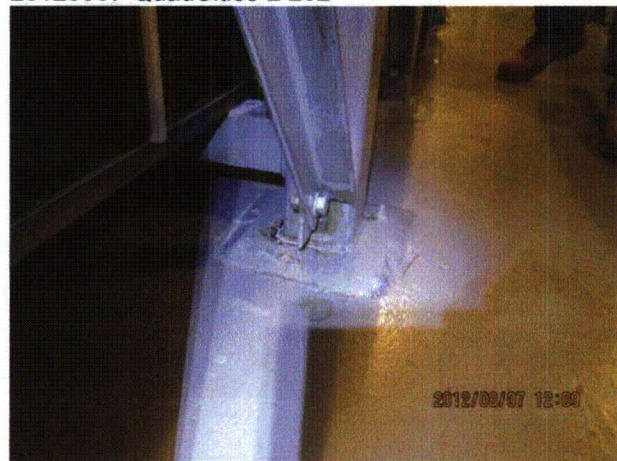
20120807-QuadCities-2 231



20120807-QuadCities-2 232



20120807-QuadCities-2 233



20120807-QuadCities-2 234

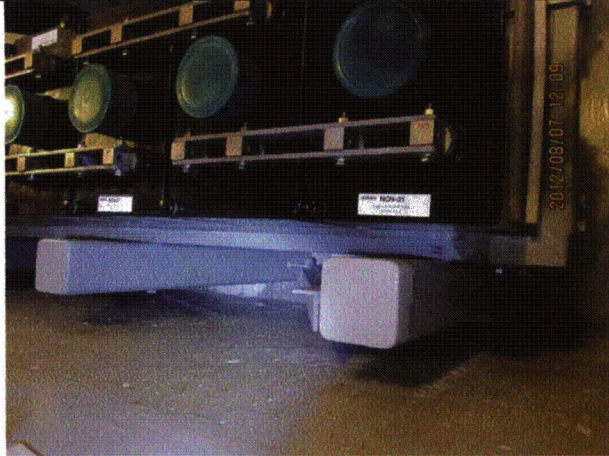
Status:  Y  N  U

**Seismic Walkdown Checklist (SWC)**

Equipment ID No.: 125 VDC BATT 2

Equipment Class: (15) Batteries on Racks

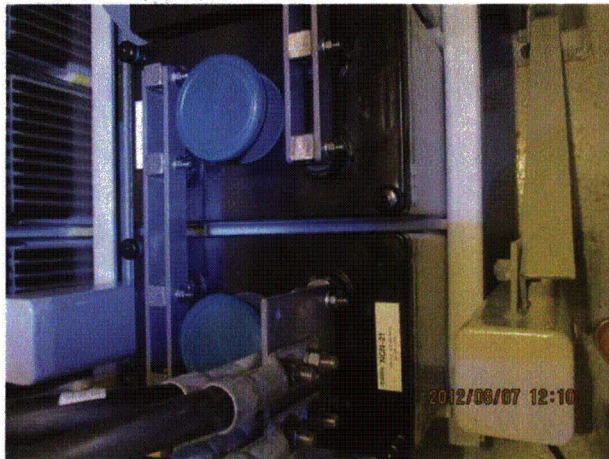
Equipment Description: BATTERY, 125V



20120807-QuadCities-2 235



20120807-QuadCities-2 236



20120807-QuadCities-2 237



20120807-QuadCities-2 238

Status:  Y  N  U

**Seismic Walkdown Checklist (SWC)**

Equipment ID No.: 125 VDC BATT 2

Equipment Class: (15) Batteries on Racks

Equipment Description: BATTERY, 125V



20120807-QuadCities-2 239



20120807-QuadCities-2 240



20120807-QuadCities-2 241



20120807-QuadCities-2 242

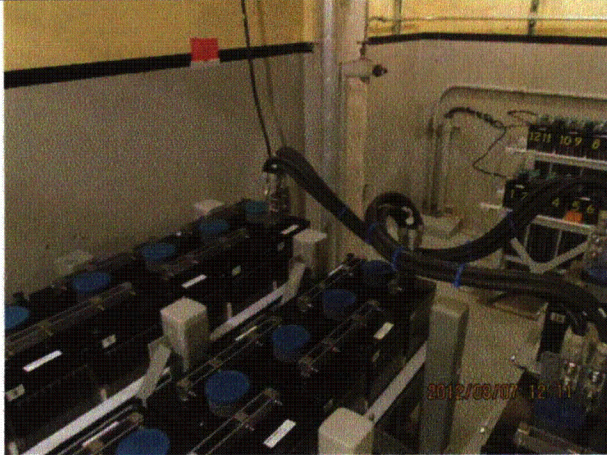
Status:  Y  N  U

**Seismic Walkdown Checklist (SWC)**

Equipment ID No.: 125 VDC BATT 2

Equipment Class: (15) Batteries on Racks

Equipment Description: BATTERY, 125V



20120807-QuadCities-2 243

Status:  Y  N  U

**Seismic Walkdown Checklist (SWC)**

Equipment ID No.: 2-0302-19A

Equipment Class: (8) Motor-Operated and Solenoid-Operated Valves

Equipment Description: SOV, B/U SCRAM

Project: Quad Cities 2 SWEL

Location (Bldg, Elev, Room/Area): RB, 595.00 ft, ALL

Manufacturer/Model:

**Instructions for Completing Checklist**

This checklist may be used to document the results of the Seismic Walkdown of an item of equipment on the SWEL. The space below each of the following questions may be used to record the results of judgments and findings. Additional space is provided at the end of this checklist for documenting other comments.

**Anchorage**

1. Is anchorage configuration verification required (i.e., is the item one of the 50% of SWEL items requiring such verification)? No
  
2. Is the anchorage free of bent, broken, missing or loose hardware? Not Applicable
  
3. Is the anchorage free of corrosion that is more than mild surface oxidation? Not Applicable
  
4. Is the anchorage free of visible cracks in the concrete near the anchors? Not Applicable
  
5. Is the anchorage configuration consistent with plant documentation? (Note: This question only applies if the item is one of the 50% for which an anchorage configuration verification is required.) Not Applicable
  
6. Based on the above anchorage evaluations, is the anchorage free of potentially adverse seismic conditions? Yes

Status:  Y  N  U

**Seismic Walkdown Checklist (SWC)**

Equipment ID No.: 2-0302-19A

Equipment Class: (8) Motor-Operated and Solenoid-Operated Valves

Equipment Description: SOV, B/U SCRAM

**Interaction Effects**

- |   |     |
|---|-----|
| 7. Are soft targets free from impact by nearby equipment or structures?   | Yes |
| 8. Are overhead equipment, distribution systems, ceiling tiles and lighting, and masonry block walls not likely to collapse onto the equipment? | Yes |
| 9. Do attached lines have adequate flexibility to avoid damage?   | Yes |
| 10. Based on the above seismic interaction evaluations, is equipment free of potentially adverse seismic interaction effects?                   | Yes |

**Other Adverse Conditions**

- |  |     |
|--|-----|
| 11. Have you looked for and found no adverse seismic conditions that could adversely affect the safety functions of the equipment? | Yes |
|--|-----|

**Comments**

Seismic Walkdown Team: J. Griffith & M. Wodarcyk - 8/6/2012

See north HCU bank area walk-by for further notes.

Evaluated by:	<u>James D. Griffith</u>	James Griffith	Date:	<u>10/4/2012</u>
	<u>Michael J. Wodarcyk</u>	Michael Wodarcyk		<u>10/4/2012</u>



Status:  Y  N  U

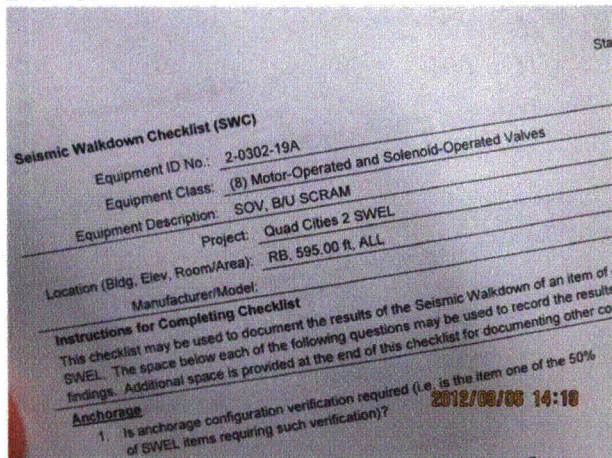
**Seismic Walkdown Checklist (SWC)**

Equipment ID No.: 2-0302-19A

Equipment Class: (8) Motor-Operated and Solenoid-Operated Valves

Equipment Description: SOV, B/U SCRAM

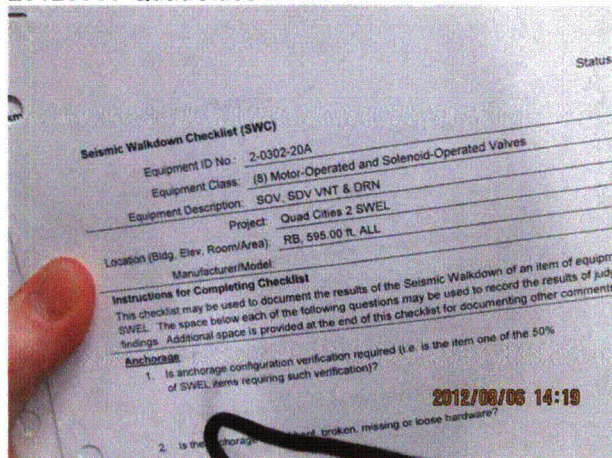
**Photos**



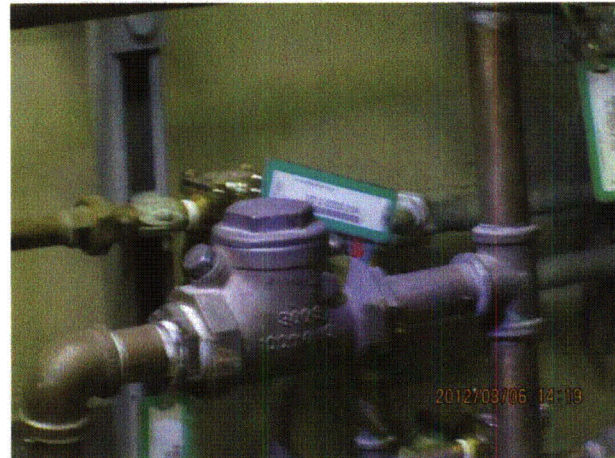
20120806-QuadCities-2 352



20120806-QuadCities-2 353



20120806-QuadCities-2 354



20120806-QuadCities-2 355

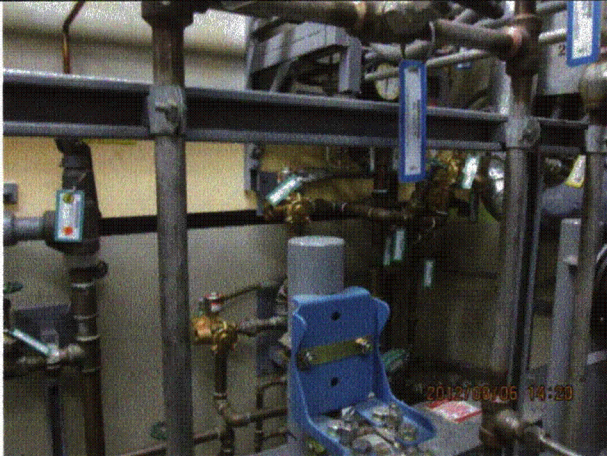
Status:  Y  N  U

**Seismic Walkdown Checklist (SWC)**

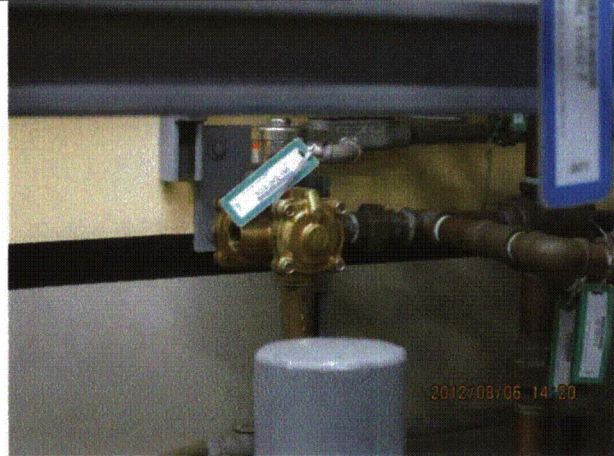
Equipment ID No.: 2-0302-19A

Equipment Class: (8) Motor-Operated and Solenoid-Operated Valves

Equipment Description: SOV, B/U SCRAM



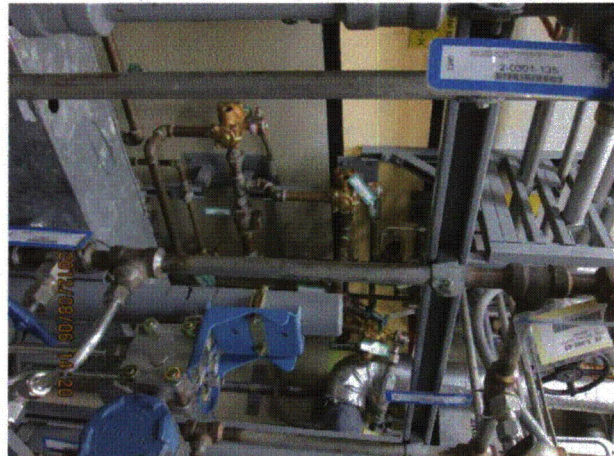
20120806-QuadCities-2 356



20120806-QuadCities-2 357



20120806-QuadCities-2 358



20120806-QuadCities-2 359

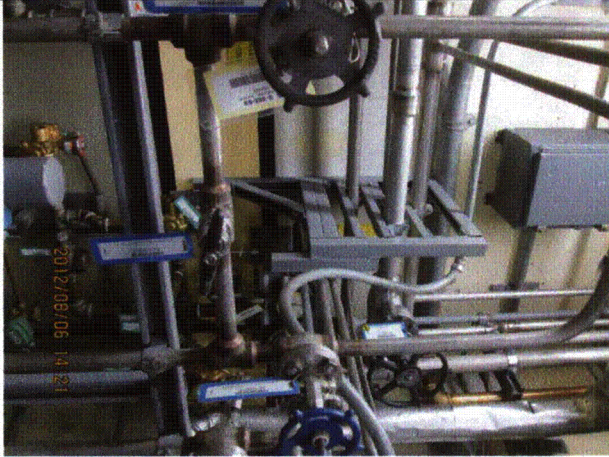
Status:  Y  N  U

**Seismic Walkdown Checklist (SWC)**

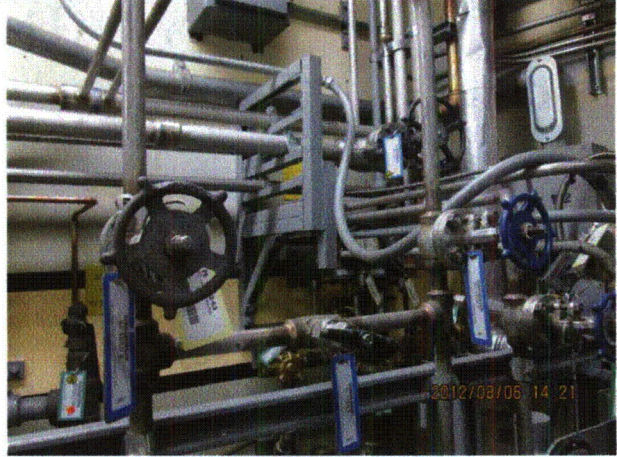
Equipment ID No.: 2-0302-19A

Equipment Class: (8) Motor-Operated and Solenoid-Operated Valves

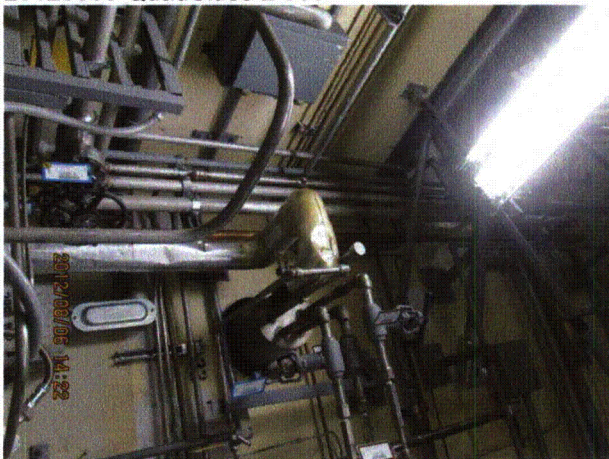
Equipment Description: SOV, B/U SCRAM



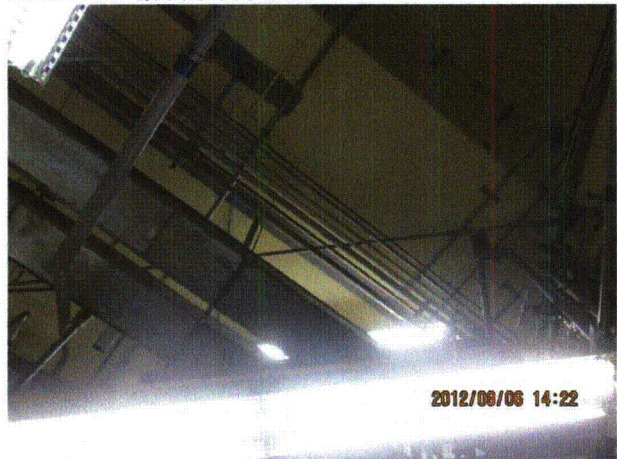
20120806-QuadCities-2 360



20120806-QuadCities-2 361



20120806-QuadCities-2 362



20120806-QuadCities-2 363

Status:  Y  N  U

**Seismic Walkdown Checklist (SWC)**

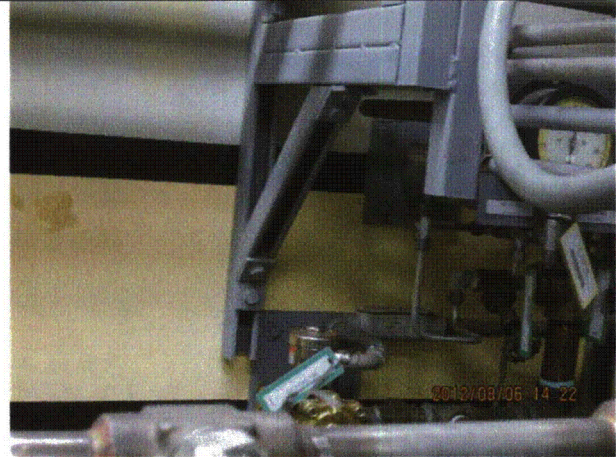
Equipment ID No.: 2-0302-19A

Equipment Class: (8) Motor-Operated and Solenoid-Operated Valves

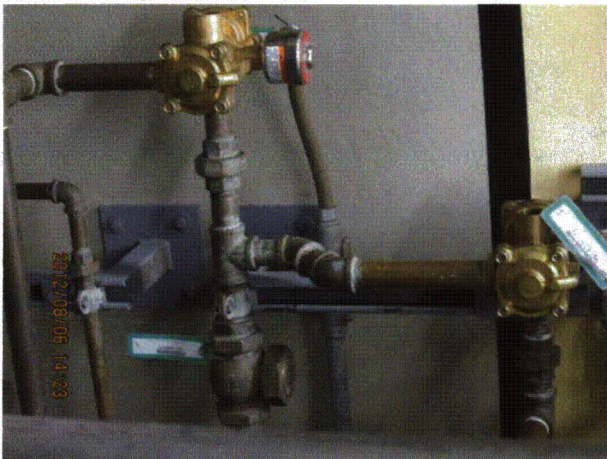
Equipment Description: SOV, B/U SCRAM



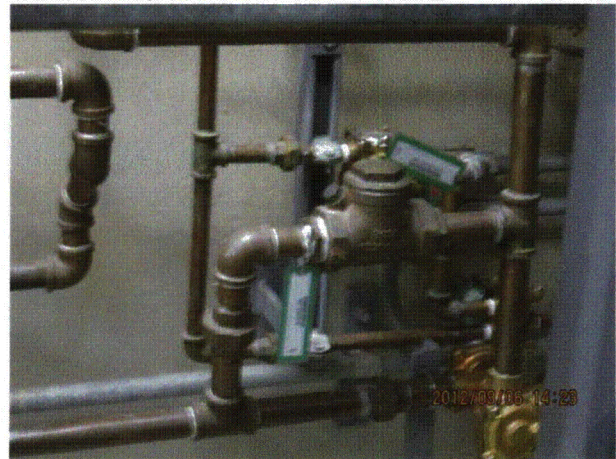
20120806-QuadCities-2 364



20120806-QuadCities-2 365



20120806-QuadCities-2 366



20120806-QuadCities-2 367

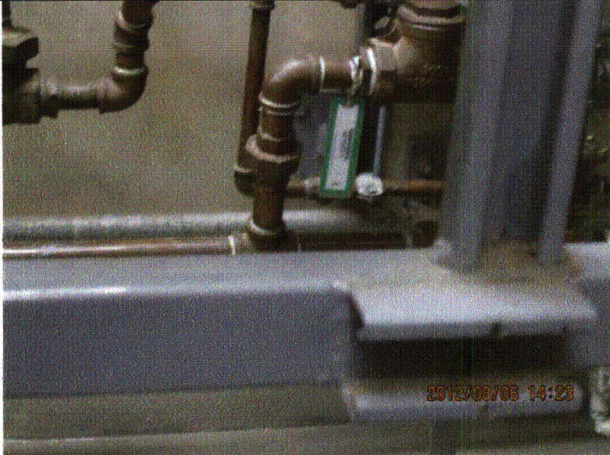
Status:  Y  N  U

**Seismic Walkdown Checklist (SWC)**

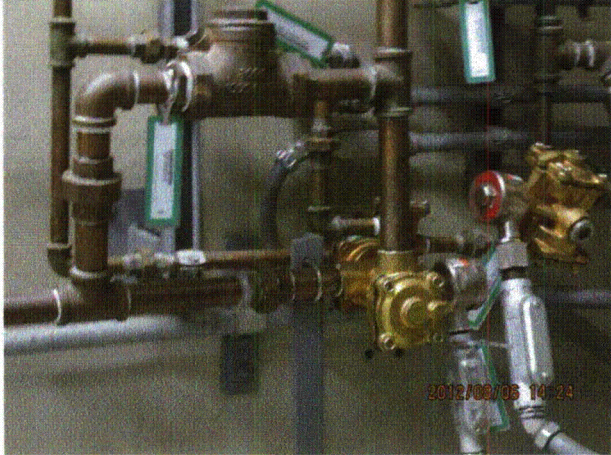
Equipment ID No.: 2-0302-19A

Equipment Class: (8) Motor-Operated and Solenoid-Operated Valves

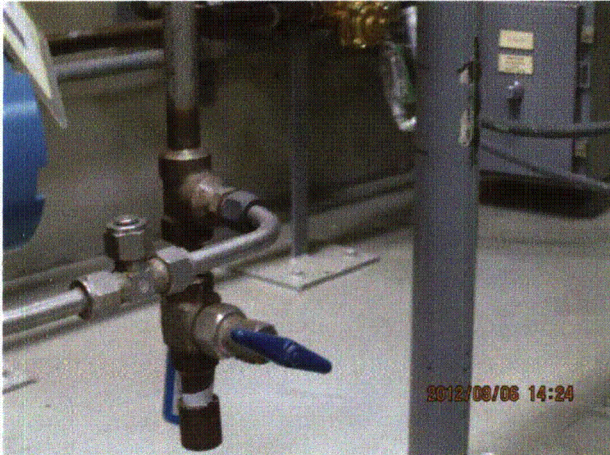
Equipment Description: SOV, B/U SCRAM



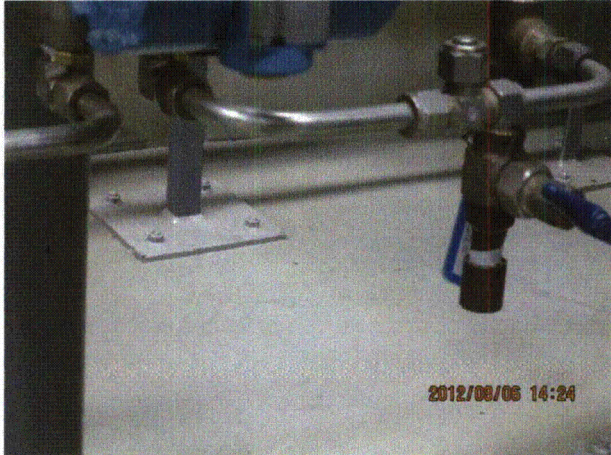
20120806-QuadCities-2 368



20120806-QuadCities-2 369



20120806-QuadCities-2 370



20120806-QuadCities-2 371

Status:  Y  N  U

**Seismic Walkdown Checklist (SWC)**

Equipment ID No.: 2-0302-20A

Equipment Class: (8) Motor-Operated and Solenoid-Operated Valves

Equipment Description: SOV, SDV VNT & DRN

Project: Quad Cities 2 SWEL

Location (Bldg, Elev, Room/Area): RB, 595.00 ft, ALL

Manufacturer/Model:

**Instructions for Completing Checklist**

This checklist may be used to document the results of the Seismic Walkdown of an item of equipment on the SWEL. The space below each of the following questions may be used to record the results of judgments and findings. Additional space is provided at the end of this checklist for documenting other comments.

**Anchorage**

- |  |                |
|--|----------------|
| 1. Is anchorage configuration verification required (i.e., is the item one of the 50% of SWEL items requiring such verification)?  | No             |
| 2. Is the anchorage free of bent, broken, missing or loose hardware?   | Not Applicable |
| 3. Is the anchorage free of corrosion that is more than mild surface oxidation?  | Not Applicable |
| 4. Is the anchorage free of visible cracks in the concrete near the anchors?   | Not Applicable |
| 5. Is the anchorage configuration consistent with plant documentation? (Note: This question only applies if the item is one of the 50% for which an anchorage configuration verification is required.) | Not Applicable |
| 6. Based on the above anchorage evaluations, is the anchorage free of potentially adverse seismic conditions?  | Yes            |

Status:  Y  N  U

**Seismic Walkdown Checklist (SWC)**

Equipment ID No.: 2-0302-20A

Equipment Class: (8) Motor-Operated and Solenoid-Operated Valves

Equipment Description: SOV, SDV VNT & DRN

**Interaction Effects**

7. Are soft targets free from impact by nearby equipment or structures? Yes
8. Are overhead equipment, distribution systems, ceiling tiles and lighting, and masonry block walls not likely to collapse onto the equipment? Yes
9. Do attached lines have adequate flexibility to avoid damage? Yes
10. Based on the above seismic interaction evaluations, is equipment free of potentially adverse seismic interaction effects? Yes

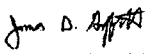
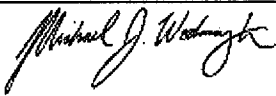
**Other Adverse Conditions**

11. Have you looked for and found no adverse seismic conditions that could adversely affect the safety functions of the equipment? Yes

**Comments**

Seismic Walkdown Team: J. Griffith & M. Wodarcyk - 8/6/2012

See north HCU bank area walk-by for further notes.

Evaluated by:  James Griffith Date: 10/4/2012  
 Michael Wodarcyk 10/4/2012

Status:  Y  N  U

**Seismic Walkdown Checklist (SWC)**

Equipment ID No.: 2-0302-20A

Equipment Class: (8) Motor-Operated and Solenoid-Operated Valves

Equipment Description: SOV, SDV VNT & DRN

**Photos**

---



Status:  Y  N  U

**Seismic Walkdown Checklist (SWC)**

Equipment ID No.: 2-0302-21A

Equipment Class: (7) Fluid-Operated Valves

Equipment Description: VALVE, NO. BNK SDV VNT - 2A SDV INBD VENT VLV

Project: Quad Cities 2 SWEL

Location (Bldg, Elev, Room/Area): RB, 595.00 ft, ALL

Manufacturer/Model:

**Instructions for Completing Checklist**

This checklist may be used to document the results of the Seismic Walkdown of an item of equipment on the SWEL. The space below each of the following questions may be used to record the results of judgments and findings. Additional space is provided at the end of this checklist for documenting other comments.

**Anchorage**

1. Is anchorage configuration verification required (i.e., is the item one of the 50% of SWEL items requiring such verification)? No
  
2. Is the anchorage free of bent, broken, missing or loose hardware? Not Applicable
  
3. Is the anchorage free of corrosion that is more than mild surface oxidation? Not Applicable
  
4. Is the anchorage free of visible cracks in the concrete near the anchors? Not Applicable
  
5. Is the anchorage configuration consistent with plant documentation? (Note: This question only applies if the item is one of the 50% for which an anchorage configuration verification is required.) Not Applicable
  
6. Based on the above anchorage evaluations, is the anchorage free of potentially adverse seismic conditions? Yes

Status:  Y  N  U

**Seismic Walkdown Checklist (SWC)**

Equipment ID No.: 2-0302-21A

Equipment Class: (7) Fluid-Operated Valves

Equipment Description: VALVE, NO. BNK SDV VNT - 2A SDV INBD VENT VLV

**Interaction Effects**

7. Are soft targets free from impact by nearby equipment or structures? Yes
8. Are overhead equipment, distribution systems, ceiling tiles and lighting, and masonry block walls not likely to collapse onto the equipment? Yes
9. Do attached lines have adequate flexibility to avoid damage? Yes
10. Based on the above seismic interaction evaluations, is equipment free of potentially adverse seismic interaction effects? Yes

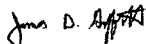
**Other Adverse Conditions**


11. Have you looked for and found no adverse seismic conditions that could adversely affect the safety functions of the equipment? Yes

**Comments**

Seismic Walkdown Team: J. Griffith & M. Wodarcyk - 8/6/2012

See north HCU bank area walk-by for further notes.

Evaluated by:  James Griffith Date: 10/4/2012

 Michael Wodarcyk 10/4/2012

Status:  Y  N  U

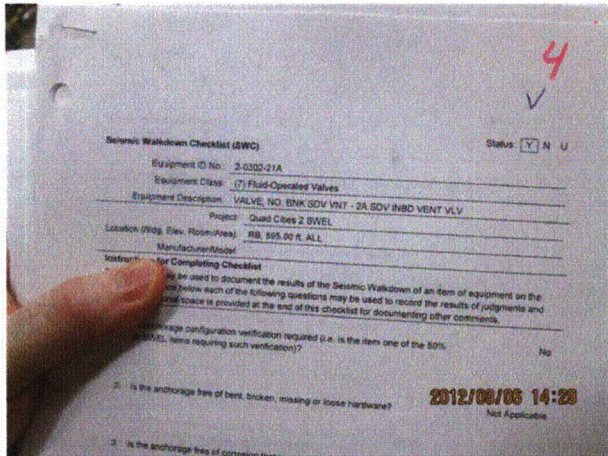
### Seismic Walkdown Checklist (SWC)

Equipment ID No.: 2-0302-21A

Equipment Class: (7) Fluid-Operated Valves

Equipment Description: VALVE, NO. BNK SDV VNT - 2A SDV INBD VENT VLV

#### Photos



20120806-QuadCities-2 372



20120806-QuadCities-2 373



20120806-QuadCities-2 374



20120806-QuadCities-2 375

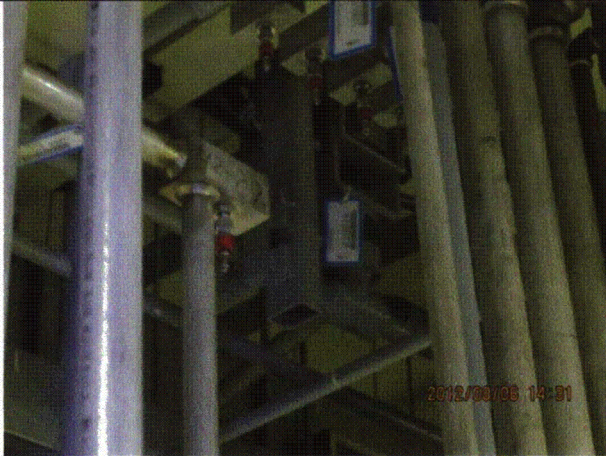
Status:  Y  N  U

**Seismic Walkdown Checklist (SWC)**

Equipment ID No.: 2-0302-21A

Equipment Class: (7) Fluid-Operated Valves

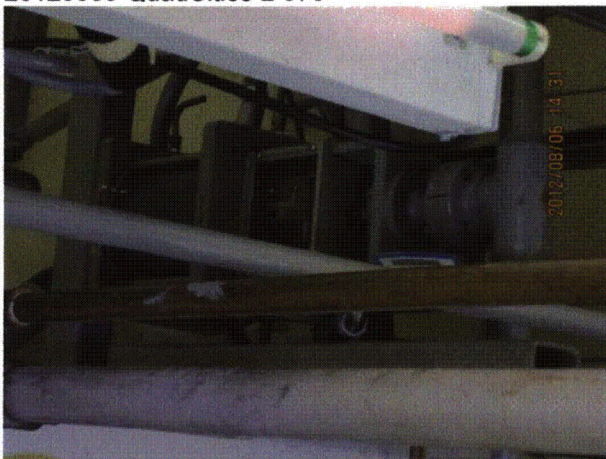
Equipment Description: VALVE, NO. BNK SDV VNT - 2A SDV INBD VENT VLV



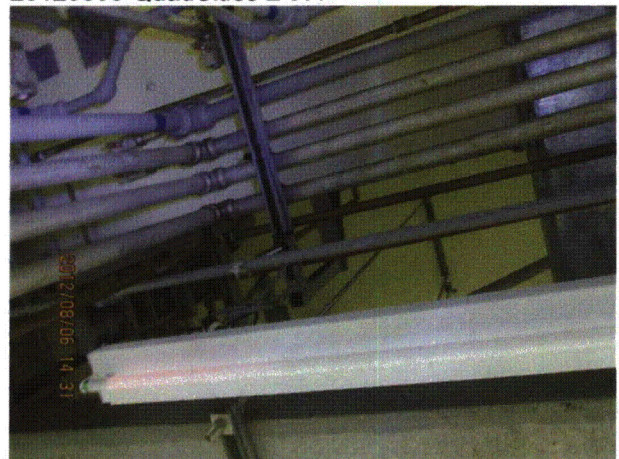
20120806-QuadCities-2 376



20120806-QuadCities-2 377



20120806-QuadCities-2 378



20120806-QuadCities-2 379

Status:  Y  N  U

**Seismic Walkdown Checklist (SWC)**

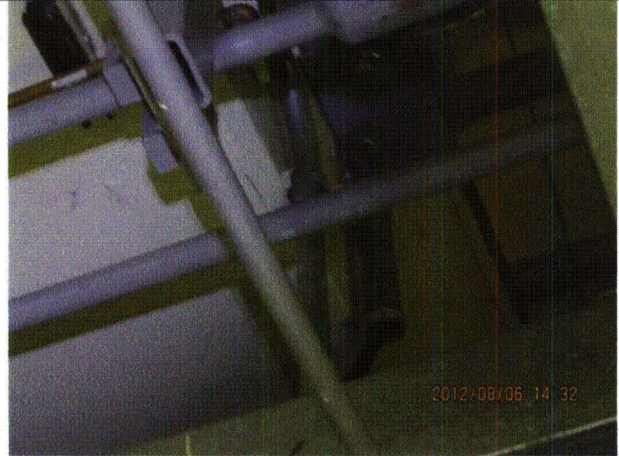
Equipment ID No.: 2-0302-21A

Equipment Class: (7) Fluid-Operated Valves

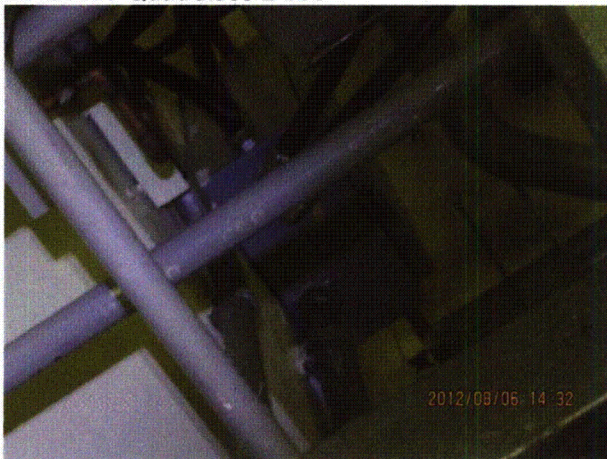
Equipment Description: VALVE, NO. BNK SDV VNT - 2A SDV INBD VENT VLV



20120806-QuadCities-2 380



20120806-QuadCities-2 381



20120806-QuadCities-2 382



20120806-QuadCities-2 383

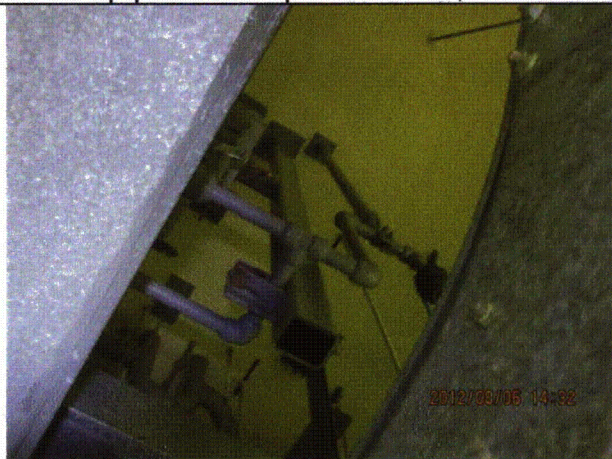
Status:  Y  N  U

**Seismic Walkdown Checklist (SWC)**

Equipment ID No.: 2-0302-21A

Equipment Class: (7) Fluid-Operated Valves

Equipment Description: VALVE, NO. BNK SDV VNT - 2A SDV INBD VENT VLV



20120806-QuadCities-2 384



20120806-QuadCities-2 385

Status:  Y  N  U

**Seismic Walkdown Checklist (SWC)**

Equipment ID No.: 2-0302-22A

Equipment Class: (7) Fluid-Operated Valves

Equipment Description: VALVE, NO. BNK SDV DRN - 2A SDV 2A INBD DRN VLV

Project: Quad Cities 2 SWEL

Location (Bldg, Elev, Room/Area): RB, 554.00 ft, ALL

Manufacturer/Model:

**Instructions for Completing Checklist**

This checklist may be used to document the results of the Seismic Walkdown of an item of equipment on the SWEL. The space below each of the following questions may be used to record the results of judgments and findings. Additional space is provided at the end of this checklist for documenting other comments.

**Anchorage**

1. Is anchorage configuration verification required (i.e., is the item one of the 50% of SWEL items requiring such verification)? No
  
2. Is the anchorage free of bent, broken, missing or loose hardware? Not Applicable
  
3. Is the anchorage free of corrosion that is more than mild surface oxidation? Not Applicable
  
4. Is the anchorage free of visible cracks in the concrete near the anchors? Not Applicable
  
5. Is the anchorage configuration consistent with plant documentation? (Note: This question only applies if the item is one of the 50% for which an anchorage configuration verification is required.) Not Applicable
  
6. Based on the above anchorage evaluations, is the anchorage free of potentially adverse seismic conditions? Yes

Status:  Y  N  U

**Seismic Walkdown Checklist (SWC)**

Equipment ID No.: 2-0302-22A

Equipment Class: (7) Fluid-Operated Valves

Equipment Description: VALVE, NO. BNK SDV DRN - 2A SDV 2A INBD DRN VLV

**Interaction Effects**

7. Are soft targets free from impact by nearby equipment or structures? Yes

*Associated solenoid valve approximately 1/8-inch from existing lifting lug. Pipe is laterally restrained near valve; thus, movement of solenoid valve toward lifting lug is restrained. In addition, valve fails closed. Judged to be acceptable. See IR 1400097.*

8. Are overhead equipment, distribution systems, ceiling tiles and lighting, and masonry block walls not likely to collapse onto the equipment? Yes

9. Do attached lines have adequate flexibility to avoid damage? Yes

10. Based on the above seismic interaction evaluations, is equipment free of potentially adverse seismic interaction effects? Yes

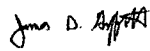
**Other Adverse Conditions**

11. Have you looked for and found no adverse seismic conditions that could adversely affect the safety functions of the equipment? Yes

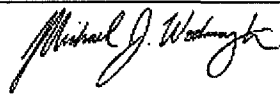
**Comments**

Seismic Walkdown Team: J. Griffith & M. Wodarcyk - 8/10/2012

Evaluated by:

 James Griffith

Date: 10/4/2012

 Michael Wodarcyk

10/4/2012



Status:  Y  N  U

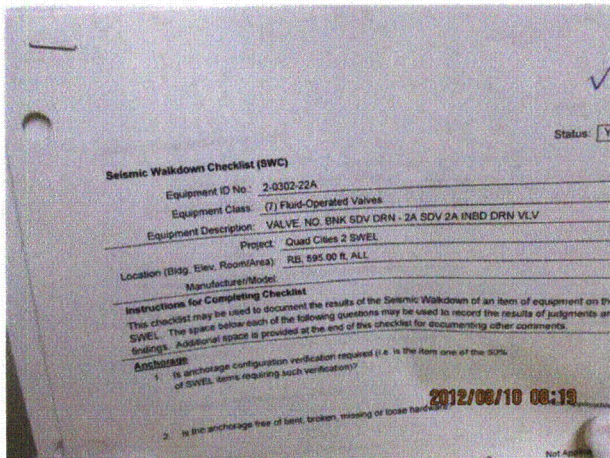
**Seismic Walkdown Checklist (SWC)**

Equipment ID No.: 2-0302-22A

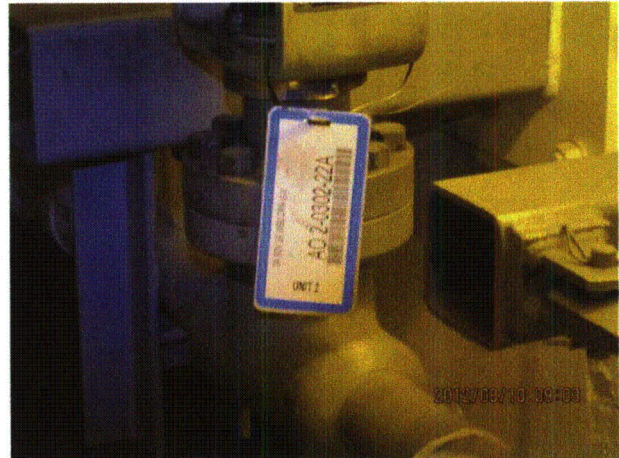
Equipment Class: (7) Fluid-Operated Valves

Equipment Description: VALVE, NO. BNK SDV DRN - 2A SDV 2A INBD DRN VLV

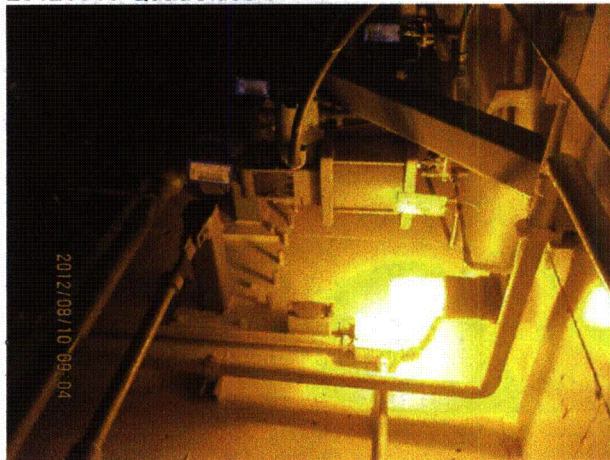
**Photos**



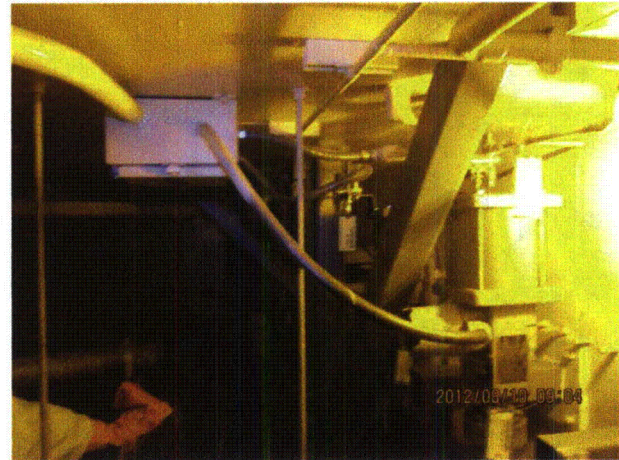
20120810-QuadCities-2 001



20120810-QuadCities-2 100



20120810-QuadCities-2 101



20120810-QuadCities-2 102

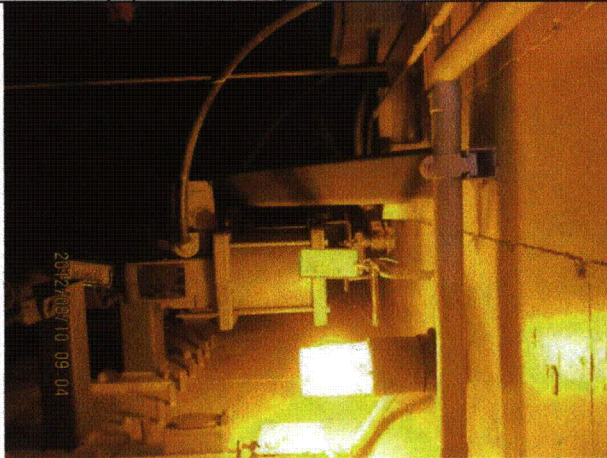
Status:  Y  N  U

**Seismic Walkdown Checklist (SWC)**

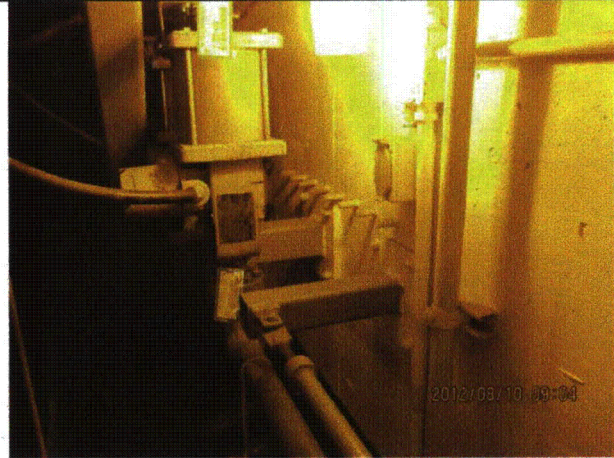
Equipment ID No.: 2-0302-22A

Equipment Class: (7) Fluid-Operated Valves

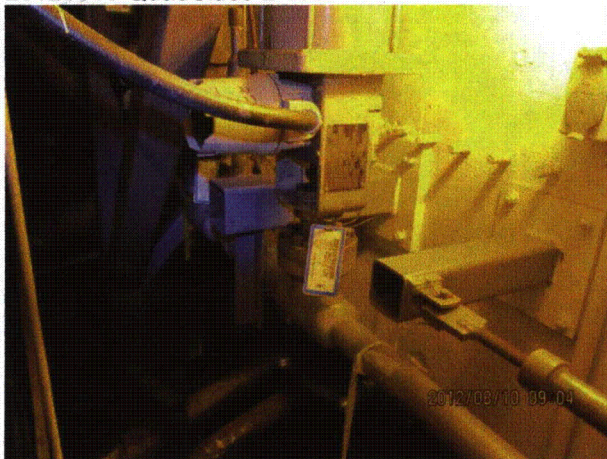
Equipment Description: VALVE, NO. BNK SDV DRN - 2A SDV 2A INBD DRN VLV



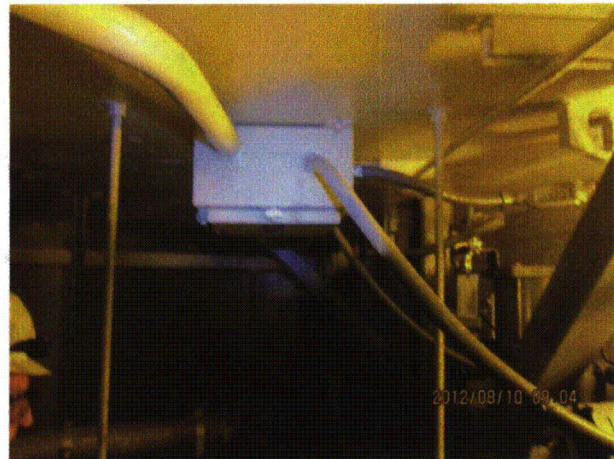
20120810-QuadCities-2 103



20120810-QuadCities-2 104



20120810-QuadCities-2 105



20120810-QuadCities-2 106

Status:  Y  N  U

**Seismic Walkdown Checklist (SWC)**

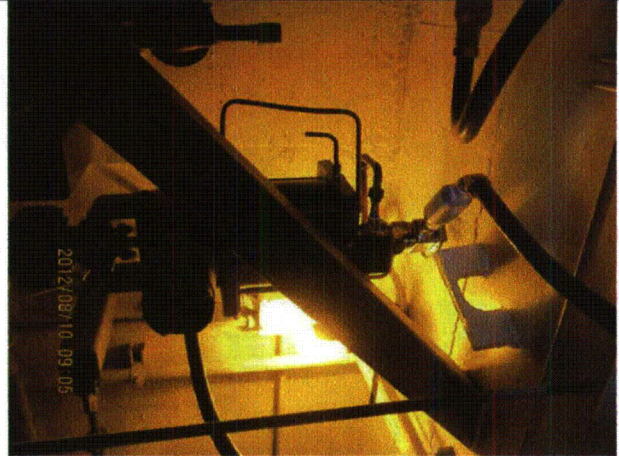
Equipment ID No.: 2-0302-22A

Equipment Class: (7) Fluid-Operated Valves

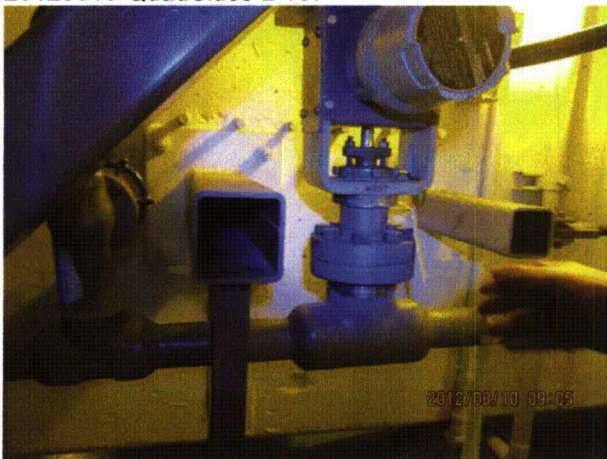
Equipment Description: VALVE, NO. BNK SDV DRN - 2A SDV 2A INBD DRN VLV



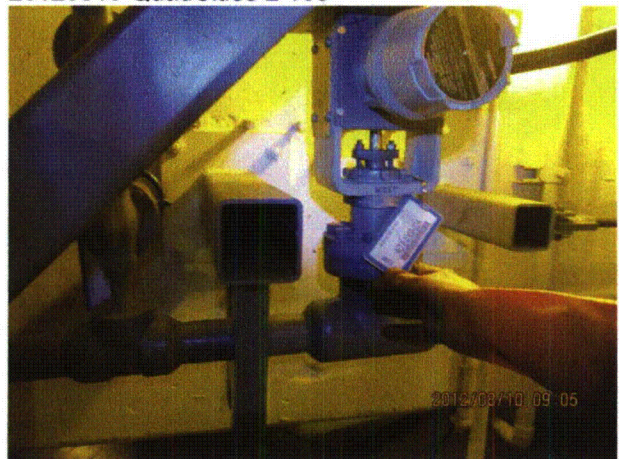
20120810-QuadCities-2 107



20120810-QuadCities-2 108



20120810-QuadCities-2 109



20120810-QuadCities-2 110

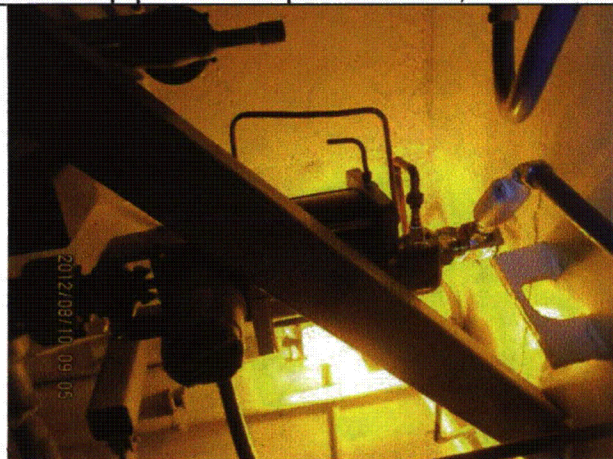
Status:  Y  N  U

**Seismic Walkdown Checklist (SWC)**

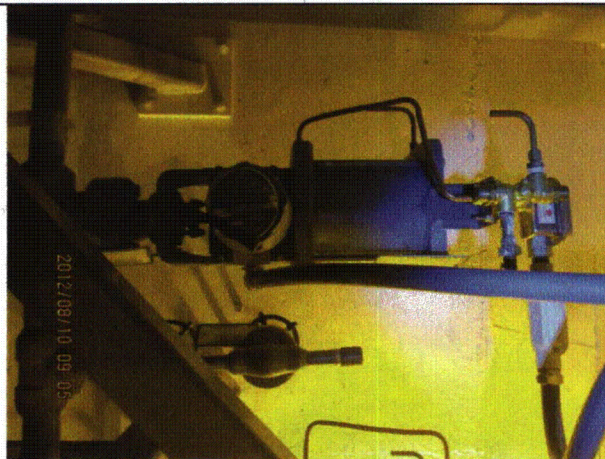
Equipment ID No.: 2-0302-22A

Equipment Class: (7) Fluid-Operated Valves

Equipment Description: VALVE, NO. BNK SDV DRN - 2A SDV 2A INBD DRN VLV



20120810-QuadCities-2 111



20120810-QuadCities-2 112

Status:  Y  N  U

**Seismic Walkdown Checklist (SWC)**

Equipment ID No.: 2-0305-125-22-27

Equipment Class: (21) Tanks and Heat Exchangers

Equipment Description: SCRAM WATER ACCUMULTOR (22-27 F-7 (South))

Project: Quad Cities 2 SWEL

Location (Bldg, Elev, Room/Area): RB, 595.00 ft, ALL

Manufacturer/Model:

**Instructions for Completing Checklist**

This checklist may be used to document the results of the Seismic Walkdown of an item of equipment on the SWEL. The space below each of the following questions may be used to record the results of judgments and findings. Additional space is provided at the end of this checklist for documenting other comments.

**Anchorage**

- |    |  |                |
|----|--|----------------|
| 1. | Is anchorage configuration verification required (i.e., is the item one of the 50% of SWEL items requiring such verification)?   | No             |
| 2. | Is the anchorage free of bent, broken, missing or loose hardware?  | Not Applicable |
| 3. | Is the anchorage free of corrosion that is more than mild surface oxidation?   | Not Applicable |
| 4. | Is the anchorage free of visible cracks in the concrete near the anchors?  | Not Applicable |
| 5. | Is the anchorage configuration consistent with plant documentation? (Note: This question only applies if the item is one of the 50% for which an anchorage configuration verification is required.)                                  | Not Applicable |
| 6. | Based on the above anchorage evaluations, is the anchorage free of potentially adverse seismic conditions?<br><i>The scram water accumulator is an in-line component that is adequately restrained to the CRD/HCU support frame.</i> | Yes            |

**Interaction Effects**

- |    |  |     |
|----|--|-----|
| 7. | Are soft targets free from impact by nearby equipment or structures? | Yes |
|----|--|-----|

Status:  Y  N  U

**Seismic Walkdown Checklist (SWC)**

Equipment ID No.: 2-0305-125-22-27

Equipment Class: (21) Tanks and Heat Exchangers

Equipment Description: SCRAM WATER ACCUMULTOR (22-27 F-7 (South))

*Tubes, conduits, and pipes in close proximity are flexible and judged to be acceptable.*

8. Are overhead equipment, distribution systems, ceiling tiles and lighting, and masonry block walls not likely to collapse onto the equipment? Yes  
*One end of light supported by a beam clamp oriented incorrectly. Mitigated by deceleration and softening due to power cord. Judged to be acceptable.*
9. Do attached lines have adequate flexibility to avoid damage? Yes
10. Based on the above seismic interaction evaluations, is equipment free of potentially adverse seismic interaction effects? Yes

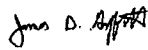
**Other Adverse Conditions**

11. Have you looked for and found no adverse seismic conditions that could adversely affect the safety functions of the equipment? Yes  
*Tubes in close proximity to gallery bracket. Flexible tubes and gallery braced against lateral translation. Judged to be acceptable.*


**Comments**

Seismic Walkdown Team: J. Griffith & M. Wodarcyk - 8/6/2012

Evaluated by:

 James Griffith

Date: 10/4/2012

  
Michael Wodarcyk

10/4/2012

**Photos**

Status:  Y  N  U

**Seismic Walkdown Checklist (SWC)**

Equipment ID No.: 2-0305-125-30-11

Equipment Class: (21) Tanks and Heat Exchangers

Equipment Description: SCRAM WATER ACCUMULTOR (30-11 H-3 (South))

Project: Quad Cities 2 SWEL

Location (Bldg, Elev, Room/Area): RB, 595.00 ft, ALL

Manufacturer/Model:

**Instructions for Completing Checklist**

This checklist may be used to document the results of the Seismic Walkdown of an item of equipment on the SWEL. The space below each of the following questions may be used to record the results of judgments and findings. Additional space is provided at the end of this checklist for documenting other comments.

**Anchorage**

- |    |  |                |
|----|--|----------------|
| 1. | Is anchorage configuration verification required (i.e., is the item one of the 50% of SWEL items requiring such verification)?   | No             |
| 2. | Is the anchorage free of bent, broken, missing or loose hardware?  | Not Applicable |
| 3. | Is the anchorage free of corrosion that is more than mild surface oxidation?   | Not Applicable |
| 4. | Is the anchorage free of visible cracks in the concrete near the anchors?  | Not Applicable |
| 5. | Is the anchorage configuration consistent with plant documentation? (Note: This question only applies if the item is one of the 50% for which an anchorage configuration verification is required.)                                  | Not Applicable |
| 6. | Based on the above anchorage evaluations, is the anchorage free of potentially adverse seismic conditions?<br><i>The scram water accumulator is an in-line component that is adequately restrained to the CRD/HCU support frame.</i> | Yes            |

**Interaction Effects**

- |    |  |     |
|----|--|-----|
| 7. | Are soft targets free from impact by nearby equipment or structures? | Yes |
|----|--|-----|

Status:  Y  N  U

**Seismic Walkdown Checklist (SWC)**

Equipment ID No.: 2-0305-125-30-11

Equipment Class: (21) Tanks and Heat Exchangers

Equipment Description: SCRAM WATER ACCUMULTOR (30-11 H-3 (South))

8. Are overhead equipment, distribution systems, ceiling tiles and lighting, and masonry block walls not likely to collapse onto the equipment? Yes  
*One end of light supported by a beam clamp oriented incorrectly. Mitigated by deceleration and softening due to power cord. Judged to be acceptable.*
9. Do attached lines have adequate flexibility to avoid damage? Yes
10. Based on the above seismic interaction evaluations, is equipment free of potentially adverse seismic interaction effects? Yes

**Other Adverse Conditions**

11. Have you looked for and found no adverse seismic conditions that could adversely affect the safety functions of the equipment? Yes  
*Tubes in close proximity to gallery bracket. Flexible tubes and gallery braced against lateral translation. Judged to be acceptable.*


**Comments**

Seismic Walkdown Team: J. Griffith & M. Wodarczyk - 8/6/2012

Evaluated by:

 James Griffith

Date: 10/4/2012



Michael Wodarczyk

10/4/2012

**Photos**



Status:  Y  N  U

**Seismic Walkdown Checklist (SWC)**

Equipment ID No.: 2-0305-125-38-59

Equipment Class: (21) Tanks and Heat Exchangers

Equipment Description: SCRAM WATER ACCUMULTOR (38-59 K-15 (North))

Project: Quad Cities 2 SWEL

Location (Bldg, Elev, Room/Area): RB, 595.00 ft, ALL

Manufacturer/Model: \_\_\_\_\_

**Instructions for Completing Checklist**

This checklist may be used to document the results of the Seismic Walkdown of an item of equipment on the SWEL. The space below each of the following questions may be used to record the results of judgments and findings. Additional space is provided at the end of this checklist for documenting other comments.

**Anchorage**

1. Is anchorage configuration verification required (i.e., is the item one of the 50% of SWEL items requiring such verification)? No
  
2. Is the anchorage free of bent, broken, missing or loose hardware? Not Applicable
  
3. Is the anchorage free of corrosion that is more than mild surface oxidation? Not Applicable
  
4. Is the anchorage free of visible cracks in the concrete near the anchors? Not Applicable
  
5. Is the anchorage configuration consistent with plant documentation? (Note: This question only applies if the item is one of the 50% for which an anchorage configuration verification is required.) Not Applicable
  
6. Based on the above anchorage evaluations, is the anchorage free of potentially adverse seismic conditions? Yes  
*The scram water accumulator is an in-line component that is adequately restrained to the CRD/HCU support frame.*

**Interaction Effects**

7. Are soft targets free from impact by nearby equipment or structures? Yes

Status:  Y  N  U

**Seismic Walkdown Checklist (SWC)**

Equipment ID No.: 2-0305-125-38-59

Equipment Class: (21) Tanks and Heat Exchangers

Equipment Description: SCRAM WATER ACCUMULTOR (38-59 K-15 (North))

*Tubes and pipes in close proximity are flexible and judged to be acceptable.*

8. Are overhead equipment, distribution systems, ceiling tiles and lighting, and masonry block walls not likely to collapse onto the equipment? Yes
9. Do attached lines have adequate flexibility to avoid damage? Yes
10. Based on the above seismic interaction evaluations, is equipment free of potentially adverse seismic interaction effects? Yes

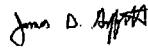
**Other Adverse Conditions**

11. Have you looked for and found no adverse seismic conditions that could adversely affect the safety functions of the equipment? Yes

**Comments**

Seismic Walkdown Team: J. Griffith & M. Wodarczyk - 8/6/2012

Evaluated by:

 James Griffith

Date: 10/4/2012



Michael Wodarczyk

10/4/2012

**Photos**

Status:  Y  N  U

**Seismic Walkdown Checklist (SWC)**

Equipment ID No.: 2-0305-125-42-27

Equipment Class: (21) Tanks and Heat Exchangers

Equipment Description: SCRAM WATER ACCUMULTOR (42-27 L-7 (North))

Project: Quad Cities 2 SWEL

Location (Bldg, Elev, Room/Area): RB, 595.00 ft, ALL

Manufacturer/Model:

**Instructions for Completing Checklist**

This checklist may be used to document the results of the Seismic Walkdown of an item of equipment on the SWEL. The space below each of the following questions may be used to record the results of judgments and findings. Additional space is provided at the end of this checklist for documenting other comments.

**Anchorage**

1. Is anchorage configuration verification required (i.e., is the item one of the 50% of SWEL items requiring such verification)? No
  
2. Is the anchorage free of bent, broken, missing or loose hardware? Not Applicable
  
3. Is the anchorage free of corrosion that is more than mild surface oxidation? Not Applicable
  
4. Is the anchorage free of visible cracks in the concrete near the anchors? Not Applicable
  
5. Is the anchorage configuration consistent with plant documentation? (Note: This question only applies if the item is one of the 50% for which an anchorage configuration verification is required.) Not Applicable
  
6. Based on the above anchorage evaluations, is the anchorage free of potentially adverse seismic conditions? Yes  
*The scram water accumulator is an in-line component that is adequately restrained to the CRD/HCU support frame.*

**Interaction Effects**

7. Are soft targets free from impact by nearby equipment or structures? Yes

Status:  Y  N  U

**Seismic Walkdown Checklist (SWC)**

Equipment ID No.: 2-0305-125-42-27

Equipment Class: (21) Tanks and Heat Exchangers

Equipment Description: SCRAM WATER ACCUMULTOR (42-27 L-7 (North))

*Tubes and pipes in close proximity are flexible and judged to be acceptable.*

8. Are overhead equipment, distribution systems, ceiling tiles and lighting, and masonry block walls not likely to collapse onto the equipment? Yes
9. Do attached lines have adequate flexibility to avoid damage? Yes
10. Based on the above seismic interaction evaluations, is equipment free of potentially adverse seismic interaction effects? Yes

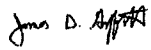
**Other Adverse Conditions**

11. Have you looked for and found no adverse seismic conditions that could adversely affect the safety functions of the equipment? Yes

**Comments**

Seismic Walkdown Team: J. Griffith & M. Wodarczyk - 8/6/2012

Evaluated by:

 James Griffith

Date: 10/4/2012

  
Michael Wodarczyk

10/4/2012

**Photos**

Status:  Y  N  U

**Seismic Walkdown Checklist (SWC)**

Equipment ID No.: 2-0305-126-22-27

Equipment Class: (7) Fluid-Operated Valves

Equipment Description: CRD SCRAM Inlet Valve (22-27 F-7 (South))

Project: Quad Cities 2 SWEL

Location (Bldg, Elev, Room/Area): RB, 595.00 ft, ALL

Manufacturer/Model:

**Instructions for Completing Checklist**

This checklist may be used to document the results of the Seismic Walkdown of an item of equipment on the SWEL. The space below each of the following questions may be used to record the results of judgments and findings. Additional space is provided at the end of this checklist for documenting other comments.

**Anchorage**

1. Is anchorage configuration verification required (i.e., is the item one of the 50% of SWEL items requiring such verification)? No
  
2. Is the anchorage free of bent, broken, missing or loose hardware? Not Applicable
  
3. Is the anchorage free of corrosion that is more than mild surface oxidation? Not Applicable
  
4. Is the anchorage free of visible cracks in the concrete near the anchors? Not Applicable
  
5. Is the anchorage configuration consistent with plant documentation? (Note: This question only applies if the item is one of the 50% for which an anchorage configuration verification is required.) Not Applicable
  
6. Based on the above anchorage evaluations, is the anchorage free of potentially adverse seismic conditions? Yes  
*The scram inlet valve is an in-line component with the operator adequately restrained to the CRD/HCU support frame.*

**Interaction Effects**

7. Are soft targets free from impact by nearby equipment or structures? Yes

Status:  Y  N  U

**Seismic Walkdown Checklist (SWC)**

Equipment ID No.: 2-0305-126-22-27

Equipment Class: (7) Fluid-Operated Valves

Equipment Description: CRD SCRAM Inlet Valve (22-27 F-7 (South))

*Tubes, conduits, and pipes in close proximity are flexible and judged to be acceptable.*

8. Are overhead equipment, distribution systems, ceiling tiles and lighting, and masonry block walls not likely to collapse onto the equipment? Yes  
*One end of light supported by a beam clamp oriented incorrectly. Mitigated by deceleration and softening due to power cord. Judged to be acceptable.*
9. Do attached lines have adequate flexibility to avoid damage? Yes
10. Based on the above seismic interaction evaluations, is equipment free of potentially adverse seismic interaction effects? Yes

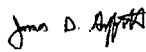
**Other Adverse Conditions**

11. Have you looked for and found no adverse seismic conditions that could adversely affect the safety functions of the equipment? Yes  
*Tubes in close proximity to gallery bracket. Flexible tubes and gallery braced against lateral translation. Judged to be acceptable.*

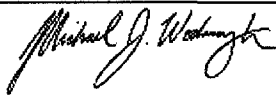
**Comments**

Seismic Walkdown Team: J. Griffith & M. Wodarcyk - 8/6/2012

Evaluated by:

 James Griffith

Date: 10/4/2012

  
Michael Wodarcyk

10/4/2012

**Photos**

Status:  Y  N  U

**Seismic Walkdown Checklist (SWC)**

Equipment ID No.: 2-0305-126-30-11

Equipment Class: (7) Fluid-Operated Valves

Equipment Description: CRD SCRAM Inlet Valve (30-11 H-3 (South))

Project: Quad Cities 2 SWEL

Location (Bldg, Elev, Room/Area): RB, 595.00 ft, ALL

Manufacturer/Model: \_\_\_\_\_

**Instructions for Completing Checklist**

This checklist may be used to document the results of the Seismic Walkdown of an item of equipment on the SWEL. The space below each of the following questions may be used to record the results of judgments and findings. Additional space is provided at the end of this checklist for documenting other comments.

**Anchorage**

1. Is anchorage configuration verification required (i.e., is the item one of the 50% of SWEL items requiring such verification)? No
  
2. Is the anchorage free of bent, broken, missing or loose hardware? Not Applicable
  
3. Is the anchorage free of corrosion that is more than mild surface oxidation? Not Applicable
  
4. Is the anchorage free of visible cracks in the concrete near the anchors? Not Applicable
  
5. Is the anchorage configuration consistent with plant documentation? (Note: This question only applies if the item is one of the 50% for which an anchorage configuration verification is required.) Not Applicable
  
6. Based on the above anchorage evaluations, is the anchorage free of potentially adverse seismic conditions? Yes  
*The scram inlet valve is an in-line component with the operator adequately restrained to the CRD/HCU support frame.*

**Interaction Effects**

7. Are soft targets free from impact by nearby equipment or structures? Yes

Status:  Y  N  U

**Seismic Walkdown Checklist (SWC)**

Equipment ID No.: 2-0305-126-30-11

Equipment Class: (7) Fluid-Operated Valves

Equipment Description: CRD SCRAM Inlet Valve (30-11 H-3 (South))

8. Are overhead equipment, distribution systems, ceiling tiles and lighting, and masonry block walls not likely to collapse onto the equipment? Yes  
*One end of light supported by a beam clamp oriented incorrectly. Mitigated by deceleration and softening due to power cord. Judged to be acceptable.*
9. Do attached lines have adequate flexibility to avoid damage? Yes
10. Based on the above seismic interaction evaluations, is equipment free of potentially adverse seismic interaction effects? Yes

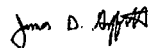
**Other Adverse Conditions**

11. Have you looked for and found no adverse seismic conditions that could adversely affect the safety functions of the equipment? Yes  
*Tubes in close proximity to gallery bracket. Flexible tubes and gallery braced against lateral translation. Judged to be acceptable.*

**Comments**

Seismic Walkdown Team: J. Griffith & M. Wodarczyk - 8/6/2012

Evaluated by:

 James Griffith

Date: 10/4/2012



Michael Wodarczyk

10/4/2012

**Photos**



Status:  Y  N  U

**Seismic Walkdown Checklist (SWC)**

Equipment ID No.: 2-0305-126-38-59

Equipment Class: (7) Fluid-Operated Valves

Equipment Description: CRD SCRAM Inlet Valve (38-59 K-15 (North))

Project: Quad Cities 2 SWEL

Location (Bldg, Elev, Room/Area): RB, 595.00 ft, ALL

Manufacturer/Model:

**Instructions for Completing Checklist**

This checklist may be used to document the results of the Seismic Walkdown of an item of equipment on the SWEL. The space below each of the following questions may be used to record the results of judgments and findings. Additional space is provided at the end of this checklist for documenting other comments.

**Anchorage**

1. Is anchorage configuration verification required (i.e., is the item one of the 50% of SWEL items requiring such verification)? No
  
2. Is the anchorage free of bent, broken, missing or loose hardware? Not Applicable
  
3. Is the anchorage free of corrosion that is more than mild surface oxidation? Not Applicable
  
4. Is the anchorage free of visible cracks in the concrete near the anchors? Not Applicable
  
5. Is the anchorage configuration consistent with plant documentation? (Note: This question only applies if the item is one of the 50% for which an anchorage configuration verification is required.) Not Applicable
  
6. Based on the above anchorage evaluations, is the anchorage free of potentially adverse seismic conditions? Yes  
*The scram inlet valve is an in-line component with the operator adequately restrained to the CRD/HCU support frame.*

**Interaction Effects**

7. Are soft targets free from impact by nearby equipment or structures? Yes

Status:  Y  N  U

**Seismic Walkdown Checklist (SWC)**

Equipment ID No.: 2-0305-126-38-59

Equipment Class: (7) Fluid-Operated Valves

Equipment Description: CRD SCRAM Inlet Valve (38-59 K-15 (North))

*Tubes and pipes in close proximity are flexible and judged to be acceptable.*

8. Are overhead equipment, distribution systems, ceiling tiles and lighting, and masonry block walls not likely to collapse onto the equipment? Yes
9. Do attached lines have adequate flexibility to avoid damage? Yes
10. Based on the above seismic interaction evaluations, is equipment free of potentially adverse seismic interaction effects? Yes

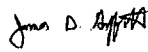
**Other Adverse Conditions**

11. Have you looked for and found no adverse seismic conditions that could adversely affect the safety functions of the equipment? Yes

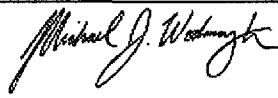
**Comments**

Seismic Walkdown Team: J. Griffith & M. Wodarczyk - 8/6/2012

Evaluated by:

 James Griffith

Date: 10/4/2012

  
Michael Wodarczyk

10/4/2012

**Photos**

Status:  Y  N  U

**Seismic Walkdown Checklist (SWC)**

Equipment ID No.: 2-0305-126-42-27

Equipment Class: (7) Fluid-Operated Valves

Equipment Description: CRD SCRAM Inlet Valve (42-27 L-7 (North))

Project: Quad Cities 2 SWEL

Location (Bldg, Elev, Room/Area): RB, 595.00 ft, ALL

Manufacturer/Model:

**Instructions for Completing Checklist**

This checklist may be used to document the results of the Seismic Walkdown of an item of equipment on the SWEL. The space below each of the following questions may be used to record the results of judgments and findings. Additional space is provided at the end of this checklist for documenting other comments.

**Anchorage**

1. Is anchorage configuration verification required (i.e., is the item one of the 50% of SWEL items requiring such verification)? No
  
2. Is the anchorage free of bent, broken, missing or loose hardware? Not Applicable
  
3. Is the anchorage free of corrosion that is more than mild surface oxidation? Not Applicable
  
4. Is the anchorage free of visible cracks in the concrete near the anchors? Not Applicable
  
5. Is the anchorage configuration consistent with plant documentation? (Note: This question only applies if the item is one of the 50% for which an anchorage configuration verification is required.) Not Applicable
  
6. Based on the above anchorage evaluations, is the anchorage free of potentially adverse seismic conditions? Yes  
*The scram inlet valve is an in-line component with the operator adequately restrained to the CRD/HCU support frame.*

**Interaction Effects**

7. Are soft targets free from impact by nearby equipment or structures? Yes

Status:  Y  N  U

**Seismic Walkdown Checklist (SWC)**

Equipment ID No.: 2-0305-126-42-27

Equipment Class: (7) Fluid-Operated Valves

Equipment Description: CRD SCRAM Inlet Valve (42-27 L-7 (North))

*Tubes and pipes in close proximity are flexible and judged to be acceptable.*

8. Are overhead equipment, distribution systems, ceiling tiles and lighting, and masonry block walls not likely to collapse onto the equipment? Yes
9. Do attached lines have adequate flexibility to avoid damage? Yes
10. Based on the above seismic interaction evaluations, is equipment free of potentially adverse seismic interaction effects? Yes

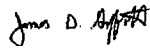
**Other Adverse Conditions**

11. Have you looked for and found no adverse seismic conditions that could adversely affect the safety functions of the equipment? Yes

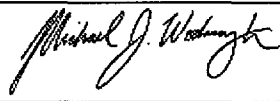
**Comments**

Seismic Walkdown Team: J. Griffith & M. Wodarcyk - 8/6/2012

Evaluated by:

 James Griffith

Date: 10/4/2012

  
Michael Wodarcyk

10/4/2012

**Photos**