

Status:  Y  N  U

**Seismic Walkdown Checklist (SWC)**

Equipment ID No.: 902-33

Equipment Class: (20) Instrumentation and Control Panels and Cabinets

Equipment Description: PANEL

Project: Quad Cities 2 SWEL

Location (Bldg, Elev, Room/Area): SB, 595.00 ft, ALL

Manufacturer/Model:

**Instructions for Completing Checklist**

This checklist may be used to document the results of the Seismic Walkdown of an item of equipment on the SWEL. The space below each of the following questions may be used to record the results of judgments and findings. Additional space is provided at the end of this checklist for documenting other comments.

**Anchorage**

1. Is anchorage configuration verification required (i.e., is the item one of the 50% of SWEL items requiring such verification)? Yes
  
2. Is the anchorage free of bent, broken, missing or loose hardware? Yes
  
3. Is the anchorage free of corrosion that is more than mild surface oxidation? Yes
  
4. Is the anchorage free of visible cracks in the concrete near the anchors? Yes
  
5. Is the anchorage configuration consistent with plant documentation? (Note: This question only applies if the item is one of the 50% for which an anchorage configuration verification is required.) Yes
  
6. Based on the above anchorage evaluations, is the anchorage free of potentially adverse seismic conditions? Yes

Status:  Y  N  U

**Seismic Walkdown Checklist (SWC)**

Equipment ID No.: 902-33

Equipment Class: (20) Instrumentation and Control Panels and Cabinets

Equipment Description: PANEL

**Interaction Effects**

7. Are soft targets free from impact by nearby equipment or structures? Yes  
*Ductwork stiffeners trimmed back to provide adequate clearance to panel; judged to be acceptable.*
8. Are overhead equipment, distribution systems, ceiling tiles and lighting, and masonry block walls not likely to collapse onto the equipment? Yes
9. Do attached lines have adequate flexibility to avoid damage? Yes
10. Based on the above seismic interaction evaluations, is equipment free of potentially adverse seismic interaction effects? Yes

**Other Adverse Conditions**

11. Have you looked for and found no adverse seismic conditions that could adversely affect the safety functions of the equipment? Yes  
*All panel doors were opened. No adverse conditions were observed.*  
*Door on adjacent cabinet 902-47 is slightly askew at bottom. However, door is adequately latched and judged to be acceptable.*

**Comments**

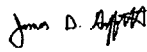
SEWS Anchorage Notes:

Panel anchored by one 3/8" CEA shell near each corner.

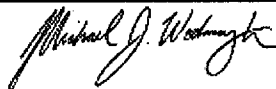
\*\*\*\*\*

Seismic Walkdown Team: J. Griffith & M. Wodarczyk - 8/7/2012

Evaluated by:

 James Griffith

Date: 10/16/2012



Michael Wodarczyk

10/16/2012

Status:  Y  N  U

**Seismic Walkdown Checklist (SWC)**

Equipment ID No.: 902-33

Equipment Class: (20) Instrumentation and Control Panels and Cabinets

Equipment Description: PANEL

**Photos**



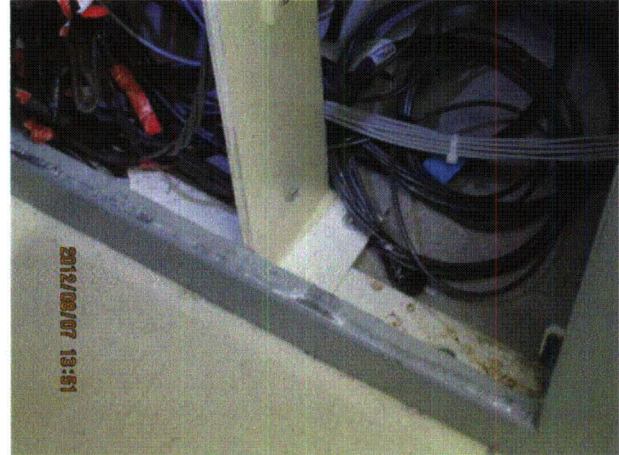
20120807-QuadCities-2 279



20120807-QuadCities-2 280



20120807-QuadCities-2 281



20120807-QuadCities-2 282

Status:  Y  N  U

**Seismic Walkdown Checklist (SWC)**

Equipment ID No.: 902-33

Equipment Class: (20) Instrumentation and Control Panels and Cabinets

Equipment Description: PANEL



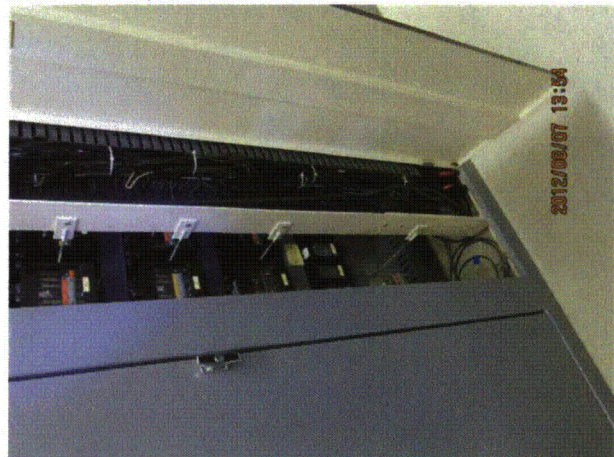
20120807-QuadCities-2 283



20120807-QuadCities-2 284



20120807-QuadCities-2 285



20120807-QuadCities-2 286

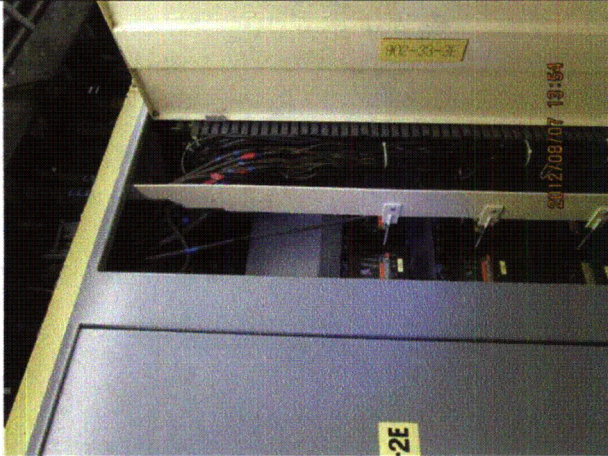
Status:  Y  N  U

**Seismic Walkdown Checklist (SWC)**

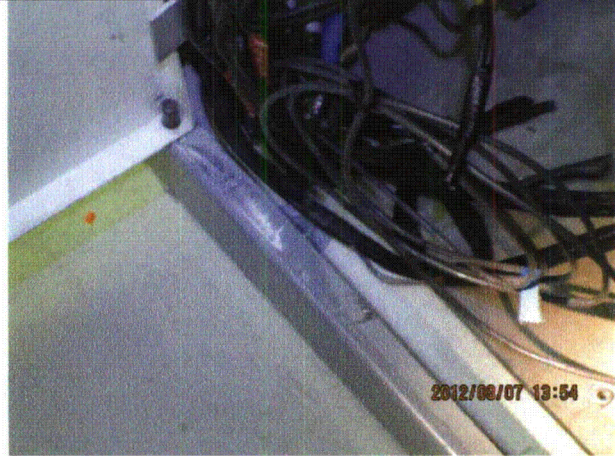
Equipment ID No.: 902-33

Equipment Class: (20) Instrumentation and Control Panels and Cabinets

Equipment Description: PANEL



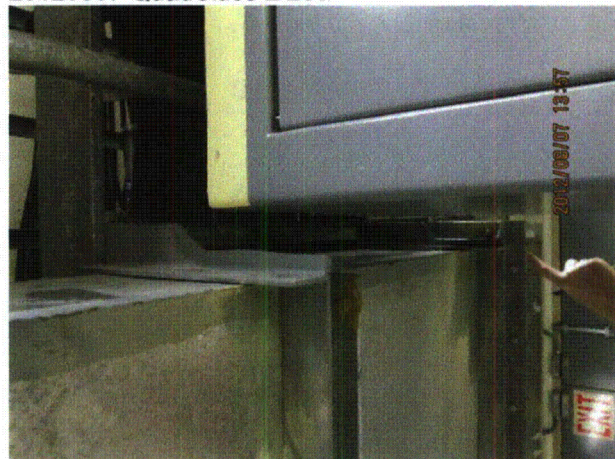
20120807-QuadCities-2 287



20120807-QuadCities-2 288



20120807-QuadCities-2 289



20120807-QuadCities-2 290

Status:  Y  N  U

**Seismic Walkdown Checklist (SWC)**

Equipment ID No.: 902-33

Equipment Class: (20) Instrumentation and Control Panels and Cabinets

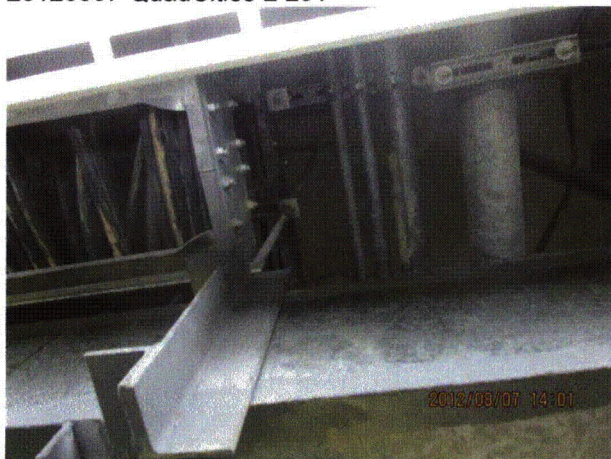
Equipment Description: PANEL



20120807-QuadCities-2 291



20120807-QuadCities-2 292



20120807-QuadCities-2 293



20120807-QuadCities-2 294

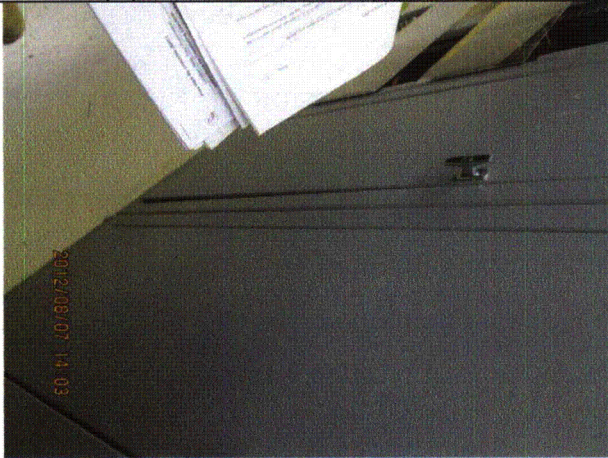
Status:  Y  N  U

**Seismic Walkdown Checklist (SWC)**

Equipment ID No.: 902-33

Equipment Class: (20) Instrumentation and Control Panels and Cabinets

Equipment Description: PANEL



20120807-QuadCities-2 295



20120807-QuadCities-2 296



20120807-QuadCities-2 297

Status:  Y  N  U

**Seismic Walkdown Checklist (SWC)**

Equipment ID No.: 902-39

Equipment Class: (20) Instrumentation and Control Panels and Cabinets

Equipment Description: PANEL

Project: Quad Cities 2 SWEL

Location (Bldg, Elev, Room/Area): SB, 595.00 ft, ALL

Manufacturer/Model:

**Instructions for Completing Checklist**

This checklist may be used to document the results of the Seismic Walkdown of an item of equipment on the SWEL. The space below each of the following questions may be used to record the results of judgments and findings. Additional space is provided at the end of this checklist for documenting other comments.

**Anchorage**

1. Is anchorage configuration verification required (i.e., is the item one of the 50% of SWEL items requiring such verification)? Yes
  
2. Is the anchorage free of bent, broken, missing or loose hardware? Yes
  
3. Is the anchorage free of corrosion that is more than mild surface oxidation? Yes
  
4. Is the anchorage free of visible cracks in the concrete near the anchors? Yes
  
5. Is the anchorage configuration consistent with plant documentation? (Note: This question only applies if the item is one of the 50% for which an anchorage configuration verification is required.) Yes
  
6. Based on the above anchorage evaluations, is the anchorage free of potentially adverse seismic conditions? Yes



Status:  Y  N  U

**Seismic Walkdown Checklist (SWC)**

Equipment ID No.: 902-39

Equipment Class: (20) Instrumentation and Control Panels and Cabinets

Equipment Description: PANEL

**Interaction Effects**

7. Are soft targets free from impact by nearby equipment or structures? Yes  
*Top of Panel 902-39 bolted to adjacent Panel 2202-70A.*
8. Are overhead equipment, distribution systems, ceiling tiles and lighting, and masonry block walls not likely to collapse onto the equipment? Yes  
*One chain disconnected at each of 3 light support points. One chain engaged at each location. Judged to be acceptable.*
9. Do attached lines have adequate flexibility to avoid damage? Yes
10. Based on the above seismic interaction evaluations, is equipment free of potentially adverse seismic interaction effects? Yes

**Other Adverse Conditions**

11. Have you looked for and found no adverse seismic conditions that could adversely affect the safety functions of the equipment? Yes  
*All panel doors were opened. No adverse conditions were observed.*

**Comments**

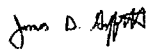
SEWS Anchorage Notes:

Panel anchored by one 3/4" (flat-flat on bolt head) CEA in each corner.

\*\*\*\*\*

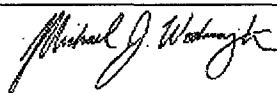
Seismic Walkdown Team: J. Griffith & M. Wodarcyk - 8/7/2012

Evaluated by:



James Griffith

Date: 10/4/2012



Michael Wodarcyk

10/4/2012

Status:  Y  N  U

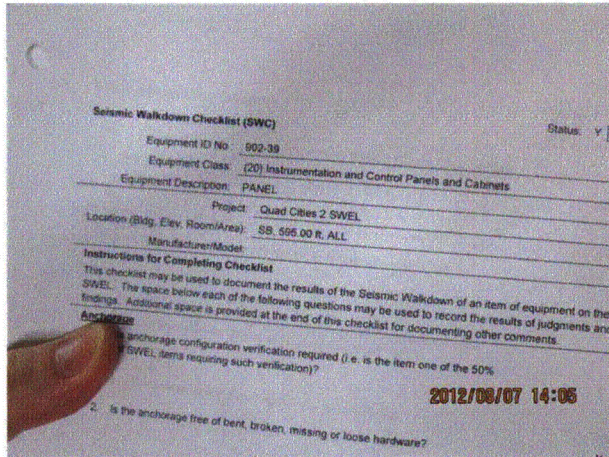
**Seismic Walkdown Checklist (SWC)**

Equipment ID No.: 902-39

Equipment Class: (20) Instrumentation and Control Panels and Cabinets

Equipment Description: PANEL

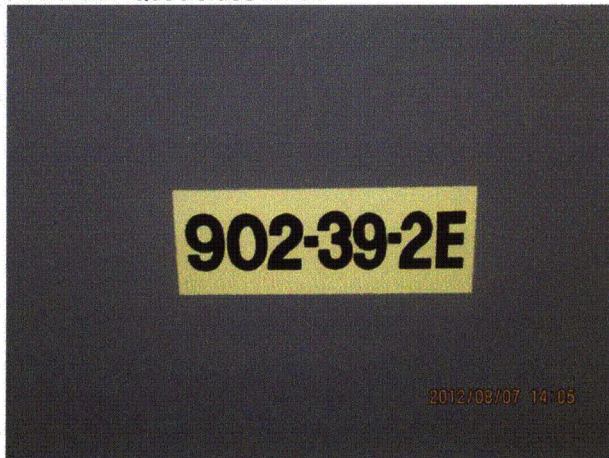
**Photos**



20120807-QuadCities-2 298



20120807-QuadCities-2 299



20120807-QuadCities-2 300



20120807-QuadCities-2 301

Status:  Y  N  U

**Seismic Walkdown Checklist (SWC)**

Equipment ID No.: 902-39

Equipment Class: (20) Instrumentation and Control Panels and Cabinets

Equipment Description: PANEL



20120807-QuadCities-2 302



20120807-QuadCities-2 303



20120807-QuadCities-2 304



20120807-QuadCities-2 305

Status:  Y  N  U

**Seismic Walkdown Checklist (SWC)**

Equipment ID No.: 902-39

Equipment Class: (20) Instrumentation and Control Panels and Cabinets

Equipment Description: PANEL



20120807-QuadCities-2 306



20120807-QuadCities-2 307



20120807-QuadCities-2 308



20120807-QuadCities-2 309

Status:  Y  N  U

**Seismic Walkdown Checklist (SWC)**

Equipment ID No.: 902-39

Equipment Class: (20) Instrumentation and Control Panels and Cabinets

Equipment Description: PANEL



20120807-QuadCities-2 310



20120807-QuadCities-2 311



20120807-QuadCities-2 312



20120807-QuadCities-2 313

Status:  Y  N  U

**Seismic Walkdown Checklist (SWC)**

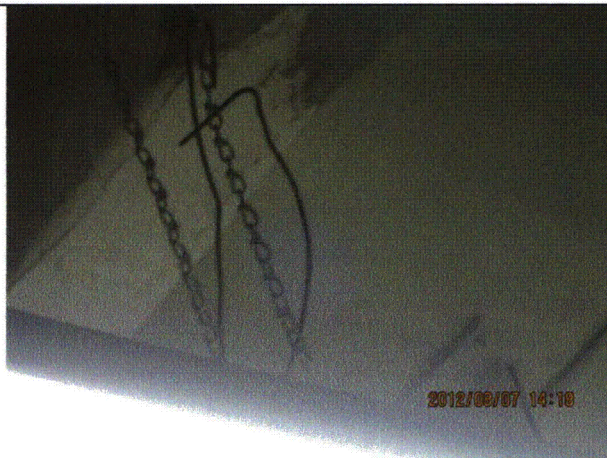
Equipment ID No.: 902-39

Equipment Class: (20) Instrumentation and Control Panels and Cabinets

Equipment Description: PANEL



20120807-QuadCities-2 314



20120807-QuadCities-2 315



20120807-QuadCities-2 316



20120807-QuadCities-2 317

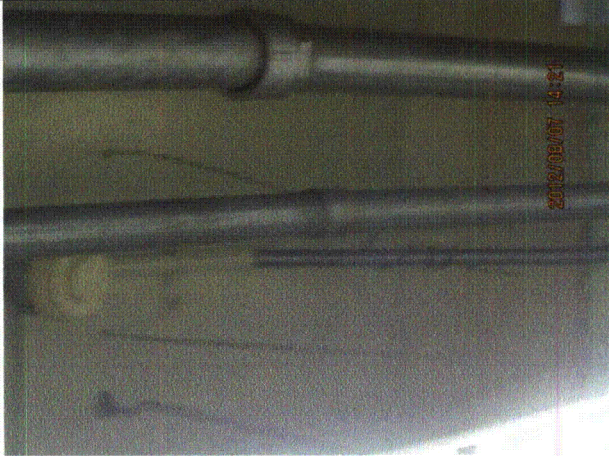
Status:  Y  N  U

**Seismic Walkdown Checklist (SWC)**

Equipment ID No.: 902-39

Equipment Class: (20) Instrumentation and Control Panels and Cabinets

Equipment Description: PANEL



20120807-QuadCities-2 318



20120807-QuadCities-2 319



20120807-QuadCities-2 320



20120807-QuadCities-2 321

Status:  Y  N  U

**Seismic Walkdown Checklist (SWC)**

Equipment ID No.: 902-5

Equipment Class: (20) Instrumentation and Control Panels and Cabinets

Equipment Description: PANEL

Project: Quad Cities 2 SWEL

Location (Bldg, Elev, Room/Area): SB, 623.00 ft, ALL

Manufacturer/Model:

**Instructions for Completing Checklist**

This checklist may be used to document the results of the Seismic Walkdown of an item of equipment on the SWEL. The space below each of the following questions may be used to record the results of judgments and findings. Additional space is provided at the end of this checklist for documenting other comments.

**Anchorage**

1. Is anchorage configuration verification required (i.e., is the item one of the 50% of SWEL items requiring such verification)? Yes
  
2. Is the anchorage free of bent, broken, missing or loose hardware? Yes
  
3. Is the anchorage free of corrosion that is more than mild surface oxidation? Yes
  
4. Is the anchorage free of visible cracks in the concrete near the anchors? Yes
  
5. Is the anchorage configuration consistent with plant documentation? (Note: This question only applies if the item is one of the 50% for which an anchorage configuration verification is required.) Yes
  
6. Based on the above anchorage evaluations, is the anchorage free of potentially adverse seismic conditions? Yes  
*Viewed 4 anchors (front clips) of 14 total. Remaining anchors could not be viewed due to cabling and limitations on access. Anchors viewed matched documentation, therefore it is reasonable to conclude that the anchors match plant documentation without further verification.*



Status:  Y  N  U

**Seismic Walkdown Checklist (SWC)**

Equipment ID No.: 902-5

Equipment Class: (20) Instrumentation and Control Panels and Cabinets

Equipment Description: PANEL

**Interaction Effects**

- |                                                                                                                                                                                                                                                                         |     |
|-------------------------------------------------------------------------------------------------------------------------------------------------------------------------------------------------------------------------------------------------------------------------|-----|
| 7. Are soft targets free from impact by nearby equipment or structures?                                                                                                                                                                                                 | Yes |
| 8. Are overhead equipment, distribution systems, ceiling tiles and lighting, and masonry block walls not likely to collapse onto the equipment?<br><i>Sheet metal ceiling inside cabinet and drop-panel ceiling outside cabinet prevent overhead access/visibility.</i> | Yes |
| 9. Do attached lines have adequate flexibility to avoid damage?                                                                                                                                                                                                         | Yes |
| 10. Based on the above seismic interaction evaluations, is equipment free of potentially adverse seismic interaction effects?                                                                                                                                           | Yes |

**Other Adverse Conditions**

- |                                                                                                                                                                                                                   |     |
|-------------------------------------------------------------------------------------------------------------------------------------------------------------------------------------------------------------------|-----|
| 11. Have you looked for and found no adverse seismic conditions that could adversely affect the safety functions of the equipment?<br><i>Back of control panel was open. No adverse conditions were observed.</i> | Yes |
|-------------------------------------------------------------------------------------------------------------------------------------------------------------------------------------------------------------------|-----|

**Comments**

SEWS Anchorage Notes:

Anchorage: Panel 902-5 has 14 welded or bolted friction clips (4 on front, 5 in center and 5 on back) attaching base channel to embedded steel.

\*\*\*\*\*

Seismic Walkdown Team: J. Griffith & M. Wodarczyk - 8/7/2012

No photos permitted per Operations.

Status:  Y  N  U

**Seismic Walkdown Checklist (SWC)**

Equipment ID No.: 902-5

Equipment Class: (20) Instrumentation and Control Panels and Cabinets

Equipment Description: PANEL

Evaluated by:

*James D. Griffith*

James Griffith

Date: 10/4/2012

*Michael J. Wodarczyk*

Michael Wodarczyk

10/4/2012

**Photos**

Status:  Y  N  U

**Seismic Walkdown Checklist (SWC)**

Equipment ID No.: 902-61

Equipment Class: (14) Distribution Panels

Equipment Description: PNL, CONTROL

Project: Quad Cities 2 SWEL

Location (Bldg, Elev, Room/Area): SB, 609.00 ft, ALL

Manufacturer/Model:

**Instructions for Completing Checklist**

This checklist may be used to document the results of the Seismic Walkdown of an item of equipment on the SWEL. The space below each of the following questions may be used to record the results of judgments and findings. Additional space is provided at the end of this checklist for documenting other comments.

**Anchorage**

1. Is anchorage configuration verification required (i.e., is the item one of the 50% of SWEL items requiring such verification)? Yes
  
2. Is the anchorage free of bent, broken, missing or loose hardware? Yes
  
3. Is the anchorage free of corrosion that is more than mild surface oxidation? Yes
  
4. Is the anchorage free of visible cracks in the concrete near the anchors? Yes
  
5. Is the anchorage configuration consistent with plant documentation? (Note: This question only applies if the item is one of the 50% for which an anchorage configuration verification is required.) Yes
  
6. Based on the above anchorage evaluations, is the anchorage free of potentially adverse seismic conditions? Yes

Status:  Y  N  U

**Seismic Walkdown Checklist (SWC)**

Equipment ID No.: 902-61

Equipment Class: (14) Distribution Panels

Equipment Description: PNL, CONTROL

**Interaction Effects**

- |                                                                                                                                                 |     |
|-------------------------------------------------------------------------------------------------------------------------------------------------|-----|
| 7. Are soft targets free from impact by nearby equipment or structures?                                                                         | Yes |
| 8. Are overhead equipment, distribution systems, ceiling tiles and lighting, and masonry block walls not likely to collapse onto the equipment? | Yes |
| 9. Do attached lines have adequate flexibility to avoid damage?                                                                                 | Yes |
| 10. Based on the above seismic interaction evaluations, is equipment free of potentially adverse seismic interaction effects?                   | Yes |

**Other Adverse Conditions**

- |                                                                                                                                    |     |
|------------------------------------------------------------------------------------------------------------------------------------|-----|
| 11. Have you looked for and found no adverse seismic conditions that could adversely affect the safety functions of the equipment? | Yes |
|------------------------------------------------------------------------------------------------------------------------------------|-----|

**Comments**

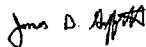
SEWS Anchorage Notes:

Anchorage: Panel is mounted on 2 legs. Each leg is anchored by eight 3/8" CEA.

\*\*\*\*\*

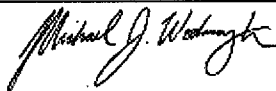
Seismic Walkdown Team: J. Griffith & M. Wodarczyk - 8/7/2012

Evaluated by:



James Griffith

Date: 10/4/2012



Michael Wodarczyk

10/4/2012

Status:  Y  N  U

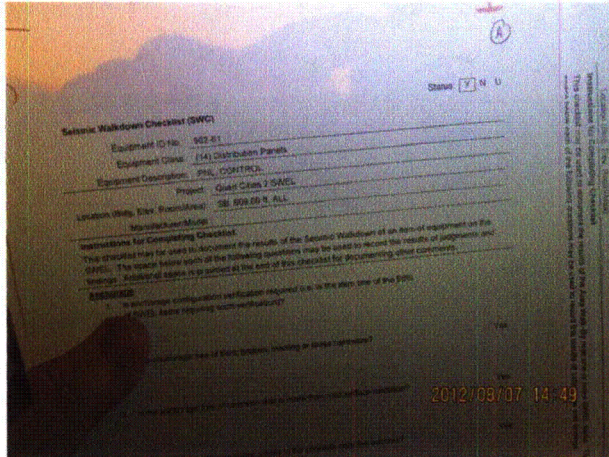
**Seismic Walkdown Checklist (SWC)**

Equipment ID No.: 902-61

Equipment Class: (14) Distribution Panels

Equipment Description: PNL, CONTROL

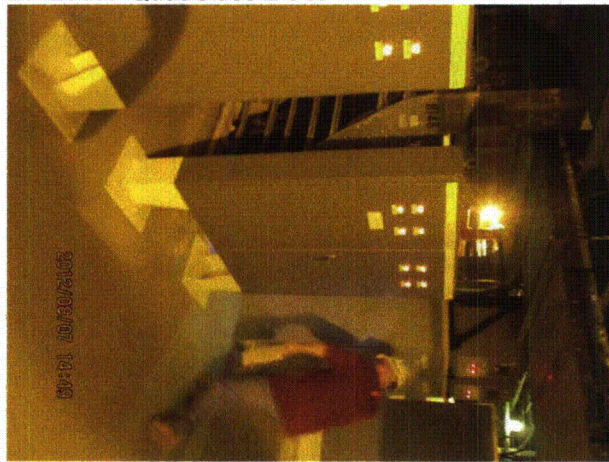
**Photos**



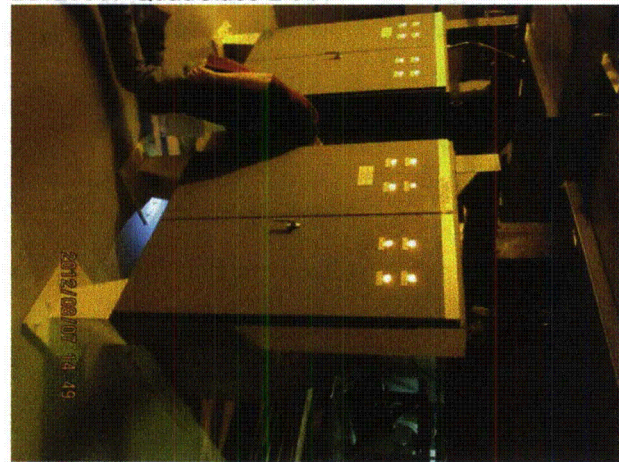
20120807-QuadCities-2 343



20120807-QuadCities-2 344



20120807-QuadCities-2 345



20120807-QuadCities-2 346

Status:  Y  N  U

**Seismic Walkdown Checklist (SWC)**

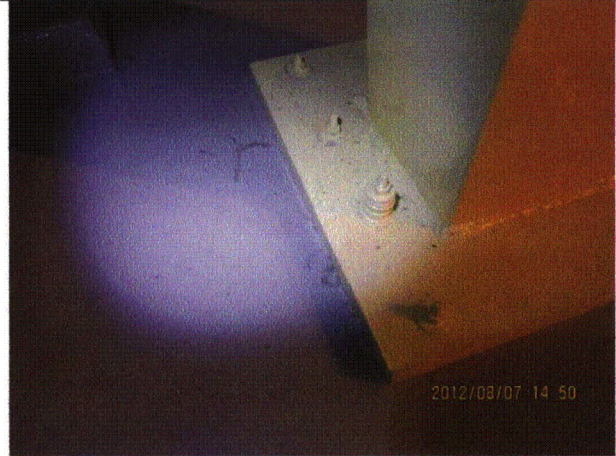
Equipment ID No.: 902-61

Equipment Class: (14) Distribution Panels

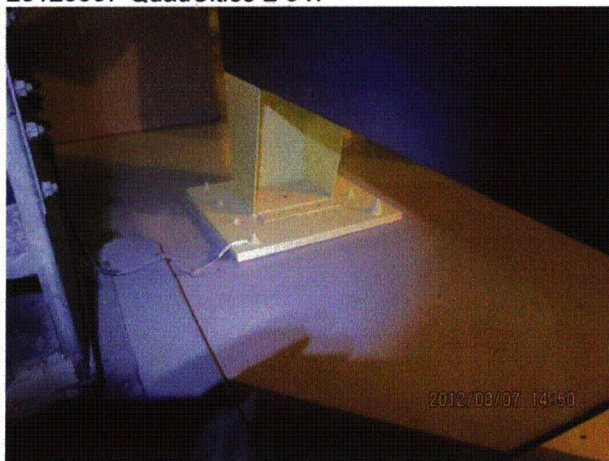
Equipment Description: PNL, CONTROL



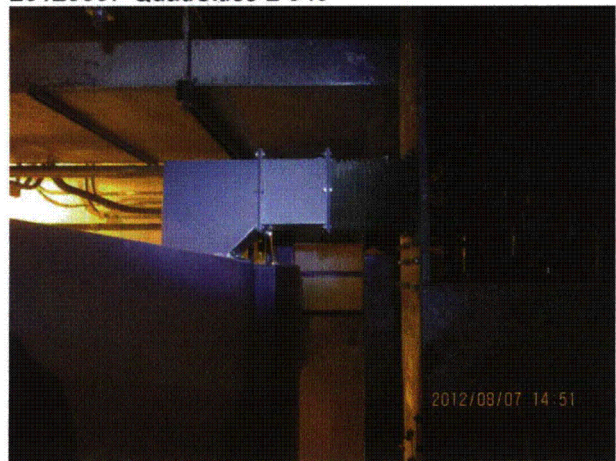
20120807-QuadCities-2 347



20120807-QuadCities-2 348



20120807-QuadCities-2 349



20120807-QuadCities-2 350

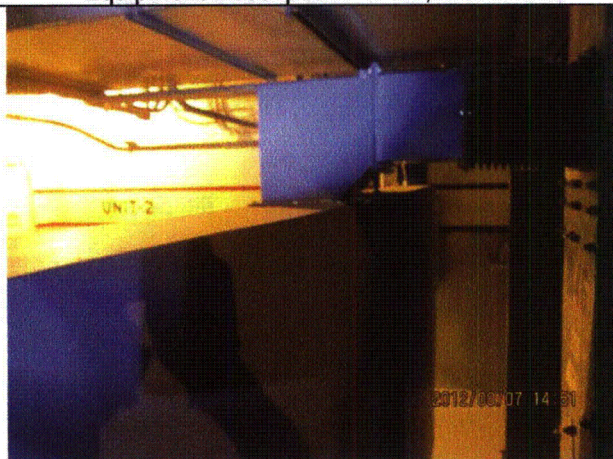
Status:  Y  N  U

**Seismic Walkdown Checklist (SWC)**

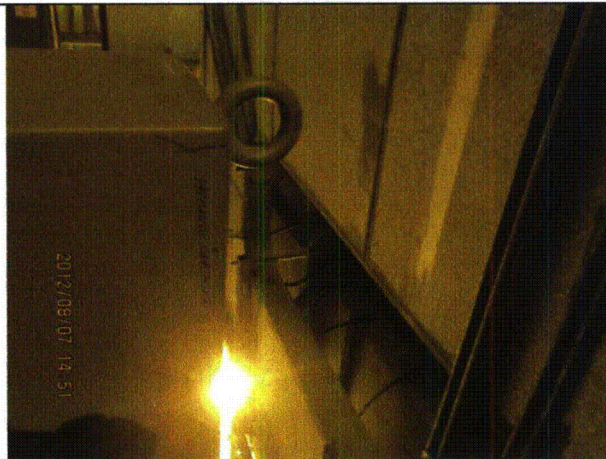
Equipment ID No.: 902-61

Equipment Class: (14) Distribution Panels

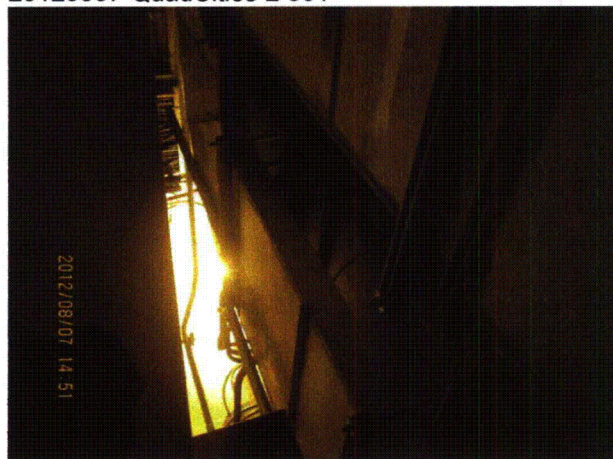
Equipment Description: PNL, CONTROL



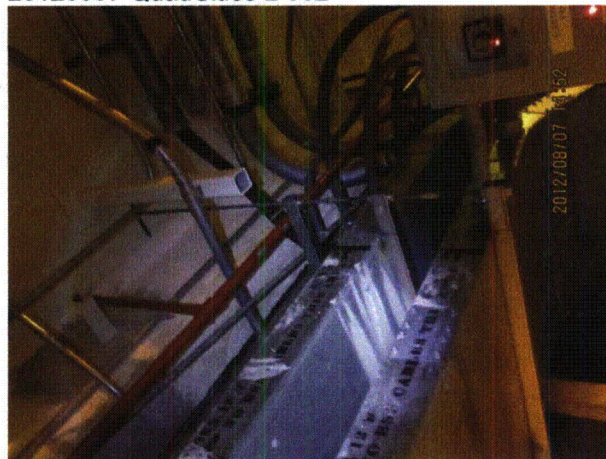
20120807-QuadCities-2 351



20120807-QuadCities-2 352



20120807-QuadCities-2 353



20120807-QuadCities-2 354

Status:  Y  N  U

**Seismic Walkdown Checklist (SWC)**

Equipment ID No.: 902-62

Equipment Class: (14) Distribution Panels

Equipment Description: PNL, CONTROL

Project: Quad Cities 2 SWEL

Location (Bldg, Elev, Room/Area): SB, 609.00 ft, ALL

Manufacturer/Model:

**Instructions for Completing Checklist**

This checklist may be used to document the results of the Seismic Walkdown of an item of equipment on the SWEL. The space below each of the following questions may be used to record the results of judgments and findings. Additional space is provided at the end of this checklist for documenting other comments.

**Anchorage**

1. Is anchorage configuration verification required (i.e., is the item one of the 50% of SWEL items requiring such verification)? Yes
  
2. Is the anchorage free of bent, broken, missing or loose hardware? Yes  
*Stacked washers under 1 anchor judged to be acceptable.*
  
3. Is the anchorage free of corrosion that is more than mild surface oxidation? Yes
  
4. Is the anchorage free of visible cracks in the concrete near the anchors? Yes
  
5. Is the anchorage configuration consistent with plant documentation? (Note: This question only applies if the item is one of the 50% for which an anchorage configuration verification is required.) Yes
  
6. Based on the above anchorage evaluations, is the anchorage free of potentially adverse seismic conditions? Yes



Status:  Y  N  U

**Seismic Walkdown Checklist (SWC)**

Equipment ID No.: 902-62

Equipment Class: (14) Distribution Panels

Equipment Description: PNL, CONTROL

**Interaction Effects**

7. Are soft targets free from impact by nearby equipment or structures? Yes
8. Are overhead equipment, distribution systems, ceiling tiles and lighting, and masonry block walls not likely to collapse onto the equipment? Yes
9. Do attached lines have adequate flexibility to avoid damage? Yes
10. Based on the above seismic interaction evaluations, is equipment free of potentially adverse seismic interaction effects? Yes

**Other Adverse Conditions**

11. Have you looked for and found no adverse seismic conditions that could adversely affect the safety functions of the equipment? Yes

**Comments**

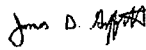
SEWS Anchorage Notes:

Panel is mounted on 2 legs. Each leg is anchored to floor by eight 3/8" CEA.

\*\*\*\*\*

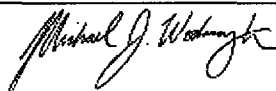
Seismic Walkdown Team: J. Griffith & M. Wodarczyk - 8/7/2012

Evaluated by:



James Griffith

Date: 10/4/2012



Michael Wodarczyk

10/4/2012

Status:  Y  N  U

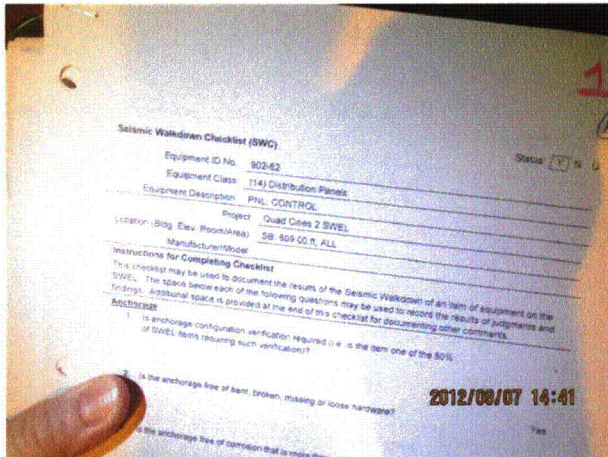
**Seismic Walkdown Checklist (SWC)**

Equipment ID No.: 902-62

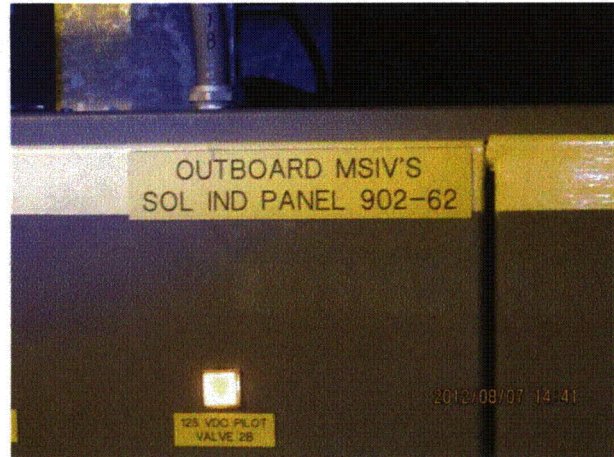
Equipment Class: (14) Distribution Panels

Equipment Description: PNL, CONTROL

**Photos**



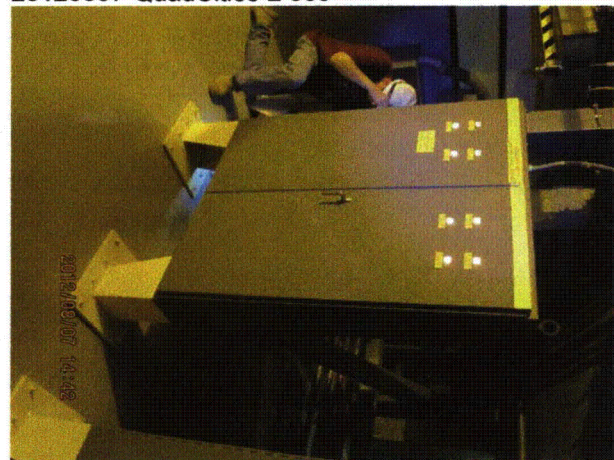
20120807-QuadCities-2 332



20120807-QuadCities-2 333



20120807-QuadCities-2 334



20120807-QuadCities-2 335

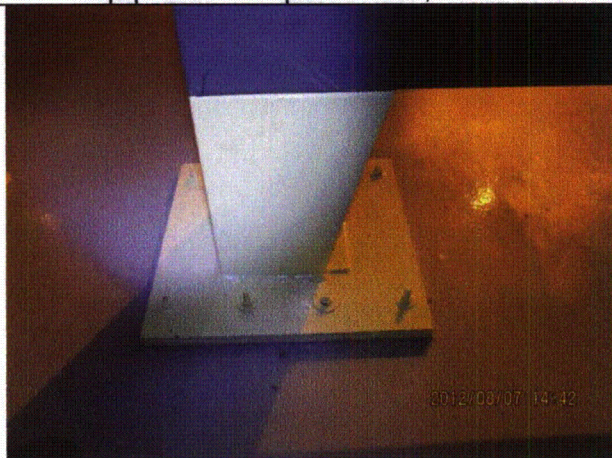
Status:  Y  N  U

**Seismic Walkdown Checklist (SWC)**

Equipment ID No.: 902-62

Equipment Class: (14) Distribution Panels

Equipment Description: PNL, CONTROL



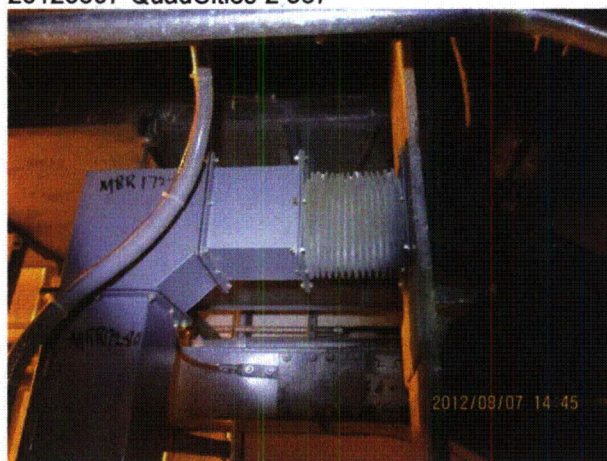
20120807-QuadCities-2 336



20120807-QuadCities-2 337



20120807-QuadCities-2 338



20120807-QuadCities-2 339

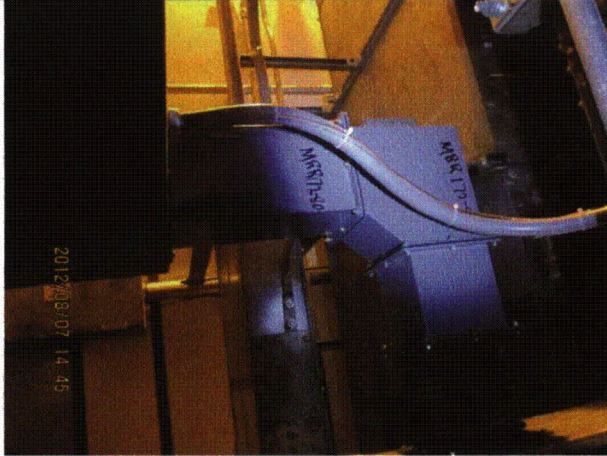
Status:  Y  N  U

**Seismic Walkdown Checklist (SWC)**

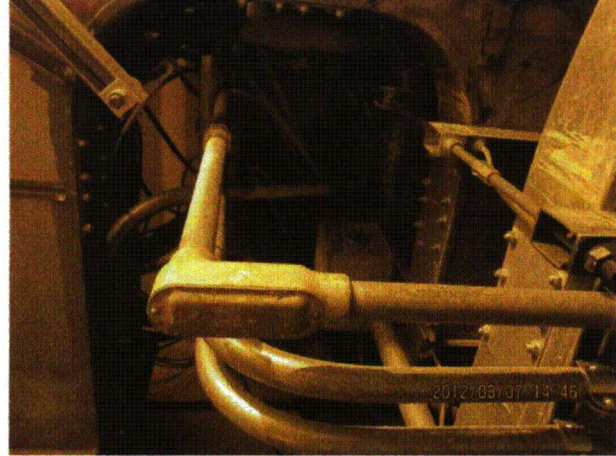
Equipment ID No.: 902-62

Equipment Class: (14) Distribution Panels

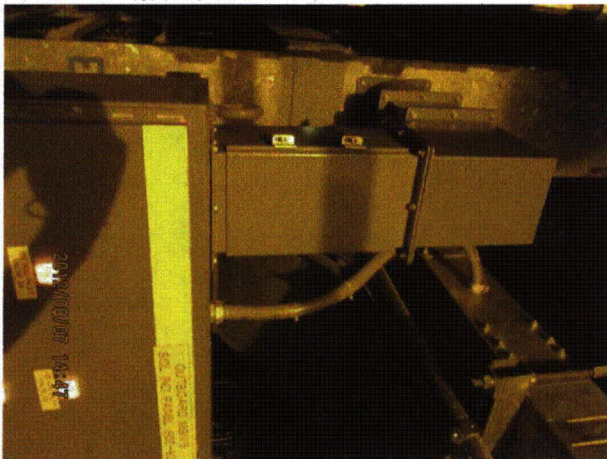
Equipment Description: PNL, CONTROL



20120807-QuadCities-2 340



20120807-QuadCities-2 341



20120807-QuadCities-2 342

# D

## Area Walk-By Checklists (AWCs)

---

Table D-1 provides the building, elevation, and location of each area as well as a list of SWEL items associated with each area, and page numbers of each Area Walk-By Checklist.

**Table D-1. Summary of Area Walk-By Checklists**

AWC-U2-xx	BUILDING	ELEVATION	LOCATION	BASE COMPONENT ID	PAGE
1	Turbine	647.5		2-7100, 2-7100-28	D - 4
2	Reactor	623		2-7800-28-1B, 2-7800-29-1	D - 12
3	Reactor	623		2-8801A-AO	D - 17
4	Reactor	623		250VDC MCC 2A	D - 21
5	Reactor	623		2202-32	D - 25
6	Reactor	595		2-7800-28295	D - 29
7	Reactor	595	North CRD/HCU Bank	2-0305-125-38-59, 2-0305-125-42-27, 2-0305-126-38-59, 2-0305-126-42-27, 2-0305-127-38-59, 2-0305-127-42-27, 2-0305-38-59, 2-0305-42-27, 2-0302-19A, 2-0302-20A, 2-0302-21A, 2202-7	D - 34
8	Reactor	595	South CRD/HCU Bank	2-0305-125-22-27, 2-0305-125-30-11, 2-0305-126-22-27, 2-0305-126-30-11, 2-0305-127-22-27, 2-0305-127-30-11, 2-0305-22-27, 2-0305-30-11, 2202-8, 2-1601-57-MO	D - 42
9	Turbine	639		2252-86, 2-6705-23-1	D - 48
10	Turbine	639		2252-87	D - 54
11	Turbine	615		2-7800-28-2	D - 60
12	Turbine	615	Battery Charger Room	250VDC MCC 2, 2-8300-2, 2-8350	D - 66
13	Turbine	628	Battery Room	125VDC BATT 2, 250VDC BATT 2	D - 70
14	Service	595	Aux. Electric Equipment Room	902-33, 902-39	D - 74
15	Service	609	Cable Spread Room	902-61, 902-62, 2202-73A	D - 77
16	Reactor	647	Fuel Pool Cooling Area	2-1601-23-AO, 2-1601-24-AO	D - 81
17	Diesel	595	1/2 DG Diesel Oil Day Tank Room	1/2-5202	D - 83
18	Diesel	595	1/2 Diesel Generator Room	1/2-4600A, 1/2-4604, 1/2-4605, 1/2-4699-226, 1/2-5203, 1/2-5727, 1/2-6601, 1/2-6654, 1/2-6661A, 2212-125, 2212-32	D - 86
19	Turbine	547		2-1001-65C	D - 99
20	Turbine	547		2-3903, 2-5745A, 2-5749	D - 104
21	Reactor	554	HPCI Room	2-2301-14-MO, 2-2301-29-AO, 2-2301-31-AO, 2-2301-35-MO, 2-2301-3-MO, 2-2301-49-MO, 2-2301-6-MO, 2-2302, 2-2304, 2-2308, 2-2310, 2-2399-15-PCV, 2-5747, 2202-29A	D - 107
22	Reactor	554	2A Core Spray Room	2-5748A	D - 118
23	Reactor	554	2A RHR Corner Room Basement Level	2-1001-165A, 2-1001-16A, 2202-59A, 2-1001-145A, 2-1002A	D - 122

AWC-U2-xx	BUILDING	ELEVATION	LOCATION	BASE COMPONENT ID	PAGE
24	Reactor	580	2A RHR Corner Room Gallery Level	2-1001-166A, 2-1003A	D - 128
25	Reactor	554	Torus	2-0302-22A, 2-1001-22A, 2-1001-29A, 2-1001-34A, 2-1601-21-AO, 2-2001-3-AO	D - 133
26	Service	623	Control Room	902-3, 902-5	D - 148
OUT AGE	---	---	---	2-1301-17-MO, 2-2301-8-MO, 2-0203-0001AH25, 2-0203-1A-1, 2-1301-16-MO, 2-0203-3A, 2-0203-4A, 2-1201-2, 2-1201-5, 2-0220-45	

Status:  Y  N  U

**Area Walk-By Checklist (AWC)**

Location (Bldg, Elev, Room/Area): AWC-U2-01

---

**Instructions for Completing Checklist**

This checklist may be used to document the results of the Area Walk-By near one or more SWEL items. The space below each of the following questions may be used to record the results of judgments and findings. Additional space is provided at the end of this checklist for documenting other comments.

---

1. Does anchorage of equipment in the area appear to be free of potentially adverse seismic conditions (if visible without necessarily opening cabinets)? Yes
  
  2. Does anchorage of equipment in the area appear to be free of significant degraded conditions? Yes
  
  3. Based on a visual inspection from the floor, do the cable/conduit raceways and HVAC ducting appear to be free of potentially adverse seismic conditions (e.g., condition of supports is adequate and fill conditions of cable trays appear to be inside acceptable limits)? Yes
  
  4. Does it appear that the area is free of potentially adverse seismic spatial interactions with other equipment in the area (e.g., ceiling tiles and lighting)? Yes  
*Overhead light fixtures judged to be acceptable. Swinging fixtures would only strike robust targets.*  
*Masonry wall near Switchgear 29 is well-restrained and judged to be acceptable.*
  5. Does it appear that the area is free of potentially adverse seismic interactions that could cause flooding or spray in the area? Yes  
*Threaded fire piping well-supported and judged to be acceptable.*
  
  6. Does it appear that the area is free of potentially adverse seismic interactions that could cause a fire in the area? Yes
  
  7. Does it appear that the area is free of potentially adverse seismic interactions associated with housekeeping practices, storage of portable equipment, and temporary installations (e.g., scaffolding, lead shielding)? Yes  
*Storage issue corrected during walk-by. See IR 1400948.*
-



Status:  Y  N  U

**Area Walk-By Checklist (AWC)**

Location (Bldg, Elev, Room/Area): AWC-U2-01

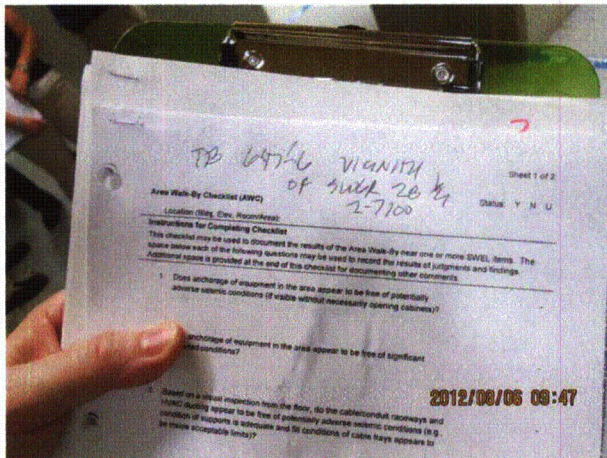
8. Have you looked for and found no other seismic conditions that could adversely affect the safety functions of the equipment in the area? Yes

**Comments**

Seismic Walkdown Team: J. Griffith & M. Wodarczyk - 8/6/2012

Evaluated by: James D. Griffith James Griffith Date: 10/4/2012  
Michael J. Wodarczyk Michael Wodarczyk 10/4/2012

**Photos**



20120806-QuadCities-2 049



20120806-QuadCities-2 050

Status:  Y  N  U

**Area Walk-By Checklist (AWC)**

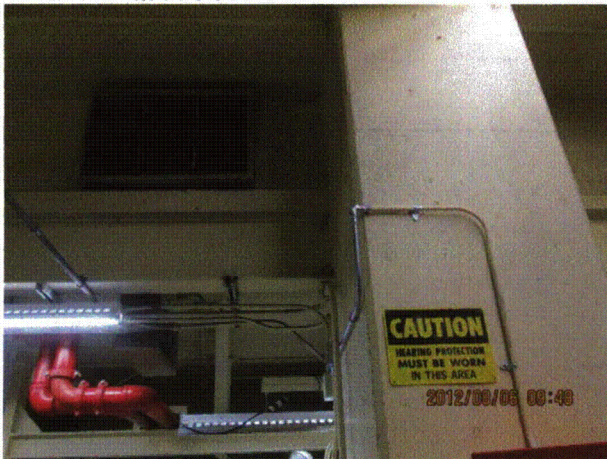
Location (Bldg, Elev, Room/Area): AWC-U2-01



20120806-QuadCities-2 051



20120806-QuadCities-2 052



20120806-QuadCities-2 053



20120806-QuadCities-2 054

Status:  Y  N  U

**Area Walk-By Checklist (AWC)**

Location (Bldg, Elev, Room/Area): AWC-U2-01



20120806-QuadCities-2 055



20120806-QuadCities-2 056



20120806-QuadCities-2 057



20120806-QuadCities-2 058

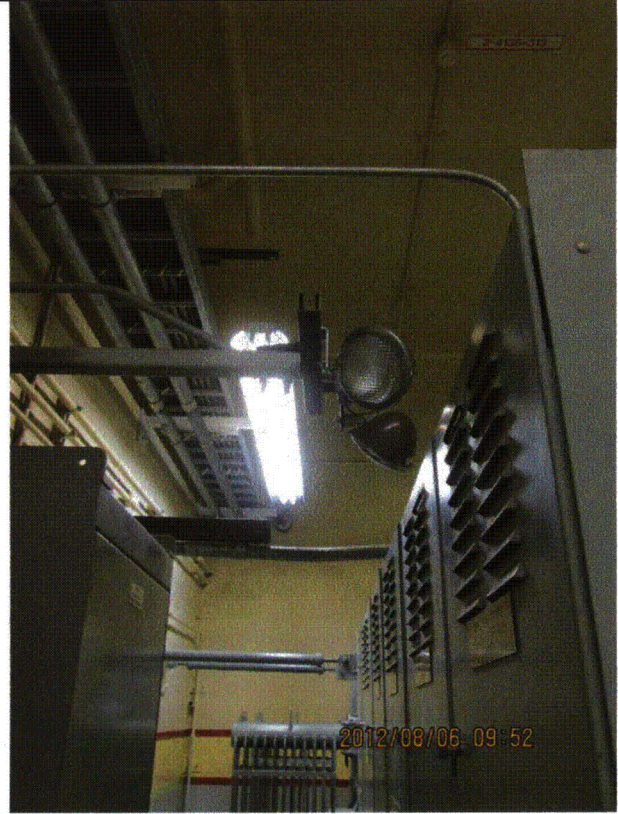
Status:  Y  N  U

**Area Walk-By Checklist (AWC)**

Location (Bldg, Elev, Room/Area): AWC-U2-01



20120806-QuadCities-2 059



20120806-QuadCities-2 060

Status:  Y  N  U

**Area Walk-By Checklist (AWC)**

Location (Bldg, Elev, Room/Area): AWC-U2-01



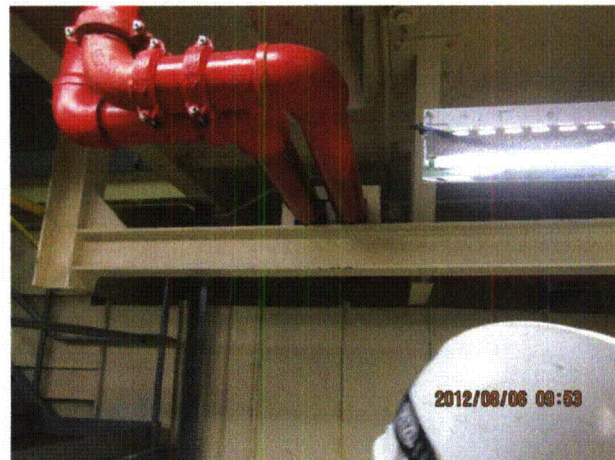
20120806-QuadCities-2 061



20120806-QuadCities-2 062



20120806-QuadCities-2 063

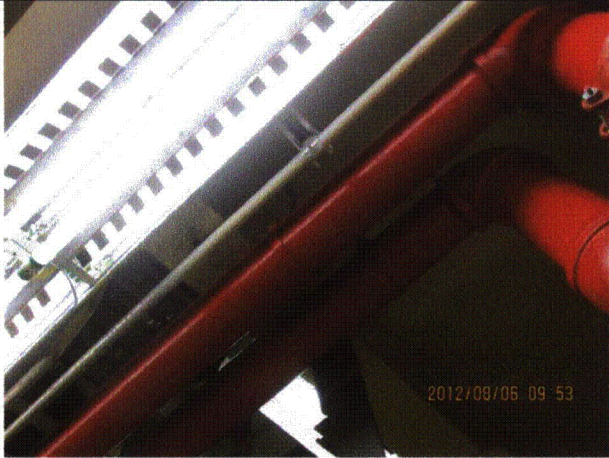


20120806-QuadCities-2 064

Status:  Y  N  U

**Area Walk-By Checklist (AWC)**

Location (Bldg, Elev, Room/Area): AWC-U2-01



20120806-QuadCities-2 065



20120806-QuadCities-2 066



20120806-QuadCities-2 067



20120806-QuadCities-2 068



20120806-QuadCities-2 069

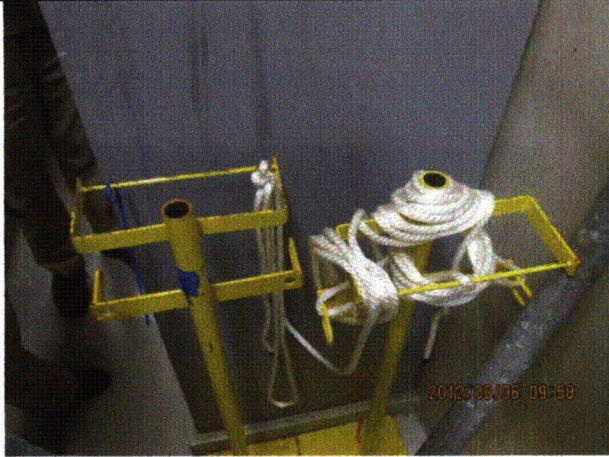


20120806-QuadCities-2 070

Status:  Y  N  U

**Area Walk-By Checklist (AWC)**

Location (Bldg, Elev, Room/Area): AWC-U2-01



20120806-QuadCities-2 071



20120806-QuadCities-2 072



20120806-QuadCities-2 073

Status:  Y  N  U

### Area Walk-By Checklist (AWC)

Location (Bldg, Elev, Room/Area): AWC-U2-02

---

#### Instructions for Completing Checklist

This checklist may be used to document the results of the Area Walk-By near one or more SWEL items. The space below each of the following questions may be used to record the results of judgments and findings. Additional space is provided at the end of this checklist for documenting other comments.

---

1. Does anchorage of equipment in the area appear to be free of potentially adverse seismic conditions (if visible without necessarily opening cabinets)? Yes
  
  2. Does anchorage of equipment in the area appear to be free of significant degraded conditions? Yes
  
  3. Based on a visual inspection from the floor, do the cable/conduit raceways and HVAC ducting appear to be free of potentially adverse seismic conditions (e.g., condition of supports is adequate and fill conditions of cable trays appear to be inside acceptable limits)? Yes  
*Minor bends in pipe support rod hangers judged to be acceptable.*
  
  4. Does it appear that the area is free of potentially adverse seismic spatial interactions with other equipment in the area (e.g., ceiling tiles and lighting)? Yes  
*Overhead light fixture with an open S-hook. Hard targets mitigate effect of fixture; judged to be acceptable. See IR 1397870.*
  
  5. Does it appear that the area is free of potentially adverse seismic interactions that could cause flooding or spray in the area? Yes  
*Fire piping is either welded pipe or well-supported threaded pipe and is judged to be acceptable.*
  
  6. Does it appear that the area is free of potentially adverse seismic interactions that could cause a fire in the area? Yes
  
  7. Does it appear that the area is free of potentially adverse seismic interactions associated with housekeeping practices, storage of portable equipment, and temporary installations (e.g., scaffolding, lead shielding)? Yes  
*Storage issue corrected during walk-by. See IR 1400948.*
-



Status:  Y  N  U

**Area Walk-By Checklist (AWC)**

Location (Bldg, Elev, Room/Area): AWC-U2-02

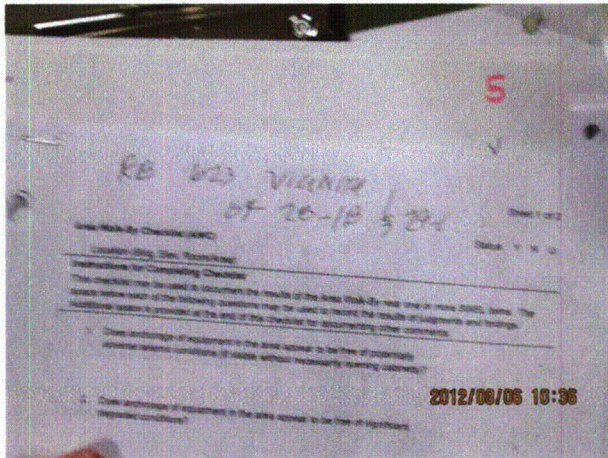
8. Have you looked for and found no other seismic conditions that could adversely affect the safety functions of the equipment in the area? Yes

**Comments**

Seismic Walkdown Team: J. Griffith & M. Wodarczyk - 8/6/2012

Evaluated by: James D. Griffith James Griffith Date: 10/4/2012  
Michael J. Wodarczyk Michael Wodarczyk 10/4/2012

**Photos**



20120806-QuadCities-2 126

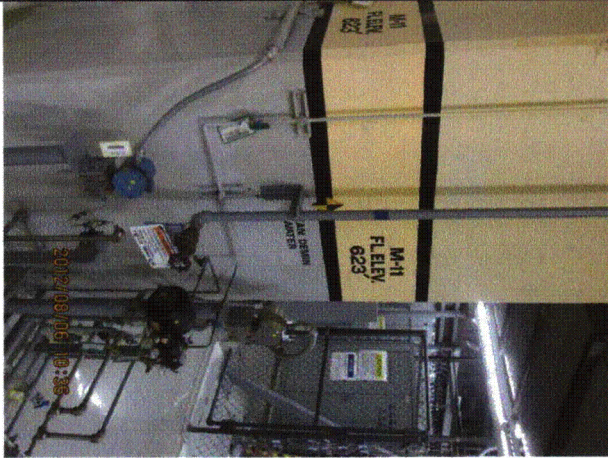


20120806-QuadCities-2 127

Status:  Y  N  U

**Area Walk-By Checklist (AWC)**

Location (Bldg, Elev, Room/Area): AWC-U2-02



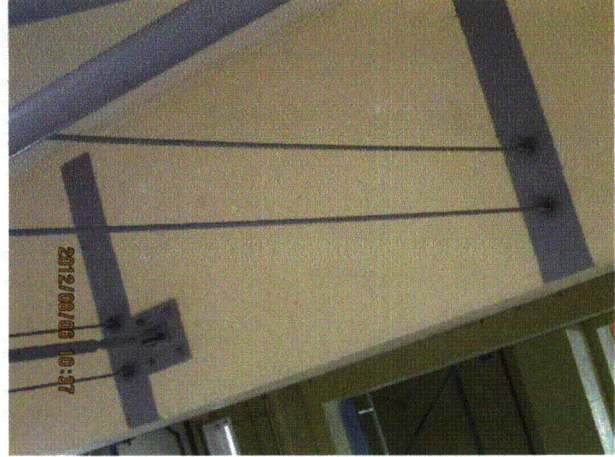
20120806-QuadCities-2 128



20120806-QuadCities-2 129



20120806-QuadCities-2 130



20120806-QuadCities-2 131



20120806-QuadCities-2 132



20120806-QuadCities-2 133

Status:  Y  N  U

Area Walk-By Checklist (AWC)

Location (Bldg, Elev, Room/Area): AWC-U2-02



20120806-QuadCities-2 134



20120806-QuadCities-2 135



20120806-QuadCities-2 136



20120806-QuadCities-2 138

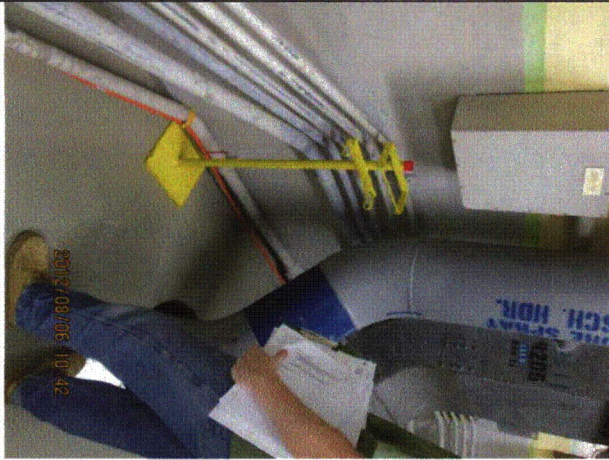


20120806-QuadCities-2 139

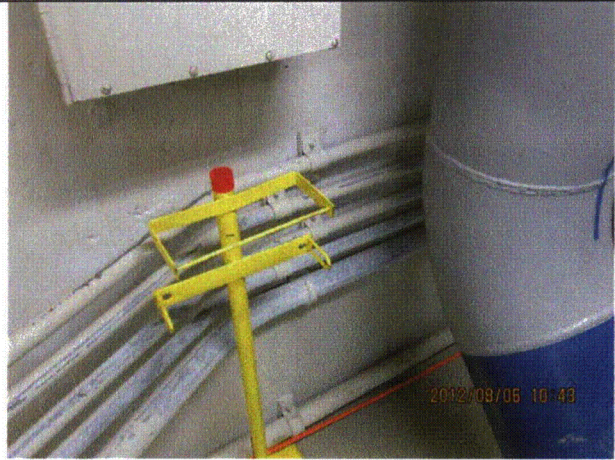
Status:  Y  N  U

**Area Walk-By Checklist (AWC)**

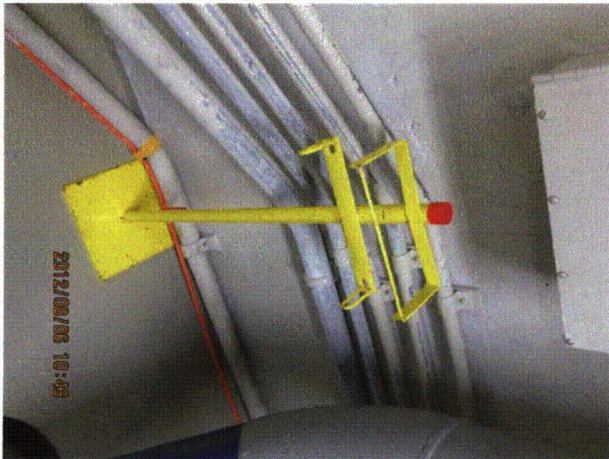
Location (Bldg, Elev, Room/Area): AWC-U2-02



20120806-QuadCities-2 140



20120806-QuadCities-2 141



20120806-QuadCities-2 142

Status:  Y  N  U

**Area Walk-By Checklist (AWC)**

Location (Bldg, Elev, Room/Area): AWC-U2-03

---

**Instructions for Completing Checklist**

This checklist may be used to document the results of the Area Walk-By near one or more SWEL items. The space below each of the following questions may be used to record the results of judgments and findings. Additional space is provided at the end of this checklist for documenting other comments.

---

1. Does anchorage of equipment in the area appear to be free of potentially adverse seismic conditions (if visible without necessarily opening cabinets)? Yes
  
  2. Does anchorage of equipment in the area appear to be free of significant degraded conditions? Yes
  
  3. Based on a visual inspection from the floor, do the cable/conduit raceways and HVAC ducting appear to be free of potentially adverse seismic conditions (e.g., condition of supports is adequate and fill conditions of cable trays appear to be inside acceptable limits)? Yes  
*Minor bends in support rods judged to be acceptable.*
  
  4. Does it appear that the area is free of potentially adverse seismic spatial interactions with other equipment in the area (e.g., ceiling tiles and lighting)? Yes  
*Solenoid valve associated with 2-8801A, B, and C touches solid pipe insulation. Valves fail closed upon loss of air per System Engineering. Judged to be acceptable. See IR 1397616.*
  
  5. Does it appear that the area is free of potentially adverse seismic interactions that could cause flooding or spray in the area? Yes
  
  6. Does it appear that the area is free of potentially adverse seismic interactions that could cause a fire in the area? Yes  
*Gas bottles adequately contained. One horizontal chain has open S-hook at end but is taught; hook cannot "jump off" and is judged to be acceptable. See IR 1397868.*
  
  7. Does it appear that the area is free of potentially adverse seismic interactions associated with housekeeping practices, storage of portable equipment, and temporary installations (e.g., scaffolding, lead shielding)? Yes
-

Status:  Y  N  U

**Area Walk-By Checklist (AWC)**

Location (Bldg, Elev, Room/Area): AWC-U2-03

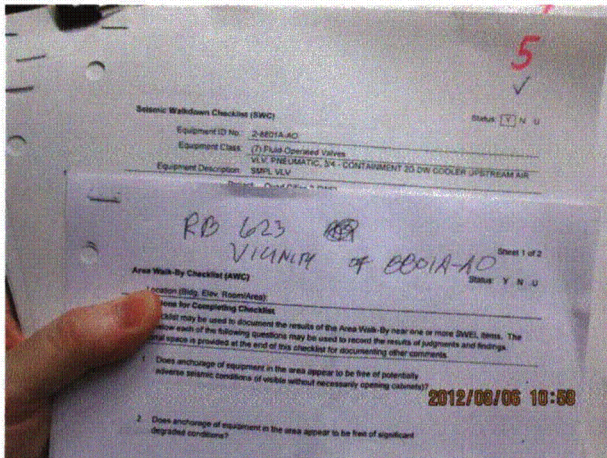
8. Have you looked for and found no other seismic conditions that could adversely affect the safety functions of the equipment in the area? Yes

**Comments**

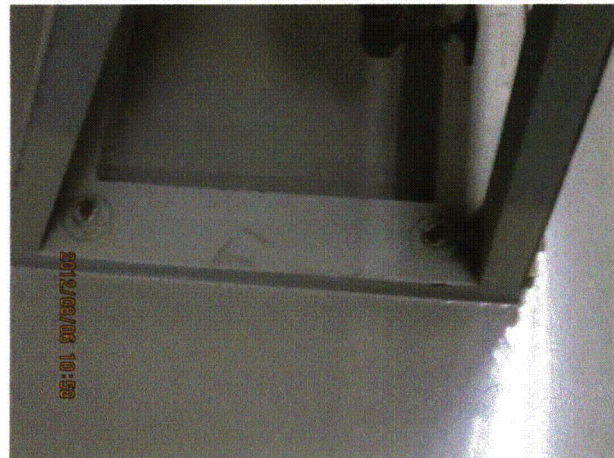
Seismic Walkdown Team: J. Griffith & M. Wodarczyk - 8/6/2012

Evaluated by: James D. Griffith James Griffith Date: 10/4/2012  
Michael J. Wodarczyk Michael Wodarczyk 10/4/2012

**Photos**



20120806-QuadCities-2 174



20120806-QuadCities-2 175

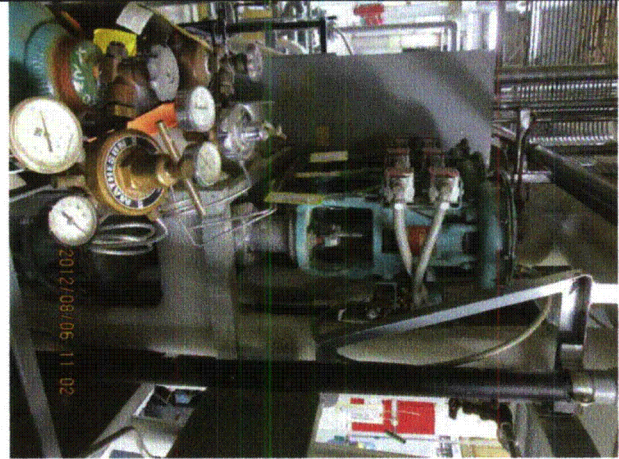
Status:  Y  N  U

**Area Walk-By Checklist (AWC)**

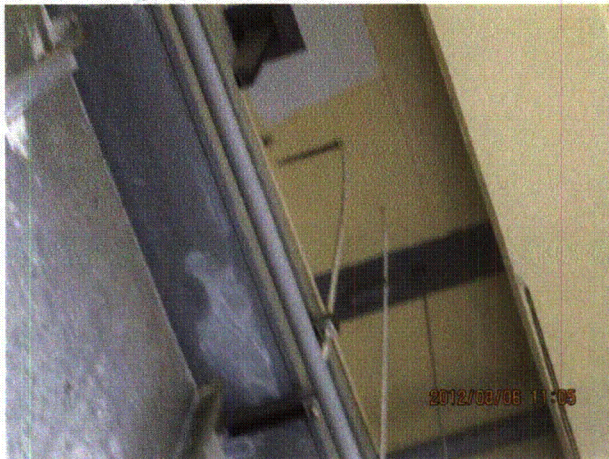
Location (Bldg, Elev, Room/Area): AWC-U2-03



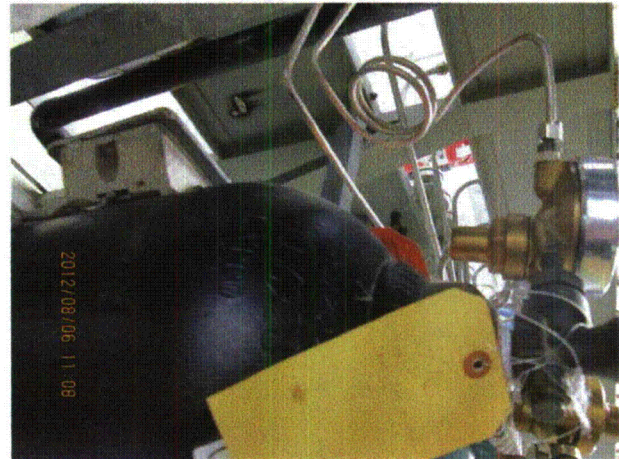
20120806-QuadCities-2 176



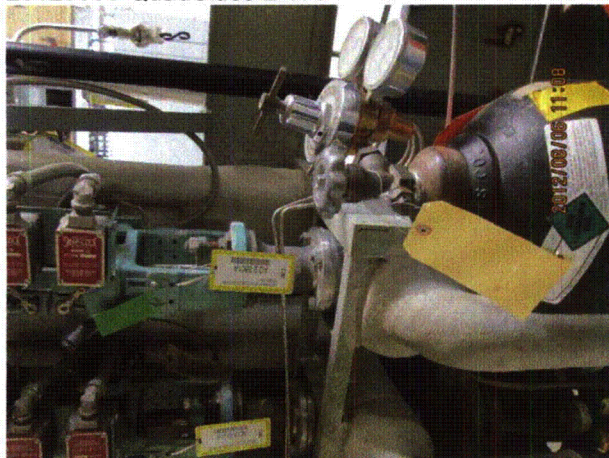
20120806-QuadCities-2 177



20120806-QuadCities-2 178



20120806-QuadCities-2 179



20120806-QuadCities-2 180



20120806-QuadCities-2 181

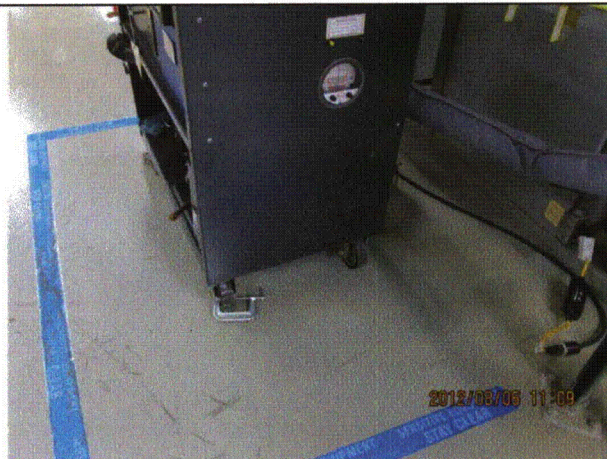
Status:  Y  N  U

**Area Walk-By Checklist (AWC)**

Location (Bldg, Elev, Room/Area): AWC-U2-03



20120806-QuadCities-2 182



20120806-QuadCities-2 183



20120806-QuadCities-2 184



20120806-QuadCities-2 185



Status:  Y  N  U

### Area Walk-By Checklist (AWC)

Location (Bldg, Elev, Room/Area): AWC-U2-04

---

#### Instructions for Completing Checklist

This checklist may be used to document the results of the Area Walk-By near one or more SWEL items. The space below each of the following questions may be used to record the results of judgments and findings. Additional space is provided at the end of this checklist for documenting other comments.

---

1. Does anchorage of equipment in the area appear to be free of potentially adverse seismic conditions (if visible without necessarily opening cabinets)? Yes
  
  2. Does anchorage of equipment in the area appear to be free of significant degraded conditions? Yes  
*2 fence base plates missing each missing 1 of 4 anchors; judged to be acceptable.*
  
  3. Based on a visual inspection from the floor, do the cable/conduit raceways and HVAC ducting appear to be free of potentially adverse seismic conditions (e.g., condition of supports is adequate and fill conditions of cable trays appear to be inside acceptable limits)? Yes  
*Minor bends in rod hangers judged to be acceptable.*
  
  4. Does it appear that the area is free of potentially adverse seismic spatial interactions with other equipment in the area (e.g., ceiling tiles and lighting)? Yes
  
  5. Does it appear that the area is free of potentially adverse seismic interactions that could cause flooding or spray in the area? Yes  
*Welded piping only.*
  
  6. Does it appear that the area is free of potentially adverse seismic interactions that could cause a fire in the area? Yes
  
  7. Does it appear that the area is free of potentially adverse seismic interactions associated with housekeeping practices, storage of portable equipment, and temporary installations (e.g., scaffolding, lead shielding)? Yes
-

Status:  Y  N  U

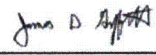
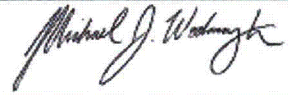
**Area Walk-By Checklist (AWC)**

Location (Bldg, Elev, Room/Area): AWC-U2-04

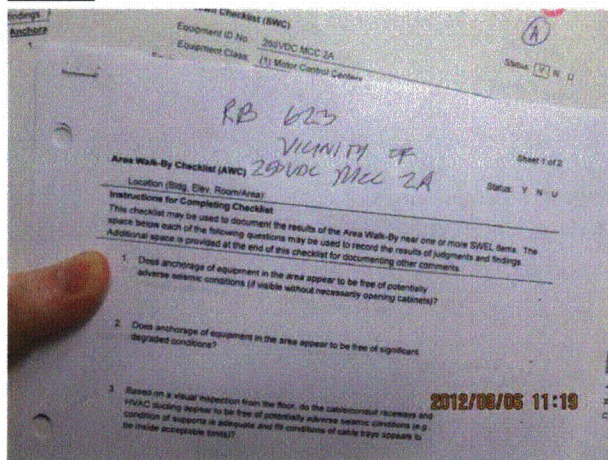
8. Have you looked for and found no other seismic conditions that could adversely affect the safety functions of the equipment in the area? Yes

**Comments**

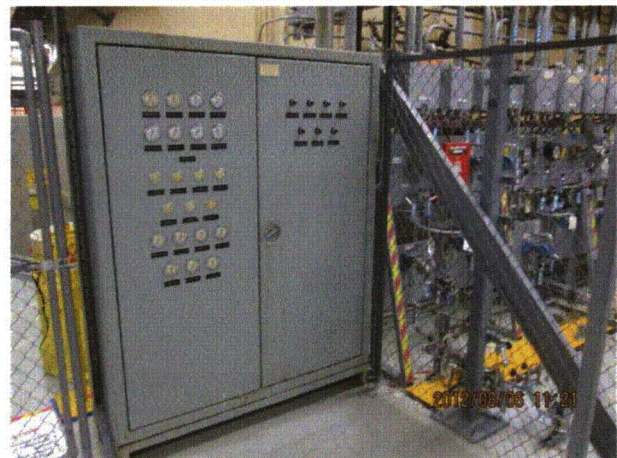
Seismic Walkdown Team: J. Griffith & M. Wodarczyk - 8/6/2012

Evaluated by:  James Griffith Date: 10/4/2012  
 Michael Wodarczyk 10/4/2012

**Photos**



20120806-QuadCities-2 204



20120806-QuadCities-2 205

Status:  Y  N  U

Area Walk-By Checklist (AWC)

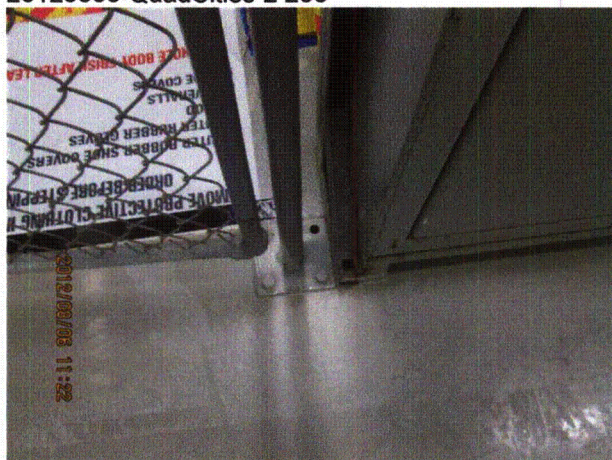
Location (Bldg, Elev, Room/Area): AWC-U2-04



20120806-QuadCities-2 206



20120806-QuadCities-2 207



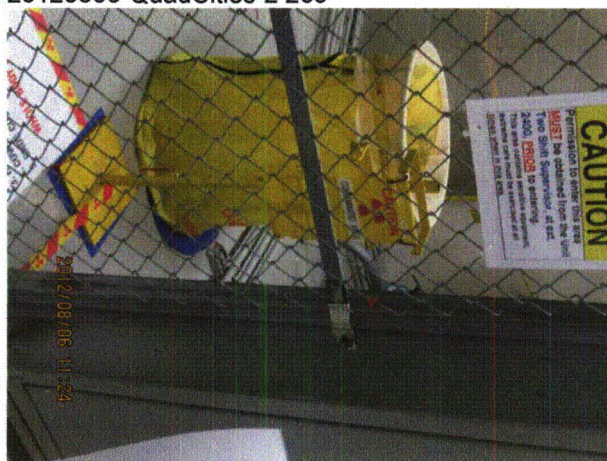
20120806-QuadCities-2 208



20120806-QuadCities-2 209



20120806-QuadCities-2 210



20120806-QuadCities-2 211

Status:  Y  N  U

**Area Walk-By Checklist (AWC)**

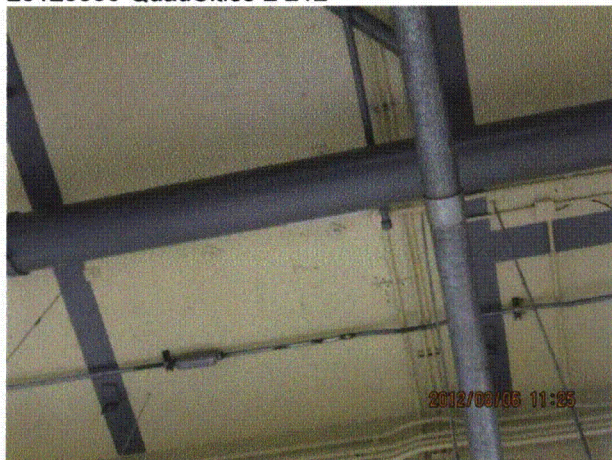
Location (Bldg, Elev, Room/Area): AWC-U2-04



20120806-QuadCities-2 212



20120806-QuadCities-2 213



20120806-QuadCities-2 214

Status:  Y  N  U

### Area Walk-By Checklist (AWC)

Location (Bldg, Elev, Room/Area): AWC-U2-05

---

#### Instructions for Completing Checklist

This checklist may be used to document the results of the Area Walk-By near one or more SWEL items. The space below each of the following questions may be used to record the results of judgments and findings. Additional space is provided at the end of this checklist for documenting other comments.

---

1. Does anchorage of equipment in the area appear to be free of potentially adverse seismic conditions (if visible without necessarily opening cabinets)? Yes
  
  2. Does anchorage of equipment in the area appear to be free of significant degraded conditions? Yes  
*Minor surface corrosion and minor lack of thread engagement in several locations judged to be acceptable.*
  
  3. Based on a visual inspection from the floor, do the cable/conduit raceways and HVAC ducting appear to be free of potentially adverse seismic conditions (e.g., condition of supports is adequate and fill conditions of cable trays appear to be inside acceptable limits)? Yes
  
  4. Does it appear that the area is free of potentially adverse seismic spatial interactions with other equipment in the area (e.g., ceiling tiles and lighting)? Yes  
*Rod hangers near pipes and conduits are flexible and judged to be acceptable.*
  
  5. Does it appear that the area is free of potentially adverse seismic interactions that could cause flooding or spray in the area? Yes  
*Threaded fire piping is well-supported and judged to be acceptable.*
  
  6. Does it appear that the area is free of potentially adverse seismic interactions that could cause a fire in the area? Yes
  
  7. Does it appear that the area is free of potentially adverse seismic interactions associated with housekeeping practices, storage of portable equipment, and temporary installations (e.g., scaffolding, lead shielding)? Yes
-

Status:  Y  N  U

**Area Walk-By Checklist (AWC)**

Location (Bldg, Elev, Room/Area): AWC-U2-05

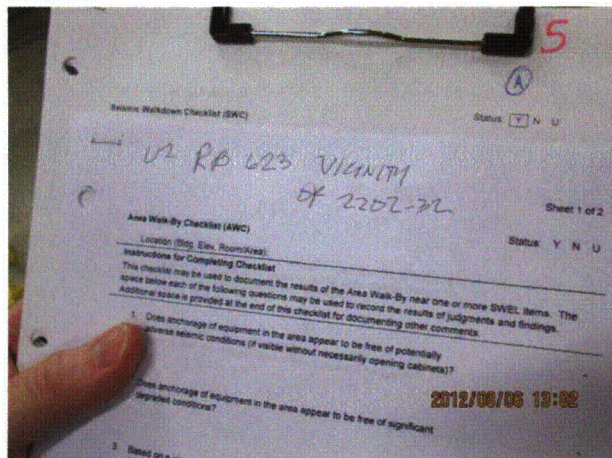
8. Have you looked for and found no other seismic conditions that could adversely affect the safety functions of the equipment in the area? Yes  
*Fence post base plate missing 1 of 4 anchors; judged to be acceptable.*

**Comments**

Seismic Walkdown Team: J. Griffith & M. Wodarczyk - 8/6/2012

Evaluated by: James D. Griffith James Griffith Date: 10/4/2012  
Michael J. Wodarczyk Michael Wodarczyk 10/4/2012

**Photos**



20120806-QuadCities-2 239



20120806-QuadCities-2 240

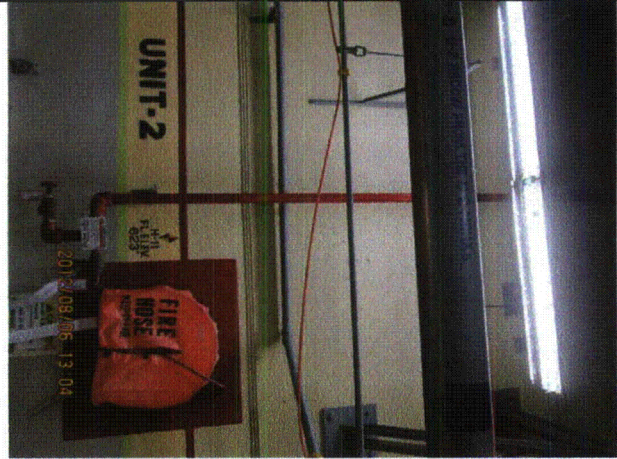
Status:  Y  N  U

**Area Walk-By Checklist (AWC)**

Location (Bldg, Elev, Room/Area): AWC-U2-05



20120806-QuadCities-2 241



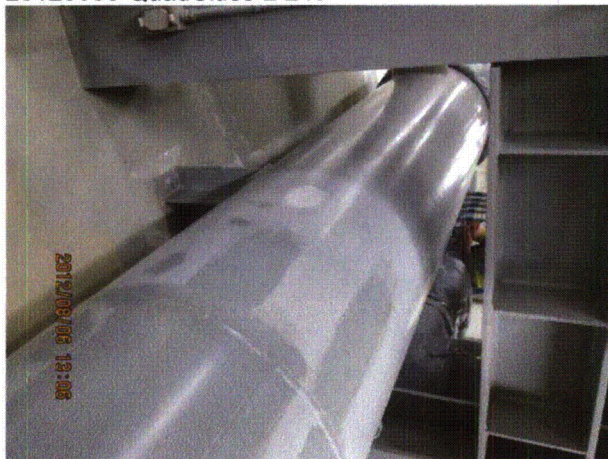
20120806-QuadCities-2 242



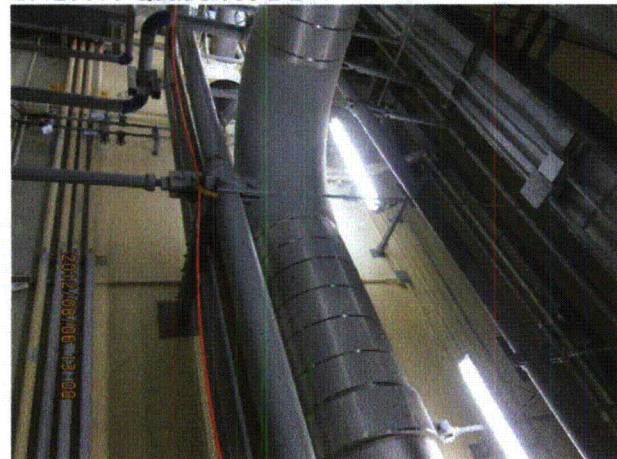
20120806-QuadCities-2 243



20120806-QuadCities-2 244



20120806-QuadCities-2 245

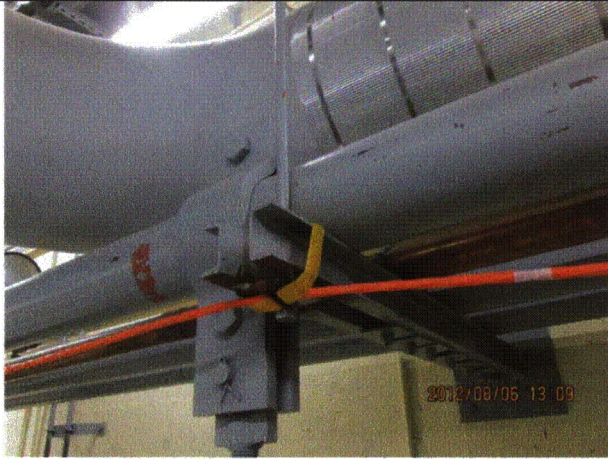


20120806-QuadCities-2 246

Status:  Y  N  U

**Area Walk-By Checklist (AWC)**

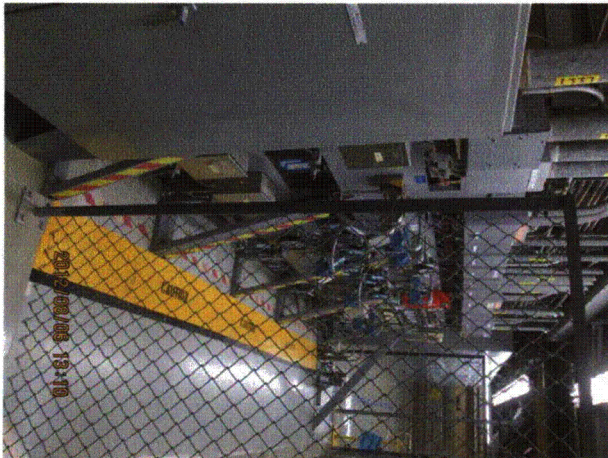
Location (Bldg, Elev, Room/Area): AWC-U2-05



20120806-QuadCities-2 247



20120806-QuadCities-2 248



20120806-QuadCities-2 249



20120806-QuadCities-2 250