

Status:  Y  N  U

**Seismic Walkdown Checklist (SWC)**

Equipment ID No.: 2-3903

Equipment Class: (5) Horizontal Pumps

Equipment Description: PUMP, DG COOLING - U2 DIESEL GENERATOR COOLING WATER PUMP

Project: Quad Cities 2 SWEL

Location (Bldg, Elev, Room/Area): TB, 547.00 ft, ALL

Manufacturer/Model:

**Instructions for Completing Checklist**

This checklist may be used to document the results of the Seismic Walkdown of an item of equipment on the SWEL. The space below each of the following questions may be used to record the results of judgments and findings. Additional space is provided at the end of this checklist for documenting other comments.

**Anchorage**

1. Is anchorage configuration verification required (i.e., is the item one of the 50% of SWEL items requiring such verification)? Yes
  
2. Is the anchorage free of bent, broken, missing or loose hardware? Yes
  
3. Is the anchorage free of corrosion that is more than mild surface oxidation? Yes
  
4. Is the anchorage free of visible cracks in the concrete near the anchors? Yes
  
5. Is the anchorage configuration consistent with plant documentation? (Note: This question only applies if the item is one of the 50% for which an anchorage configuration verification is required.) Yes
  
6. Based on the above anchorage evaluations, is the anchorage free of potentially adverse seismic conditions? Yes

Status:  Y  N  U

**Seismic Walkdown Checklist (SWC)**

Equipment ID No.: 2-3903

Equipment Class: (5) Horizontal Pumps

Equipment Description: PUMP, DG COOLING - U2 DIESEL GENERATOR COOLING WATER PUMP

**Interaction Effects**

7. Are soft targets free from impact by nearby equipment or structures? Yes
8. Are overhead equipment, distribution systems, ceiling tiles and lighting, and masonry block walls not likely to collapse onto the equipment? Yes  
*Overhead light fixtures judged to be acceptable.*
9. Do attached lines have adequate flexibility to avoid damage? Yes
10. Based on the above seismic interaction evaluations, is equipment free of potentially adverse seismic interaction effects? Yes

**Other Adverse Conditions**

11. Have you looked for and found no adverse seismic conditions that could adversely affect the safety functions of the equipment? Yes

**Comments**

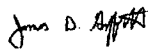
SEWS Anchorage Notes:

Pump anchored by six 7/8" (3 per side) cast-in-place anchors.

\*\*\*\*\*

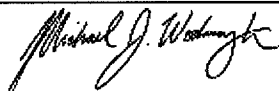
Seismic Walkdown Team: J. Griffith & M. Wodarcyk - 8/8/2012

Evaluated by:



James Griffith

Date: 10/4/2012



Michael Wodarcyk

10/4/2012

Status:  Y  N  U

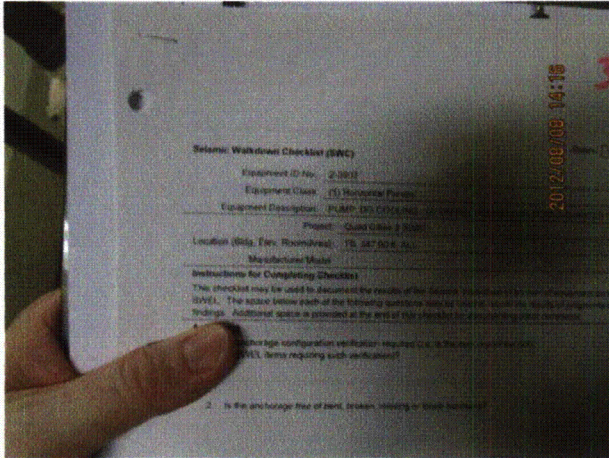
**Seismic Walkdown Checklist (SWC)**

Equipment ID No.: 2-3903

Equipment Class: (5) Horizontal Pumps

Equipment Description: PUMP, DG COOLING - U2 DIESEL GENERATOR COOLING WATER PUMP

**Photos**



20120808-QuadCities-2 361



20120808-QuadCities-2 362





Status:  Y  N  U

**Seismic Walkdown Checklist (SWC)**

Equipment ID No.: 2-3903

Equipment Class: (5) Horizontal Pumps

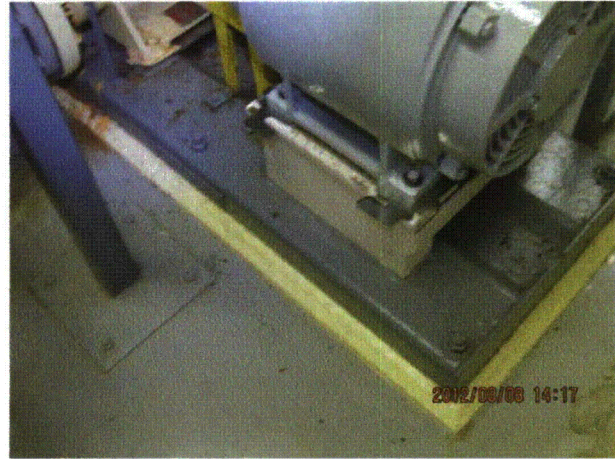
Equipment Description: PUMP, DG COOLING - U2 DIESEL GENERATOR COOLING WATER PUMP

20120808-QuadCities-2 363

20120808-QuadCities-2 364



20120808-QuadCities-2 365



20120808-QuadCities-2 366



Status:  Y  N  U

**Seismic Walkdown Checklist (SWC)**

Equipment ID No.: 250 VDC BATT 2

Equipment Class: (15) Batteries on Racks

Equipment Description: BATTERY, 250V

Project: Quad Cities 2 SWEL

Location (Bldg, Elev, Room/Area): TB, 628.00 ft, ALL

Manufacturer/Model:

**Instructions for Completing Checklist**

This checklist may be used to document the results of the Seismic Walkdown of an item of equipment on the SWEL. The space below each of the following questions may be used to record the results of judgments and findings. Additional space is provided at the end of this checklist for documenting other comments.

**Anchorage**

1. Is anchorage configuration verification required (i.e., is the item one of the 50% of SWEL items requiring such verification)? Yes
  
2. Is the anchorage free of bent, broken, missing or loose hardware? Yes  
*Although a missing anchor was discussed in the SQUG notes, a thorough examination revealed that there are no missing anchors.*
  
3. Is the anchorage free of corrosion that is more than mild surface oxidation? Yes  
*Minor surface corrosion judged to be acceptable.*
  
4. Is the anchorage free of visible cracks in the concrete near the anchors? Yes  
*Minor floor shrinkage cracks judged to be acceptable.*
  
5. Is the anchorage configuration consistent with plant documentation? (Note: This question only applies if the item is one of the 50% for which an anchorage configuration verification is required.) Yes
  
6. Based on the above anchorage evaluations, is the anchorage free of potentially adverse seismic conditions? Yes

Status:  Y  N  U

**Seismic Walkdown Checklist (SWC)**

Equipment ID No.: 250 VDC BATT 2

Equipment Class: (15) Batteries on Racks

Equipment Description: BATTERY, 250V

**Interaction Effects**

- |   |     |
|---|-----|
| 7. Are soft targets free from impact by nearby equipment or structures?   | Yes |
| 8. Are overhead equipment, distribution systems, ceiling tiles and lighting, and masonry block walls not likely to collapse onto the equipment? | Yes |
| 9. Do attached lines have adequate flexibility to avoid damage?   | Yes |
| 10. Based on the above seismic interaction evaluations, is equipment free of potentially adverse seismic interaction effects?                   | Yes |

**Other Adverse Conditions**

- |  |     |
|--|-----|
| 11. Have you looked for and found no adverse seismic conditions that could adversely affect the safety functions of the equipment? | Yes |
|--|-----|

**Comments**

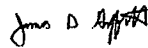
SEWS Anchorage Notes:

Each leg anchored by a single 3/8" Wedge type expansion anchor through a 3x3x1/4" clip angle thru-bolted thru the tube leg.

\*\*\*\*\*

Seismic Walkdown Team: J. Griffith & M. Wodarczyk - 8/7/2012

Evaluated by:



James Griffith

Date: 10/4/2012



Michael Wodarczyk

10/4/2012

Status:  Y  N  U

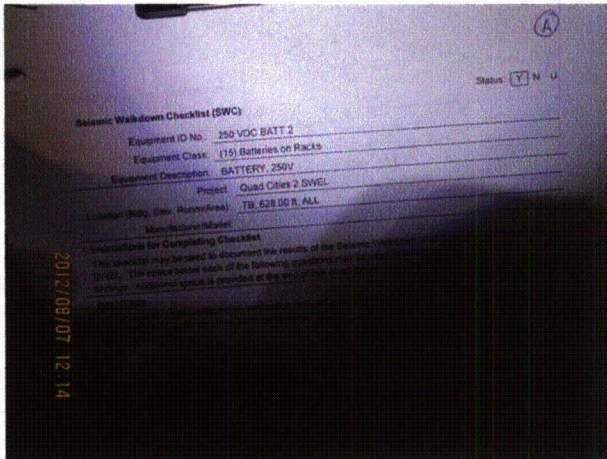
**Seismic Walkdown Checklist (SWC)**

Equipment ID No.: 250 VDC BATT 2

Equipment Class: (15) Batteries on Racks

Equipment Description: BATTERY, 250V

**Photos**



20120807-QuadCities-2 244



20120807-QuadCities-2 245



20120807-QuadCities-2 246



20120807-QuadCities-2 247



Status:  Y  N  U

**Seismic Walkdown Checklist (SWC)**

Equipment ID No.: 250 VDC BATT 2

Equipment Class: (15) Batteries on Racks

Equipment Description: BATTERY, 250V



20120807-QuadCities-2 248



20120807-QuadCities-2 249



20120807-QuadCities-2 250



20120807-QuadCities-2 251



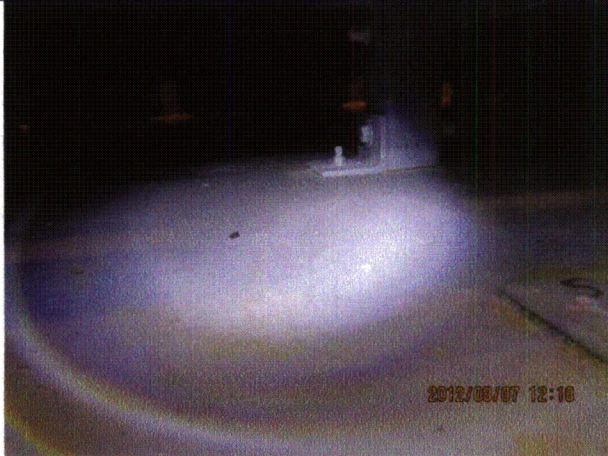
Status:  Y  N  U

**Seismic Walkdown Checklist (SWC)**

Equipment ID No.: 250 VDC BATT 2

Equipment Class: (15) Batteries on Racks

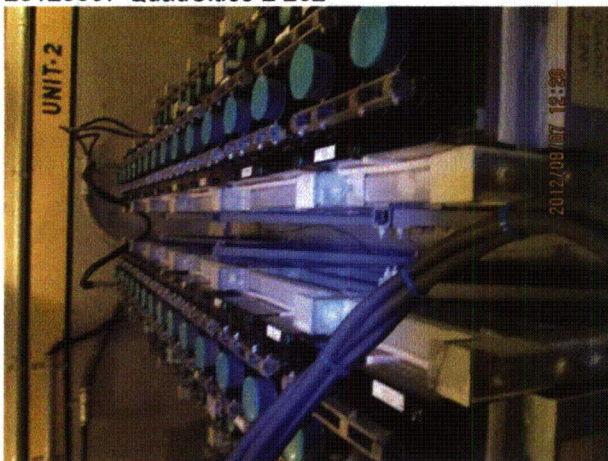
Equipment Description: BATTERY, 250V



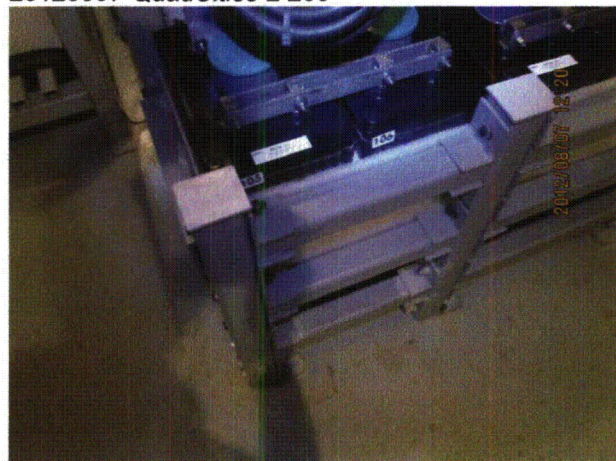
20120807-QuadCities-2 252



20120807-QuadCities-2 253



20120807-QuadCities-2 254



20120807-QuadCities-2 255



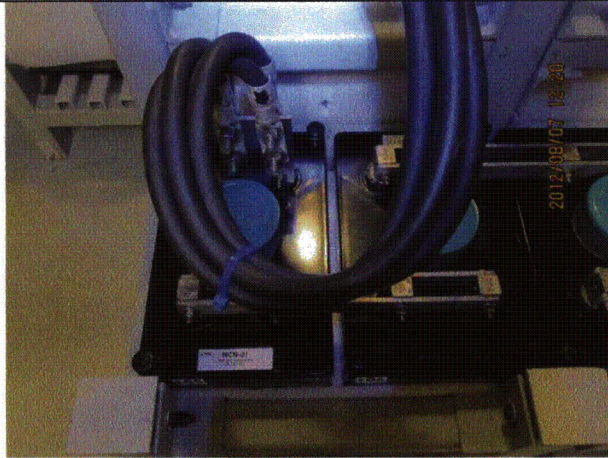
Status:  Y  N  U

**Seismic Walkdown Checklist (SWC)**

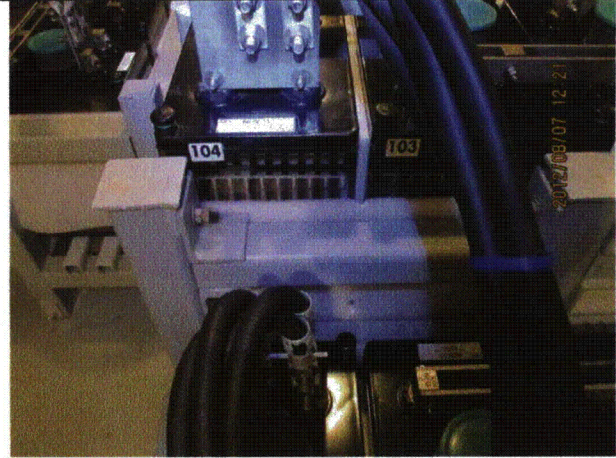
Equipment ID No.: 250 VDC BATT 2

Equipment Class: (15) Batteries on Racks

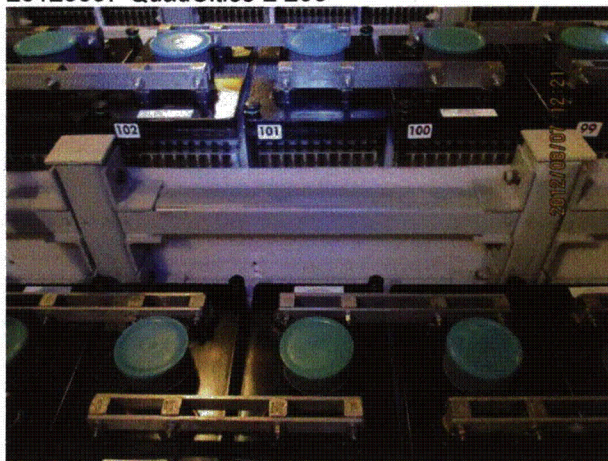
Equipment Description: BATTERY, 250V



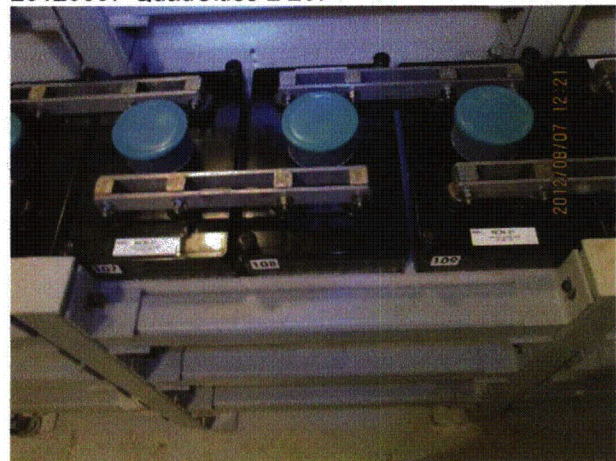
20120807-QuadCities-2 256



20120807-QuadCities-2 257



20120807-QuadCities-2 258



20120807-QuadCities-2 259



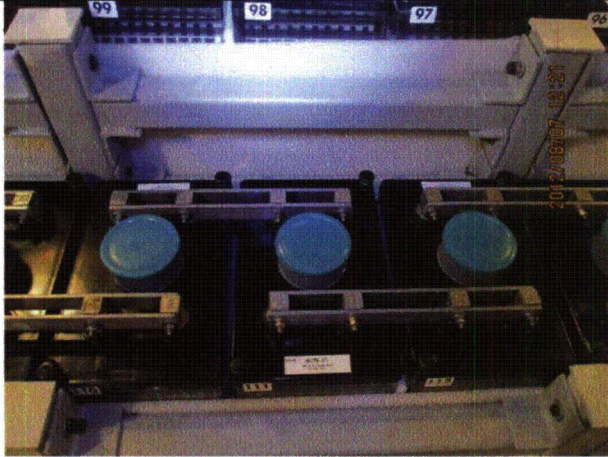
Status:  Y  N  U

**Seismic Walkdown Checklist (SWC)**

Equipment ID No.: 250 VDC BATT 2

Equipment Class: (15) Batteries on Racks

Equipment Description: BATTERY, 250V



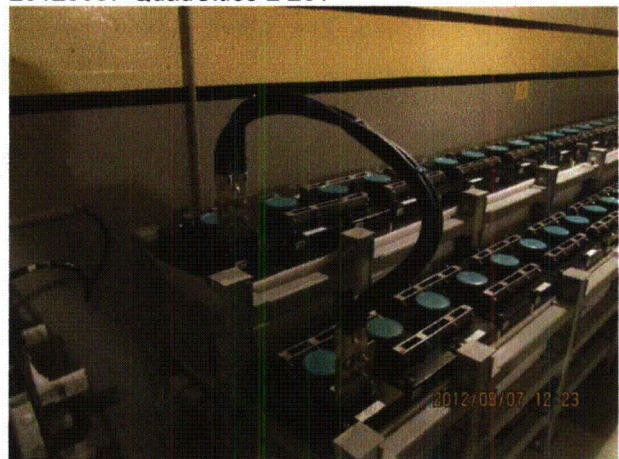
20120807-QuadCities-2 260



20120807-QuadCities-2 261



20120807-QuadCities-2 262



20120807-QuadCities-2 263

Status:  Y  N  U

**Seismic Walkdown Checklist (SWC)**

Equipment ID No.: 250VDC MCC 2

Equipment Class: (1) Motor Control Centers

Equipment Description: MCC

Project: Quad Cities 2 SWEL

Location (Bldg, Elev, Room/Area): TB, 615.00 ft, ALL

Manufacturer/Model:

**Instructions for Completing Checklist**

This checklist may be used to document the results of the Seismic Walkdown of an item of equipment on the SWEL. The space below each of the following questions may be used to record the results of judgments and findings. Additional space is provided at the end of this checklist for documenting other comments.

**Anchorage**

1. Is anchorage configuration verification required (i.e., is the item one of the 50% of SWEL items requiring such verification)? No
  
2. Is the anchorage free of bent, broken, missing or loose hardware? Yes
  
3. Is the anchorage free of corrosion that is more than mild surface oxidation? Yes
  
4. Is the anchorage free of visible cracks in the concrete near the anchors? Yes  
*Minor shrinkage cracks in floor judged to be acceptable.*
  
5. Is the anchorage configuration consistent with plant documentation? (Note: This question only applies if the item is one of the 50% for which an anchorage configuration verification is required.) Not Applicable
  
6. Based on the above anchorage evaluations, is the anchorage free of potentially adverse seismic conditions? Yes

Status:  Y  N  U

**Seismic Walkdown Checklist (SWC)**

Equipment ID No.: 250VDC MCC 2

Equipment Class: (1) Motor Control Centers

Equipment Description: MCC

**Interaction Effects**

7. Are soft targets free from impact by nearby equipment or structures? Yes
8. Are overhead equipment, distribution systems, ceiling tiles and lighting, and masonry block walls not likely to collapse onto the equipment? Yes  
*Overhead light fixtures judged to be acceptable. Masonry wall in vicinity restrained at top and judged to be acceptable.*
9. Do attached lines have adequate flexibility to avoid damage? Yes
10. Based on the above seismic interaction evaluations, is equipment free of potentially adverse seismic interaction effects? Yes

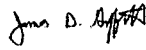
**Other Adverse Conditions**

11. Have you looked for and found no adverse seismic conditions that could adversely affect the safety functions of the equipment? Yes

**Comments**

Seismic Walkdown Team: J. Griffith & M. Wodarczyk - 8/7/2012

Evaluated by:

 James Griffith

Date: 10/4/2012

  
Michael Wodarczyk

10/4/2012



Status:  Y  N  U

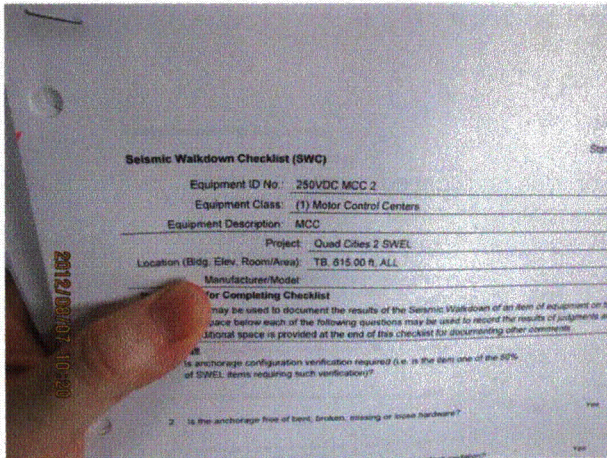
**Seismic Walkdown Checklist (SWC)**

Equipment ID No.: 250VDC MCC 2

Equipment Class: (1) Motor Control Centers

Equipment Description: MCC

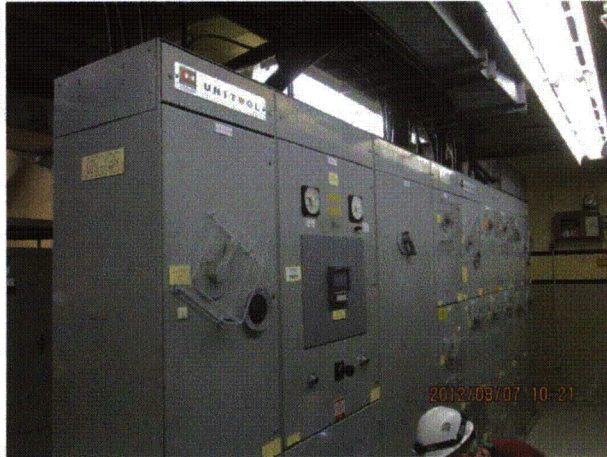
**Photos**



20120807-QuadCities-2 194



20120807-QuadCities-2 195



20120807-QuadCities-2 196



20120807-QuadCities-2 197



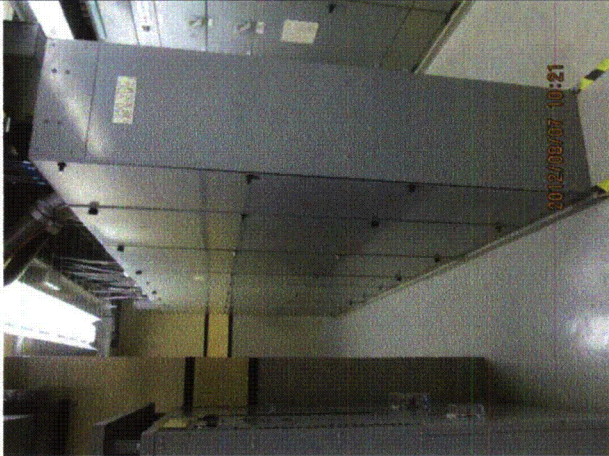
Status:  Y  N  U

**Seismic Walkdown Checklist (SWC)**

Equipment ID No.: 250VDC MCC 2

Equipment Class: (1) Motor Control Centers

Equipment Description: MCC



20120807-QuadCities-2 198



20120807-QuadCities-2 199



20120807-QuadCities-2 200



20120807-QuadCities-2 201



Status:  Y  N  U

**Seismic Walkdown Checklist (SWC)**

Equipment ID No.: 250VDC MCC 2

Equipment Class: (1) Motor Control Centers

Equipment Description: MCC



20120807-QuadCities-2 202



20120807-QuadCities-2 203



20120807-QuadCities-2 204



20120807-QuadCities-2 205



Status:  Y  N  U

**Seismic Walkdown Checklist (SWC)**

Equipment ID No.: 250VDC MCC 2

Equipment Class: (1) Motor Control Centers

Equipment Description: MCC



20120807-QuadCities-2 206



20120807-QuadCities-2 207



20120807-QuadCities-2 208



20120807-QuadCities-2 209

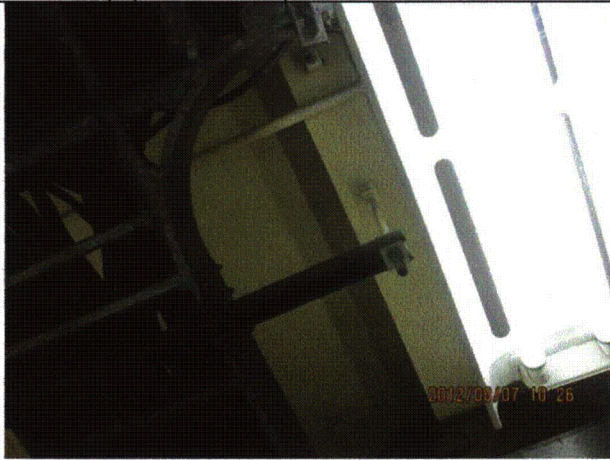
Status:  Y  N  U

**Seismic Walkdown Checklist (SWC)**

Equipment ID No.: 250VDC MCC 2

Equipment Class: (1) Motor Control Centers

Equipment Description: MCC



20120807-QuadCities-2 210



20120807-QuadCities-2 211

Status:  Y  N  U

**Seismic Walkdown Checklist (SWC)**

Equipment ID No.: 250VDC MCC 2A

Equipment Class: (1) Motor Control Centers

Equipment Description: MCC

Project: Quad Cities 2 SWEL

Location (Bldg, Elev, Room/Area): RB, 623.00 ft, ALL

Manufacturer/Model:

**Instructions for Completing Checklist**

This checklist may be used to document the results of the Seismic Walkdown of an item of equipment on the SWEL. The space below each of the following questions may be used to record the results of judgments and findings. Additional space is provided at the end of this checklist for documenting other comments.

**Anchorage**

1. Is anchorage configuration verification required (i.e., is the item one of the 50% of SWEL items requiring such verification)? Yes
  
2. Is the anchorage free of bent, broken, missing or loose hardware? Yes
  
3. Is the anchorage free of corrosion that is more than mild surface oxidation? Yes
  
4. Is the anchorage free of visible cracks in the concrete near the anchors? Yes  
*Minor shrinkage cracks in floor judged to be acceptable.*
  
5. Is the anchorage configuration consistent with plant documentation? (Note: This question only applies if the item is one of the 50% for which an anchorage configuration verification is required.) Yes
  
6. Based on the above anchorage evaluations, is the anchorage free of potentially adverse seismic conditions? Yes



Status:  Y  N  U

**Seismic Walkdown Checklist (SWC)**

Equipment ID No.: 250VDC MCC 2A

Equipment Class: (1) Motor Control Centers

Equipment Description: MCC

**Interaction Effects**

7. Are soft targets free from impact by nearby equipment or structures? Yes  
*Door on back of MCC has minor skew at bottom. Door is adequately latched and judged to be acceptable.*
8. Are overhead equipment, distribution systems, ceiling tiles and lighting, and masonry block walls not likely to collapse onto the equipment? Yes  
*Overhead light fixtures judged to be acceptable. Short U-shaped masonry walls (65, 66, and 67 per B-1734, Rev. C) behind MCC are safety-related.*
9. Do attached lines have adequate flexibility to avoid damage? Yes
10. Based on the above seismic interaction evaluations, is equipment free of potentially adverse seismic interaction effects? Yes

**Other Adverse Conditions**

11. Have you looked for and found no adverse seismic conditions that could adversely affect the safety functions of the equipment? Yes  
*Clearance between MCC and fence judged to be acceptable.*

**Comments**

SEWS Anchorage Notes:

Welded to embedded angle with total of 33" L 1/4" th fillet distributed fairly even. There is 33" of weld in the front and back. Pad is anchored to floor by 1/2" CEA @ 12" half each side.

\*\*\*\*\*

Seismic Walkdown Team: J. Griffith & M. Wodarcyk - 8/6/2012

Evaluated by: James D. Griffith James Griffith Date: 10/4/2012

Michael J. Wodarcyk Michael Wodarcyk 10/4/2012

Status:  Y  N  U

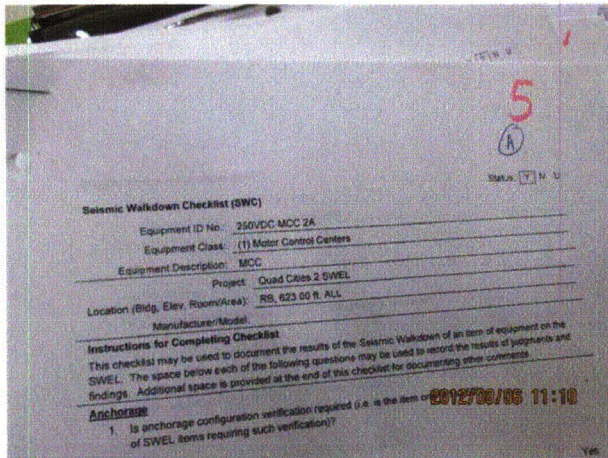
**Seismic Walkdown Checklist (SWC)**

Equipment ID No.: 250VDC MCC 2A

Equipment Class: (1) Motor Control Centers

Equipment Description: MCC

**Photos**



20120806-QuadCities-2 186



20120806-QuadCities-2 187



20120806-QuadCities-2 188



20120806-QuadCities-2 189



Status:  Y  N  U

**Seismic Walkdown Checklist (SWC)**

Equipment ID No.: 250VDC MCC 2A

Equipment Class: (1) Motor Control Centers

Equipment Description: MCC



20120806-QuadCities-2 190



20120806-QuadCities-2 191



20120806-QuadCities-2 192



20120806-QuadCities-2 193



Status:  Y  N  U

**Seismic Walkdown Checklist (SWC)**

Equipment ID No.: 250VDC MCC 2A

Equipment Class: (1) Motor Control Centers

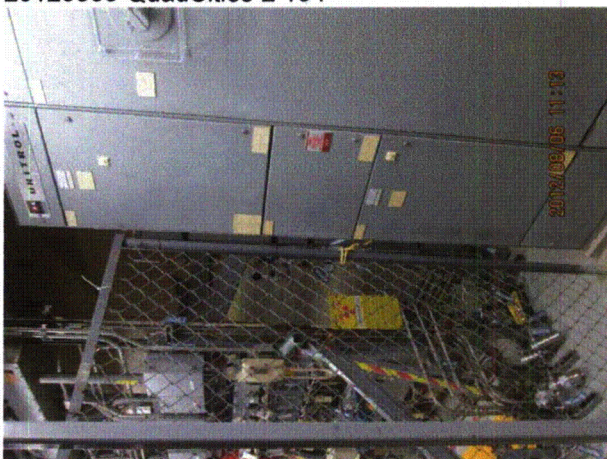
Equipment Description: MCC



20120806-QuadCities-2 194



20120806-QuadCities-2 195



20120806-QuadCities-2 196



20120806-QuadCities-2 197



Status:  Y  N  U

**Seismic Walkdown Checklist (SWC)**

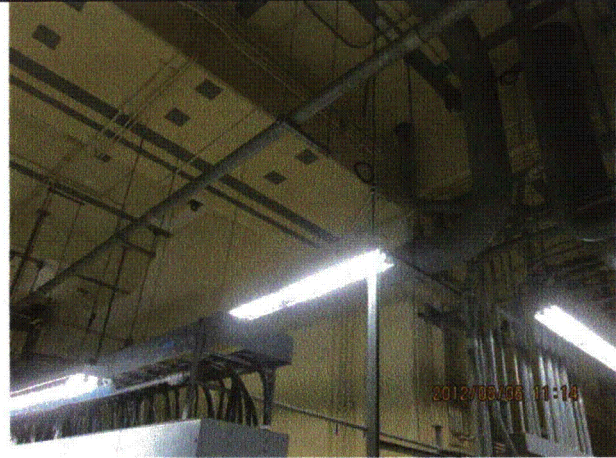
Equipment ID No.: 250VDC MCC 2A

Equipment Class: (1) Motor Control Centers

Equipment Description: MCC



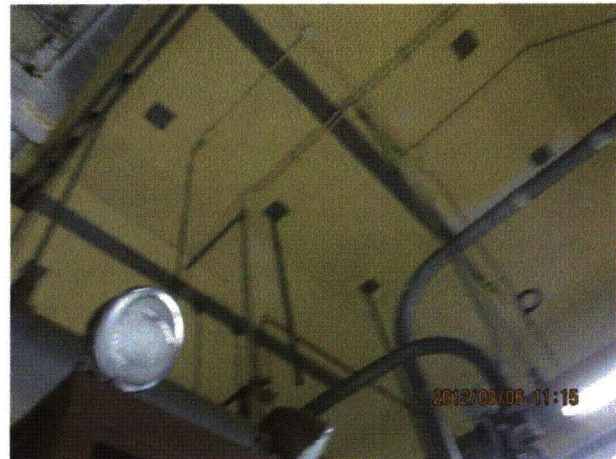
20120806-QuadCities-2 198



20120806-QuadCities-2 199



20120806-QuadCities-2 200



20120806-QuadCities-2 201



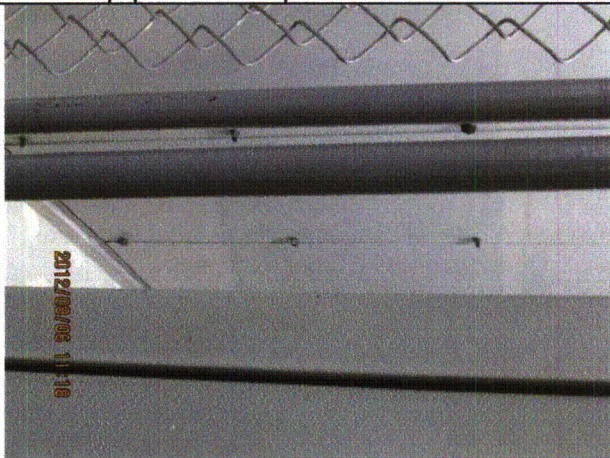
Status:  Y  N  U

**Seismic Walkdown Checklist (SWC)**

Equipment ID No.: 250VDC MCC 2A

Equipment Class: (1) Motor Control Centers

Equipment Description: MCC



20120806-QuadCities-2 202



20120806-QuadCities-2 203

Status:  Y  N  U

**Seismic Walkdown Checklist (SWC)**

Equipment ID No.: 2-5745A

Equipment Class: (10) Air Handlers

Equipment Description: COOLER, CUBICLE - HEAT EXCHANGER CONTACT STEAM-LIQUID

Project: Quad Cities 2 SWEL

Location (Bldg, Elev, Room/Area): TB, 547.00 ft, ALL

Manufacturer/Model:

**Instructions for Completing Checklist**

This checklist may be used to document the results of the Seismic Walkdown of an item of equipment on the SWEL. The space below each of the following questions may be used to record the results of judgments and findings. Additional space is provided at the end of this checklist for documenting other comments.

**Anchorage**

1. Is anchorage configuration verification required (i.e., is the item one of the 50% of SWEL items requiring such verification)? No
  
2. Is the anchorage free of bent, broken, missing or loose hardware? Yes
  
3. Is the anchorage free of corrosion that is more than mild surface oxidation? Yes
  
4. Is the anchorage free of visible cracks in the concrete near the anchors? Not Applicable  
*Supports for cooler are welded to steel framing in ceiling.*
  
5. Is the anchorage configuration consistent with plant documentation? (Note: This question only applies if the item is one of the 50% for which an anchorage configuration verification is required.) Not Applicable
  
6. Based on the above anchorage evaluations, is the anchorage free of potentially adverse seismic conditions? Yes



Status:  Y  N  U

**Seismic Walkdown Checklist (SWC)**

Equipment ID No.: 2-5745A

Equipment Class: (10) Air Handlers

Equipment Description: COOLER, CUBICLE - HEAT EXCHANGER CONTACT STEAM-LIQUID

**Interaction Effects**

7. Are soft targets free from impact by nearby equipment or structures? Yes
8. Are overhead equipment, distribution systems, ceiling tiles and lighting, and masonry block walls not likely to collapse onto the equipment? Yes
9. Do attached lines have adequate flexibility to avoid damage? Yes
10. Based on the above seismic interaction evaluations, is equipment free of potentially adverse seismic interaction effects? Yes

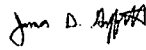
**Other Adverse Conditions**

11. Have you looked for and found no adverse seismic conditions that could adversely affect the safety functions of the equipment? Yes


**Comments**

Seismic Walkdown Team: J. Griffith & M. Wodarczyk - 8/8/2012

Evaluated by:

 James Griffith

Date: 10/4/2012

 Michael Wodarczyk

10/4/2012

Status:  Y  N  U

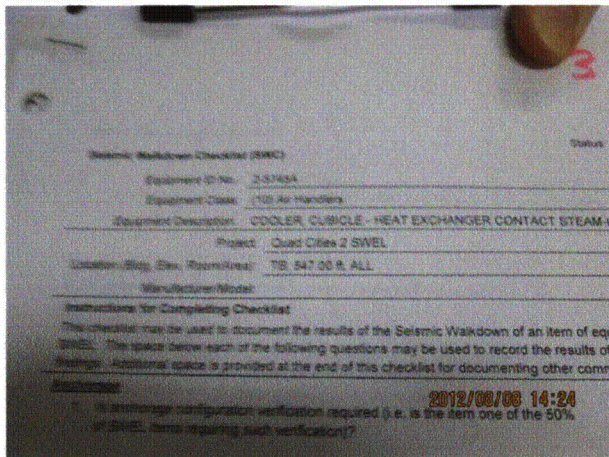
**Seismic Walkdown Checklist (SWC)**

Equipment ID No.: 2-5745A

Equipment Class: (10) Air Handlers

Equipment Description: COOLER, CUBICLE - HEAT EXCHANGER CONTACT STEAM-LIQUID

**Photos**



20120808-QuadCities-2 380



20120808-QuadCities-2 381



20120808-QuadCities-2 382



20120808-QuadCities-2 383



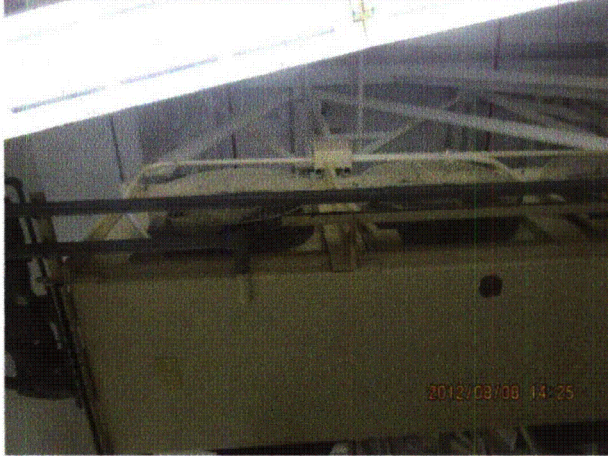
Status:  Y  N  U

**Seismic Walkdown Checklist (SWC)**

Equipment ID No.: 2-5745A

Equipment Class: (10) Air Handlers

Equipment Description: COOLER, CUBICLE - HEAT EXCHANGER CONTACT STEAM-LIQUID



20120808-QuadCities-2 384



20120808-QuadCities-2 385



20120808-QuadCities-2 386



20120808-QuadCities-2 387



Status:  Y  N  U

**Seismic Walkdown Checklist (SWC)**

Equipment ID No.: 2-5745A

Equipment Class: (10) Air Handlers

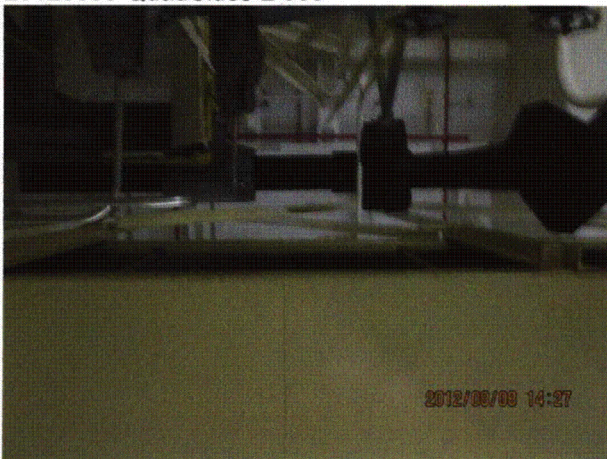
Equipment Description: COOLER, CUBICLE - HEAT EXCHANGER CONTACT STEAM-LIQUID



20120808-QuadCities-2 388



20120808-QuadCities-2 389



20120808-QuadCities-2 390



20120808-QuadCities-2 391



Status:  Y  N  U

**Seismic Walkdown Checklist (SWC)**

Equipment ID No.: 2-5745A

Equipment Class: (10) Air Handlers

Equipment Description: COOLER, CUBICLE - HEAT EXCHANGER CONTACT STEAM-LIQUID



20120808-QuadCities-2 392



20120808-QuadCities-2 393



20120808-QuadCities-2 394



20120808-QuadCities-2 395



Status:  Y  N  U

**Seismic Walkdown Checklist (SWC)**

Equipment ID No.: 2-5745A

Equipment Class: (10) Air Handlers

Equipment Description: COOLER, CUBICLE - HEAT EXCHANGER CONTACT STEAM-LIQUID



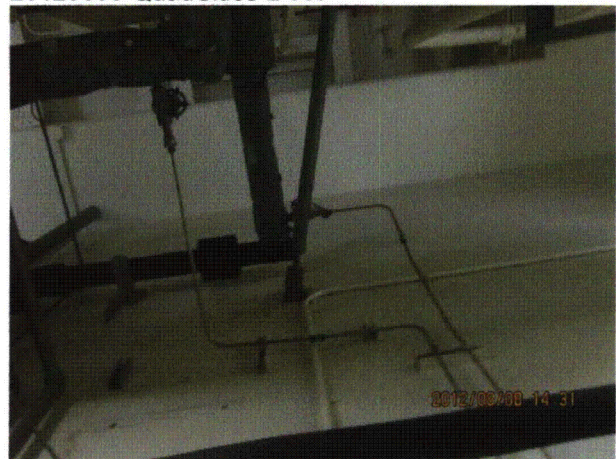
20120808-QuadCities-2 396



20120808-QuadCities-2 397



20120808-QuadCities-2 398



20120808-QuadCities-2 399



Status:  Y  N  U

**Seismic Walkdown Checklist (SWC)**

Equipment ID No.: 2-5747

Equipment Class: (10) Air Handlers

Equipment Description: COOLER, CUBICLE - HPCI ROOM COOLER

Project: Quad Cities 2 SWEL

Location (Bldg, Elev, Room/Area): RB, 554.00 ft, ALL

Manufacturer/Model:

**Instructions for Completing Checklist**

This checklist may be used to document the results of the Seismic Walkdown of an item of equipment on the SWEL. The space below each of the following questions may be used to record the results of judgments and findings. Additional space is provided at the end of this checklist for documenting other comments.

**Anchorage**

1. Is anchorage configuration verification required (i.e., is the item one of the 50% of SWEL items requiring such verification)? Yes  
*Although SQUG notes described 5 rods supporting the cooler, a total of 6 rods were observed supporting the cooler. Each rod has a plate with four 1/2" anchors to the ceiling. Minor bend in 1 of the 6 rods is judged to be acceptable.*
2. Is the anchorage free of bent, broken, missing or loose hardware? Yes
3. Is the anchorage free of corrosion that is more than mild surface oxidation? Yes
4. Is the anchorage free of visible cracks in the concrete near the anchors? Yes
5. Is the anchorage configuration consistent with plant documentation? (Note: This question only applies if the item is one of the 50% for which an anchorage configuration verification is required.) Yes
6. Based on the above anchorage evaluations, is the anchorage free of potentially adverse seismic conditions? Yes

Status:  Y  N  U

**Seismic Walkdown Checklist (SWC)**

Equipment ID No.: 2-5747

Equipment Class: (10) Air Handlers

Equipment Description: COOLER, CUBICLE - HPCI ROOM COOLER

**Interaction Effects**

7. Are soft targets free from impact by nearby equipment or structures? Yes
8. Are overhead equipment, distribution systems, ceiling tiles and lighting, and masonry block walls not likely to collapse onto the equipment? Yes  
*Overhead light fixture with open S-hook. Cooler exhaust ports protect soft targets below. Judged to be acceptable. See IR 1400098.*
9. Do attached lines have adequate flexibility to avoid damage? Yes  
*Cooler is restrained to wall on each end; thus, there are no concerns regarding the relative flexibility of the cooler and attached piping.*
10. Based on the above seismic interaction evaluations, is equipment free of potentially adverse seismic interaction effects? Yes

**Other Adverse Conditions**

11. Have you looked for and found no adverse seismic conditions that could adversely affect the safety functions of the equipment? Yes

**Comments**

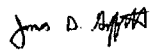
SEWS Anchorage Notes:

Cooler hung on five 5/8" rods. Each rod is anchored by four 1/2" concrete expansion anchors.

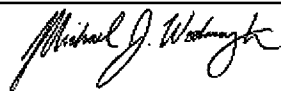
\*\*\*\*\*

Seismic Walkdown Team: J. Griffith & M. Wodarcyk - 8/9/2012

Evaluated by:

 James Griffith

Date: 10/16/2012



Michael Wodarcyk

10/16/2012



Status:  Y  N  U

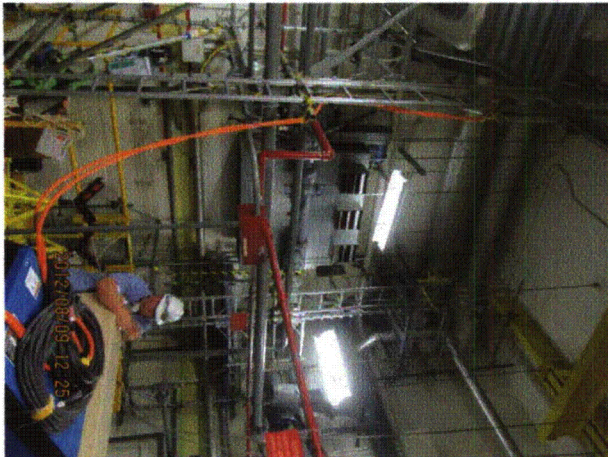
**Seismic Walkdown Checklist (SWC)**

Equipment ID No.: 2-5747

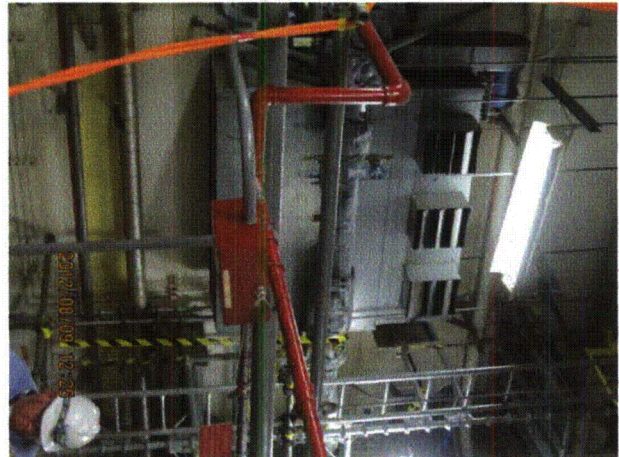
Equipment Class: (10) Air Handlers

Equipment Description: COOLER, CUBICLE - HPCI ROOM COOLER

**Photos**



20120809-QuadCities-2 218



20120809-QuadCities-2 219



20120809-QuadCities-2 220



20120809-QuadCities-2 221



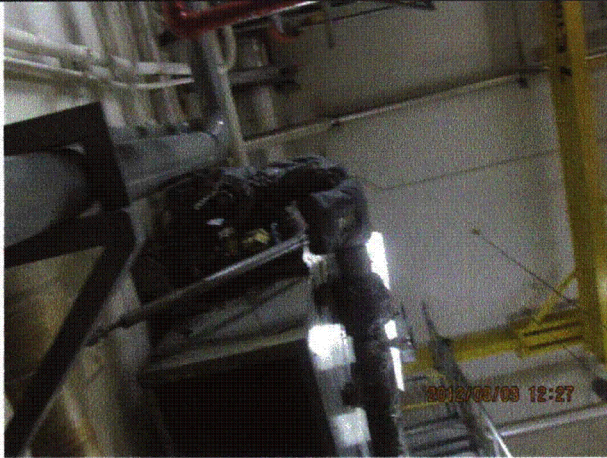
Status:  Y  N  U

**Seismic Walkdown Checklist (SWC)**

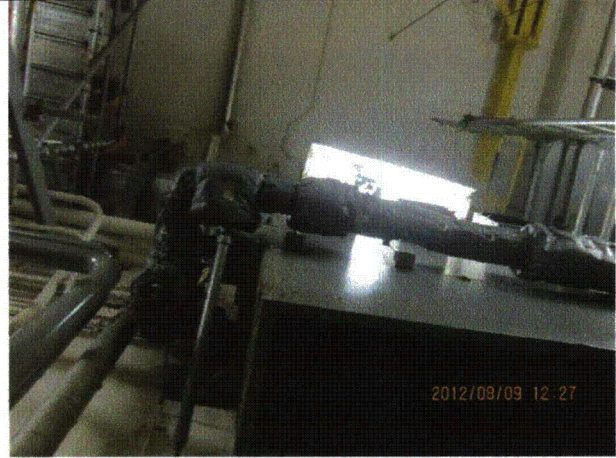
Equipment ID No.: 2-5747

Equipment Class: (10) Air Handlers

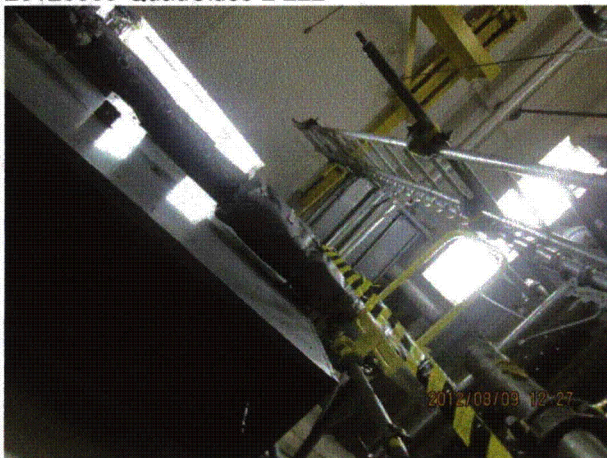
Equipment Description: COOLER, CUBICLE - HPCI ROOM COOLER



20120809-QuadCities-2 222



20120809-QuadCities-2 223



20120809-QuadCities-2 224



20120809-QuadCities-2 225



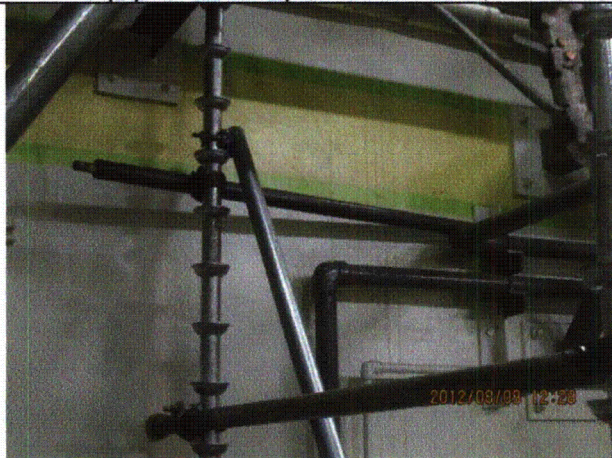
Status:  Y  N  U

**Seismic Walkdown Checklist (SWC)**

Equipment ID No.: 2-5747

Equipment Class: (10) Air Handlers

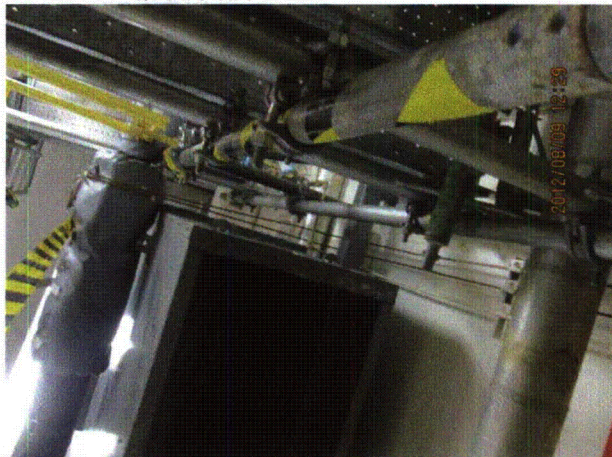
Equipment Description: COOLER, CUBICLE - HPCI ROOM COOLER



20120809-QuadCities-2 226



20120809-QuadCities-2 227



20120809-QuadCities-2 228



20120809-QuadCities-2 229



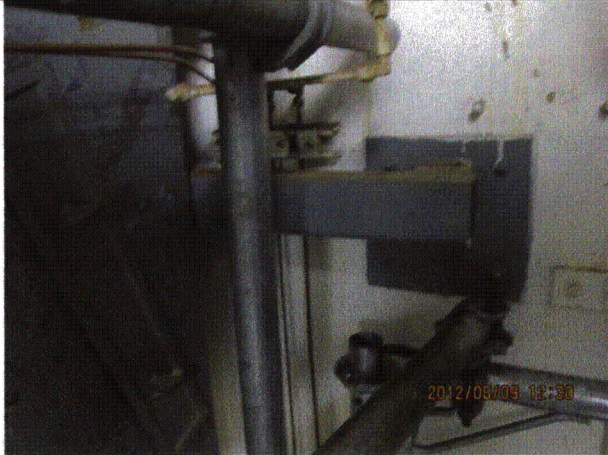
Status:  Y  N  U

**Seismic Walkdown Checklist (SWC)**

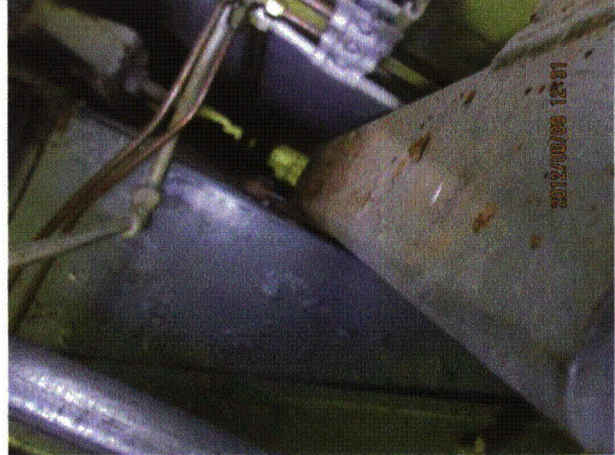
Equipment ID No.: 2-5747

Equipment Class: (10) Air Handlers

Equipment Description: COOLER, CUBICLE - HPCI ROOM COOLER



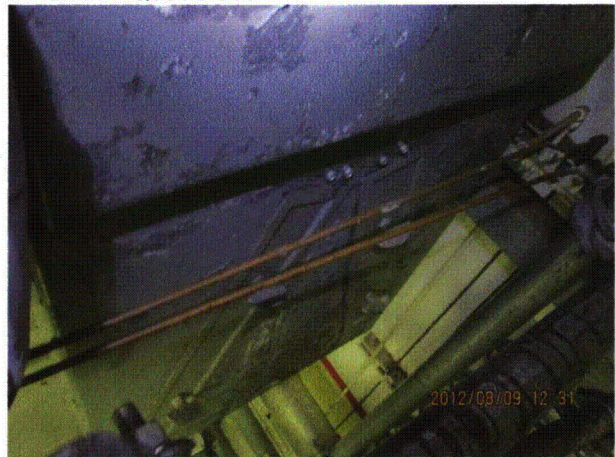
20120809-QuadCities-2 230



20120809-QuadCities-2 231



20120809-QuadCities-2 232



20120809-QuadCities-2 233



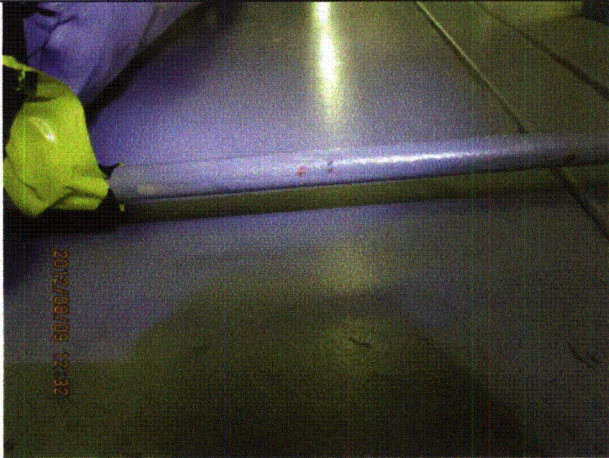
Status:  Y  N  U

**Seismic Walkdown Checklist (SWC)**

Equipment ID No.: 2-5747

Equipment Class: (10) Air Handlers

Equipment Description: COOLER, CUBICLE - HPCI ROOM COOLER



20120809-QuadCities-2 234



20120809-QuadCities-2 235



20120809-QuadCities-2 236



20120809-QuadCities-2 237



Status:  Y  N  U

**Seismic Walkdown Checklist (SWC)**

Equipment ID No.: 2-5747

Equipment Class: (10) Air Handlers

Equipment Description: COOLER, CUBICLE - HPCI ROOM COOLER



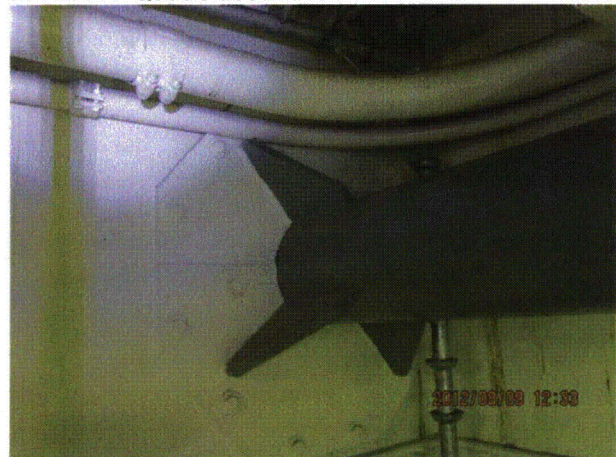
20120809-QuadCities-2 238



20120809-QuadCities-2 239



20120809-QuadCities-2 240



20120809-QuadCities-2 241



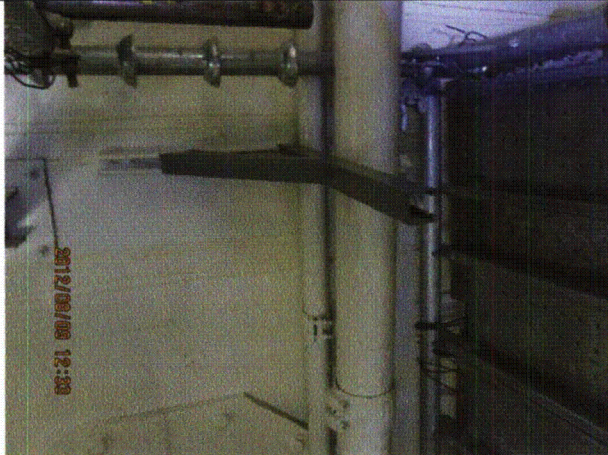
Status:  Y  N  U

**Seismic Walkdown Checklist (SWC)**

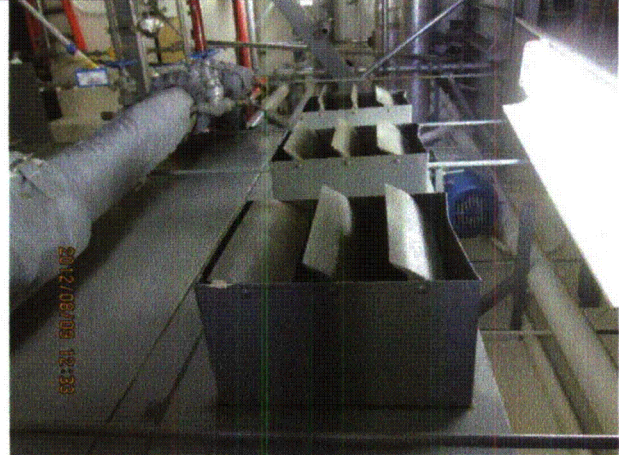
Equipment ID No.: 2-5747

Equipment Class: (10) Air Handlers

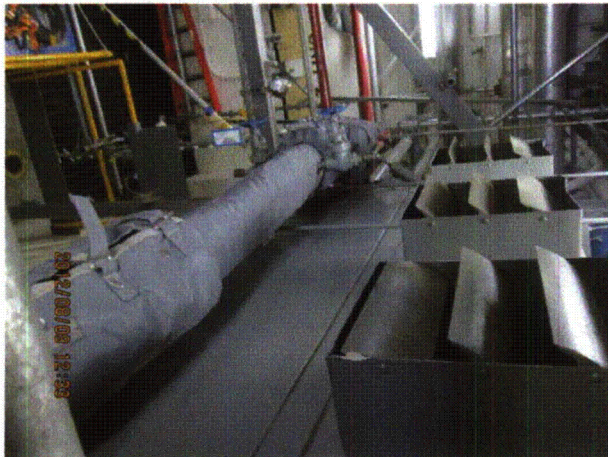
Equipment Description: COOLER, CUBICLE - HPCI ROOM COOLER



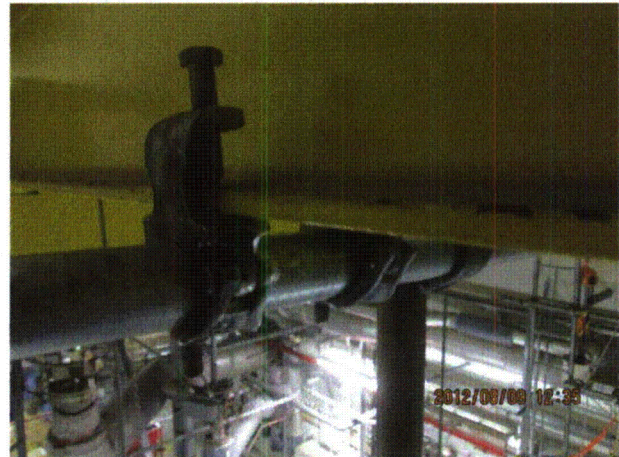
20120809-QuadCities-2 242



20120809-QuadCities-2 243



20120809-QuadCities-2 244



20120809-QuadCities-2 245



Status:  Y  N  U

**Seismic Walkdown Checklist (SWC)**

Equipment ID No.: 2-5747

Equipment Class: (10) Air Handlers

Equipment Description: COOLER, CUBICLE - HPCI ROOM COOLER



20120809-QuadCities-2 246



20120809-QuadCities-2 247



20120809-QuadCities-2 248



20120809-QuadCities-2 249



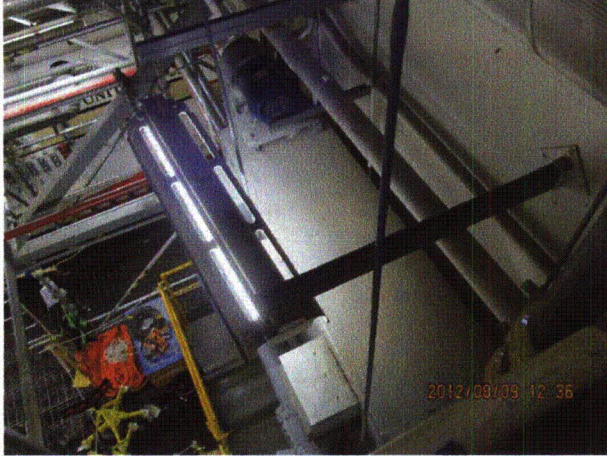
Status:  Y  N  U

**Seismic Walkdown Checklist (SWC)**

Equipment ID No.: 2-5747

Equipment Class: (10) Air Handlers

Equipment Description: COOLER, CUBICLE - HPCI ROOM COOLER



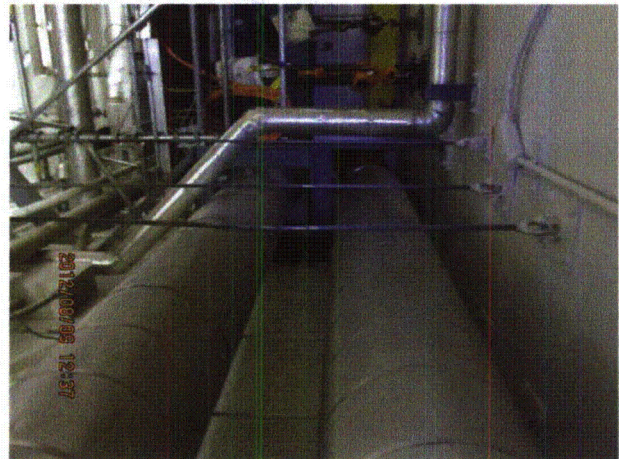
20120809-QuadCities-2 250



20120809-QuadCities-2 251



20120809-QuadCities-2 252



20120809-QuadCities-2 253



Status:  Y  N  U

**Seismic Walkdown Checklist (SWC)**

Equipment ID No.: 2-5747

Equipment Class: (10) Air Handlers

Equipment Description: COOLER, CUBICLE - HPCI ROOM COOLER



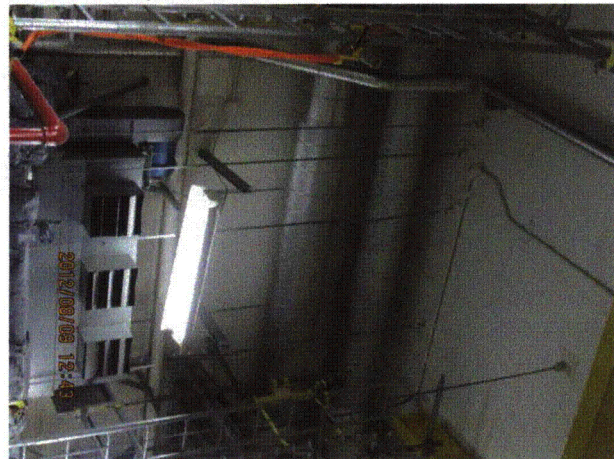
20120809-QuadCities-2 254



20120809-QuadCities-2 255



20120809-QuadCities-2 256



20120809-QuadCities-2 257



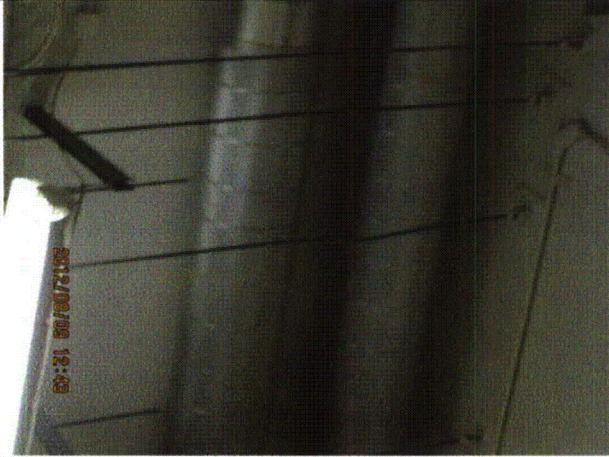
Status:  Y  N  U

**Seismic Walkdown Checklist (SWC)**

Equipment ID No.: 2-5747

Equipment Class: (10) Air Handlers

Equipment Description: COOLER, CUBICLE - HPCI ROOM COOLER



20120809-QuadCities-2 258



20120809-QuadCities-2 259

Status:  Y  N  U

**Seismic Walkdown Checklist (SWC)**

Equipment ID No.: 2-5748A

Equipment Class: (10) Air Handlers

Equipment Description: COOLER, CUBICLE - 2A CS PMP RM COOLER

Project: Quad Cities 2 SWEL

Location (Bldg, Elev, Room/Area): RB, 554.00 ft, ALL

Manufacturer/Model:

**Instructions for Completing Checklist**

This checklist may be used to document the results of the Seismic Walkdown of an item of equipment on the SWEL. The space below each of the following questions may be used to record the results of judgments and findings. Additional space is provided at the end of this checklist for documenting other comments.

**Anchorage**

1. Is anchorage configuration verification required (i.e., is the item one of the 50% of SWEL items requiring such verification)? Yes
  
2. Is the anchorage free of bent, broken, missing or loose hardware? Yes
  
3. Is the anchorage free of corrosion that is more than mild surface oxidation? Yes
  
4. Is the anchorage free of visible cracks in the concrete near the anchors? Yes  
*Minor shrinkage cracks in wall and ceiling judged to be acceptable.*
  
5. Is the anchorage configuration consistent with plant documentation? (Note: This question only applies if the item is one of the 50% for which an anchorage configuration verification is required.) Yes
  
6. Based on the above anchorage evaluations, is the anchorage free of potentially adverse seismic conditions? Yes



Status:  Y  N  U

**Seismic Walkdown Checklist (SWC)**

Equipment ID No.: 2-5748A

Equipment Class: (10) Air Handlers

Equipment Description: COOLER, CUBICLE - 2A CS PMP RM COOLER

**Interaction Effects**

7. Are soft targets free from impact by nearby equipment or structures? Yes

*Tube in contact with cooler brace. Tube is flexible, brace is rigid; judged to be acceptable.*

8. Are overhead equipment, distribution systems, ceiling tiles and lighting, and masonry block walls not likely to collapse onto the equipment? Yes

9. Do attached lines have adequate flexibility to avoid damage? Yes

*Cooler is restrained to wall; thus, there are no concerns regarding the relative flexibility of the cooler and attached piping.*

10. Based on the above seismic interaction evaluations, is equipment free of potentially adverse seismic interaction effects? Yes

**Other Adverse Conditions**

11. Have you looked for and found no adverse seismic conditions that could adversely affect the safety functions of the equipment? Yes

**Comments**

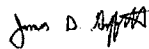
SEWS Anchorage Notes:

Cooler supported by four 5/8" rods. Each rod is anchored by four 1/2" concrete expansion anchors.

\*\*\*\*\*

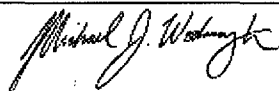
Seismic Walkdown Team: J. Griffith & M. Wodarczyk - 8/9/2012

Evaluated by:



James Griffith

Date: 10/4/2012



Michael Wodarczyk

10/4/2012

Status:  Y  N  U

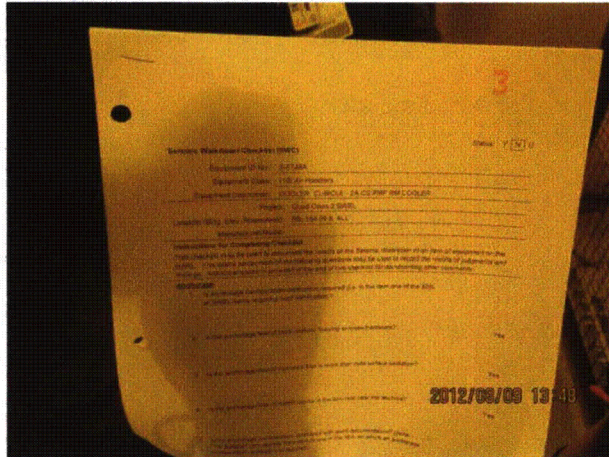
**Seismic Walkdown Checklist (SWC)**

Equipment ID No.: 2-5748A

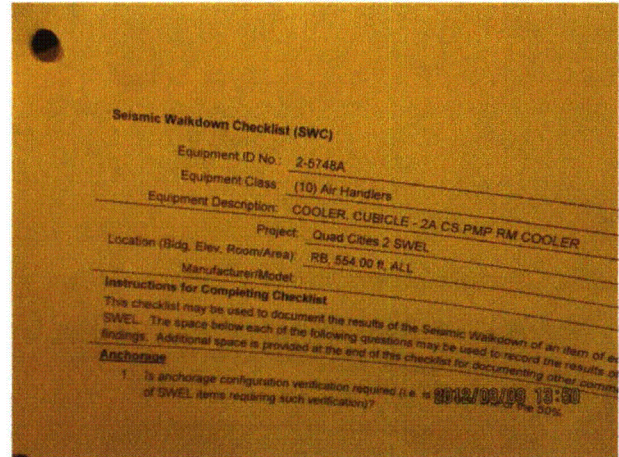
Equipment Class: (10) Air Handlers

Equipment Description: COOLER, CUBICLE - 2A CS PMP RM COOLER

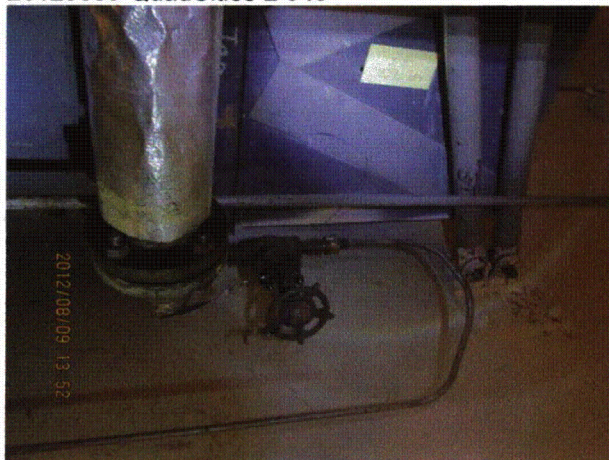
**Photos**



20120809-QuadCities-2 348



20120809-QuadCities-2 349



20120809-QuadCities-2 350



20120809-QuadCities-2 351



Status:  Y  N  U

**Seismic Walkdown Checklist (SWC)**

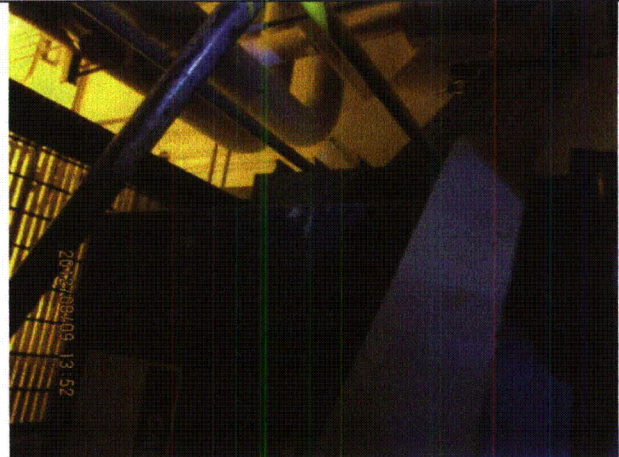
Equipment ID No.: 2-5748A

Equipment Class: (10) Air Handlers

Equipment Description: COOLER, CUBICLE - 2A CS PMP RM COOLER



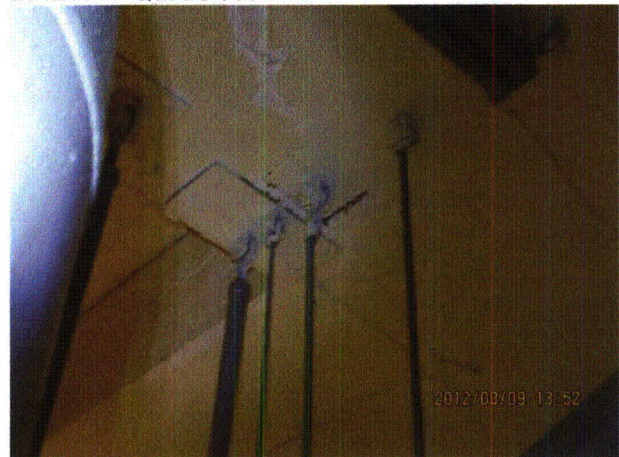
20120809-QuadCities-2 352



20120809-QuadCities-2 353



20120809-QuadCities-2 354



20120809-QuadCities-2 355



Status:  Y  N  U

**Seismic Walkdown Checklist (SWC)**

Equipment ID No.: 2-5748A

Equipment Class: (10) Air Handlers

Equipment Description: COOLER, CUBICLE - 2A CS PMP RM COOLER



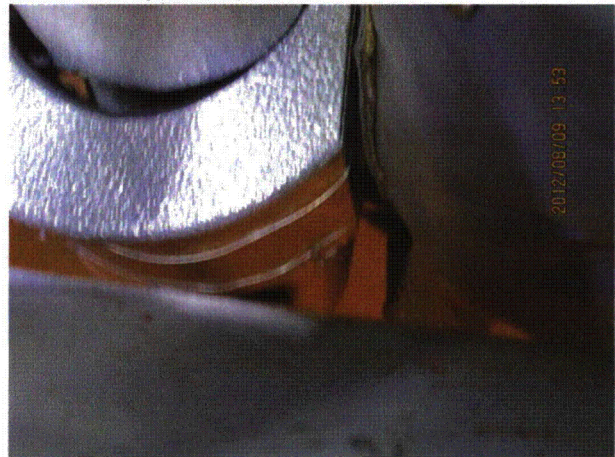
20120809-QuadCities-2 356



20120809-QuadCities-2 357



20120809-QuadCities-2 358



20120809-QuadCities-2 359



Status:  Y  N  U

**Seismic Walkdown Checklist (SWC)**

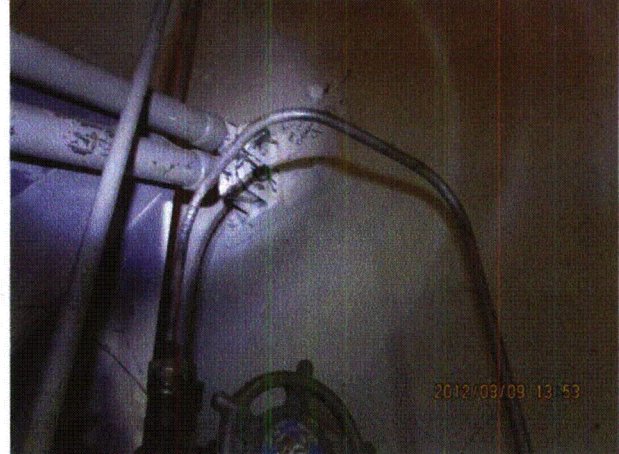
Equipment ID No.: 2-5748A

Equipment Class: (10) Air Handlers

Equipment Description: COOLER, CUBICLE - 2A CS PMP RM COOLER



20120809-QuadCities-2 360



20120809-QuadCities-2 361



20120809-QuadCities-2 362



20120809-QuadCities-2 363



Status:  Y  N  U

**Seismic Walkdown Checklist (SWC)**

Equipment ID No.: 2-5748A

Equipment Class: (10) Air Handlers

Equipment Description: COOLER, CUBICLE - 2A CS PMP RM COOLER



20120809-QuadCities-2 364



20120809-QuadCities-2 365



20120809-QuadCities-2 366



20120809-QuadCities-2 367