

Status: Y N U

Seismic Walkdown Checklist (SWC)

Equipment ID No.: 2-2301-35-MO

Equipment Class: (8) Motor-Operated and Solenoid-Operated Valves

Equipment Description: U-2 HPCI PMP DOWNSTREAM TORUS SUCT VLV

Project: Quad Cities 2 SWEL

Location (Bldg, Elev, Room/Area): RB, 554.00 ft, ALL

Manufacturer/Model:

Instructions for Completing Checklist

This checklist may be used to document the results of the Seismic Walkdown of an item of equipment on the SWEL. The space below each of the following questions may be used to record the results of judgments and findings. Additional space is provided at the end of this checklist for documenting other comments.

Anchorage

- | | |
|--|----------------|
| 1. Is anchorage configuration verification required (i.e., is the item one of the 50% of SWEL items requiring such verification)? | No |
| 2. Is the anchorage free of bent, broken, missing or loose hardware? | Not Applicable |
| 3. Is the anchorage free of corrosion that is more than mild surface oxidation? | Not Applicable |
| 4. Is the anchorage free of visible cracks in the concrete near the anchors? | Not Applicable |
| 5. Is the anchorage configuration consistent with plant documentation? (Note: This question only applies if the item is one of the 50% for which an anchorage configuration verification is required.) | Not Applicable |
| 6. Based on the above anchorage evaluations, is the anchorage free of potentially adverse seismic conditions? | Yes |

Status: Y N U

Seismic Walkdown Checklist (SWC)

Equipment ID No.: 2-2301-35-MO

Equipment Class: (8) Motor-Operated and Solenoid-Operated Valves

Equipment Description: U-2 HPCI PMP DOWNSTREAM TORUS SUCT VLV

Interaction Effects

7. Are soft targets free from impact by nearby equipment or structures? Yes

Pipe insulation in contact with valve body. Judged to be acceptable.

8. Are overhead equipment, distribution systems, ceiling tiles and lighting, and masonry block walls not likely to collapse onto the equipment? Yes

Overhead light fixture with open S-hook. In-place pipe and support prevent adverse interaction. Judged to be acceptable.

9. Do attached lines have adequate flexibility to avoid damage? Yes

10. Based on the above seismic interaction evaluations, is equipment free of potentially adverse seismic interaction effects? Yes

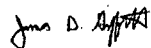
Other Adverse Conditions

11. Have you looked for and found no adverse seismic conditions that could adversely affect the safety functions of the equipment? Yes

Comments

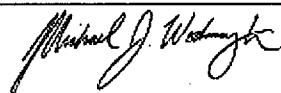
Seismic Walkdown Team: J. Griffith & M. Wodarcyk - 8/9/2012

Evaluated by:



James Griffith

Date: 10/4/2012



Michael Wodarcyk

10/4/2012

Status: Y N U

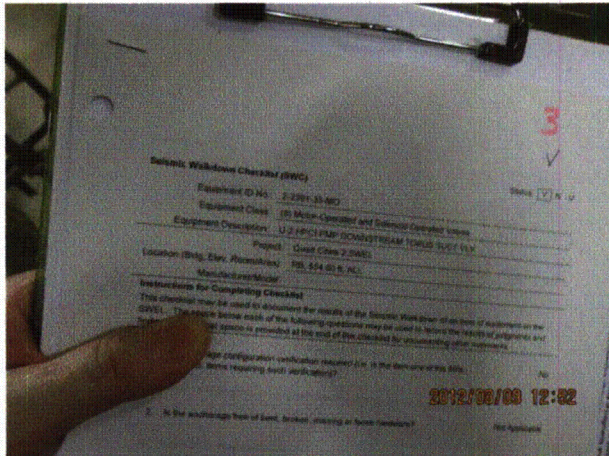
Seismic Walkdown Checklist (SWC)

Equipment ID No.: 2-2301-35-MO

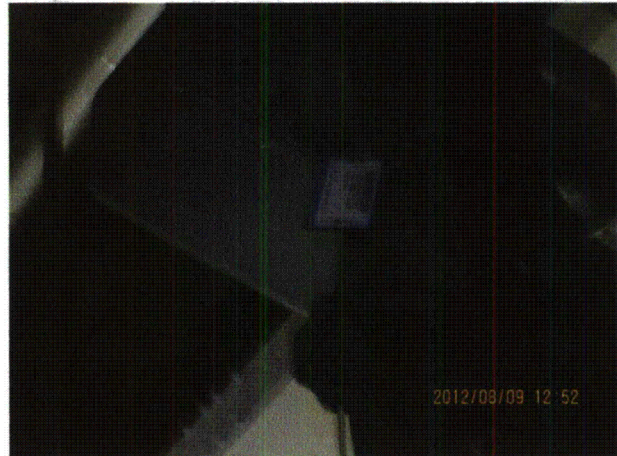
Equipment Class: (8) Motor-Operated and Solenoid-Operated Valves

Equipment Description: U-2 HPCI PMP DOWNSTREAM TORUS SUCT VLV

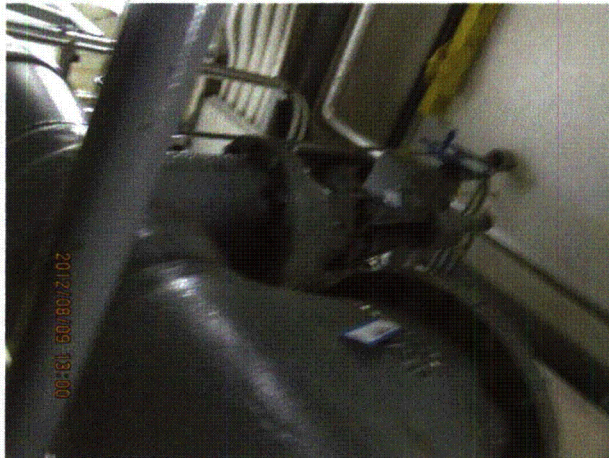
Photos



20120809-QuadCities-2 264



20120809-QuadCities-2 265



20120809-QuadCities-2 266



20120809-QuadCities-2 267

Status: Y N U

Seismic Walkdown Checklist (SWC)

Equipment ID No.: 2-2301-35-MO

Equipment Class: (8) Motor-Operated and Solenoid-Operated Valves

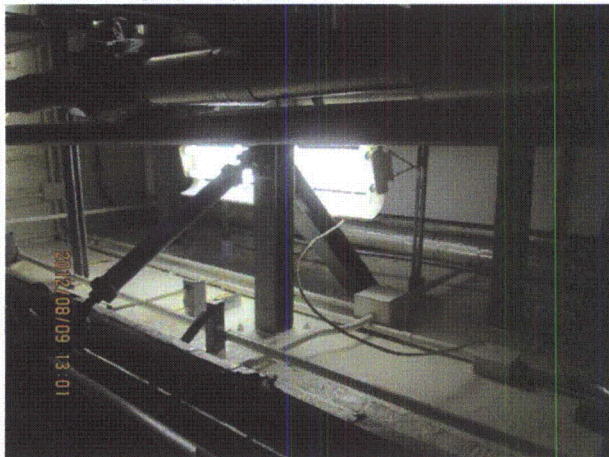
Equipment Description: U-2 HPCI PMP DOWNSTREAM TORUS SUCT VLV



20120809-QuadCities-2 268



20120809-QuadCities-2 269



20120809-QuadCities-2 270



20120809-QuadCities-2 271

Status: Y N U

Seismic Walkdown Checklist (SWC)

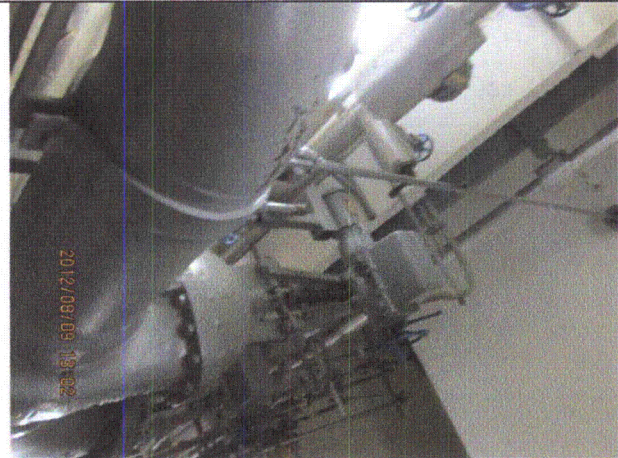
Equipment ID No.: 2-2301-35-MO

Equipment Class: (8) Motor-Operated and Solenoid-Operated Valves

Equipment Description: U-2 HPCI PMP DOWNSTREAM TORUS SUCT VLV



20120809-QuadCities-2 272



20120809-QuadCities-2 273



20120809-QuadCities-2 274



20120809-QuadCities-2 275

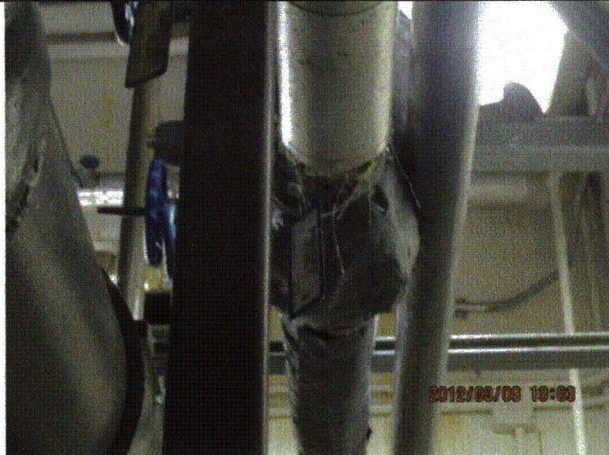
Status: Y N U

Seismic Walkdown Checklist (SWC)

Equipment ID No.: 2-2301-35-MO

Equipment Class: (8) Motor-Operated and Solenoid-Operated Valves

Equipment Description: U-2 HPCI PMP DOWNSTREAM TORUS SUCT VLV



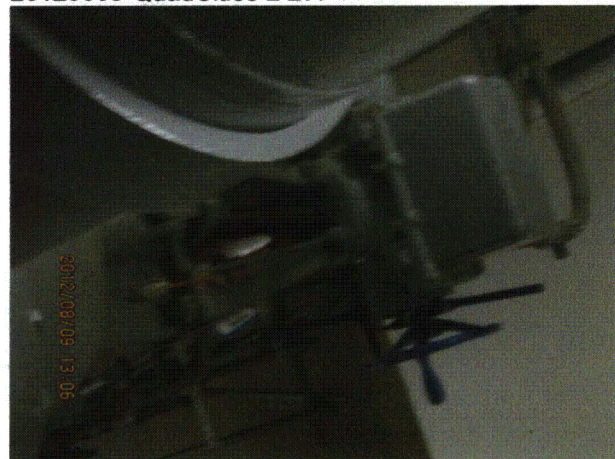
20120809-QuadCities-2 276



20120809-QuadCities-2 277



20120809-QuadCities-2 278



20120809-QuadCities-2 279

Status: Y N U

Seismic Walkdown Checklist (SWC)

Equipment ID No.: 2-2301-3-MO

Equipment Class: (8) Motor-Operated and Solenoid-Operated Valves

Equipment Description: U-2 HPCI TURB INLET VLV

Project: Quad Cities 2 SWEL

Location (Bldg, Elev, Room/Area): RB, 554.00 ft, ALL

Manufacturer/Model:

Instructions for Completing Checklist

This checklist may be used to document the results of the Seismic Walkdown of an item of equipment on the SWEL. The space below each of the following questions may be used to record the results of judgments and findings. Additional space is provided at the end of this checklist for documenting other comments.

Anchorage

1. Is anchorage configuration verification required (i.e., is the item one of the 50% of SWEL items requiring such verification)? No

2. Is the anchorage free of bent, broken, missing or loose hardware? Not Applicable

3. Is the anchorage free of corrosion that is more than mild surface oxidation? Not Applicable

4. Is the anchorage free of visible cracks in the concrete near the anchors? Not Applicable

5. Is the anchorage configuration consistent with plant documentation? (Note: This question only applies if the item is one of the 50% for which an anchorage configuration verification is required.) Not Applicable

6. Based on the above anchorage evaluations, is the anchorage free of potentially adverse seismic conditions? Yes

Interaction Effects

7. Are soft targets free from impact by nearby equipment or structures? Yes

Status: Y N U

Seismic Walkdown Checklist (SWC)

Equipment ID No.: 2-2301-3-MO

Equipment Class: (8) Motor-Operated and Solenoid-Operated Valves

Equipment Description: U-2 HPCI TURB INLET VLV

8. Are overhead equipment, distribution systems, ceiling tiles and lighting, and masonry block walls not likely to collapse onto the equipment? Yes
Valve is located above light fixtures.
9. Do attached lines have adequate flexibility to avoid damage? Yes
10. Based on the above seismic interaction evaluations, is equipment free of potentially adverse seismic interaction effects? Yes

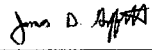
Other Adverse Conditions

11. Have you looked for and found no adverse seismic conditions that could adversely affect the safety functions of the equipment? Yes

Comments

Seismic Walkdown Team: J. Griffith & M. Wodarczyk - 8/9/2012

Evaluated by:

 James Griffith

Date: 10/4/2012



Michael Wodarczyk

10/4/2012

Status: Y N U

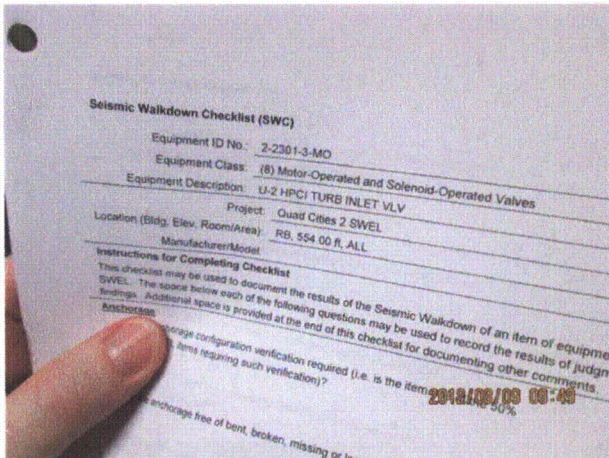
Seismic Walkdown Checklist (SWC)

Equipment ID No.: 2-2301-3-MO

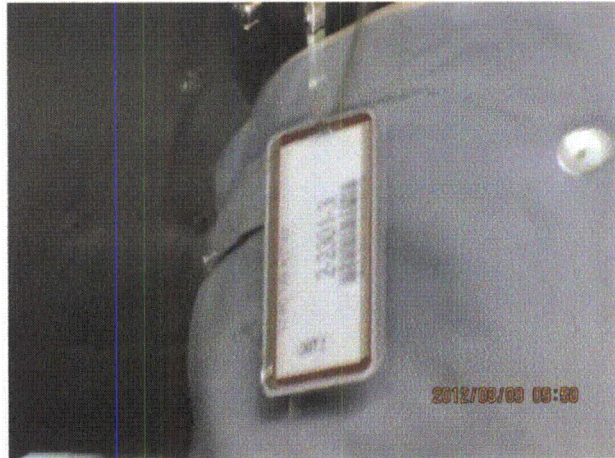
Equipment Class: (8) Motor-Operated and Solenoid-Operated Valves

Equipment Description: U-2 HPCI TURB INLET VLV

Photos



20120809-QuadCities-2 146



20120809-QuadCities-2 147



20120809-QuadCities-2 148



20120809-QuadCities-2 149

Status: Y N U

Seismic Walkdown Checklist (SWC)

Equipment ID No.: 2-2301-3-MO

Equipment Class: (8) Motor-Operated and Solenoid-Operated Valves

Equipment Description: U-2 HPCI TURB INLET VLV



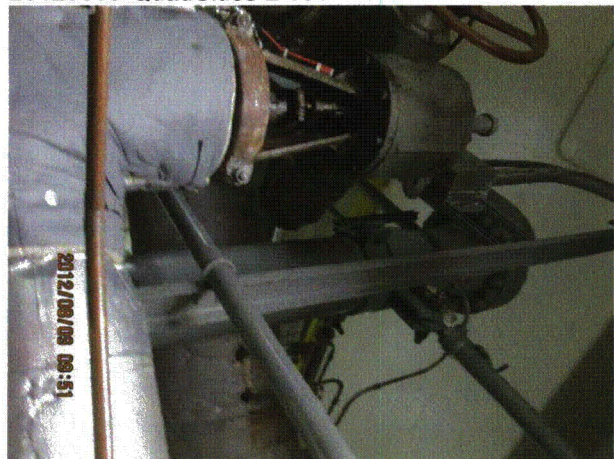
20120809-QuadCities-2 150



20120809-QuadCities-2 151



20120809-QuadCities-2 152



20120809-QuadCities-2 153

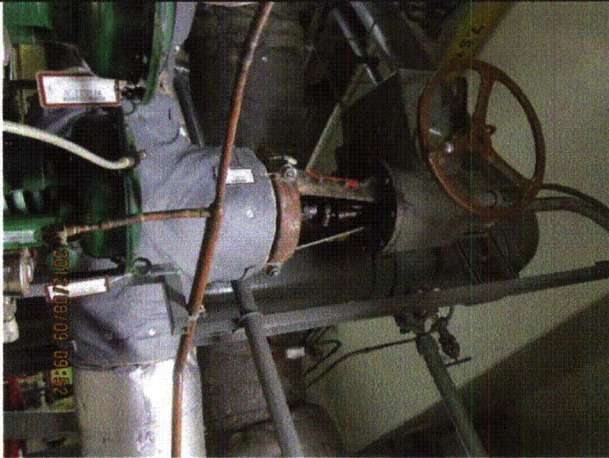
Status: Y N U

Seismic Walkdown Checklist (SWC)

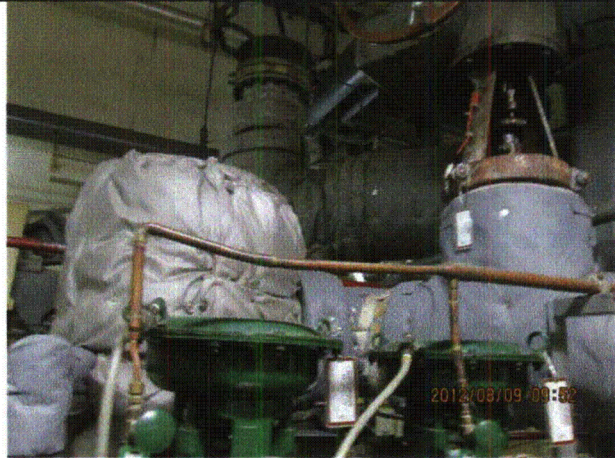
Equipment ID No.: 2-2301-3-MO

Equipment Class: (8) Motor-Operated and Solenoid-Operated Valves

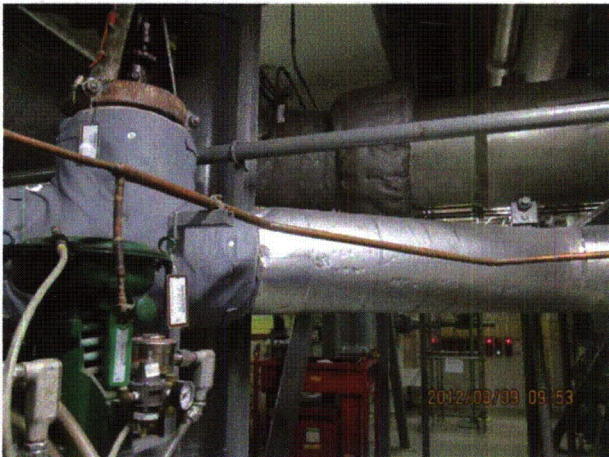
Equipment Description: U-2 HPCI TURB INLET VLV



20120809-QuadCities-2 154



20120809-QuadCities-2 155



20120809-QuadCities-2 156



20120809-QuadCities-2 157

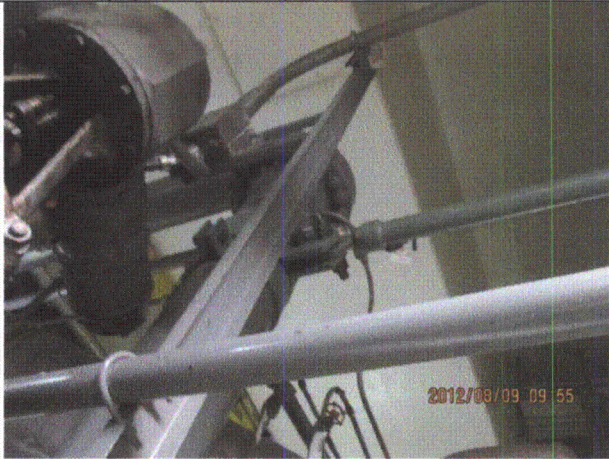
Status: Y N U

Seismic Walkdown Checklist (SWC)

Equipment ID No.: 2-2301-3-MO

Equipment Class: (8) Motor-Operated and Solenoid-Operated Valves

Equipment Description: U-2 HPCI TURB INLET VLV



20120809-QuadCities-2 158

Status: Y N U

Seismic Walkdown Checklist (SWC)

Equipment ID No.: 2-2301-49-MO

Equipment Class: (8) Motor-Operated and Solenoid-Operated Valves

Equipment Description: U-2 HPCI CLG WTR PMP TEST VLV

Project: Quad Cities 2 SWEL

Location (Bldg, Elev, Room/Area): RB, 554.00 ft, ALL

Manufacturer/Model:

Instructions for Completing Checklist

This checklist may be used to document the results of the Seismic Walkdown of an item of equipment on the SWEL. The space below each of the following questions may be used to record the results of judgments and findings. Additional space is provided at the end of this checklist for documenting other comments.

Anchorage

- | | |
|--|----------------|
| 1. Is anchorage configuration verification required (i.e., is the item one of the 50% of SWEL items requiring such verification)? | No |
| 2. Is the anchorage free of bent, broken, missing or loose hardware? | Not Applicable |
| 3. Is the anchorage free of corrosion that is more than mild surface oxidation? | Not Applicable |
| 4. Is the anchorage free of visible cracks in the concrete near the anchors? | Not Applicable |
| 5. Is the anchorage configuration consistent with plant documentation? (Note: This question only applies if the item is one of the 50% for which an anchorage configuration verification is required.) | Not Applicable |
| 6. Based on the above anchorage evaluations, is the anchorage free of potentially adverse seismic conditions? | Yes |

Interaction Effects

- | | |
|---|-----|
| 7. Are soft targets free from impact by nearby equipment or structures? | Yes |
|---|-----|

Status: Y N U

Seismic Walkdown Checklist (SWC)

Equipment ID No.: 2-2301-49-MO

Equipment Class: (8) Motor-Operated and Solenoid-Operated Valves

Equipment Description: U-2 HPCI CLG WTR PMP TEST VLV

8. Are overhead equipment, distribution systems, ceiling tiles and lighting, and masonry block walls not likely to collapse onto the equipment? Yes
Overhead light fixtures judged to be acceptable.
9. Do attached lines have adequate flexibility to avoid damage? Yes
10. Based on the above seismic interaction evaluations, is equipment free of potentially adverse seismic interaction effects? Yes

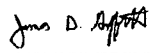
Other Adverse Conditions

11. Have you looked for and found no adverse seismic conditions that could adversely affect the safety functions of the equipment? Yes

Comments

Seismic Walkdown Team: J. Griffith & M. Wodarczyk - 8/9/2012

Evaluated by:

 James Griffith

Date: 10/16/2012



Michael Wodarczyk

10/16/2012

Status: Y N U

Seismic Walkdown Checklist (SWC)

Equipment ID No.: 2-2301-49-MO

Equipment Class: (8) Motor-Operated and Solenoid-Operated Valves

Equipment Description: U-2 HPCI CLG WTR PMP TEST VLV

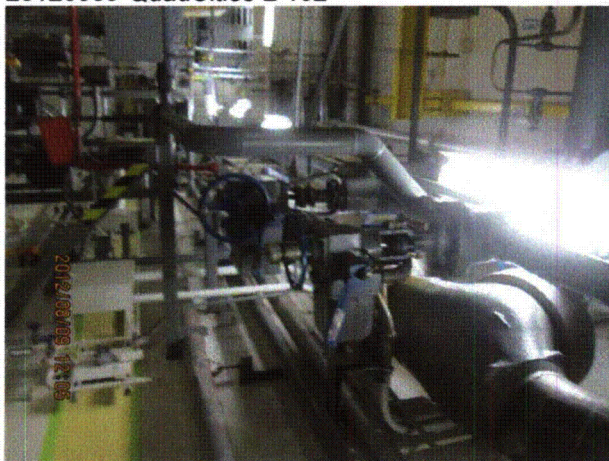
Photos



20120809-QuadCities-2 182



20120809-QuadCities-2 183



20120809-QuadCities-2 184



20120809-QuadCities-2 185

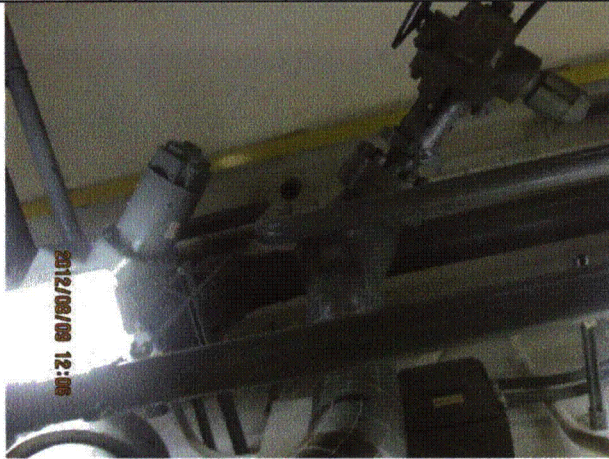
Status: Y N U

Seismic Walkdown Checklist (SWC)

Equipment ID No.: 2-2301-49-MO

Equipment Class: (8) Motor-Operated and Solenoid-Operated Valves

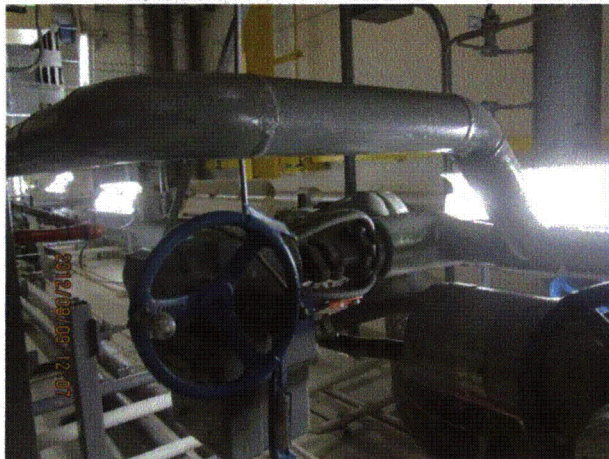
Equipment Description: U-2 HPCI CLG WTR PMP TEST VLV



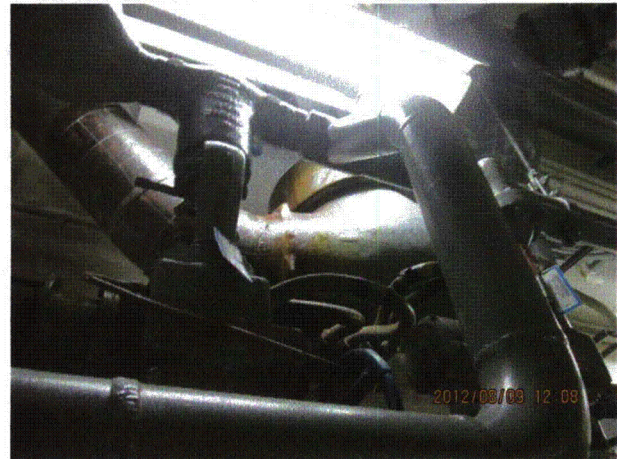
20120809-QuadCities-2 187



20120809-QuadCities-2 188



20120809-QuadCities-2 189



20120809-QuadCities-2 191

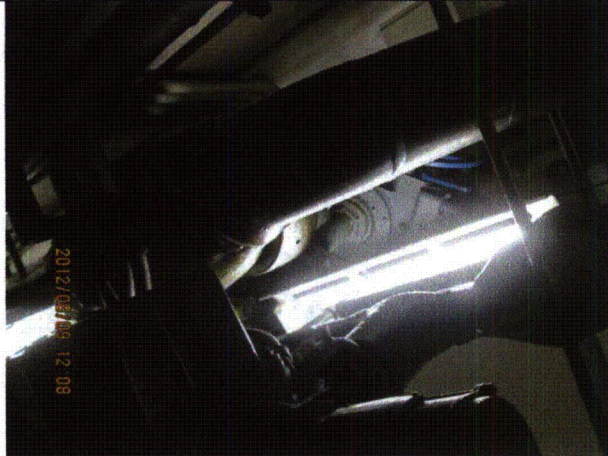
Status: Y N U

Seismic Walkdown Checklist (SWC)

Equipment ID No.: 2-2301-49-MO

Equipment Class: (8) Motor-Operated and Solenoid-Operated Valves

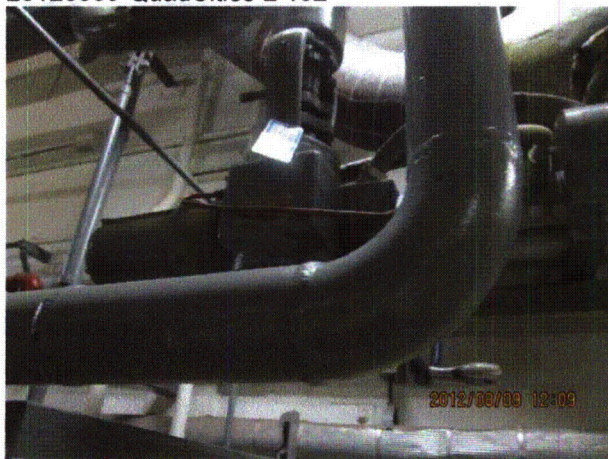
Equipment Description: U-2 HPCI CLG WTR PMP TEST VLV



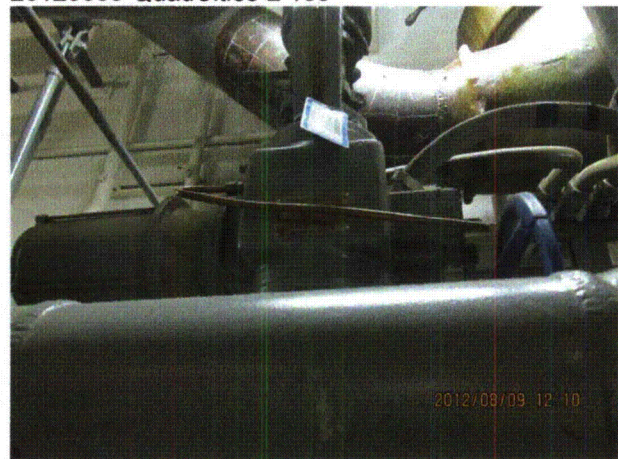
20120809-QuadCities-2 192



20120809-QuadCities-2 193



20120809-QuadCities-2 194



20120809-QuadCities-2 195

Status: Y N U

Seismic Walkdown Checklist (SWC)

Equipment ID No.: 2-2301-49-MO

Equipment Class: (8) Motor-Operated and Solenoid-Operated Valves

Equipment Description: U-2 HPCI CLG WTR PMP TEST VLV



20120809-QuadCities-2 196



20120809-QuadCities-2 197

Status: Y N U

Seismic Walkdown Checklist (SWC)

Equipment ID No.: 2-2301-6-MO

Equipment Class: (8) Motor-Operated and Solenoid-Operated Valves

Equipment Description: U-2 HPCI PMP CCST SUCT VLV

Project: Quad Cities 2 SWEL

Location (Bldg, Elev, Room/Area): RB, 554.00 ft, ALL

Manufacturer/Model:

Instructions for Completing Checklist

This checklist may be used to document the results of the Seismic Walkdown of an item of equipment on the SWEL. The space below each of the following questions may be used to record the results of judgments and findings. Additional space is provided at the end of this checklist for documenting other comments.

Anchorage

1. Is anchorage configuration verification required (i.e., is the item one of the 50% of SWEL items requiring such verification)? No

2. Is the anchorage free of bent, broken, missing or loose hardware? Not Applicable

3. Is the anchorage free of corrosion that is more than mild surface oxidation? Not Applicable

4. Is the anchorage free of visible cracks in the concrete near the anchors? Not Applicable

5. Is the anchorage configuration consistent with plant documentation? (Note: This question only applies if the item is one of the 50% for which an anchorage configuration verification is required.) Not Applicable

6. Based on the above anchorage evaluations, is the anchorage free of potentially adverse seismic conditions? Yes

Status: Y N U

Seismic Walkdown Checklist (SWC)

Equipment ID No.: 2-2301-6-MO

Equipment Class: (8) Motor-Operated and Solenoid-Operated Valves

Equipment Description: U-2 HPCI PMP CCST SUCT VLV

Interaction Effects

7. Are soft targets free from impact by nearby equipment or structures? Yes
Adjacent scaffold is adequately restrained. Clearance to valve is judged to be acceptable.
8. Are overhead equipment, distribution systems, ceiling tiles and lighting, and masonry block walls not likely to collapse onto the equipment? Yes
Overhead light fixture judged to be acceptable.
9. Do attached lines have adequate flexibility to avoid damage? Yes
Flexible conduits near rigidly-supported pipe judged to be acceptable.
10. Based on the above seismic interaction evaluations, is equipment free of potentially adverse seismic interaction effects? Yes

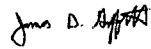
Other Adverse Conditions

11. Have you looked for and found no adverse seismic conditions that could adversely affect the safety functions of the equipment? Yes

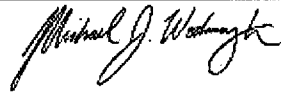
Comments

Seismic Walkdown Team: J. Griffith & M. Wodarcyk - 8/9/2012

Evaluated by:

 James Griffith

Date: 10/4/2012


Michael Wodarcyk

10/4/2012

Status: Y N U

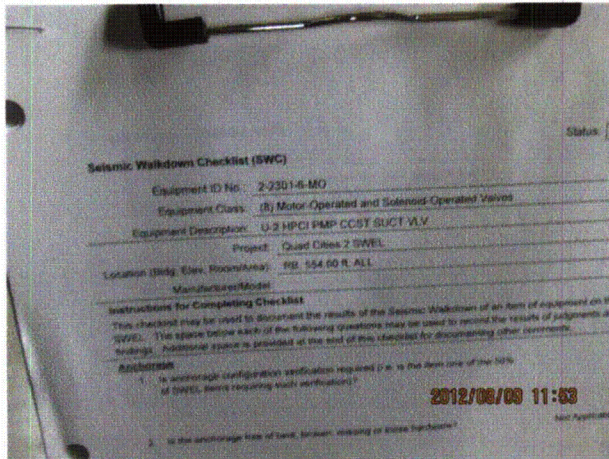
Seismic Walkdown Checklist (SWC)

Equipment ID No.: 2-2301-6-MO

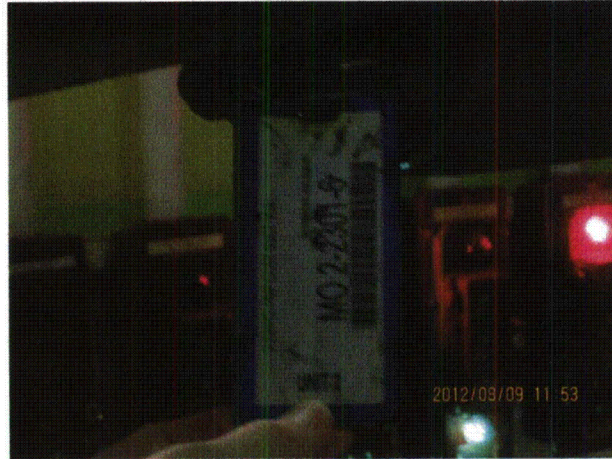
Equipment Class: (8) Motor-Operated and Solenoid-Operated Valves

Equipment Description: U-2 HPCI PMP CCST SUCT VLV

Photos



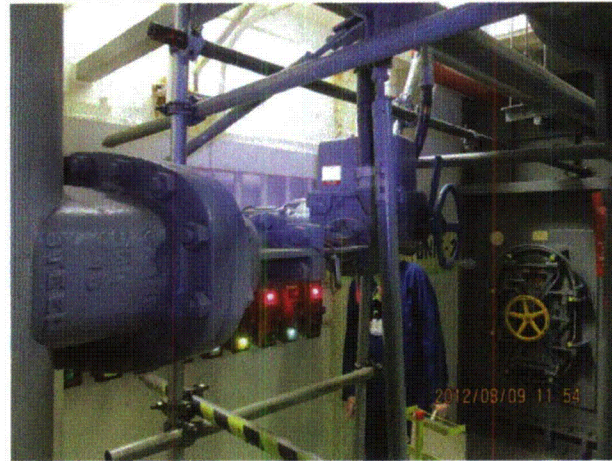
20120809-QuadCities-2 159



20120809-QuadCities-2 160



20120809-QuadCities-2 161



20120809-QuadCities-2 162

Status: Y N U

Seismic Walkdown Checklist (SWC)

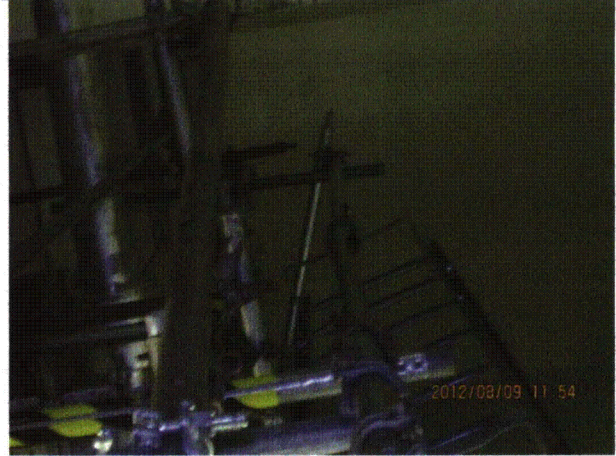
Equipment ID No.: 2-2301-6-MO

Equipment Class: (8) Motor-Operated and Solenoid-Operated Valves

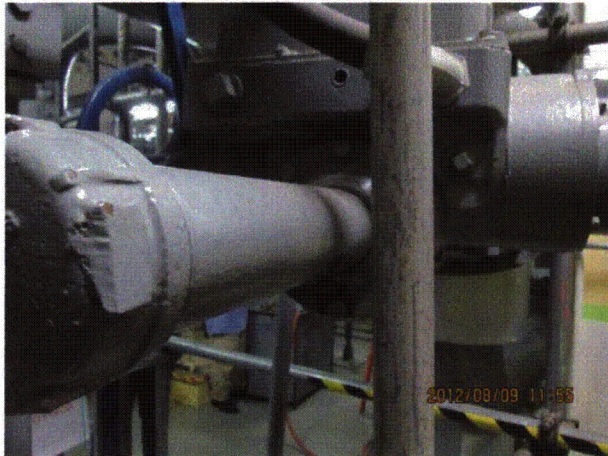
Equipment Description: U-2 HPCI PMP CCST SUCT VLV



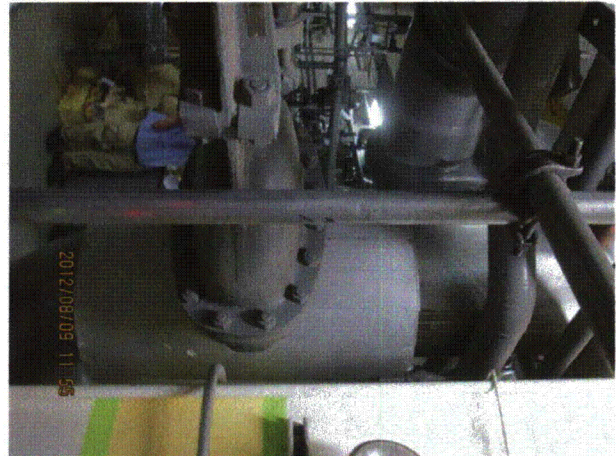
20120809-QuadCities-2 163



20120809-QuadCities-2 164



20120809-QuadCities-2 165



20120809-QuadCities-2 166

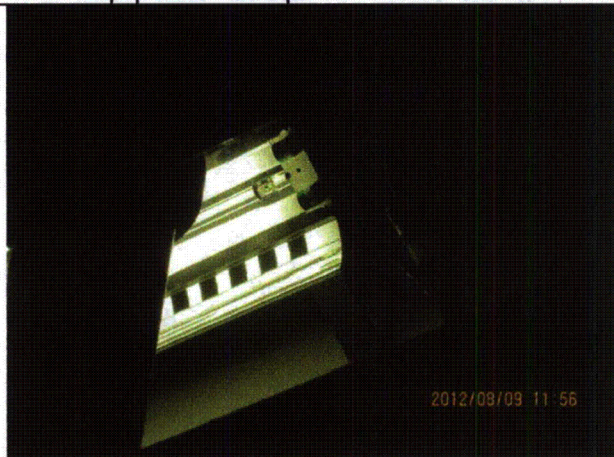
Status: Y N U

Seismic Walkdown Checklist (SWC)

Equipment ID No.: 2-2301-6-MO

Equipment Class: (8) Motor-Operated and Solenoid-Operated Valves

Equipment Description: U-2 HPCI PMP CCST SUCT VLV



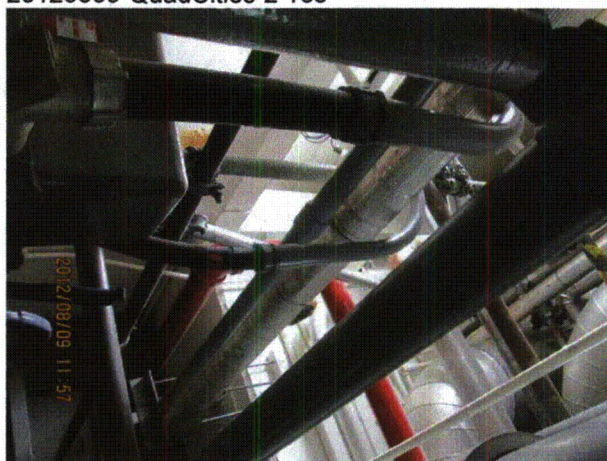
20120809-QuadCities-2 167



20120809-QuadCities-2 168



20120809-QuadCities-2 169



20120809-QuadCities-2 170

Status: Y N U

Seismic Walkdown Checklist (SWC)

Equipment ID No.: 2-2301-6-MO

Equipment Class: (8) Motor-Operated and Solenoid-Operated Valves

Equipment Description: U-2 HPCI PMP CCST SUCT VLV



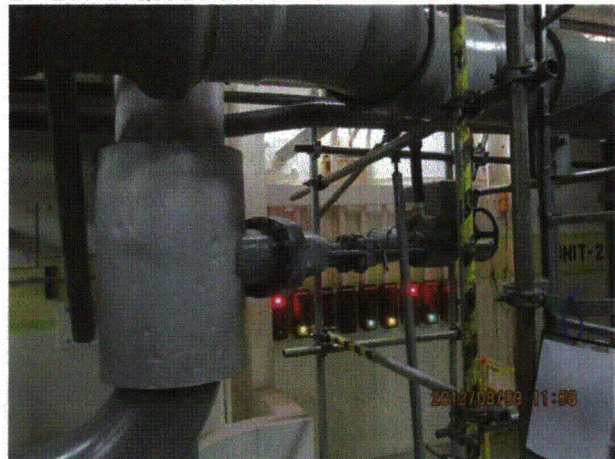
20120809-QuadCities-2 171



20120809-QuadCities-2 172



20120809-QuadCities-2 173



20120809-QuadCities-2 174

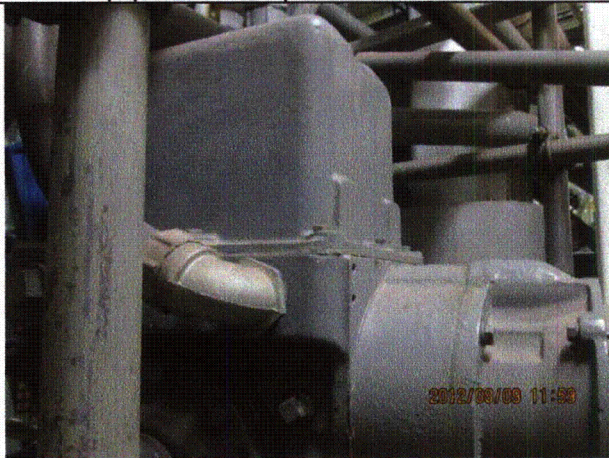
Status: Y N U

Seismic Walkdown Checklist (SWC)

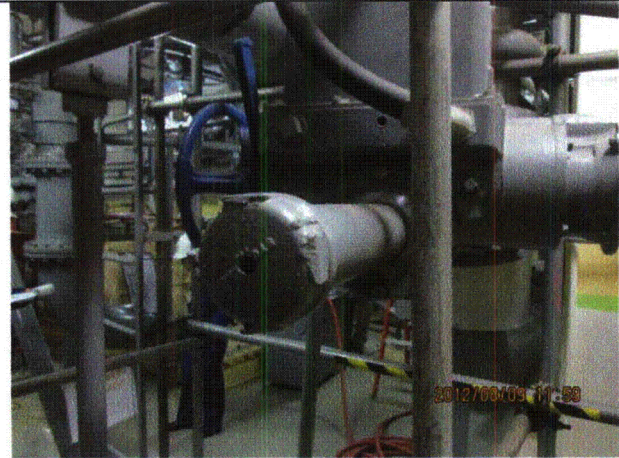
Equipment ID No.: 2-2301-6-MO

Equipment Class: (8) Motor-Operated and Solenoid-Operated Valves

Equipment Description: U-2 HPCI PMP CCST SUCT VLV



20120809-QuadCities-2 175



20120809-QuadCities-2 176



20120809-QuadCities-2 177



20120809-QuadCities-2 178

Status: Y N U

Seismic Walkdown Checklist (SWC)

Equipment ID No.: 2-2301-6-MO

Equipment Class: (8) Motor-Operated and Solenoid-Operated Valves

Equipment Description: U-2 HPCI PMP CCST SUCT VLV



20120809-QuadCities-2 179



20120809-QuadCities-2 180

Status: Y N U

Seismic Walkdown Checklist (SWC)

Equipment ID No.: 2-2302

Equipment Class: (5) Horizontal Pumps

Equipment Description: HPCI/ HPCI Pump

Project: Quad Cities 2 SWEL

Location (Bldg, Elev, Room/Area): RB, 554.00 ft, ALL

Manufacturer/Model:

Instructions for Completing Checklist

This checklist may be used to document the results of the Seismic Walkdown of an item of equipment on the SWEL. The space below each of the following questions may be used to record the results of judgments and findings. Additional space is provided at the end of this checklist for documenting other comments.

Anchorage

1. Is anchorage configuration verification required (i.e., is the item one of the 50% of SWEL items requiring such verification)? Yes

2. Is the anchorage free of bent, broken, missing or loose hardware? Yes

3. Is the anchorage free of corrosion that is more than mild surface oxidation? Yes
Minor skid corrosion judged to be acceptable.

4. Is the anchorage free of visible cracks in the concrete near the anchors? Yes

5. Is the anchorage configuration consistent with plant documentation? (Note: This question only applies if the item is one of the 50% for which an anchorage configuration verification is required.) Yes
Anchorage is shown on drawings M-347, Rev. M and M-358, Rev. J.

6. Based on the above anchorage evaluations, is the anchorage free of potentially adverse seismic conditions? Yes

Status: Y N U

Seismic Walkdown Checklist (SWC)

Equipment ID No.: 2-2302

Equipment Class: (5) Horizontal Pumps

Equipment Description: HPCI/ HPCI Pump

Interaction Effects


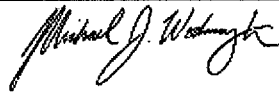
7. Are soft targets free from impact by nearby equipment or structures? Yes
Contact between flexible pipe and tube for booster pump judged to be acceptable.
8. Are overhead equipment, distribution systems, ceiling tiles and lighting, and masonry block walls not likely to collapse onto the equipment? Yes
Overhead light fixtures with open S-hooks. Adjacent hard targets prevent adverse interaction; judged to be acceptable.
9. Do attached lines have adequate flexibility to avoid damage? Yes
10. Based on the above seismic interaction evaluations, is equipment free of potentially adverse seismic interaction effects? Yes

Other Adverse Conditions

11. Have you looked for and found no adverse seismic conditions that could adversely affect the safety functions of the equipment? Yes

Comments

Seismic Walkdown Team: J. Griffith & M. Wodarczyk - 8/9/2012

Evaluated by:  James Griffith Date: 10/16/2012
 Michael Wodarczyk 10/16/2012

Status: Y N U

Seismic Walkdown Checklist (SWC)

Equipment ID No.: 2-2302

Equipment Class: (5) Horizontal Pumps

Equipment Description: HPCI/ HPCI Pump

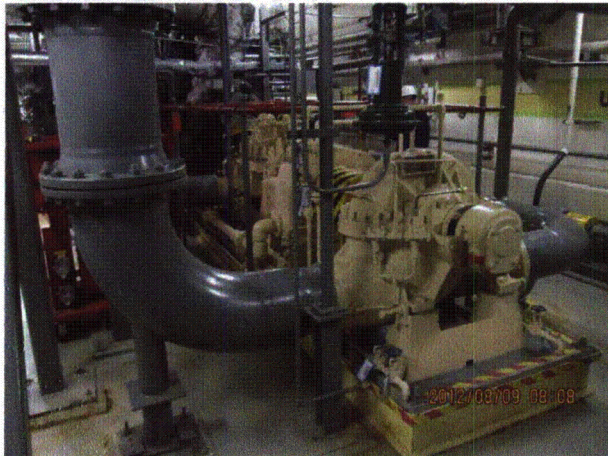
Photos



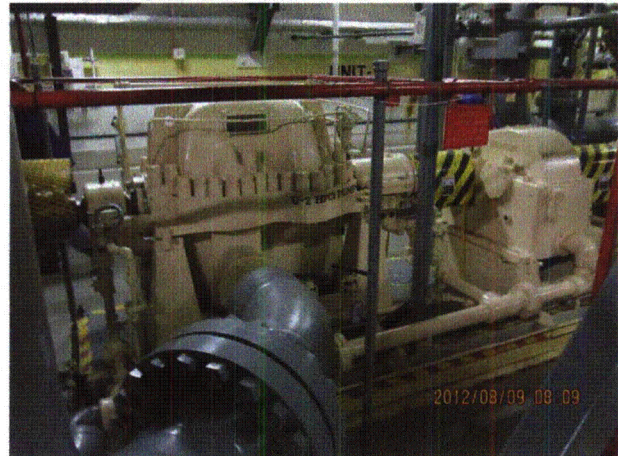
20120809-QuadCities-2 002



20120809-QuadCities-2 003



20120809-QuadCities-2 004



20120809-QuadCities-2 005

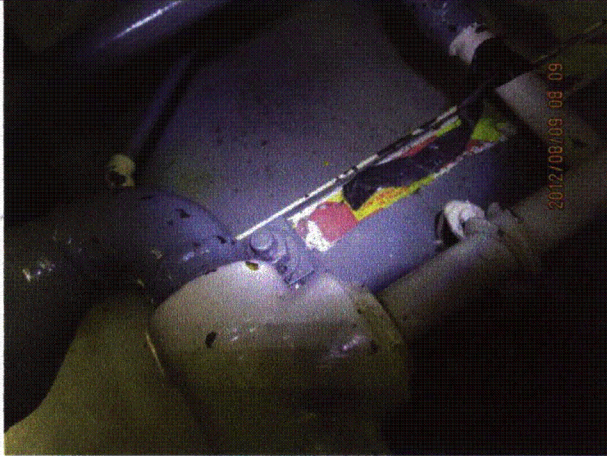
Status: Y N U

Seismic Walkdown Checklist (SWC)

Equipment ID No.: 2-2302

Equipment Class: (5) Horizontal Pumps

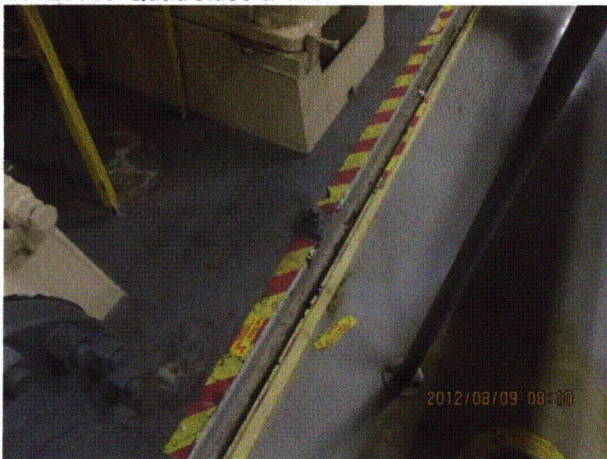
Equipment Description: HPCI/ HPCI Pump



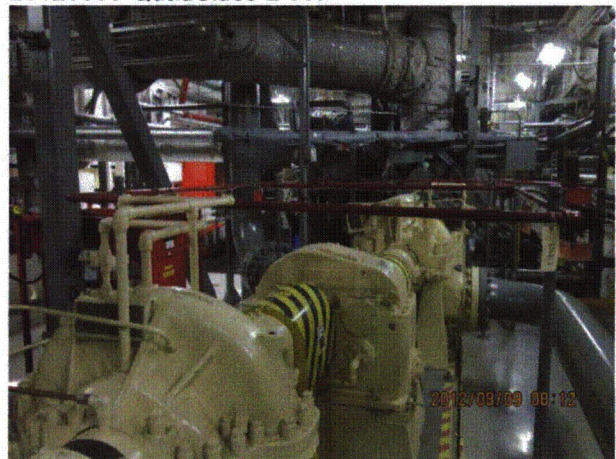
20120809-QuadCities-2 006



20120809-QuadCities-2 007



20120809-QuadCities-2 008



20120809-QuadCities-2 009

Status: Y N U

Seismic Walkdown Checklist (SWC)

Equipment ID No.: 2-2302

Equipment Class: (5) Horizontal Pumps

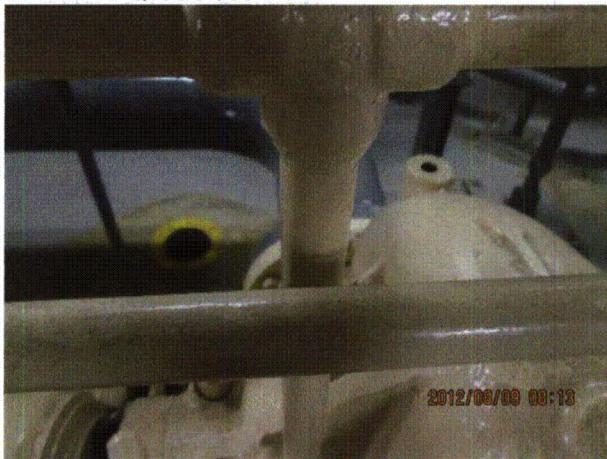
Equipment Description: HPCI/ HPCI Pump



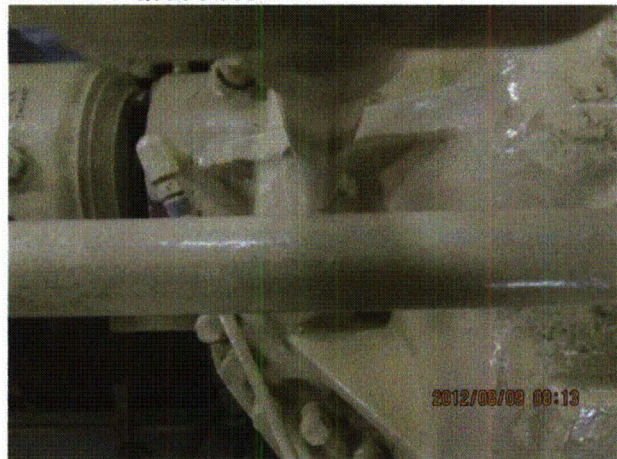
20120809-QuadCities-2 010



20120809-QuadCities-2 011



20120809-QuadCities-2 012



20120809-QuadCities-2 013

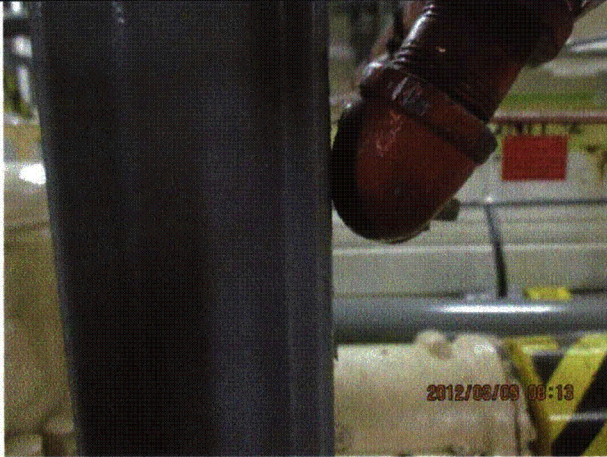
Status: Y N U

Seismic Walkdown Checklist (SWC)

Equipment ID No.: 2-2302

Equipment Class: (5) Horizontal Pumps

Equipment Description: HPCI/ HPCI Pump



20120809-QuadCities-2 014



20120809-QuadCities-2 015



20120809-QuadCities-2 016



20120809-QuadCities-2 017

Status: Y N U

Seismic Walkdown Checklist (SWC)

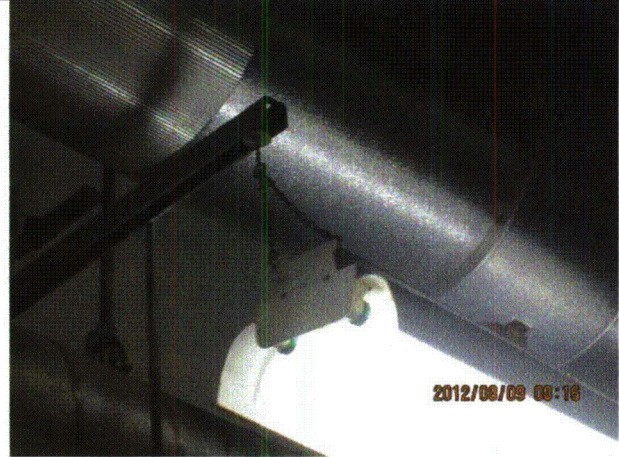
Equipment ID No.: 2-2302

Equipment Class: (5) Horizontal Pumps

Equipment Description: HPCI/ HPCI Pump



20120809-QuadCities-2 018



20120809-QuadCities-2 019



20120809-QuadCities-2 020



20120809-QuadCities-2 021

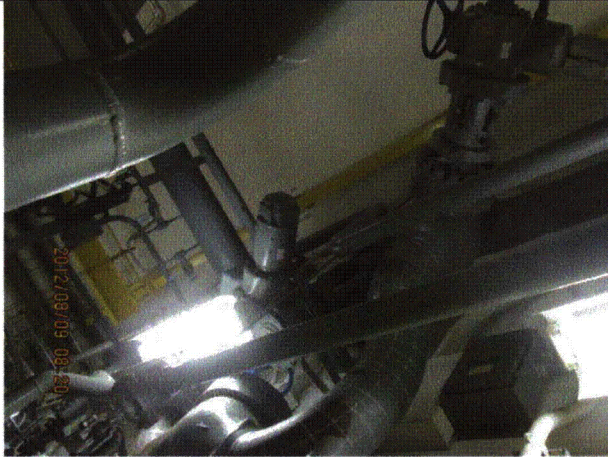
Status: Y N U

Seismic Walkdown Checklist (SWC)

Equipment ID No.: 2-2302

Equipment Class: (5) Horizontal Pumps

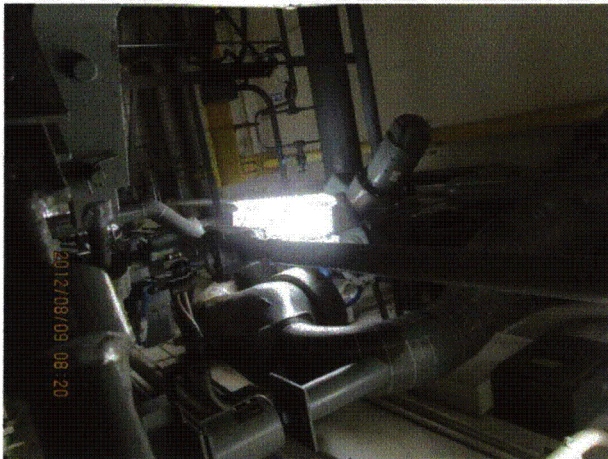
Equipment Description: HPCI/ HPCI Pump



20120809-QuadCities-2 022



20120809-QuadCities-2 023



20120809-QuadCities-2 024



20120809-QuadCities-2 025

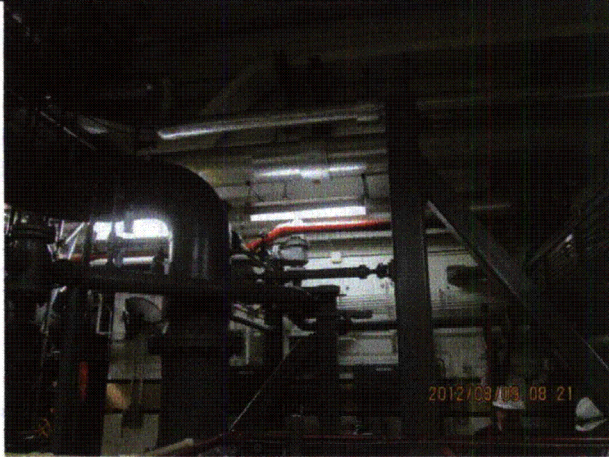
Status: Y N U

Seismic Walkdown Checklist (SWC)

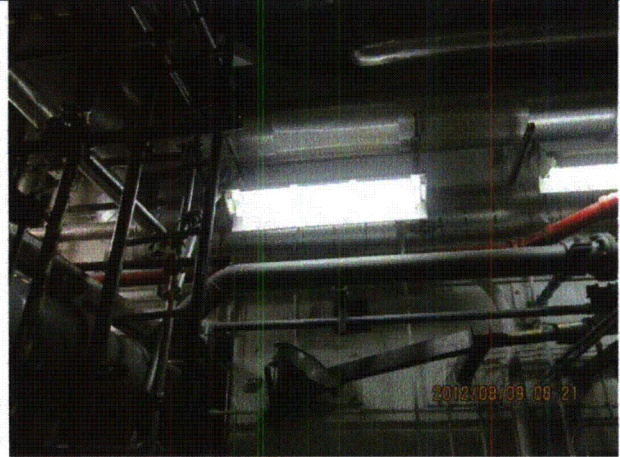
Equipment ID No.: 2-2302

Equipment Class: (5) Horizontal Pumps

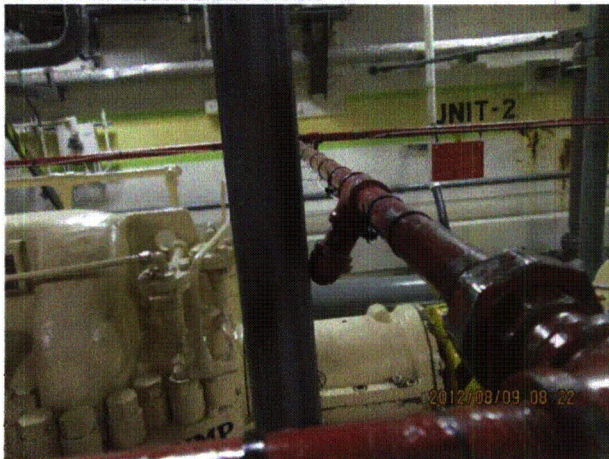
Equipment Description: HPCI/ HPCI Pump



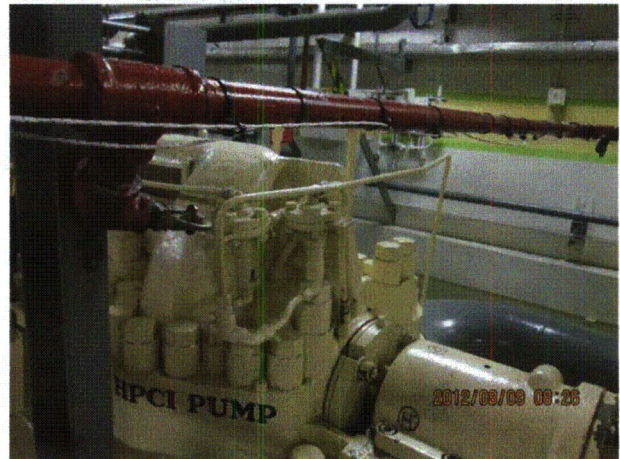
20120809-QuadCities-2 026



20120809-QuadCities-2 027



20120809-QuadCities-2 028



20120809-QuadCities-2 030

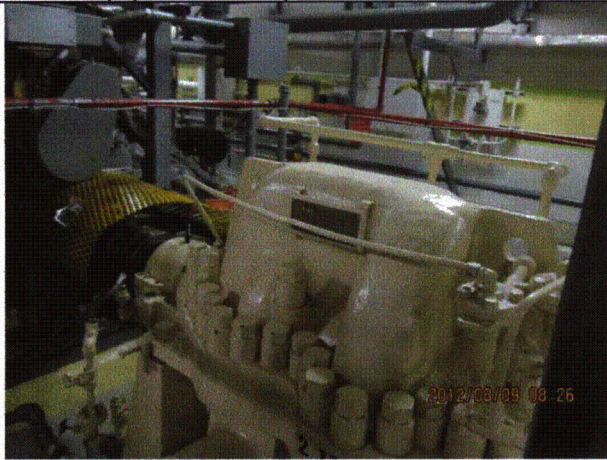
Status: Y N U

Seismic Walkdown Checklist (SWC)

Equipment ID No.: 2-2302

Equipment Class: (5) Horizontal Pumps

Equipment Description: HPCI/ HPCI Pump



20120809-QuadCities-2 031



20120809-QuadCities-2 032

Status: Y N U

Seismic Walkdown Checklist (SWC)

Equipment ID No.: 2-2304

Equipment Class: (5) Horizontal Pumps

Equipment Description: PUMP U-2 HPCI CONDENSATE

Project: Quad Cities 2 SWEL

Location (Bldg, Elev, Room/Area): RB, 554.00 ft, ALL

Manufacturer/Model:

Instructions for Completing Checklist

This checklist may be used to document the results of the Seismic Walkdown of an item of equipment on the SWEL. The space below each of the following questions may be used to record the results of judgments and findings. Additional space is provided at the end of this checklist for documenting other comments.

Anchorage

1. Is anchorage configuration verification required (i.e., is the item one of the 50% of SWEL items requiring such verification)? No

2. Is the anchorage free of bent, broken, missing or loose hardware? Yes

3. Is the anchorage free of corrosion that is more than mild surface oxidation? Yes
Minor surface corrosion judged to be acceptable.

4. Is the anchorage free of visible cracks in the concrete near the anchors? Yes
Minor shrinkage cracks in pump support pad judged to be acceptable.

5. Is the anchorage configuration consistent with plant documentation? (Note: This question only applies if the item is one of the 50% for which an anchorage configuration verification is required.) Not Applicable

6. Based on the above anchorage evaluations, is the anchorage free of potentially adverse seismic conditions? Yes

Status: Y N U

Seismic Walkdown Checklist (SWC)

Equipment ID No.: 2-2304

Equipment Class: (5) Horizontal Pumps

Equipment Description: PUMP U-2 HPCI CONDENSATE

Interaction Effects

7. Are soft targets free from impact by nearby equipment or structures? Yes
8. Are overhead equipment, distribution systems, ceiling tiles and lighting, and masonry block walls not likely to collapse onto the equipment? Yes
Adjacent scaffold adequately restrained, judged to be acceptable.
9. Do attached lines have adequate flexibility to avoid damage? Yes
10. Based on the above seismic interaction evaluations, is equipment free of potentially adverse seismic interaction effects? Yes

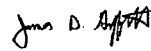
Other Adverse Conditions

11. Have you looked for and found no adverse seismic conditions that could adversely affect the safety functions of the equipment? Yes

Comments

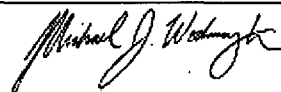
Seismic Walkdown Team: J. Griffith & M. Wodarczyk - 8/9/2012

Evaluated by:



James Griffith

Date: 10/4/2012



Michael Wodarczyk

10/4/2012

Status: Y N U

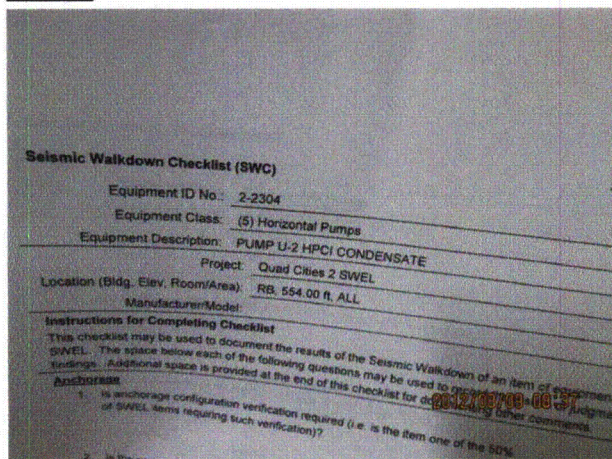
Seismic Walkdown Checklist (SWC)

Equipment ID No.: 2-2304

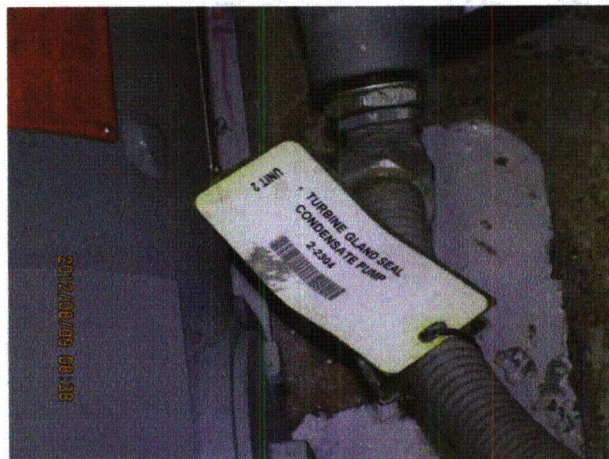
Equipment Class: (5) Horizontal Pumps

Equipment Description: PUMP U-2 HPCI CONDENSATE

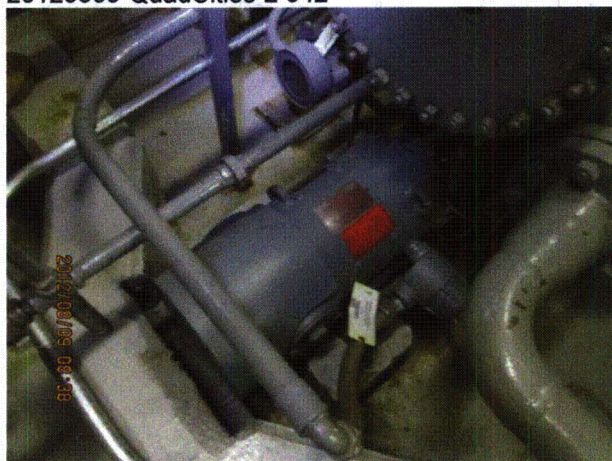
Photos



20120809-QuadCities-2 042



20120809-QuadCities-2 043



20120809-QuadCities-2 044



20120809-QuadCities-2 045

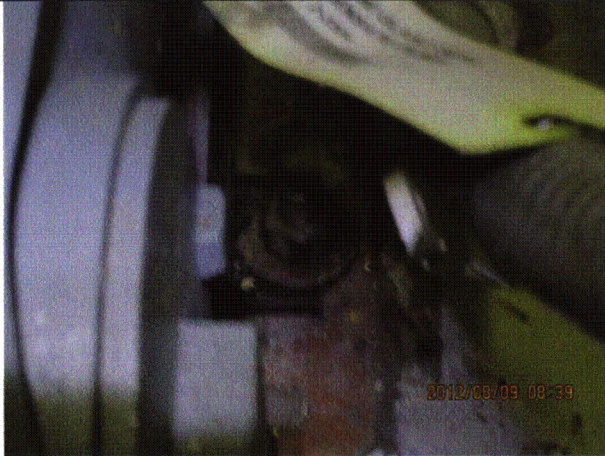
Status: Y N U

Seismic Walkdown Checklist (SWC)

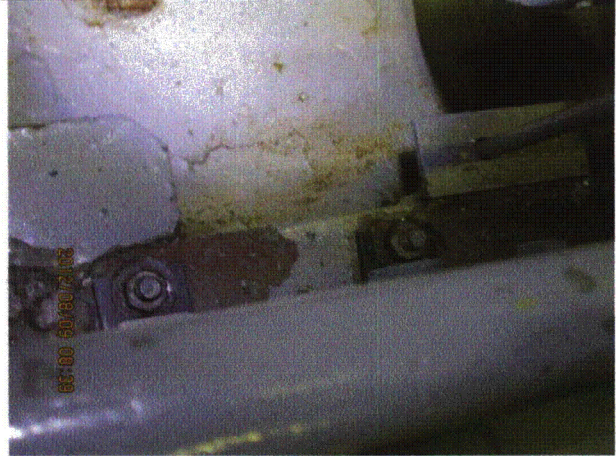
Equipment ID No.: 2-2304

Equipment Class: (5) Horizontal Pumps

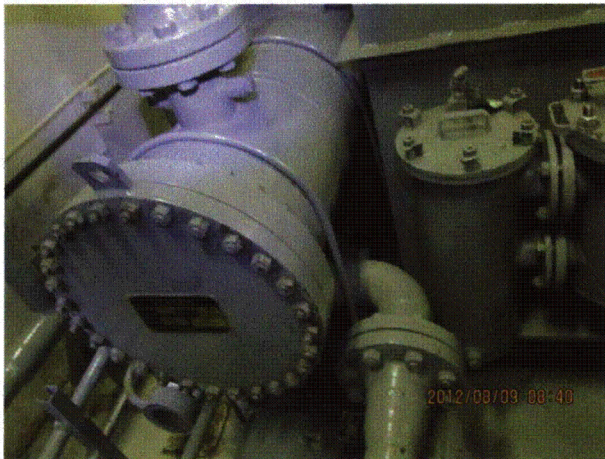
Equipment Description: PUMP U-2 HPCI CONDENSATE



20120809-QuadCities-2 046



20120809-QuadCities-2 047



20120809-QuadCities-2 048



20120809-QuadCities-2 049

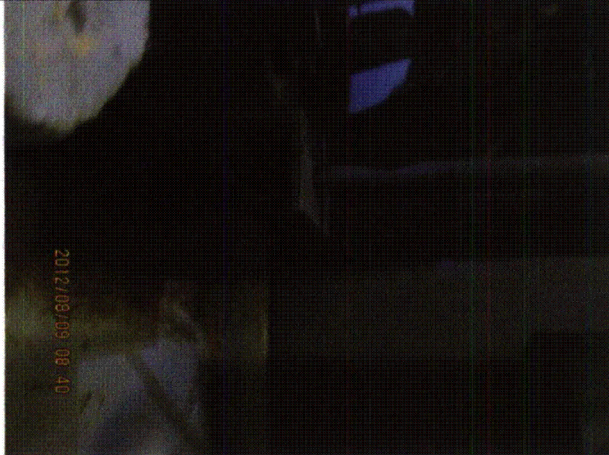
Status: Y N U

Seismic Walkdown Checklist (SWC)

Equipment ID No.: 2-2304

Equipment Class: (5) Horizontal Pumps

Equipment Description: PUMP U-2 HPCI CONDENSATE



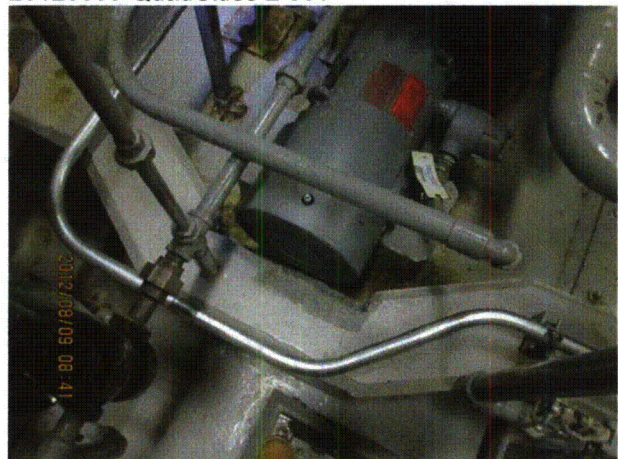
20120809-QuadCities-2 050



20120809-QuadCities-2 051



20120809-QuadCities-2 052



20120809-QuadCities-2 053

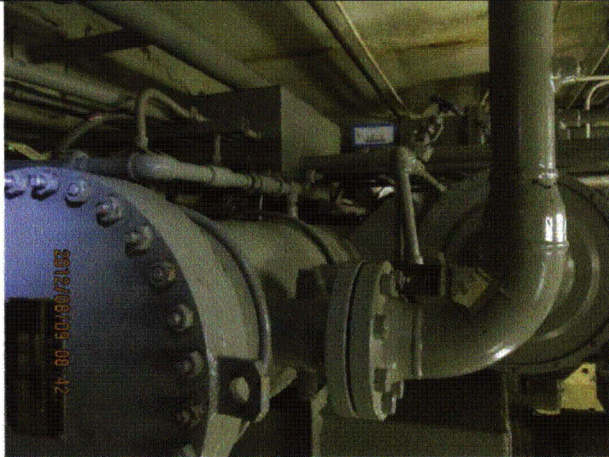
Status: Y N U

Seismic Walkdown Checklist (SWC)

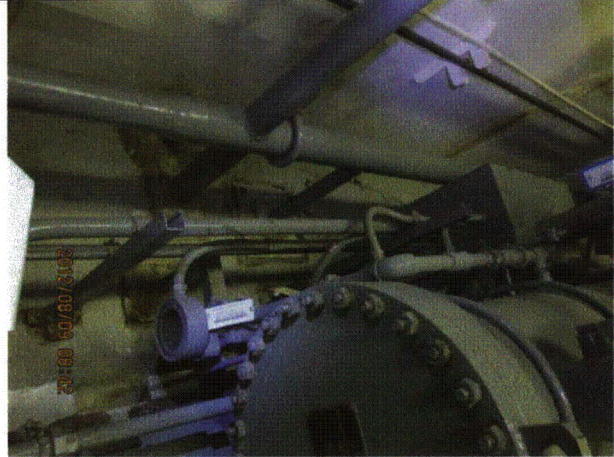
Equipment ID No.: 2-2304

Equipment Class: (5) Horizontal Pumps

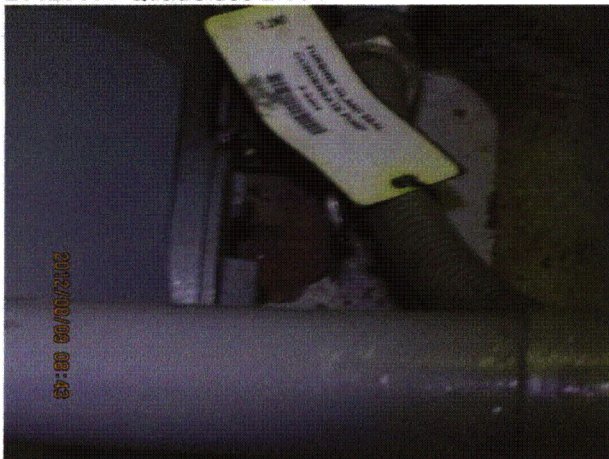
Equipment Description: PUMP U-2 HPCI CONDENSATE



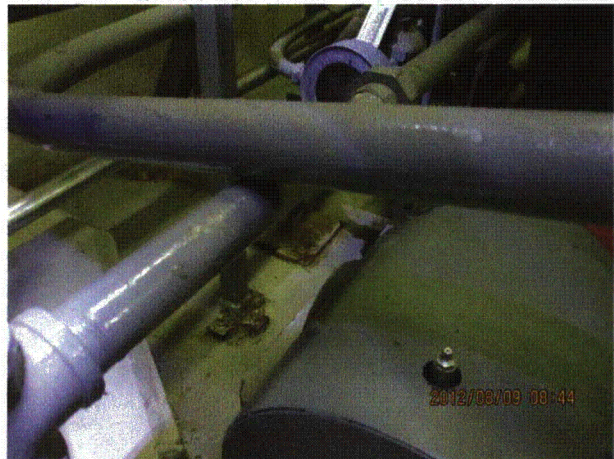
20120809-QuadCities-2 054



20120809-QuadCities-2 055



20120809-QuadCities-2 056



20120809-QuadCities-2 057

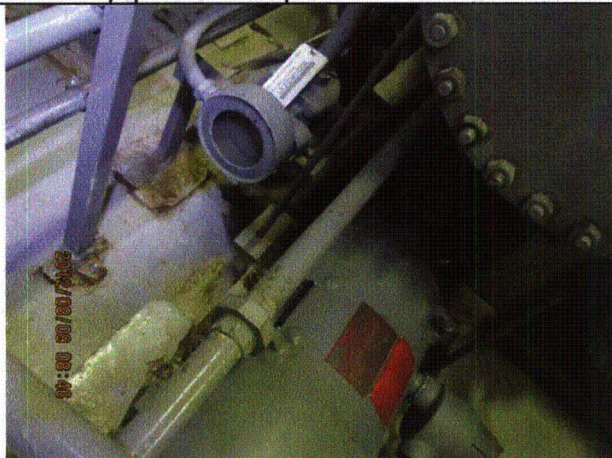
Status: Y N U

Seismic Walkdown Checklist (SWC)

Equipment ID No.: 2-2304

Equipment Class: (5) Horizontal Pumps

Equipment Description: PUMP U-2 HPCI CONDENSATE



20120809-QuadCities-2 058



20120809-QuadCities-2 059



20120809-QuadCities-2 060



20120809-QuadCities-2 061

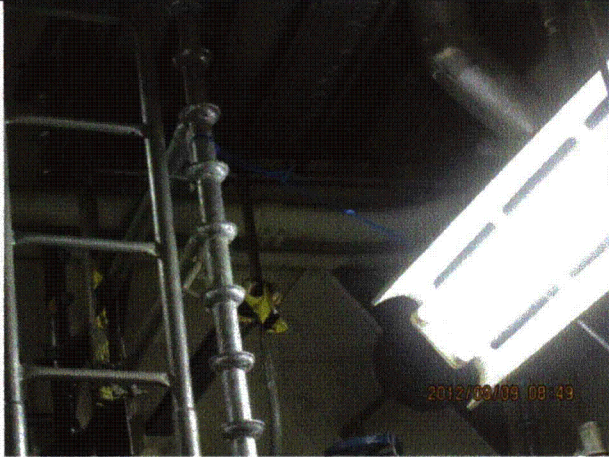
Status: Y N U

Seismic Walkdown Checklist (SWC)

Equipment ID No.: 2-2304

Equipment Class: (5) Horizontal Pumps

Equipment Description: PUMP U-2 HPCI CONDENSATE



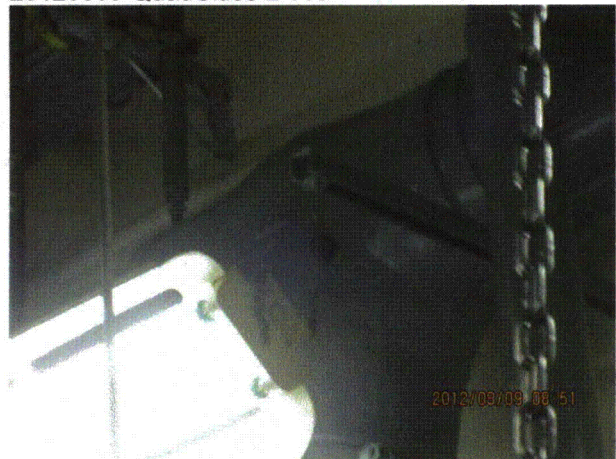
20120809-QuadCities-2 062



20120809-QuadCities-2 063



20120809-QuadCities-2 064



20120809-QuadCities-2 065

Status: Y N U

Seismic Walkdown Checklist (SWC)

Equipment ID No.: 2-2308

Equipment Class: (5) Horizontal Pumps

Equipment Description: AUXILIARY OIL PUMP (HPCI TURBINE)

Project: Quad Cities 2 SWEL

Location (Bldg, Elev, Room/Area): RB, 554.00 ft, ALL

Manufacturer/Model:

Instructions for Completing Checklist

This checklist may be used to document the results of the Seismic Walkdown of an item of equipment on the SWEL. The space below each of the following questions may be used to record the results of judgments and findings. Additional space is provided at the end of this checklist for documenting other comments.

Anchorage

1. Is anchorage configuration verification required (i.e., is the item one of the 50% of SWEL items requiring such verification)? No
Pump motor is visible. Pump is submerged in oil in a confined space.

2. Is the anchorage free of bent, broken, missing or loose hardware? Yes

3. Is the anchorage free of corrosion that is more than mild surface oxidation? Yes

4. Is the anchorage free of visible cracks in the concrete near the anchors? Not Applicable
Pump motor mounted to turbine skid checkered plate.

5. Is the anchorage configuration consistent with plant documentation? (Note: This question only applies if the item is one of the 50% for which an anchorage configuration verification is required.) Not Applicable

6. Based on the above anchorage evaluations, is the anchorage free of potentially adverse seismic conditions? Yes

Interaction Effects

7. Are soft targets free from impact by nearby equipment or structures? Yes

Status: Y N U

Seismic Walkdown Checklist (SWC)

Equipment ID No.: 2-2308

Equipment Class: (5) Horizontal Pumps

Equipment Description: AUXILIARY OIL PUMP (HPCI TURBINE)

8. Are overhead equipment, distribution systems, ceiling tiles and lighting, and masonry block walls not likely to collapse onto the equipment?
Overhead light fixtures judged to be acceptable. Yes
9. Do attached lines have adequate flexibility to avoid damage? Yes
10. Based on the above seismic interaction evaluations, is equipment free of potentially adverse seismic interaction effects? Yes

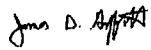
Other Adverse Conditions

11. Have you looked for and found no adverse seismic conditions that could adversely affect the safety functions of the equipment? Yes

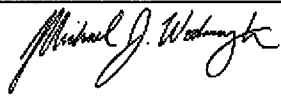
Comments

Seismic Walkdown Team: J. Griffith & M. Wodarczyk - 8/9/2012

Evaluated by:

 James Griffith

Date: 10/16/2012


Michael Wodarczyk

10/16/2012

Status: Y N U

Seismic Walkdown Checklist (SWC)

Equipment ID No.: 2-2308

Equipment Class: (5) Horizontal Pumps

Equipment Description: AUXILIARY OIL PUMP (HPCI TURBINE)

Photos



20120809-QuadCities-2 067



20120809-QuadCities-2 068



20120809-QuadCities-2 069



20120809-QuadCities-2 070

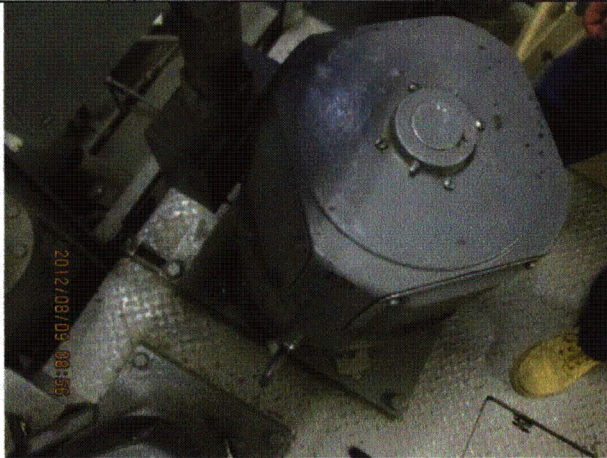
Status: Y N U

Seismic Walkdown Checklist (SWC)

Equipment ID No.: 2-2308

Equipment Class: (5) Horizontal Pumps

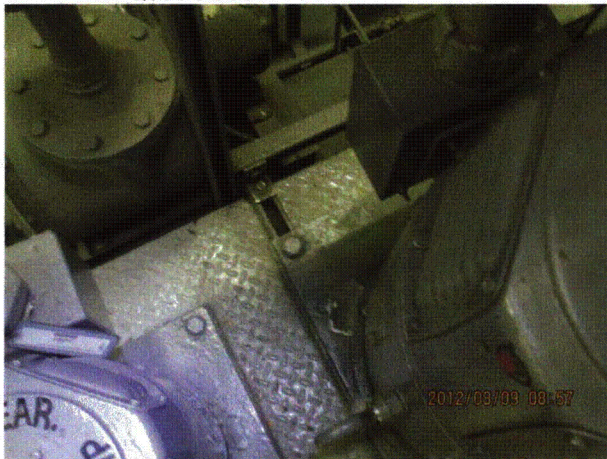
Equipment Description: AUXILIARY OIL PUMP (HPCI TURBINE)



20120809-QuadCities-2 071



20120809-QuadCities-2 072



20120809-QuadCities-2 073



20120809-QuadCities-2 074

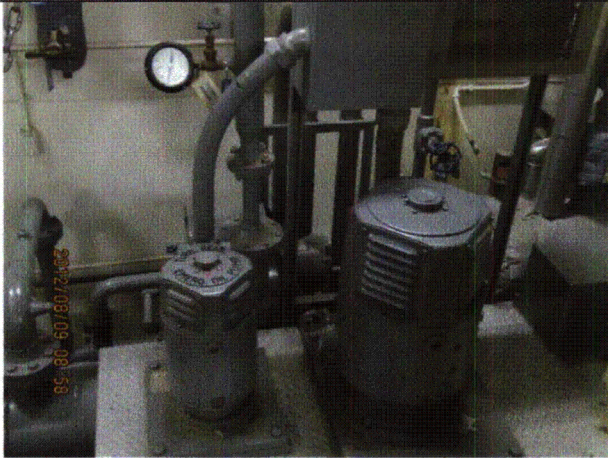
Status: Y N U

Seismic Walkdown Checklist (SWC)

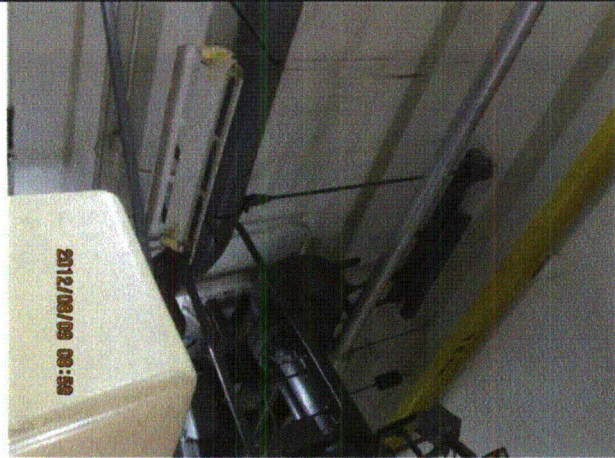
Equipment ID No.: 2-2308

Equipment Class: (5) Horizontal Pumps

Equipment Description: AUXILIARY OIL PUMP (HPCI TURBINE)



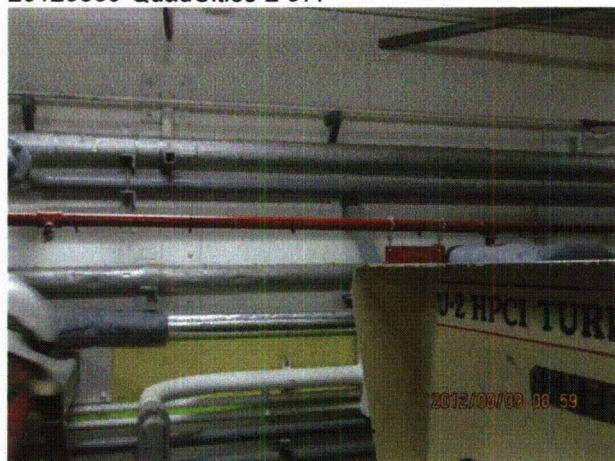
20120809-QuadCities-2 075



20120809-QuadCities-2 077



20120809-QuadCities-2 078



20120809-QuadCities-2 079

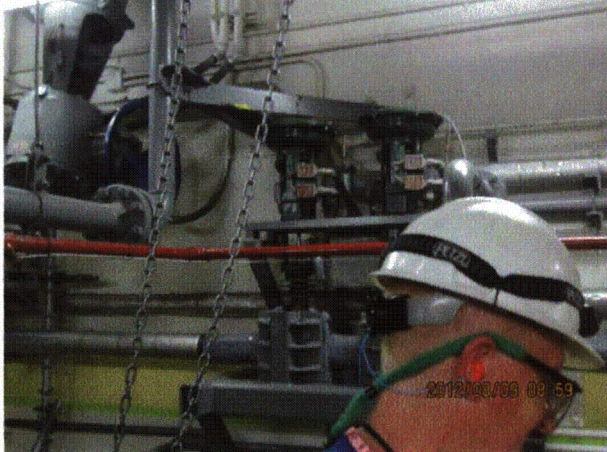
Status: Y N U

Seismic Walkdown Checklist (SWC)

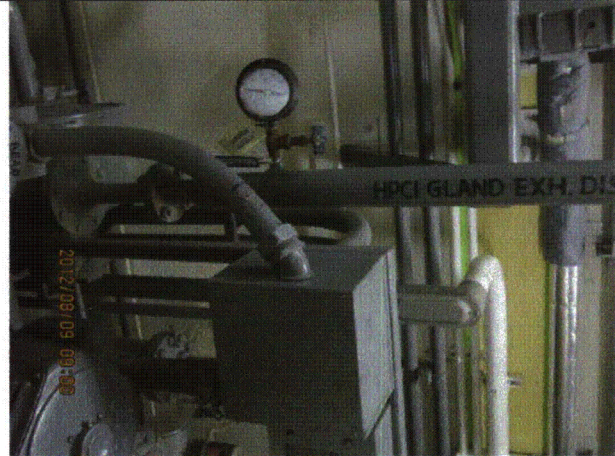
Equipment ID No.: 2-2308

Equipment Class: (5) Horizontal Pumps

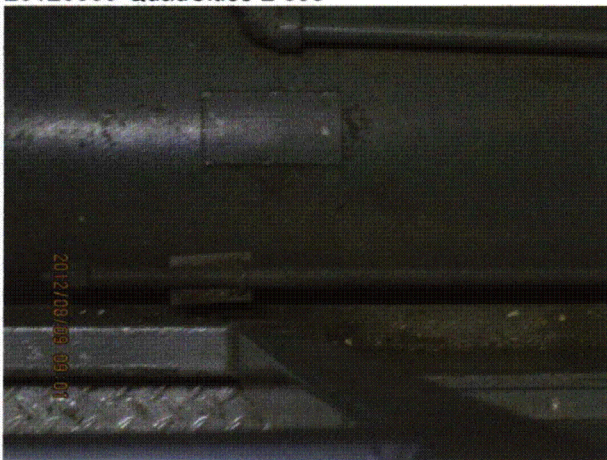
Equipment Description: AUXILIARY OIL PUMP (HPCI TURBINE)



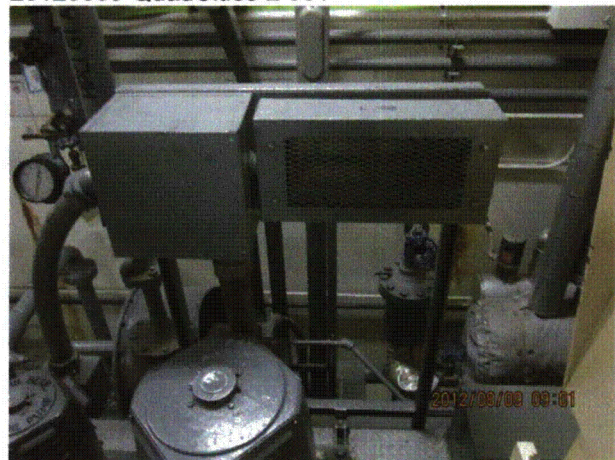
20120809-QuadCities-2 080



20120809-QuadCities-2 081



20120809-QuadCities-2 082



20120809-QuadCities-2 083

Status: Y N U

Seismic Walkdown Checklist (SWC)

Equipment ID No.: 2-2310

Equipment Class: (21) Tanks and Heat Exchangers

Equipment Description: COOLER U-2 HPCI OIL

Project: Quad Cities 2 SWEL

Location (Bldg, Elev, Room/Area): RB, 554.00 ft, ALL

Manufacturer/Model:

Instructions for Completing Checklist

This checklist may be used to document the results of the Seismic Walkdown of an item of equipment on the SWEL. The space below each of the following questions may be used to record the results of judgments and findings. Additional space is provided at the end of this checklist for documenting other comments.

Anchorage

- | | | |
|----|--|----------------|
| 1. | Is anchorage configuration verification required (i.e., is the item one of the 50% of SWEL items requiring such verification)? | No |
| 2. | Is the anchorage free of bent, broken, missing or loose hardware? | Yes |
| 3. | Is the anchorage free of corrosion that is more than mild surface oxidation? | Yes |
| 4. | Is the anchorage free of visible cracks in the concrete near the anchors?

<i>Oil cooler sits on 2 brackets that are welded to turbine skid. Oil cooler is attached to each bracket via a U-shaped hold-down with 4 bolts (2 at each end).</i> | Not Applicable |
| 5. | Is the anchorage configuration consistent with plant documentation? (Note: This question only applies if the item is one of the 50% for which an anchorage configuration verification is required.) | Not Applicable |
| 6. | Based on the above anchorage evaluations, is the anchorage free of potentially adverse seismic conditions? | Yes |

Status: Y N U

Seismic Walkdown Checklist (SWC)

Equipment ID No.: 2-2310

Equipment Class: (21) Tanks and Heat Exchangers

Equipment Description: COOLER U-2 HPCI OIL

Interaction Effects

7. Are soft targets free from impact by nearby equipment or structures? Yes
Targets protected by grating above.
8. Are overhead equipment, distribution systems, ceiling tiles and lighting, and masonry block walls not likely to collapse onto the equipment? Yes
Grating prevents impact from overhead items.
9. Do attached lines have adequate flexibility to avoid damage? Yes
10. Based on the above seismic interaction evaluations, is equipment free of potentially adverse seismic interaction effects? Yes

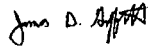
Other Adverse Conditions

11. Have you looked for and found no adverse seismic conditions that could adversely affect the safety functions of the equipment? Yes
Clearance from cooler piping to grating judged to be acceptable.

Comments

Seismic Walkdown Team: J. Griffith & M. Wodarczyk - 8/9/2012

Evaluated by:

 James Griffith

Date: 10/4/2012



Michael Wodarczyk

10/4/2012

Status: Y N U

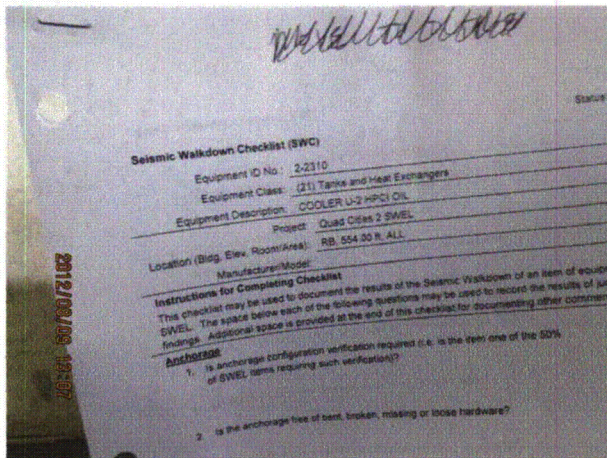
Seismic Walkdown Checklist (SWC)

Equipment ID No.: 2-2310

Equipment Class: (21) Tanks and Heat Exchangers

Equipment Description: COOLER U-2 HPCI OIL

Photos



20120809-QuadCities-2 280



20120809-QuadCities-2 281



20120809-QuadCities-2 282



20120809-QuadCities-2 283

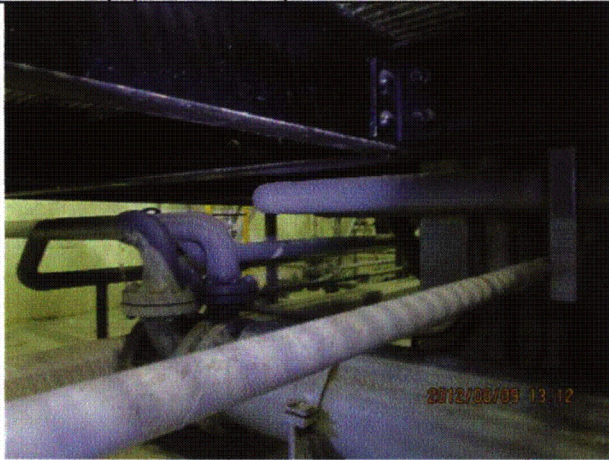
Status: Y N U

Seismic Walkdown Checklist (SWC)

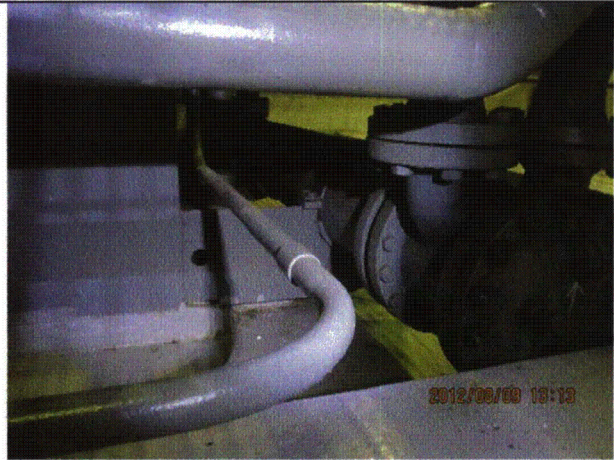
Equipment ID No.: 2-2310

Equipment Class: (21) Tanks and Heat Exchangers

Equipment Description: COOLER U-2 HPCI OIL



20120809-QuadCities-2 284



20120809-QuadCities-2 285



20120809-QuadCities-2 286



20120809-QuadCities-2 287

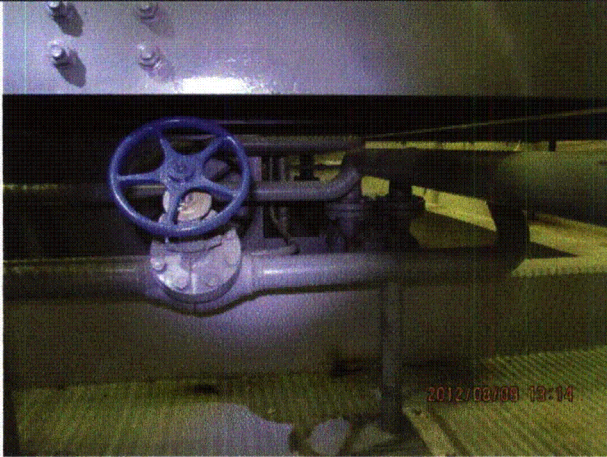
Status: Y N U

Seismic Walkdown Checklist (SWC)

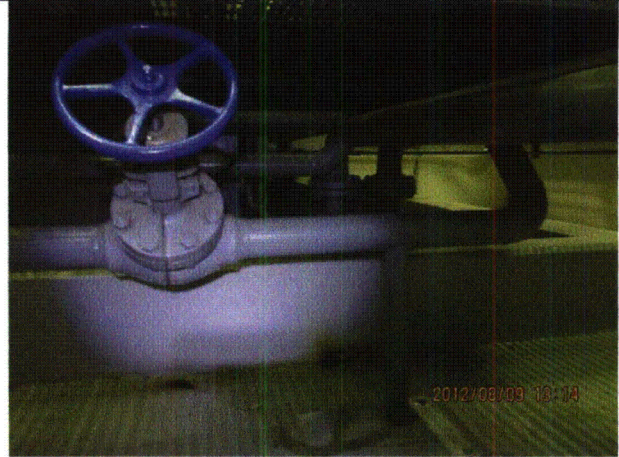
Equipment ID No.: 2-2310

Equipment Class: (21) Tanks and Heat Exchangers

Equipment Description: COOLER U-2 HPCI OIL



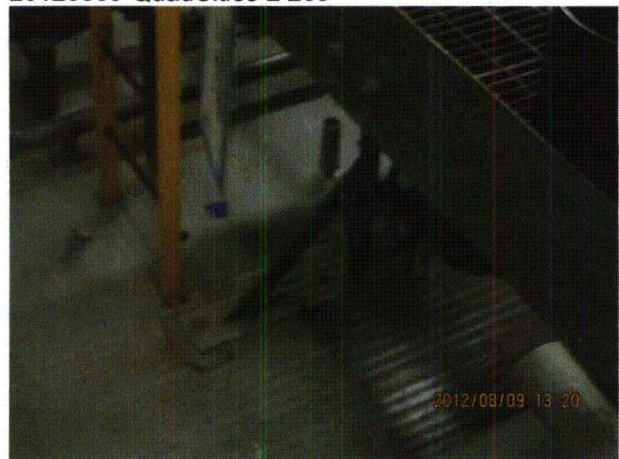
20120809-QuadCities-2 288



20120809-QuadCities-2 289



20120809-QuadCities-2 290



20120809-QuadCities-2 291

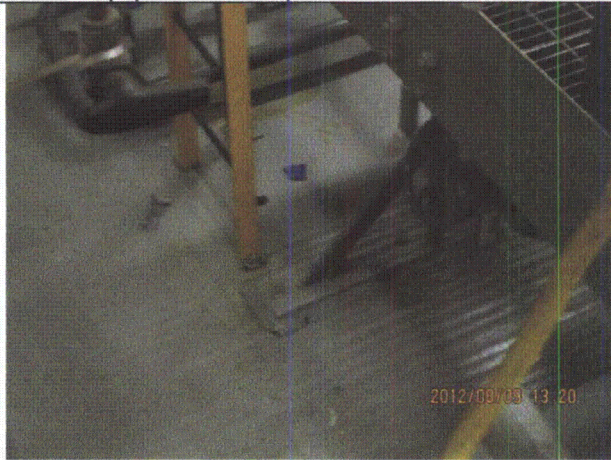
Status: Y N U

Seismic Walkdown Checklist (SWC)

Equipment ID No.: 2-2310

Equipment Class: (21) Tanks and Heat Exchangers

Equipment Description: COOLER U-2 HPCI OIL



20120809-QuadCities-2 292

Status: Y N U

Seismic Walkdown Checklist (SWC)

Equipment ID No.: 2-2399-15-PCV

Equipment Class: (7) Fluid-Operated Valves

Equipment Description: U-2 HPCI GL SEAL CONDENSER COND PMP DSCH PCV

Project: Quad Cities 2 SWEL

Location (Bldg, Elev, Room/Area): RB, 554.00 ft, ALL

Manufacturer/Model:

Instructions for Completing Checklist

This checklist may be used to document the results of the Seismic Walkdown of an item of equipment on the SWEL. The space below each of the following questions may be used to record the results of judgments and findings. Additional space is provided at the end of this checklist for documenting other comments.

Anchorage

1. Is anchorage configuration verification required (i.e., is the item one of the 50% of SWEL items requiring such verification)? No

2. Is the anchorage free of bent, broken, missing or loose hardware? Not Applicable

3. Is the anchorage free of corrosion that is more than mild surface oxidation? Not Applicable

4. Is the anchorage free of visible cracks in the concrete near the anchors? Not Applicable

5. Is the anchorage configuration consistent with plant documentation? (Note: This question only applies if the item is one of the 50% for which an anchorage configuration verification is required.) Not Applicable

6. Based on the above anchorage evaluations, is the anchorage free of potentially adverse seismic conditions? Yes

Status: Y N U

Seismic Walkdown Checklist (SWC)

Equipment ID No.: 2-2399-15-PCV

Equipment Class: (7) Fluid-Operated Valves

Equipment Description: U-2 HPCI GL SEAL CONDENSER COND PMP DSCH PCV

Interaction Effects

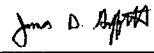

7. Are soft targets free from impact by nearby equipment or structures? Yes
8. Are overhead equipment, distribution systems, ceiling tiles and lighting, and masonry block walls not likely to collapse onto the equipment? Yes
Adjacent scaffold adequately restrained at top and is therefore judged to be acceptable.
9. Do attached lines have adequate flexibility to avoid damage? Yes
10. Based on the above seismic interaction evaluations, is equipment free of potentially adverse seismic interaction effects? Yes

Other Adverse Conditions

11. Have you looked for and found no adverse seismic conditions that could adversely affect the safety functions of the equipment? Yes
Conduit in contact with pipe from valve. Due to inherent flexibility of both items, contact is judged to be acceptable.

Comments

Seismic Walkdown Team: J. Griffith & M. Wodarcyk - 8/9/2012

Evaluated by:  James Griffith Date: 10/4/2012
 Michael Wodarcyk 10/4/2012

Status: Y N U

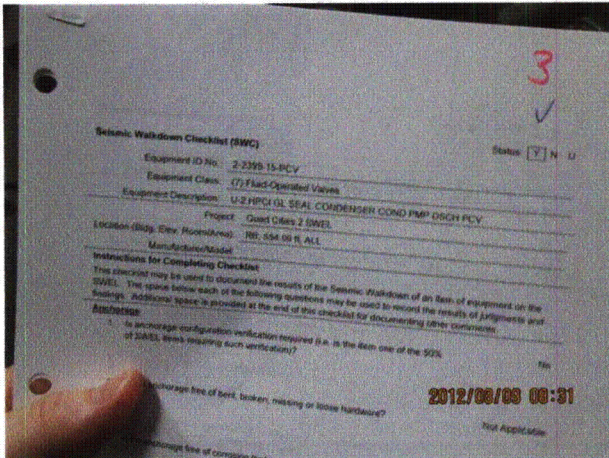
Seismic Walkdown Checklist (SWC)

Equipment ID No.: 2-2399-15-PCV

Equipment Class: (7) Fluid-Operated Valves

Equipment Description: U-2 HPCI GL SEAL CONDENSER COND PMP DSCH PCV

Photos



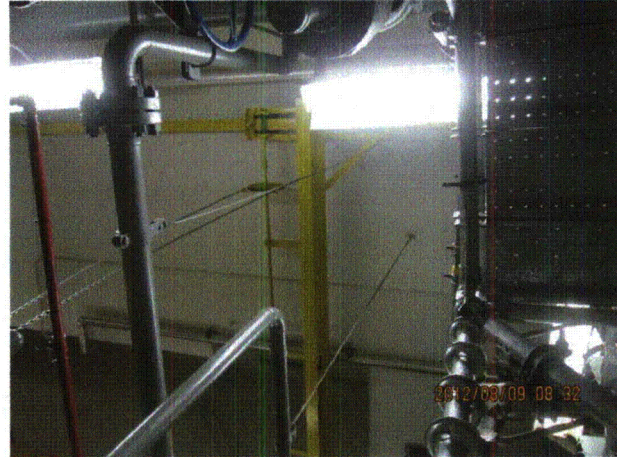
20120809-QuadCities-2 033



20120809-QuadCities-2 034



20120809-QuadCities-2 035



20120809-QuadCities-2 036

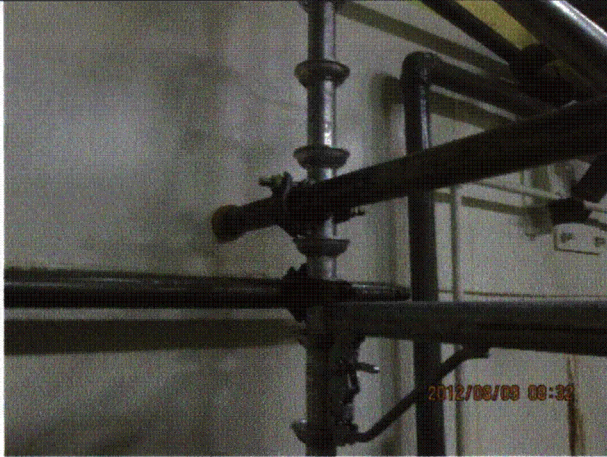
Status: Y N U

Seismic Walkdown Checklist (SWC)

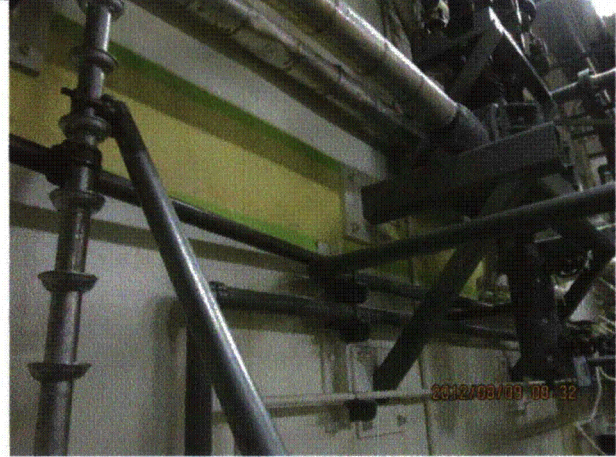
Equipment ID No.: 2-2399-15-PCV

Equipment Class: (7) Fluid-Operated Valves

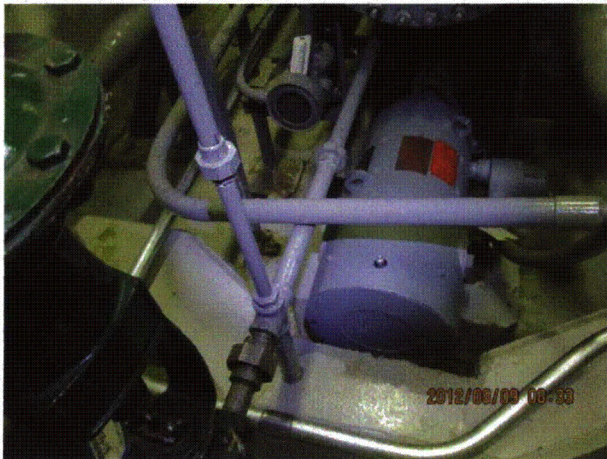
Equipment Description: U-2 HPCI GL SEAL CONDENSER COND PMP DSCH PCV



20120809-QuadCities-2 037



20120809-QuadCities-2 038



20120809-QuadCities-2 039



20120809-QuadCities-2 040

Status: Y N U

Seismic Walkdown Checklist (SWC)

Equipment ID No.: 2-2399-15-PCV

Equipment Class: (7) Fluid-Operated Valves

Equipment Description: U-2 HPCI GL SEAL CONDENSER COND PMP DSCH PCV



20120809-QuadCities-2 041

Status: Y N U

Seismic Walkdown Checklist (SWC)

Equipment ID No.: 2252-86

Equipment Class: (18) Instruments on Racks

Equipment Description: RACK

Project: Quad Cities 2 SWEL

Location (Bldg, Elev, Room/Area): TB, 639.00 ft, ALL

Manufacturer/Model:

Instructions for Completing Checklist

This checklist may be used to document the results of the Seismic Walkdown of an item of equipment on the SWEL. The space below each of the following questions may be used to record the results of judgments and findings. Additional space is provided at the end of this checklist for documenting other comments.

Anchorage

1. Is anchorage configuration verification required (i.e., is the item one of the 50% of SWEL items requiring such verification)? Yes

2. Is the anchorage free of bent, broken, missing or loose hardware? Yes

3. Is the anchorage free of corrosion that is more than mild surface oxidation? Yes

4. Is the anchorage free of visible cracks in the concrete near the anchors? Yes
Minor shrinkage cracks in floor judged to be acceptable.

5. Is the anchorage configuration consistent with plant documentation? (Note: This question only applies if the item is one of the 50% for which an anchorage configuration verification is required.) Yes

6. Based on the above anchorage evaluations, is the anchorage free of potentially adverse seismic conditions? Yes

Interaction Effects

7. Are soft targets free from impact by nearby equipment or structures? Yes

Status: Y N U

Seismic Walkdown Checklist (SWC)

Equipment ID No.: 2252-86

Equipment Class: (18) Instruments on Racks

Equipment Description: RACK

8. Are overhead equipment, distribution systems, ceiling tiles and lighting, and masonry block walls not likely to collapse onto the equipment? Yes
Overhead light fixtures judged to be acceptable. Masonry wall in vicinity restrained at top and judged to be acceptable.
9. Do attached lines have adequate flexibility to avoid damage? Yes
10. Based on the above seismic interaction evaluations, is equipment free of potentially adverse seismic interaction effects? Yes

Other Adverse Conditions

11. Have you looked for and found no adverse seismic conditions that could adversely affect the safety functions of the equipment? Yes

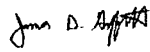
Comments

SEWS Anchorage Notes:

Relay box weighing less than 100 lbs. mounted on P5500 (Unistrut) frame anchored by eight 3/4" concrete expansion anchors.

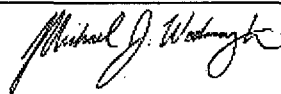
Seismic Walkdown Team: J. Griffith & M. Wodarczyk - 8/7/2012

Evaluated by:



James Griffith

Date: 10/16/2012



Michael Wodarczyk

10/16/2012

Status: Y N U

Seismic Walkdown Checklist (SWC)

Equipment ID No.: 2252-86

Equipment Class: (18) Instruments on Racks

Equipment Description: RACK

Photos



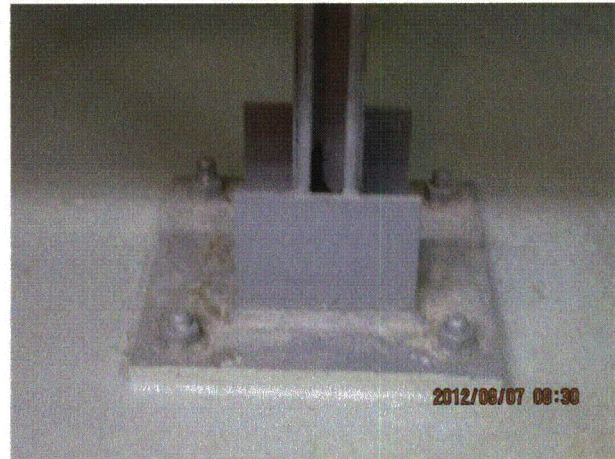
20120807-QuadCities-2 027



20120807-QuadCities-2 028



20120807-QuadCities-2 029



20120807-QuadCities-2 030

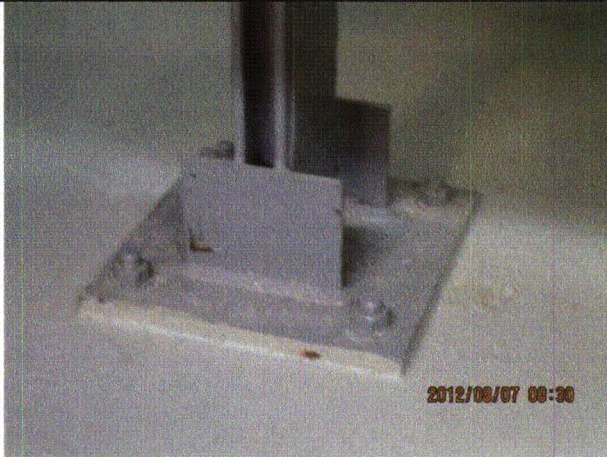
Status: Y N U

Seismic Walkdown Checklist (SWC)

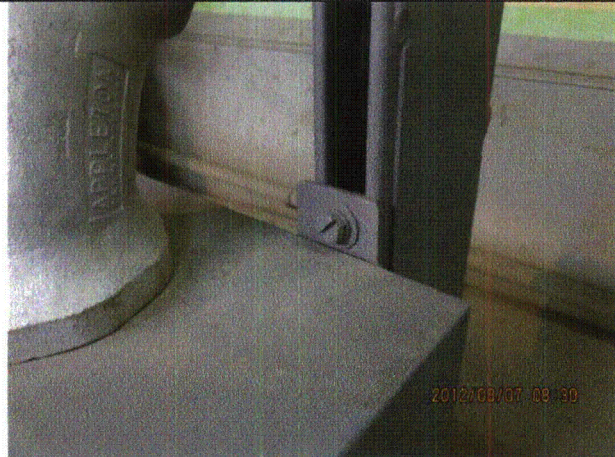
Equipment ID No.: 2252-86

Equipment Class: (18) Instruments on Racks

Equipment Description: RACK



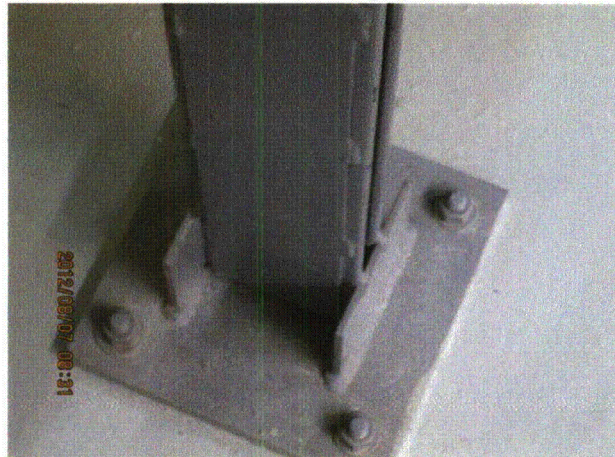
20120807-QuadCities-2 031



20120807-QuadCities-2 032



20120807-QuadCities-2 033



20120807-QuadCities-2 034

Status: Y N U

Seismic Walkdown Checklist (SWC)

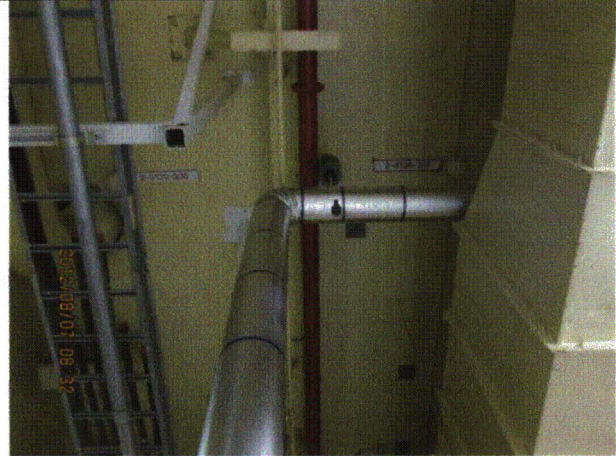
Equipment ID No.: 2252-86

Equipment Class: (18) Instruments on Racks

Equipment Description: RACK



20120807-QuadCities-2 035



20120807-QuadCities-2 037



20120807-QuadCities-2 038



20120807-QuadCities-2 039

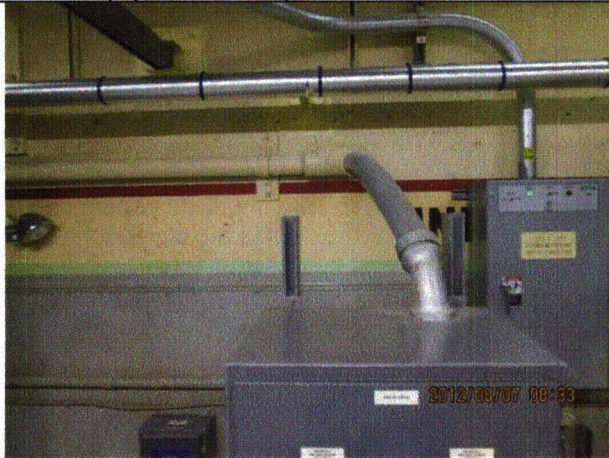
Status: Y N U

Seismic Walkdown Checklist (SWC)

Equipment ID No.: 2252-86

Equipment Class: (18) Instruments on Racks

Equipment Description: RACK



20120807-QuadCities-2 040



20120807-QuadCities-2 041

Status: Y N U

Seismic Walkdown Checklist (SWC)

Equipment ID No.: 2252-87

Equipment Class: (18) Instruments on Racks

Equipment Description: RACK

Project: Quad Cities 2 SWEL

Location (Bldg, Elev, Room/Area): TB, 639.00 ft, ALL

Manufacturer/Model:

Instructions for Completing Checklist

This checklist may be used to document the results of the Seismic Walkdown of an item of equipment on the SWEL. The space below each of the following questions may be used to record the results of judgments and findings. Additional space is provided at the end of this checklist for documenting other comments.

Anchorage

1. Is anchorage configuration verification required (i.e., is the item one of the 50% of SWEL items requiring such verification)? Yes

2. Is the anchorage free of bent, broken, missing or loose hardware? Yes

3. Is the anchorage free of corrosion that is more than mild surface oxidation? Yes

4. Is the anchorage free of visible cracks in the concrete near the anchors? Yes

5. Is the anchorage configuration consistent with plant documentation? (Note: This question only applies if the item is one of the 50% for which an anchorage configuration verification is required.) Yes

6. Based on the above anchorage evaluations, is the anchorage free of potentially adverse seismic conditions? Yes

Status: Y N U

Seismic Walkdown Checklist (SWC)

Equipment ID No.: 2252-87

Equipment Class: (18) Instruments on Racks

Equipment Description: RACK

Interaction Effects

7. Are soft targets free from impact by nearby equipment or structures? Yes
1-inch gap to wall judged to be acceptable.
8. Are overhead equipment, distribution systems, ceiling tiles and lighting, and masonry block walls not likely to collapse onto the equipment? Yes
Overhead light fixtures judged to be acceptable. Masonry wall in vicinity restrained at top and judged to be acceptable.
9. Do attached lines have adequate flexibility to avoid damage? Yes
10. Based on the above seismic interaction evaluations, is equipment free of potentially adverse seismic interaction effects? Yes

Other Adverse Conditions

11. Have you looked for and found no adverse seismic conditions that could adversely affect the safety functions of the equipment? Yes

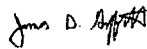
Comments

SEWS Anchorage Notes:

Relay box weighing less than 100 lbs. mounted on P5500 (Unistrut) frame anchored by eight 3/4" concrete expansion anchors.

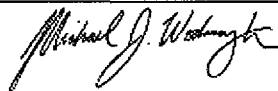
Seismic Walkdown Team: J. Griffith & M. Wodarczyk - 8/7/2012

Evaluated by:



James Griffith

Date: 10/4/2012



Michael Wodarczyk

10/4/2012

Status: Y N U

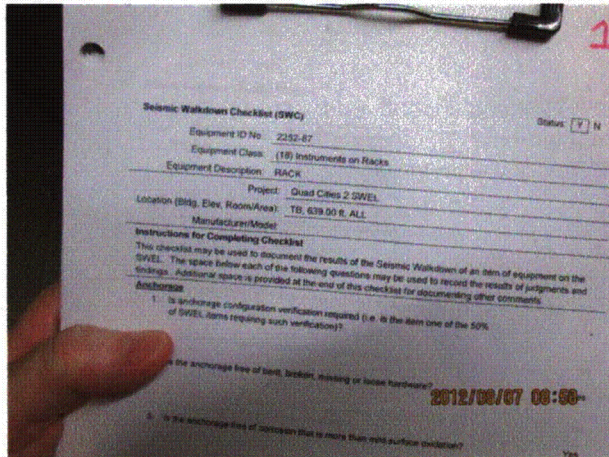
Seismic Walkdown Checklist (SWC)

Equipment ID No.: 2252-87

Equipment Class: (18) Instruments on Racks

Equipment Description: RACK

Photos



20120807-QuadCities-2 066



20120807-QuadCities-2 067



20120807-QuadCities-2 068



20120807-QuadCities-2 069

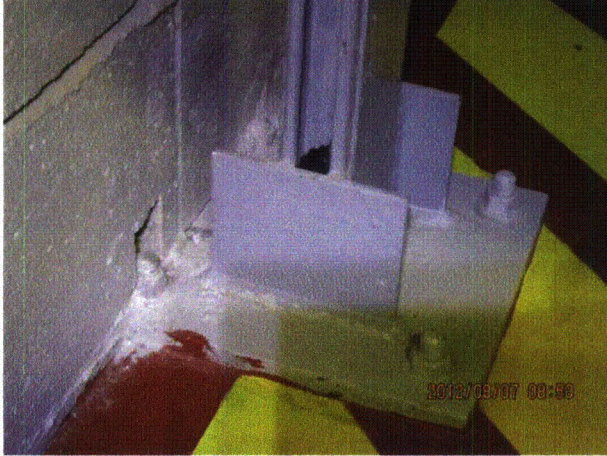
Status: Y N U

Seismic Walkdown Checklist (SWC)

Equipment ID No.: 2252-87

Equipment Class: (18) Instruments on Racks

Equipment Description: RACK



20120807-QuadCities-2 070



20120807-QuadCities-2 071



20120807-QuadCities-2 072



20120807-QuadCities-2 073

Status: Y N U

Seismic Walkdown Checklist (SWC)

Equipment ID No.: 2252-87

Equipment Class: (18) Instruments on Racks

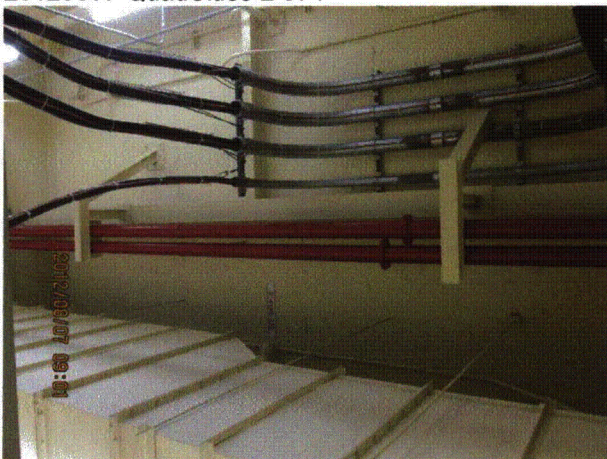
Equipment Description: RACK



20120807-QuadCities-2 074



20120807-QuadCities-2 075



20120807-QuadCities-2 076



20120807-QuadCities-2 077

Status: Y N U

Seismic Walkdown Checklist (SWC)

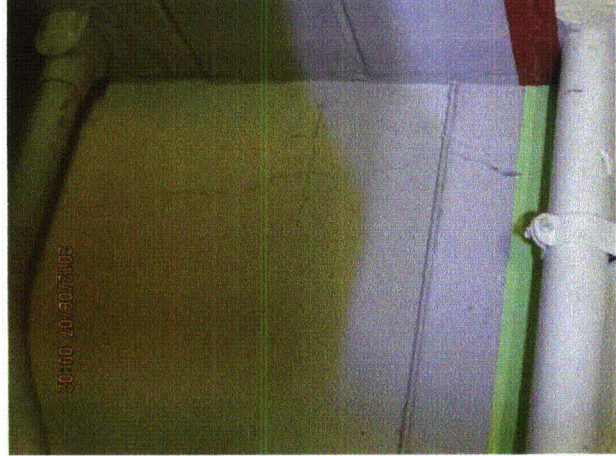
Equipment ID No.: 2252-87

Equipment Class: (18) Instruments on Racks

Equipment Description: RACK



20120807-QuadCities-2 078



20120807-QuadCities-2 079



20120807-QuadCities-2 080



20120807-QuadCities-2 081

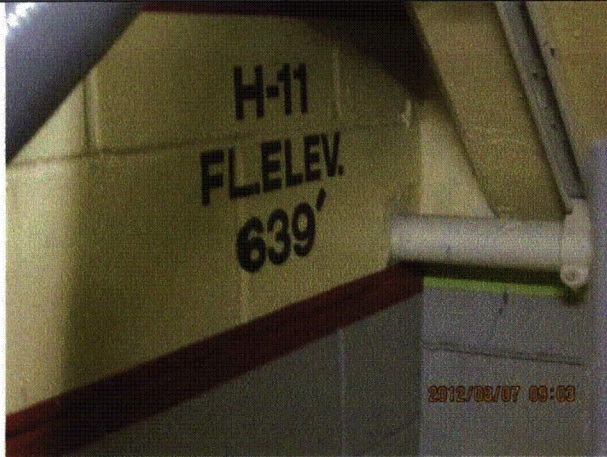
Status: Y N U

Seismic Walkdown Checklist (SWC)

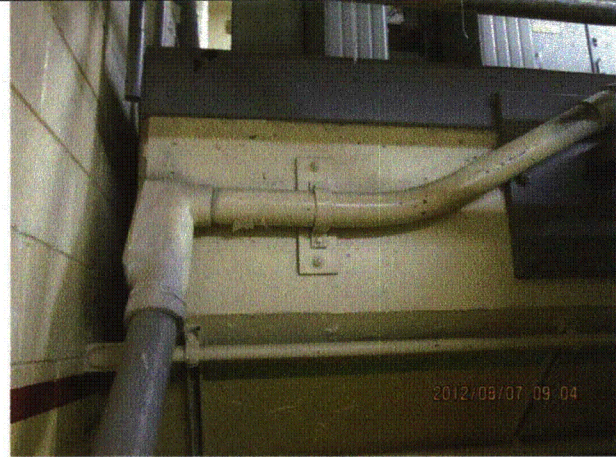
Equipment ID No.: 2252-87

Equipment Class: (18) Instruments on Racks

Equipment Description: RACK



20120807-QuadCities-2 082



20120807-QuadCities-2 083