

Status: Y N U

Seismic Walkdown Checklist (SWC)

Equipment ID No.: 2-0305-127-22-27

Equipment Class: (7) Fluid-Operated Valves

Equipment Description: CRD SCRAM Outlet Valve (22-27 F-7 (South))

Project: Quad Cities 2 SWEL

Location (Bldg, Elev, Room/Area): RB, 595.00 ft, ALL

Manufacturer/Model:

Instructions for Completing Checklist

This checklist may be used to document the results of the Seismic Walkdown of an item of equipment on the SWEL. The space below each of the following questions may be used to record the results of judgments and findings. Additional space is provided at the end of this checklist for documenting other comments.

Anchorage

1. Is anchorage configuration verification required (i.e., is the item one of the 50% of SWEL items requiring such verification)? No

2. Is the anchorage free of bent, broken, missing or loose hardware? Not Applicable

3. Is the anchorage free of corrosion that is more than mild surface oxidation? Not Applicable

4. Is the anchorage free of visible cracks in the concrete near the anchors? Not Applicable

5. Is the anchorage configuration consistent with plant documentation? (Note: This question only applies if the item is one of the 50% for which an anchorage configuration verification is required.) Not Applicable

6. Based on the above anchorage evaluations, is the anchorage free of potentially adverse seismic conditions? Yes
The scram outlet valve is an in-line component with the operator adequately restrained to the CRD/HCU support frame.

Status: Y N U

Seismic Walkdown Checklist (SWC)

Equipment ID No.: 2-0305-127-22-27

Equipment Class: (7) Fluid-Operated Valves

Equipment Description: CRD SCRAM Outlet Valve (22-27 F-7 (South))

Interaction Effects

7. Are soft targets free from impact by nearby equipment or structures? Yes

Tubes, conduits, and pipes in close proximity are flexible and judged to be acceptable.

8. Are overhead equipment, distribution systems, ceiling tiles and lighting, and masonry block walls not likely to collapse onto the equipment? Yes

One end of light supported by a beam clamp oriented incorrectly. Mitigated by deceleration and softening due to power cord. Judged to be acceptable.

9. Do attached lines have adequate flexibility to avoid damage? Yes

10. Based on the above seismic interaction evaluations, is equipment free of potentially adverse seismic interaction effects? Yes

Other Adverse Conditions

11. Have you looked for and found no adverse seismic conditions that could adversely affect the safety functions of the equipment? Yes

Tubes in close proximity to gallery bracket. Flexible tubes and gallery braced against lateral translation. Judged to be acceptable.

Comments

Seismic Walkdown Team: J. Griffith & M. Wodarczyk - 8/6/2012

Evaluated by:

 James Griffith

Date: 10/4/2012


Michael Wodarczyk

10/4/2012

Photos

Status: Y N U

Seismic Walkdown Checklist (SWC)

Equipment ID No.: 2-0305-127-30-11

Equipment Class: (7) Fluid-Operated Valves

Equipment Description: CRD SCRAM Outlet Valve (30-11 H-3 (South))

Project: Quad Cities 2 SWEL

Location (Bldg, Elev, Room/Area): RB, 595.00 ft, ALL

Manufacturer/Model:

Instructions for Completing Checklist

This checklist may be used to document the results of the Seismic Walkdown of an item of equipment on the SWEL. The space below each of the following questions may be used to record the results of judgments and findings. Additional space is provided at the end of this checklist for documenting other comments.

Anchorage

1. Is anchorage configuration verification required (i.e., is the item one of the 50% of SWEL items requiring such verification)? No

2. Is the anchorage free of bent, broken, missing or loose hardware? Not Applicable

3. Is the anchorage free of corrosion that is more than mild surface oxidation? Not Applicable

4. Is the anchorage free of visible cracks in the concrete near the anchors? Not Applicable

5. Is the anchorage configuration consistent with plant documentation? (Note: This question only applies if the item is one of the 50% for which an anchorage configuration verification is required.) Not Applicable

6. Based on the above anchorage evaluations, is the anchorage free of potentially adverse seismic conditions? Yes
The scram outlet valve is an in-line component with the operator adequately restrained to the CRD/HCU support frame.

Status: Y N U

Seismic Walkdown Checklist (SWC)

Equipment ID No.: 2-0305-127-30-11

Equipment Class: (7) Fluid-Operated Valves

Equipment Description: CRD SCRAM Outlet Valve (30-11 H-3 (South))

Interaction Effects

7. Are soft targets free from impact by nearby equipment or structures? Yes
8. Are overhead equipment, distribution systems, ceiling tiles and lighting, and masonry block walls not likely to collapse onto the equipment? Yes
One end of light supported by a beam clamp oriented incorrectly. Mitigated by deceleration and softening due to power cord. Judged to be acceptable.
9. Do attached lines have adequate flexibility to avoid damage? Yes
10. Based on the above seismic interaction evaluations, is equipment free of potentially adverse seismic interaction effects? Yes

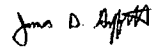
Other Adverse Conditions

11. Have you looked for and found no adverse seismic conditions that could adversely affect the safety functions of the equipment? Yes
Tubes in close proximity to gallery bracket. Flexible tubes and gallery braced against lateral translation. Judged to be acceptable.

Comments

Seismic Walkdown Team: J. Griffith & M. Wodarczyk - 8/6/2012

Evaluated by:

 James Griffith

Date: 10/4/2012



Michael Wodarczyk

10/4/2012

Photos

Status: Y N U

Seismic Walkdown Checklist (SWC)

Equipment ID No.: 2-0305-127-38-59

Equipment Class: (7) Fluid-Operated Valves

Equipment Description: CRD SCRAM Outlet Valve (38-59 K-15 (North))

Project: Quad Cities 2 SWEL

Location (Bldg, Elev, Room/Area): RB, 595.00 ft, ALL

Manufacturer/Model:

Instructions for Completing Checklist

This checklist may be used to document the results of the Seismic Walkdown of an item of equipment on the SWEL. The space below each of the following questions may be used to record the results of judgments and findings. Additional space is provided at the end of this checklist for documenting other comments.

Anchorage

1. Is anchorage configuration verification required (i.e., is the item one of the 50% of SWEL items requiring such verification)? No

2. Is the anchorage free of bent, broken, missing or loose hardware? Not Applicable

3. Is the anchorage free of corrosion that is more than mild surface oxidation? Not Applicable

4. Is the anchorage free of visible cracks in the concrete near the anchors? Not Applicable

5. Is the anchorage configuration consistent with plant documentation? (Note: This question only applies if the item is one of the 50% for which an anchorage configuration verification is required.) Not Applicable

6. Based on the above anchorage evaluations, is the anchorage free of potentially adverse seismic conditions? Yes
The scram outlet valve is an in-line component with the operator adequately restrained to the CRD/HCU support frame.

Status: Y N U

Seismic Walkdown Checklist (SWC)

Equipment ID No.: 2-0305-127-38-59

Equipment Class: (7) Fluid-Operated Valves

Equipment Description: CRD SCRAM Outlet Valve (38-59 K-15 (North))

Interaction Effects

7. Are soft targets free from impact by nearby equipment or structures? Yes

Tubes and pipes in close proximity are flexible and judged to be acceptable.

8. Are overhead equipment, distribution systems, ceiling tiles and lighting, and masonry block walls not likely to collapse onto the equipment? Yes

9. Do attached lines have adequate flexibility to avoid damage? Yes

10. Based on the above seismic interaction evaluations, is equipment free of potentially adverse seismic interaction effects? Yes

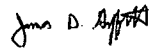
Other Adverse Conditions

11. Have you looked for and found no adverse seismic conditions that could adversely affect the safety functions of the equipment? Yes

Comments

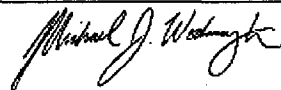
Seismic Walkdown Team: J. Griffith & M. Wodarcyk - 8/6/2012

Evaluated by:



James Griffith

Date: 10/4/2012



Michael Wodarcyk

10/4/2012

Photos

Status: Y N U

Seismic Walkdown Checklist (SWC)

Equipment ID No.: 2-0305-127-42-27

Equipment Class: (7) Fluid-Operated Valves

Equipment Description: CRD SCRAM Outlet Valve (42-27 L-7 (North))

Project: Quad Cities 2 SWEL

Location (Bldg, Elev, Room/Area): RB, 595.00 ft, ALL

Manufacturer/Model:

Instructions for Completing Checklist

This checklist may be used to document the results of the Seismic Walkdown of an item of equipment on the SWEL. The space below each of the following questions may be used to record the results of judgments and findings. Additional space is provided at the end of this checklist for documenting other comments.

Anchorage

1. Is anchorage configuration verification required (i.e., is the item one of the 50% of SWEL items requiring such verification)? No

2. Is the anchorage free of bent, broken, missing or loose hardware? Not Applicable

3. Is the anchorage free of corrosion that is more than mild surface oxidation? Not Applicable

4. Is the anchorage free of visible cracks in the concrete near the anchors? Not Applicable

5. Is the anchorage configuration consistent with plant documentation? (Note: This question only applies if the item is one of the 50% for which an anchorage configuration verification is required.) Not Applicable

6. Based on the above anchorage evaluations, is the anchorage free of potentially adverse seismic conditions? Yes
The scram outlet valve is an in-line component with the operator adequately restrained to the CRD/HCU support frame.

Interaction Effects

7. Are soft targets free from impact by nearby equipment or structures? Yes

Status: Y N U

Seismic Walkdown Checklist (SWC)

Equipment ID No.: 2-0305-127-42-27

Equipment Class: (7) Fluid-Operated Valves

Equipment Description: CRD SCRAM Outlet Valve (42-27 L-7 (North))

Tubes and pipes in close proximity are flexible and judged to be acceptable.

8. Are overhead equipment, distribution systems, ceiling tiles and lighting, and masonry block walls not likely to collapse onto the equipment? Yes
9. Do attached lines have adequate flexibility to avoid damage? Yes
10. Based on the above seismic interaction evaluations, is equipment free of potentially adverse seismic interaction effects? Yes

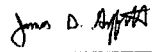
Other Adverse Conditions

11. Have you looked for and found no adverse seismic conditions that could adversely affect the safety functions of the equipment? Yes

Comments

Seismic Walkdown Team: J. Griffith & M. Wodarczyk - 8/6/2012

Evaluated by:

 James Griffith

Date: 10/4/2012



Michael Wodarczyk

10/4/2012

Photos

Status: Y N U

Seismic Walkdown Checklist (SWC)

Equipment ID No.: 2-0305-22-27

Equipment Class: (0) Other

Equipment Description: HCU - (22-27 F-7 (South))

Project: Quad Cities 2 SWEL

Location (Bldg, Elev, Room/Area): RB, 595.00 ft, ALL

Manufacturer/Model:

Instructions for Completing Checklist

This checklist may be used to document the results of the Seismic Walkdown of an item of equipment on the SWEL. The space below each of the following questions may be used to record the results of judgments and findings. Additional space is provided at the end of this checklist for documenting other comments.

Anchorage

1. Is anchorage configuration verification required (i.e., is the item one of the 50% of SWEL items requiring such verification)? Yes

2. Is the anchorage free of bent, broken, missing or loose hardware? Yes

3. Is the anchorage free of corrosion that is more than mild surface oxidation? Yes

4. Is the anchorage free of visible cracks in the concrete near the anchors? Yes

5. Is the anchorage configuration consistent with plant documentation? (Note: This question only applies if the item is one of the 50% for which an anchorage configuration verification is required.) Yes

6. Based on the above anchorage evaluations, is the anchorage free of potentially adverse seismic conditions? Yes
Valves and accumulator well-supported on HCU framework.

Status: Y N U

Seismic Walkdown Checklist (SWC)

Equipment ID No.: 2-0305-22-27

Equipment Class: (0) Other

Equipment Description: HCU - (22-27 F-7 (South))

Interaction Effects

7. Are soft targets free from impact by nearby equipment or structures? Yes

Tubes, conduits, and pipes in close proximity are flexible and judged to be acceptable.

8. Are overhead equipment, distribution systems, ceiling tiles and lighting, and masonry block walls not likely to collapse onto the equipment? Yes

One end of light supported by a beam clamp oriented incorrectly. Mitigated by deceleration and softening due to power cord. Judged to be acceptable.

9. Do attached lines have adequate flexibility to avoid damage? Yes

10. Based on the above seismic interaction evaluations, is equipment free of potentially adverse seismic interaction effects? Yes

Other Adverse Conditions

11. Have you looked for and found no adverse seismic conditions that could adversely affect the safety functions of the equipment? Yes

Tubes in close proximity to gallery bracket. Tubes are flexible, gallery is braced against lateral translation. Judged to be acceptable.

Comments

Seismic Walkdown Team: J. Griffith & M. Wodarcyk - 8/6/2012

Anchorage is shown on Drawings M-346, Rev. L, and M-357, Sheet 1, Rev. A.

Evaluated by:

 James Griffith

Date: 10/4/2012


Michael Wodarcyk

10/4/2012

Status: Y N U

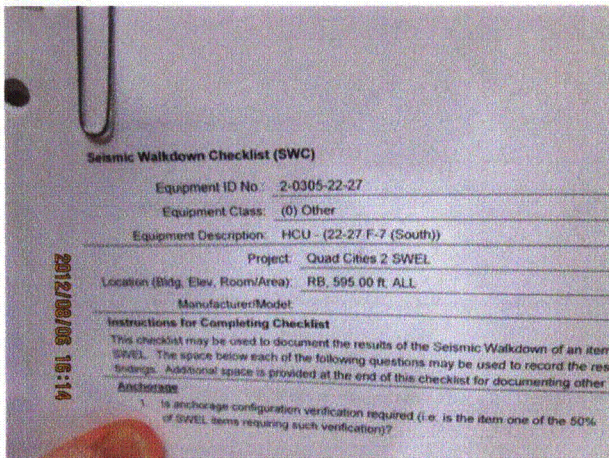
Seismic Walkdown Checklist (SWC)

Equipment ID No.: 2-0305-22-27

Equipment Class: (0) Other

Equipment Description: HCU - (22-27 F-7 (South))

Photos



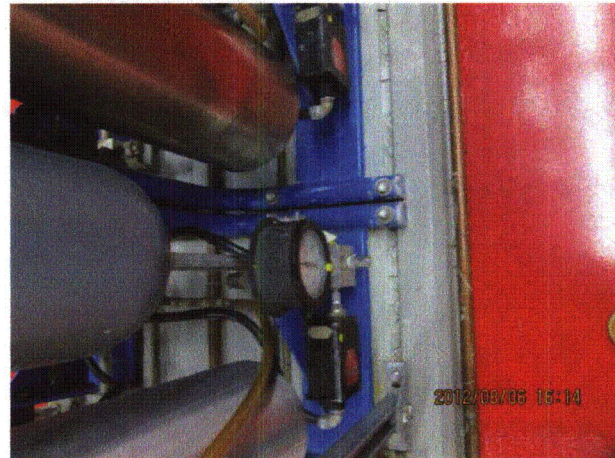
20120806-QuadCities-2 471



20120806-QuadCities-2 472



20120806-QuadCities-2 473



20120806-QuadCities-2 474

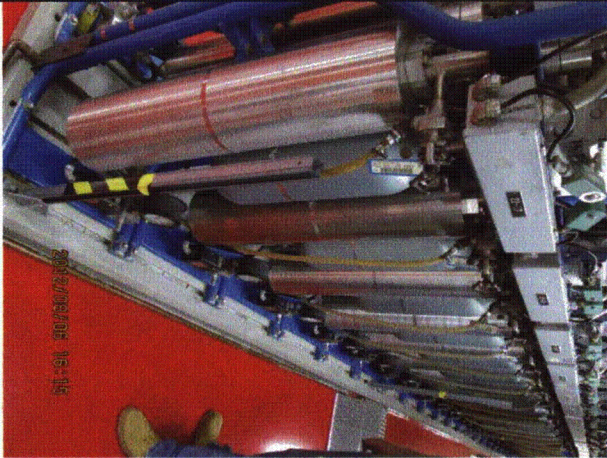
Status: Y N U

Seismic Walkdown Checklist (SWC)

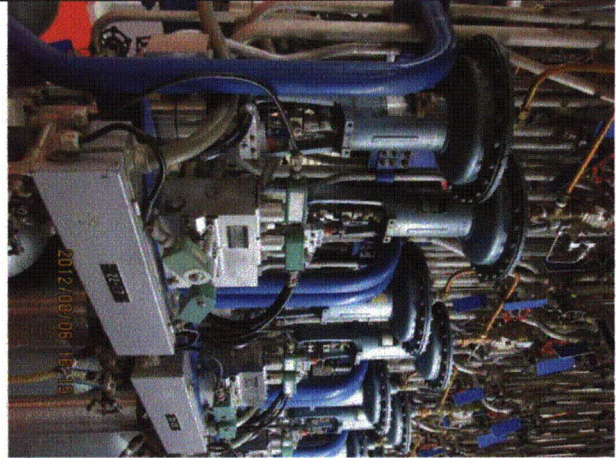
Equipment ID No.: 2-0305-22-27

Equipment Class: (0) Other

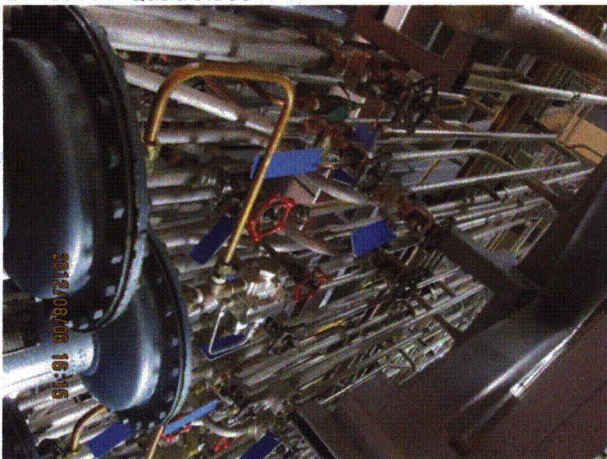
Equipment Description: HCU - (22-27 F-7 (South))



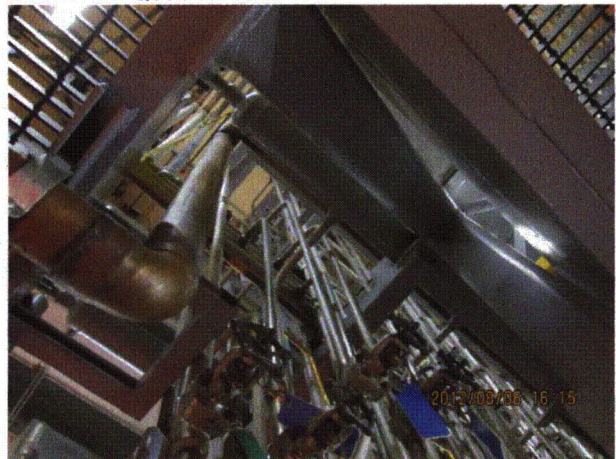
20120806-QuadCities-2 475



20120806-QuadCities-2 476



20120806-QuadCities-2 477



20120806-QuadCities-2 478

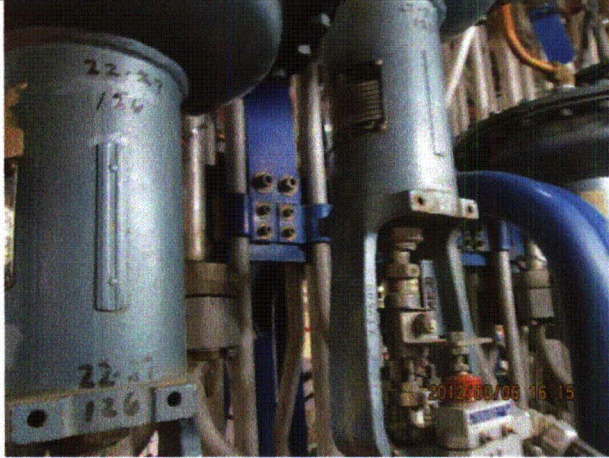
Status: Y N U

Seismic Walkdown Checklist (SWC)

Equipment ID No.: 2-0305-22-27

Equipment Class: (0) Other

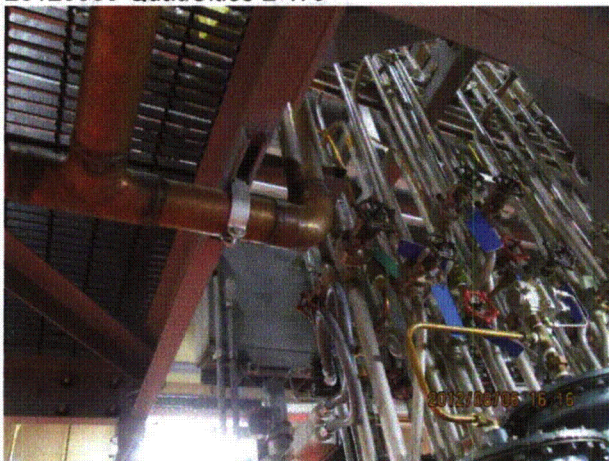
Equipment Description: HCU - (22-27 F-7 (South))



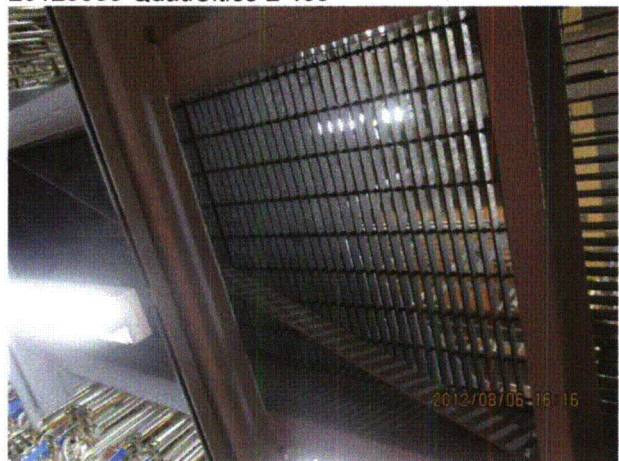
20120806-QuadCities-2 479



20120806-QuadCities-2 480



20120806-QuadCities-2 481



20120806-QuadCities-2 482

Status: Y N U

Seismic Walkdown Checklist (SWC)

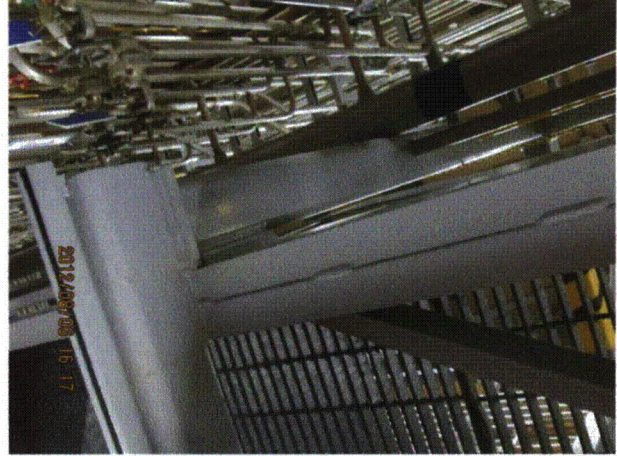
Equipment ID No.: 2-0305-22-27

Equipment Class: (0) Other

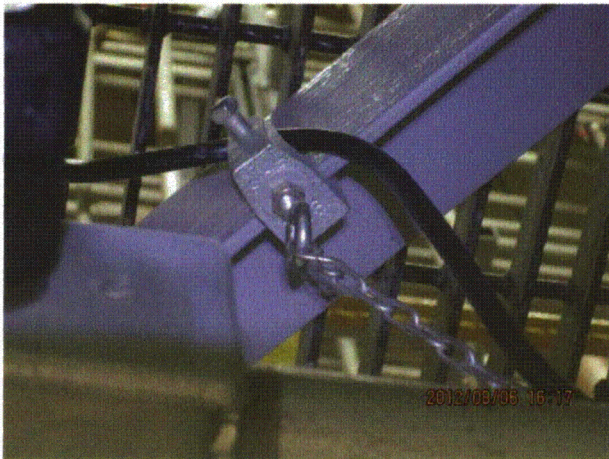
Equipment Description: HCU - (22-27 F-7 (South))



20120806-QuadCities-2 483



20120806-QuadCities-2 484



20120806-QuadCities-2 485



20120806-QuadCities-2 486

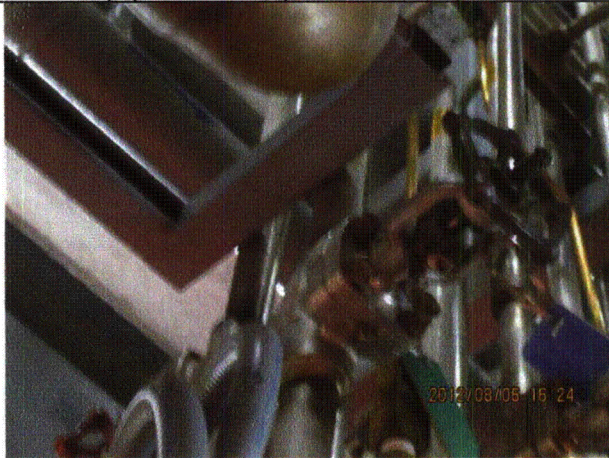
Status: Y N U

Seismic Walkdown Checklist (SWC)

Equipment ID No.: 2-0305-22-27

Equipment Class: (0) Other

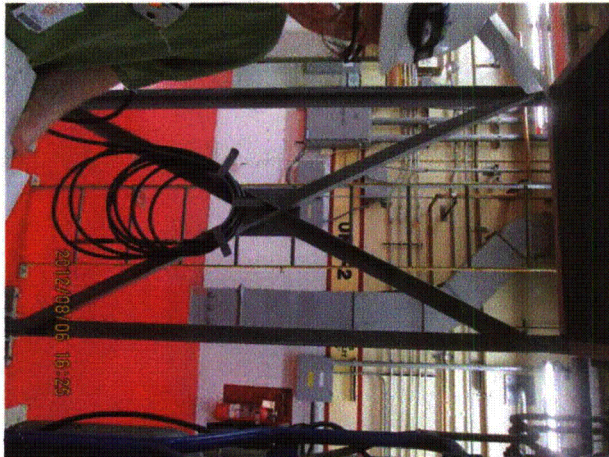
Equipment Description: HCU - (22-27 F-7 (South))



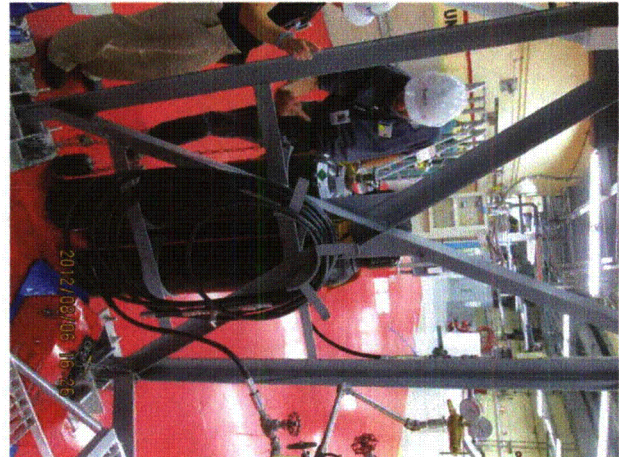
20120806-QuadCities-2 487



20120806-QuadCities-2 488



20120806-QuadCities-2 489



20120806-QuadCities-2 490

Status: Y N U

Seismic Walkdown Checklist (SWC)

Equipment ID No.: 2-0305-22-27

Equipment Class: (0) Other

Equipment Description: HCU - (22-27 F-7 (South))



20120806-QuadCities-2 491

Status: Y N U

Seismic Walkdown Checklist (SWC)

Equipment ID No.: 2-0305-30-11

Equipment Class: (0) Other

Equipment Description: HCU - (30-11 H-3 (South))

Project: Quad Cities 2 SWEL

Location (Bldg, Elev, Room/Area): RB, 595.00 ft, ALL

Manufacturer/Model:

Instructions for Completing Checklist

This checklist may be used to document the results of the Seismic Walkdown of an item of equipment on the SWEL. The space below each of the following questions may be used to record the results of judgments and findings. Additional space is provided at the end of this checklist for documenting other comments.

Anchorage

1. Is anchorage configuration verification required (i.e., is the item one of the 50% of SWEL items requiring such verification)? Yes

2. Is the anchorage free of bent, broken, missing or loose hardware? Yes

3. Is the anchorage free of corrosion that is more than mild surface oxidation? Yes

4. Is the anchorage free of visible cracks in the concrete near the anchors? Yes

5. Is the anchorage configuration consistent with plant documentation? (Note: This question only applies if the item is one of the 50% for which an anchorage configuration verification is required.) Yes

6. Based on the above anchorage evaluations, is the anchorage free of potentially adverse seismic conditions? Yes
Valves and accumulator well-supported on HCU framework.

Status: Y N U

Seismic Walkdown Checklist (SWC)

Equipment ID No.: 2-0305-30-11

Equipment Class: (0) Other

Equipment Description: HCU - (30-11 H-3 (South))

Interaction Effects

7. Are soft targets free from impact by nearby equipment or structures? Yes
8. Are overhead equipment, distribution systems, ceiling tiles and lighting, and masonry block walls not likely to collapse onto the equipment? Yes
One end of light supported by a beam clamp oriented incorrectly. Mitigated by deceleration and softening due to power cord. Judged to be acceptable.
9. Do attached lines have adequate flexibility to avoid damage? Yes
10. Based on the above seismic interaction evaluations, is equipment free of potentially adverse seismic interaction effects? Yes

Other Adverse Conditions

11. Have you looked for and found no adverse seismic conditions that could adversely affect the safety functions of the equipment? Yes
Tubes in close proximity to gallery bracket. Flexible tubes and gallery braced against lateral translation. Judged to be acceptable.

Comments

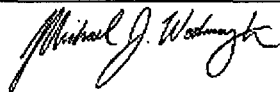
Seismic Walkdown Team: J. Griffith & M. Wodarczyk - 8/6/2012

Anchorage is shown on Drawings M-346, Rev. L, and M-357, Sheet 1, Rev. A.

Evaluated by:

 James Griffith

Date: 10/4/2012



Michael Wodarczyk

10/4/2012

Status: Y N U

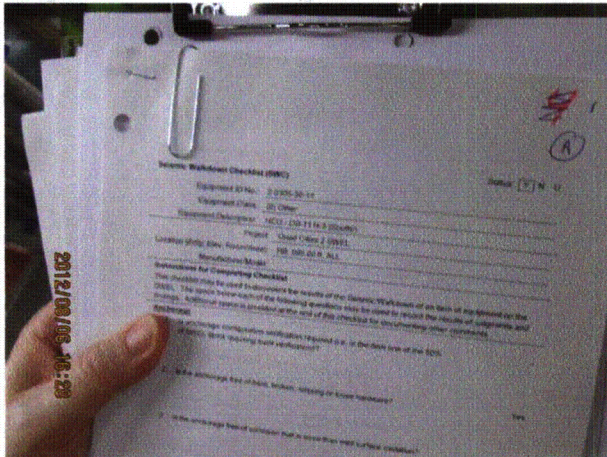
Seismic Walkdown Checklist (SWC)

Equipment ID No.: 2-0305-30-11

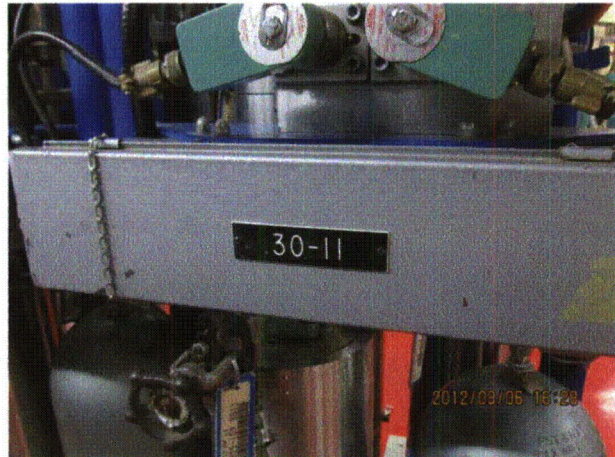
Equipment Class: (0) Other

Equipment Description: HCU - (30-11 H-3 (South))

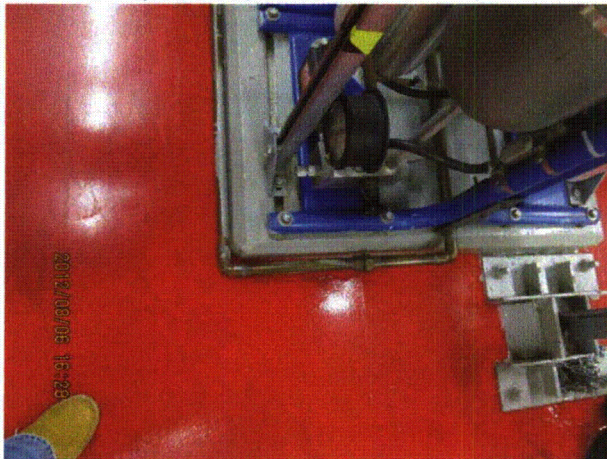
Photos



20120806-QuadCities-2 492



20120806-QuadCities-2 493



20120806-QuadCities-2 494



20120806-QuadCities-2 495

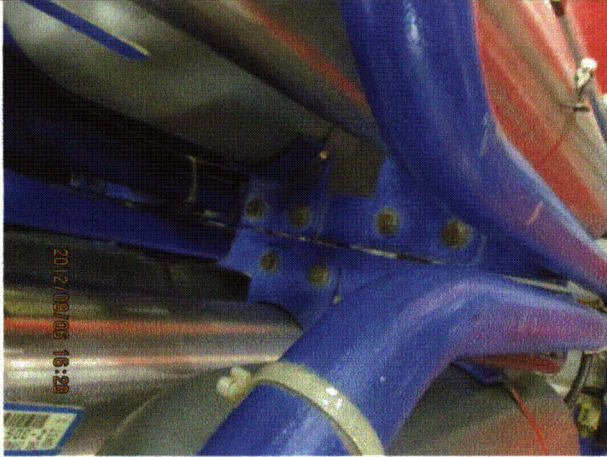
Status: Y N U

Seismic Walkdown Checklist (SWC)

Equipment ID No.: 2-0305-30-11

Equipment Class: (0) Other

Equipment Description: HCU - (30-11 H-3 (South))



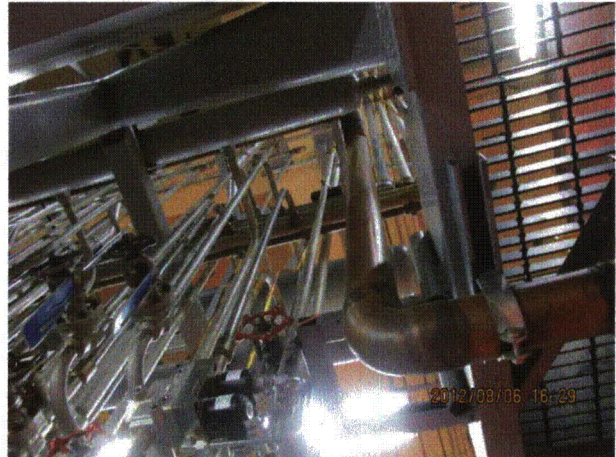
20120806-QuadCities-2 496



20120806-QuadCities-2 497



20120806-QuadCities-2 498



20120806-QuadCities-2 499

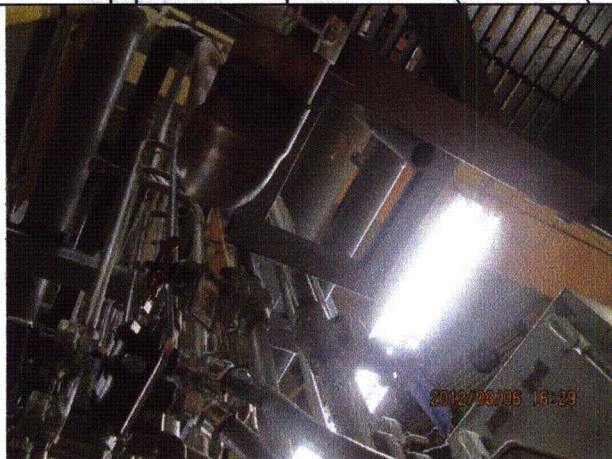
Status: Y N U

Seismic Walkdown Checklist (SWC)

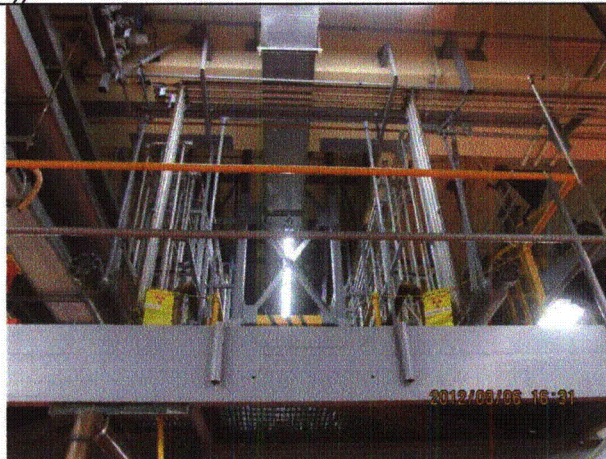
Equipment ID No.: 2-0305-30-11

Equipment Class: (0) Other

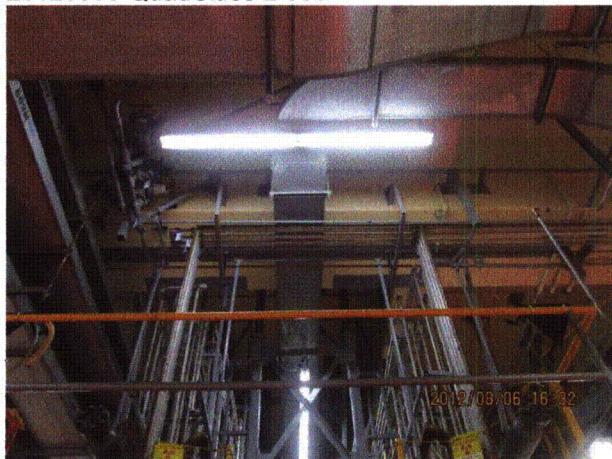
Equipment Description: HCU - (30-11 H-3 (South))



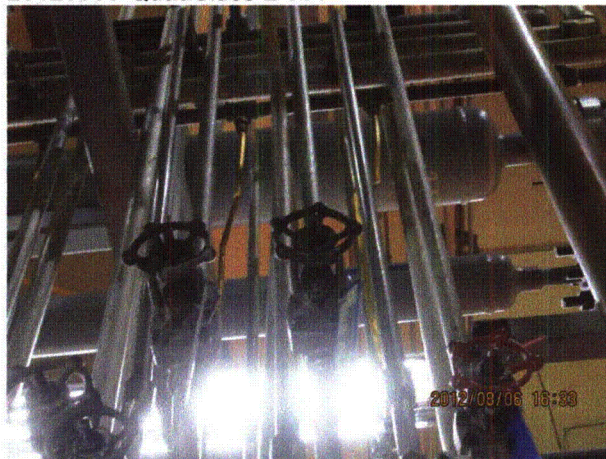
20120806-QuadCities-2 500



20120806-QuadCities-2 501



20120806-QuadCities-2 502



20120806-QuadCities-2 503

Status: Y N U

Seismic Walkdown Checklist (SWC)

Equipment ID No.: 2-0305-38-59

Equipment Class: (0) Other

Equipment Description: HCU - (38-59 K-15 (North))

Project: Quad Cities 2 SWEL

Location (Bldg, Elev, Room/Area): RB, 595.00 ft, ALL

Manufacturer/Model:

Instructions for Completing Checklist

This checklist may be used to document the results of the Seismic Walkdown of an item of equipment on the SWEL. The space below each of the following questions may be used to record the results of judgments and findings. Additional space is provided at the end of this checklist for documenting other comments.

Anchorage

1. Is anchorage configuration verification required (i.e., is the item one of the 50% of SWEL items requiring such verification)? Yes

2. Is the anchorage free of bent, broken, missing or loose hardware? Yes

3. Is the anchorage free of corrosion that is more than mild surface oxidation? Yes

4. Is the anchorage free of visible cracks in the concrete near the anchors? Yes

5. Is the anchorage configuration consistent with plant documentation? (Note: This question only applies if the item is one of the 50% for which an anchorage configuration verification is required.) Yes

6. Based on the above anchorage evaluations, is the anchorage free of potentially adverse seismic conditions? Yes
Valves and accumulator well-supported on HCU framework.

Status: Y N U

Seismic Walkdown Checklist (SWC)

Equipment ID No.: 2-0305-38-59

Equipment Class: (0) Other

Equipment Description: HCU - (38-59 K-15 (North))

Interaction Effects

7. Are soft targets free from impact by nearby equipment or structures? Yes
Tubes and pipes in close proximity are flexible and judged to be acceptable.
8. Are overhead equipment, distribution systems, ceiling tiles and lighting, and masonry block walls not likely to collapse onto the equipment? Yes
9. Do attached lines have adequate flexibility to avoid damage? Yes
10. Based on the above seismic interaction evaluations, is equipment free of potentially adverse seismic interaction effects? Yes

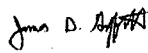
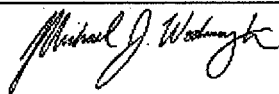
Other Adverse Conditions

11. Have you looked for and found no adverse seismic conditions that could adversely affect the safety functions of the equipment? Yes

Comments

Seismic Walkdown Team: J. Griffith & M. Wodarcyk - 8/6/2012

Anchorage is shown on Drawings M-346, Rev. L, and M-357, Sheet 1, Rev. A.

Evaluated by:  James Griffith Date: 10/4/2012
 Michael Wodarcyk 10/4/2012

Status: Y N U

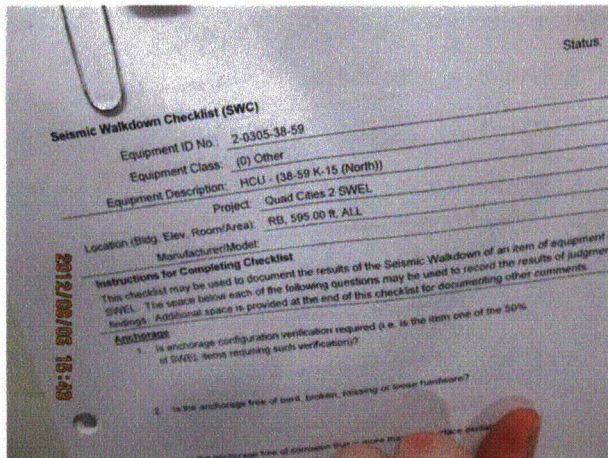
Seismic Walkdown Checklist (SWC)

Equipment ID No.: 2-0305-38-59

Equipment Class: (0) Other

Equipment Description: HCU - (38-59 K-15 (North))

Photos



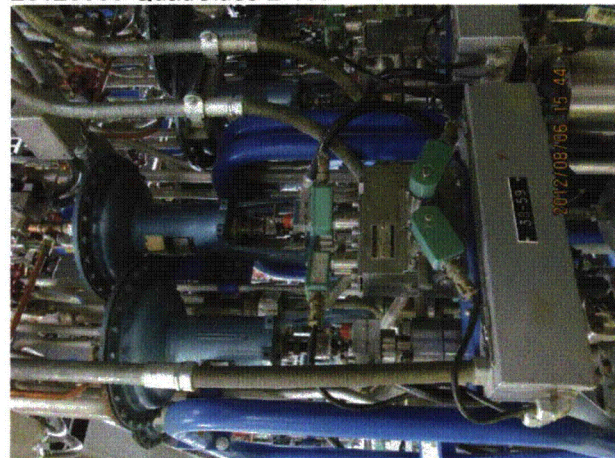
20120806-QuadCities-2 410



20120806-QuadCities-2 411



20120806-QuadCities-2 412



20120806-QuadCities-2 413

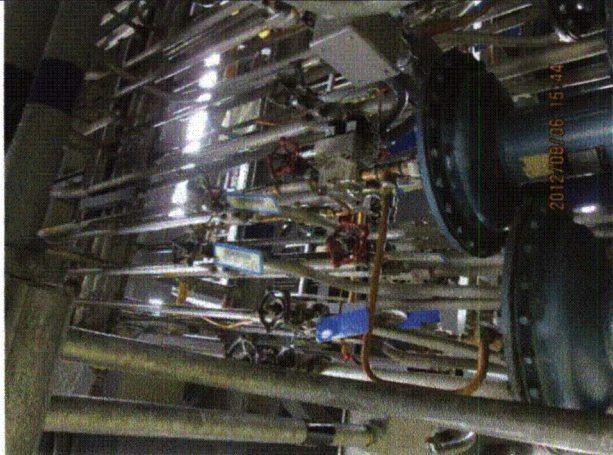
Status: Y N U

Seismic Walkdown Checklist (SWC)

Equipment ID No.: 2-0305-38-59

Equipment Class: (0) Other

Equipment Description: HCU - (38-59 K-15 (North))



20120806-QuadCities-2 414



20120806-QuadCities-2 415



20120806-QuadCities-2 416



20120806-QuadCities-2 417

Status: Y N U

Seismic Walkdown Checklist (SWC)

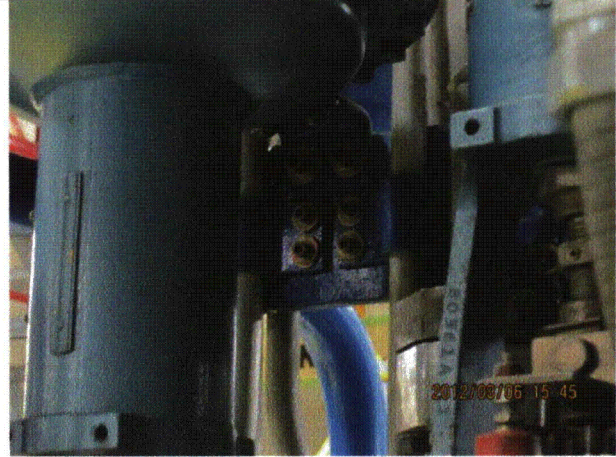
Equipment ID No.: 2-0305-38-59

Equipment Class: (0) Other

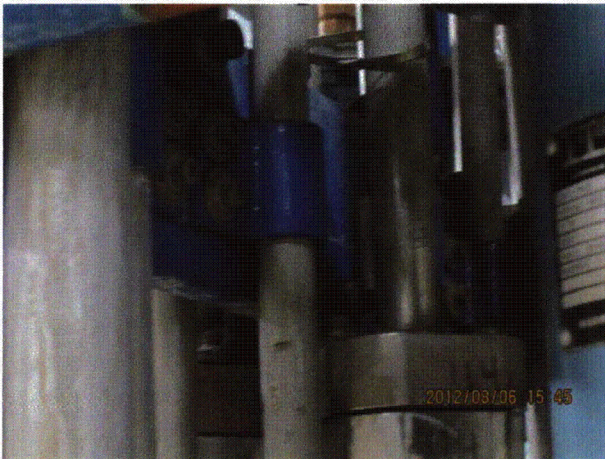
Equipment Description: HCU - (38-59 K-15 (North))



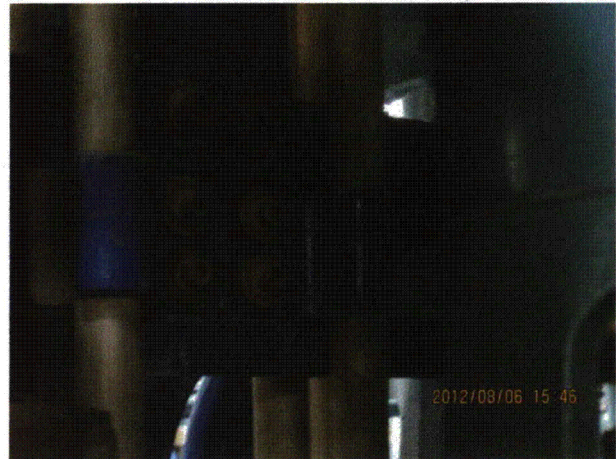
20120806-QuadCities-2 418



20120806-QuadCities-2 419



20120806-QuadCities-2 420



20120806-QuadCities-2 421

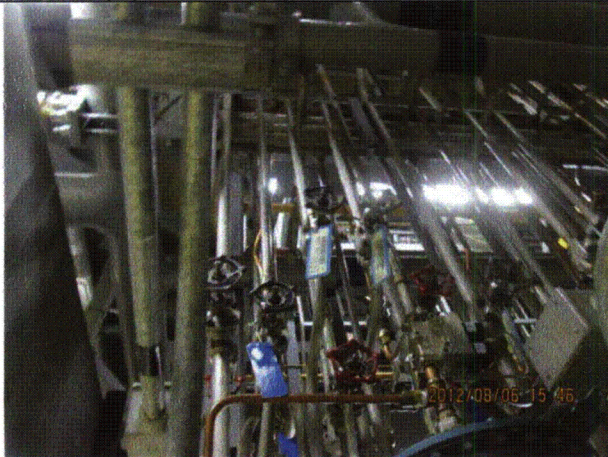
Status: Y N U

Seismic Walkdown Checklist (SWC)

Equipment ID No.: 2-0305-38-59

Equipment Class: (0) Other

Equipment Description: HCU - (38-59 K-15 (North))



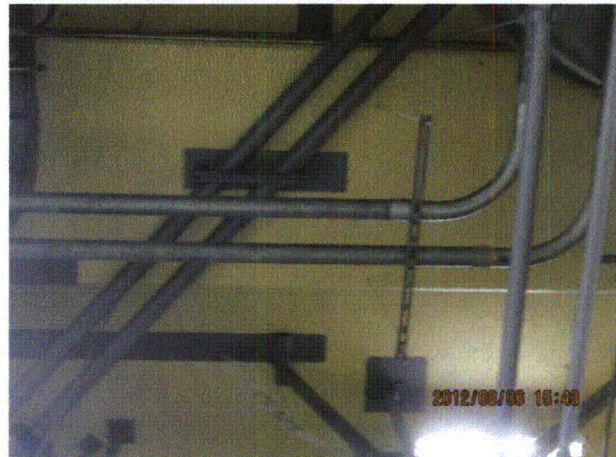
20120806-QuadCities-2 422



20120806-QuadCities-2 423



20120806-QuadCities-2 424



20120806-QuadCities-2 425

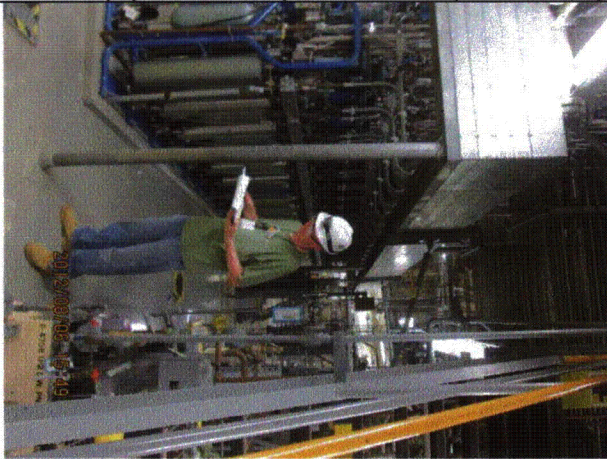
Status: Y N U

Seismic Walkdown Checklist (SWC)

Equipment ID No.: 2-0305-38-59

Equipment Class: (0) Other

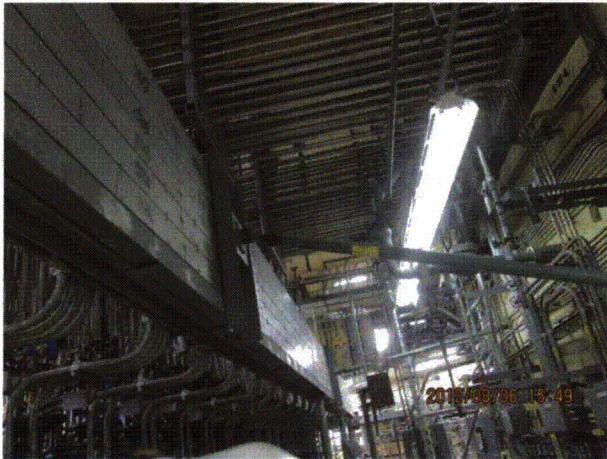
Equipment Description: HCU - (38-59 K-15 (North))



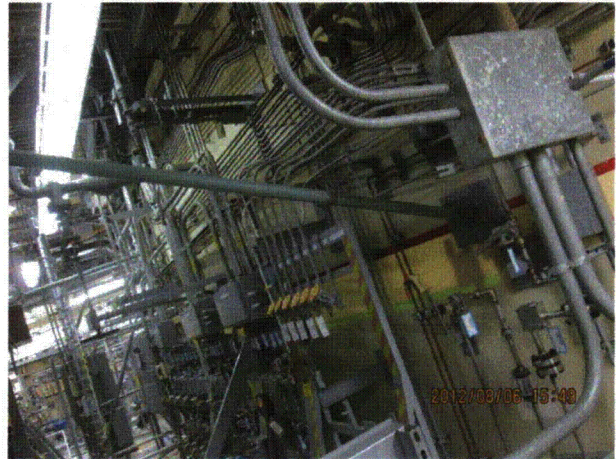
20120806-QuadCities-2 426



20120806-QuadCities-2 427



20120806-QuadCities-2 428



20120806-QuadCities-2 429

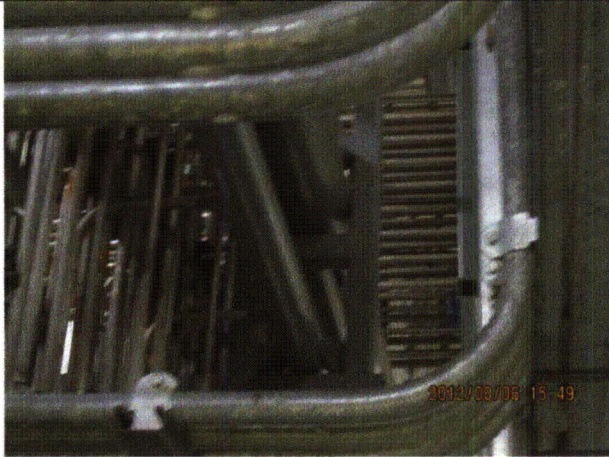
Status: Y N U

Seismic Walkdown Checklist (SWC)

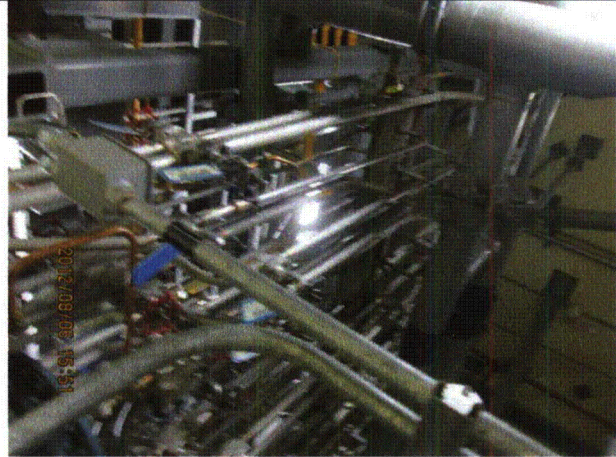
Equipment ID No.: 2-0305-38-59

Equipment Class: (0) Other

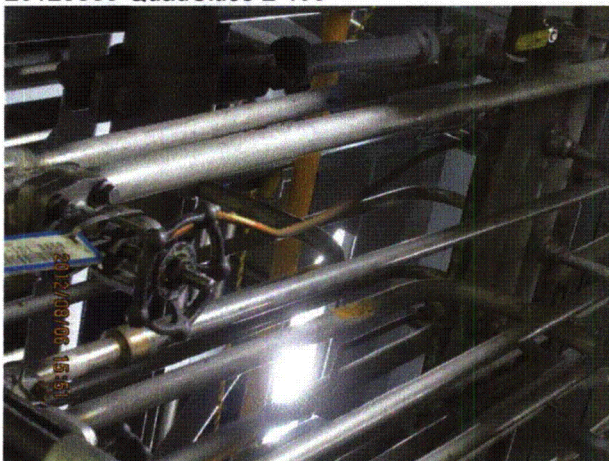
Equipment Description: HCU - (38-59 K-15 (North))



20120806-QuadCities-2 430



20120806-QuadCities-2 431



20120806-QuadCities-2 432

Status: Y N U

Seismic Walkdown Checklist (SWC)

Equipment ID No.: 2-0305-42-27

Equipment Class: (0) Other

Equipment Description: HCU - (42-27 L-7 (North))

Project: Quad Cities 2 SWEL

Location (Bldg, Elev, Room/Area): RB, 595.00 ft, ALL

Manufacturer/Model:

Instructions for Completing Checklist

This checklist may be used to document the results of the Seismic Walkdown of an item of equipment on the SWEL. The space below each of the following questions may be used to record the results of judgments and findings. Additional space is provided at the end of this checklist for documenting other comments.

Anchorage

1. Is anchorage configuration verification required (i.e., is the item one of the 50% of SWEL items requiring such verification)? Yes

2. Is the anchorage free of bent, broken, missing or loose hardware? Yes

3. Is the anchorage free of corrosion that is more than mild surface oxidation? Yes

4. Is the anchorage free of visible cracks in the concrete near the anchors? Yes

5. Is the anchorage configuration consistent with plant documentation? (Note: This question only applies if the item is one of the 50% for which an anchorage configuration verification is required.) Yes

6. Based on the above anchorage evaluations, is the anchorage free of potentially adverse seismic conditions? Yes
Valves and accumulator well-supported on HCU framework.

Status: Y N U

Seismic Walkdown Checklist (SWC)

Equipment ID No.: 2-0305-42-27

Equipment Class: (0) Other

Equipment Description: HCU - (42-27 L-7 (North))

Interaction Effects

7. Are soft targets free from impact by nearby equipment or structures? Yes
Tubes and pipes in close proximity are flexible and judged to be acceptable.
8. Are overhead equipment, distribution systems, ceiling tiles and lighting, and masonry block walls not likely to collapse onto the equipment? Yes
9. Do attached lines have adequate flexibility to avoid damage? Yes
10. Based on the above seismic interaction evaluations, is equipment free of potentially adverse seismic interaction effects? Yes

Other Adverse Conditions

11. Have you looked for and found no adverse seismic conditions that could adversely affect the safety functions of the equipment? Yes

Comments

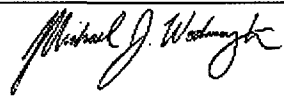
Seismic Walkdown Team: J. Griffith & M. Wodarczyk - 8/6/2012

Anchorage is shown on Drawings M-346, Rev. L, and M-357, Sheet 1, Rev. A.

Evaluated by:

 James Griffith

Date: 10/4/2012


Michael Wodarczyk

10/4/2012

Status: Y N U

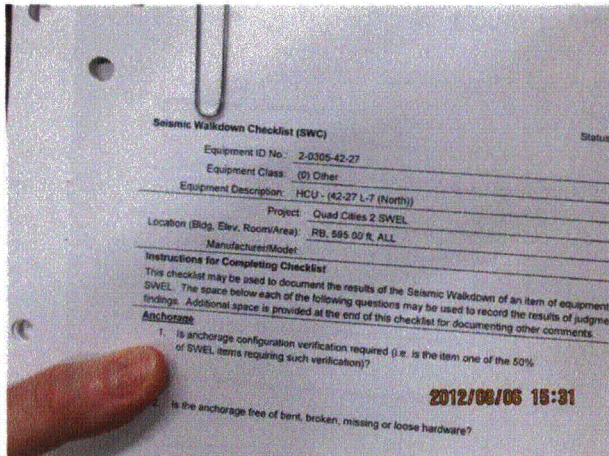
Seismic Walkdown Checklist (SWC)

Equipment ID No.: 2-0305-42-27

Equipment Class: (0) Other

Equipment Description: HCU - (42-27 L-7 (North))

Photos



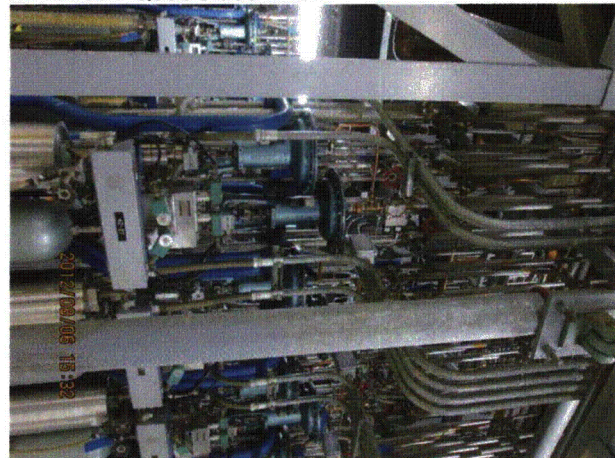
20120806-QuadCities-2 386



20120806-QuadCities-2 387



20120806-QuadCities-2 388



20120806-QuadCities-2 389

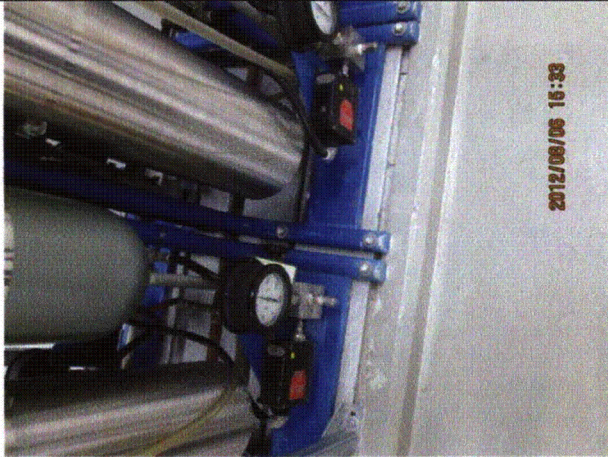
Status: Y N U

Seismic Walkdown Checklist (SWC)

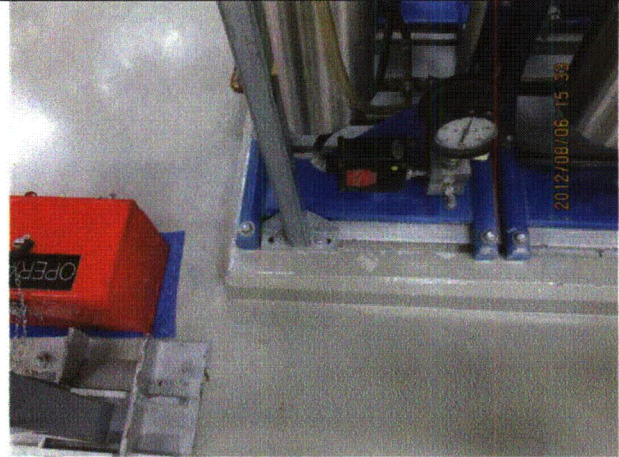
Equipment ID No.: 2-0305-42-27

Equipment Class: (0) Other

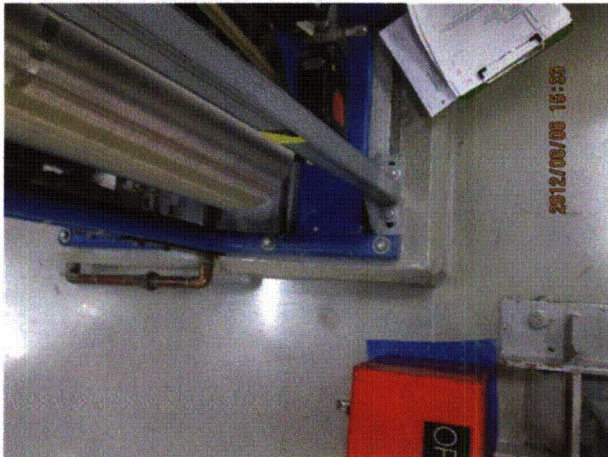
Equipment Description: HCU - (42-27 L-7 (North))



20120806-QuadCities-2 390



20120806-QuadCities-2 391



20120806-QuadCities-2 392



20120806-QuadCities-2 393

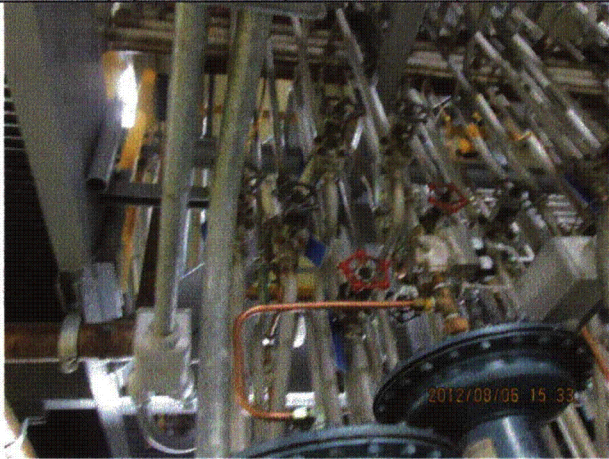
Status: Y N U

Seismic Walkdown Checklist (SWC)

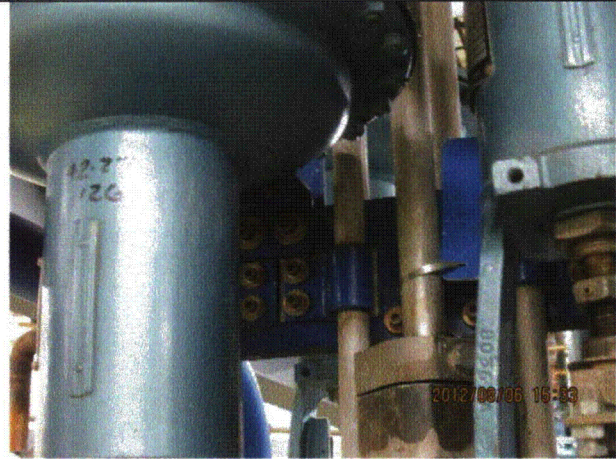
Equipment ID No.: 2-0305-42-27

Equipment Class: (0) Other

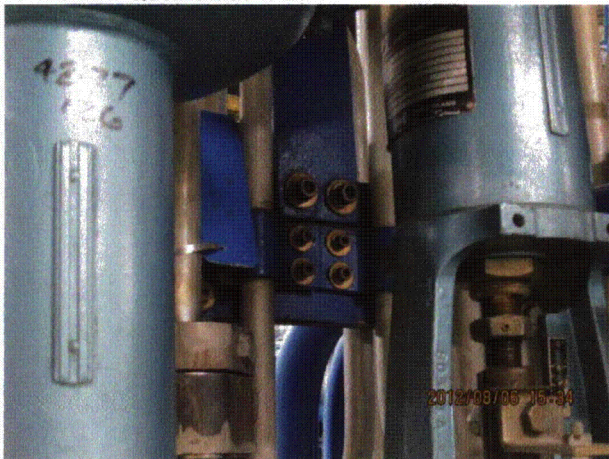
Equipment Description: HCU - (42-27 L-7 (North))



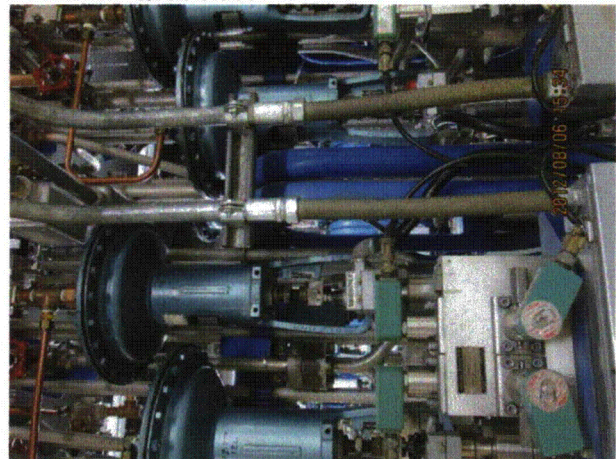
20120806-QuadCities-2 394



20120806-QuadCities-2 395



20120806-QuadCities-2 396



20120806-QuadCities-2 397

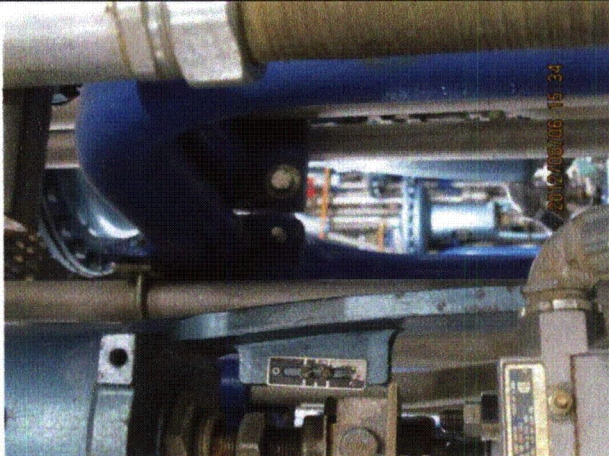
Status: Y N U

Seismic Walkdown Checklist (SWC)

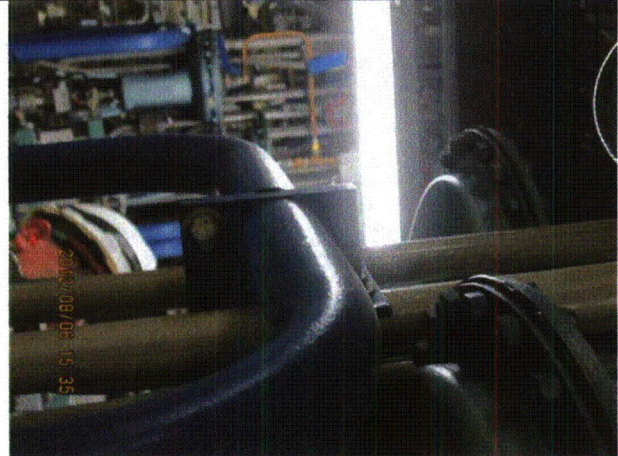
Equipment ID No.: 2-0305-42-27

Equipment Class: (0) Other

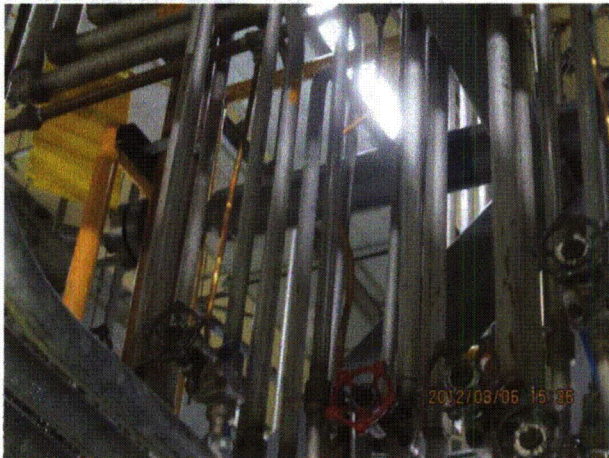
Equipment Description: HCU - (42-27 L-7 (North))



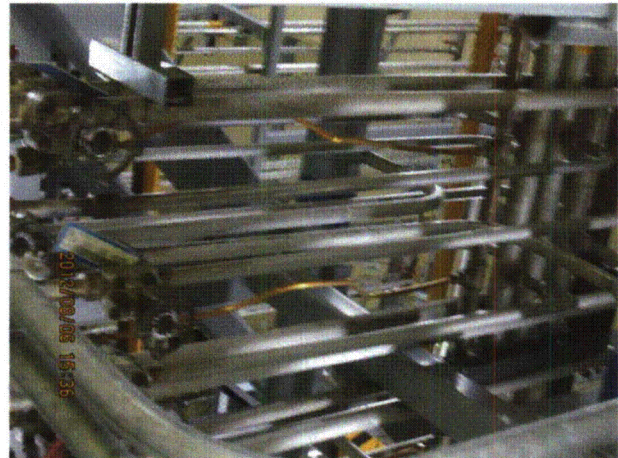
20120806-QuadCities-2 398



20120806-QuadCities-2 399



20120806-QuadCities-2 400



20120806-QuadCities-2 401

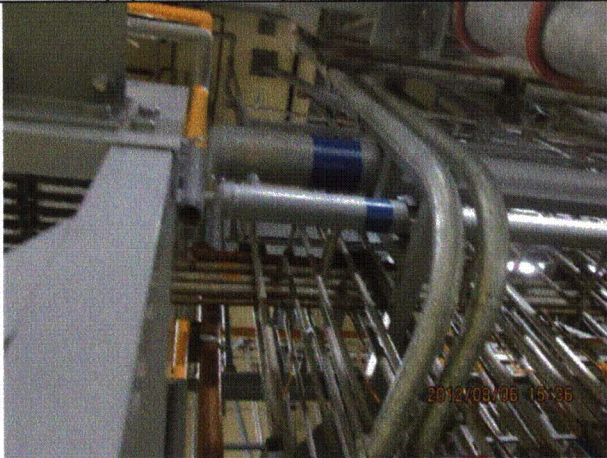
Status: Y N U

Seismic Walkdown Checklist (SWC)

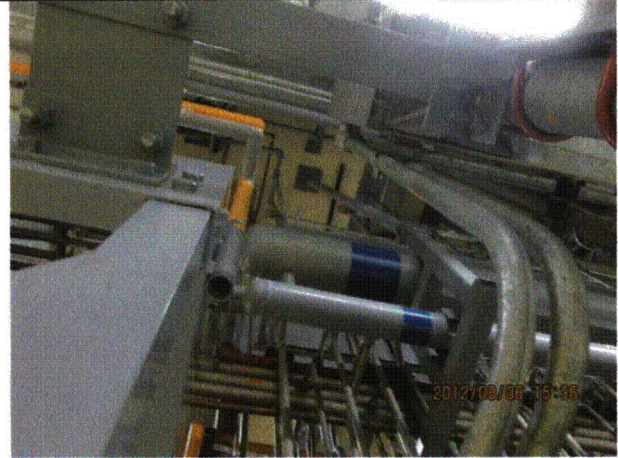
Equipment ID No.: 2-0305-42-27

Equipment Class: (0) Other

Equipment Description: HCU - (42-27 L-7 (North))



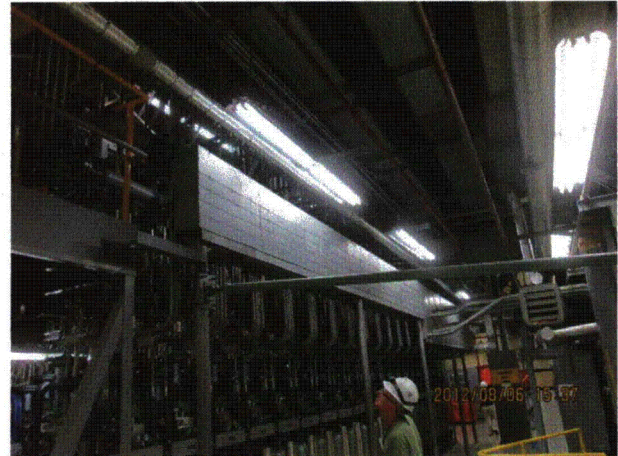
20120806-QuadCities-2 402



20120806-QuadCities-2 403



20120806-QuadCities-2 404



20120806-QuadCities-2 405

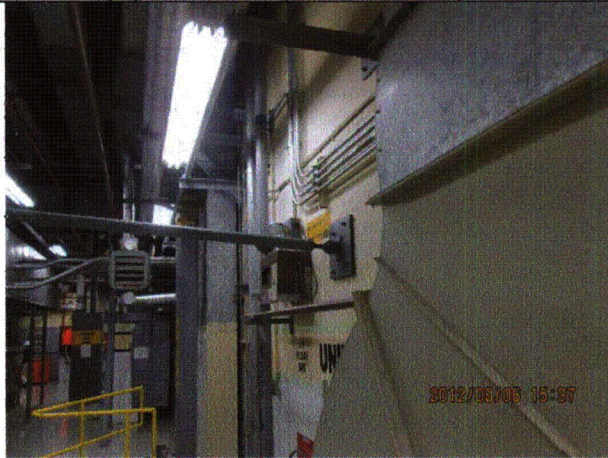
Status: Y N U

Seismic Walkdown Checklist (SWC)

Equipment ID No.: 2-0305-42-27

Equipment Class: (0) Other

Equipment Description: HCU - (42-27 L-7 (North))



20120806-QuadCities-2 406



20120806-QuadCities-2 407



20120806-QuadCities-2 408



20120806-QuadCities-2 409

Status: Y N U

Seismic Walkdown Checklist (SWC)

Equipment ID No.: 2-1001-145A

Equipment Class: (21) Tanks and Heat Exchangers

Equipment Description: HEAT EXCHANGER

Project: Quad Cities 2 SWEL

Location (Bldg, Elev, Room/Area): RB, 554.00 ft, ALL

Manufacturer/Model:

Instructions for Completing Checklist

This checklist may be used to document the results of the Seismic Walkdown of an item of equipment on the SWEL. The space below each of the following questions may be used to record the results of judgments and findings. Additional space is provided at the end of this checklist for documenting other comments.

Anchorage

1. Is anchorage configuration verification required (i.e., is the item one of the 50% of SWEL items requiring such verification)? No
Anchored to slab at bottom, supported from gallery steel at top.

2. Is the anchorage free of bent, broken, missing or loose hardware? Yes

3. Is the anchorage free of corrosion that is more than mild surface oxidation? Yes

4. Is the anchorage free of visible cracks in the concrete near the anchors? Yes
Minor shrinkage cracks in floor and grout pad at base judged to be acceptable.

5. Is the anchorage configuration consistent with plant documentation? (Note: This question only applies if the item is one of the 50% for which an anchorage configuration verification is required.) Not Applicable

6. Based on the above anchorage evaluations, is the anchorage free of potentially adverse seismic conditions? Yes

Interaction Effects

7. Are soft targets free from impact by nearby equipment or structures? Yes

Status: Y N U

Seismic Walkdown Checklist (SWC)

Equipment ID No.: 2-1001-145A

Equipment Class: (21) Tanks and Heat Exchangers

Equipment Description: HEAT EXCHANGER

8. Are overhead equipment, distribution systems, ceiling tiles and lighting, and masonry block walls not likely to collapse onto the equipment? Yes
Overhead light fixtures judged to be acceptable.
9. Do attached lines have adequate flexibility to avoid damage? Yes
10. Based on the above seismic interaction evaluations, is equipment free of potentially adverse seismic interaction effects? Yes

Other Adverse Conditions

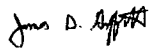
11. Have you looked for and found no adverse seismic conditions that could adversely affect the safety functions of the equipment? Yes

Comments

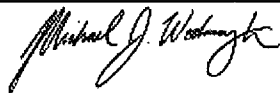
Seismic Walkdown Team: J. Griffith & M. Wodarcyk - 8/10/2012

No tag on equipment. Item verified to be correct by Equipment Operator.

Evaluated by:

 James Griffith

Date: 10/4/2012



Michael Wodarcyk

10/4/2012

Status: Y N U

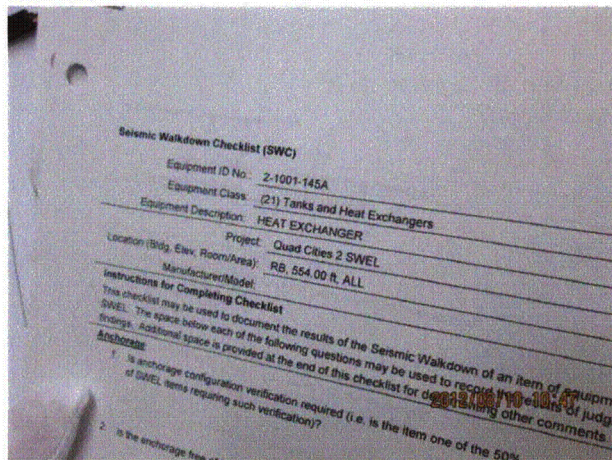
Seismic Walkdown Checklist (SWC)

Equipment ID No.: 2-1001-145A

Equipment Class: (21) Tanks and Heat Exchangers

Equipment Description: HEAT EXCHANGER

Photos



20120810-QuadCities-2 151

Status: Y N U

Seismic Walkdown Checklist (SWC)

Equipment ID No.: 2-1001-165A

Equipment Class: (7) Fluid-Operated Valves

Equipment Description: VALVE, RELIEF - 2A RHR HX TUBE SIDE RV

Project: Quad Cities 2 SWEL

Location (Bldg, Elev, Room/Area): RB, 554.00 ft, ALL

Manufacturer/Model:

Instructions for Completing Checklist

This checklist may be used to document the results of the Seismic Walkdown of an item of equipment on the SWEL. The space below each of the following questions may be used to record the results of judgments and findings. Additional space is provided at the end of this checklist for documenting other comments.

Anchorage

1. Is anchorage configuration verification required (i.e., is the item one of the 50% of SWEL items requiring such verification)? No

2. Is the anchorage free of bent, broken, missing or loose hardware? Not Applicable

3. Is the anchorage free of corrosion that is more than mild surface oxidation? Not Applicable

4. Is the anchorage free of visible cracks in the concrete near the anchors? Not Applicable

5. Is the anchorage configuration consistent with plant documentation? (Note: This question only applies if the item is one of the 50% for which an anchorage configuration verification is required.) Not Applicable

6. Based on the above anchorage evaluations, is the anchorage free of potentially adverse seismic conditions? Yes

Interaction Effects

7. Are soft targets free from impact by nearby equipment or structures? Yes

Status: Y N U

Seismic Walkdown Checklist (SWC)

Equipment ID No.: 2-1001-165A

Equipment Class: (7) Fluid-Operated Valves

Equipment Description: VALVE, RELIEF - 2A RHR HX TUBE SIDE RV

8. Are overhead equipment, distribution systems, ceiling tiles and lighting, and masonry block walls not likely to collapse onto the equipment?
Light fixture mounted to concrete beam judged to be acceptable. Yes
9. Do attached lines have adequate flexibility to avoid damage? Yes
10. Based on the above seismic interaction evaluations, is equipment free of potentially adverse seismic interaction effects? Yes

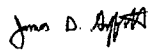
Other Adverse Conditions

11. Have you looked for and found no adverse seismic conditions that could adversely affect the safety functions of the equipment? Yes

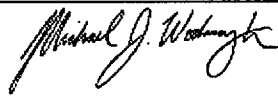
Comments

Seismic Walkdown Team: J. Griffith & M. Wodarczyk - 8/9/2012

Evaluated by:

 James Griffith

Date: 10/4/2012


Michael Wodarczyk

10/4/2012

Status: Y N U

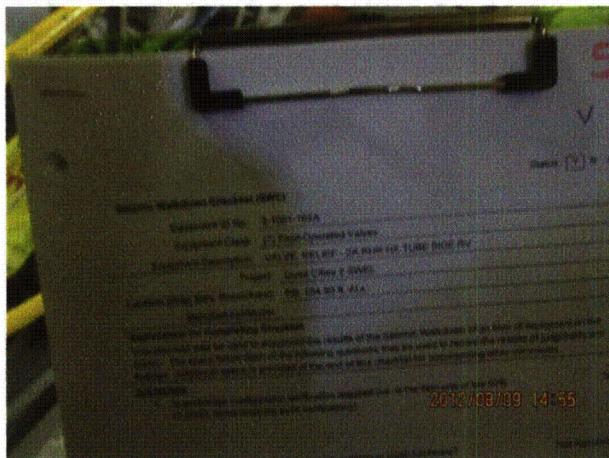
Seismic Walkdown Checklist (SWC)

Equipment ID No.: 2-1001-165A

Equipment Class: (7) Fluid-Operated Valves

Equipment Description: VALVE, RELIEF - 2A RHR HX TUBE SIDE RV

Photos



20120809-QuadCities-2 381



20120809-QuadCities-2 382



20120809-QuadCities-2 383



20120809-QuadCities-2 384

Status: Y N U

Seismic Walkdown Checklist (SWC)

Equipment ID No.: 2-1001-165A

Equipment Class: (7) Fluid-Operated Valves

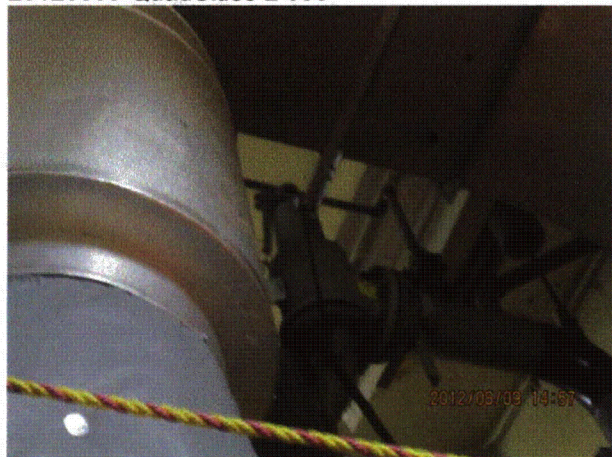
Equipment Description: VALVE, RELIEF - 2A RHR HX TUBE SIDE RV



20120809-QuadCities-2 385



20120809-QuadCities-2 386



20120809-QuadCities-2 387



20120809-QuadCities-2 388

Status: Y N U

Seismic Walkdown Checklist (SWC)

Equipment ID No.: 2-1001-165A

Equipment Class: (7) Fluid-Operated Valves

Equipment Description: VALVE, RELIEF - 2A RHR HX TUBE SIDE RV



20120809-QuadCities-2 389



20120809-QuadCities-2 390



20120809-QuadCities-2 391



20120809-QuadCities-2 392

Status: Y N U

Seismic Walkdown Checklist (SWC)

Equipment ID No.: 2-1001-165A

Equipment Class: (7) Fluid-Operated Valves

Equipment Description: VALVE, RELIEF - 2A RHR HX TUBE SIDE RV



20120809-QuadCities-2 393

Status: Y N U

Seismic Walkdown Checklist (SWC)

Equipment ID No.: 2-1001-166A

Equipment Class: (7) Fluid-Operated Valves

Equipment Description: VALVE, RELIEF - 2A RHR HX SHELL SIDE RV

Project: Quad Cities 2 SWEL

Location (Bldg, Elev, Room/Area): RB, 580.00 ft, ALL

Manufacturer/Model:

Instructions for Completing Checklist

This checklist may be used to document the results of the Seismic Walkdown of an item of equipment on the SWEL. The space below each of the following questions may be used to record the results of judgments and findings. Additional space is provided at the end of this checklist for documenting other comments.

Anchorage

- | | |
|--|----------------|
| 1. Is anchorage configuration verification required (i.e., is the item one of the 50% of SWEL items requiring such verification)? | No |
| 2. Is the anchorage free of bent, broken, missing or loose hardware? | Not Applicable |
| 3. Is the anchorage free of corrosion that is more than mild surface oxidation? | Not Applicable |
| 4. Is the anchorage free of visible cracks in the concrete near the anchors? | Not Applicable |
| 5. Is the anchorage configuration consistent with plant documentation? (Note: This question only applies if the item is one of the 50% for which an anchorage configuration verification is required.) | Not Applicable |
| 6. Based on the above anchorage evaluations, is the anchorage free of potentially adverse seismic conditions? | Yes |

Interaction Effects

- | | |
|---|-----|
| 7. Are soft targets free from impact by nearby equipment or structures? | Yes |
|---|-----|

Status: Y N U

Seismic Walkdown Checklist (SWC)

Equipment ID No.: 2-1001-166A

Equipment Class: (7) Fluid-Operated Valves

Equipment Description: VALVE, RELIEF - 2A RHR HX SHELL SIDE RV

Lead shielding support chains are taut; thus, lead shielding configuration is not expected to swing. Support chains near valve flange judged to be acceptable.

8. Are overhead equipment, distribution systems, ceiling tiles and lighting, and masonry block walls not likely to collapse onto the equipment? Yes
Valve protected by gallery support beam directly above.
9. Do attached lines have adequate flexibility to avoid damage? Yes
10. Based on the above seismic interaction evaluations, is equipment free of potentially adverse seismic interaction effects? Yes

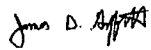
Other Adverse Conditions

11. Have you looked for and found no adverse seismic conditions that could adversely affect the safety functions of the equipment? Yes

Comments

Seismic Walkdown Team: J. Griffith & M. Wodarczyk - 8/9/2012

Evaluated by:

 James Griffith

Date: 10/4/2012


Michael Wodarczyk

10/4/2012

Status: Y N U

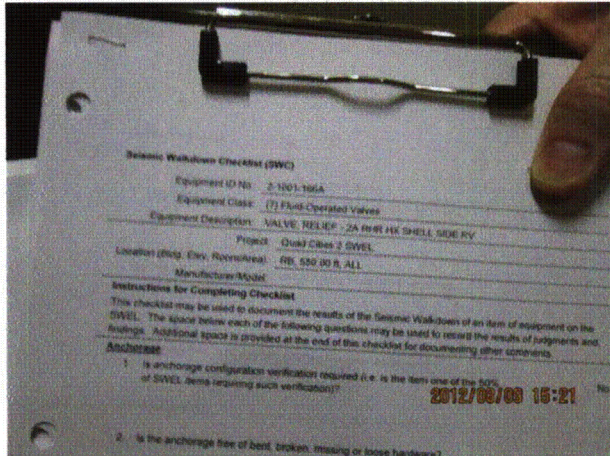
Seismic Walkdown Checklist (SWC)

Equipment ID No.: 2-1001-166A

Equipment Class: (7) Fluid-Operated Valves

Equipment Description: VALVE, RELIEF - 2A RHR HX SHELL SIDE RV

Photos



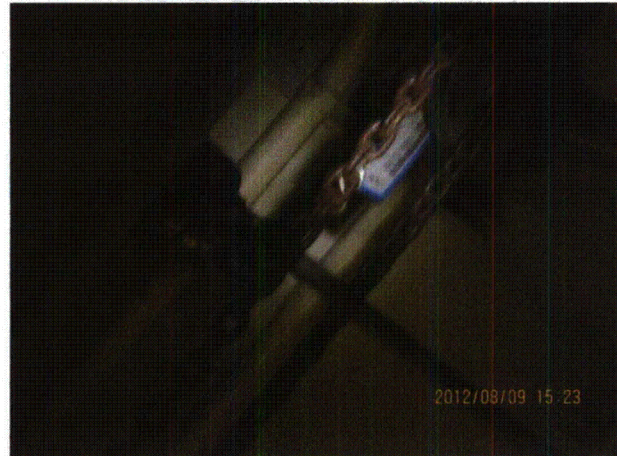
20120809-QuadCities-2 446



20120809-QuadCities-2 447



20120809-QuadCities-2 448



20120809-QuadCities-2 449

Status: Y N U

Seismic Walkdown Checklist (SWC)

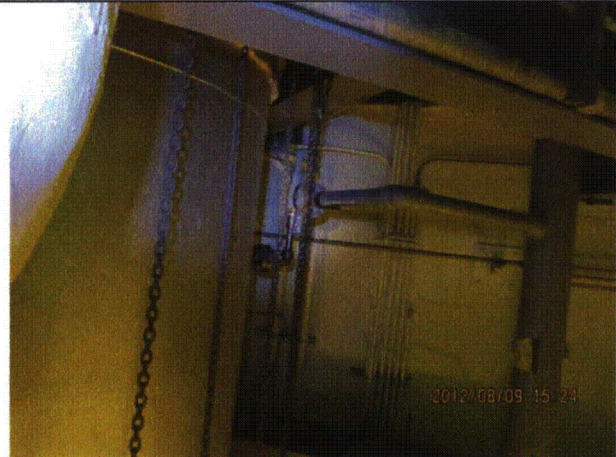
Equipment ID No.: 2-1001-166A

Equipment Class: (7) Fluid-Operated Valves

Equipment Description: VALVE, RELIEF - 2A RHR HX SHELL SIDE RV



20120809-QuadCities-2 450



20120809-QuadCities-2 451



20120809-QuadCities-2 452



20120809-QuadCities-2 453

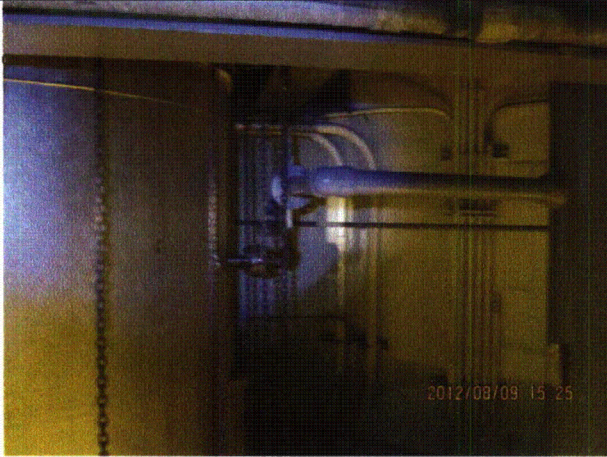
Status: Y N U

Seismic Walkdown Checklist (SWC)

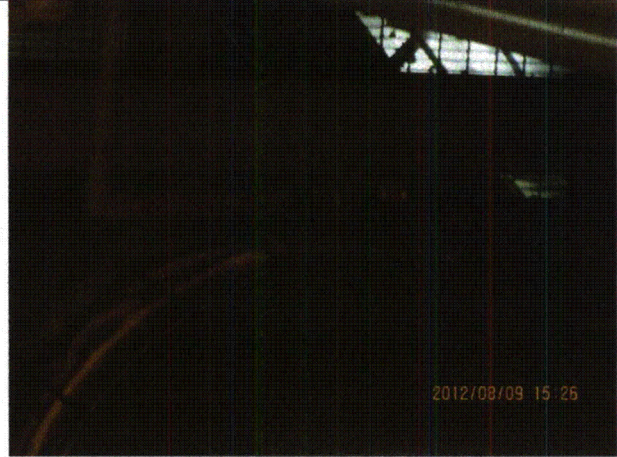
Equipment ID No.: 2-1001-166A

Equipment Class: (7) Fluid-Operated Valves

Equipment Description: VALVE, RELIEF - 2A RHR HX SHELL SIDE RV



20120809-QuadCities-2 454



20120809-QuadCities-2 455



20120809-QuadCities-2 456



20120809-QuadCities-2 457

Status: Y N U

Seismic Walkdown Checklist (SWC)

Equipment ID No.: 2-1001-166A

Equipment Class: (7) Fluid-Operated Valves

Equipment Description: VALVE, RELIEF - 2A RHR HX SHELL SIDE RV



20120809-QuadCities-2 458

Status: Y N U

Seismic Walkdown Checklist (SWC)

Equipment ID No.: 2-1001-16A

Equipment Class: (8) Motor-Operated and Solenoid-Operated Valves

Equipment Description: VALVE, HX 2A BYPASS - 2A RHR HX BYP VLV

Project: Quad Cities 2 SWEL

Location (Bldg, Elev, Room/Area): RB, 554.00 ft, ALL

Manufacturer/Model:

Instructions for Completing Checklist

This checklist may be used to document the results of the Seismic Walkdown of an item of equipment on the SWEL. The space below each of the following questions may be used to record the results of judgments and findings. Additional space is provided at the end of this checklist for documenting other comments.

Anchorage

1. Is anchorage configuration verification required (i.e., is the item one of the 50% of SWEL items requiring such verification)? No

2. Is the anchorage free of bent, broken, missing or loose hardware? Not Applicable

3. Is the anchorage free of corrosion that is more than mild surface oxidation? Not Applicable

4. Is the anchorage free of visible cracks in the concrete near the anchors? Not Applicable

5. Is the anchorage configuration consistent with plant documentation? (Note: This question only applies if the item is one of the 50% for which an anchorage configuration verification is required.) Not Applicable

6. Based on the above anchorage evaluations, is the anchorage free of potentially adverse seismic conditions? Yes

Interaction Effects

7. Are soft targets free from impact by nearby equipment or structures? Yes

Status: Y N U

Seismic Walkdown Checklist (SWC)

Equipment ID No.: 2-1001-16A

Equipment Class: (8) Motor-Operated and Solenoid-Operated Valves

Equipment Description: VALVE, HX 2A BYPASS - 2A RHR HX BYP VLV

8. Are overhead equipment, distribution systems, ceiling tiles and lighting, and masonry block walls not likely to collapse onto the equipment? Yes
9. Do attached lines have adequate flexibility to avoid damage? Yes
10. Based on the above seismic interaction evaluations, is equipment free of potentially adverse seismic interaction effects? Yes

Other Adverse Conditions

11. Have you looked for and found no adverse seismic conditions that could adversely affect the safety functions of the equipment? Yes

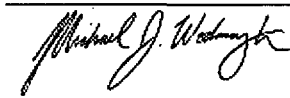
Comments

Seismic Walkdown Team: J. Griffith & M. Wodarczyk - 8/9/2012

Evaluated by:

 James Griffith

Date: 10/4/2012


Michael Wodarczyk

10/4/2012

Status: Y N U

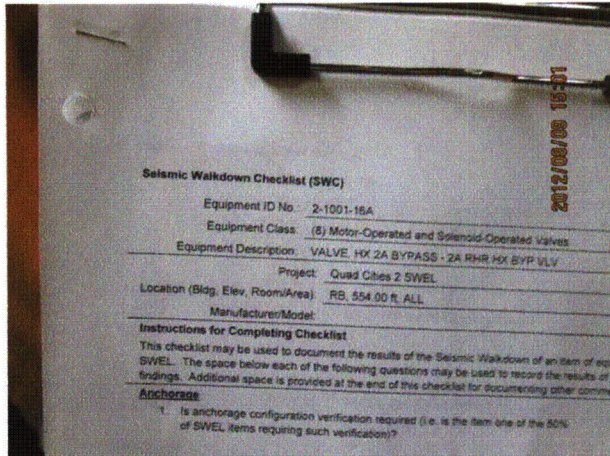
Seismic Walkdown Checklist (SWC)

Equipment ID No.: 2-1001-16A

Equipment Class: (8) Motor-Operated and Solenoid-Operated Valves

Equipment Description: VALVE, HX 2A BYPASS - 2A RHR HX BYP VLV

Photos



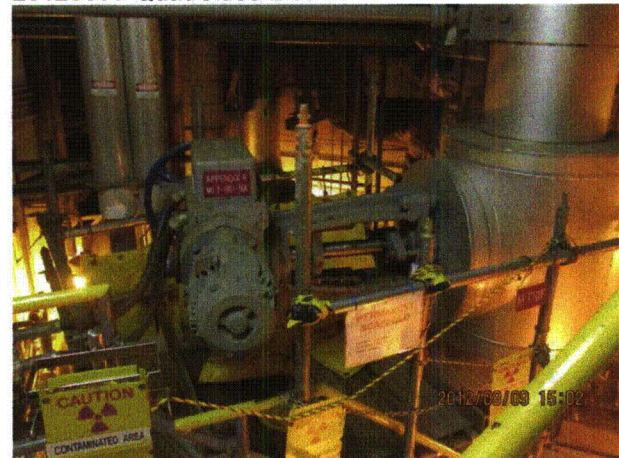
20120809-QuadCities-2 394



20120809-QuadCities-2 395



20120809-QuadCities-2 396



20120809-QuadCities-2 397

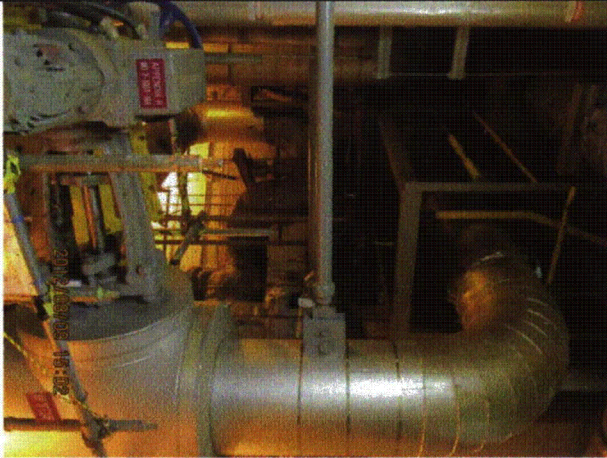
Status: Y N U

Seismic Walkdown Checklist (SWC)

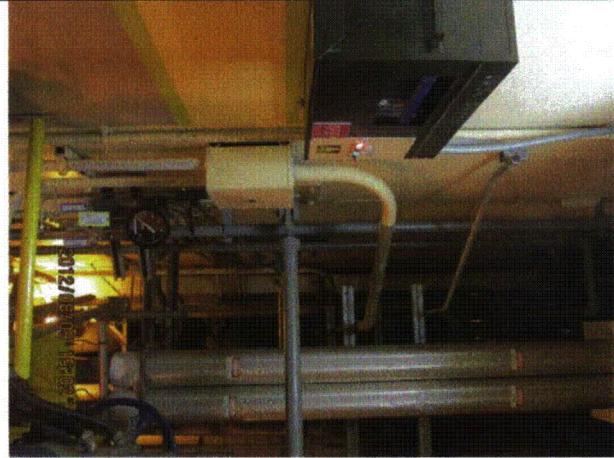
Equipment ID No.: 2-1001-16A

Equipment Class: (8) Motor-Operated and Solenoid-Operated Valves

Equipment Description: VALVE, HX 2A BYPASS - 2A RHR HX BYP VLV



20120809-QuadCities-2 398



20120809-QuadCities-2 399



20120809-QuadCities-2 400



20120809-QuadCities-2 401

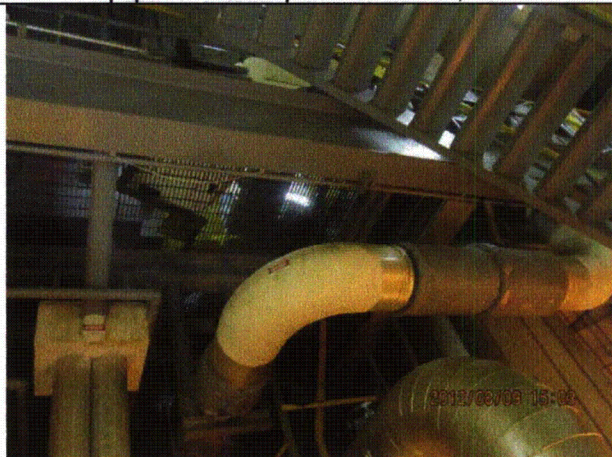
Status: Y N U

Seismic Walkdown Checklist (SWC)

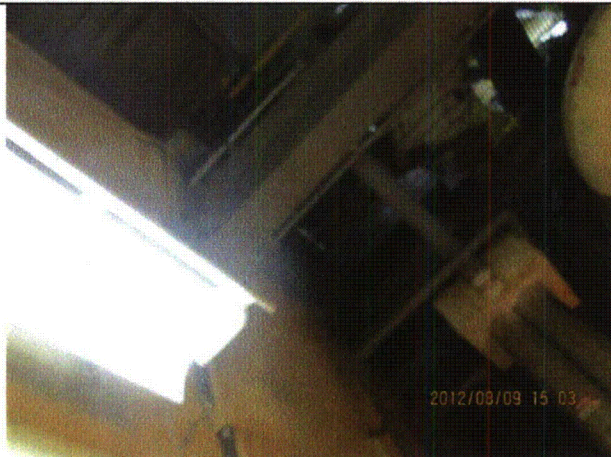
Equipment ID No.: 2-1001-16A

Equipment Class: (8) Motor-Operated and Solenoid-Operated Valves

Equipment Description: VALVE, HX 2A BYPASS - 2A RHR HX BYP VLV



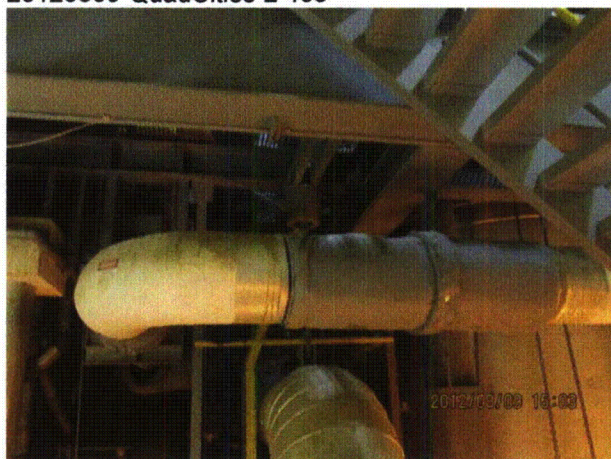
20120809-QuadCities-2 402



20120809-QuadCities-2 403



20120809-QuadCities-2 404



20120809-QuadCities-2 405

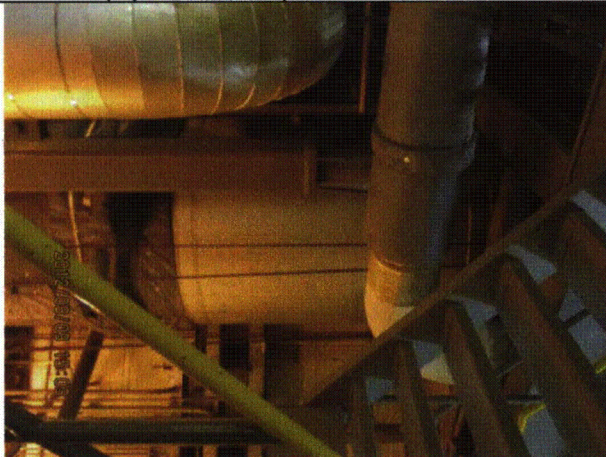
Status: Y N U

Seismic Walkdown Checklist (SWC)

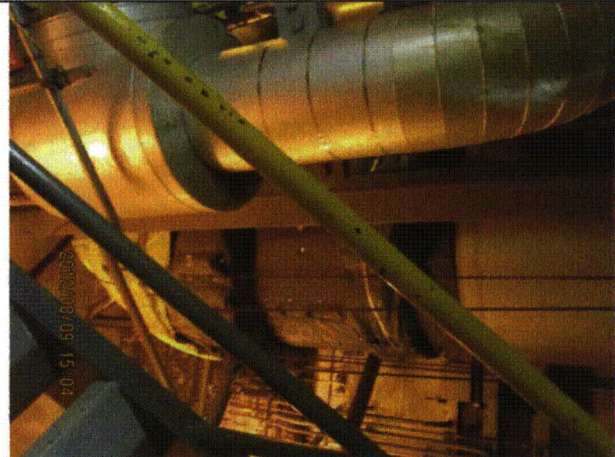
Equipment ID No.: 2-1001-16A

Equipment Class: (8) Motor-Operated and Solenoid-Operated Valves

Equipment Description: VALVE, HX 2A BYPASS - 2A RHR HX BYP VLV



20120809-QuadCities-2 406



20120809-QuadCities-2 407



20120809-QuadCities-2 408



20120809-QuadCities-2 409

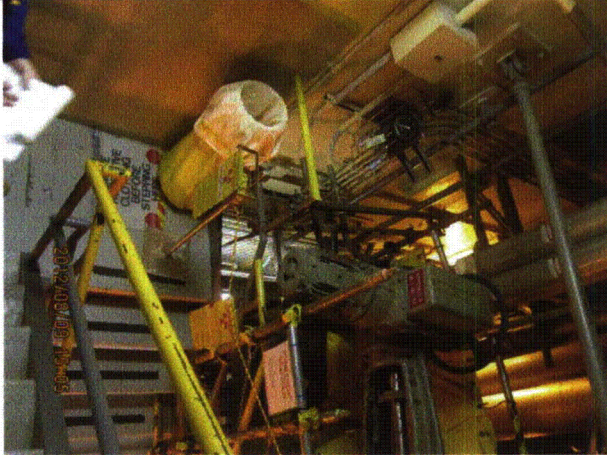
Status: Y N U

Seismic Walkdown Checklist (SWC)

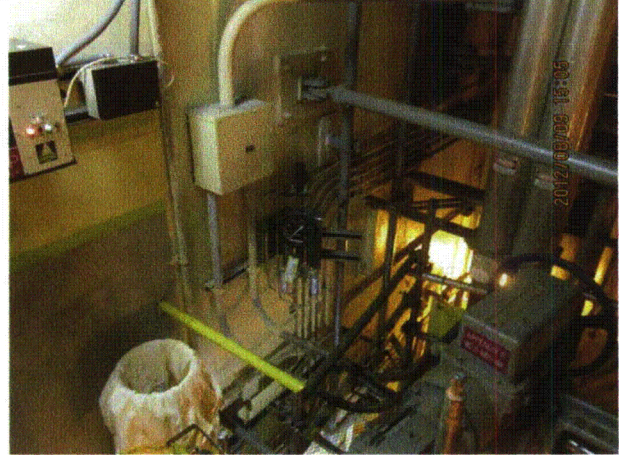
Equipment ID No.: 2-1001-16A

Equipment Class: (8) Motor-Operated and Solenoid-Operated Valves

Equipment Description: VALVE, HX 2A BYPASS - 2A RHR HX BYP VLV



20120809-QuadCities-2 410



20120809-QuadCities-2 411



20120809-QuadCities-2 412

Status: Y N U

Seismic Walkdown Checklist (SWC)

Equipment ID No.: 2-1001-22A

Equipment Class: (7) Fluid-Operated Valves

Equipment Description: VALVE, RELIEF - 2A LPCI LOOP RV

Project: Quad Cities 2 SWEL

Location (Bldg, Elev, Room/Area): RB, 554.00 ft, ALL

Manufacturer/Model:

Instructions for Completing Checklist

This checklist may be used to document the results of the Seismic Walkdown of an item of equipment on the SWEL. The space below each of the following questions may be used to record the results of judgments and findings. Additional space is provided at the end of this checklist for documenting other comments.

Anchorage

- | | | |
|----|---|----------------|
| 1. | Is anchorage configuration verification required (i.e., is the item one of the 50% of SWEL items requiring such verification)? | No |
| 2. | Is the anchorage free of bent, broken, missing or loose hardware? | Not Applicable |
| 3. | Is the anchorage free of corrosion that is more than mild surface oxidation? | Not Applicable |
| 4. | Is the anchorage free of visible cracks in the concrete near the anchors? | Not Applicable |
| 5. | Is the anchorage configuration consistent with plant documentation? (Note: This question only applies if the item is one of the 50% for which an anchorage configuration verification is required.) | Not Applicable |
| 6. | Based on the above anchorage evaluations, is the anchorage free of potentially adverse seismic conditions? | Yes |

Interaction Effects

- | | | |
|----|--|-----|
| 7. | Are soft targets free from impact by nearby equipment or structures? | Yes |
|----|--|-----|

Status: Y N U

Seismic Walkdown Checklist (SWC)

Equipment ID No.: 2-1001-22A

Equipment Class: (7) Fluid-Operated Valves

Equipment Description: VALVE, RELIEF - 2A LPCI LOOP RV


8. Are overhead equipment, distribution systems, ceiling tiles and lighting, and masonry block walls not likely to collapse onto the equipment? Yes
9. Do attached lines have adequate flexibility to avoid damage? Yes
10. Based on the above seismic interaction evaluations, is equipment free of potentially adverse seismic interaction effects? Yes

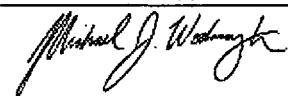
Other Adverse Conditions

11. Have you looked for and found no adverse seismic conditions that could adversely affect the safety functions of the equipment? Yes

Comments

Seismic Walkdown Team: J. Griffith & M. Wodarczyk - 8/10/2012

Evaluated by:  James Griffith Date: 10/4/2012

 Michael Wodarczyk 10/4/2012

Status: Y N U

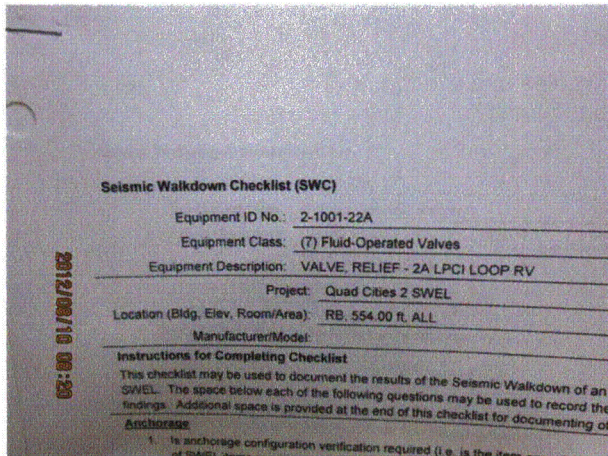
Seismic Walkdown Checklist (SWC)

Equipment ID No.: 2-1001-22A

Equipment Class: (7) Fluid-Operated Valves

Equipment Description: VALVE, RELIEF - 2A LPCI LOOP RV

Photos



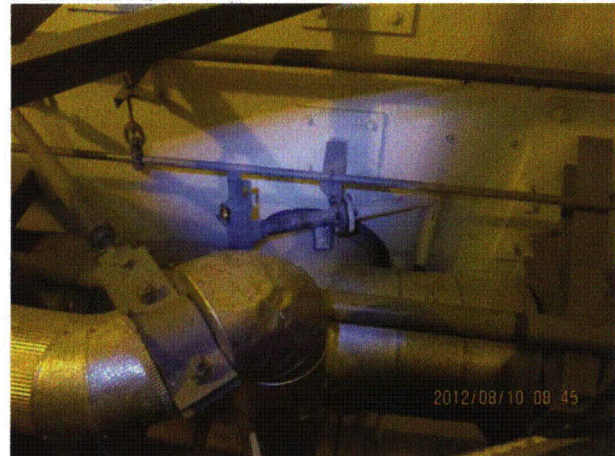
20120810-QuadCities-2 006



20120810-QuadCities-2 051



20120810-QuadCities-2 052



20120810-QuadCities-2 053

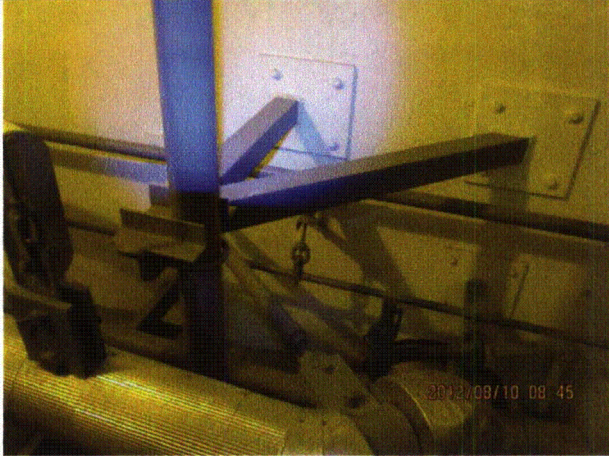
Status: Y N U

Seismic Walkdown Checklist (SWC)

Equipment ID No.: 2-1001-22A

Equipment Class: (7) Fluid-Operated Valves

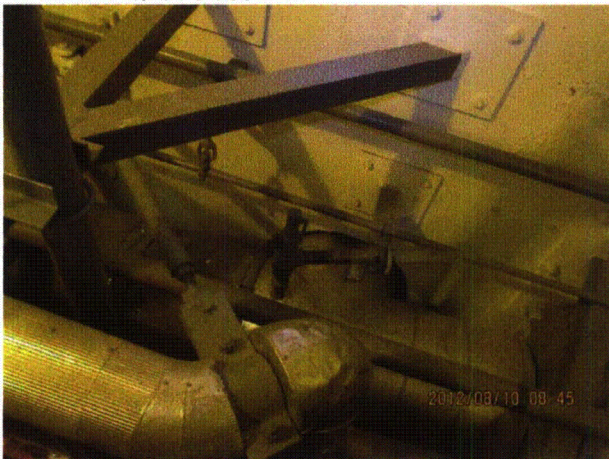
Equipment Description: VALVE, RELIEF - 2A LPCI LOOP RV



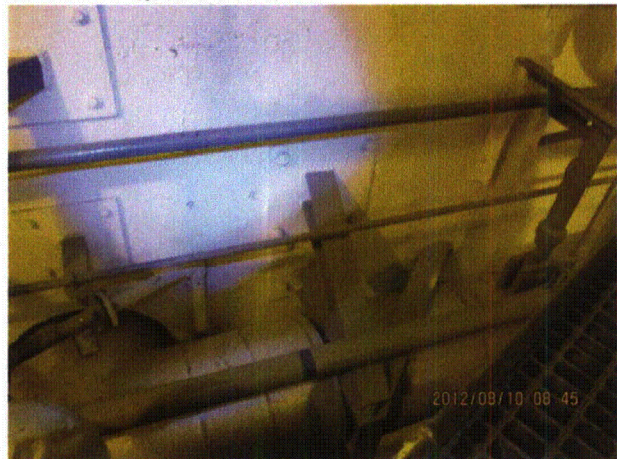
20120810-QuadCities-2 054



20120810-QuadCities-2 055



20120810-QuadCities-2 056



20120810-QuadCities-2 057

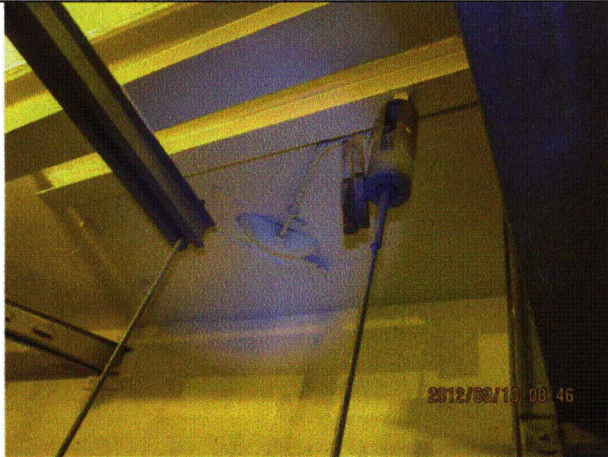
Status: Y N U

Seismic Walkdown Checklist (SWC)

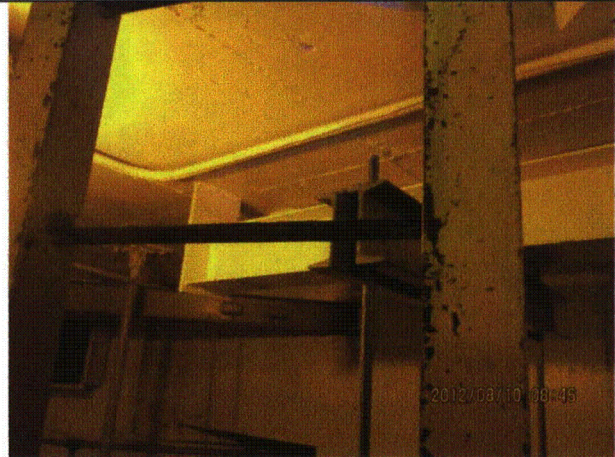
Equipment ID No.: 2-1001-22A

Equipment Class: (7) Fluid-Operated Valves

Equipment Description: VALVE, RELIEF - 2A LPCI LOOP RV



20120810-QuadCities-2 058



20120810-QuadCities-2 059



20120810-QuadCities-2 060



20120810-QuadCities-2 061

Status: Y N U

Seismic Walkdown Checklist (SWC)

Equipment ID No.: 2-1001-29A

Equipment Class: (8) Motor-Operated and Solenoid-Operated Valves

Equipment Description: VALVE, LOOP A LPCI INJ - LPCI OUTBOARD INJECTION TO A RECIRC

Project: Quad Cities 2 SWEL

Location (Bldg, Elev, Room/Area): RB, 554.00 ft, ALL

Manufacturer/Model:

Instructions for Completing Checklist

This checklist may be used to document the results of the Seismic Walkdown of an item of equipment on the SWEL. The space below each of the following questions may be used to record the results of judgments and findings. Additional space is provided at the end of this checklist for documenting other comments.

Anchorage

1. Is anchorage configuration verification required (i.e., is the item one of the 50% of SWEL items requiring such verification)? No

2. Is the anchorage free of bent, broken, missing or loose hardware? Not Applicable

3. Is the anchorage free of corrosion that is more than mild surface oxidation? Not Applicable

4. Is the anchorage free of visible cracks in the concrete near the anchors? Not Applicable

5. Is the anchorage configuration consistent with plant documentation? (Note: This question only applies if the item is one of the 50% for which an anchorage configuration verification is required.) Not Applicable

6. Based on the above anchorage evaluations, is the anchorage free of potentially adverse seismic conditions? Yes

Interaction Effects

7. Are soft targets free from impact by nearby equipment or structures? Yes

Status: Y N U

Seismic Walkdown Checklist (SWC)

Equipment ID No.: 2-1001-29A

Equipment Class: (8) Motor-Operated and Solenoid-Operated Valves

Equipment Description: VALVE, LOOP A LPCI INJ - LPCI OUTBOARD INJECTION TO A RECIRC

8. Are overhead equipment, distribution systems, ceiling tiles and lighting, and masonry block walls not likely to collapse onto the equipment? Yes
9. Do attached lines have adequate flexibility to avoid damage? Yes
10. Based on the above seismic interaction evaluations, is equipment free of potentially adverse seismic interaction effects? Yes

Other Adverse Conditions

11. Have you looked for and found no adverse seismic conditions that could adversely affect the safety functions of the equipment? Yes

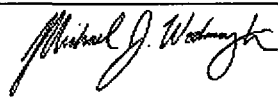
Comments

Seismic Walkdown Team: J. Griffith & M. Wodarczyk - 8/10/2012

Evaluated by:

 James Griffith

Date: 10/4/2012


Michael Wodarczyk

10/4/2012

Status: Y N U

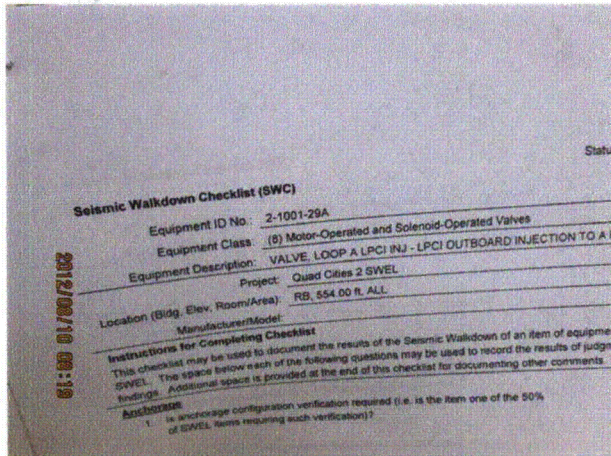
Seismic Walkdown Checklist (SWC)

Equipment ID No.: 2-1001-29A

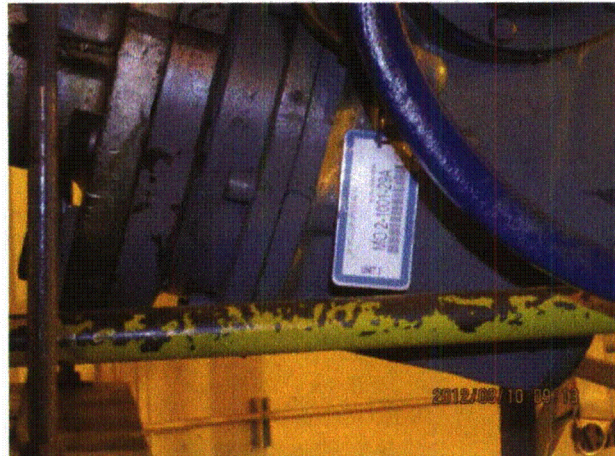
Equipment Class: (8) Motor-Operated and Solenoid-Operated Valves

Equipment Description: VALVE, LOOP A LPCI INJ - LPCI OUTBOARD INJECTION TO A RECIRC

Photos



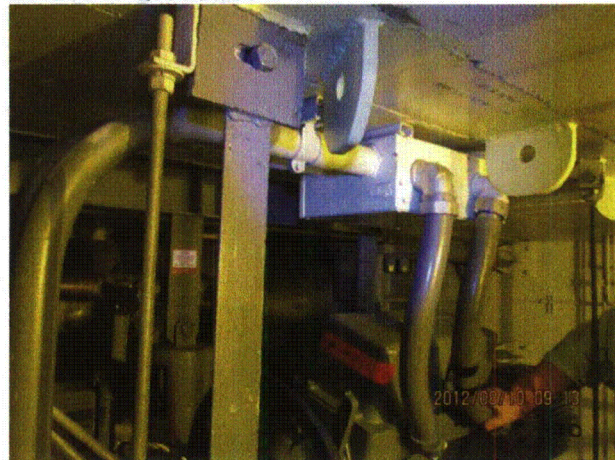
20120810-QuadCities-2 003



20120810-QuadCities-2 134



20120810-QuadCities-2 135



20120810-QuadCities-2 136

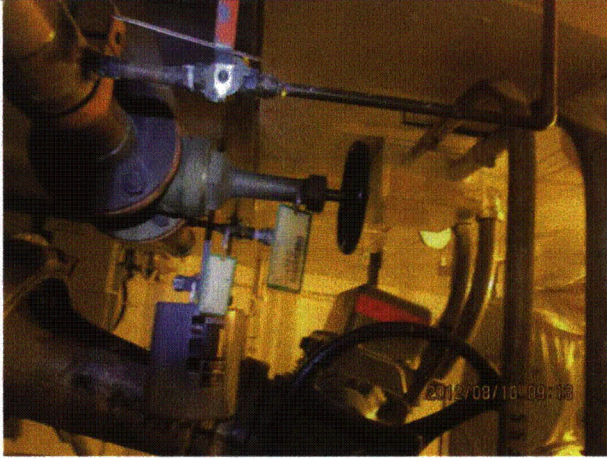
Status: Y N U

Seismic Walkdown Checklist (SWC)

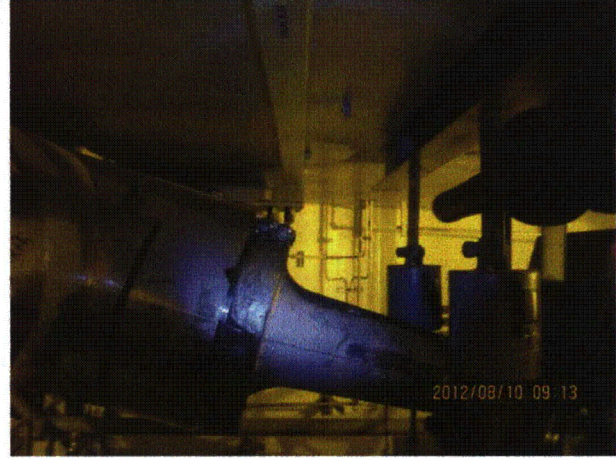
Equipment ID No.: 2-1001-29A

Equipment Class: (8) Motor-Operated and Solenoid-Operated Valves

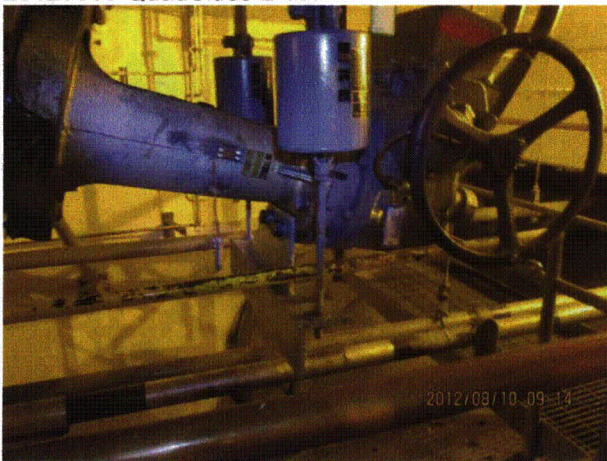
Equipment Description: VALVE, LOOP A LPCI INJ - LPCI OUTBOARD INJECTION TO A RECIRC



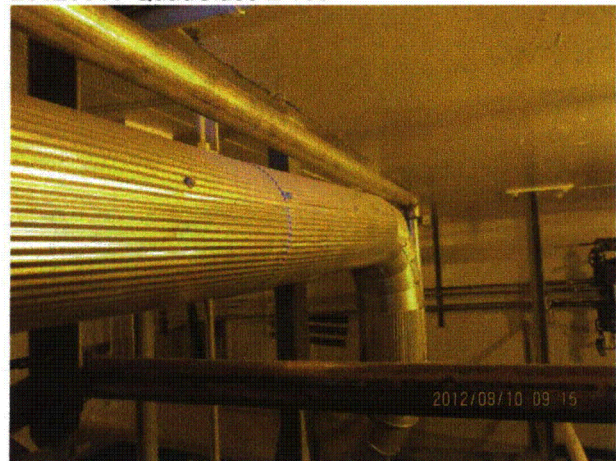
20120810-QuadCities-2 137



20120810-QuadCities-2 138



20120810-QuadCities-2 139



20120810-QuadCities-2 140

Status: Y N U

Seismic Walkdown Checklist (SWC)

Equipment ID No.: 2-1001-34A

Equipment Class: (8) Motor-Operated and Solenoid-Operated Valves

Equipment Description: VALVE, TORUS CLG - 2A TORUS SPRAY/CLG SV

Project: Quad Cities 2 SWEL

Location (Bldg, Elev, Room/Area): RB, 554.00 ft, ALL

Manufacturer/Model:

Instructions for Completing Checklist

This checklist may be used to document the results of the Seismic Walkdown of an item of equipment on the SWEL. The space below each of the following questions may be used to record the results of judgments and findings. Additional space is provided at the end of this checklist for documenting other comments.

Anchorage

1. Is anchorage configuration verification required (i.e., is the item one of the 50% of SWEL items requiring such verification)? No

2. Is the anchorage free of bent, broken, missing or loose hardware? Not Applicable

3. Is the anchorage free of corrosion that is more than mild surface oxidation? Not Applicable

4. Is the anchorage free of visible cracks in the concrete near the anchors? Not Applicable

5. Is the anchorage configuration consistent with plant documentation? (Note: This question only applies if the item is one of the 50% for which an anchorage configuration verification is required.) Not Applicable

6. Based on the above anchorage evaluations, is the anchorage free of potentially adverse seismic conditions? Yes

Interaction Effects

7. Are soft targets free from impact by nearby equipment or structures? Yes

Status: Y N U

Seismic Walkdown Checklist (SWC)

Equipment ID No.: 2-1001-34A

Equipment Class: (8) Motor-Operated and Solenoid-Operated Valves

Equipment Description: VALVE, TORUS CLG - 2A TORUS SPRAY/CLG SV

8. Are overhead equipment, distribution systems, ceiling tiles and lighting, and masonry block walls not likely to collapse onto the equipment? Yes
9. Do attached lines have adequate flexibility to avoid damage? Yes
10. Based on the above seismic interaction evaluations, is equipment free of potentially adverse seismic interaction effects? Yes

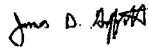
Other Adverse Conditions

11. Have you looked for and found no adverse seismic conditions that could adversely affect the safety functions of the equipment? Yes

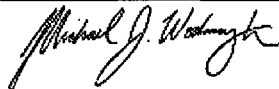
Comments

Seismic Walkdown Team: J. Griffith & M. Wodarczyk - 8/10/2012

Evaluated by:

 James Griffith

Date: 10/4/2012



Michael Wodarczyk

10/4/2012

Status: Y N U

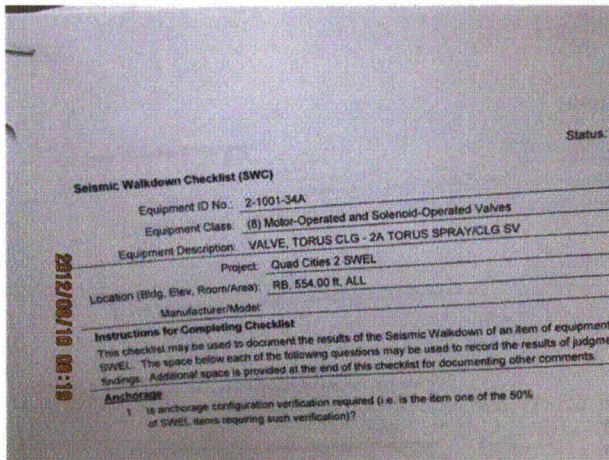
Seismic Walkdown Checklist (SWC)

Equipment ID No.: 2-1001-34A

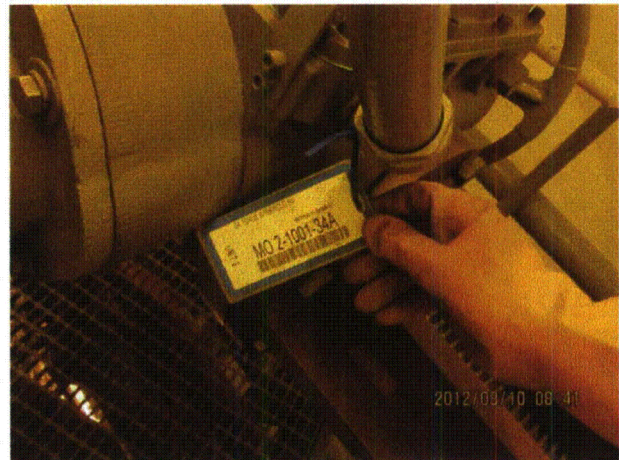
Equipment Class: (8) Motor-Operated and Solenoid-Operated Valves

Equipment Description: VALVE, TORUS CLG - 2A TORUS SPRAY/CLG SV

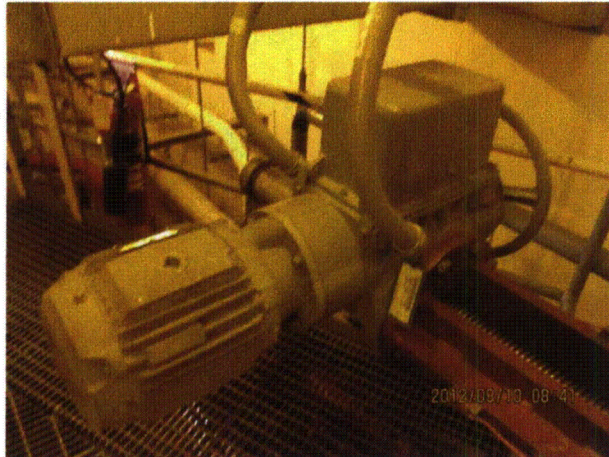
Photos



20120810-QuadCities-2 004



20120810-QuadCities-2 038



20120810-QuadCities-2 039



20120810-QuadCities-2 040

Status: Y N U

Seismic Walkdown Checklist (SWC)

Equipment ID No.: 2-1001-34A

Equipment Class: (8) Motor-Operated and Solenoid-Operated Valves

Equipment Description: VALVE, TORUS CLG - 2A TORUS SPRAY/CLG SV



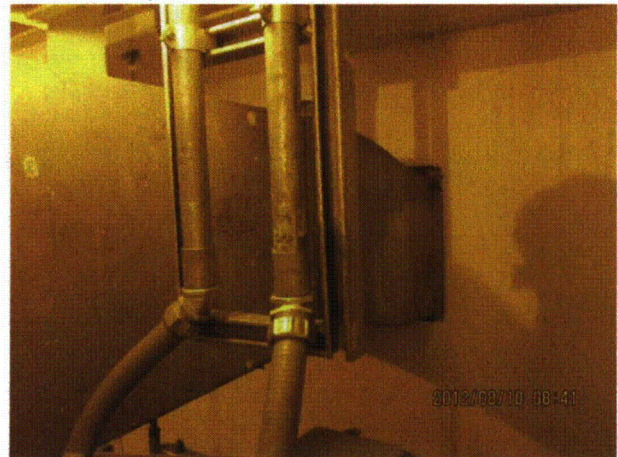
20120810-QuadCities-2 041



20120810-QuadCities-2 042



20120810-QuadCities-2 043



20120810-QuadCities-2 044

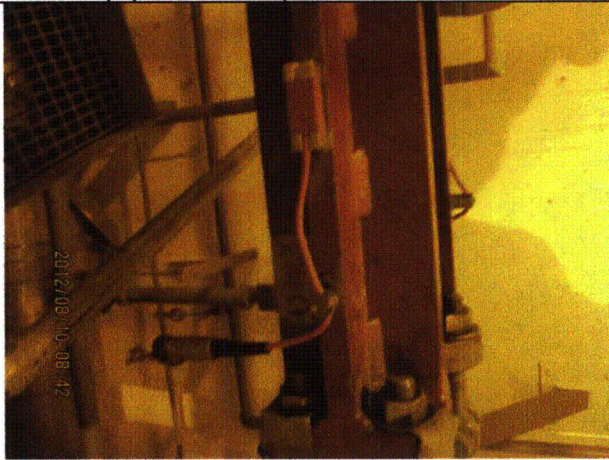
Status: Y N U

Seismic Walkdown Checklist (SWC)

Equipment ID No.: 2-1001-34A

Equipment Class: (8) Motor-Operated and Solenoid-Operated Valves

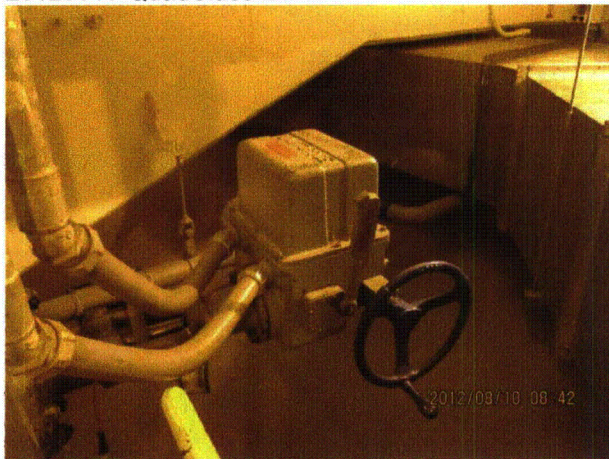
Equipment Description: VALVE, TORUS CLG - 2A TORUS SPRAY/CLG SV



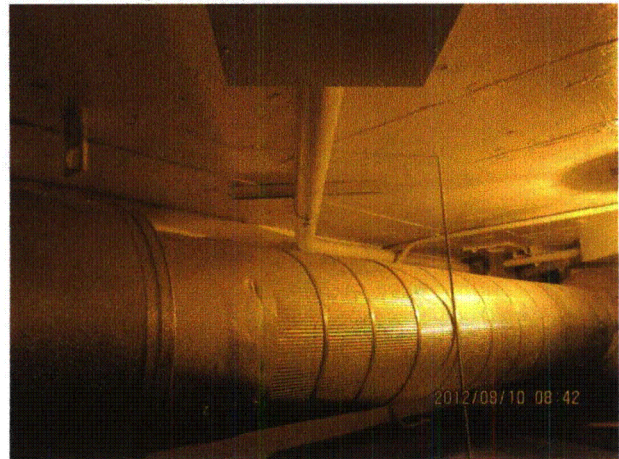
20120810-QuadCities-2 045



20120810-QuadCities-2 046



20120810-QuadCities-2 047



20120810-QuadCities-2 048

Status: Y N U

Seismic Walkdown Checklist (SWC)

Equipment ID No.: 2-1001-34A

Equipment Class: (8) Motor-Operated and Solenoid-Operated Valves

Equipment Description: VALVE, TORUS CLG - 2A TORUS SPRAY/CLG SV



20120810-QuadCities-2 049



20120810-QuadCities-2 050