



Figure D-10.
BBNPP Forest Area 13
Potential Roost Tree Locations



NORMANDEAU ASSOCIATES
ENVIRONMENTAL CONSULTANTS
400 Old Reading Pike, Bldg A, Suite 101 Stowe, PA 19464

date: 11/29/10
prepared by: s.sherman
project: 22474.000

rev. date: 01/09/11, 09/15/11
prepared for: c. roche
file name: Area13_UP_AppendixFig_Rev

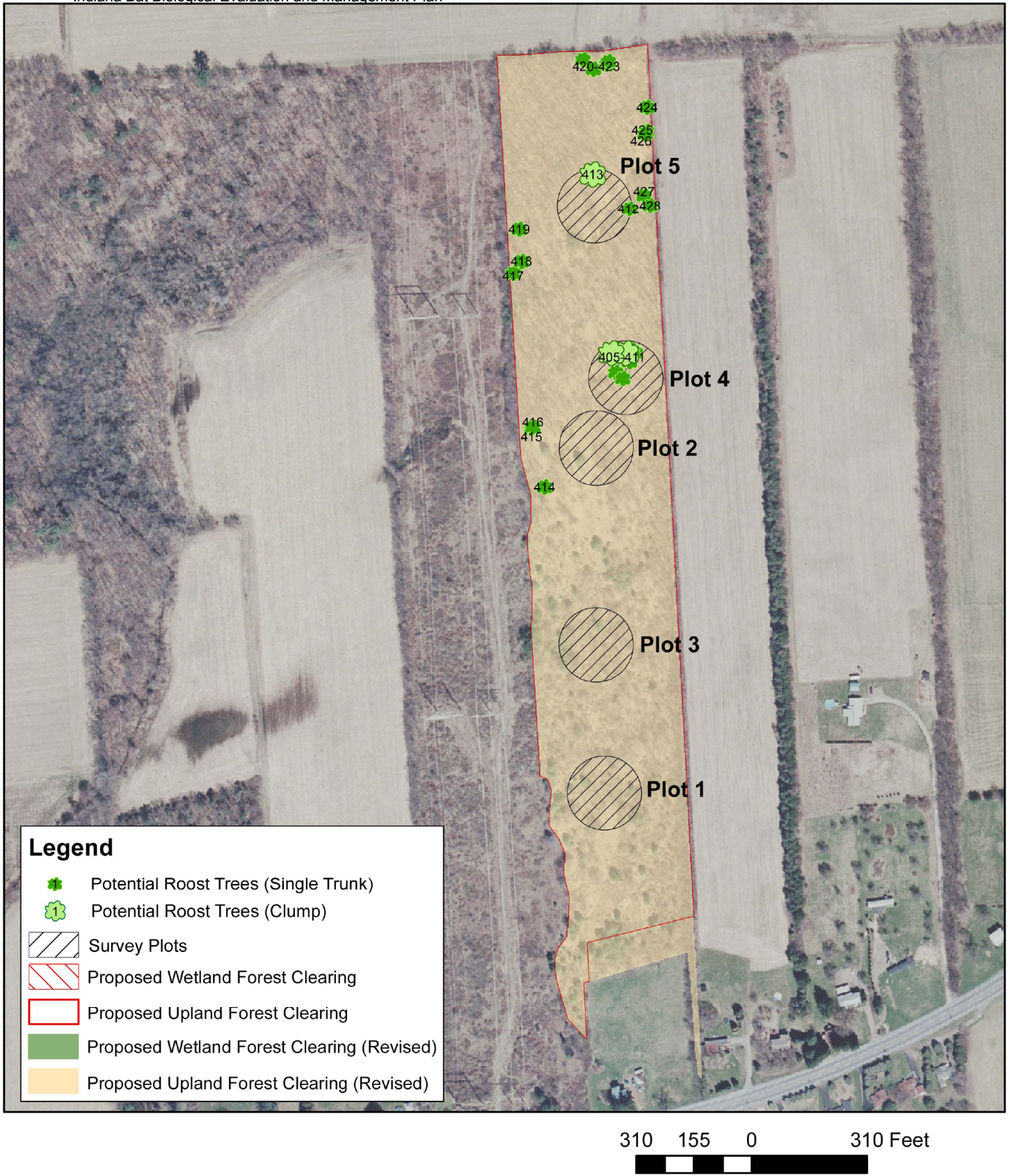


Figure D-11.
BBNPP Forest Area 14
Potential Roost Tree Locations



NORMANDEAU ASSOCIATES
ENVIRONMENTAL CONSULTANTS
 400 Old Reading Pike, Bldg A, Suite 101 Stowe, PA 19464

date: 11/29/10
 prepared by: s.sherman
 project: 22474.000

rev. date: 01/09/11, 09/15/11
 prepared for: c.roche
 file name: Area14_UP_AppendixFig_Rev

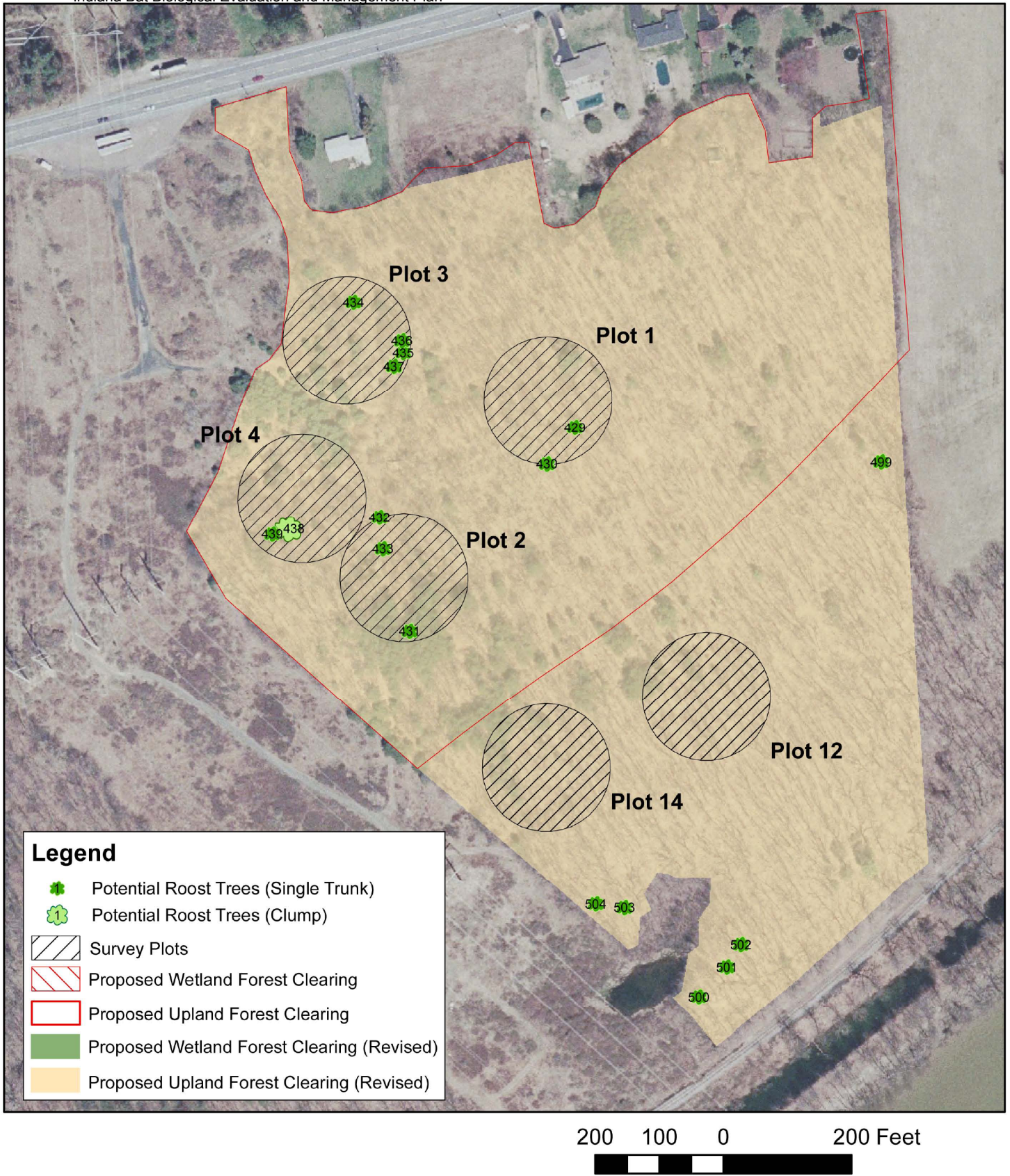


Figure D-12.
BBNPP Forest Area 15
Potential Roost Tree Locations



NORMANDEAU ASSOCIATES
ENVIRONMENTAL CONSULTANTS
 400 Old Reading Pike, Bldg A, Suite 101 Stowe, PA 19464

date: 11/29/10
 prepared by: s.sherman
 project: 22474.000

rev. date: 01/09/11, 09/15/11
 prepared for: c.roche
 file name: Area15_UP_AppendixFig_Rev

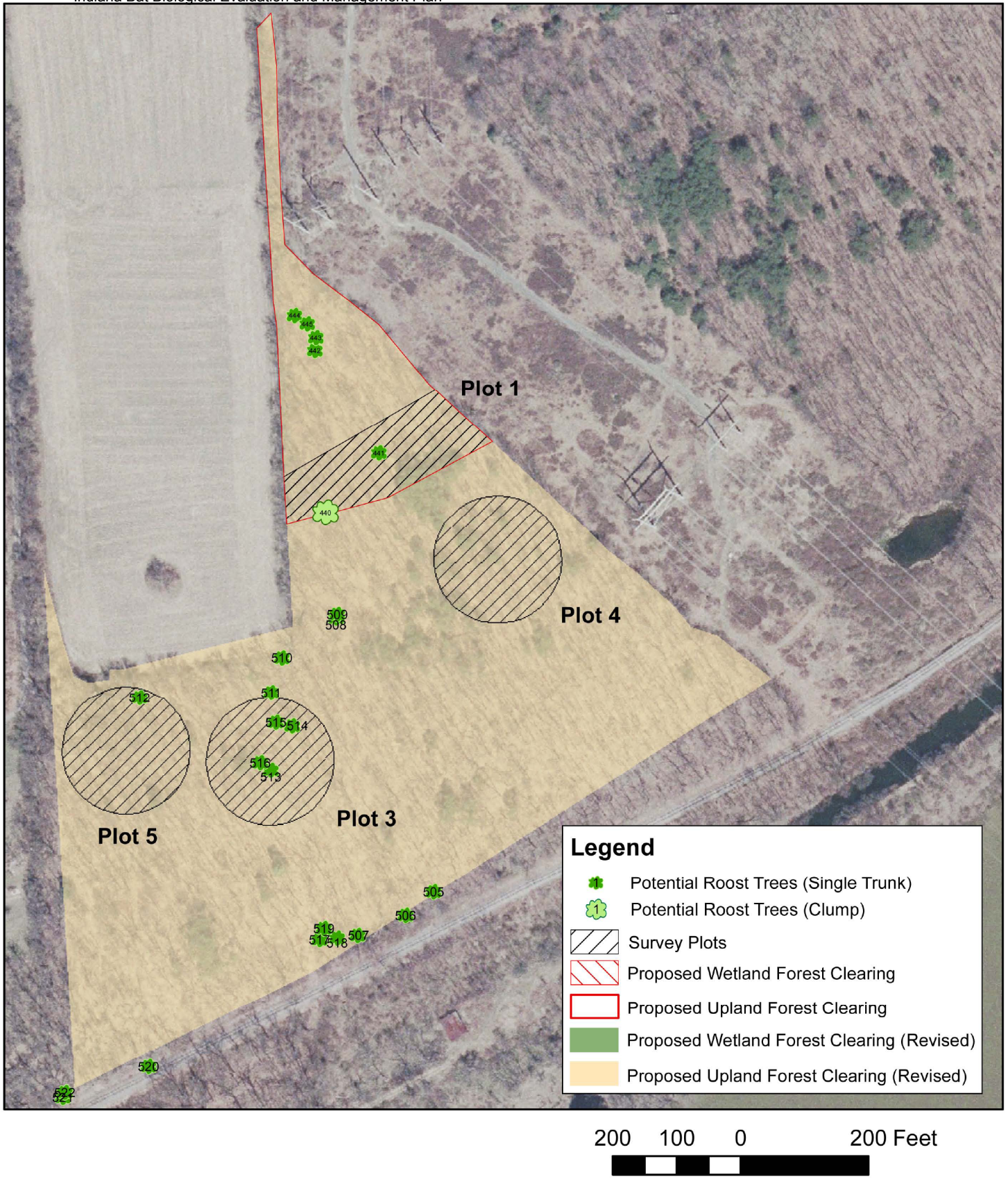


Figure D-13.
BBNPP Forest Area 16
Potential Roost Tree Locations



NORMANDEAU ASSOCIATES
ENVIRONMENTAL CONSULTANTS
400 Old Reading Pike, Bldg A, Suite 101 Stowe, PA 19464

date: 11/29/10
prepared by: s.sherman
project: 22474.000

rev. date: 01/09/11, 09/15/11
prepared for: c. roche
file name: Area16_UP_AppendixFig_Rev