

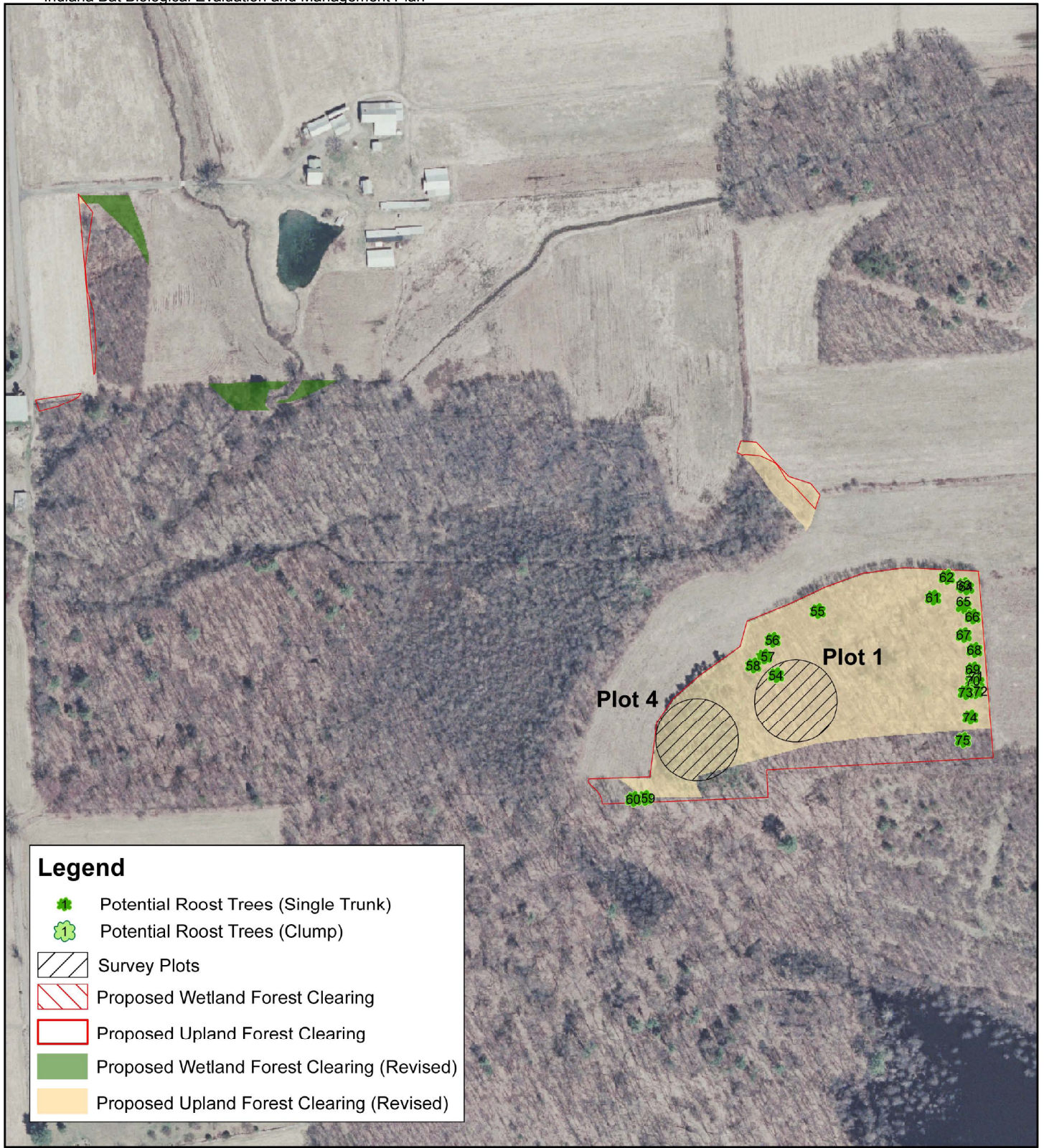
Figure D-2.
BBNPP Forest Area 3
Potential Roost Tree Locations



NORMANDEAU ASSOCIATES
ENVIRONMENTAL CONSULTANTS
400 Old Reading Pike, Bldg A, Suite 101 Stowe, PA 19464

date: 12/13/10
prepared by: s.sherman
project: 22474.000

rev. date: 01/09/11, 09/15/11
prepared for: c. roche
file name: Area3_UP_AppendixFig_Rev



Legend

- Potential Roost Trees (Single Trunk)
- Potential Roost Trees (Clump)
- Survey Plots
- Proposed Wetland Forest Clearing
- Proposed Upland Forest Clearing
- Proposed Wetland Forest Clearing (Revised)
- Proposed Upland Forest Clearing (Revised)

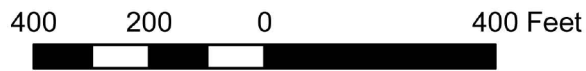



Figure D-3.
BBNPP Forest Area 5
Potential Roost Tree Locations



 **NORMANDEAU ASSOCIATES**
ENVIRONMENTAL CONSULTANTS
 400 Old Reading Pike, Bldg A, Suite 101 Stowe, PA 19464

date: 11/29/10
 prepared by: s.sherman
 project: 22474.000

rev. date: 01/09/11, 09/15/11
 prepared for: c.roche
 file name: Area5_UP_AppendixFig_Rev

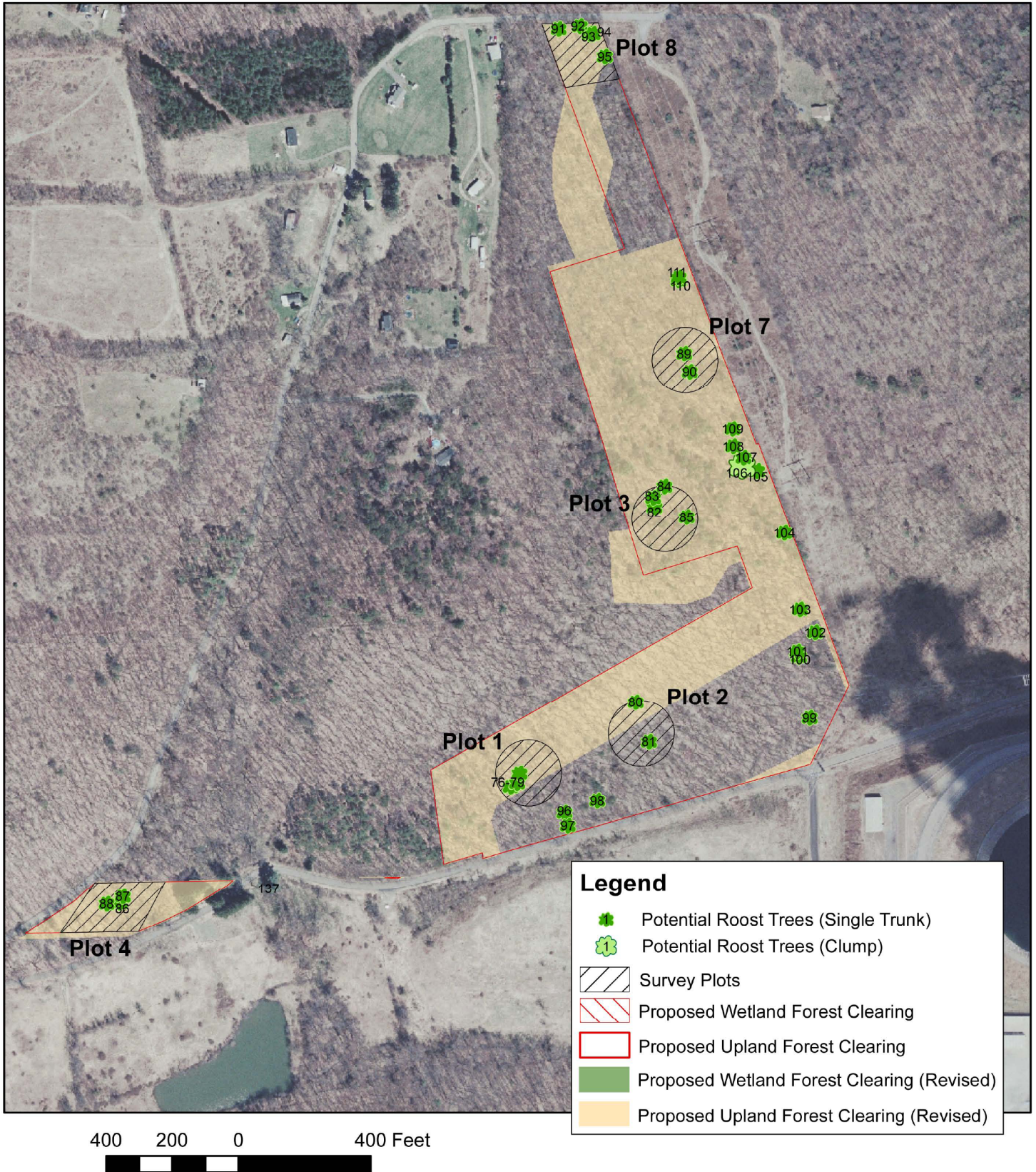


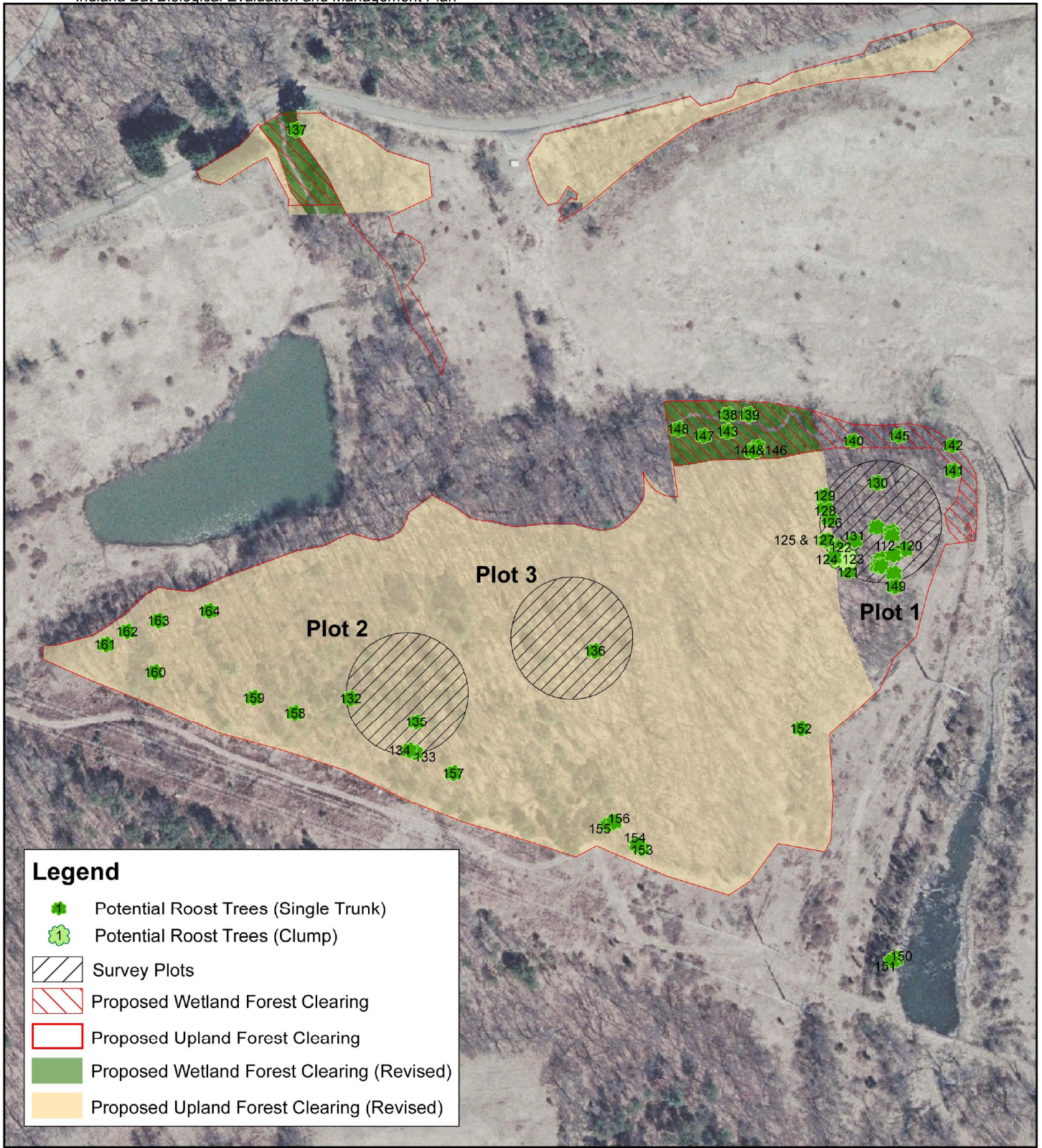
Figure D-4.
BBNPP Forest Area 7
Potential Roost Tree Locations



NORMANDEAU ASSOCIATES
ENVIRONMENTAL CONSULTANTS
400 Old Reading Pike, Bldg A, Suite 101 Stowe, PA 19464

date: 11/29/10
prepared by: s.sherman
project: 22474.000

rev. date: 01/09/11, 09/15/11
prepared for: c. roche
file name: Area7_UP_AppendixFig_Rev



Legend

- Potential Roost Trees (Single Trunk)
- Potential Roost Trees (Clump)
- Survey Plots
- Proposed Wetland Forest Clearing
- Proposed Upland Forest Clearing
- Proposed Wetland Forest Clearing (Revised)
- Proposed Upland Forest Clearing (Revised)

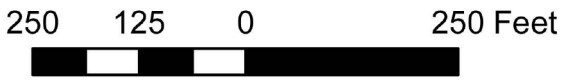


Figure D-5.
BBNPP Forest Area 8
Potential Roost Tree Locations



NORMANDEAU ASSOCIATES
ENVIRONMENTAL CONSULTANTS
 400 Old Reading Pike, Bldg A, Suite 101 Stowe, PA 19464

date: 11/29/10
 prepared by: s.sherman
 project: 22474.000

rev. date: 01/09/11, 09/15/11
 prepared for: c. roche
 file name: Area8_PFOandUP_AppendixFig_Rev