

Abandoned Mine Land Inventory System (AMLIS),
PA DEP Bureau of Abandoned Mine Reclamation, 2012



Figure 7.
BBNPP Site Location Map
with Mine Opening Locations

NORMANDEAU ASSOCIATES
ENVIRONMENTAL CONSULTANTS
400 Old Reading Pike, Bldg A, Suite 101 Stowe, PA 19464

date: 08/15/12	rev. date:
prepared by: s.sherman	prepared for: c. roche
project: 22932.000	file name: Mine_Openings

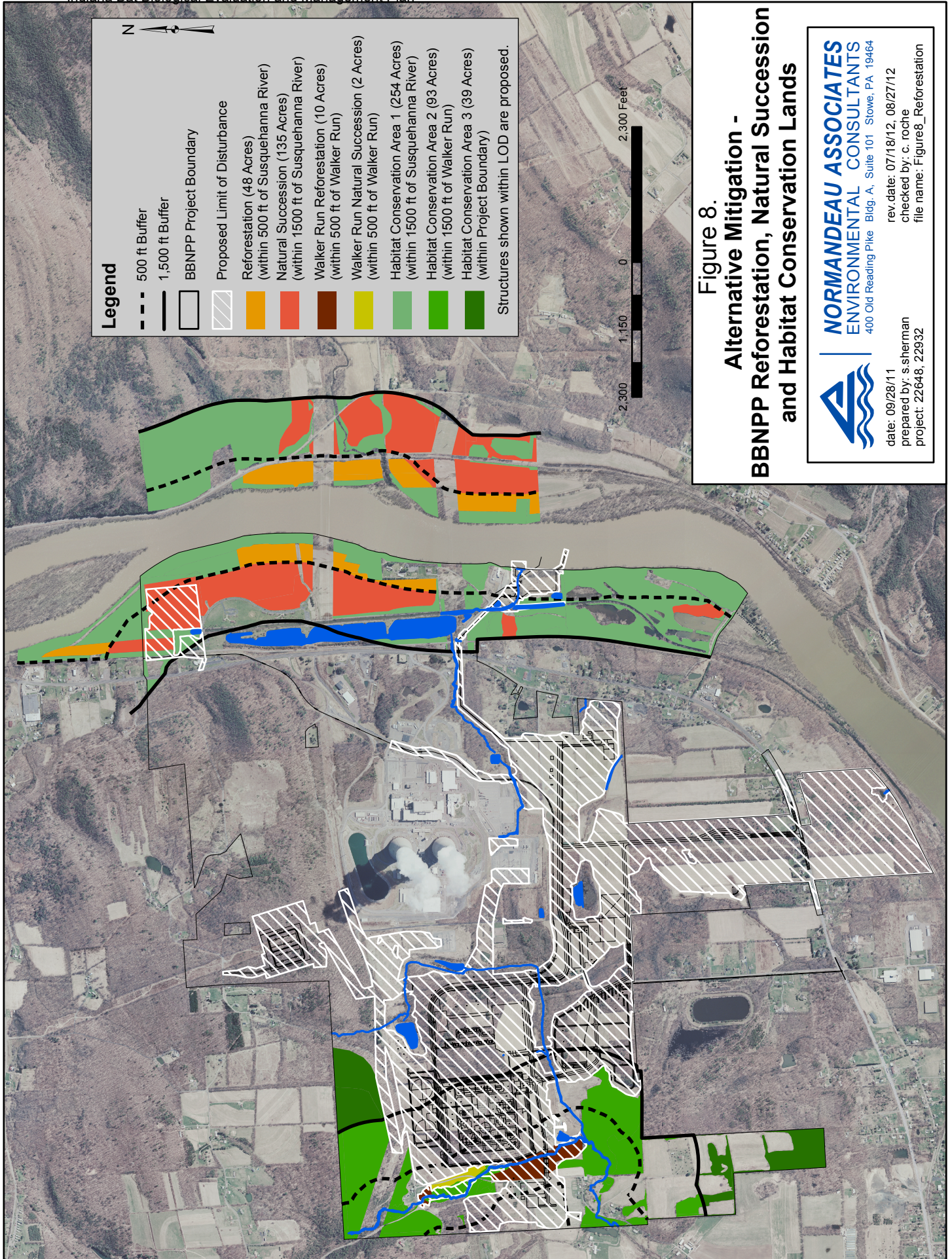


Figure 8.
Alternative Mitigation -
BBNPP Reforestation, Natural Succession
and Habitat Conservation Lands

NORMANDEAU ASSOCIATES
 ENVIRONMENTAL CONSULTANTS
 400 Old Reading Pike Bldg. A, Suite 101 Stowe, PA 19464

date: 09/28/11
 prepared by: s.sherman
 project: 22648, 22932

rev. date: 07/18/12, 08/27/12
 checked by: c. roche
 file name: Figure8_Reforestation