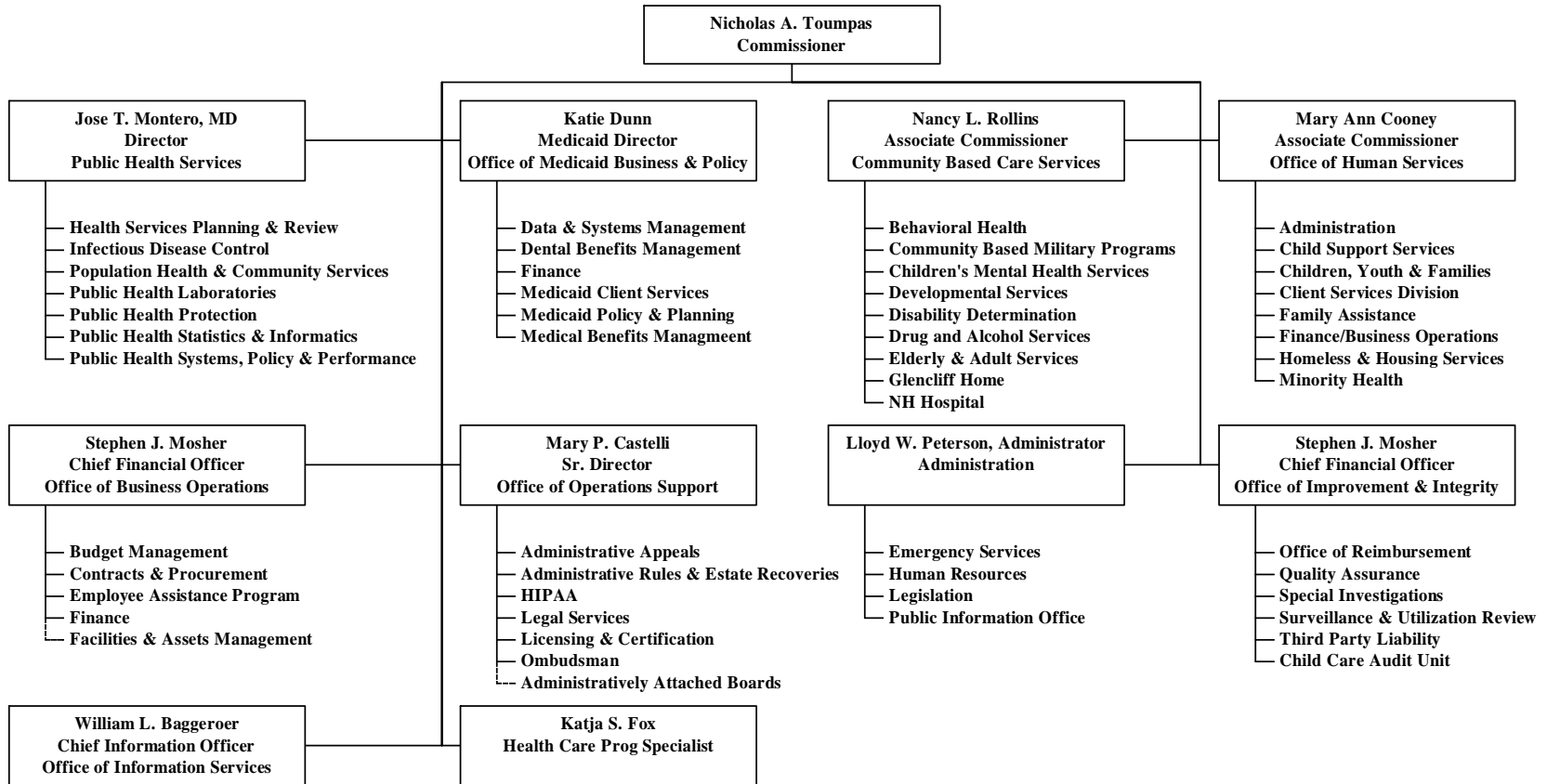


**IMPEP Questionnaire 2012 - ADDENDUM
New Hampshire**

I. Technical Staffing and Training Item 2(a)

Below is the current organization chart. The Commissioner of the Department of Health and Human Services reports to the Governor.



IMPEP Questionnaire 2012 - ADDENDUM
New Hampshire

I. Technical Staffing and Training Item 2(a) (cont'd)



**IMPEP Questionnaire 2012 - ADDENDUM
New Hampshire**

I. Technical Staffing and Training Item 2(b)

**Department of Health and Human Services
Division of Public Health Services
Bureau of Public Health Protection
Radiological Health Section
Current - 09/11/12**

