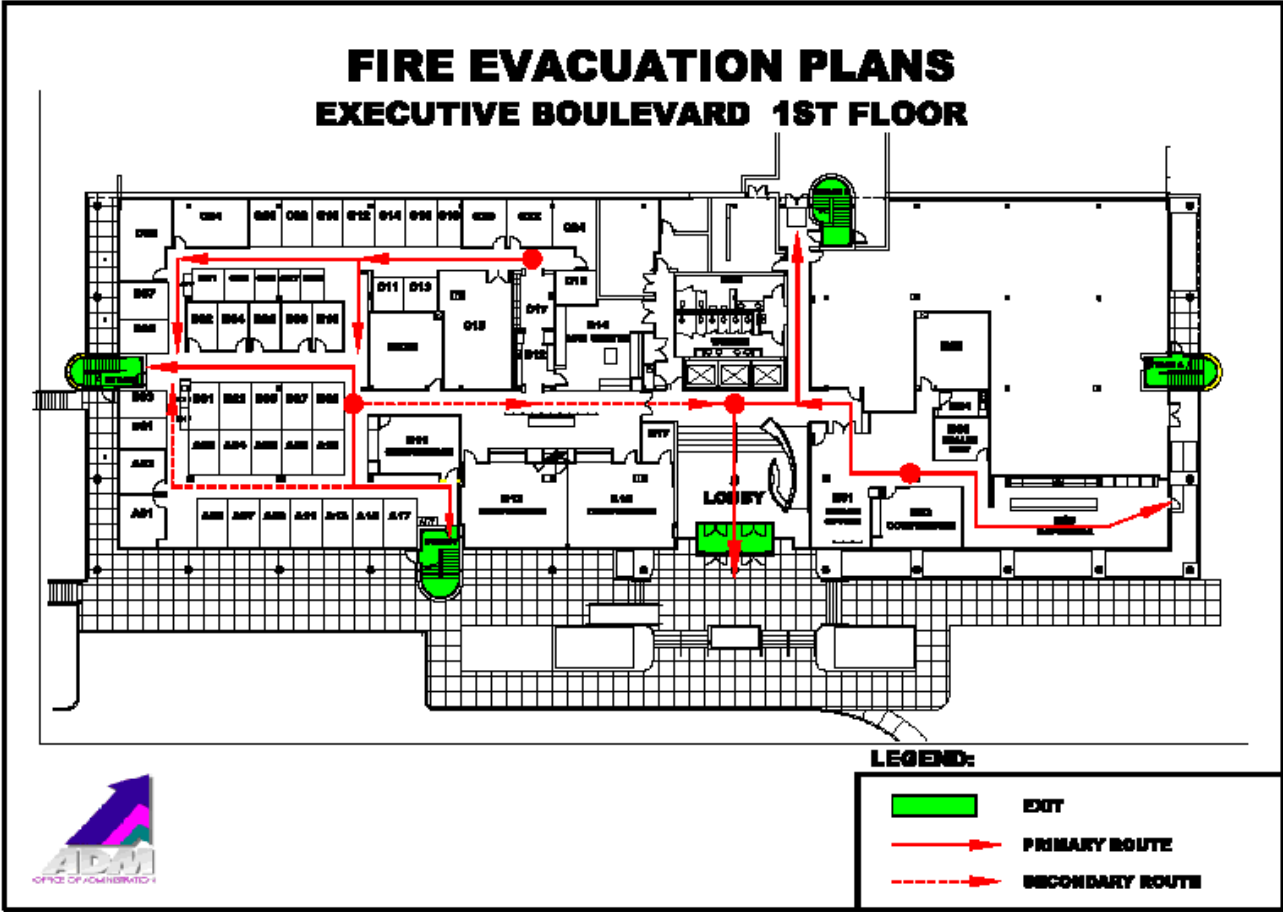


# **10 CFR Part 26 Subpart I Fatigue Management Public Meeting**

**U.S. Nuclear Regulatory Commission Headquarters  
February 23, 2012**

# Welcome to EBB!



# Meeting Objectives

- **To discuss six specific topics of interest to the NRC and stakeholders:**
  - The need for, and safety issues related to, expanding exemptions for work hour controls to include other natural events (i.e. major winter storms, floods, etc.).
  - The need for, and safety issues related to, expanding exemptions for work hour controls to include non-NRC evaluated Force-on-Force exercises.
  - The need for, and safety issues related to, changing the definition of “unit outage” in 10 CFR 26.5.
  - Stakeholder concerns that have been resolved via recent regulatory actions.
  - The process to ensure that the issuance of draft guidance documents coincides with the issuance of the proposed rule.
  - The definition of “QC/QV Personnel”
- **The NRC is seeking stakeholder feedback on the above topics along with proposed short- and long-term solutions.**

# Agenda



- 9:30 – 9:40 Opening Remarks and Introductions
- 9:40 – 10:00 NRC Perspective
- 10:00 – 11:30 Stakeholder Perspectives
- 11:30 – 1:00 Lunch
- 1:00 – 2:15 Open Discussion
- 2:15 – 2:45 Public Interaction
- 2:45 – 3:00 Wrap Up/Adjourn

# NRC Perspective



# We heard stakeholder concerns



- The Part 26 Subpart I rule will incorporate lessons learned from the implementation of the MDO alternative rule
  - Approximately 15 month schedule extension
  - Proposed rule effort complete in Fall 2013
- The NRC will consider stakeholder concerns:
  - Extending work hour exemption to other natural events
  - Extending work hour exemption to non-NRC evaluated Force on Force (FOF) exercises
  - Changing the definition of “unit outage”

# What is the basis for change?

- Extending work hour exceptions to natural events other than hurricanes
  - What types of natural events?
  - Has there been a demonstrated safety impact in the past?
- Extending work hour exceptions to non-NRC evaluated FOF exercises
  - How does the scope & frequency of these exercises compare to NRC evaluated exercises?
  - Can this be accommodated by the long-term training plan?
- Changing definition of “unit outage” to “site outage”
  - NRC understands the benefit to industry
  - How would this change benefit safety?

# Potential Options

- Extending work hour exemption to other natural events
  - When does it start and when does it cease?
- Extending work hour exemption to non-NRC evaluated FOF exercises
  - What events would be included?
- Changing definition of “unit outage” to “site outage”



# Guidance Development

- This rule will account for the Cumulative Effects of Regulation (CER)
  - SRM-SECY-11-0032
    - Draft guidance will be issued with proposed rule
    - Final guidance will be issued with final rule
- The NRC is seeking stakeholder feedback on the best way to issue guidance consistent with CER direction from the Commission

# QC/QV Personnel Definition



- The staff continues to develop this definition based on Commission direction
- Stakeholder input will be critical to success

# Questions, Comments, Concerns