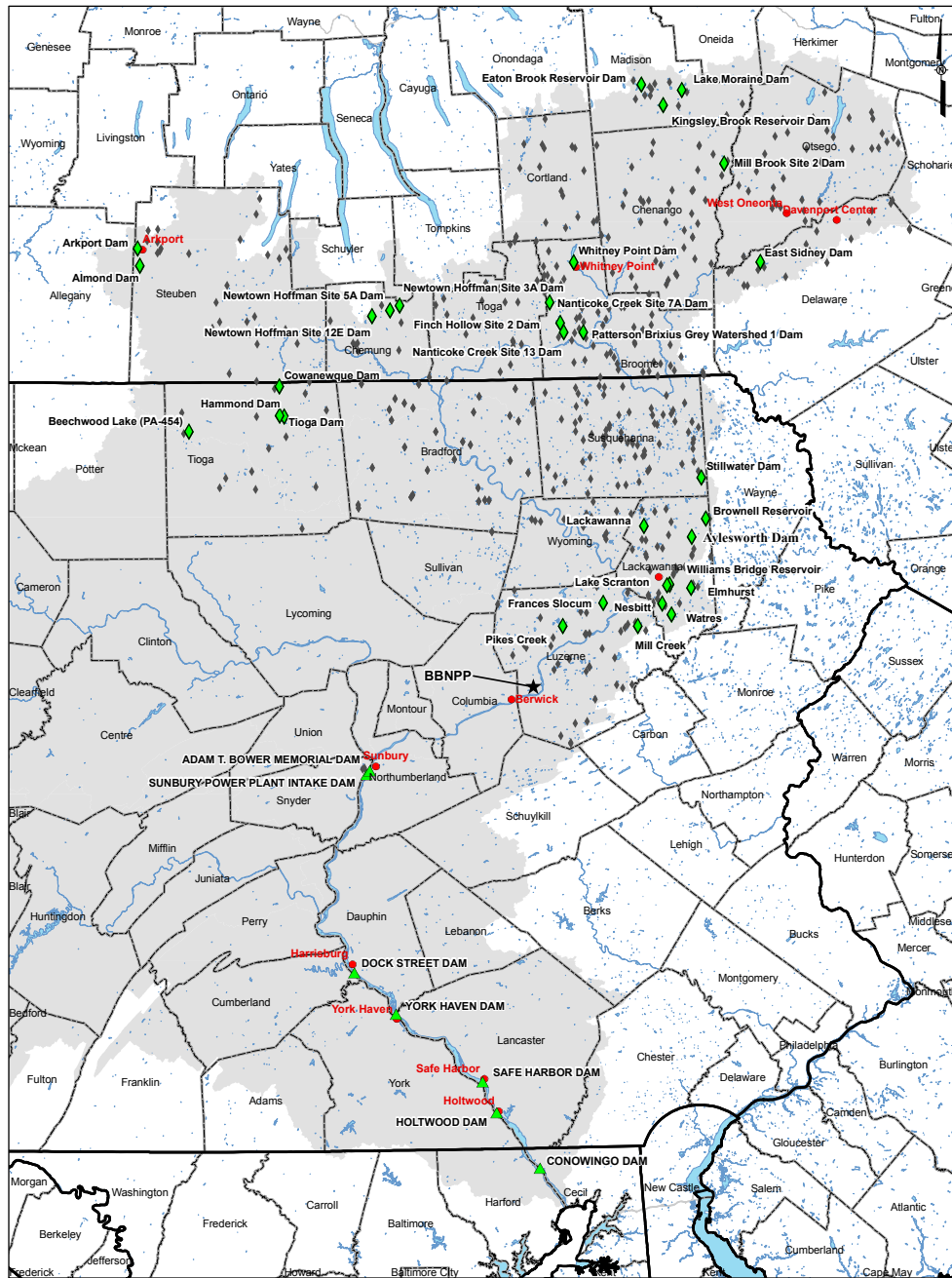
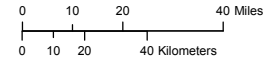


Figure 2.3-16— Dams within the Susquehanna River Basin



LEGEND

- ★ Center Point of Proposed Bell Bend NPP (BBNPP)
- ◆ Selected Upstream Dams
- ▲ Selected Downstream Dams
- ♦ NID Dams
- City
- Waterbody
- County Boundary
- State Boundary
- Susquehanna River Basin Boundary



REFERENCES:
 ESRI StreetMap Pro [CD-ROM], 2007. Waterbody.
 Susquehanna River Basin Commission, 2006. Sus. R. Basin Boundary.
 National Inventory of Dams (NID).
<http://crunch.tec.army.mil/nid/public/webpages/nid.cfm>, February 2008.
 PASDA, Run of the River Dams.
http://www.pasda.psu.edu/data/pafish/Dams_RunofRiver.zip

10-4310-GIS-B074

Figure 2.3-17— Physiographic Provinces of Pennsylvania

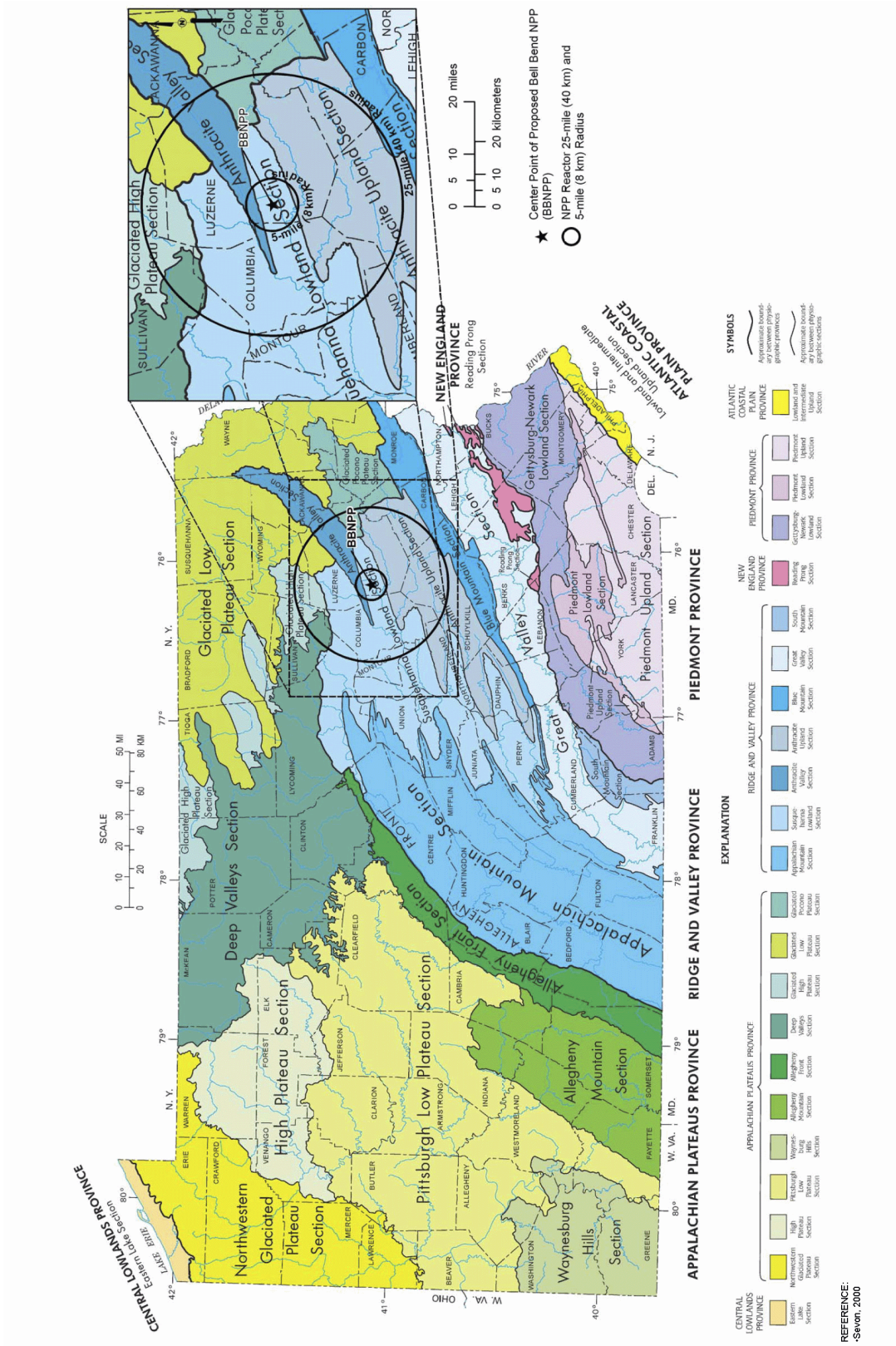


Figure 2.3-18— Glacial Deposits of Pennsylvania

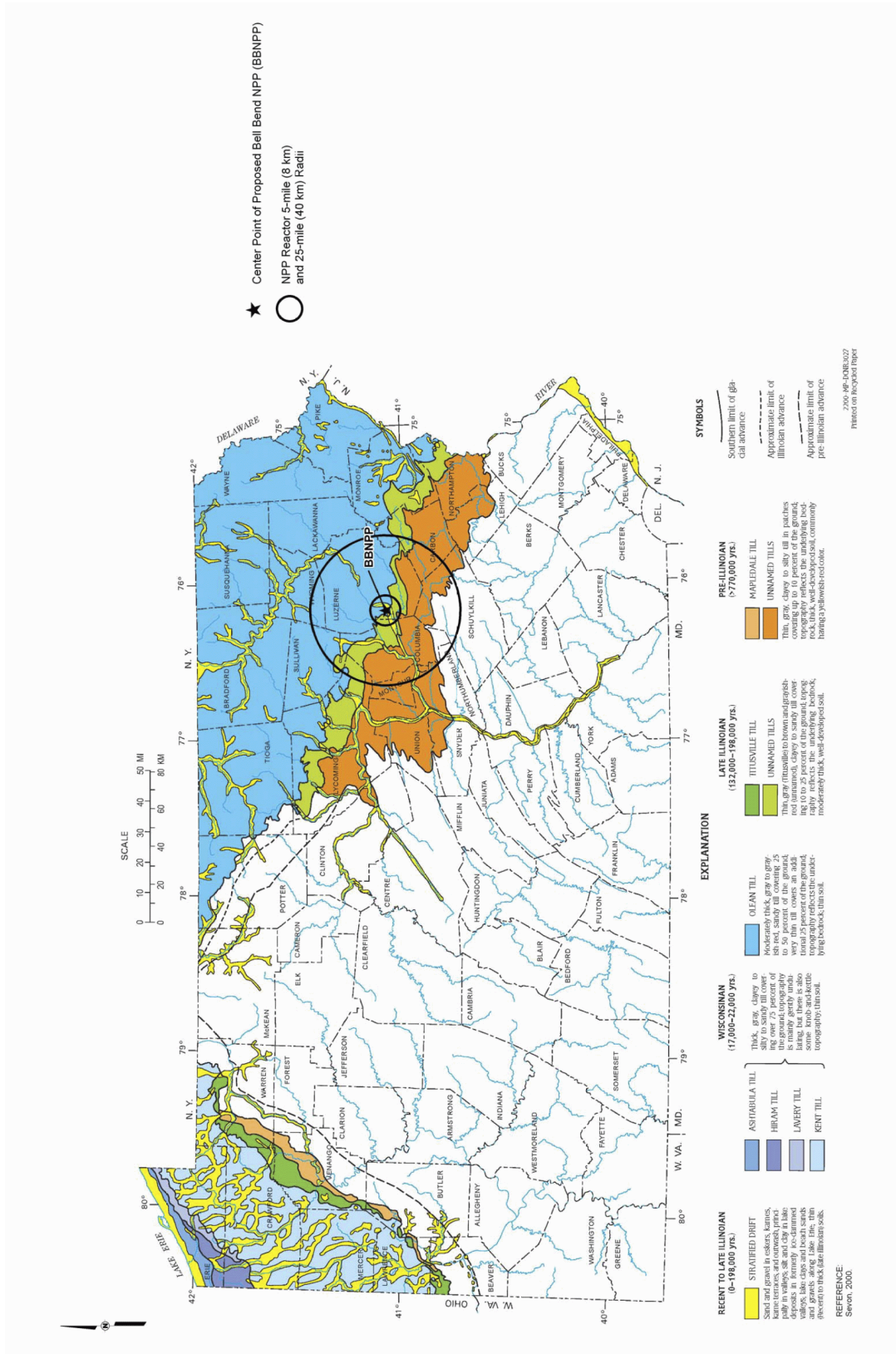
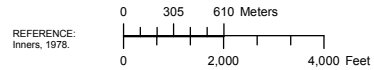


Figure 2.3-19— Geologic Map of the BBNPP Site and Vicinity



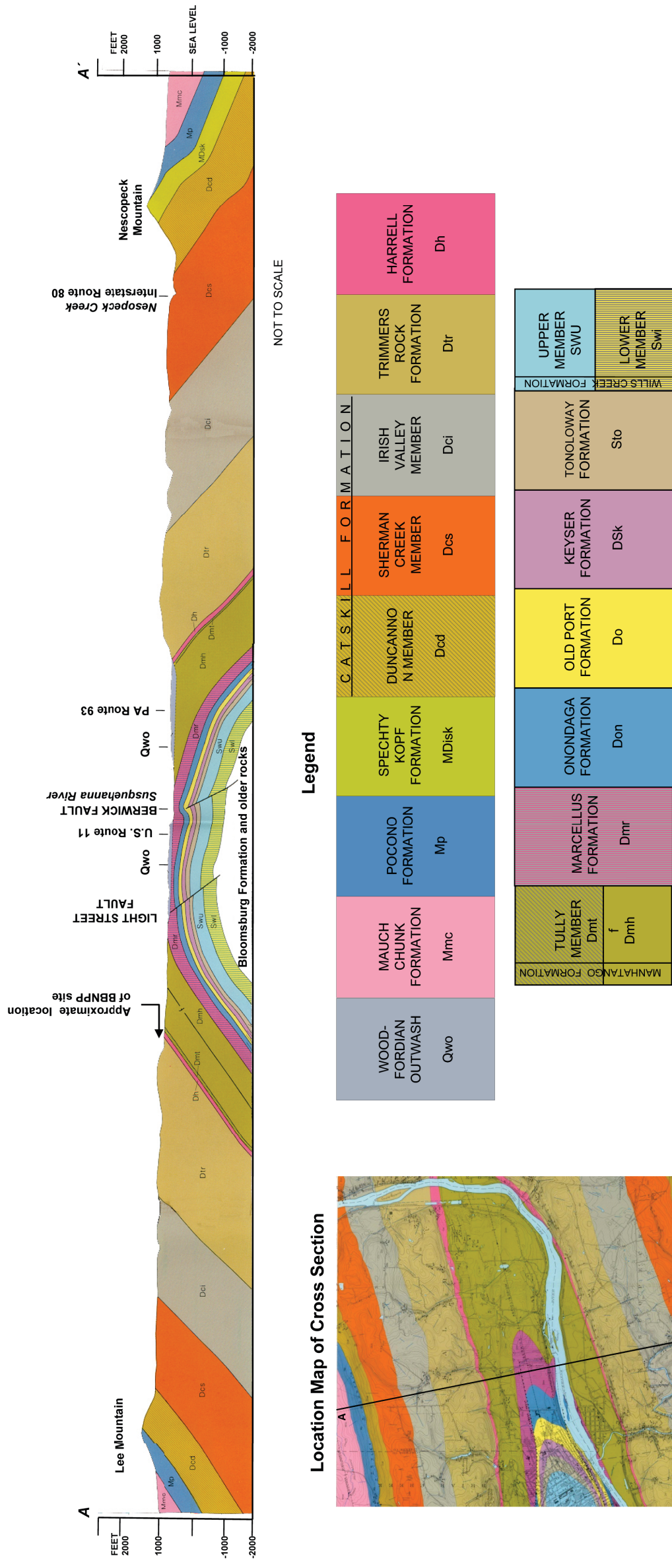
LEGEND:
 ★ Proposed Center Point of Bell Bend NPP

Additional legend information for this figure is presented in Figure 2.3-20.



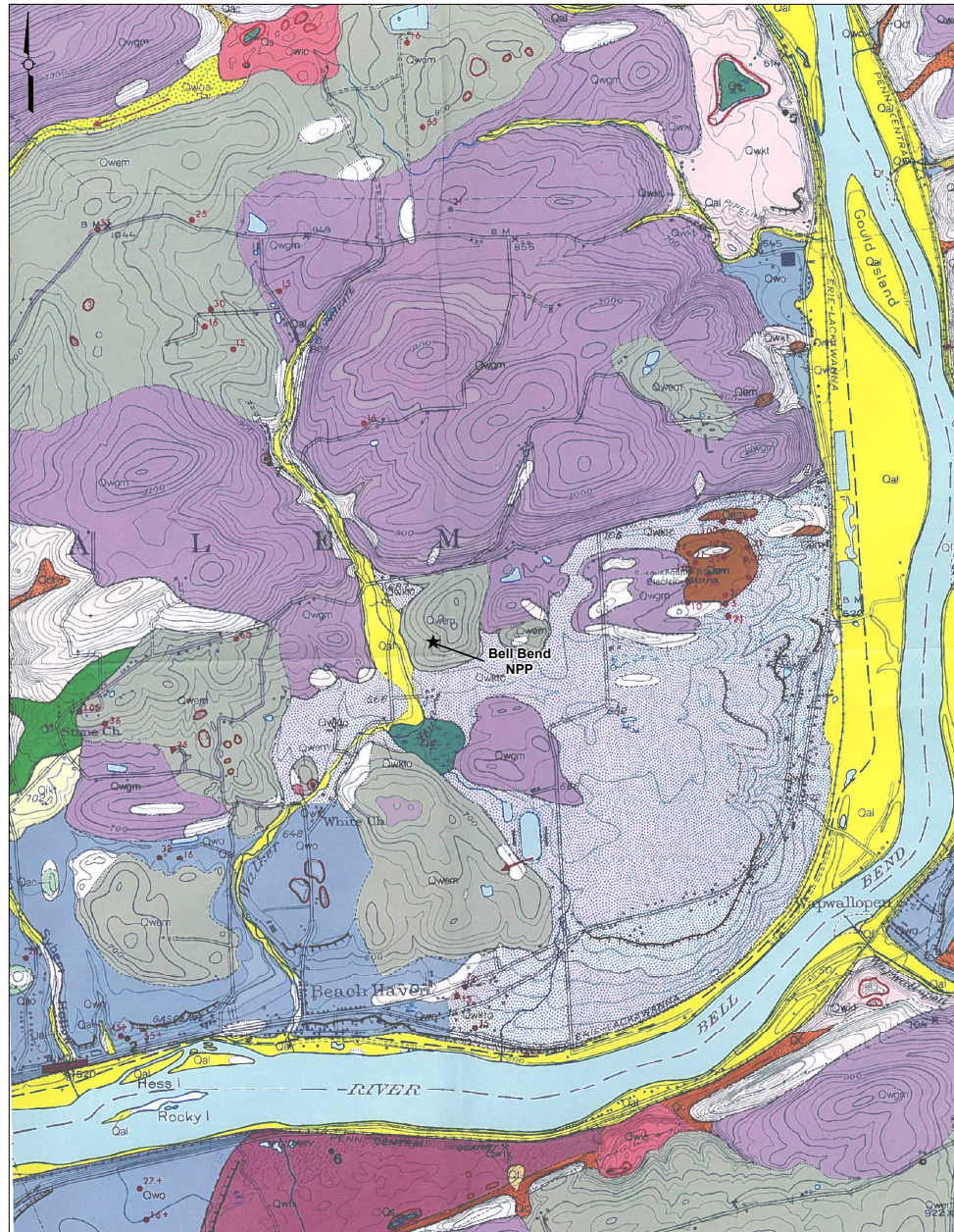
10-4310-GIS-B075

Figure 2.3-20— Stratigraphy and Geologic Cross Section of the Berwick Anticlinorium



10-4310-GIS-B076

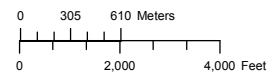
Figure 2.3-21— Surficial Deposits at BBNPP Site and Vicinity



LEGEND:
 ★ Proposed Center Point of Bell Bend NPP

Additional legend information for this figure is presented in Figure 2.3-22.

REFERENCE:
 Inners, 1978.



10-4310-GIS-B077

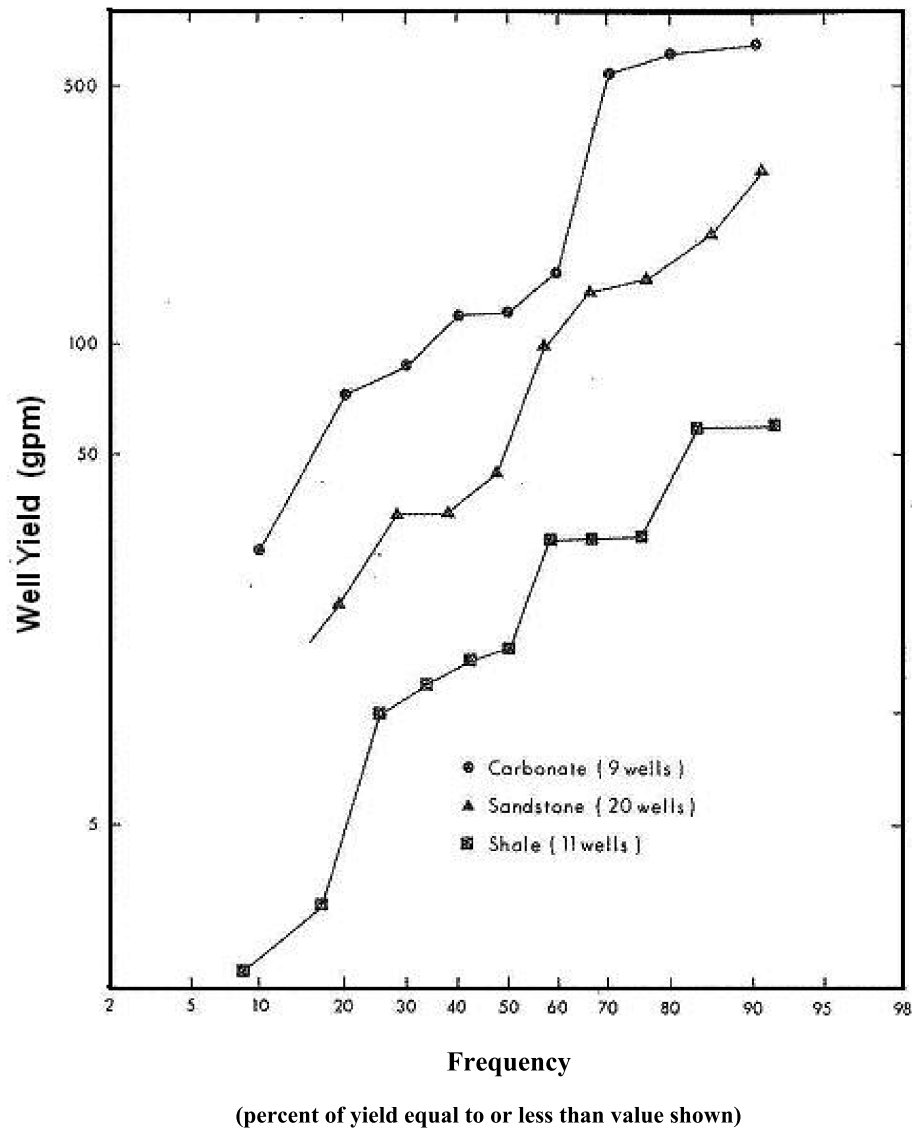
Figure 2.3-22— Legend of Surficial Deposits



Note: Refer to previous figure for Surficial Geologic Map of Berwick Quadrangle

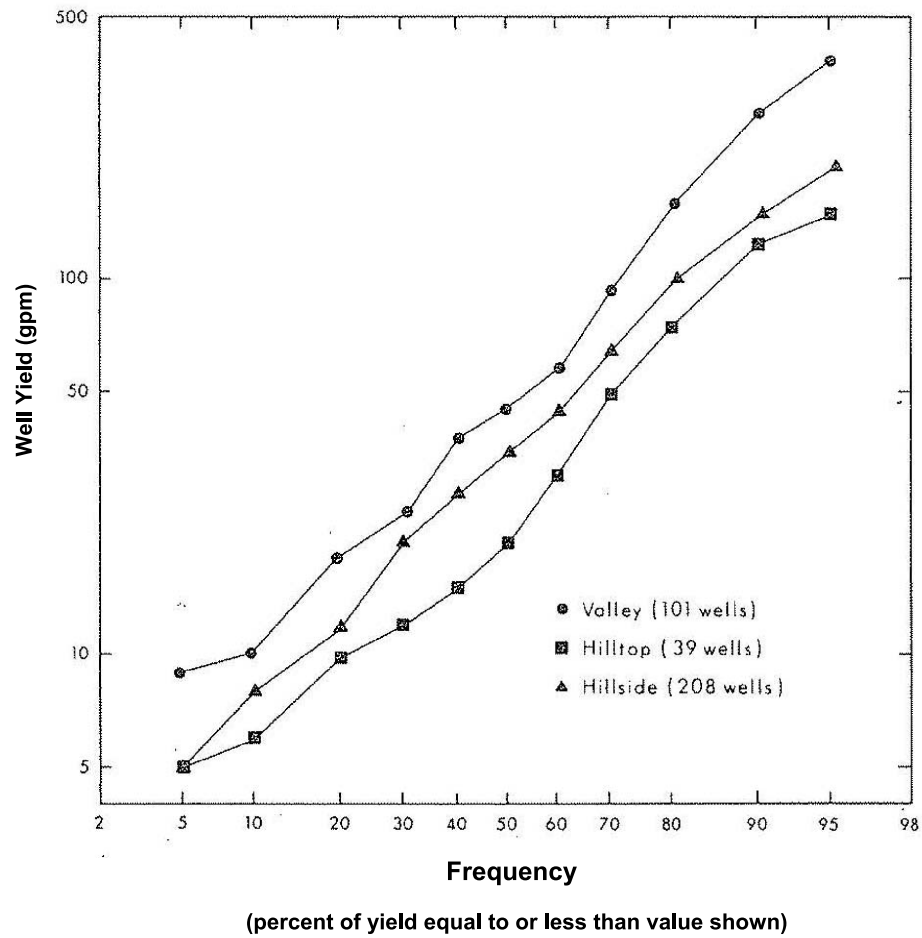
REFERENCE:
Inners, 1978

Figure 2.3-23— Frequency Distribution of Nondomestic Well Yields Grouped According to Dominant Rock Type



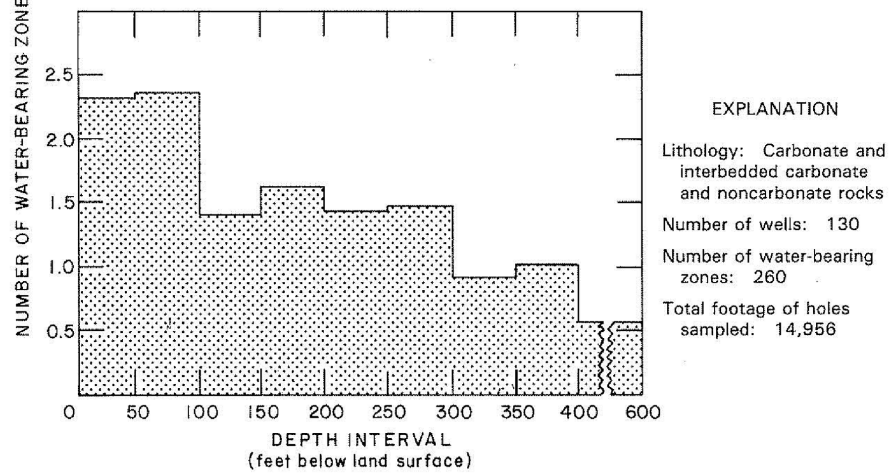
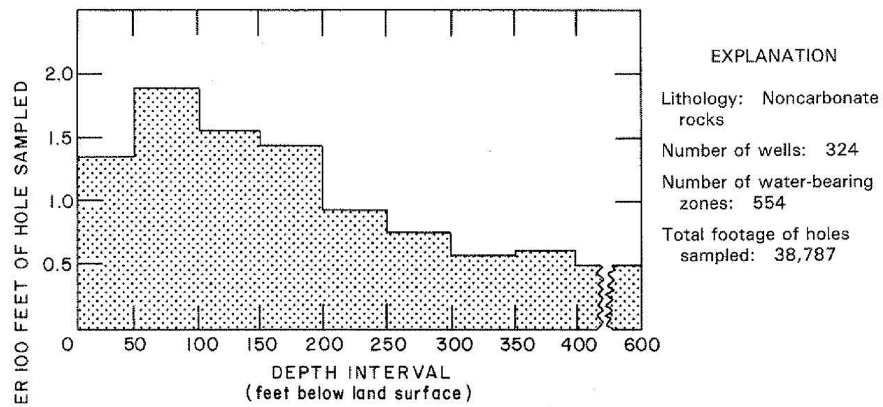
Reference: Taylor, 1984

Figure 2.3-24— Frequency Distribution of Nondomestic Well Yields Grouped According to Topographic Setting



Reference: Taylor, 1984

Figure 2.3-25— Distribution of Water-Bearing Zones With Depth



Reference: Williams, 1987