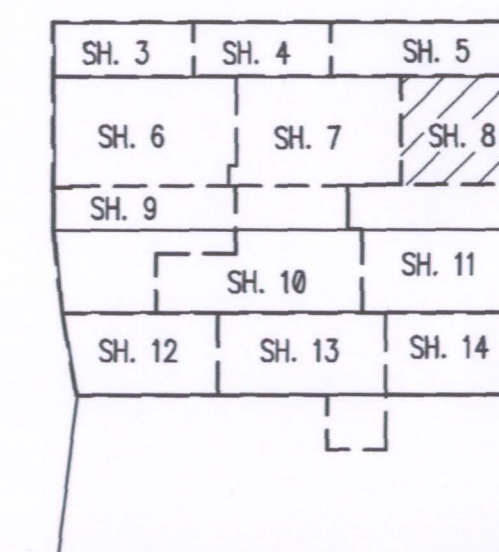
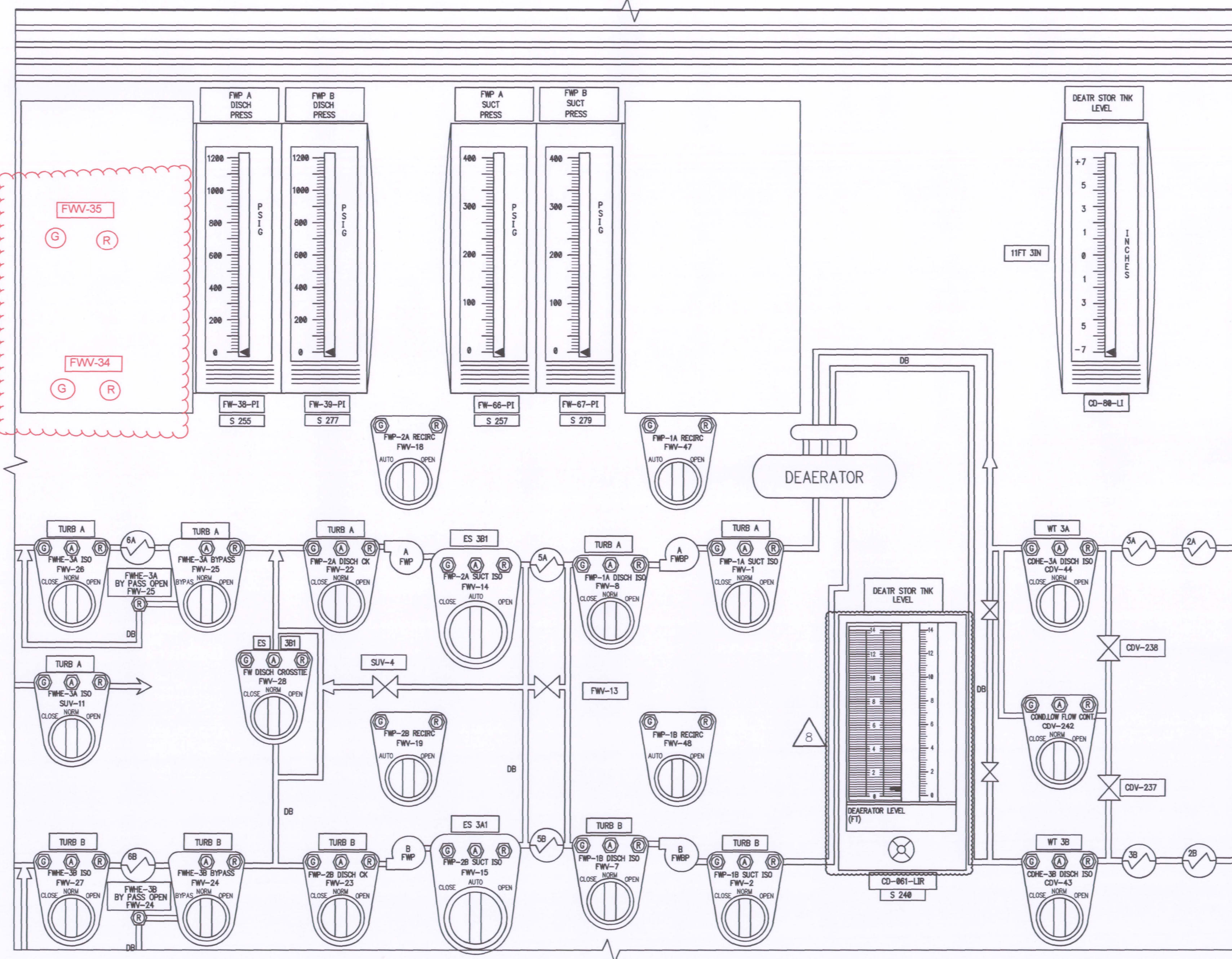


Relocation of FWW-34 and FWW-35 indicators.



KEY PLAN

NO.	DESCRIPTION	DATE
REVISIONS		
PROGRESS ENERGY CORPORATION CRYSTAL RIVER, FLORIDA CRYSTAL RIVER PLANT 855,000 KW UNIT NO. 3		
ELECTRICAL		ICS
MAIN CONTROL BOARD INTEG. CONT. SYSTEM ASSY.		
READING PERM.	DRAFTING	APPROVED
MADE	CHECKED	APP
DATE	SCALE	SIZE
	3/4	5500
	D-201-141	8
	E-201-141	10

SH. 8	CONSTRUCTION	
	LIMITED CONSTRUCTION AS NOTED	
	PRELIMINARY NOT FOR CONSTRUCTION	
	BIDDING PURPOSES ONLY	
	RELEASED FOR	

D-07