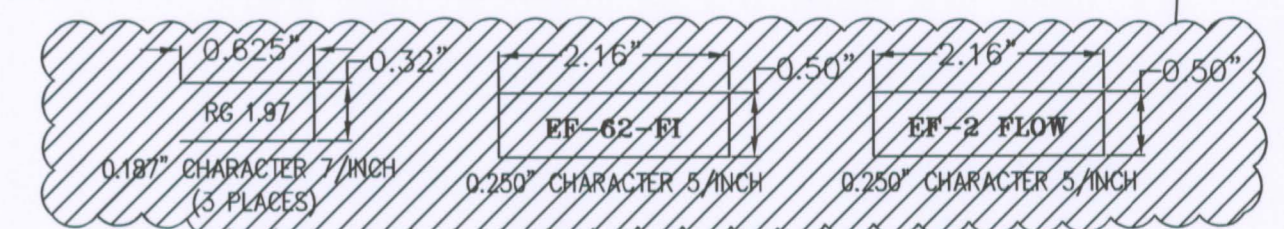
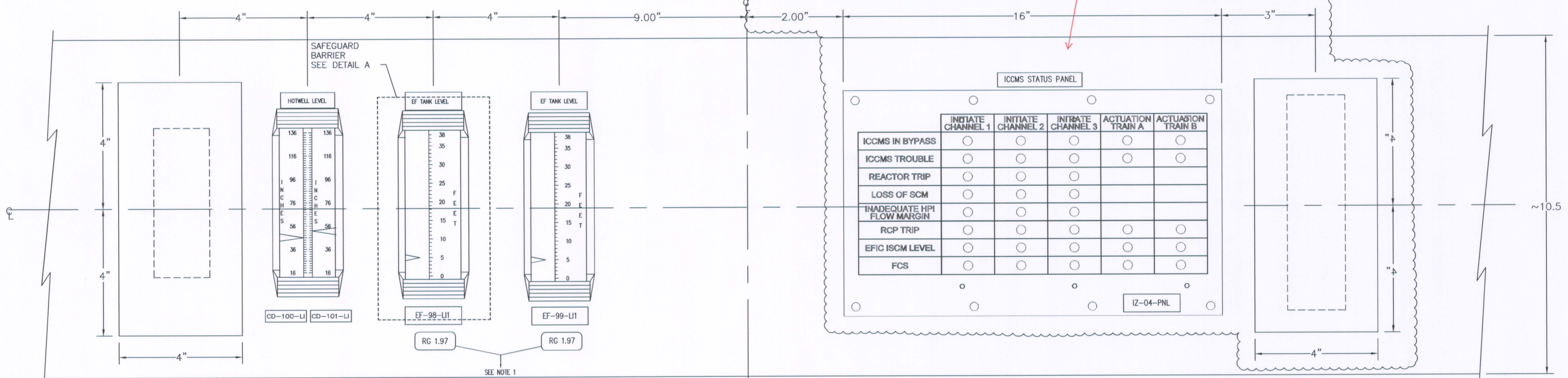
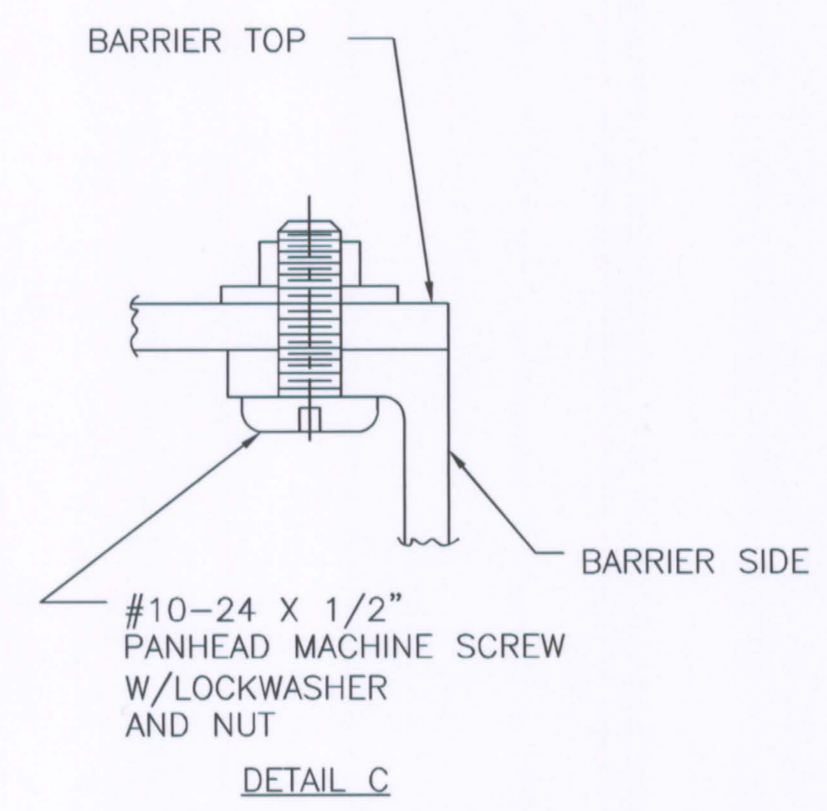
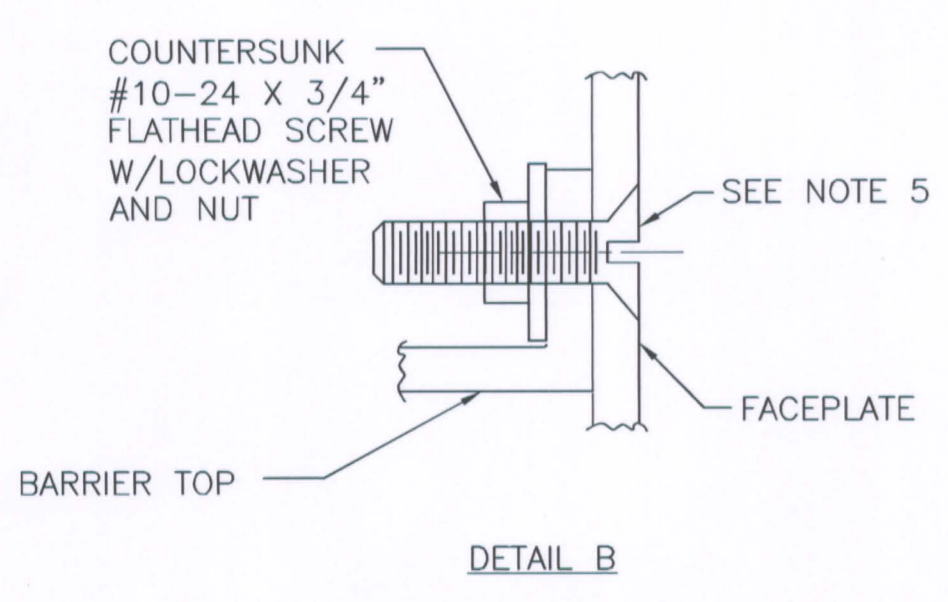
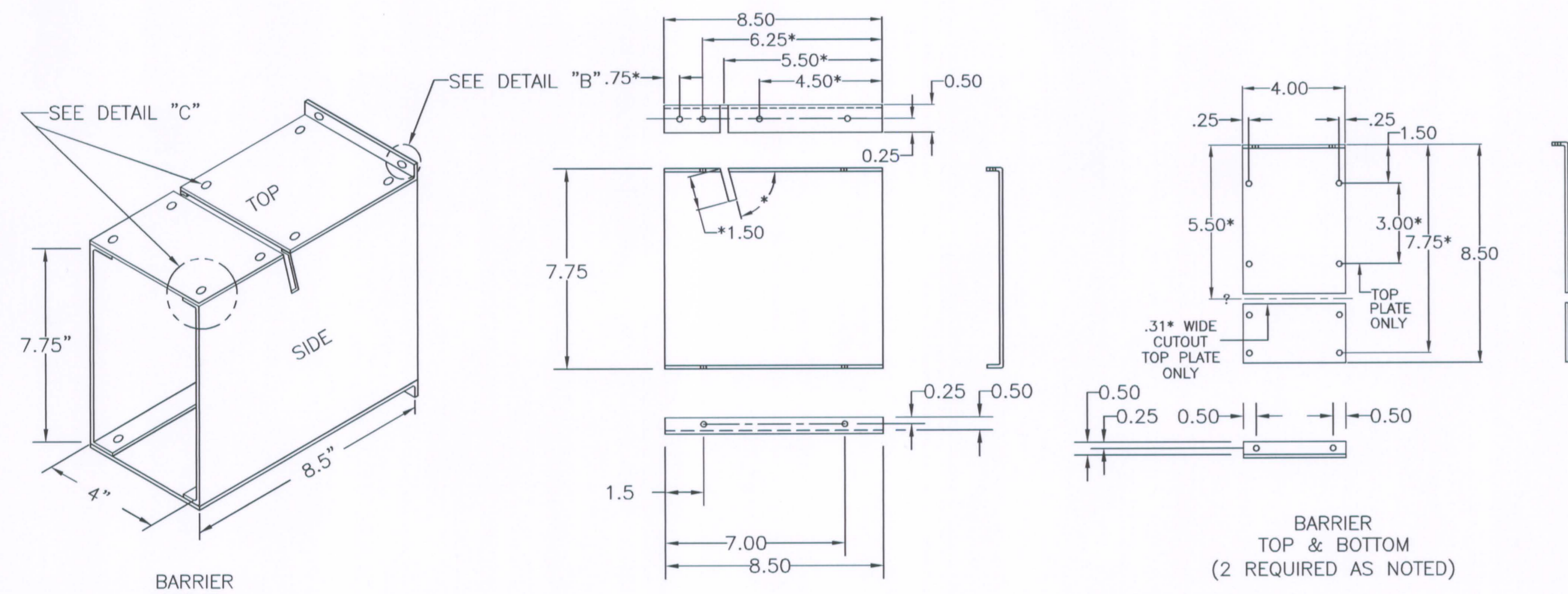


1 2 3 4 5 6 7 8 9 10

A  
B  
C  
D  
E  
F  
G  
H



- NOTES:
- R.G. 1.97 LABEL IS ORANGE WITH BLACK LETTERS SIGNIFYING R.G. 1.97 CATEGORY 1 INSTRUMENTS. EF-98/99 LABELS ARE BLACK LETTERS ON WHITE BACKGROUND.
  - FOR GENERAL AND FABRICATION NOTES SEE DWG S-502-114.
  - FOR INTERNAL WIRING SEE DWG. 210-853.
  - FOR CUTOUT AND COVER PLATE DETAILS SEE DWG. S-502-114.
  - THE CUTOUT DETAILS FOR THE 8 CUTOUTS ARE SHOWN ON DWG. S-502-114 DETAIL "C". THREE CUTOUTS ARE BEING USED AS X-3A CUTOUTS AND ONE CUTOUT IS BEING USED AS AN X-145 CUTOUT.
  - DIMENSIONS ARE IN INCHES.
  - COVER PLATE CUTOUT LEGEND:
- (X-3A) - INTERNATIONAL INSTRUMENT TYPE 1151/1251, SEE DWG 201-130 (SEE NOTE 5).  
 (X-145) - DIXON METER MODELS SA101P, SA202P, BB101P & BB202P SEE DWG 201-325 (SEE NOTE 5).



1 AS BUILT PER MAR 98-03-01-05, FCN's 6 & 11		TDF			
NO.	DESCRIPTION	DRAWN	CHKD	APPR.	DATE
REVISIONS					
FLORIDA POWER CORPORATION ST. PETERSBURG, FLORIDA CRYSTAL RIVER PLANT					
UNIT NO.3		855,000 KW			
ELECTRICAL MAIN CONTROL BOARD PRIMARY & SECONDARY AUXILIARIES SECTION ABOVE ANNUNCIATORS					
REDRAWN ON CAD SYSTEM		DRAWN BY: JEG		DATE: 03-09-85	
CHECKED BY:		APPROVED BY:		DATE:	
BAYMONT ENGINEERING COMPANY		NONE		E-201-426 1	
SCALE		DRAWING NUMBER		REV.	

1 2 3 4 5 6 7 8 9 10

D-04