

- NOTES:**
1. ALL EQUIPMENT NUMBERS ON THIS DRAWING ARE PREFIXED BY NSP66, UNLESS OTHERWISE NOTED.
  2. ALL INSTRUMENT NUMBERS ON THIS DRAWING ARE PREFIXED BY SP66, UNLESS OTHERWISE NOTED.
  3. THIS P & I IS NOT "O" LISTED. "O" IDENTIFICATION IS FOR MINOR AREAS ONLY AS SHOWN.
  4. THE LAWN SPRINKLER SYSTEM WILL BE SERVED BY REMOVABLE HOSES CONNECTED TO THE WALL HYDRANTS IN THE ADMINISTRATION BLDG. COLD WATER DIST. HDR.
  5. WATER HAMMER ARRESTORS SHALL BE INSTALLED AND SIZED IN ACCORDANCE WITH USAS A112.26.1 OR PD1-WH20L.
  6. FOR LEGEND SEE DWG. NO. M0034A.
  7. EACH EMERGENCY DECONTAMINATION STATION SHALL BE PROVIDED WITH A PRESSURE REGULATING STATION. INSTALLATION OF PRESSURE REGULATORS SHALL BE AS SHOWN IN DETAIL "C".
  8. CONTROL BUILDING REQUIRES PIPING TO ONE EDS-3, ONE SHOWER, HAWS MODEL 8123-VG, AND FIVE SPRAY NOZZLES, HAWS MODEL 1430-016.
  9. THE RETURN LINE TAKE-OFF SHALL BE LOCATED DOWNSTREAM OF AND AS CLOSE TO THE FIXTURES AT FLOOR LEVEL 166'-0" AS PRACTICAL.
  10. FIELD TO PROCURE A 1" RING BALL VALVE. INBCO FIG. NO. S-580B.
  11. DELETED.
  12. DELETED.
  13. THE PIPE PLUG MAY BE REMOVED AND HOSE CONNECTIONS PERMANENTLY INSTALLED AT THE FOLLOWING VALVE LOCATIONS TO ALLOW FOR ACCESS TO DOMESTIC WATER. CONTACT RADWASTE CONTROL ROOM/COORDINATOR FOR PERMISSION PRIOR TO USAGE.

F166	F173	F186	F207	F213
F167	F181	F187	F208	F232
F168	F183	F197	F218	
F169	F184	F204	F211	
F171	F185	F205	F212	

**COMPONENTS SUBJECT TO AMR**

- CONTAINMENT PENETRATIONS AMM07
- NON-SAFETY RELATED SYSTEMS & COMPONENTS AFFECTING SAFETY RELATED SYSTEMS AMM20

048	AS-BUILT PER EC 24038	WE	N/A	N/A	SP	BH	B-20	-10
47	AS-BUILT PER DRN 06-709	WE	SIGN-OFF	ON	RECORD			
NO.	REVISIONS	REV.	BY	CHK	DATE			

GRAND GULF NUCLEAR STATION  
 UNIT 1  
 NUCLEAR PLANT ENGINEERING  
**UPDATED FINAL SAFETY ANALYSIS REPORT**  
 FIGURE NUMBER - 9.2-014  
 P & I DIAGRAM  
 DOMESTIC WATER SYSTEM UNIT 1

SCALE: NONE DRAWING No. M-0034B REV. 048

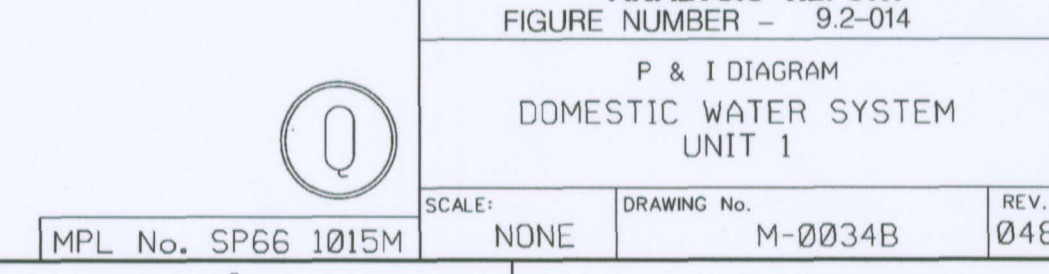
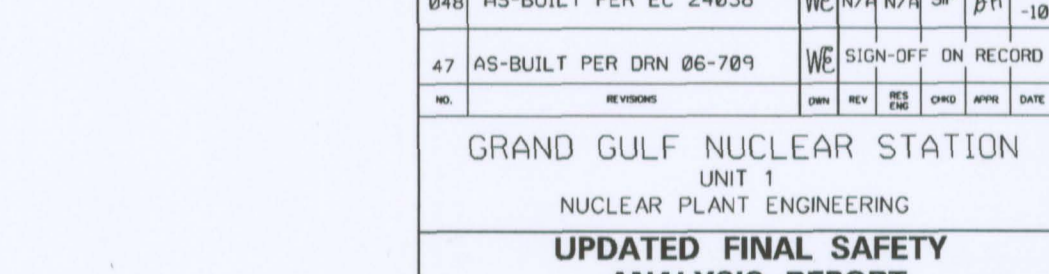
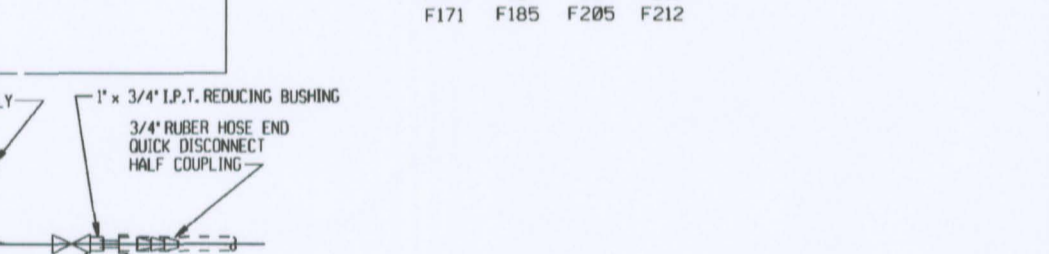
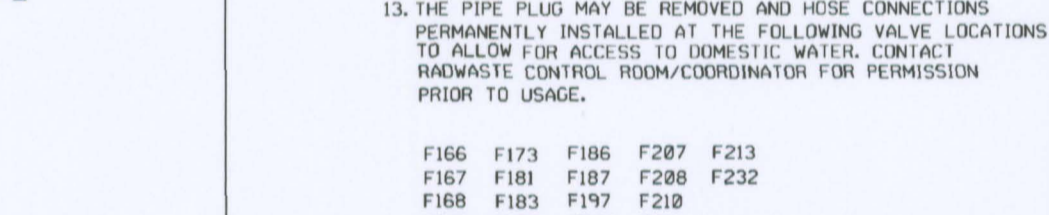
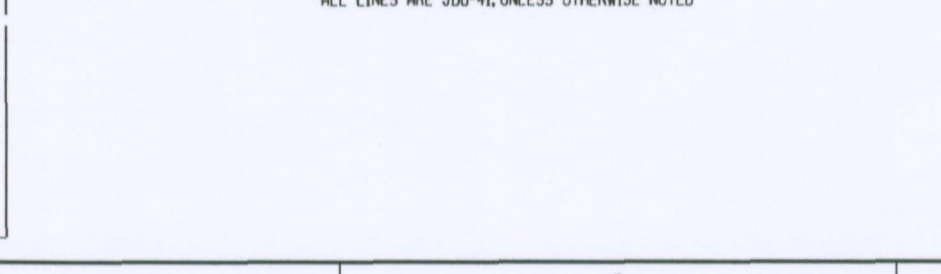
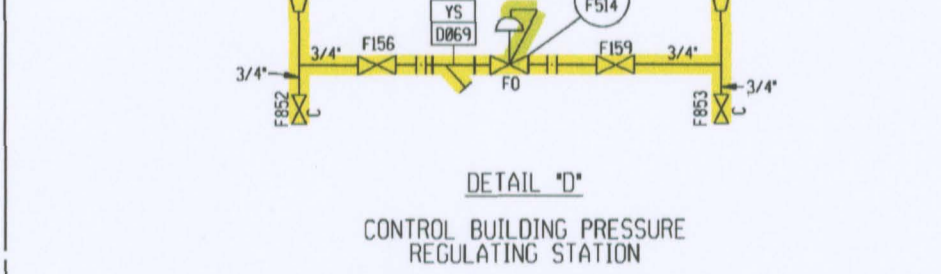
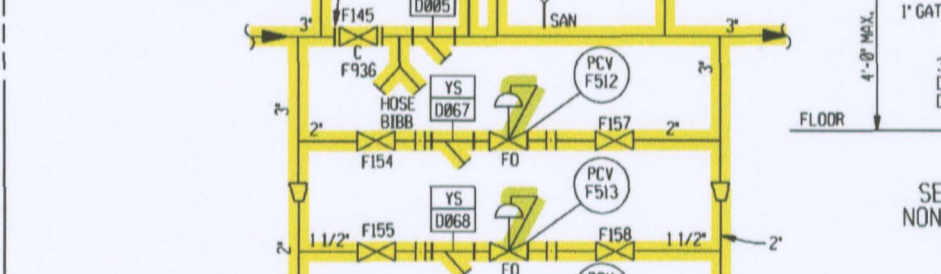
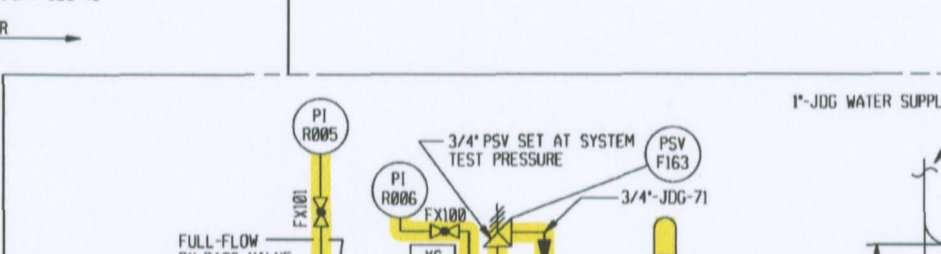
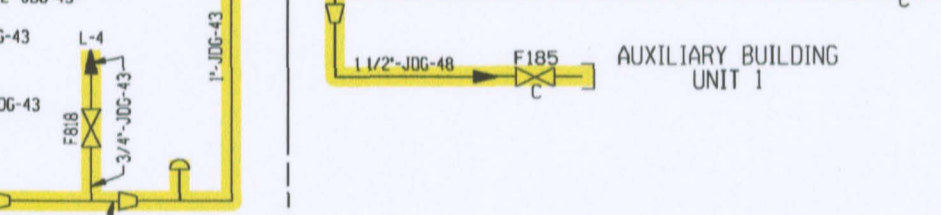
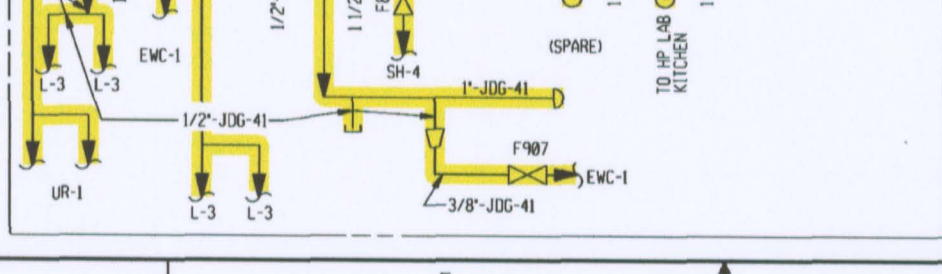
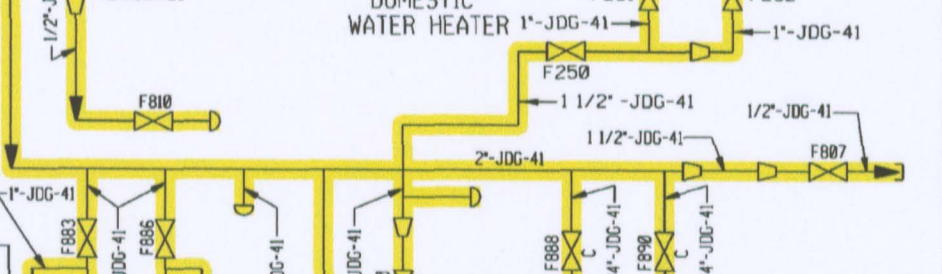
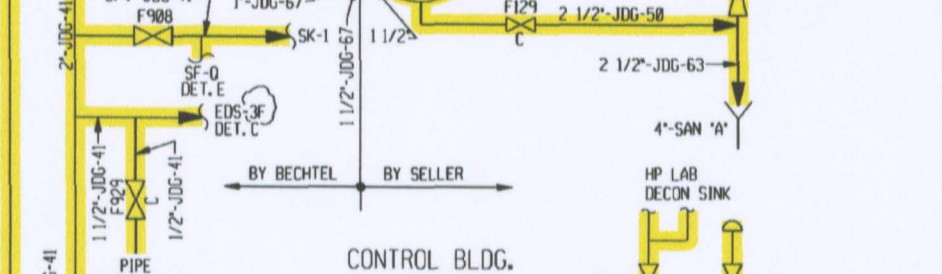
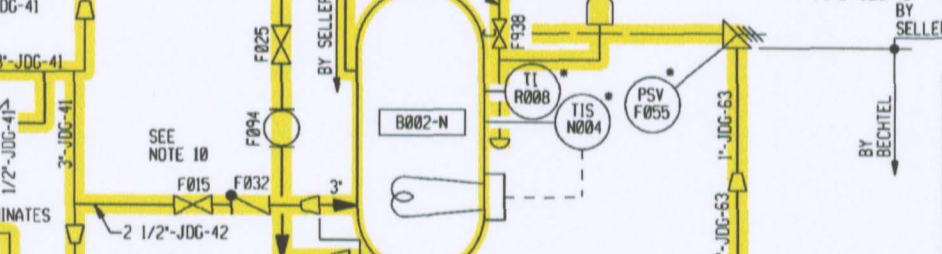
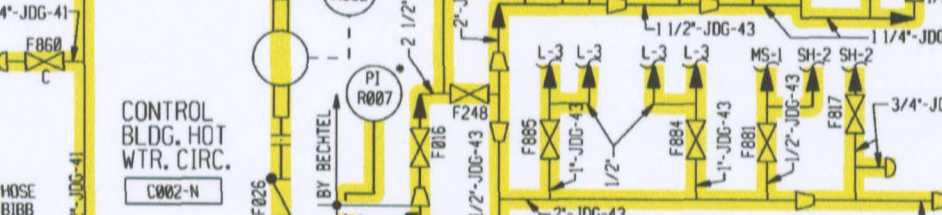
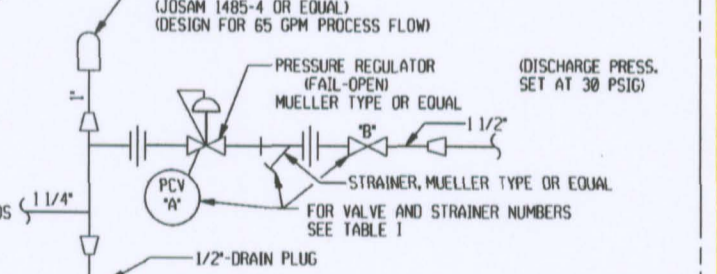
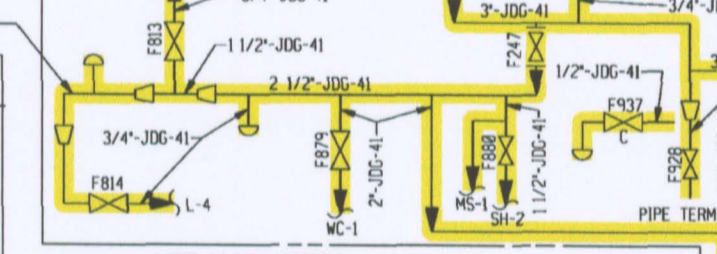
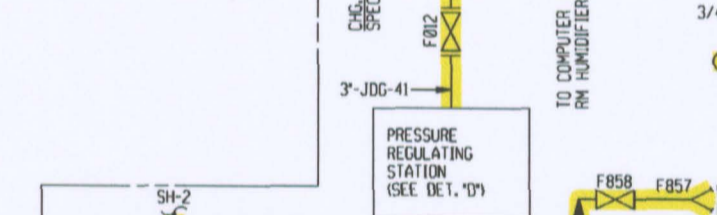
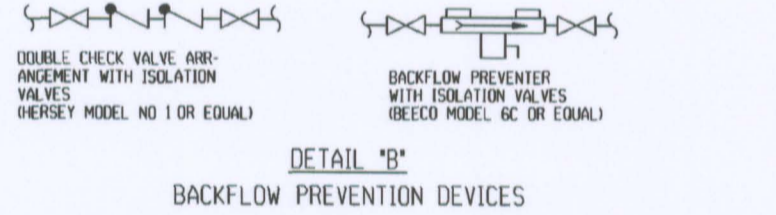
NO.	DATE	DESCRIPTION	BY	ENG	CHK	APP
<b>REVISIONS</b>						
<b>LRA-M-0034B</b>						
CAD FILE: m0034b.dgn						
PLOT FILE:						

**TABLE I**

EDS	VALVE NO.	STRAINER NUMBER	EDS	VALVE NO.	STRAINER NUMBER	EDS	VALVE NO.	STRAINER NUMBER			
18	F516	F105	0811	2A	F539	F188	0804	3A	F565	F214	0868
				2B	F540	F189	0805	3B	F566	F215	0861
				2C	F541	F190	0806	3C	F567	F216	0862
				2D	F542	F191	0807	3D	F568	F217	0863
				2E	F543	F192	0808	3E	F569	F218	0864
				2F	F544	F193	0809	3F	F570	F219	0865
				2G	F545	F194	0810	3G	F571	F220	0866
				2H	F546	F195	0811	3H	F572	F221	0867
				2I	F547	F196	0812	3I	F573	F222	0868
				2J	F548	F197	0813	3J	F574	F223	0869
				2K	F549	F198	0814	3K	F575	F224	0870
				2L	F550	F199	0815	3L	F576	F225	0871
				2M	F551	F200	0816	3M	F577	F226	0872
				2N	F552	F201	0817	3N	F578	F227	0873
				2O	F553	F202	0818	3O	F579	F228	0874
				2P	F554	F203	0819	3P	F580	F229	0875
				2Q	F555	F204	0820	3Q	F581	F230	0876
				2R	F556	F205	0821	3R	F582	F231	0877
				2S	F557	F206	0822	3S	F583	F232	0878
				2T	F558	F207	0823	3T	F584	F233	0879
				2U	F559	F208	0824	3U	F585	F234	0880
				2V	F560	F209	0825	3V	F586	F235	0881

**TABLE II**

S.F.	VALVE NO.	S.F.	VALVE NO.
A	F826	P	F244
B	F827	O	F245
C	F828	R	F246
D	F829	S	F247
E	F830	T	F248
F	F831		
G	F832		
H	F833		
I	F834		
J	F835		
K	F836		
L	F837		
M	F838		
N	F839		
O	F840		
	F841		
	F842		
	F843		
	F844		



D10