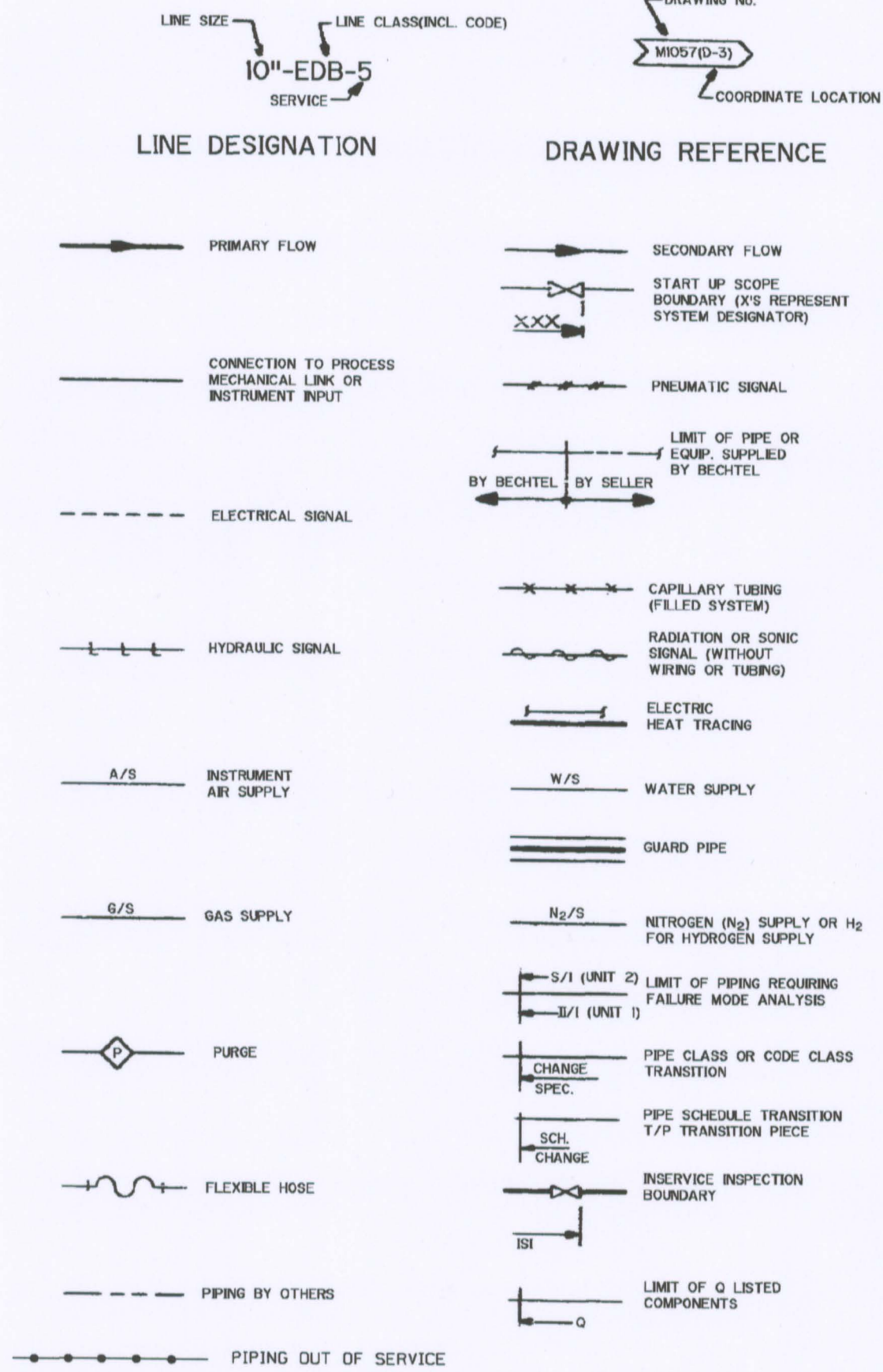
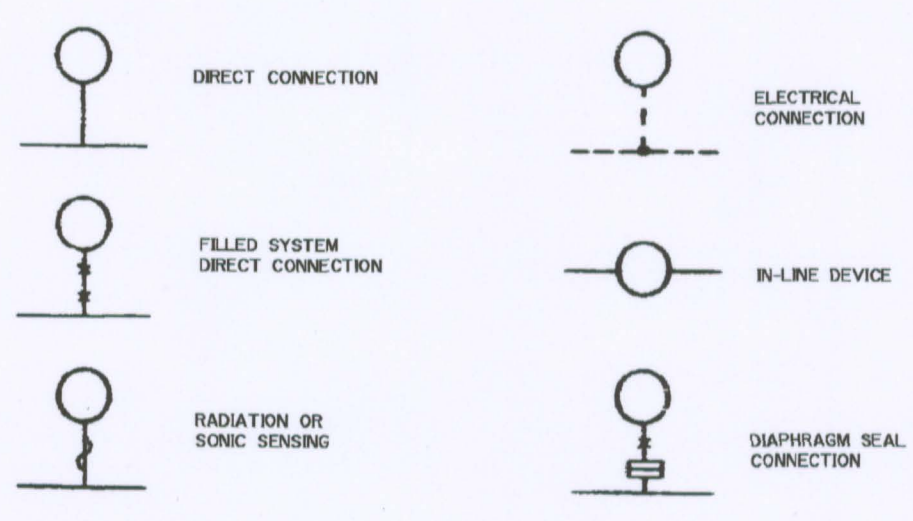


LINES

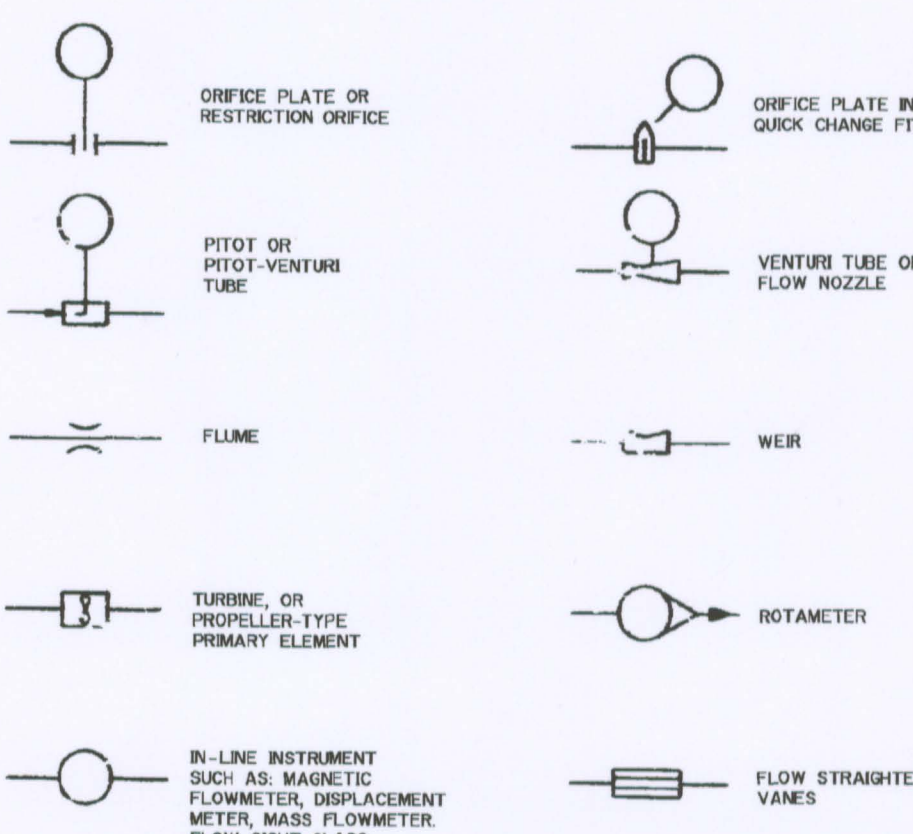


VARIABLES

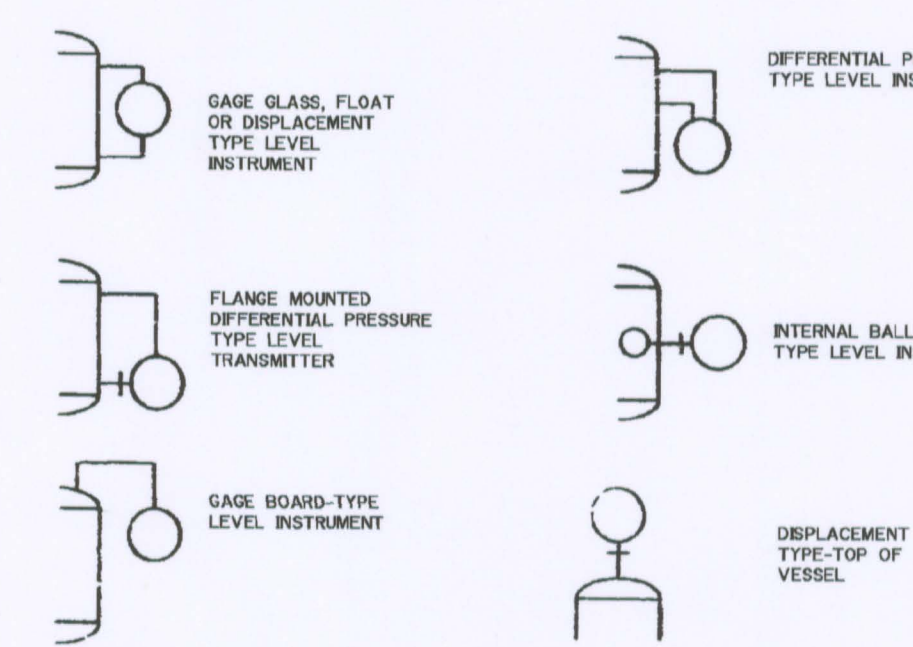
TYPICAL CONNECTION-ANY VARIABLE



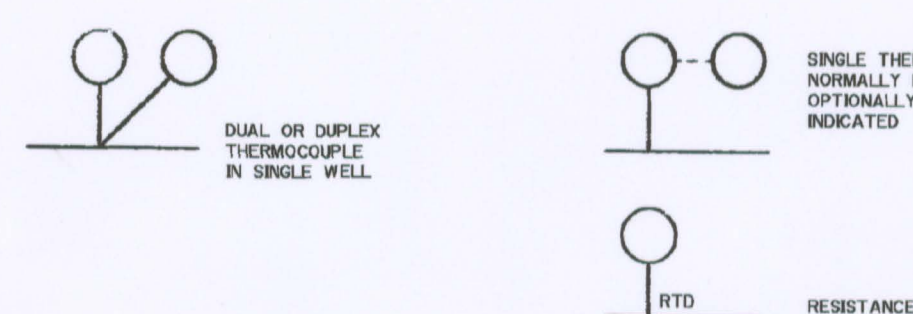
FLOW



LEVEL

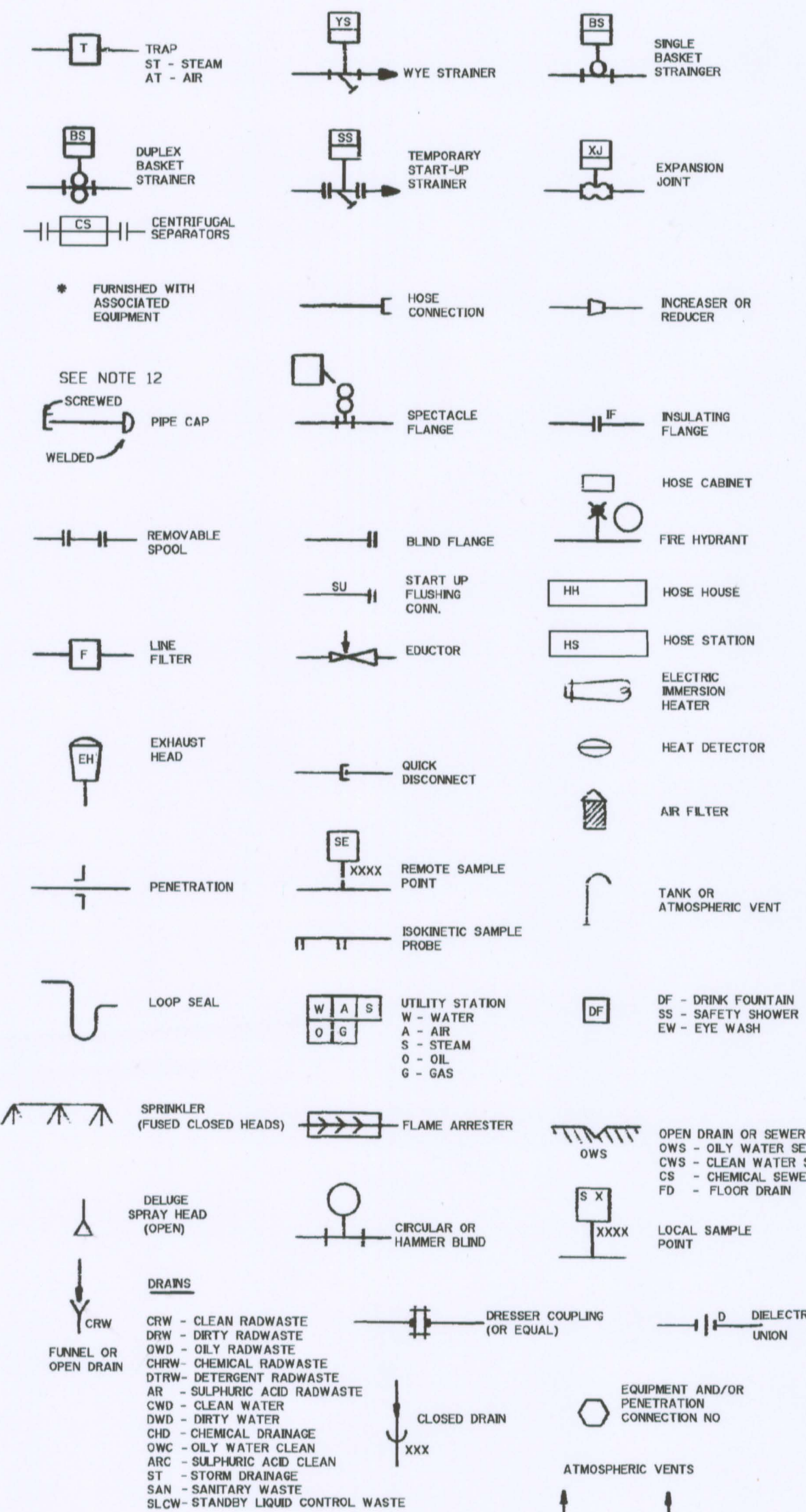


TEMPERATURE



- NOTES: 1. VALVE SIZE AND/OR VALVE MATERIAL CLASSIFICATION WILL APPEAR ONLY IF SIZE DIFFERS FROM LINE SIZE... 2. FOR PIPING AND MATERIALS SPEC. SHEET SEE STD. NO. GNS-MS-03... 3. FOR VALVE IDENTIFICATION SEE SPEC. NO. 9645-M3-01... 4. FOR EQUIPMENT NUMBER SEE EQUIPMENT LIST DOCUMENT NO. 9645-AS1-5015... 5. FOR INSTRUMENT LIST SEE INSTRUMENT INDEX... 6. ALL INSTRUMENT VALVES INCLUDING ROOT VALVES WILL BE SHOWN ON INSTRUMENT INSTALLATION DRAWINGS... 7. SERIES M-00 NUMBER INDICATES A SYSTEM COMMON TO BOTH UNITS... 8. FOR HVAC SYMBOL LEGEND SEE DRAWING M-0047A... 9. PIPING THAT IS UPGRADED FROM ANSI B31.1 TO ASME SECTION III BECAUSE IT PENETRATES A "Q" LISTED WALL AND THEN CHANGES BACK TO ANSI B31.1 DOES NOT REQUIRE ASME CODE STAMPING...

SPECIALTIES & MISCELLANEOUS SYMBOLS



PIPING & INSTRUMENT DIAGRAMS

Table listing piping and instrument diagrams with columns for drawing number, description, and sheet count. Includes entries like M-0030ABB P & ID LEGEND (2 SHEETS), M-0031 CHLORINATION SYSTEM, M-0032AB MAKEUP WATER TREATMENT SYSTEM (2 SHEETS), etc.

PRIORITY DRAWING

Table with columns for drawing number, description, and revision status. Includes entries like 026 AS-BUILT PER EC-15899, 027 AS-BUILT PER EC-5920, 026 AS-BUILT PER DRN 07-269.

GRAND GULF NUCLEAR STATION UNIT 1 NUCLEAR PLANT ENGINEERING UPDATED FINAL SAFETY ANALYSIS REPORT FIGURE NUMBER - 1.8-001 P & I DIAGRAM LEGEND UNITS 1 & 2