



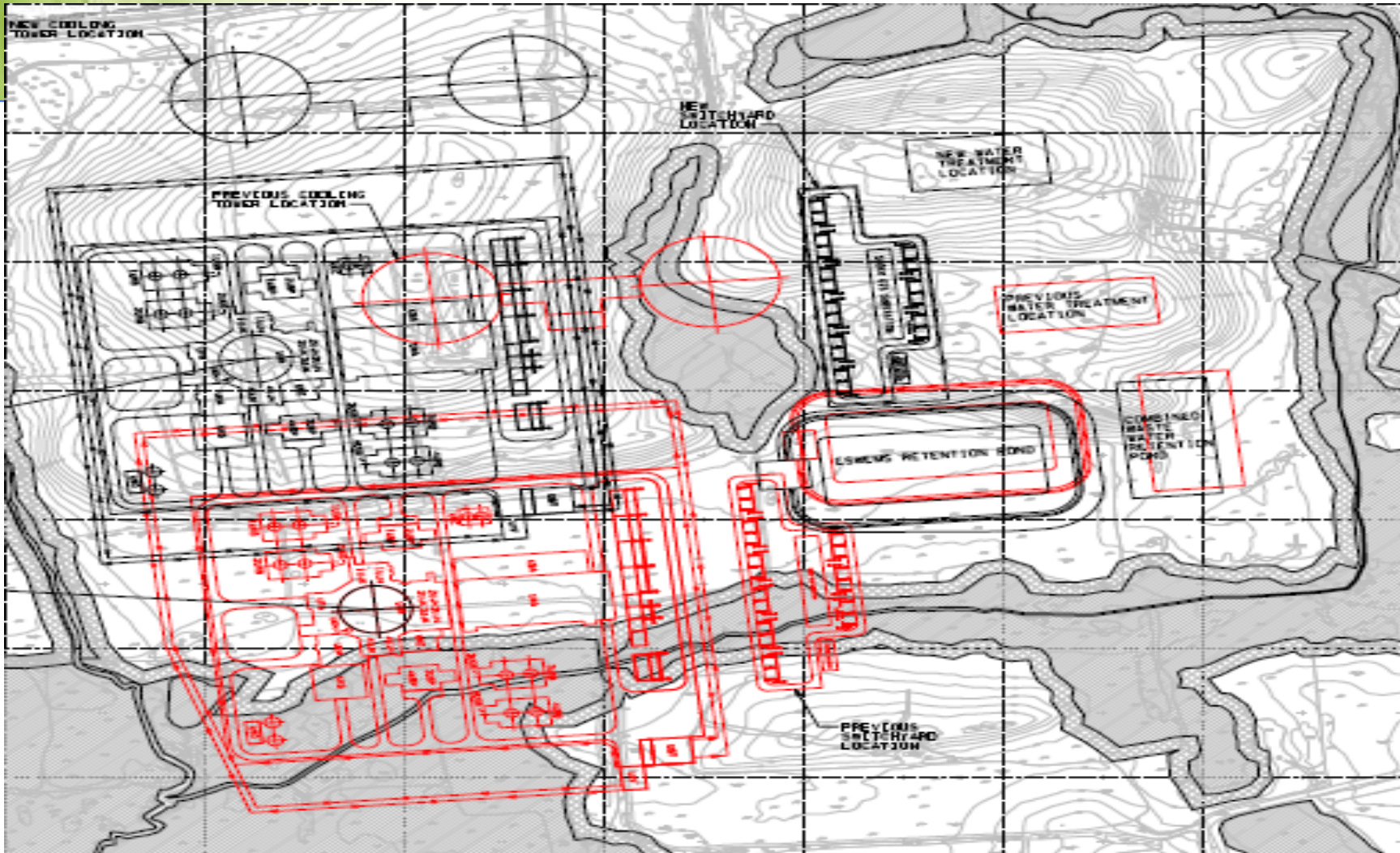
Overview of Updated BBNPP Environmental Report

January 11, 2012

Outline

- Plot Plan Change (PPC) Overview
- Environmental Report Update Process
- Overview of ER Changes

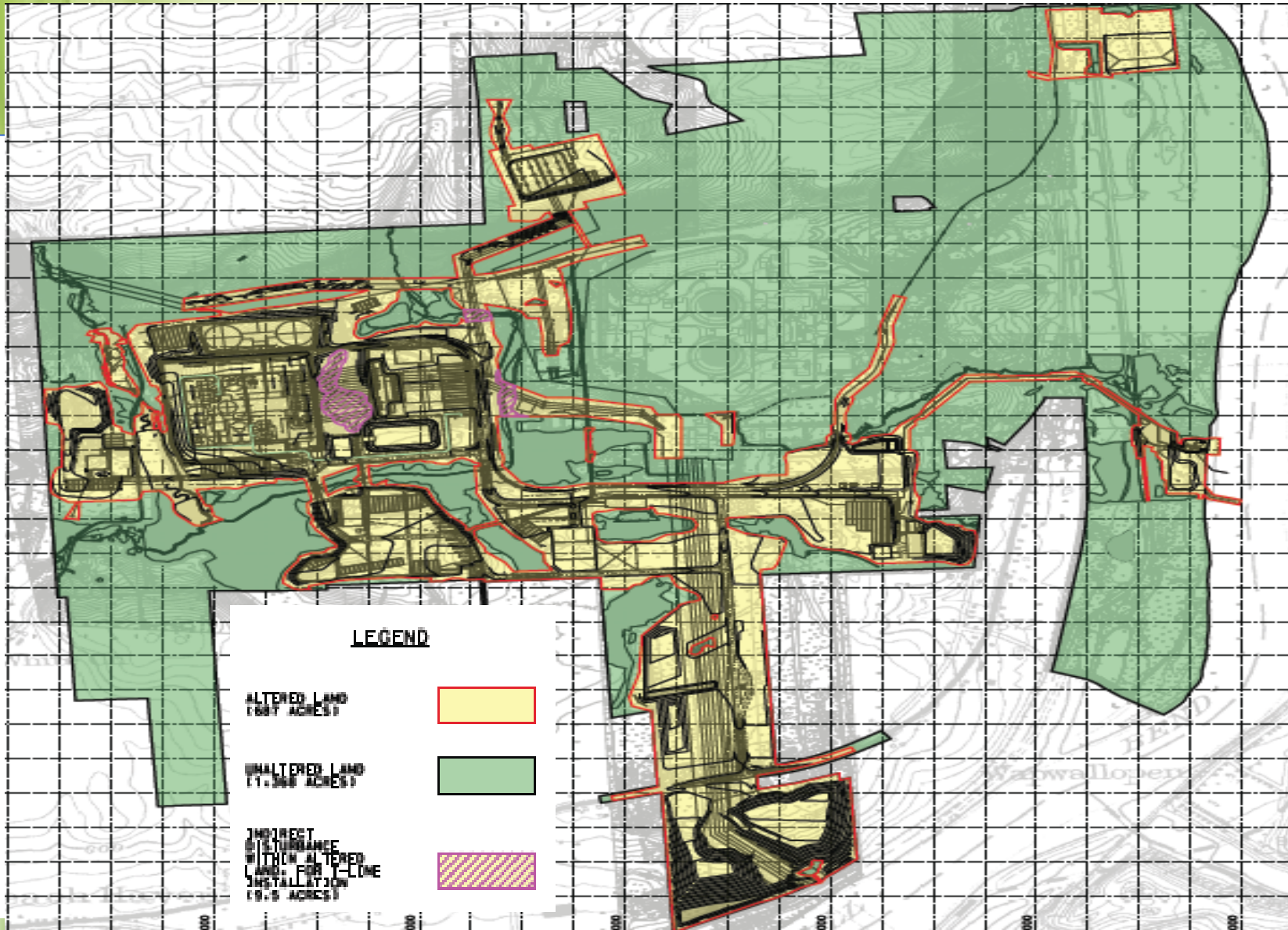
PLOT PLAN CHANGE DELTA VIEW



RED: ORIGINAL PLANT LOCATION

BLACK: NEW PLANT LOCATION

REVISED LIMIT OF DISTURBANCE



“Plot Plan Change” - PPC

- Decision made to avoid wetlands impacts by relocating the Power Block footprint
- Power Block Move
 - 972 feet North,
 - 300 feet West
 - ESWEMS Pumphouse/Pond Moved South/West Slightly,
 - BBNPP GIS Switchyard Moved North and East
- Elevation Changes
 - Power Block: 674' >> 720'
 - ESWEMS Pumphouse: 674' >> 700'
 - Natural Draft Cooling Towers: 694' >> 700'

“Plot Plan Change” - PPC

- Site Changes:
 - Power Plant Structure Changes resulted in significant avoidance of ‘southern wetlands’ and ‘teardrop wetland’
 - 7 Bridges Added on Site to Avoid/Minimize Wetlands and Stream Impacts
 - Existing Susquehanna 500 kV Switchyard #1
 - Modification made to avoid wetlands on West Side of Switchyard
 - Revised Design of “Northeast Laydown Area” to Avoid Wetlands, and Cultural Resources Impacts
 - Wetlands “Buffer” factored into Site Design in Most Areas

“Plot Plan Change” - PPC

- Site Changes:
 - Balanced Excavation Cut/Fill – Offsite Environmental Impacts of Excess Cut Completely Avoided
 - Footprint of new 500 kV Switchyard #2 was optimized to Reduce Impact to Forested Areas (Indiana Bat)
 - Improved site grading/drainage design features
 - Eliminated Stormwater Storage Ponds
 - Implemented “BMP’s”, e.g., infiltration beds
 - Utilized Available Land West of N. Market Street for Non-Plant Facilities
 - Moved Existing 230 kV Transmission Line to North of Beach Grove Road to Accommodate the Power Block Move

PPC – Key Environmental Results

- < 2 Acres Wetlands Permanently Impacted
- Significant Reduction to Stream Impacts
- Offsite Environmental Impacts of Excess Cut Completely Avoided
- No Adverse Environmental Impacts Resulted from Environmental Study Updates

Environmental Report Update Process

- Each section was reviewed for PPC impacts
- Impacted sections were updated to reflect the new location, other pending changes, alignment with the JPA, and cleanup of minor items identified during the update.
- Previous RAIs associated with impacted sections were reviewed, and the ER was updated to be responsive to those RAIs in the context of the new location.
- Updated ER reflecting new location submitted 12/19/11
 - Fully Aligned with Joint Permit Application and NPDES
 - All open ER RAIs have been responded to, and reflect PPC

Overview of ER Changes

- PPC
 - Numerous elevation, acreage and distance related text, table and figure updates
 - ACC
 - EAB shape change
 - MET
 - Data Updates, Air Conformity Analysis
 - ALT
 - BBNPP only for PPC
 - AE
 - Additional Groundwater Monitoring Wells/Data
 - Northern Cricket Frog

Overview of ER Changes

- PPC
 - CR
 - New Studies to Address Additional Land Disturbance
 - GEN/STO
 - Minor
 - GEO
 - Additional Borings to Address Safety Requirements
 - Essentially Same Geology as Original Site

Overview of ER Changes

- PPC (cont'd)
 - HYD
 - Flood Studies Revised
 - Revised Drainage and Grading Design for Site
 - LU
 - Updated to Reflect Additional Land Use
 - NRHH
 - Study Updates: Cooling Tower Plume, Noise
 - RHH
 - Updated to Reflect Revised Distances
 - SE
 - None

Overview of ER Changes

- PPC (cont'd)
 - TE
 - Updated Roost Tree Study
 - TR
 - None

Overview of Changes

- Other
 - ASER Rev 2
 - Updated Evaluation and Sensitivity Studies
 - Addition of Martins Creek NJ
 - Updated Permit Matrix
 - Updated Traffic Impact Study (TIS) based on PennDOT Feedback
 - Incorporation of various RAI responses