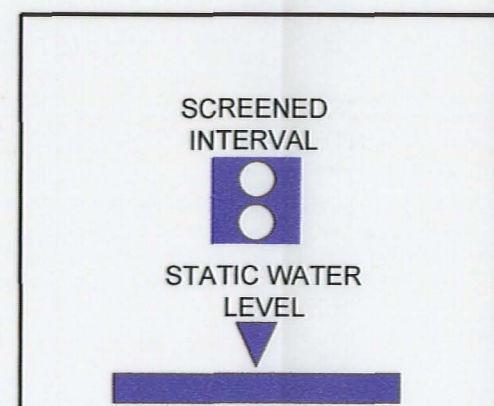
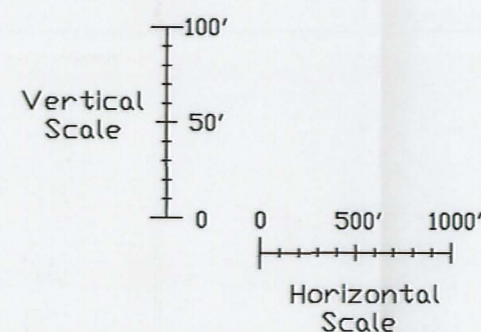
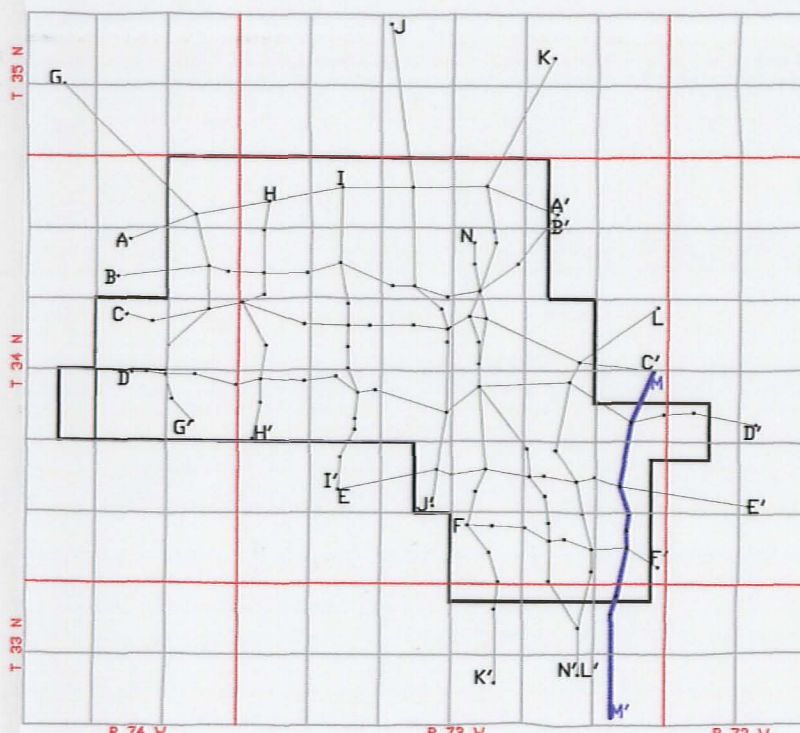
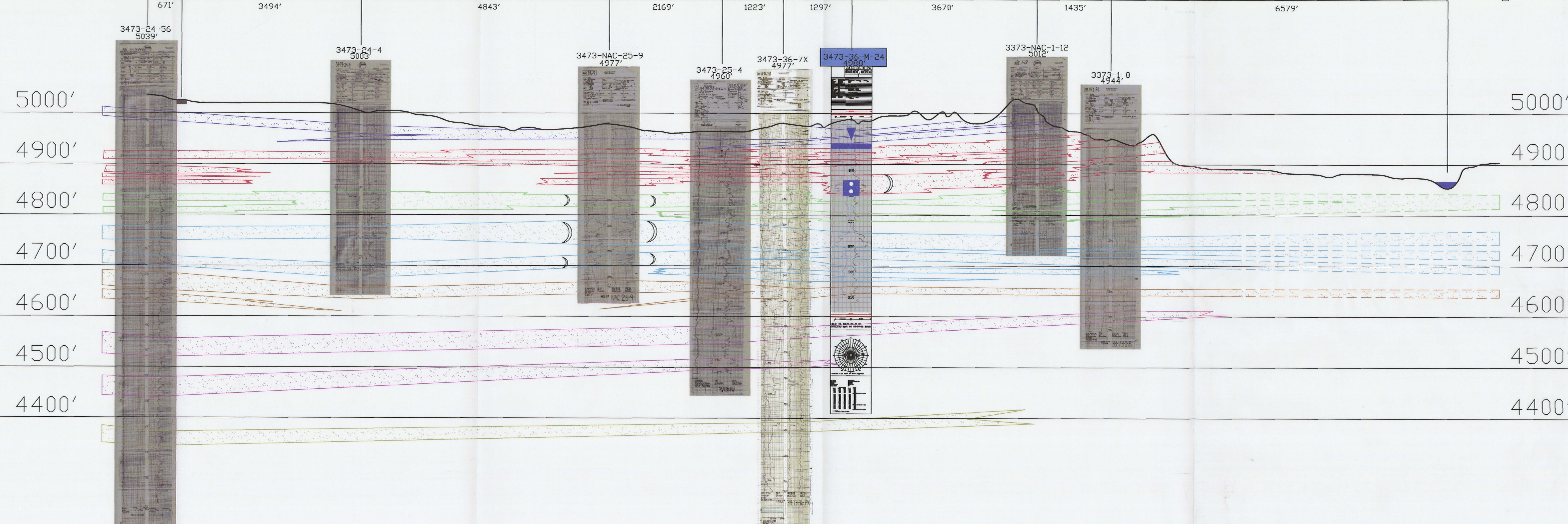


M

M'

N

S



LEGEND

- 100 SAND
- 90 SAND
- 80 SAND
- 70 SAND
- 60 SAND
- 50 SAND

ROLL FRONT  
NTS

)  
NOT TO SCALE

LOOKING EAST



907 North Poplar St., Suite 260, Casper, WY 82601 307-234-8235

LUDEMAN PROJECT  
CROSS SECTION M-M'

T.34N., R.73W., Sec. 24,25,36  
T.33N., R.73W., Sec. 1,12  
CONVERSE COUNTY, WYOMING

Date: 02/09/2009 By: TC Checked:

Rev. No.	Description	Date	By
1		07/28/2009	TC

FIGURE:  
2-16