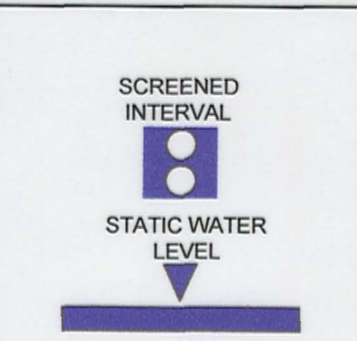
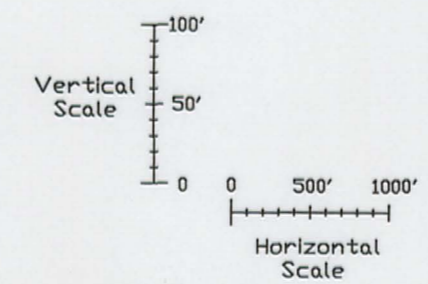
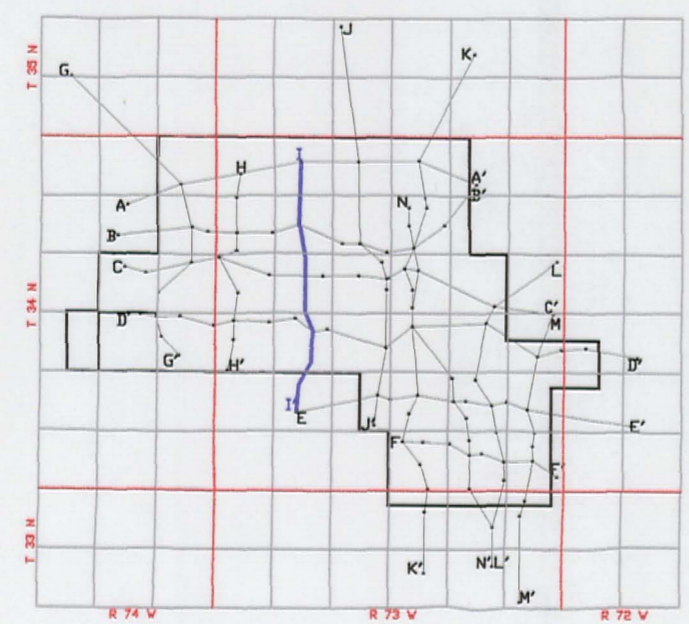
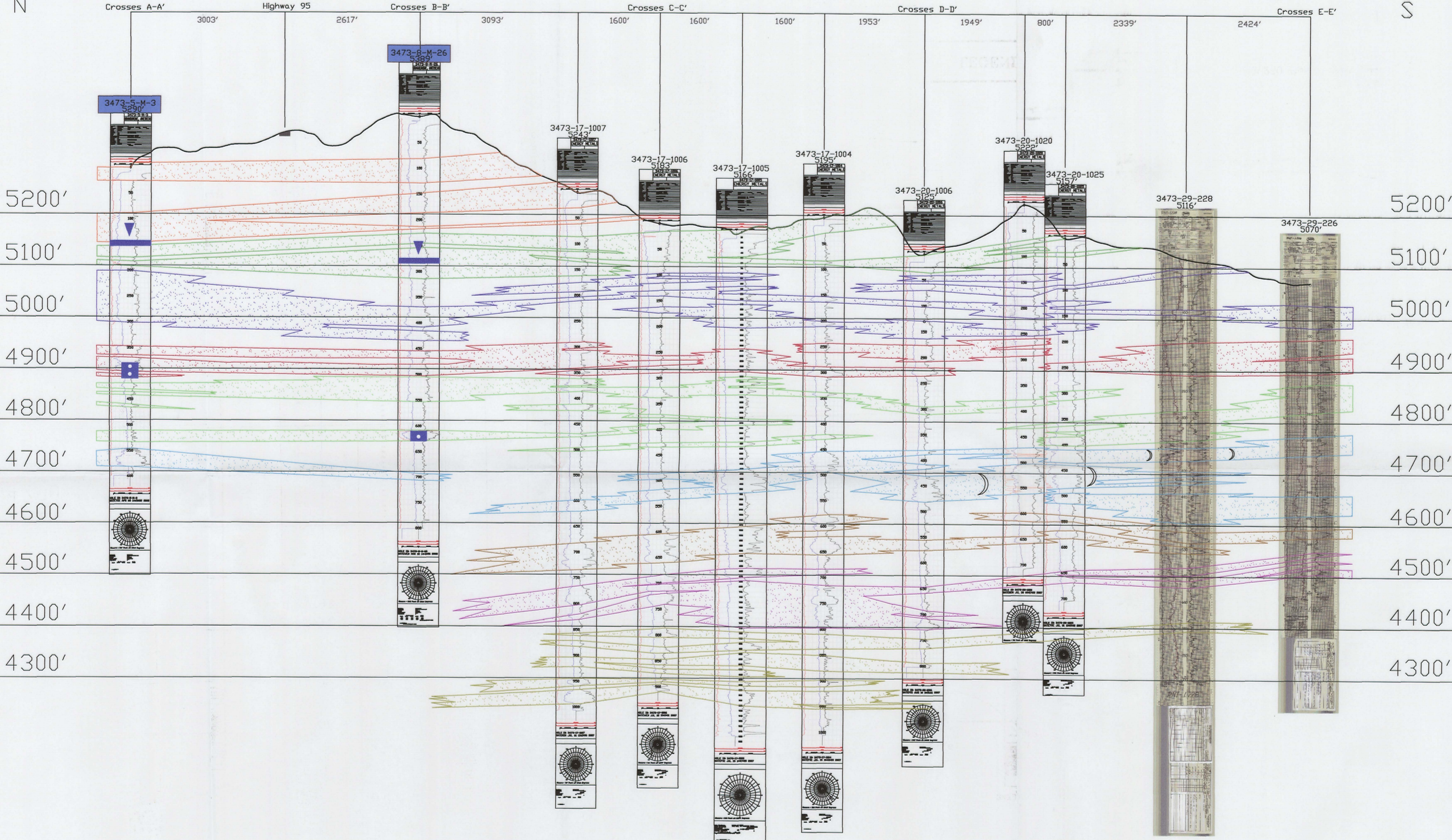


I N 3473-5 3473-8 3473-8 3473-17 3473-17 3473-20 3473-20 3473-29 I' S



LEGEND	
120 SAND	
110 SAND	
100 SAND	
90 SAND	
80 SAND	
70 SAND	
60 SAND	
50 SAND	
ROLL FRONT	
NTS	NOT TO SCALE
LOOKING EAST	

investing in our energy

907 North Poplar St., Suite 260, Casper, WY 82601 307-234-8235

**LUDEMAN PROJECT**

**CROSS SECTION I-I'**

T.34N., R.73W., Sec. 5, 8, 17, 20, 29

CONVERSE COUNTY, WYOMING

Date: 02/09/2009	By: TC	Checked:
Rev. No. 1	Description	Date 07/28/2009
		By TC

FIGURE: 2-15

D-04