

F

F'

W

E

3473-34 | 3473-35

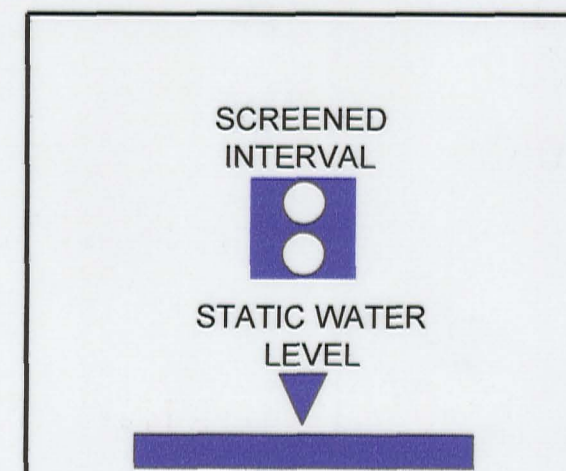
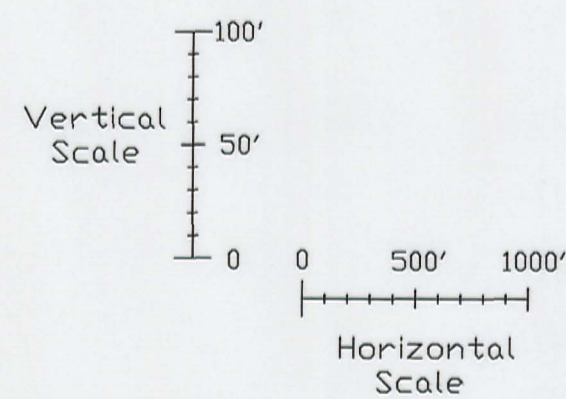
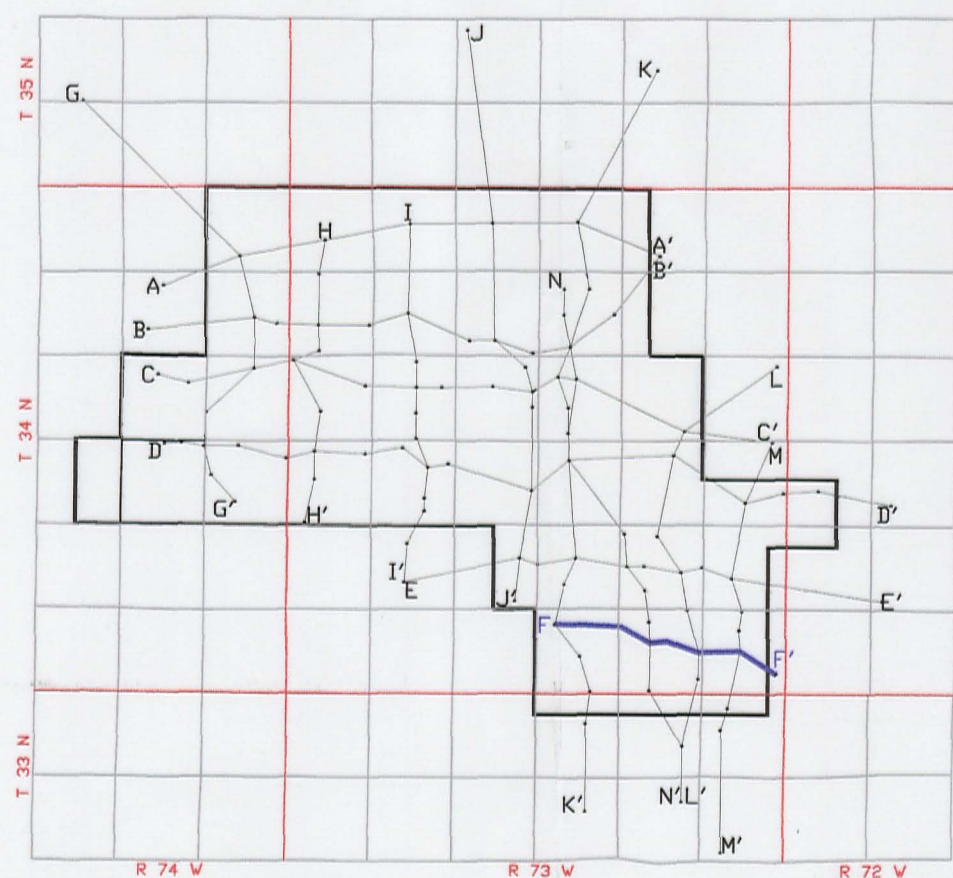
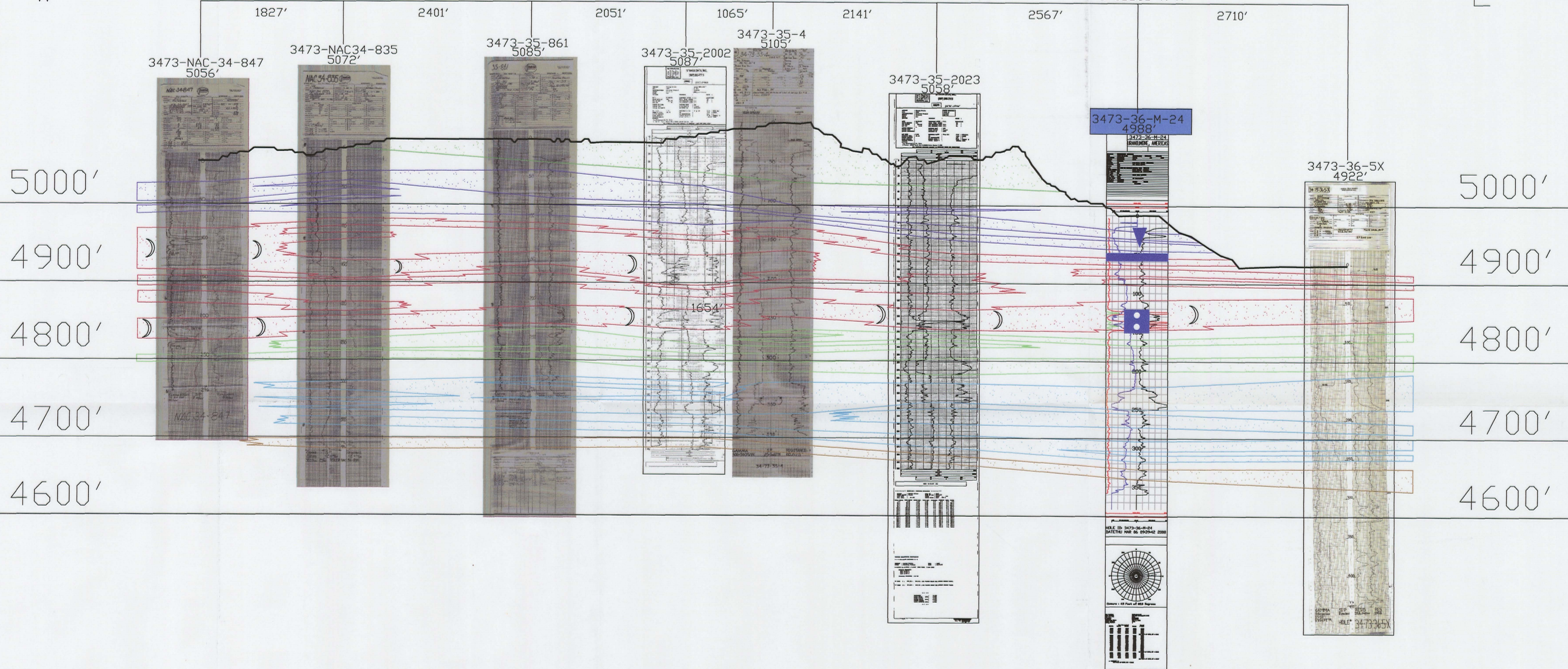
3473-35 | 3473-36

Crosses K-K'

Crosses N-N'

Crosses L-L'

Crosses M-M'



LEGEND

- 110 SAND
- 100 SAND
- 90 SAND
- 80 SAND
- 70 SAND
- 60 SAND

ROLL FRONT

NTS NOT TO SCALE

LOOKING NORTH



907 North Poplar St., Suite 260, Casper, WY 82601 307-234-8235

LUDEMAN PROJECT

CROSS SECTION F-F'

T.34N., R.73W., Sec. 34,35,36
CONVERSE COUNTY, WYOMING

Date:	02/09/2009	By:	TC	Checked:	
Rev. No.	1	Description	Date	By	FIGURE: 2-14
			07/28/2009	TC	