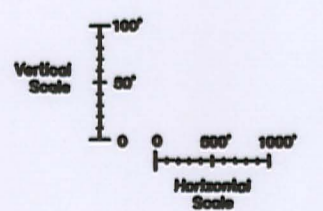
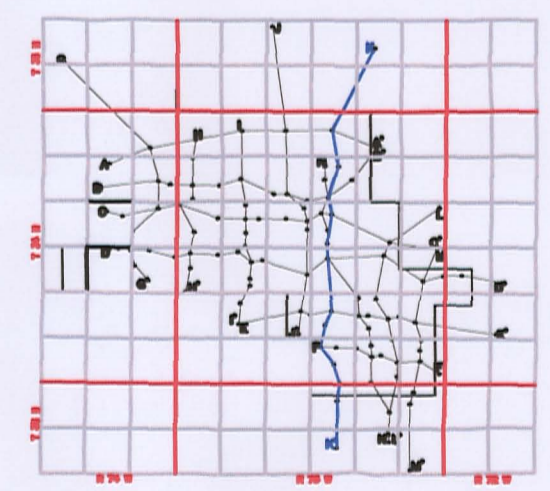
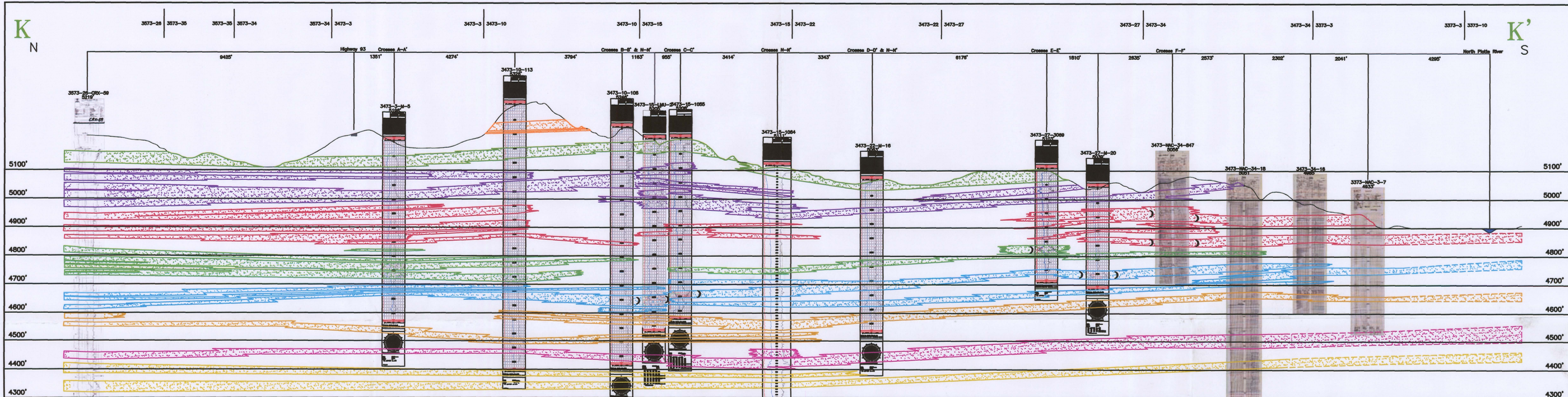


K
N

K'
S



LEGEND	
120 SAND	
110 SAND	
100 SAND	
90 SAND	
80 SAND	
70 SAND	
60 SAND	
50 SAND	
ROLL FRONT	
NTS	

NOT TO SCALE
LOOKING EAST

uraniumone™
investing in our energy
907 North Poplar St., Suite 260, Casper, WY 82601 307-234-8235

**LUDEMAN PROJECT
CROSS SECTION K-K'**
T.35N., R.73W., Sec. 26,35,34
T.34N., R.73W., Sec. 3,10,15,22,27,34
T.33N., R.73W., Sec. 3,10
CONVERSE COUNTY, WYOMING

Date:	02/09/2009	By:	TC	Checked:	
Rev. No.	Description	Date	By	TC	FIGURE:
1		07/28/2009	TC		3.3-13

D11