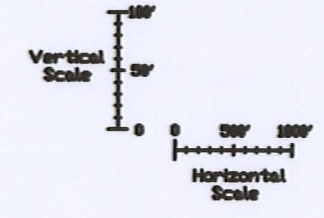
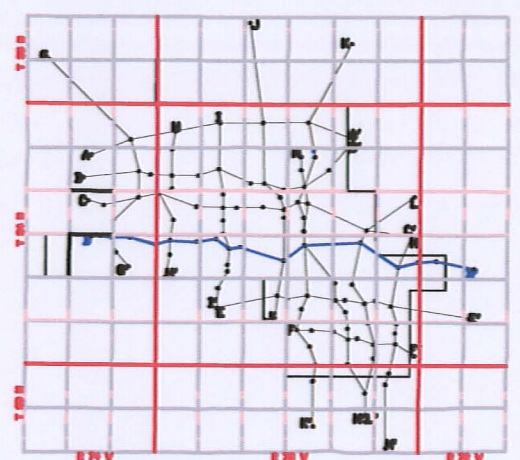
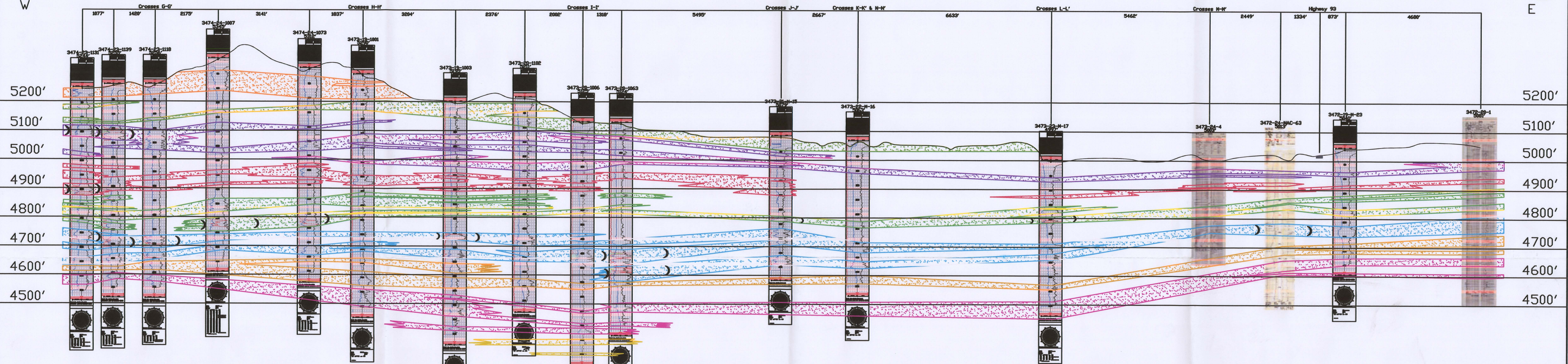


D
W

D'
E



LEGEND

- 120 SAND
- 110 SAND
- 100 SAND
- 90 SAND
- 80 SAND
- 70 SAND
- 60 SAND
- 50 SAND
- 40 SAND
- ROLL FRONT
- NTS

NOT TO SCALE
LOOKING NORTH



907 North Poplar St., Suite 260, Casper, WY 82601 307-234-8235

**LUDEMAN PROJECT
CROSS SECTION D-D'**

T.34N., R.74W., Sec. 23,24
T.34N., R.73W., Sec. 19,20,21,22,23,24
T.34N., R.72W., Sec. 19,20
CONVERSE COUNTY, WYOMING

Date:	02/09/2009	By:	TC	Checked:	
Rev. No.	Description	Date	By	FIGURE:	
1		07/28/2009	TC	3.3-6	

D04