

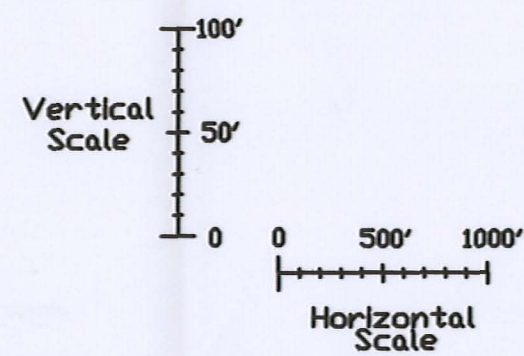
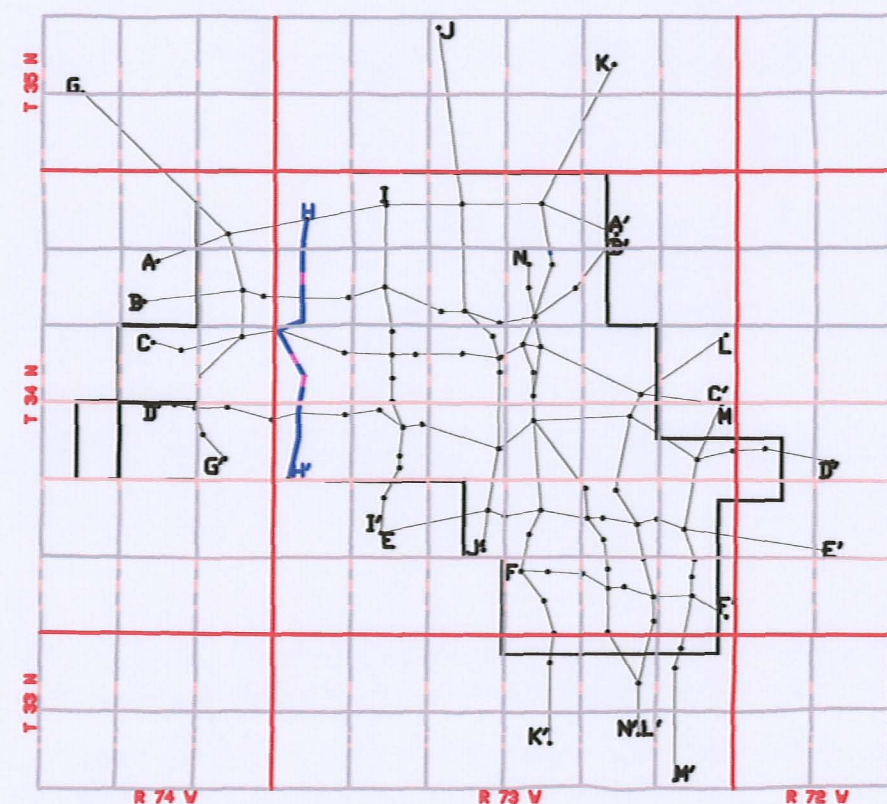
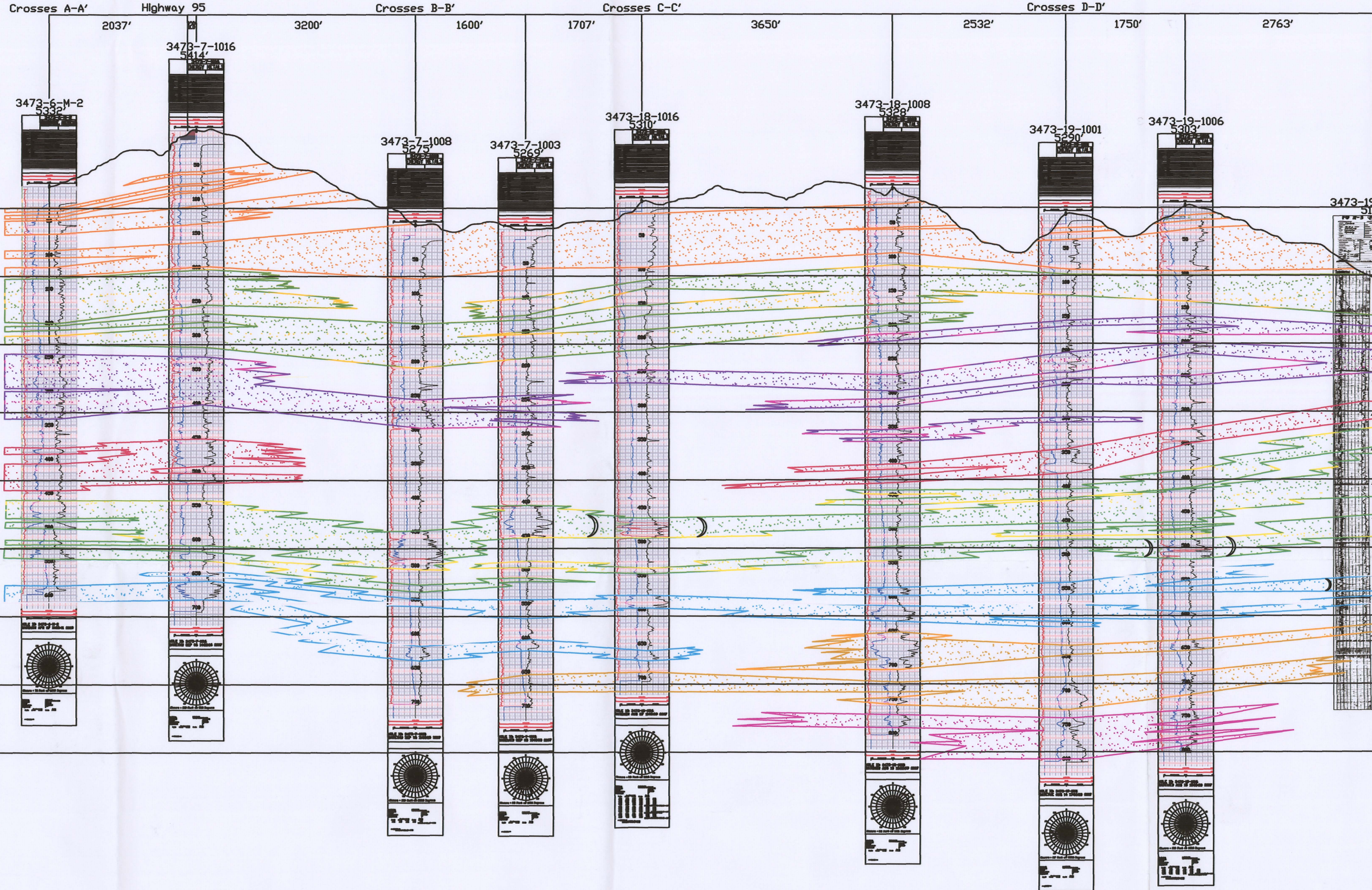
H
N

H'
S

3473-6 3473-7

3473-7 3473-18

3473-18 3473-19



LEGEND

- 120 SAND
- 110 SAND
- 100 SAND
- 90 SAND
- 80 SAND
- 70 SAND
- 60 SAND
- 50 SAND

ROLL FRONT)
 NTS NOT TO SCALE
 LOOKING EAST



907 North Poplar St., Suite 260, Casper, WY 82601 307-234-8235

**LUDEMAN PROJECT
 CROSS SECTION H-H'**

T.34N., R.73W., Sec. 6,7,18,19
 CONVERSE COUNTY, WYOMING

Date: 02/09/2009 By: TC Checked:

Rev. No.	Description	Date	By
1		07/28/2009	TC

FIGURE:
 3.3-10

D08