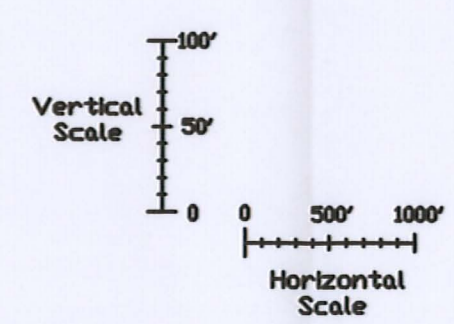
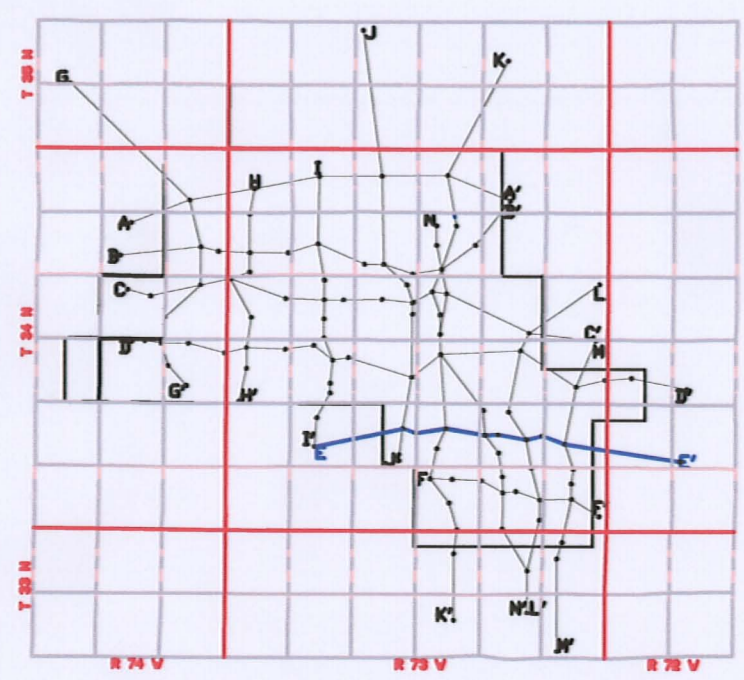
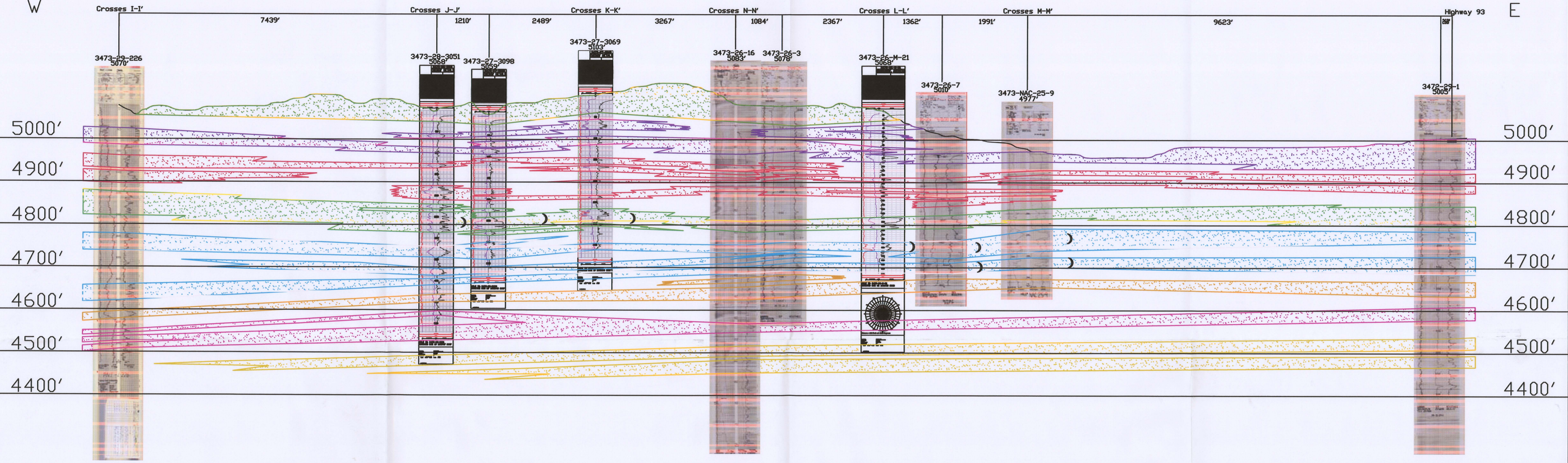


E

E'

W

E



LEGEND

- 110 SAND
- 100 SAND
- 90 SAND
- 80 SAND
- 70 SAND
- 60 SAND
- 50 SAND
- 40 SAND
- ROLL FRONT

NTS
NOT TO SCALE
LOOKING NORTH



907 North Poplar St., Suite 260, Casper, WY 82601 307-234-8235

LUDEMAN PROJECT CROSS SECTION E-E'

T.34N., R.73W., Sec. 29,28,27,26,25
T.34N., R.72W., Sec. 30,29
CONVERSE COUNTY, WYOMING

Date:	02/09/2009	By:	TC	Checked:	
Rev. No.	Description	Date	By	FIGURE:	
1		07/28/2009	TC	3.3-7	

DOS