

F

F'

W

E

3473-34 3473-35

3473-35 3473-36

Crosses K-K'

Crosses N-N'

Crosses L-L'

Crosses M-M'

5000'

5000'

4900'

4900'

4800'

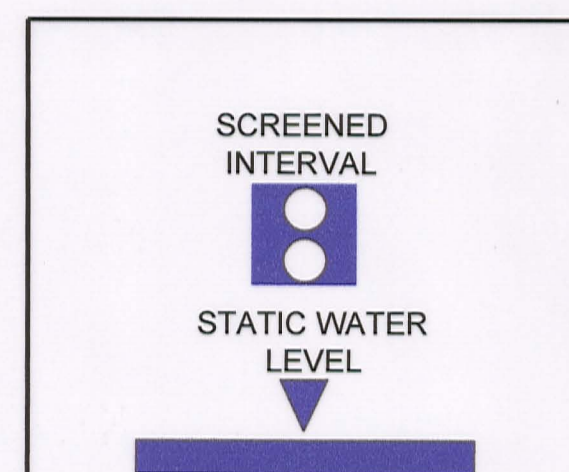
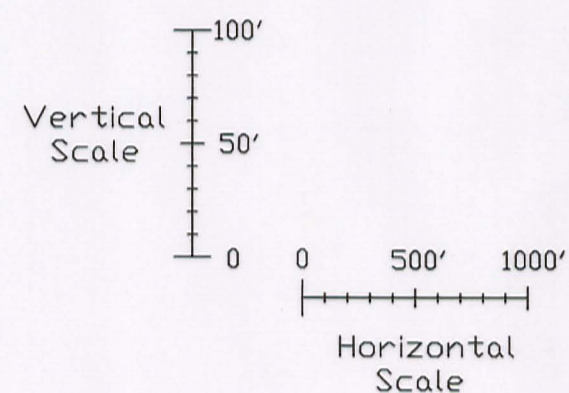
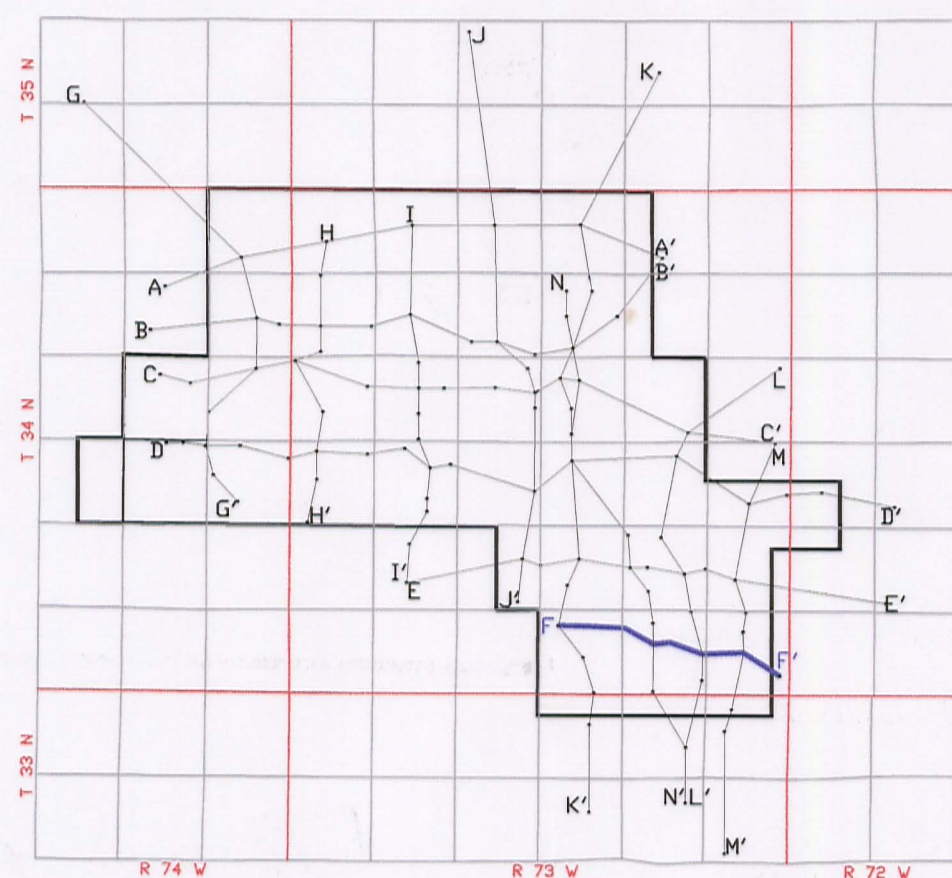
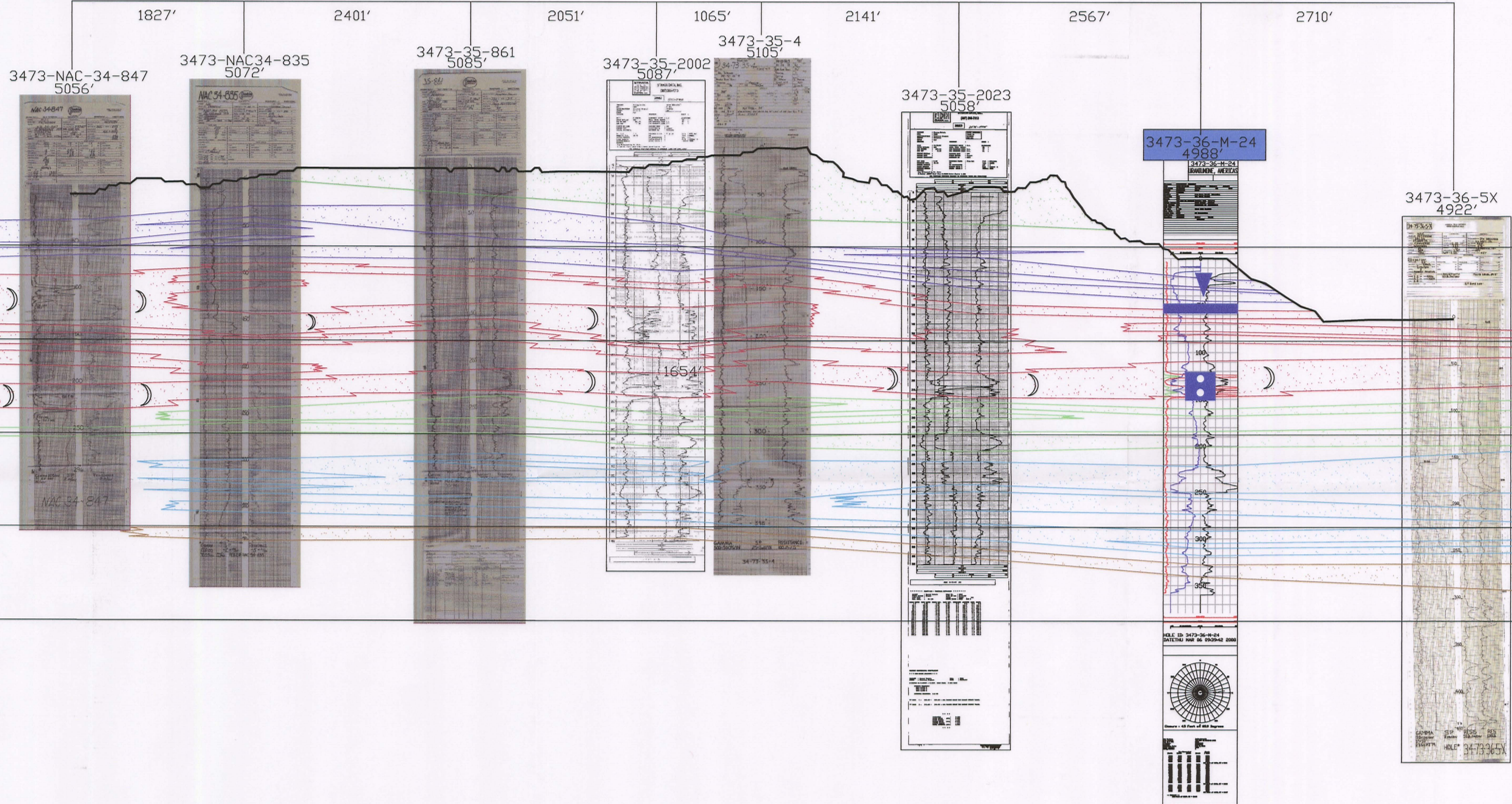
4800'

4700'

4700'

4600'

4600'



LEGEND

- 110 SAND
- 100 SAND
- 90 SAND
- 80 SAND
- 70 SAND
- 60 SAND

ROLL FRONT

NTS

NOT TO SCALE

LOOKING NORTH



907 North Poplar St., Suite 260, Casper, WY 82601 307-234-8235

LUDEMAN PROJECT

CROSS SECTION F-F'

T.34N., R.73W., Sec. 34,35,36
CONVERSE COUNTY, WYOMING

Date: 02/09/2009 By: TC Checked:

Rev. No.	Description	Date	By
1		07/28/2009	TC

FIGURE:
2-14

D03